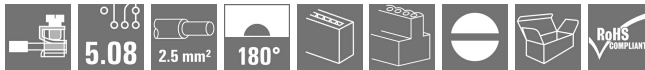
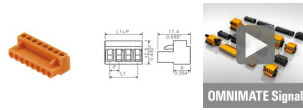


Quick access

- Device connectivity - OMNIMATE
- PCB connectors - OMNIMATE Signal
- Pitch 5.08 mm (0.200 inch) - Series E
- Female plugs - leaf spring screw con
- BL 5.08
- BL 5.08

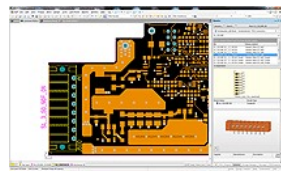
Online Catalogue » Device connectivity - OMNIMATE » PCB connectors - OMNIMATE Signal » Pitch 5.08 mm (0.200 inch) - Series BL/SL 5.08 » Female plugs - leaf spring screw connection » BL 5.08 » BL 5.08

## BL 5.08/10/180 SN OR BX



OMNIMATE® sample service

[More information](#)



OMNIMATE component libraries

Complete component libraries for your PCB design software

[More information](#)



[More information](#)

General ordering data	
Delivery status	<b>This article will no longer be available in the future.</b>
Available until	2023-12-31
Alternative product	1943660000
Type	BL 5.08/10/180 SN OR BX
Order No.	1716400000
Version	PCB plug-in connector, female plug, 5.08 mm, Number of poles: 10, 180°, Pressure clamp connection, Clamping range, max. : 2.08 mm², Box
GTIN (EAN)	4008190376444
Qty.	50 pc(s).
Product data	IEC: 400 V / 14 A / 0.2 - 1.5 mm² UL: 300 V / 10 A / AWG 26 - AWG 14
Packaging	Box
Availability	Delivery date on request
Dimensions and weights	<a href="#">▶</a>
System Parameters	<a href="#">▶</a>
Material data	<a href="#">▶</a>
Conductors suitable for connection	<a href="#">▶</a>
Rated data acc. to IEC	<a href="#">▶</a>
Rated data acc. to CSA	<a href="#">▶</a>
Rated data acc. to UL 1059	<a href="#">▶</a>
Packing	<a href="#">▶</a>
Downloads	<a href="#">▶</a>
Classifications	<a href="#">▶</a>
Notes	<a href="#">▶</a>
Approvals	<a href="#">▶</a>
Accessories	<a href="#">▶</a>
Related products	<a href="#">▶</a>

- Add to inquiry list
- PDF data sheet
- Product configurator
- Accessories
- Related products
- Print view
- Help

Follow us on:



Print page Error message

Electronics  
Electronics housing - OMNIMATE  
housing

Active industrial Ethernet  
Passive Industrial Ethernet

Contactless transmission

E-mail: [webmaster@weidmueller.de](mailto:webmaster@weidmueller.de)  
+49 5231 14-0  
+49 5231 14-292083