

Quick access

Device connectivity - OMNIMATE ▾

PCB connectors - OMNIMATE Signa ▾

Pitch 5.08 mm (0.200 inch) - Series f ▾

Female plugs - leaf spring screw con ▾

BL 5.08 ▾

BL 5.08 ▾

Online Catalogue » Device connectivity - OMNIMATE » PCB connectors - OMNIMATE Signal » Pitch 5.08 mm (0.200 inch) - Series BL/SL 5.08 » Female plugs - leaf spring screw connection » BL 5.08 » BL 5.08

BL 5.08/06/180 SN OR BX

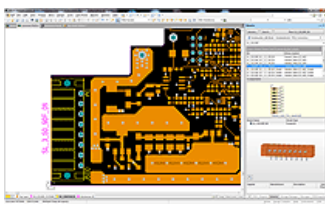


More information



OMNIMATE® sample service

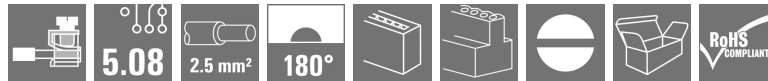
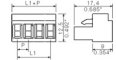
More information



OMNIMATE component libraries

Complete component libraries for your PCB design software

More information



General ordering data	
Delivery status	This article will no longer be available in the future.
Available until	2023-12-31
Alternative product	1943620000
Type	BL 5.08/06/180 SN OR BX
Order No.	1716360000
Version	PCB plug-in connector, female plug, 5.08 mm, No. of poles: 6, 180°, Pressure clamp connection, Clamping range, max. : 2.08 mm², Box
GTIN (EAN)	4008190376390
Qty.	50 pc(s).
Product data	IEC: 400 V / 14 A / 0.2 - 1.5 mm² UL: 300 V / 10 A / AWG 26 - AWG 14
Packaging	Box
Availability	Delivery date on request
Dimensions and weights	
system parameters	
Material data	
Conductors suitable for connection	

- Add to inquiry list
- PDF data sheet
- Product configurator
- CAD model
- Accessories
- Related products
- Print view
- Help

Rated data acc. to IEC
Rated data acc. to CSA
Rated data acc. to UL 1059
Packing
Downloads
Classifications
Notes
Approvals
Accessories
Related products

Follow us on:



Print page Error message

Copyright Weidmüller Interface GmbH & Co. KG | [Legal information](#) | [Privacy](#)

Products

Klippon® Connect terminal blocks
 Device connectivity - OMNIMATE
 Heavy-duty connectors
 Electronics
 Electronics housing - OMNIMATE housing

Products

Identification systems
 Sensor-Actuator Interface (SAI)
 Tools
 Active industrial Ethernet
 Passive Industrial Ethernet

Products

Enclosure systems
 Application-specific solutions
 Remote I/O - u-remote
 Contactless transmission

Support & Service

CAE data
 OMNIMATE® sample service

Contact

Weidmüller Interface GmbH & Co. KG
 Klingenbergstraße 16
 D-32758 Detmold

E-mail: webmaster@weidmueller.de
 +49 5231 14-0
 +49 5231 14-292083