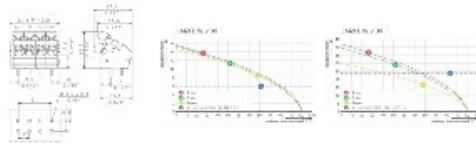


Quick access

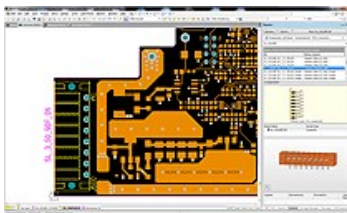
- Device connectivity - OMNIMATE
- PCB terminals - OMNIMATE Signal
- Tension clamp spring connection
- 2.5 mm² (AWG 14) - Pitch 5.00-5.08 r
- LMZFL 5/135

LMZFL 5/2/135 3.5SW



OMNIMATE® sample service

More information



OMNIMATE component libraries

Complete component libraries for your PCB design software

More information

General ordering data	
Delivery status	This article will no longer be available in the future.
Available until	2019-12-31
Type	LMZFL 5/2/135 3.5SW
Order No.	1811510000
Version	PCB terminal, 5.08 mm, No. of poles: 2, 135°, Solder pin length (l): 3.5 mm, tinned, Black, Tension clamp connection, Clamping range, rated connection, max.: 2.5 mm ² , Box
GTIN (EAN)	4032248290611
Qty.	100 pc(s).
Product data	IEC: 630 V / 24 A / 0.13 - 2.5 mm ² UL: 300 V / 15 A / AWG 26 - AWG 14
Packaging	Box
Dimensions and weights	
System parameters	
Material data	
Conductors suitable for connection	
Rated data acc. to IEC	
Rated data acc. to CSA	
Rated data acc. to UL 1059	
Downloads	
Classifications	

- Add to inquiry list
- PDF data sheet
- Product configurator
- CAD model
- EDA library
- Related products
- Print view
- Help

- Notes ▶
- Approvals ▶
- Related products ▶

Follow us on:



Print page Error message

Copyright Weidmüller Interface GmbH & Co. KG | [Legal information](#) | [Privacy](#)

Products

Klippon® Connect terminal blocks
Device connectivity - OMNIMATE
Heavy-duty connectors
Electronics
Electronics housing - OMNIMATE housing

Products

Identification systems
Sensor-Actuator Interface (SAI)
Tools
Active industrial Ethernet
Passive Industrial Ethernet

Products

Enclosure systems
Application-specific solutions
Remote I/O - u-remote
Contactless transmission

Support & Service

Download-Feeds
CAE data
OMNIMATE® sample service

Contact

Weidmüller Interface GmbH & Co. KG
Klingenbergstraße 16
D-32758 Detmold

E-mail: info@weidmueller.de
Fon: +49 5231 14-0
Fax: +49 5231 14-2083