

Quick access

Device connectivity - OMNIMATE ▾

PCB connectors - OMNIMATE Signa ▾

Pitch 5.08 mm (0.200 inch) - Series E ▾

Female plugs - clamping yoke screw ▾

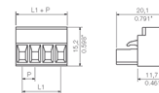
BLZ 5.08/180 ▾

BLZ 5.08/180 ▾

Please select ... ▾

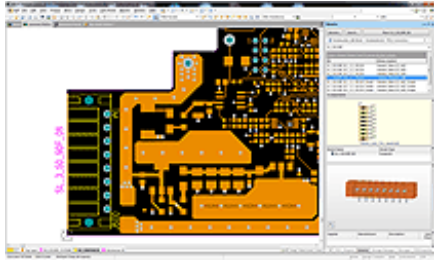
Online Catalogue » Device connectivity - OMNIMATE » PCB connectors - OMNIMATE Signal » Pitch 5.08 mm (0.200 inch) - Series BL/SL 5.08 » Female plugs - clamping yoke screw connection » BLZ 5.08/180 » BLZ 5.08/180

BLZ 5.08/02/180 SN BK BX *Do not use product for new developments*



OMNIMATE® sample service

[More information](#)



OMNIMATE component libraries

Complete component libraries for your PCB design software

[More information](#)



General ordering data

Delivery status **This article will no longer be available in the future.**

Available until 2017-12-31

Alternative product **1943810000**

Type BLZ 5.08/02/180 SN BK BX

Order No. 1526410000

Version PCB plug-in connector, female plug, 5.08 mm, No. of poles: 2, 180°, Clamping yoke connection, Clamping range, rated connection, max.: 3.31 mm², Box

GTIN (EAN) 4008190025038

Qty. 100 pc(s).

Product data IEC: 400 V / 19 A / 0.2 - 2.5 mm²
UL: 300 V / 15 A / AWG 26 - AWG 12

Packaging Box

Dimensions and weights

System parameters

Material data

Conductors suitable for connection

Rated data acc. to IEC

Rated data acc. to CSA

Rated data acc. to UL 1059

Classifications

- Add to inquiry list
- PDF data sheet
- Product configurator
- CAD model
- is an accessory of
- Accessories
- Related products
- Print view
- Help

| |
|------------------|
| Notes |
| Approvals |
| Related products |

Follow us on:



Print page Error message

Copyright Weidmüller Interface GmbH & Co. KG | [Legal information](#) | [Privacy](#)

| | | | | |
|--|---------------------------------|--------------------------------|------------------------------|--|
| Products | Products | Products | Support & Service | Contact |
| Modular terminals | Identification systems | Enclosure systems | Download-Feeds | Weidmüller Interface GmbH & Co. KG |
| Device connectivity - OMNIMATE | Sensor-Actuator Interface (SAI) | Application-specific solutions | CAE data | Klingenbergstraße 16 |
| Heavy-duty connectors | Tools | Remote I/O - u-remote | OMNIMATE® sample service | D-32758 Detmold |
| Electronics | Active industrial Ethernet | Contactless transmission | | E-mail: info@weidmueller.de |
| Electronics housing - OMNIMATE housing | Passive Industrial Ethernet | | | Fon: +49 5231 14-0 |
| | | | | Fax: +49 5231 14-2083 |