

[Home](#) / [Panel Mount Indicators](#) / [Incandescent Panel Mount Indicator White .500" Hi-Hat 28V Tab Terminals](#)

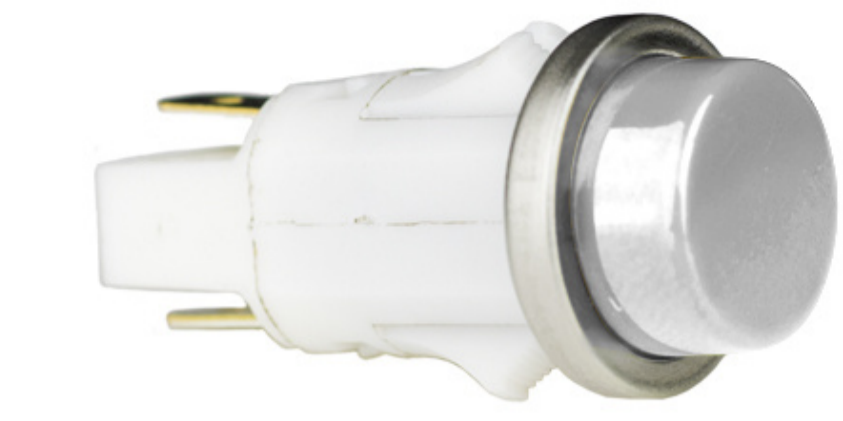
## Incandescent Panel Mount Indicator White .500" Hi-Hat 28V Tab Terminals

SKU: 1090QC4-28V

Categories: [Panel Mount Indicators](#), [Incandescent Panel Mount Indicator](#), [1090 Series](#)

### Product Description

1090 Series Incandescent Panel Mount Indicator with wire available in different lenses and lens colors and operating voltage range of 12V or 28V Snap fit into 0.500" (12.7mm) panel hole diameter.



Description	Stock Availability	Technical Downloads
<h3>Additional Information</h3>		
PMI Shape	Round	
Terminals	Tab Terminals – Quick connect	
Mounting Hole Dimension	Dia. 0.500"	
PMI Mounting	Front Panel Mounting	
PMI Type	Snap In	
PMI Color	White	
PMI Lens Color	White	
Lens Shape	Hi Hat Lens	
Lamp Type	Incandescent	
Lamp Life	7,000 hours	
Voltage	28 Volts	
Operation Supply Voltage	28V	
Rated Current	40mA	
Tab Terminal Size	0.187"	
PMI Housing Finish	White Nylon	
Bezel Finish	Polished Stainless Steel	
Material Lens	Polycarbonate	
PMI Panel Thickness	0.020" to 0.100"	
MSL Rating	–	
Mounting Hardware	With Speed Nut	
Mounting Hardware Included	No	
RoHS	Yes	
REACH Compliant	Yes	
Conflict Mineral Free	Yes	
Harmonization Code	8531.90.75.00	
ECCN	EAR99	
Country of Origin	MX (Mexico)	
Product Status	Not Recommended for New Design (NRND)	