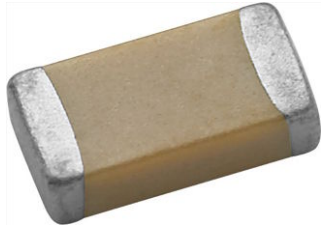


Surface Mount Multilayer Ceramic Chip Capacitors MIL Qualified, Type CDR



FEATURES

- Military qualified products
- Federal stock control number, CAGE CODE 2770A
- High reliability tested per MIL-PRF-55681
- Tin / lead termination codes “W”, “Z”, and “U”
- Lead (Pb)-free termination codes “Y” and “M”
- Wet build process
- Reliable Noble Metal Electrode (NME) system
- Material categorization: for definitions of compliance please see www.vishay.com/doc?99912



Note

* This datasheet provides information about parts that are RoHS-compliant and / or parts that are non RoHS-compliant. For example, parts with lead (Pb) terminations are not RoHS-compliant. Please see the information / tables in this datasheet for details

APPLICATIONS

- Avionic systems
- Sonar systems
- Satellite systems
- Missiles applications
- Geographical information systems
- Global positioning systems

ELECTRICAL SPECIFICATIONS

Note

- Electrical characteristics at +25 °C unless otherwise specified

Operating Temperature: -55 °C to +125 °C

Capacitance Range: 1.0 pF to 470 nF

Voltage Range: 6.3 V_{DC} to 100 V_{DC}

Temperature Coefficient of Capacitance (TCC):

BP: 0 ppm/°C ± 30 ppm/°C from -55 °C to +125 °C, with 0 V_{DC} applied
 0 ppm/°C ± 30 ppm/°C from -55 °C to +125 °C, with 100 % rated V_{DC} applied

BX: ± 15 % from -55 °C to +125 °C, with 0 V_{DC} applied

BX: +15 %, -25 % from -55 °C to +125 °C, with 100 % rated V_{DC} applied

BR: ± 15 % from -55 °C to +125 °C, with 0 V_{DC} applied
 +15 %, -40 % -55 °C to +125 °C, with 100 % rated V_{DC} applied

Dissipation Factor (DF):

BP: 0.15 % maximum

BX: 2.50 % maximum

BR: ≤ 25 V: 3.5 % maximum

> 25 V: 2.5 % maximum

Test frequency:

1 MHz ± 50 kHz for BP capacitors ≤ 1000 pF

and for BX capacitors ≤ 100 pF

All other BP, BX, and BR at 1 kHz ± 50 Hz

Aging Rate:

BP: 0 % maximum per decade

BX, BR: 1 % maximum per decade

Insulation Resistance (IR):

at +25 °C and rated voltage 100 000 MΩ minimum or 1000 ΩF, whichever is less

Dielectric Strength Test:

performed per method 103 of EIA-198-2-E.

Applied test voltages:

≤ 100 V_{DC}-rated: 250 % of rated voltage



QUICK REFERENCE DATA				
DIELECTRIC	STYLE (CASE)	MAXIMUM VOLTAGE (V)	CAPACITANCE	
			MINIMUM	MAXIMUM
BP	CDR01 (0805)	100	10 pF	180 pF
BX	CDR01 (0805)	100	120 pF	4.7 nF
BP	CDR02 (1805)	100	220 pF	270 pF
BX	CDR02 (1805)	100	3.9 nF	22 nF
BP	CDR03 (1808)	100	330 pF	1.0 nF
BX	CDR03 (1808)	100	12 nF	68 nF
BP	CDR04 (1812)	100	1.2 nF	3.3 nF
BX	CDR04 (1812)	100	39 nF	180 nF
BX	CDR06 (2225)	50	390 nF	470 nF
BP	CDR31 (0805)	100	1.0 pF	680 pF
BX	CDR31 (0805)	100	470 pF	18 nF
BP	CDR32 (1206)	100	1.0 pF	2.2 nF
BX	CDR32 (1206)	100	4.7 nF	39 nF
BP	CDR33 (1210)	100	1.0 nF	3.3 nF
BX	CDR33 (1210)	100	15 nF	100 nF
BP	CDR34 (1812)	100	2.2 nF	10 nF
BX	CDR34 (1812)	100	27 nF	180 nF
BP	CDR35 (1825)	100	4.7 nF	22 nF
BX	CDR35 (1825)	100	56 nF	470 nF
BP	CDR36 (0603)	100	51 pF	1000 pF
BX	CDR36 (0603)	100	100 pF	56 nF
BR	CDR36 (0603)	100	100 pF	56 nF
BP	CDR37 (0402)	100	22 pF	150 pF
BX	CDR37 (0402)	50	100 pF	8.2 nF
BR	CDR37 (0402)	50	100 pF	10 nF

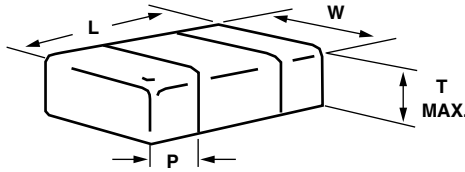
Note

- Detail ratings see selection chart

ORDERING INFORMATION - MILITARY								
CDR31	BX	102	A	K	Y	S	A	T
MILITARY STYLE	DIELECTRIC	CAPACITANCE NOMINAL CODE	DC VOLTAGE RATING (1)	CAPACITANCE TOLERANCE (2)	TERMINATION	FAILURE RATE	MARKING	PACKAGING
CDR01 CDR02 CDR03 CDR04 CDR06 CDR31 CDR32 CDR33 CDR34 CDR35 CDR36 CDR37	BP BR BX	Expressed in picofarads (pF). The first two digits are significant, the third is a multiplier. Examples: 102 = 1000 pF 1R8 = 1.8 pF	W = 6.3 V X = 10 V Y = 16 V Z = 25 V A = 50 V B = 100 V	C = ± 0.25 pF D = ± 0.5 pF F = ± 1 % G = ± 2 % J = ± 5 % K = ± 10 % M = ± 20 %	M = silver palladium (3) Y = Ni barrier with 100 % tin W, Z = Ni barrier with tin / lead plate min. 4 % lead U = Ni barrier solder coated (min. of 4 % lead)	M = 1.0 % P = 0.1 % R = 0.01 % S = 0.001 % Consult factory for failure rate status	A = unmarked	T = 7" reel / plastic tape J = 7" reel (low quantity) C = 7" reel / paper tape R = 11 1/4" / 13" reel / plastic tape P = 11 1/4" / 13" reel / paper tape B = bulk

Notes

- (1) DC voltage rating should not be exceeded in application. Other application factors may affect the MLCC performance. Consult for questions: mlcc@vishay.com
- (2) Available tolerances please see rating chart
- (3) M termination not available for CDR36 and CDR37 parts

DIMENSIONS in inches (millimeters)


MIL-PRF-55681	STYLE	LENGTH (L)	WIDTH (W)	MAXIMUM THICKNESS (T)	TERM. (P)	
					MINIMUM	MAXIMUM
/1	CDR01	0.080 ± 0.015 (2.03 ± 0.38)	0.050 ± 0.015 (1.27 ± 0.38)	0.055 (1.40)	0.010 (0.25)	0.030 (0.75)
	CDR02	0.180 ± 0.015 (4.57 ± 0.38)	0.050 ± 0.015 (1.27 ± 0.38)	0.055 (1.40)	0.010 (0.25)	0.030 (0.75)
	CDR03	0.180 ± 0.015 (4.57 ± 0.38)	0.080 ± 0.015 (2.03 ± 0.38)	0.080 (2.03)	0.010 (0.25)	0.030 (0.75)
	CDR04	0.180 ± 0.015 (4.57 ± 0.38)	0.125 ± 0.015 (3.20 ± 0.38)	0.080 (2.03)	0.010 (0.25)	0.030 (0.75)
/3	CDR06	0.225 ± 0.020 (5.72 ± 0.51)	0.250 ± 0.020 (6.35 ± 0.51)	0.080 (2.03)	0.010 (0.25)	0.030 (0.75)
/7	CDR31	0.078 ± 0.008 (2.00 ± 0.20)	0.049 ± 0.008 (1.25 ± 0.20)	0.051 (1.30)	0.012 (0.30)	0.028 (0.70)
/8	CDR32	0.125 ± 0.008 (3.20 ± 0.20)	0.062 ± 0.008 (1.60 ± 0.20)	0.051 (1.30)	0.012 (0.30)	0.028 (0.70)
/9	CDR33	0.125 ± 0.010 (3.20 ± 0.25)	0.098 ± 0.010 (2.50 ± 0.25)	0.049 (1.25)	0.010 (0.25)	0.030 (0.75)
/10	CDR34	0.176 ± 0.010 (4.50 ± 0.25)	0.125 ± 0.010 (3.20 ± 0.25)	0.059 (1.50)	0.010 (0.25)	0.030 (0.75)
/11	CDR35	0.176 ± 0.012 (4.50 ± 0.30)	0.250 ± 0.012 (6.40 ± 0.30)	0.059 (1.50)	0.008 (0.20)	0.032 (0.80)
/12	CDR36	0.063 ± 0.006 (1.60 ± 0.15)	0.032 ± 0.006 (0.81 ± 0.15)	0.036 (0.91)	0.008 (0.20)	0.020 (0.51)
/13	CDR37	0.040 ± 0.004 (1.02 ± 0.10)	0.020 ± 0.004 (0.51 ± 0.10)	0.024 (0.61)	0.004 (0.10)	0.016 (0.41)

SELECTION CHART

DIELECTRIC	BP	BP	BP	BP	BP
STYLE	CDR37	CDR37	CDR37	CDR37	CDR37
SLASH SHEET	/13	/13	/13	/13	/13
CASE CODE	0402	0402	0402	0402	0402
VOLTAGE (V _{DC})	10	16	25	50	100
VOLTAGE CODE	X	Y	Z	A	B
CAP. CODE	CAPACITANCE				
220	22	• (F, G, J)	• (F, G, J)	• (F, G, J)	• (F, G, J)
240	24	• (F, G, J)	• (F, G, J)	• (F, G, J)	• (F, G, J)
270	27	• (F, G, J)	• (F, G, J)	• (F, G, J)	• (F, G, J)
300	30	• (F, G, J)	• (F, G, J)	• (F, G, J)	• (F, G, J)
330	33	• (F, G, J)	• (F, G, J)	• (F, G, J)	• (F, G, J)
360	36	• (F, G, J)	• (F, G, J)	• (F, G, J)	• (F, G, J)
390	39	• (F, G, J)	• (F, G, J)	• (F, G, J)	• (F, G, J)
430	43	• (F, G, J)	• (F, G, J)	• (F, G, J)	• (F, G, J)
470	47	• (F, G, J)	• (F, G, J)	• (F, G, J)	• (F, G, J)
510	51	• (F, G, J)	• (F, G, J)	• (F, G, J)	• (F, G, J)
560	56	• (F, G, J)	• (F, G, J)	• (F, G, J)	• (F, G, J)
620	62	• (F, G, J)	• (F, G, J)	• (F, G, J)	• (F, G, J)
680	68	• (F, G, J)	• (F, G, J)	• (F, G, J)	• (F, G, J)
750	75	• (F, G, J)	• (F, G, J)	• (F, G, J)	• (F, G, J)
820	82	• (F, G, J)	• (F, G, J)	• (F, G, J)	• (F, G, J)
910	91	• (F, G, J)	• (F, G, J)	• (F, G, J)	• (F, G, J)
101	100	• (F, G, J)	• (F, G, J)	• (F, G, J)	• (F, G, J)
121	120	• (F, G, J)	• (F, G, J)	• (F, G, J)	• (F, G, J)
151	150	• (F, G, J)	• (F, G, J)	• (F, G, J)	• (F, G, J)

Notes

- RoHS-compliant except when supplied with lead (Pb)-containing terminations, codes "W", "Z", and "U"
- Not RoHS-compliant



SELECTION CHART											
DIELECTRIC		BR	BR	BR	BR	BR	BX	BX	BX	BX	BX
STYLE		CDR37	CDR37	CDR37	CDR37	CDR37	CDR37	CDR37	CDR37	CDR37	CDR37
SLASH SHEET		/13	/13	/13	/13	/13	/13	/13	/13	/13	/13
CASE CODE		0402	0402	0402	0402	0402	0402	0402	0402	0402	0402
VOLTAGE (V _{DC})		6.3	10	16	25	50	6.3	10	16	25	50
VOLTAGE CODE		W	X	Y	Z	A	W	X	Y	Z	A
CAP. CODE	CAP.										
101	100	• (J, K, M)	• (J, K, M)	• (J, K, M)	• (J, K, M)	• (J, K, M)	• (J, K, M)	• (J, K, M)	• (J, K, M)	• (J, K, M)	• (J, K, M)
121	120	• (J, K, M)	• (J, K, M)	• (J, K, M)	• (J, K, M)	• (J, K, M)	• (J, K, M)	• (J, K, M)	• (J, K, M)	• (J, K, M)	• (J, K, M)
151	150	• (J, K, M)	• (J, K, M)	• (J, K, M)	• (J, K, M)	• (J, K, M)	• (J, K, M)	• (J, K, M)	• (J, K, M)	• (J, K, M)	• (J, K, M)
181	180	• (J, K, M)	• (J, K, M)	• (J, K, M)	• (J, K, M)	• (J, K, M)	• (J, K, M)	• (J, K, M)	• (J, K, M)	• (J, K, M)	• (J, K, M)
221	220	• (J, K, M)	• (J, K, M)	• (J, K, M)	• (J, K, M)	• (J, K, M)	• (J, K, M)	• (J, K, M)	• (J, K, M)	• (J, K, M)	• (J, K, M)
271	270	• (J, K, M)	• (J, K, M)	• (J, K, M)	• (J, K, M)	• (J, K, M)	• (J, K, M)	• (J, K, M)	• (J, K, M)	• (J, K, M)	• (J, K, M)
331	330	• (J, K, M)	• (J, K, M)	• (J, K, M)	• (J, K, M)	• (J, K, M)	• (J, K, M)	• (J, K, M)	• (J, K, M)	• (J, K, M)	• (J, K, M)
391	390	• (J, K, M)	• (J, K, M)	• (J, K, M)	• (J, K, M)	• (J, K, M)	• (J, K, M)	• (J, K, M)	• (J, K, M)	• (J, K, M)	• (J, K, M)
471	470	• (J, K, M)	• (J, K, M)	• (J, K, M)	• (J, K, M)	• (J, K, M)	• (J, K, M)	• (J, K, M)	• (J, K, M)	• (J, K, M)	• (J, K, M)
561	560	• (J, K, M)	• (J, K, M)	• (J, K, M)	• (J, K, M)	• (J, K, M)	• (J, K, M)	• (J, K, M)	• (J, K, M)	• (J, K, M)	• (J, K, M)
681	680	• (J, K, M)	• (J, K, M)	• (J, K, M)	• (J, K, M)	• (J, K, M)	• (J, K, M)	• (J, K, M)	• (J, K, M)	• (J, K, M)	• (J, K, M)
821	820	• (J, K, M)	• (J, K, M)	• (J, K, M)	• (J, K, M)	• (J, K, M)	• (J, K, M)	• (J, K, M)	• (J, K, M)	• (J, K, M)	• (J, K, M)
102	1000	• (J, K, M)	• (J, K, M)	• (J, K, M)	• (J, K, M)	• (J, K, M)	• (J, K, M)	• (J, K, M)	• (J, K, M)	• (J, K, M)	• (J, K, M)
122	1200	• (J, K, M)	• (J, K, M)	• (J, K, M)	• (J, K, M)	• (J, K, M)	• (J, K, M)	• (J, K, M)	• (J, K, M)	• (J, K, M)	• (J, K, M)
152	1500	• (J, K, M)	• (J, K, M)	• (J, K, M)	• (J, K, M)	• (J, K, M)	• (J, K, M)	• (J, K, M)	• (J, K, M)	• (J, K, M)	• (J, K, M)
182	1800	• (J, K, M)	• (J, K, M)	• (J, K, M)	• (J, K, M)	• (J, K, M)	• (J, K, M)	• (J, K, M)	• (J, K, M)	• (J, K, M)	
222	2200	• (J, K, M)	• (J, K, M)	• (J, K, M)	• (J, K, M)	• (J, K, M)	• (J, K, M)	• (J, K, M)	• (J, K, M)	• (J, K, M)	
272	2700	• (J, K, M)	• (J, K, M)	• (J, K, M)	• (J, K, M)	• (J, K, M)	• (J, K, M)	• (J, K, M)	• (J, K, M)	• (J, K, M)	
332	3300	• (J, K, M)	• (J, K, M)	• (J, K, M)	• (J, K, M)	• (J, K, M)	• (J, K, M)	• (J, K, M)	• (J, K, M)	• (J, K, M)	
392	3900	• (J, K, M)	• (J, K, M)	• (J, K, M)	• (J, K, M)	• (J, K, M)	• (J, K, M)	• (J, K, M)	• (J, K, M)	• (J, K, M)	
472	4700	• (J, K, M)	• (J, K, M)	• (J, K, M)			• (J, K, M)	• (J, K, M)	• (J, K, M)		
562	5600	• (J, K, M)	• (J, K, M)	• (J, K, M)			• (J, K, M)	• (J, K, M)	• (J, K, M)		
682	6800	• (J, K, M)	• (J, K, M)	• (J, K, M)			• (J, K, M)	• (J, K, M)	• (J, K, M)		
822	8200	• (J, K, M)	• (J, K, M)	• (J, K, M)			• (J, K, M)	• (J, K, M)	• (J, K, M)		
103	10 000	• (J, K, M)	• (J, K, M)	• (J, K, M)							

Notes

- RoHS-compliant except when supplied with lead (Pb)-containing terminations, codes “W”, “Z”, and “U”
- Not RoHS-compliant



SELECTION CHART						
DIELECTRIC		BP	BP	BP	BP	BP
STYLE		CDR36	CDR36	CDR36	CDR36	CDR36
SLASH SHEET		/12	/12	/12	/12	/12
CASE CODE		0603	0603	0603	0603	0603
VOLTAGE (V _{DC})		10	16	25	50	100
VOLTAGE CODE		X	Y	Z	A	B
CAP. CODE	CAPACITANCE					
510	51	• (F, G, J)	• (F, G, J)	• (F, G, J)	• (F, G, J)	• (F, G, J)
560	56	• (F, G, J)	• (F, G, J)	• (F, G, J)	• (F, G, J)	• (F, G, J)
620	62	• (F, G, J)	• (F, G, J)	• (F, G, J)	• (F, G, J)	• (F, G, J)
680	68	• (F, G, J)	• (F, G, J)	• (F, G, J)	• (F, G, J)	• (F, G, J)
750	75	• (F, G, J)	• (F, G, J)	• (F, G, J)	• (F, G, J)	• (F, G, J)
820	82	• (F, G, J)	• (F, G, J)	• (F, G, J)	• (F, G, J)	• (F, G, J)
910	91	• (F, G, J)	• (F, G, J)	• (F, G, J)	• (F, G, J)	• (F, G, J)
101	100	• (F, G, J)	• (F, G, J)	• (F, G, J)	• (F, G, J)	• (F, G, J)
121	120	• (F, G, J)	• (F, G, J)	• (F, G, J)	• (F, G, J)	• (F, G, J)
151	150	• (F, G, J)	• (F, G, J)	• (F, G, J)	• (F, G, J)	• (F, G, J)
181	180	• (F, G, J)	• (F, G, J)	• (F, G, J)	• (F, G, J)	• (F, G, J)
221	220	• (F, G, J)	• (F, G, J)	• (F, G, J)	• (F, G, J)	• (F, G, J)
271	270	• (F, G, J)	• (F, G, J)	• (F, G, J)	• (F, G, J)	• (F, G, J)
331	330	• (F, G, J)	• (F, G, J)	• (F, G, J)	• (F, G, J)	• (F, G, J)
391	390	• (F, G, J)	• (F, G, J)	• (F, G, J)	• (F, G, J)	
471	470	• (F, G, J)	• (F, G, J)	• (F, G, J)	• (F, G, J)	
561	560	• (F, G, J)	• (F, G, J)	• (F, G, J)	• (F, G, J)	
681	680	• (F, G, J)	• (F, G, J)	• (F, G, J)	• (F, G, J)	
821	820	• (F, G, J)	• (F, G, J)	• (F, G, J)		
102	1000	• (F, G, J)	• (F, G, J)	• (F, G, J)		

Notes

- RoHS-compliant except when supplied with lead (Pb)-containing terminations, codes "W", "Z", and "U"
- Not RoHS-compliant



SELECTION CHART												
DIELECTRIC	BP	BP	BR	BR	BR	BR	BX	BX	BX	BX	BX	BX
STYLE	CDR36	CDR36	CDR36	CDR36	CDR36	CDR36	CDR36	CDR36	CDR36	CDR36	CDR36	CDR36
SLASH SHEET	/12	/12	/12	/12	/12	/12	/12	/12	/12	/12	/12	/12
CASE CODE	0603	0603	0603	0603	0603	0603	0603	0603	0603	0603	0603	0603
VOLTAGE (V _{DC})	6.3	10	16	25	50	100	6.3	10	16	25	50	100
VOLTAGE CODE	W	X	Y	Z	A	B	W	X	Y	Z	A	B
CAP. CODE	CAP.											
101	100	• (J,K,M)	• (J,K,M)	• (J,K,M)	• (J,K,M)	• (J,K,M)	• (J,K,M)	• (J,K,M)	• (J,K,M)	• (J,K,M)	• (J,K,M)	• (J,K,M)
121	120	• (J,K,M)	• (J,K,M)	• (J,K,M)	• (J,K,M)	• (J,K,M)	• (J,K,M)	• (J,K,M)	• (J,K,M)	• (J,K,M)	• (J,K,M)	• (J,K,M)
151	150	• (J,K,M)	• (J,K,M)	• (J,K,M)	• (J,K,M)	• (J,K,M)	• (J,K,M)	• (J,K,M)	• (J,K,M)	• (J,K,M)	• (J,K,M)	• (J,K,M)
181	180	• (J,K,M)	• (J,K,M)	• (J,K,M)	• (J,K,M)	• (J,K,M)	• (J,K,M)	• (J,K,M)	• (J,K,M)	• (J,K,M)	• (J,K,M)	• (J,K,M)
221	220	• (J,K,M)	• (J,K,M)	• (J,K,M)	• (J,K,M)	• (J,K,M)	• (J,K,M)	• (J,K,M)	• (J,K,M)	• (J,K,M)	• (J,K,M)	• (J,K,M)
271	270	• (J,K,M)	• (J,K,M)	• (J,K,M)	• (J,K,M)	• (J,K,M)	• (J,K,M)	• (J,K,M)	• (J,K,M)	• (J,K,M)	• (J,K,M)	• (J,K,M)
331	330	• (J,K,M)	• (J,K,M)	• (J,K,M)	• (J,K,M)	• (J,K,M)	• (J,K,M)	• (J,K,M)	• (J,K,M)	• (J,K,M)	• (J,K,M)	• (J,K,M)
391	390	• (J,K,M)	• (J,K,M)	• (J,K,M)	• (J,K,M)	• (J,K,M)	• (J,K,M)	• (J,K,M)	• (J,K,M)	• (J,K,M)	• (J,K,M)	• (J,K,M)
471	470	• (J,K,M)	• (J,K,M)	• (J,K,M)	• (J,K,M)	• (J,K,M)	• (J,K,M)	• (J,K,M)	• (J,K,M)	• (J,K,M)	• (J,K,M)	• (J,K,M)
561	560	• (J,K,M)	• (J,K,M)	• (J,K,M)	• (J,K,M)	• (J,K,M)	• (J,K,M)	• (J,K,M)	• (J,K,M)	• (J,K,M)	• (J,K,M)	• (J,K,M)
681	680	• (J,K,M)	• (J,K,M)	• (J,K,M)	• (J,K,M)	• (J,K,M)	• (J,K,M)	• (J,K,M)	• (J,K,M)	• (J,K,M)	• (J,K,M)	• (J,K,M)
821	820	• (J,K,M)	• (J,K,M)	• (J,K,M)	• (J,K,M)	• (J,K,M)	• (J,K,M)	• (J,K,M)	• (J,K,M)	• (J,K,M)	• (J,K,M)	• (J,K,M)
102	1000	• (J,K,M)	• (J,K,M)	• (J,K,M)	• (J,K,M)	• (J,K,M)	• (J,K,M)	• (J,K,M)	• (J,K,M)	• (J,K,M)	• (J,K,M)	• (J,K,M)
122	1200	• (J,K,M)	• (J,K,M)	• (J,K,M)	• (J,K,M)	• (J,K,M)	• (J,K,M)	• (J,K,M)	• (J,K,M)	• (J,K,M)	• (J,K,M)	• (J,K,M)
152	1500	• (J,K,M)	• (J,K,M)	• (J,K,M)	• (J,K,M)	• (J,K,M)	• (J,K,M)	• (J,K,M)	• (J,K,M)	• (J,K,M)	• (J,K,M)	• (J,K,M)
182	1800	• (J,K,M)	• (J,K,M)	• (J,K,M)	• (J,K,M)	• (J,K,M)	• (J,K,M)	• (J,K,M)	• (J,K,M)	• (J,K,M)	• (J,K,M)	• (J,K,M)
222	2200	• (J,K,M)	• (J,K,M)	• (J,K,M)	• (J,K,M)	• (J,K,M)	• (J,K,M)	• (J,K,M)	• (J,K,M)	• (J,K,M)	• (J,K,M)	• (J,K,M)
272	2700	• (J,K,M)	• (J,K,M)	• (J,K,M)	• (J,K,M)	• (J,K,M)	• (J,K,M)	• (J,K,M)	• (J,K,M)	• (J,K,M)	• (J,K,M)	• (J,K,M)
332	3300	• (J,K,M)	• (J,K,M)	• (J,K,M)	• (J,K,M)	• (J,K,M)	• (J,K,M)	• (J,K,M)	• (J,K,M)	• (J,K,M)	• (J,K,M)	
392	3900	• (J,K,M)	• (J,K,M)	• (J,K,M)	• (J,K,M)	• (J,K,M)	• (J,K,M)	• (J,K,M)	• (J,K,M)	• (J,K,M)	• (J,K,M)	
472	4700	• (J,K,M)	• (J,K,M)	• (J,K,M)	• (J,K,M)	• (J,K,M)	• (J,K,M)	• (J,K,M)	• (J,K,M)	• (J,K,M)	• (J,K,M)	
562	5600	• (J,K,M)	• (J,K,M)	• (J,K,M)	• (J,K,M)	• (J,K,M)	• (J,K,M)	• (J,K,M)	• (J,K,M)	• (J,K,M)	• (J,K,M)	
682	6800	• (J,K,M)	• (J,K,M)	• (J,K,M)	• (J,K,M)	• (J,K,M)	• (J,K,M)	• (J,K,M)	• (J,K,M)	• (J,K,M)	• (J,K,M)	
822	8200	• (J,K,M)	• (J,K,M)	• (J,K,M)	• (J,K,M)	• (J,K,M)	• (J,K,M)	• (J,K,M)	• (J,K,M)	• (J,K,M)	• (J,K,M)	
103	10 000	• (J,K,M)	• (J,K,M)	• (J,K,M)	• (J,K,M)	• (J,K,M)		• (J,K,M)	• (J,K,M)	• (J,K,M)	• (J,K,M)	• (J,K,M)
123	12 000	• (J,K,M)	• (J,K,M)	• (J,K,M)	• (J,K,M)	• (J,K,M)		• (J,K,M)	• (J,K,M)	• (J,K,M)	• (J,K,M)	
153	15 000	• (J,K,M)	• (J,K,M)	• (J,K,M)	• (J,K,M)	• (J,K,M)		• (J,K,M)	• (J,K,M)	• (J,K,M)	• (J,K,M)	
183	18 000	• (J,K,M)	• (J,K,M)	• (J,K,M)	• (J,K,M)	• (J,K,M)		• (J,K,M)	• (J,K,M)	• (J,K,M)	• (J,K,M)	
223	22 000	• (J,K,M)	• (J,K,M)	• (J,K,M)	• (J,K,M)	• (J,K,M)		• (J,K,M)	• (J,K,M)	• (J,K,M)	• (J,K,M)	
273	27 000	• (J,K,M)	• (J,K,M)	• (J,K,M)	• (J,K,M)	• (J,K,M)		• (J,K,M)	• (J,K,M)	• (J,K,M)	• (J,K,M)	
333	33 000	• (J,K,M)	• (J,K,M)	• (J,K,M)	• (J,K,M)			• (J,K,M)	• (J,K,M)	• (J,K,M)		
393	39 000	• (J,K,M)	• (J,K,M)	• (J,K,M)	• (J,K,M)			• (J,K,M)	• (J,K,M)	• (J,K,M)		
473	47 000	• (J,K,M)	• (J,K,M)	• (J,K,M)	• (J,K,M)			• (J,K,M)	• (J,K,M)	• (J,K,M)		
563	56 000	• (J,K,M)	• (J,K,M)	• (J,K,M)	• (J,K,M)			• (J,K,M)	• (J,K,M)	• (J,K,M)		
683	68 000	• (J,K,M)	• (J,K,M)									
823	82 000	• (J,K,M)	• (J,K,M)									
104	100 000	• (J,K,M)	• (J,K,M)									

Notes

- RoHS-compliant except when supplied with lead (Pb)-containing terminations, codes "W", "Z", and "U"
- Not RoHS-compliant



SELECTION CHART				
DIELECTRIC		BP	BP	BP
STYLE		CDR31	CDR01	CDR31
SLASH SHEET		/7	/1	/7
CASE CODE		0805	0805	0805
VOLTAGE (V _{DC})		50	100	100
VOLTAGE CODE		A	B	B
CAP. CODE	CAPACITANCE			
1R0	1			• (C)
1R1	1.1			• (C)
1R2	1.2			• (C)
1R3	1.3			• (C)
1R5	1.5			• (C)
1R6	1.6			• (C)
1R8	1.8			• (C)
2R0	2			• (C)
2R2	2.2			• (C)
2R4	2.4			• (C)
2R7	2.7			• (C, D)
3R0	3			• (C, D)
3R3	3.3			• (C, D)
3R6	3.6			• (C, D)
3R9	3.9			• (C, D)
4R3	4.3			• (C, D)
4R7	4.7			• (C, D)
5R1	5.1			• (C, D)
5R6	5.6			• (C, D)
6R2	6.2			• (C, D)
6R8	6.8			• (C, D)
7R5	7.5			• (C, D)
8R2	8.2			• (C, D)
9R1	9.1			• (C, D)
100	10		• (J, K)	• (F, J, K)
110	11			• (F, J, K)
120	12		• (J)	• (F, J, K)
130	13			• (F, J, K)
150	15		• (J, K)	• (F, J, K)
160	16			• (F, J, K)
180	18		• (J)	• (F, J, K)
200	20			• (F, J, K)
220	22		• (J, K)	• (F, J, K)
240	24			• (F, J, K)
270	27		• (J)	• (F, J, K)
300	30			• (F, J, K)
330	33		• (J, K)	• (F, J, K)
360	36			• (F, J, K)
390	39		• (J)	• (F, J, K)
430	43			• (F, J, K)
470	47		• (J, K)	• (F, J, K)
510	51			• (F, J, K)
560	56		• (J)	• (F, J, K)
620	62			• (F, J, K)
680	68		• (J, K)	• (F, J, K)
750	75			• (F, J, K)
820	82		• (J)	• (F, J, K)
910	91			• (F, J, K)

Notes

- RoHS-compliant except when supplied with lead (Pb)-containing terminations, codes "W", "Z", and "U"
- Not RoHS-compliant



SELECTION CHART				
DIELECTRIC		BP	BP	BP
STYLE		CDR31	CDR01	CDR31
SLASH SHEET		/7	/1	/7
CASE CODE		0805	0805	0805
VOLTAGE (V _{DC})		50	100	100
VOLTAGE CODE		A	B	B
CAP. CODE	CAPACITANCE			
101	100		• (J, K)	• (F, J, K)
111	110			• (F, J, K)
121	120		• (J, K)	• (F, J, K)
131	130			• (F, J, K)
151	150		• (J, K)	• (F, J, K)
161	160			• (F, J, K)
181	180		• (J, K)	• (F, J, K)
201	200			• (F, J, K)
221	220			• (F, J, K)
241	240			• (F, J, K)
271	270			• (F, J, K)
301	300			• (F, J, K)
331	330			• (F, J, K)
361	360			• (F, J, K)
391	390			• (F, J, K)
431	430			• (F, J, K)
471	470			• (F, J, K)
511	510	• (F, J, K)		
561	560	• (F, J, K)		
621	620	• (F, J, K)		
681	680	• (F, J, K)		

Notes

- RoHS-compliant except when supplied with lead (Pb)-containing terminations, codes “W”, “Z”, and “U”
- Not RoHS-compliant

SELECTION CHART					
DIELECTRIC		BX	BX	BX	BX
STYLE		CDR01	CDR31	CDR01	CDR31
SLASH SHEET		/1	/7	/1	/7
CASE CODE		0805	0805	0805	0805
VOLTAGE (V _{DC})		50	50	100	100
VOLTAGE CODE		A	A	B	B
CAP. CODE	CAPACITANCE				
121	120			• (J, K)	
151	150			• (J, K)	
181	180			• (J, K)	
221	220			• (K, M)	
271	270			• (K)	
331	330			• (K, M)	
391	390			• (K)	
471	470			• (K, M)	• (K, M)
561	560			• (K)	• (K, M)
681	680			• (K, M)	• (K, M)
821	820			• (K)	• (K, M)
102	1000			• (K, M)	• (K, M)
122	1200			• (K)	• (K, M)

Notes

- RoHS-compliant except when supplied with lead (Pb)-containing terminations, codes “W”, “Z”, and “U”
- Not RoHS-compliant



SELECTION CHART					
DIELECTRIC		BX	BX	BX	BX
STYLE		CDR01	CDR31	CDR01	CDR31
SLASH SHEET		/1	/7	/1	/7
CASE CODE		0805	0805	0805	0805
VOLTAGE (V _{DC})		50	50	100	100
VOLTAGE CODE		A	A	B	B
CAP. CODE	CAPACITANCE				
152	1500			• (K, M)	• (K, M)
182	1800			• (K)	• (K, M)
222	2200			• (K, M)	• (K, M)
272	2700			• (K)	• (K, M)
332	3300			• (K, M)	• (K, M)
392	3900	• (K)			• (K, M)
472	4700	• (K, M)			• (K, M)
562	5600		• (K, M)		
682	6800		• (K, M)		
822	8200		• (K, M)		
103	10000		• (K, M)		
123	12000		• (K, M)		
153	15000		• (K, M)		
183	18000		• (K, M)		

Notes

- RoHS-compliant except when supplied with lead (Pb)-containing terminations, codes "W", "Z", and "U"
- Not RoHS-compliant

SELECTION CHART					
DIELECTRIC		BP	BP	BP	BP
STYLE		CDR32	CDR32	CDR32	CDR32
SLASH SHEET		/8	/8	/8	/8
CASE CODE		1206	1206	1206	1206
VOLTAGE (V _{DC})		50	50	100	100
VOLTAGE CODE		A	A	B	B
CAP. CODE	CAPACITANCE				
1R0	1			• (C)	
1R1	1.1			• (C)	
1R2	1.2			• (C)	
1R3	1.3			• (C)	
1R5	1.5			• (C)	
1R6	1.6			• (C)	
1R8	1.8			• (C)	
2R0	2			• (C)	
2R2	2.2			• (C)	
2R4	2.4			• (C)	
2R7	2.7			• (C, D)	
3R0	3			• (C, D)	
3R3	3.3			• (C, D)	
3R6	3.6			• (C, D)	
3R9	3.9			• (C, D)	
4R3	4.3			• (C, D)	
4R7	4.7			• (C, D)	
5R1	5.1			• (C, D)	
5R6	5.6			• (C, D)	
6R2	6.2			• (C, D)	
6R8	6.8			• (C, D)	
7R5	7.5			• (C, D)	

Notes

- RoHS-compliant except when supplied with lead (Pb)-containing terminations, codes "W", "Z", and "U"
- Not RoHS-compliant



SELECTION CHART			
DIELECTRIC		BP	BP
STYLE		CDR32	CDR32
SLASH SHEET		/8	/8
CASE CODE		1206	1206
VOLTAGE (V _{DC})		50	100
VOLTAGE CODE		A	B
CAP. CODE	CAPACITANCE		
8R2	8.2		• (C, D)
9R1	9.1		• (C, D)
100	10		• (F, J, K)
110	11		• (F, J, K)
120	12		• (F, J, K)
150	15		• (F, J, K)
160	16		• (F, J, K)
180	18		• (F, J, K)
200	20		• (F, J, K)
220	22		• (F, J, K)
240	24		• (F, J, K)
270	27		• (F, J, K)
300	30		• (F, J, K)
330	33		• (F, J, K)
360	36		• (F, J, K)
390	39		• (F, J, K)
430	43		• (F, J, K)
470	47		• (F, J, K)
510	51		• (F, J, K)
560	56		• (F, J, K)
620	62		• (F, J, K)
680	68		• (F, J, K)
750	75		• (F, J, K)
820	82		• (F, J, K)
910	91		• (F, J, K)
101	100		• (F, J, K)
111	110		• (F, J, K)
121	120		• (F, J, K)
131	130		• (F, J, K)
151	150		• (F, J, K)
161	160		• (F, J, K)
181	180		• (F, J, K)
201	200		• (F, J, K)
221	220		• (F, J, K)
241	240		• (F, J, K)
271	270		• (F, J, K)
301	300		• (F, J, K)
331	330		• (F, J, K)
361	360		• (F, J, K)
391	390		• (F, J, K)
431	430		• (F, J, K)
471	470		• (F, J, K)
511	510		• (F, J, K)
561	560		• (F, J, K)
621	620		• (F, J, K)
681	680		• (F, J, K)
751	750		• (F, J, K)
821	820		• (F, J, K)
911	910		• (F, J, K)
102	1000		• (F, J, K)

Notes

- RoHS-compliant except when supplied with lead (Pb)-containing terminations, codes "W", "Z", and "U"
- Not RoHS-compliant



SELECTION CHART			
DIELECTRIC		BP	BP
STYLE		CDR32	CDR32
SLASH SHEET		/8	/8
CASE CODE		1206	1206
VOLTAGE (V _{DC})		50	100
VOLTAGE CODE		A	B
CAP. CODE	CAPACITANCE		
112	1100	• (F, J, K)	
122	1200	• (F, J, K)	
132	1300	• (F, J, K)	
152	1500	• (F, J, K)	
162	1600	• (F, J, K)	
182	1800	• (F, J, K)	
202	2000	• (F, J, K)	
222	2200	• (F, J, K)	

Notes

- RoHS-compliant except when supplied with lead (Pb)-containing terminations, codes "W", "Z", and "U"
- Not RoHS-compliant

SELECTION CHART			
DIELECTRIC		BX	BX
STYLE		CDR32	CDR32
SLASH SHEET		/8	/8
CASE CODE		1206	1206
VOLTAGE (V _{DC})		50	100
VOLTAGE CODE		A	B
CAP. CODE	CAPACITANCE		
472	4700		• (K, M)
562	5600		• (K, M)
682	6800		• (K, M)
822	8200		• (K, M)
103	10 000		• (K, M)
123	12 000		• (K, M)
153	15 000		• (K, M)
183	18 000	• (K, M)	
223	22 000	• (K, M)	
273	27 000	• (K, M)	
333	33 000	• (K, M)	
393	39 000	• (K, M)	

Notes

- RoHS-compliant except when supplied with lead (Pb)-containing terminations, codes "W", "Z", and "U"
- Not RoHS-compliant



SELECTION CHART			
DIELECTRIC		BP	BP
STYLE		CDR33	CDR33
SLASH SHEET		/9	/9
CASE CODE		1210	1210
VOLTAGE (V _{DC})		50	100
VOLTAGE CODE		A	B
CAP. CODE	CAPACITANCE		
102	1000		• (F, J, K)
112	1100		• (F, J, K)
122	1200		• (F, J, K)
132	1300		• (F, J, K)
152	1500		• (F, J, K)
162	1600		• (F, J, K)
182	1800		• (F, J, K)
202	2000		• (F, J, K)
222	2200		• (F, J, K)
242	2400	• (F, J, K)	
272	2700	• (F, J, K)	
302	3000	• (F, J, K)	
332	3300	• (F, J, K)	

Notes

- RoHS-compliant except when supplied with lead (Pb)-containing terminations, codes "W", "Z", and "U"
- Not RoHS-compliant

SELECTION CHART			
DIELECTRIC		BX	BX
STYLE		CDR33	CDR33
SLASH SHEET		/9	/9
CASE CODE		1210	1210
VOLTAGE (V _{DC})		50	100
VOLTAGE CODE		A	B
CAP. CODE	CAPACITANCE		
153	15 000		• (K, M)
183	18 000		• (K, M)
223	22 000		• (K, M)
273	27 000		• (K, M)
333	33 000		
393	39 000	• (K, M)	
473	47 000	• (K, M)	
563	56 000	• (K, M)	
683	68 000	• (K, M)	
823	82 000	• (K, M)	
104	100 000	• (K, M)	

Notes

- RoHS-compliant except when supplied with lead (Pb)-containing terminations, codes "W", "Z", and "U"
- Not RoHS-compliant



SELECTION CHART							
DIELECTRIC		BP	BP	BP	BX	BX	BX
STYLE		CDR34	CDR34	CDR34	CDR04	CDR04	CDR04
SLASH SHEET		/10	/1	/10	/1	/10	/10
CASE CODE		1812	1812	1812	1812	1812	1812
VOLTAGE (V _{DC})		50	100	100	50	50	100
VOLTAGE CODE		A	B	B	A	A	B
CAP. CODE	CAPACITANCE						
122	1200		• (J)				
152	1500		• (J, K)				
182	1800		• (J)				
222	2200		• (J, K)	• (F, J, K)			
242	2400			• (F, J, K)			
272	2700		• (J)	• (F, J, K)			
302	3000			• (F, J, K)			
332	3300		• (J, K)	• (F, J, K)			
362	3600			• (F, J, K)			
392	3900			• (F, J, K)			
432	4300			• (F, J, K)			
472	4700			• (F, J, K)			
512	5100	• (F, J, K)					
562	5600	• (F, J, K)					
622	6200	• (F, J, K)					
682	6800	• (F, J, K)					
752	7500	• (F, J, K)					
822	8200	• (F, J, K)					
912	9100	• (F, J, K)					
103	10 000	• (F, J, K)					
113	11 000						
123	12 000						
133	13 000						
153	15 000						
163	16 000						
183	18 000						
203	20 000						
223	22 000						
273	27 000						• (K, M)
333	33 000						• (K, M)
393	39 000					• (K)	• (K, M)
473	47 000					• (K, M)	• (K, M)
563	56 000					• (K)	• (K, M)
683	68 000						
823	82 000				• (K)		
104	100 000				• (K, M)	• (K, M)	
124	120 000				• (K)	• (K, M)	
154	150 000				• (K, M)	• (K, M)	
184	180 000				• (K)	• (K, M)	
224	220 000						
274	270 000						
334	330 000						
394	390 000						
474	470 000						

Notes

- RoHS-compliant except when supplied with lead (Pb)-containing terminations, codes "W", "Z", and "U"
- Not RoHS-compliant



SELECTION CHART					
DIELECTRIC		BP	BP	BX	BX
STYLE		CDR35	CDR35	CDR35	CDR35
SLASH SHEET		/11	/11	/11	/11
CASE CODE		1825	1825	1825	1825
VOLTAGE (V _{DC})		50	100	50	100
VOLTAGE CODE		A	B	A	B
CAP. CODE	CAPACITANCE				
472	4700		• (F, J, K)		
512	5100		• (F, J, K)		
562	5600		• (F, J, K)		
622	6200		• (F, J, K)		
682	6800		• (F, J, K)		
752	7500		• (F, J, K)		
822	8200		• (F, J, K)		
912	9100		• (F, J, K)		
103	10 000		• (F, J, K)		
113	11 000	• (F, J, K)			
123	12 000	• (F, J, K)			
133	13 000	• (F, J, K)			
153	15 000	• (F, J, K)			
163	16 000	• (F, J, K)			
183	18 000	• (F, J, K)			
203	20 000	• (F, J, K)			
223	22 000	• (F, J, K)			
273	27 000				
333	33 000				
393	39 000				
473	47 000				
563	56 000				• (K, M)
683	68 000				• (K, M)
823	82 000				• (K, M)
104	100 000				• (K, M)
124	120 000				• (K, M)
154	150 000				• (K, M)
184	180 000			• (K, M)	
224	220 000			• (K, M)	
274	270 000			• (K, M)	
334	330 000			• (K, M)	
394	390 000			• (K, M)	
474	470 000			• (K, M)	

Notes

- RoHS-compliant except when supplied with lead (Pb)-containing terminations, codes “W”, “Z”, and “U”
- Not RoHS-compliant



SELECTION CHART				
DIELECTRIC		BP	BP	BP
STYLE		CDR02	CDR02	CDR02
SLASH SHEET		/1	/1	/1
CASE CODE		1805	1805	1805
VOLTAGE (V _{DC})		100	50	100
VOLTAGE CODE		B	A	B
CAP. CODE	CAPACITANCE			
221	220	• (J, K)		
271	270	• (J)		
392	3900			• (K)
472	4700			• (K, M)
562	5600			• (K)
682	6800			• (K, M)
822	8200			• (K)
103	10 000			• (K, M)
123	12 000		• (K)	
153	15 000		• (K, M)	
183	18 000		• (K)	
223	22 000		• (K, M)	

Notes

- RoHS-compliant except when supplied with lead (Pb)-containing terminations, codes "W", "Z", and "U"
- Not RoHS-compliant

SELECTION CHART					
DIELECTRIC		BP	BX	BX	BX
STYLE		CDR03	CDR03	CDR03	CDR06
SLASH SHEET		/1	/1	/1	/3
CASE CODE		1808	1808	1808	2225
VOLTAGE (V _{DC})		100	50	100	50
VOLTAGE CODE		B	A	B	A
CAP. CODE	CAPACITANCE				
331	330	• (J, K)			
391	390	• (J)			
471	470	• (J, K)			
561	560	• (J)			
681	680	• (J, K)			
821	820	• (J)			
102	1000	• (J, K)			
123	12 000			• (K)	
153	15 000			• (K, M)	
183	18 000			• (K)	
223	22 000			• (K, M)	
273	27 000			• (K)	
333	33 000			• (K, M)	
393	39 000		• (K)		
473	47 000		• (K, M)		
563	56 000		• (K)		
683	68 000		• (K, M)		
394	390 000				• (K)
474	470 000				• (K, M)

Notes

- RoHS-compliant except when supplied with lead (Pb)-containing terminations, codes "W", "Z", and "U"
- Not RoHS-compliant



TAPE AND REEL QUANTITIES (1)(2)(3)								
STYLES	BODY SIZE	TAPE SIZE	7" REEL QUANTITIES			11 1/4" AND 13" REEL QUANTITIES		BULK
			PACKAGING CODE			PACKAGING CODE		
			"C"	"T"	"J"	"P"	"R"	
CDR37	0402	8 mm	5000	n/a	1000	10 000	n/a	100
CDR36	0603	8 mm	4000	n/a	1000	10 000	n/a	100
CDR01, CDR31	0805	8 mm	3000	3000	1000	10 000	10 000	100
CDR32	1206	8 mm	n/a	3000	1000	n/a	10 000	100
CDR33	1210	8 mm	n/a	3000	1000	n/a	10 000	100
CDR02	1805	12 mm	n/a	2000	500	n/a	10 000	100
CDR03	1808	12 mm	n/a	2000	500	n/a	10 000	100
CDR04, CDR34	1812	12 mm	n/a	1000	500	n/a	4000	100
CDR35	1825	12 mm	n/a	1000	500	n/a	4000	100
CDR06	2225	12 mm	n/a	500	250	n/a	4000	100

Notes

- (1) Vishay Vitramon uses embossed plastic carrier tape and punched paper carrier tape
- (2) Paper tape is not available for case sizes > 1206 or for component thickness > 0.035" (0.89 mm)
- (3) DC voltage rating should not be exceeded in application

STORAGE AND HANDLING CONDITIONS
<p>(1) Store the components at 5 °C to +40 °C ambient temperature and ≤ 70 % related humidity conditions</p> <p>(2) The product is recommended to be used within a time-frame of 2 years after shipment. Check solderability in case extended shelf life beyond the expiry date is needed</p> <p>Precautions:</p> <ul style="list-style-type: none"> a. Do not store products in an environment containing corrosive elements, especially where chloride gas, sulfide gas, acid, alkali, salt or the like are present. This may cause corrosion or oxidization of the terminations, which can easily lead to poor soldering b. Store products on the shelf and avoid exposure to moisture or dust c. Do not expose products to excessive shock, vibration, direct sunlight and so on



Disclaimer

ALL PRODUCT, PRODUCT SPECIFICATIONS AND DATA ARE SUBJECT TO CHANGE WITHOUT NOTICE TO IMPROVE RELIABILITY, FUNCTION OR DESIGN OR OTHERWISE.

Vishay Intertechnology, Inc., its affiliates, agents, and employees, and all persons acting on its or their behalf (collectively, "Vishay"), disclaim any and all liability for any errors, inaccuracies or incompleteness contained in any datasheet or in any other disclosure relating to any product.

Vishay makes no warranty, representation or guarantee regarding the suitability of the products for any particular purpose or the continuing production of any product. To the maximum extent permitted by applicable law, Vishay disclaims (i) any and all liability arising out of the application or use of any product, (ii) any and all liability, including without limitation special, consequential or incidental damages, and (iii) any and all implied warranties, including warranties of fitness for particular purpose, non-infringement and merchantability.

Statements regarding the suitability of products for certain types of applications are based on Vishay's knowledge of typical requirements that are often placed on Vishay products in generic applications. Such statements are not binding statements about the suitability of products for a particular application. It is the customer's responsibility to validate that a particular product with the properties described in the product specification is suitable for use in a particular application. Parameters provided in datasheets and / or specifications may vary in different applications and performance may vary over time. All operating parameters, including typical parameters, must be validated for each customer application by the customer's technical experts. Product specifications do not expand or otherwise modify Vishay's terms and conditions of purchase, including but not limited to the warranty expressed therein.

Except as expressly indicated in writing, Vishay products are not designed for use in medical, life-saving, or life-sustaining applications or for any other application in which the failure of the Vishay product could result in personal injury or death. Customers using or selling Vishay products not expressly indicated for use in such applications do so at their own risk. Please contact authorized Vishay personnel to obtain written terms and conditions regarding products designed for such applications.

No license, express or implied, by estoppel or otherwise, to any intellectual property rights is granted by this document or by any conduct of Vishay. Product names and markings noted herein may be trademarks of their respective owners.