

Printed Circuit Board Modular Jacks (Continued)

Shielded, Through-Hole, Side Entry, Low Profile

Product Facts

- Both jacks and plugs have tin-lead plated shields
- Modular jacks are available with two grounding paths—pc board and panel
- Jack and plug system offer 20 dB shielding effectiveness from 30 MHz to 400 MHz
- Meets or exceeds FCC Part 68 rules and regulations; REA PE-76; and UL 1863, Communication Circuit Accessories
- Selectively gold plated contacts for lower cost
- Listed by Underwriters Laboratories Inc., File No. E81956
- Certified by Canadian Standards Association, File No. LR 7182



Specifications

Electrical:

Current Rating - 1.5 amp max. @ 25°C, derated to 0.2 amp max. @ 70°C ambient

Voltage Rating - 150 volts ac max.
Dielectric Withstanding Voltage - 1000 VAC, RMS, 60 Hz, 1 min.

Insulation Resistance - 500 megohms min.

Surge Test - to 1000 volts

Mechanical:

Pc Board Retention - will not dislodge from pc board when subjected to 1 lb [4.4N] pull before soldering and 10 lbs [44N] pull after soldering

Durability - 750 mating cycles

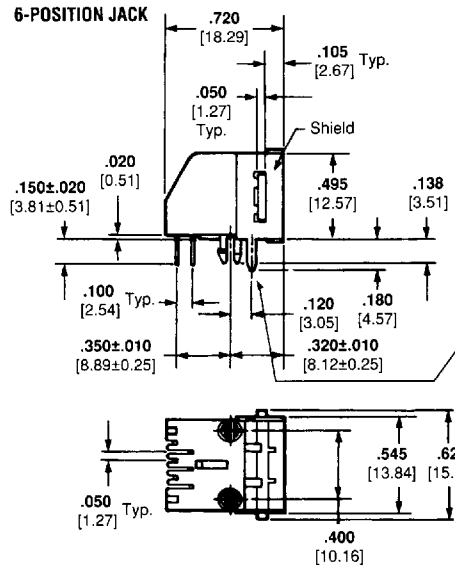
Material and Finish:

Housing - Polyester (wave solder compatible), UL 94V-0 rated
Contact - .014 [0.36] thk. phosphor bronze; plated .000050 [0.00127] gold in contact area and .000150 [0.00381] tin-lead on solder tails, over .000050 [0.00127] nickel underplate

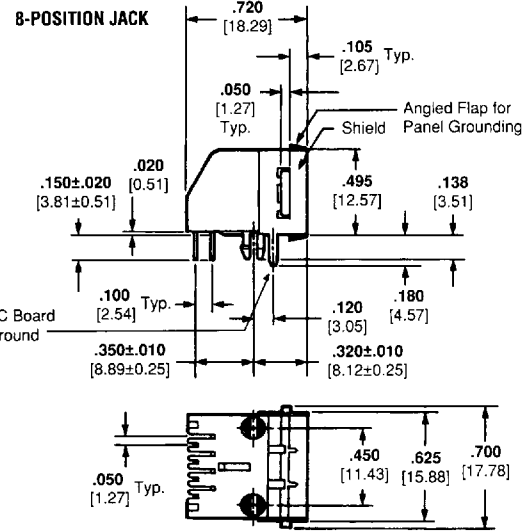
Technical Documents

Application Specifications
114-02048

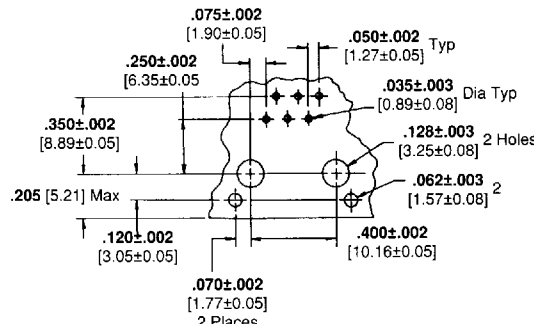
Product Specifications
108-01163



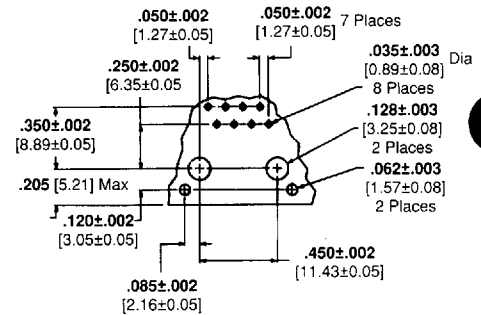
SHOWN WITH PC BOARD GROUND



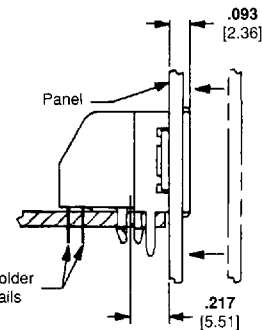
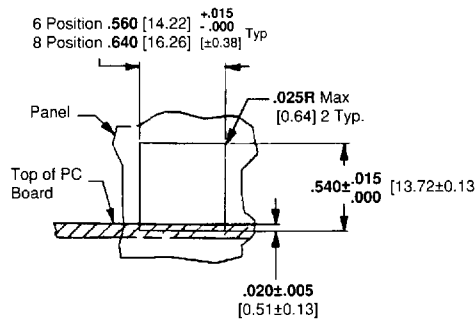
SHOWN WITH PANEL GROUND SHIELD AND PC BOARD GROUND



SUGGESTED PC BOARD LAYOUT - Non-Component Side Shown



SUGGESTED PANEL CUTOUT



Description	Style	Contacts Loaded	Part Numbers	
			Tray Packed	Tube Loaded
6-Position Shielded Jack	Pc Board Ground	6	555154-1	—
	Panel Ground	4	555154-2	—
8-Position Shielded Jack	Pc Board Ground	6	555140-1	—
	Panel Ground	4	555140-2	—
8-Position Shielded Jack Keyed	Pc Board Ground	8	555153-1	555153-3
	Panel Ground	8	555141-1	—
8-Position Shielded Jack Keyed	Pc Board Ground	8	556591-1	—

Note: On any modular jack, Terminal No. 1 is the terminal to the extreme left as you face the jack opening, tab notch down.

For drawings or technical data, contact your AMP sales engineer or call the AMP Product Information Center: 1-800-522-6752. Dimensions are in inches and millimeters unless otherwise specified. Values in brackets are metric equivalents. Specifications subject to change. Consult AMP for latest specifications.