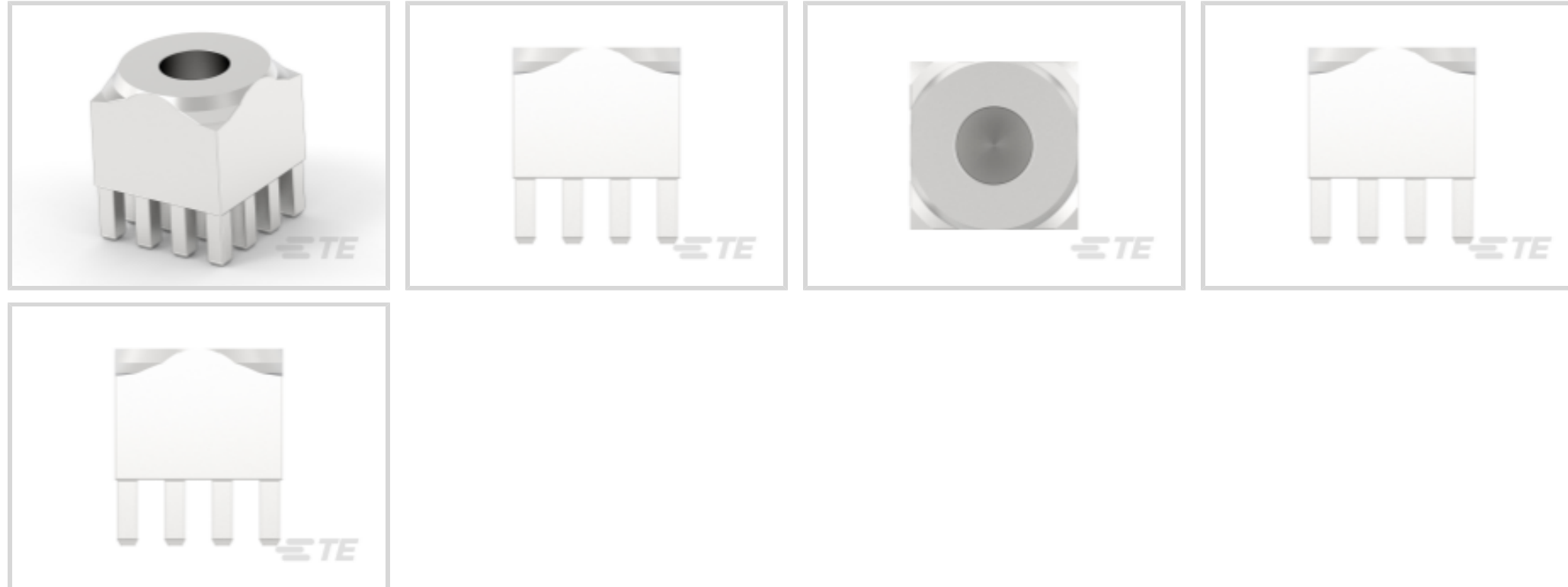




Connectors > PCB Connectors > PCB Headers & Receptacles



Connector System: **Cable-to-Board**

Number of Positions: **1**

PCB Mount Orientation: **Vertical**

Termination Method to Printed Circuit Board: **Through Hole - Press-Fit**

Contact Mating Area Plating Material: **Tin (Sn)**

Features

Product Type Features

Connector System	Cable-to-Board
Connector & Contact Terminates To	Printed Circuit Board
PCB Connector Assembly Type	PCB Mount Receptacle

Configuration Features

Number of Positions	1
PCB Mount Orientation	Vertical

Contact Features

Contact Underplating Material Thickness	1 – 3 μm [39.37 – 118.11 μin]
Contact Mating Area Plating Material Thickness	2 – 6 μm [78.74 – 236.22 μin]
PCB Contact Termination Area Plating Material Finish	Matte
Contact Mating Area Plating Material Finish	Matte
Contact Underplating Material	Copper
PCB Contact Termination Area Plating Material	Tin
Contact Base Material	Copper Alloy
Contact Mating Area Plating Material	Tin (Sn)



Contact Type	Socket
Contact Current Rating (Max)	160 A

Termination Features

Termination Post & Tail Length	3.5 mm[.138 in]
Termination Method to Printed Circuit Board	Through Hole - Press-Fit

Mechanical Attachment

Connector Mounting Type	Board Mount
Mating Alignment	Without
PCB Mount Alignment	With
PCB Mount Retention	With

Usage Conditions

Operating Temperature (Max)	135 °C[275 °F]
Operating Temperature Range	-40 – 135 °C[-40 – 275 °F]

Operation/Application

Circuit Application	Power
---------------------	-------

Packaging Features

Packaging Type	Package
----------------	---------

Product Compliance

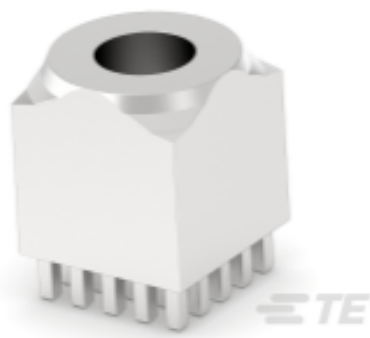
[For compliance documentation, visit the product page on TE.com>](#)

EU RoHS Directive 2011/65/EU	Compliant with Exemptions
EU ELV Directive 2000/53/EC	Not Yet Reviewed
China RoHS 2 Directive MIIT Order No 32, 2016	Restricted Materials Above Threshold
EU REACH Regulation (EC) No. 1907/2006	Current ECHA Candidate List: JAN 2023 (233) Candidate List Declared Against: JUNE 2022 (224) SVHC > Threshold: Pb (4% in Component Part) Article Safe Usage Statements: Do not eat, drink or smoke when using this product. Wash thoroughly after handling. Recycle if possible and dispose of the article by following all applicable governmental regulations relevant to your geographic location.
Halogen Content	Not Yet Reviewed for halogen content
Solder Process Capability	Not reviewed for solder process capability

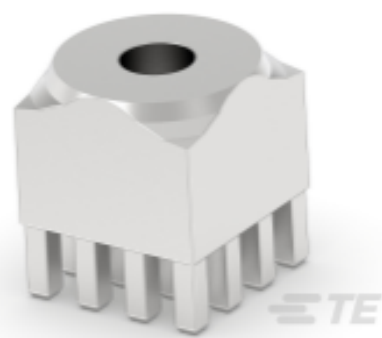
Product Compliance Disclaimer

This information is provided based on reasonable inquiry of our suppliers and represents our current actual knowledge based on the information they provided. This information is subject to change. The part numbers that TE has identified as EU RoHS compliant have a maximum concentration of 0.1% by weight in homogenous materials for lead, hexavalent chromium, mercury, PBB, PBDE, DBP, BBP, DEHP, DIBP, and 0.01% for cadmium, or qualify for an exemption to these limits as defined in the Annexes of Directive 2011/65/EU (RoHS2). Finished electrical and electronic equipment products will be CE marked as required by Directive 2011/65/EU. Components may not be CE marked. Additionally, the part numbers that TE has identified as EU ELV compliant have a maximum concentration of 0.1% by weight in homogenous materials for lead, hexavalent chromium, and mercury, and 0.01% for cadmium, or qualify for an exemption to these limits as defined in the Annexes of Directive 2000/53/EC (ELV). Regarding the REACH Regulation, the information TE provides on SVHC in articles for this part number is based on the latest European Chemicals Agency (ECHA) 'Guidance on requirements for substances in articles' posted at this URL: <https://echa.europa.eu/guidance-documents/guidance-on-reach>

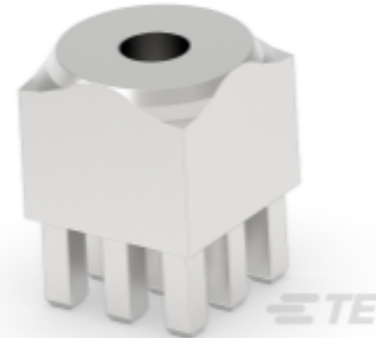
Compatible Parts



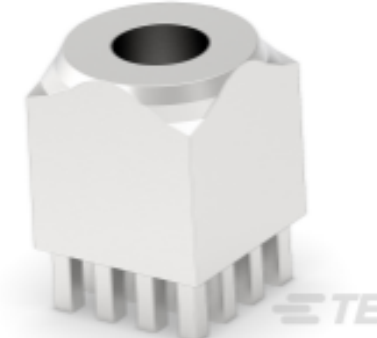
TE Part # 225685-E
POWELM BUCHSE VOLLM M8 8 2,54
* EP 13,5



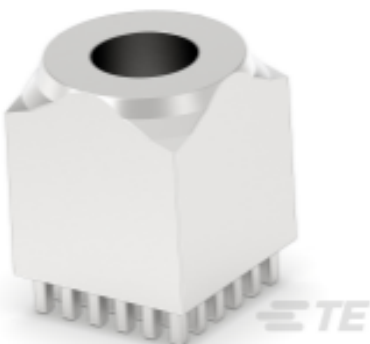
TE Part # 225682-E
POWELM BUCHSE VOLLM M4 4 2,54
* EP 7 CUS



TE Part # 225681-E
POWELM BUCHSE VOLLM M3 3,5
2,54 * EP 6 C



TE Part # 225684-E
POWELM BUCHSE VOLLM M6 6,5
2,54 * EP 10,



TE Part # 225686-E
POWELM BUCHSE VOLLM M10 11
2,54 * EP 17,

Customers Also Bought



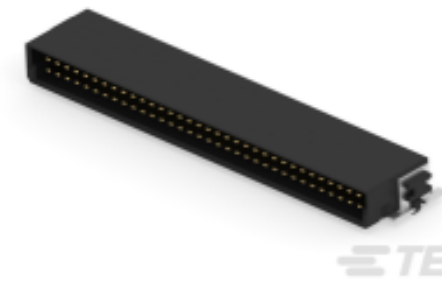
TE Part #9-160313-2
PIDG FASTON Receptacle Quick
Disconnects



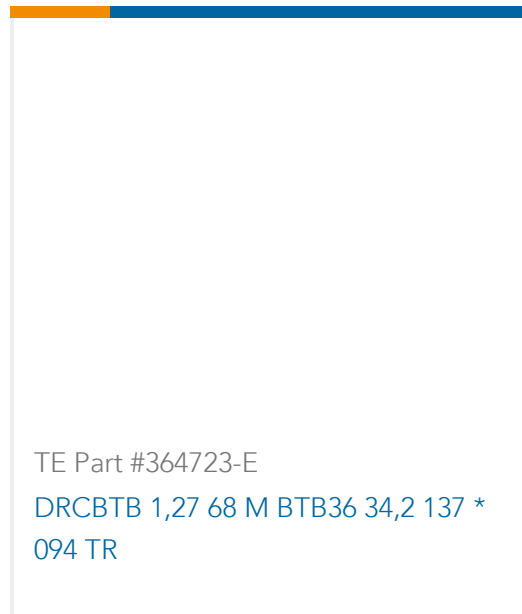
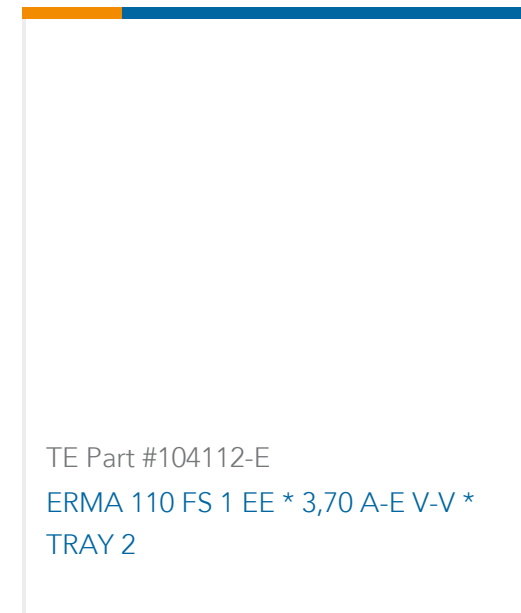
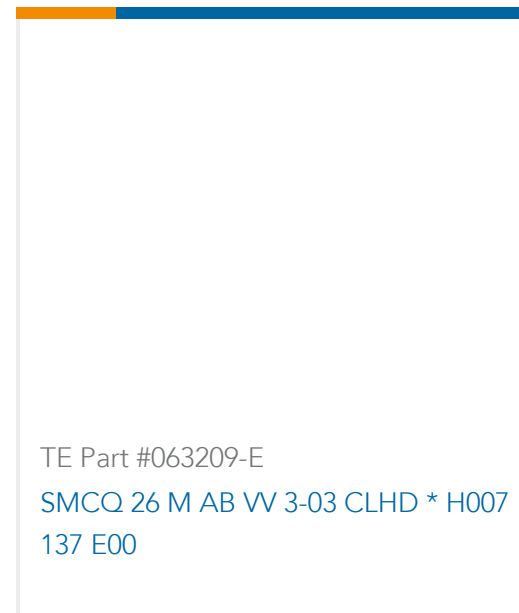
TE Part #2-1879337-0
CPF 0603 3K92 1% 50PPM 1K RL



TE Part #154743-E
SMCQ 68 F AB VV 7-03 CL * 0007 137
E002



TE Part #154766-E
SMCB 68 M AB VV 7-03 CL * 0007 137
E004



Documents

CAD Files

Customer View Model

[ENG_CVM_CVM_225683-E_1.3d_igs.zip](#)

English

Customer View Model

[ENG_CVM_CVM_225683-E_1.3d_stp.zip](#)

English

Customer View Model

[ENG_CVM_CVM_225683-E_1.2d_dxf.zip](#)

English

3D PDF

3D

By downloading the CAD file I accept and agree to the [Terms and Conditions](#) of use.

Datasheets & Catalog Pages

Data Sheet - ERNI PowerElements

English

Data Sheet - ERNI PowerElements

German