



Terminals & Splices > Rings & Spades



Terminal & Splice Type: Ring Tongue

Wire Size: 190000 – 231100 CMA

Stud Size: 7/16

Features

Product Type Features

Shape Description	RING-051
Stud Size	7/16
Barrel Type	Closed Barrel
Sealable	No
Insulated	No
Wire/Cable Type	Regular Wire
Support Style	Insulation Support

Configuration Features

Number of Holes	2
Terminal Angle	Straight

Body Features

Weight per Piece	52.62 g
Plating Material	Tin

Contact Features

Military Part Class	Class II
Terminal & Splice Type	Ring Tongue
Terminal Orientation	Offset

Mechanical Attachment

Wire Insulation Support	Without
-------------------------	---------

Dimensions



Wire Size	190000 – 231100 CMA
Stud Diameter	11.1 mm[.437 in]
Tongue Thickness	2.59 mm[.102 in]
Overall Length	55.32 mm[2.178 in]
Barrel Inside Diameter	16.13 mm[.635 in]

Usage Conditions

Operating Temperature Range	170 °C[338 °F]
-----------------------------	----------------

Operation/Application

Heavy Duty	No
------------	----

Industry Standards

Government Qualified	Yes
----------------------	-----

Packaging Features

Packaging Quantity	50
Packaging Method	Loose Piece

Product Compliance

For compliance documentation, visit the product page on TE.com>

EU RoHS Directive 2011/65/EU	Compliant
EU ELV Directive 2000/53/EC	Compliant
China RoHS 2 Directive MIIT Order No 32, 2016	No Restricted Materials Above Threshold
EU REACH Regulation (EC) No. 1907/2006	Current ECHA Candidate List: JAN 2019 (197) Candidate List Declared Against: JAN 2019 (197)
Halogen Content	Low Halogen - Br, Cl, F, I < 900 ppm per homogenous material. Also BFR/CFR/PVC Free
Solder Process Capability	Not applicable for solder process capability


Product Compliance Disclaimer

This information is provided based on reasonable inquiry of our suppliers and represents our current actual knowledge based on the information they provided. This information is subject to change. The part numbers that TE has identified as EU RoHS compliant have a maximum concentration of 0.1% by weight in homogenous materials for lead, hexavalent chromium, mercury, PBB, PBDE, DBP, BBP, DEHP, DIBP, and 0.01% for cadmium, or qualify for an exemption to these limits as defined in the Annexes of Directive 2011/65/EU (RoHS2). Finished electrical and electronic equipment products will be CE marked as required by Directive 2011/65/EU. Components may not be CE marked. Additionally, the part numbers that TE has identified as EU ELV compliant have a maximum concentration of 0.1% by weight in homogenous materials for lead, hexavalent chromium, and mercury, and 0.01% for cadmium, or qualify for an exemption to these limits as defined in the Annexes of Directive 2000/53/EC (ELV). Regarding the REACH Regulations, TE’s information on SVHC in




articles for this part number is still based on the European Chemical Agency (ECHA) ‘Guidance on requirements for substances in articles’(Version: 2, April 2011), applying the 0.1% weight on weight concentration threshold at the finished product level. TE is aware of the European Court of Justice ruling of September 10th, 2015 also known as O5A (Once An Article Always An Article) stating that, in case of ‘complex object’, the threshold for a SVHC must be applied to both the product as a whole and simultaneously to each of the articles forming part of its composition. TE has evaluated this ruling based on the new ECHA “Guidance on requirements for substances in articles” (June 2017, version 4.0) and will be updating its statements accordingly.


Compatible Parts



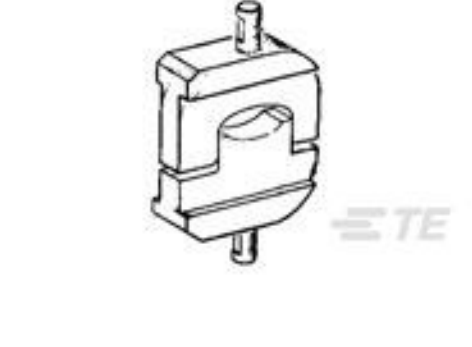
TE Part # 300430
NEST INSERT SOLIS 065,
067 4/0




TE Part # 1490414-3
INDENT,U-DIE,
SOLISTRAN 1/0-4/0



TE Part # 1490413-8
NEST,U-DIE,SOLISTRAND
4/0




TE Part # 45445
DIE SOLIS 69099 4/0




TE Part # 48131
IND INSERT SOLIS 1/0-4/0


Customers Also Bought




TE Part #1490414-3
INDENT,U-DIE,
SOLISTRAN 1/0-4/0



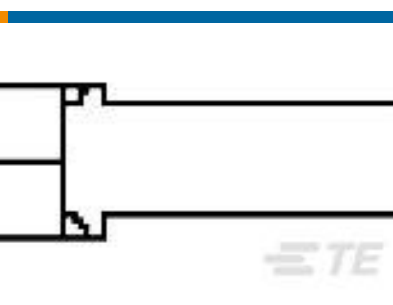
TE Part #36918
TERMINAL,SOLIS R 1/0 7
/16




TE Part #321872
TERMINAL,SOLIS R 2/0 7
/16




TE Part #320741
TERMINAL,SOLIS R 2 7/16




TE Part #322445
TAB,SOLIS 8



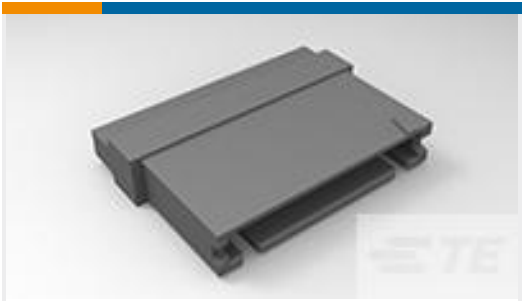
TE Part #1-487769-3
015 HOUSING FFC RCPT
100CL SR



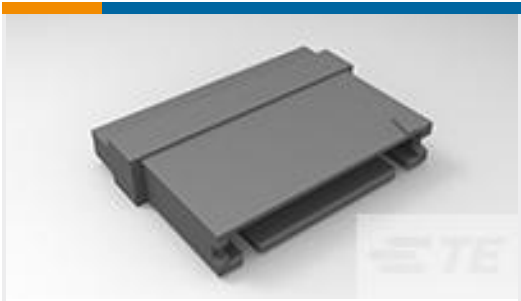
TE Part #1490413-8
NEST,U-DIE,SOLISTRAND
4/0



TE Part #1490413-5
NEST,U-DIE,SOLISTRAND
1/0



TE Part #1-485893-1
 013 HOUSING FFC PIN
 100CL SR



TE Part #1-485893-3
 015 HOUSING FFC PIN
 100CL SR

Documents

Product Drawings

TERMINAL,SOLIS R 4/0 7/16

English

CAD Files

3D PDF

3D

Customer View Model

ENG_CVM_CVM_321879_R.2d_dxf.zip

English

Customer View Model

ENG_CVM_CVM_321879_R.3d_igs.zip

English

Customer View Model

ENG_CVM_CVM_321879_R.3d_stp.zip

English

Agency Approvals

UL

English