

AMP MONO-SHAPE 2 POS P.C.B.CON

✓ ACTIVE

RAST | RAST 5 IDC Connectors

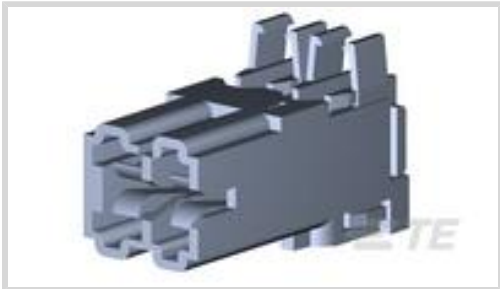
TE Part # 2-282042-5

TE Internal #: 2-282042-5

[View on TE.com >](#)



Connectors > PCB Connectors > Wire-to-Board Connectors > Wire-to-Board Headers & Receptacles



Connector System: **Wire-to-Board**

Number of Positions: **2**

Centerline (Pitch): **5 mm [ .197 in ]**

Number of Rows: **1**

Contact Mating Area Plating Material: **Tin**

Features

Product Type Features

Connector System	Wire-to-Board
Header Type	Shrouded
Sealable	No
Connector & Contact Terminates To	Printed Circuit Board

Configuration Features

Short Circuit Position	None
Number of Positions	2
Number of Rows	1

Electrical Characteristics

Operating Voltage	220 VAC
-------------------	---------

Contact Features

Contact Layout	Inline
PCB Contact Termination Area Plating Material Thickness	2 µm
PCB Contact Termination Area Plating Material	Tin
Contact Base Material	Brass
Contact Mating Area Plating Material	Tin
Contact Mating Area Plating Material Thickness	2 µm[78.74 µin]
Contact Current Rating (Max)	6 A

Termination Features

--	--



Termination Method to Wire & Cable	Insulation Displacement Crimp (IDC)
------------------------------------	-------------------------------------

Mechanical Attachment

Mating Alignment Type	Polarization
Mating Alignment	With
PCB Mount Alignment	Without
Mating Retention	With
PCB Mount Retention	Without
Connector Mounting Type	Cable Mount (Free-Hanging)

Housing Features

Centerline (Pitch)	5 mm[.197 in]
Housing Color	Black
Housing Material	Nylon

Dimensions

Connector Length	14.9 mm[.59 in]
Wire Size	.5 – .75 mm <sup>2</sup>

Usage Conditions

Operating Temperature Range	-25 – 105 °C[-13 – 221 °F]
-----------------------------	----------------------------

Operation/Application

Circuit Application	Power
---------------------	-------

Industry Standards

UL Flammability Rating	UL 94V-0
------------------------	----------

Packaging Features

Packaging Method	Box
------------------	-----

Product Compliance

For compliance documentation, visit the product page on TE.com>

EU RoHS Directive 2011/65/EU	Compliant
EU ELV Directive 2000/53/EC	Compliant
China RoHS 2 Directive MIIT Order No 32, 2016	No Restricted Materials Above Threshold
EU REACH Regulation (EC) No. 1907/2006	Current ECHA Candidate List: JAN 2019 (197) Candidate List Declared Against: JAN 2019 (197)



Halogen Content	Not Low Halogen - contains Br or Cl > 900 ppm.
Solder Process Capability	Not applicable for solder process capability

Product Compliance Disclaimer







This information is provided based on reasonable inquiry of our suppliers and represents our current actual knowledge based on the information they provided. This information is subject to change. The part numbers that TE has identified as EU RoHS compliant have a maximum concentration of 0.1% by weight in homogenous materials for lead, hexavalent chromium, mercury, PBB, PBDE, DBP, BBP, DEHP, DIBP, and 0.01% for cadmium, or qualify for an exemption to these limits as defined in the Annexes of Directive 2011/65/EU (RoHS2). Finished electrical and electronic equipment products will be CE marked as required by Directive 2011/65/EU. Components may not be CE marked. Additionally, the part numbers that TE has identified as EU ELV compliant have a maximum concentration of 0.1% by weight in homogenous materials for lead, hexavalent chromium, and mercury, and 0.01% for cadmium, or qualify for an exemption to these limits as defined in the Annexes of Directive 2000/53/EC (ELV). Regarding the REACH Regulations, TE's information on SVHC in articles for this part number is still based on the European Chemical Agency (ECHA) 'Guidance on requirements for substances in articles'(Version: 2, April 2011), applying the 0.1% weight on weight concentration threshold at the finished product level. TE is aware of the European Court of Justice ruling of September 10th, 2015 also known as O5A (Once An Article Always An Article) stating that, in case of 'complex object', the threshold for a SVHC must be applied to both the product as a whole and simultaneously to each of the articles forming part of its composition. TE has evaluated this ruling based on the new ECHA "Guidance on requirements for substances in articles" (June 2017, version 4.0) and will be updating its statements accordingly.

Also in the Series | RAST 5 IDC Connectors

Automotive, Truck, Bus, & Off-Road Terminals(8)	Connector Contacts(12)	Crimp Terminal Housings (41)	Rectangular Connector Housings(1)
Standard Edge Connectors (4)	Wire-to-Board Connector Contacts(1)	Wire-to-Board Connector Housings(217)	Wire-to-Board Headers & Receptacles(459)

Customers Also Bought



			
TE Part #T0931000425-000 CODING-PIN-M3-LTM	TE Part #T0931100423-000 CODING-PIN-M3-STM	TE Part #T0932000423-000 CODING-PIN-M3-STM	TE Part #3-643995-3 03P MTA156 PST CONN ASSY LF
			
TE Part #63664-1 MAG-MATE 27-23 187 FTAB TPBR	TE Part #1532250-2 M83513/10-A01CP = MCKS-C2-P-9PRT1	TE Part #1532251-2 M83513/10-B01CP = MCKS-C2-P-15PRT1	TE Part #2-282042-3 AMP MONO-SHAPE 2 POS P.C.B.CON
			
TE Part #5-316087-1 2.5 SIGNAL D/LOCK CAP HSG 3P(GWT)	TE Part #9-1625892-6 3W SM M/OX 2% 1R2		

Documents

Product Drawings

AMP MONO-SHAPE 2 POS P.C.B.CON

English

CAD Files

3D PDF

3D

Customer View Model

ENG\_CVM\_CVM\_2-282042-5\_U.2d\_dxf.zip

English

Customer View Model

ENG\_CVM\_CVM\_2-282042-5\_U.3d\_igs.zip

English

Customer View Model

ENG\_CVM\_CVM\_2-282042-5\_U.3d\_stp.zip

English

Datasheets & Catalog Pages

1654742\_HOUSEHOLD\_APPLIANCES\_RAST5



English

- Product Specifications
- Application Specification

English

- Agency Approvals
- VDE Certificate

English