

10EEA2=F7531G S0 ✓ ACTIVE

Corcom | Corcom EEA

TE Part # 1-6609000-1

TE Internal #: 1-6609000-1

CORCOM EEA SERIES IEC FILTERED INLETS

[View on TE.com >](#)



EMI Filters > Multi-Function Inlet Filters > CORCOM EEA SERIES IEC FILTERED INLETS



Filter Type: **Power Line**

Mount Angle: **Right Angle**

Leakage Current (Max) (120VAC, 60Hz): **220  $\mu$ A**

Leakage Current (Max) (250VAC, 50Hz): **380  $\mu$ A**

Current Rating: **10 A**

[All CORCOM EEA SERIES IEC FILTERED INLETS \(18\)](#)

## Features

### Product Type Features

Ground Choke Option	No
Ground Option	None
Filter Type	Power Line
Input Type	IEC
Output Type	.250" FASTON
Filtered	Yes
Type of Connector	IEC 60320-1 C-14

### Electrical Characteristics

Leakage Current (Max) (120VAC, 60Hz)	220 $\mu$ A
Leakage Current (Max) (250VAC, 50Hz)	380 $\mu$ A
Current Rating	10 A
Voltage (Max)	250 VAC

### Mechanical Attachment

Mount Angle	Right Angle
Mount Style	Flanged

### Usage Conditions

Operating Temperature Range	-10 – 40 °C
-----------------------------	-------------

## Product Compliance

[For compliance documentation, visit the product page on TE.com>](#)

EU RoHS Directive 2011/65/EU	Compliant
EU ELV Directive 2000/53/EC	Compliant
China RoHS 2 Directive MIIT Order No 32, 2016	No Restricted Materials Above Threshold
EU REACH Regulation (EC) No. 1907/2006	Current ECHA Candidate List: JAN 2019 (197) Candidate List Declared Against: JAN 2019 (197)
Halogen Content	Not Low Halogen - contains Br or Cl > 900 ppm.
Solder Process Capability	Not applicable for solder process capability

### Product Compliance Disclaimer

This information is provided based on reasonable inquiry of our suppliers and represents our current actual knowledge based on the information they provided. This information is subject to change. The part numbers that TE has identified as EU RoHS compliant have a maximum concentration of 0.1% by weight in homogenous materials for lead, hexavalent chromium, mercury, PBB, PBDE, DBP, BBP, DEHP, DIBP, and 0.01% for cadmium, or qualify for an exemption to these limits as defined in the Annexes of Directive 2011/65/EU (RoHS2). Finished electrical and electronic equipment products will be CE marked as required by Directive 2011/65/EU. Components may not be CE marked. Additionally, the part numbers that TE has identified as EU ELV compliant have a maximum concentration of 0.1% by weight in homogenous materials for lead, hexavalent chromium, and mercury, and 0.01% for cadmium, or qualify for an exemption to these limits as defined in the Annexes of Directive 2000/53/EC (ELV). Regarding the REACH Regulations, TE's information on SVHC in articles for this part number is still based on the European Chemical Agency (ECHA) 'Guidance on requirements for substances in articles' (Version: 2, April 2011), applying the 0.1% weight on weight concentration threshold at the finished product level. TE is aware of the European Court of Justice ruling of September 10th, 2015 also known as O5A (Once An Article Always An Article) stating that, in case of 'complex object', the threshold for a SVHC must be applied to both the product as a whole and simultaneously to each of the articles forming part of its composition. TE has evaluated this ruling based on the new ECHA "Guidance on requirements for substances in articles" (June 2017, version 4.0) and will be updating its statements accordingly.

## Compatible Parts

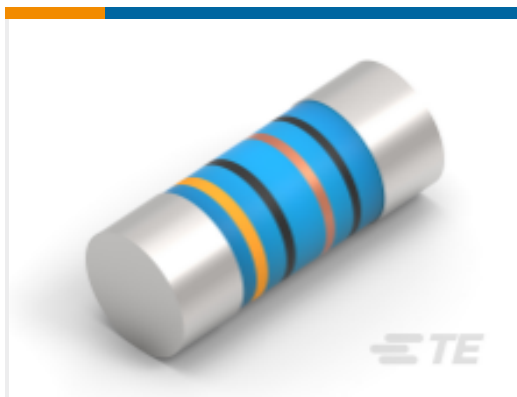


Also in the Series | [Corcom EEA](#)

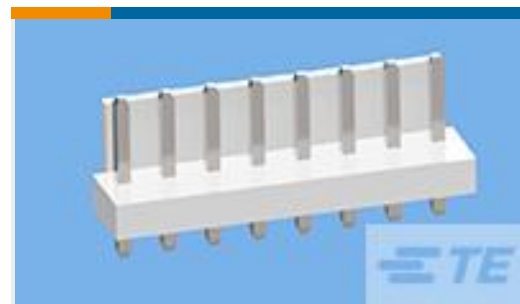


Multi-Function Inlet Filters  
(18)

## Customers Also Bought



TE Part #1-2176315-2  
MELF SMA\_A 820R 0.1%  
15PPM 0204 0.4W



TE Part #1744489-5  
3.9% EP HDR ASY 05P NO  
PEG, GW



TE Part #5-520263-2  
ULTRA-FAST 250 ASY REC  
22-18 AWG TPBR



TE Part #8-1437627-6  
G12KC=BUTTON GUARD  
KNURL CHROM



TE Part #4-641126-4  
14P MTA100 HDR ASY FL  
/STR LF



TE Part #5-2176326-3  
CRGP 0603 220K 1%



TE Part #2-2176331-8  
CRGP 2512 1K8 1%



TE Part #1-1879352-3  
RR02 5% 1R0 AMMO

## Documents

### Product Drawings

10EEA2=F7531G S0

English

### CAD Files

3D PDF

3D

Customer View Model

[ENG\\_CVM\\_CVM\\_1-6609000-1\\_B.2d\\_dxf.zip](#)

English

Customer View Model

[ENG\\_CVM\\_CVM\\_1-6609000-1\\_B.3d\\_igs.zip](#)

English

Customer View Model

[ENG\\_CVM\\_CVM\\_1-6609000-1\\_B.3d\\_stp.zip](#)

English



**Datasheets & Catalog Pages**

[1654001\\_CORCOM\\_PRODUCT\\_GUIDE\\_EEA\\_EEB](#)

English

[1654001\\_CORCOM\\_PRODUCT\\_GUIDE](#)

English

[Corcom Combined Selector Charts](#)

English