



# CRIMP RINGS & SPADES



TE CONNECTIVITY (TE)

## SOLIS R 22-16 COMM 22-18MIL 10

[SOLISTRAND](#) | [SOLISTRAND](#)

34109

TE Internal Number: 34109

Always EU RoHS/ELV Compliant

Terminal Shape **Ring Tongue**

Stud Diameter **4.82 mm [ .19 in ]**

Sealed **No**

Heavy Duty **No**

Wire Size (AWG) **22 - 16**

Active

[PRODUCT DRAWING](#)  
English

[3D PDF](#)

### Product Drawings

[TERMINAL, RING TONGUE, SOLISTRAND TM](#)

PDF  
English

### CAD Files

[Customer View Model](#)

3D\_IGS.ZIP  
English

[Customer View Model](#)

3D\_STP.ZIP  
English

[Customer View Model](#)

2D\_DXF.ZIP  
English

[3D PDF](#)

PDF  
English

### Product Environmental Compliance

TE Material Declaration

[MD\\_34109\\_11162015032\\_dmtec](#)

PDF  
English

Please review product documents or [contact us](#) for the latest agency approval information. Please Note: Use the Product Drawing for all design activity.

### Product Type Features

Sealed	<b>No</b>
Barrel Type	<b>Closed Barrel</b>
Wire/Cable Type	<b>Regular Wire</b>
Insulated	<b>No</b>
Insulated Wire Support	<b>No</b>

	Stud Size	<b>10</b>
	Shape Code	<b>RING-048</b>
	Wire/Cable Composition	<b>Solid or Stranded</b>
Configuration Features	Number of Holes	<b>1</b>
Body Features	Plating Material	<b>Copper, Tin</b>
	Plating Thickness (µin)	<b>100</b>
	Inspection Slot	<b>No</b>
Contact Features	Terminal Shape	<b>Ring Tongue</b>
	Terminal Orientation	<b>Straight</b>
Dimensions	Stud Diameter	<b>4.82 mm [ .19 in ]</b>
	Wire Size (AWG)	<b>22 – 16</b>
	Wire Size (mm <sup>2</sup> )	<b>.3 – 1.42</b>
	Wire Size (CMA)	<b>509 – 3260</b>
	Barrel Inside Diameter	<b>1.55 mm [ .061 in ]</b>
	Material Thickness	<b>.84 mm [ .033 in ]</b>
	Overall Length	<b>14.58 mm [ .574 in ]</b>
	Barrel Inside Diameter (Min)	<b>1.55 mm [ .061 in ]</b>
Usage Conditions	Operating Temperature Range (°C)	<b>170</b>
Operation/Application	Heavy Duty	<b>No</b>
Industry Standards	Government Qualified	<b>No</b>
Packaging Features	Packaging Method	<b>Loose Piece</b>
	Packaging Quantity	<b>1000</b>

Product Compliance [Statement of Compliance PDF](#)

[VIEW ALL PRODUCT COMPLIANCE](#)

CUSTOMERS ALSO BOUGHT

PCB D-SUB CONNECTORS



V23529B1223B209=SU B D  
FEDERLEI  
8-1393480-1



Save to List



Find Similar Products

MULTIPLE CONFIGURATION  
PCB HEADERS & RECEPTACLES



20P MOD2 STIFT LEI  
2-826942-0

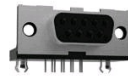


Save to List



Find Similar Products

PCB D-SUB CONNECTORS



15P.HDP20 REC.ASSY.  
3-106506-2



Save to List



Find Similar Products

MULTI-FUNCTION INLET  
FILTERS



6EGG1-2=F7386D  
6EGG1-2



Save to List



Find Similar Products

