



Product Change Notification

Current Date: 08-Oct-2018

TE Connectivity

Product Change Notification: E-18-014249

PCN Date: 27-SEP-18

Customer: TTI Electronics Asia Pte Ltd. (2771300)

Location: Singapore

Agreement: Agreement Unknown

TE would like to inform you of the following change(s) to the listed TE Connectivity Product. In case of any further questions about this change(s), please contact your TE Connectivity Sales Engineer. Affected part, drawing and/or specification numbers are listed on the attached sheet(s).

General Product Description:

RECEPTACLE HOUSING, 2 TO 12 POSITION, SINGLE ROW, MICRO MATE-L-LOK(TM)

Description of Changes

The drawings for the listed part numbers have been modified to correct following; Before: Error in material symbol representation in Zone C2 of drawing After: Corrected as per Note 5, check attached mark up

Other attachments:

[Markup drawing for drafting error change](#)

Reason for Changes:

Document Clarification. Drawing drafting error

Estimated Dates:

Last Order Date (Obsolete Parts Only):

First Date To Ship (Changed Parts Only):

Last Ship Date (Obsolete Parts Only):

Last Date for Mixed Shipments: (Changed Parts Only):

No Mixed Shipments

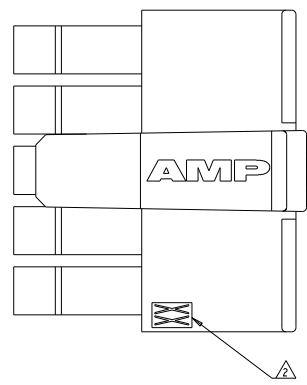
The documents listed below are being modified. Related parts that are not explicitly listed on this PCN are not being modified or discontinued as per the PCN. The Last Order Date, Last Ship Date, First Date to Ship Changed Parts and last date for Mixed Shipments apply only to parts explicitly listed on this PCN.

Note: This PCN contains only document changes, these changes do not affect the form, fit or function of the parts referenced.

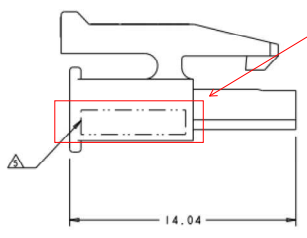
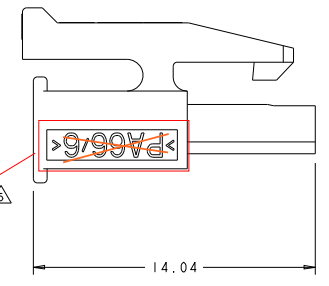
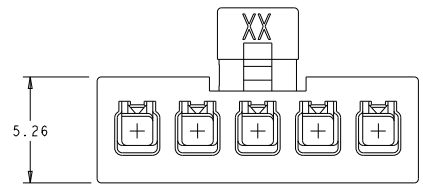
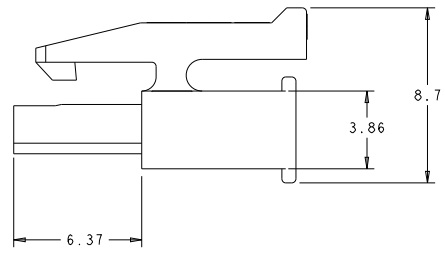
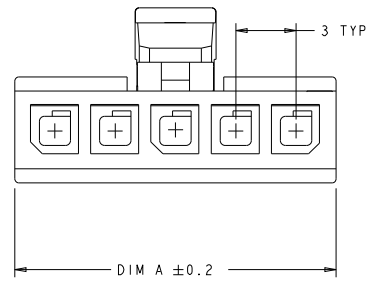
Customer Drawing(s) Being Modified:

Drawing Number	Related Part Number	Customer Part Number	Current Revision	New Revision
1445022	1445022-2		D2	

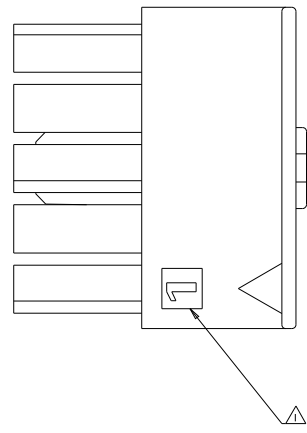
LOC	REV	DESCRIPTION	DATE	BY	APPD
CM	00				
D		REVISED PER ECO-17-000100	17MAR2017	CX	DZ
D1		REVISED PER ECR-18-004185	15MAR2018	JB	DZ
D2		REVISED PER ECR-18-011946	10SEP2018	JB	DZ
D3		REVISED PER ECR-18-014249	26SEP2018		



- △ CIRCUIT 1 IDENTIFIER, LOCATED APPROXIMATELY AS SHOWN.
- △ LAST CIRCUIT IDENTIFIER, LOCATED APPROXIMATELY AS SHOWN.
- △ MATERIAL PA66/6 UL94-V0. COLOR - BLACK
- △ PRELIMINARY MATERIAL PA66 UL94-V0 GW. COLOR - NATURAL
- △ MATERIAL ID ">PA<" LOCATED IN APPROX AREA SHOWN, APPROX 0.01 HIGH.
- △ PRELIMINARY PART NUMBER NOT RELEASED FOR PRODUCTION



**NEW VIEW
CORRECTED AS SHOWN PER NOTE 5**



REMARK	VOLUME mm ³	DIM A	NO OF POS.	PART NO.
OBSOLETE	444.06	13	4	2-1445022-4
OBSOLETE	363.34	10	3	2-1445022-3
OBSOLETE	282.61	7	2	2-1445022-2
	1091.66	37	12	1-1445022-2
	1011.3	34	11	1-1445022-1
	929.64	31	10	1-1445022-0
	847.19	28	9	1445022-9
	768.32	25	8	1445022-8
	686.23	22	7	1445022-7
	605.73	19	6	1445022-6
	525.93	16	5	1445022-5
	444.06	13	4	1445022-4
	363.34	10	3	1445022-3
	282.61	7	2	1445022-2

THIS DRAWING IS A CONTROLLED DOCUMENT. DATE: 14AUG2001. BY: M. JONES. APPD: J. JONES. PRODUCT SPEC: 108-1836. APPLICATION SPEC: 114-13000. WEIGHT: -. FINISH: -. MATERIAL: SEE TABLE. CUSTOMER DRAWING.

STE TE Connectivity
RECEPTACLE HOUSING, 2 TO 12 POSITION, SINGLE ROW, MICRO MATE-L-LOK(TM)

SCALE: 8:1 SHEET 1 OF 1