



Product Change Notification

Current Date: 27-Dec-2017

TE Connectivity

Product Change Notification: E-17-018148

PCN Date: 21-DEC-17

Customer: TTI Inc(0000139702)

Location: WORLDWIDE

Agreement: Agreement Unknown

TE would like to inform you of the following change(s) to the listed TE Connectivity Product. In case of any further questions about this change(s), please contact your TE Connectivity Sales Engineer. Affected part, drawing and/or specification numbers are listed on the attached sheet(s).

General Product Description:
Universal Mate N Lok and Universal Power housings

Description of Changes
Clarification Other attachments: Markup drawing Markup drawing Markup drawing Markup drawing Markup drawing Markup drawing

Reason for Changes:

Customer Request. Customer requests to clarify material characteristics on the note in the drawings for the part numbers (2-350777-1, 3-480699-0, 1-350865-1, 1-350866-1, 1-176271-1, 1-176271-5, 1-176282-1, 1-176282-5).

Estimated Dates:	
Last Order Date (Obsolete Parts Only):	First Date To Ship (Changed Parts Only):
Last Ship Date (Obsolete Parts Only):	Last Date for Mixed Shipments: (Changed Parts Only):
	No Mixed Shipments

The documents listed below are being modified. Related parts that are not explicitly listed on this PCN are not being modified or discontinued as per the PCN. The Last Order Date, Last Ship Date, First Date to Ship Changed Parts and last date for Mixed Shipments apply only to parts explicitly listed on this PCN.

Note: This PCN contains only document changes, these changes do not affect the form, fit or function of the parts referenced.

Customer Drawing(s) Being Modified:

Drawing Number	Related Part Number	Customer Part Number	Current Revision	New Revision
176271	176271-1	TYC176271-1	C4	
176282	176282-4, 176282-1, 1-176282-1	TYC176282-1	D4	
350777	350777-1, 1-350777-9		AD1	
350865	350865-1	TYC350865-1	R4	
350866	350866-1	TYC350866-1	P7	
480699	1-480699-0	TYC1-480699-0	AG7	

Customer: TTI Inc(1281288)

Location: Fort Worth

Agreement Number: TTI002

The documents listed below are being modified. Related parts that are not explicitly listed on this PCN are not being modified or discontinued as per the PCN. The Last Order Date, Last Ship Date, First Date to Ship Changed Parts and last date for Mixed Shipments apply only to parts explicitly listed on this PCN.

Customer Drawing(s) Being Modified:

Drawing Number	Related Part Number	Customer Part Number	Current Revision	New Revision
176282	1-176282-1		D4	
350777	350777-1		AD1	
350865	350865-1		R4	
350866	350866-1		P7	
480699	1-480699-0		AG7	

Customer: Shanghai TTI EElectronics Co Ltd(1405773)

Location: Shanghai

Agreement Number: Agreement Unknown

The documents listed below are being modified. Related parts that are not explicitly listed on this PCN are not being modified or discontinued as per the PCN. The Last Order Date, Last Ship Date, First Date to Ship Changed Parts and last date for Mixed Shipments apply only to parts explicitly listed on this PCN.

Customer Drawing(s) Being Modified:

Drawing Number	Related Part Number	Customer Part Number	Current Revision	New Revision
176271	176271-1		C4	
350777	350777-1		AD1	
350866	350866-1		P7	
480699	1-480699-0		AG7	

Customer: TTI Electronics Asia Pte Ltd.(2771300)

Location: Singapore

Agreement Number: Agreement Unknown

The documents listed below are being modified. Related parts that are not explicitly listed on this PCN are not being modified or discontinued as per the PCN. The Last Order Date, Last Ship Date, First Date to Ship Changed Parts and last date for Mixed Shipments apply only to parts explicitly listed on this PCN.

Customer Drawing(s) Being Modified:

Drawing Number	Related Part Number	Customer Part Number	Current Revision	New Revision
176271	176271-1		C4	
176282	176282-4		D4	
350777	350777-1		AD1	
350866	350866-1		P7	
480699	1-480699-0		AG7	

Customer: TTI Electronics Asia Pte Ltd.(2771300)

Location: Singapore

Agreement Number: Agreement Unknown

The documents listed below are being modified. Related parts that are not explicitly listed on this PCN are not being modified or discontinued as per the PCN. The Last Order Date, Last Ship Date, First Date to Ship Changed Parts and last date for Mixed Shipments apply only to parts explicitly listed on this PCN.

Customer Drawing(s) Being Modified:

Drawing Number	Related Part Number	Customer Part Number	Current Revision	New Revision
176271	176271-1		C4	
176282	176282-4		D4	
350777	350777-1		AD1	
350866	350866-1		P7	
480699	1-480699-0		AG7	

Customer: TTI Inc.(1305175)

Location: Maisach-Gernlinden

Agreement Number: TTI001

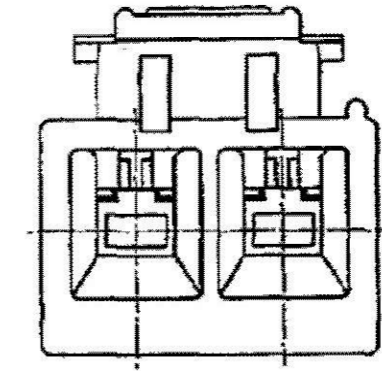
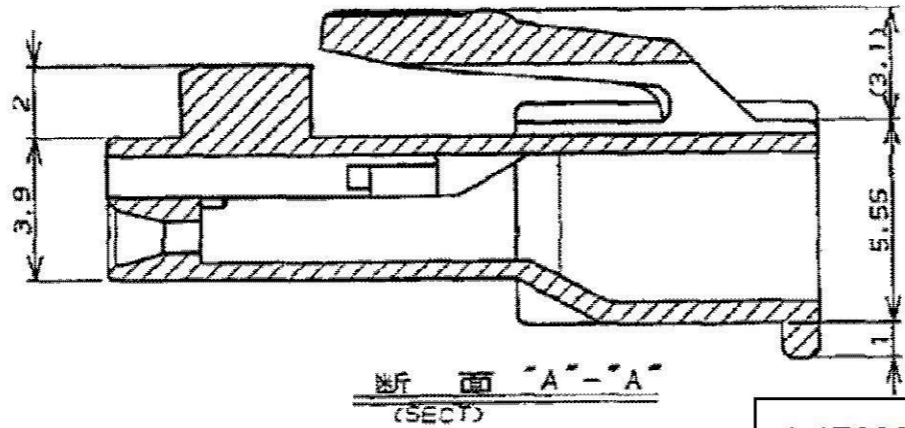
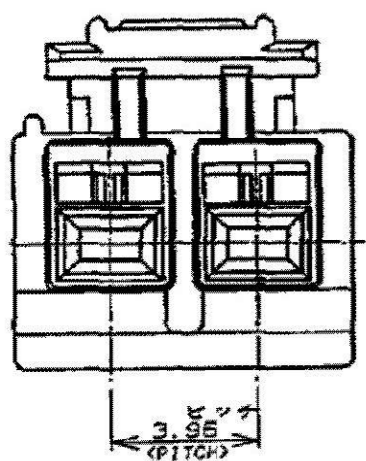
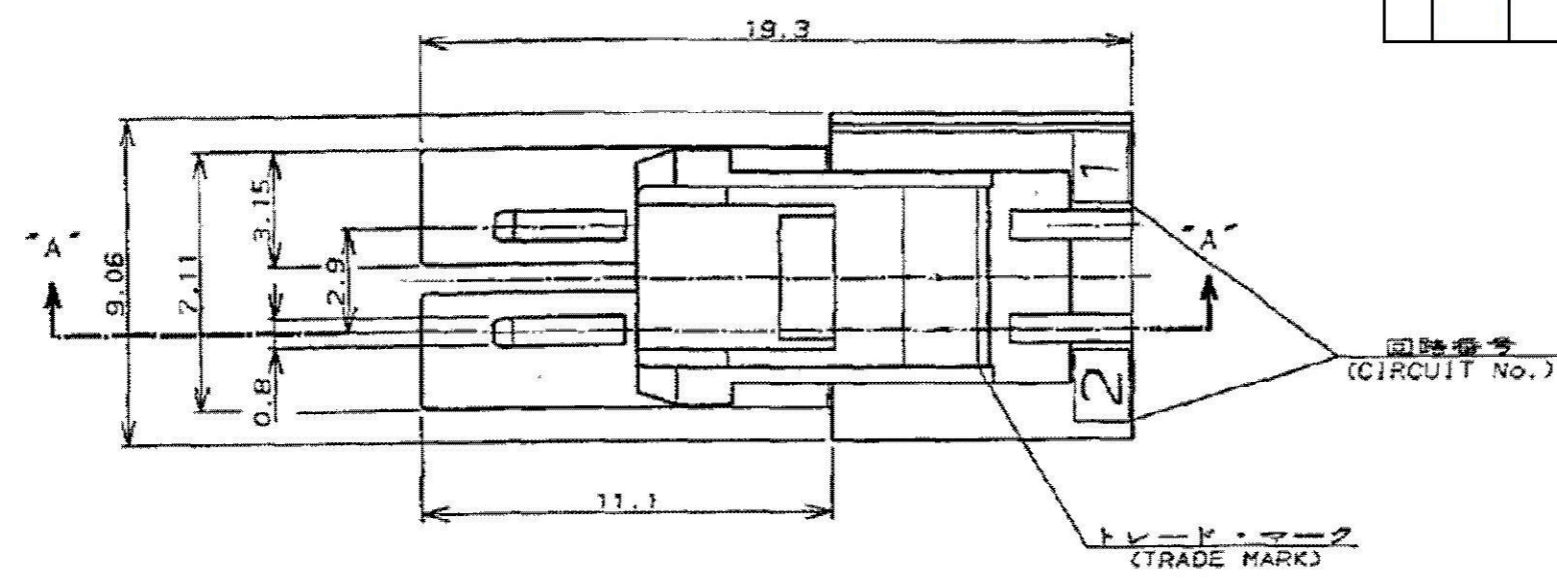
The documents listed below are being modified. Related parts that are not explicitly listed on this PCN are not being modified or discontinued as per the PCN. The Last Order Date, Last Ship Date, First Date to Ship Changed Parts and last date for Mixed Shipments apply only to parts explicitly listed on this PCN.

Customer Drawing(s) Being Modified:

Drawing Number	Related Part Number	Customer Part Number	Current Revision	New Revision
176271	176271-1	TYC176271-1	C4	
176282	176282-1	TYC176282-1	D4	
350777	1-350777-9		AD1	
350865	350865-1	TYC350865-1	R4	
350866	350866-1	TYC350866-1	P7	
480699	1-480699-0	TYC1-480699-0	AG7	

THIS DRAWING IS UNPUBLISHED. RELEASED FOR PUBLICATION
 © COPYRIGHT ALL INTERNATIONAL RIGHTS RESERVED.

LOC	DIST	REVISIONS					
J	—	P	LTR	DESCRIPTION	DATE	DWN	APVD
			C5	REVISED PER ECR-17-018148	13DEC17	SC	BH



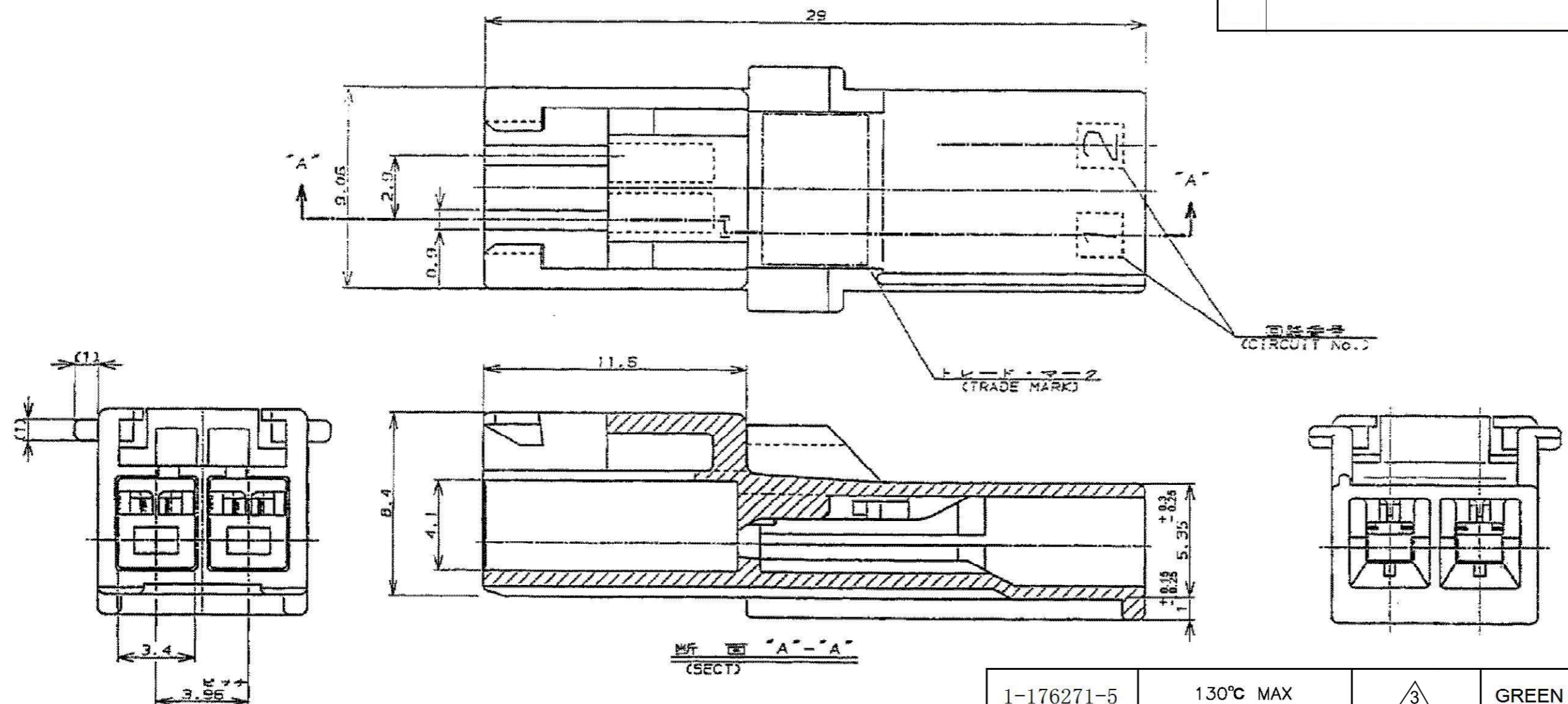
- 1. APPLICABLE CONTACT PART NUMBER;
 REC CONTACT: 175152-□ (#20-#16AWG)
 175151-□ (#26-#22AWG)
- 2. TO BE USED WITH THE CONTACT WHICH IS RATED 105°C MAX
- 3. MATERIAL: PA66, UL94 V-0, GWIT 775°C

1-176282-5	130°C MAX	△3	GREEN 绿	2	1-176271-5
1-176282-1	130°C MAX	△3	NATURAL 自然色		1-176271-1 _{△2}
176282-□ 176292-□	105°C MAX	PA66	BLACK 黒		176271-9
			BLUE 青		176271-6
			YELLOW 黄		176271-4
			RED 赤		176271-2
NATURAL 自然色	176271-1				
MATING CONN. PART NUMBER 嵌合相手型番	TEMPERATURE RATING 定格温度	TYPE 種類	HOUSING COLOR 色	Pos. 極数	PART NUMBER 型番
MATERIAL 材料					

- 1. 適用端子型番;
 リセコンタクト: 175152-□ (#20-#16AWG)
 175151-□ (#26-#22AWG)
- 2. 適用コンタクトの使用温度は最大105°C

THIS DRAWING IS A CONTROLLED DOCUMENT.

DWN M.SHINDO 08NOV1989	
CHK Y.FUJITA 08NOV1989	
APVD Y.FUJITA 08NOV1989	
PRODUCT SPEC Y.FUJITA	
108-5302	NAME
APPLICATION SPEC	AMP UNIVERSAL POWER CONN. 3.96mm PITCH PLUG HOUSING 2 Pos. (SGL ROW) AMP ユニバーサルパワーコネクタ 2極 3.96mmピッチ キャップハウジング
MATERIAL SEE TABLE	SIZE CAGE CODE DRAWING NO RESTRICTED TO
	A3 00779 C-176271
	CUSTOMER DRAWING SCALE NTS SHEET 1 OF 1 REV C5



1. APPLICABLE CONTACT PART NUMBER;
 TAB CONTACT: 175150-□ (#20-#16AWG)
 175149-□ (#26-#22AWG)

2. TO BE USED WITH THE CONTACT WHICH IS RATED 105°C MAX

3. MATERIAL: PA66, UL94 V-0, GWIT 775°C

1-176271-5	130°C MAX	3	GREEN 绿	2	1-176282-5
1-176271-1	130°C MAX	3	NATURAL 自然色		1-176282-1 2
176271-□	105°C MAX	PA66	BLACK 黒	2	176282-9
			BLUE 青		176282-6
			YELLOW 黄		176282-4
			RED 赤		176282-2
			NATURAL 自然色		176282-1
MATING CONN. PART NUMBER 嵌合相手型番	TEMPERATURE RATING 定格温度	TYPE 種類	HOUSING COLOR 色	Pos. 極数	PART NUMBER 型番

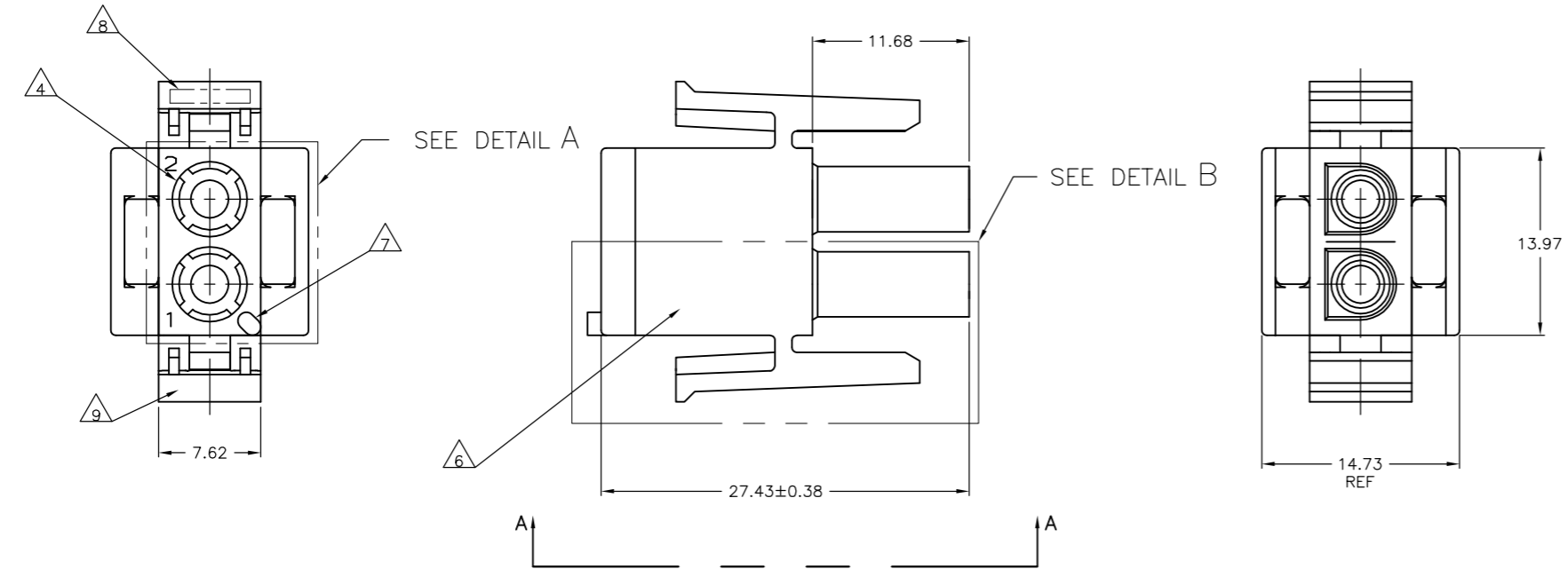
1. 適用端子型番;
 リセコンタクト: 175150-□ (#20-#16AWG)
 175149-□ (#26-#22AWG)

2. 適用コンタクトの使用温度は最大105°C

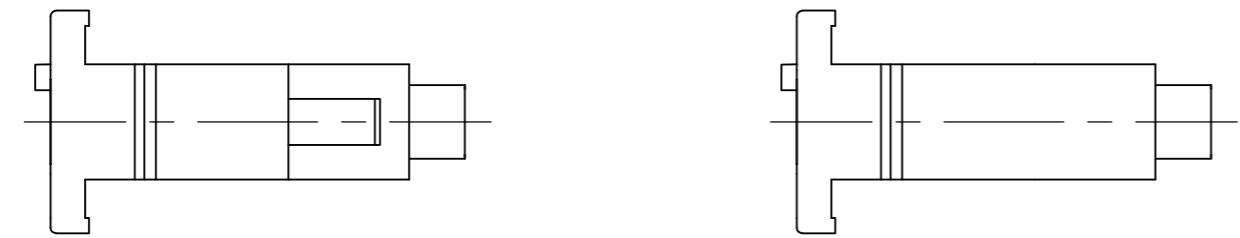
THIS DRAWING IS A CONTROLLED DOCUMENT.

DWN: Y.NARISAWA 19NOV1990	
CHK: Y.FUJITA 19NOV1990	
APVD: N.ONOUE 20NOV1990	
PRODUCT SPEC: 108-5302	
APPLICATION SPEC:	AMP UNIVERSAL POWER CONN. 3.96mm PITCH CAP HOUSING 2 Pos. (SGL ROW) AMP ユニバーサルパワーコネクタ 2極 3.96mmピッチ キャップハウジング
MATERIAL: SEE TABLE	SIZE: A3 CAGE CODE: 00779 DRAWING NO: C-176282 RESTRICTED TO: —
ANGLES FINISH: ±3°	WEIGHT: RESTRICTED CUSTOMER SCALE: NTS SHEET: 1 OF 1 REV: D5

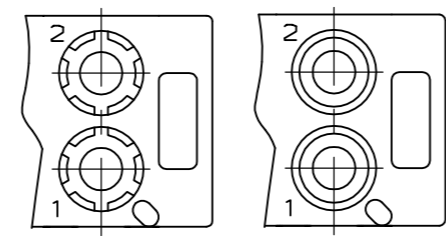
REVISIONS					
P	LTR	DESCRIPTION	DATE	OWN	APPROV
AD2		REVISED PER ECR-17-018148	13DEC2017	SC	BH



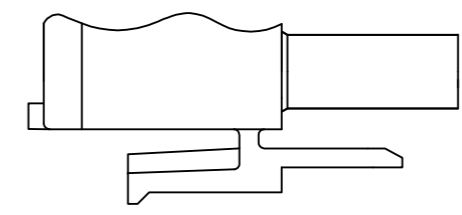
- 1 MATES WITH APPROPRIATE UNIVERSAL MATE-N-LOK™ CAP OR HEADER.
- 2 SMALL NICKS ARE PERMITTED ON THE CIRCUIT TOWERS WHICH COULD INCREASE THE INITIAL HOUSING MATING FORCE BY UP TO 4.4 NEWTONS [1.0] LBS. NO INDIVIDUAL NICKED TOWER SHALL INCREASE THIS FORCE BY OVER 2.2 NEWTONS [.5] LBS.
- 3 DIMENSIONS SHOWN REPRESENT PRODUCT IN DRY, AS MOLDED, CONDITION. ADDITIONAL 2% GROWTH DUE TO SUBSEQUENT MOISTURE ABSORPTION MAY OCCUR AND SHOULD BE ACCOUNTED FOR.
- 4 FOUR RIBS EQUALLY SPACED, NO SPECIFIC ORIENTATION, NO RIBS OR SIX RIBS EQUALLY SPACED, NO SPECIFIC ORIENTATION, OPTIONAL.
- 5 NOT MANUFACTURED IN U.S.
- 6 UNDERWRITERS RECOGNIZED COMPONENT LOGO AND CSA CERTIFICATION LOGO TO BE LOCATED ONCE ON ANY SIDE OF HOUSING.
- 7 POSITION #1 LOCATOR FEATURE MAY BE ROUND OR OBLONG (AS DEPICTED).
- 8 TRADEMARK LOCATION (AMP OR TE CONNECTIVITY) SHOWN FOR CONVENIENCE. LOGO MAY BE ON ANY EXTERNAL SURFACE.
- 9 MANUFACTURING LOCATION ID (OPTIONAL).
- 10 MATERIAL: PA66, UL94 V-0, GWIT 775°C



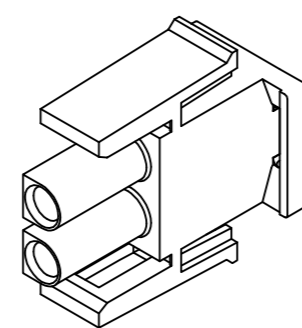
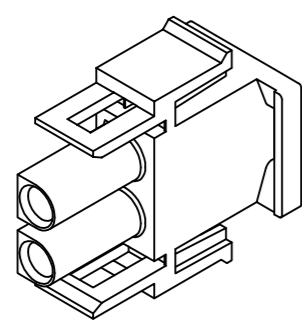
VIEW A-A
350777-4 ONLY



DETAIL A
OPTIONAL CONSTRUCTION



DETAIL B
350777-4 ONLY



△	NATURAL	2-350777-1
	BLACK	1-350777-9
	GRAY	1-350777-8
	BLUE	1-350777-6
	GREEN	1-350777-5
	YELLOW	1-350777-4
	ORANGE	1-350777-3
	RED	1-350777-2
	BROWN	1-350777-1
△		350777-4
	NATURAL	350777-1
	COLOR	PART NUMBER

MM	IN
27.43	1.080
14.73	.580
13.97	.550
11.68	.460
7.62	.300
0.38	.015
0.13	.005
MM	IN

CONVERSION TABLE

THIS DRAWING IS A CONTROLLED DOCUMENT.

DIMENSIONS:	TOLERANCES UNLESS OTHERWISE SPECIFIED:	DWG: R. VESTAL 24JAN95	CHK: R. SWING 24JAN95	NAME: PLUG, 2 CIRCUIT, UNIVERSAL MATE-N-LOK(TM)
mm	0 PLC ± - 1 PLC ± - 2 PLC ± 0.13 3 PLC ± - 4 PLC ± - ANGLES ± 0°30'	APP'D: D. SELF 24JAN95	PRODUCT SPEC: - APPLICATION SPEC: -	RESTRICTED TO: -
MATERIAL: NYLON	FINISH: -	SIZE: A1	CAGE CODE: 00779	DRAWING NO: 350777
CUSTOMER DRAWING		SCALE: 4:1	SHEET: 1 OF 1	REV: AD2

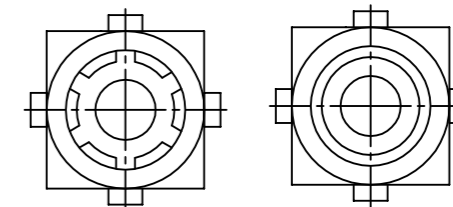
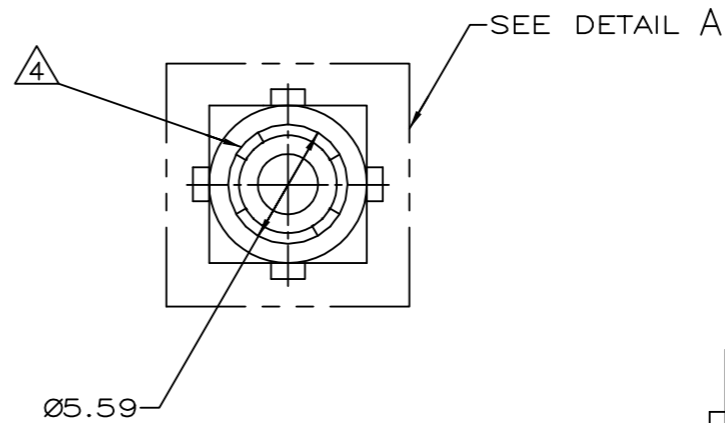
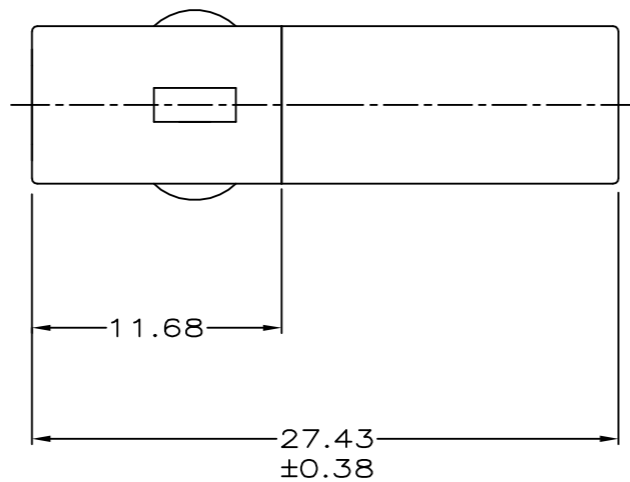
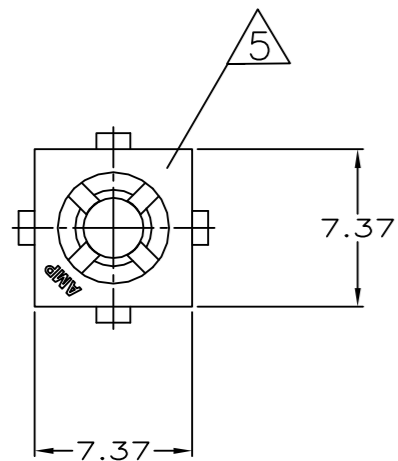
STE TE Connectivity

THIS DRAWING IS UNPUBLISHED. RELEASED FOR PUBLICATION
 © COPYRIGHT - By - ALL RIGHTS RESERVED.

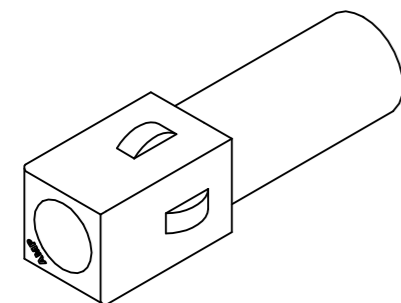
REVISIONS				
P	LTR	DESCRIPTION	DATE	APVD
R5		REVISED PER ECR-17-018148	13DEC2017	SC BH

6 MATERIAL: PA66, UL94 V-0, GWIT 775°C

- MATES WITH APPROPRIATE UNIVERSAL MATE-N-LOK™ CAP.
 - SMALL NICKS ARE PERMITTED ON THE CIRCUIT TOWER WHICH COULD INCREASE THE INITIAL HOUSING MATING FORCE BY UP TO 2.2 NEWTONS [.5 LBS].
 - DIMENSIONS SHOWN REPRESENT PRODUCT IN DRY, AS MOLDED, CONDITION. ADDITIONAL 2% GROWTH DUE TO SUBSEQUENT MOISTURE ABSORPTION MAY OCCUR AND SHOULD BE ACCOUNTED FOR.
- 4 FOUR RIBS EQUALLY SPACED, NO SPECIFIC ORIENTATION. NO RIBS OR SIX RIBS EQUALLY SPACED, NO SPECIFIC ORIENTATION, OPTIONAL.
- 5 CSA LOGO LOCATED APPROXIMATELY AS SHOWN.



DETAIL A
OPTIONAL CONSTRUCTION



3-DIMENSIONAL MODEL
NTS

MM	IN
27.43	1.080
11.68	.460
7.37	.290
5.59	.220
0.38	.015
0.13	.005

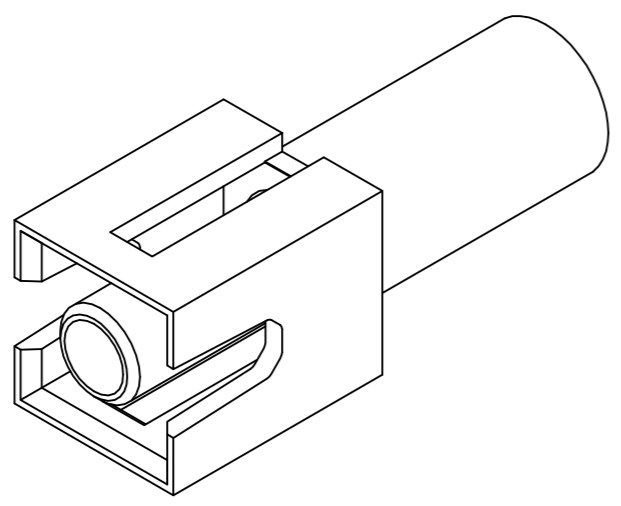
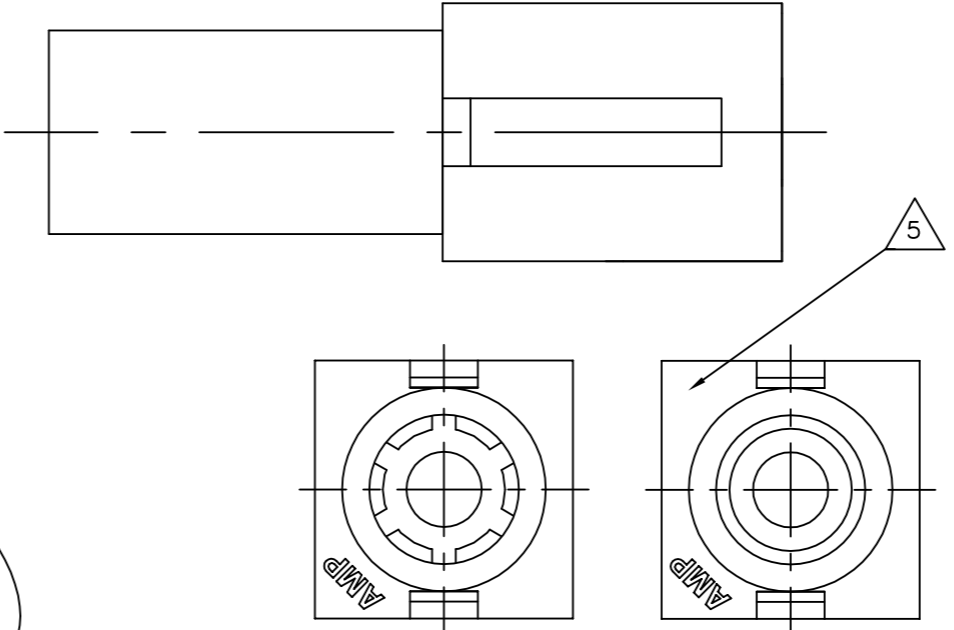
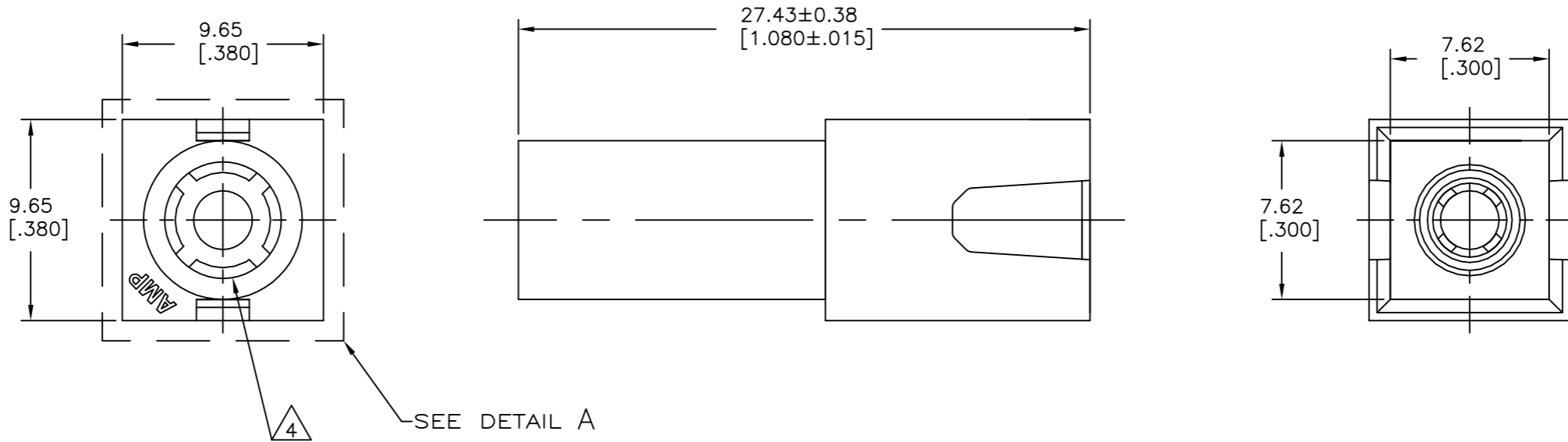
CONVERSION TABLE

6	NATURAL	1-350865-1
	NATURAL	350865-1
	COLOR	PART NO

THIS DRAWING IS A CONTROLLED DOCUMENT.		DWN K. WHITAKER 3-9-92	TE Connectivity	
DIMENSIONS: mm [INCHES]		CHK R. SWING 3-9-92	PLUG, SINGLE CIRCUIT, UNIVERSAL MATE-N-LOK™	
TOLERANCES UNLESS OTHERWISE SPECIFIED:		APVD D. SELF 3-10-92	NAME	
0 PLC	± -	PRODUCT SPEC	SIZE	
1 PLC	± -	APPLICATION SPEC	CAGE CODE	
2 PLC	± 0.13		DRAWING NO	
3 PLC	± -		RESTRICTED TO	
4 PLC	± -		A2 00779 C=350865	
ANGLES	± 0°30'		SCALE 4:1 SHEET 1 of 1 REV R5	
MATERIAL NYLON, UL 94V-0	FINISH -	WEIGHT	CUSTOMER DRAWING	

THIS DRAWING IS UNPUBLISHED. RELEASED FOR PUBLICATION
 © COPYRIGHT - By - ALL RIGHTS RESERVED.

REVISIONS					
P	LTR	DESCRIPTION	DATE	DWN	APVD
P8		REVISED PER ECR-17-018148	13DEC2017	SC	BH



3-DIMENSIONAL MODEL NTS

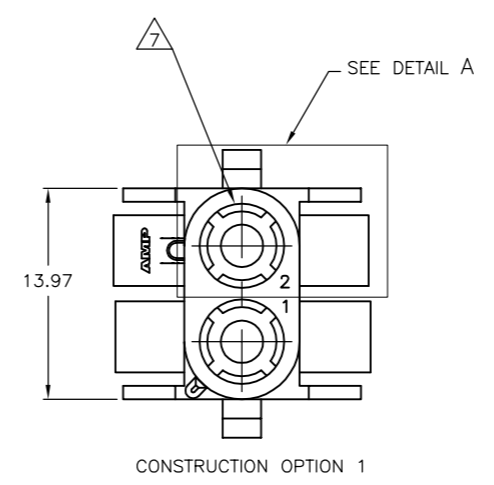
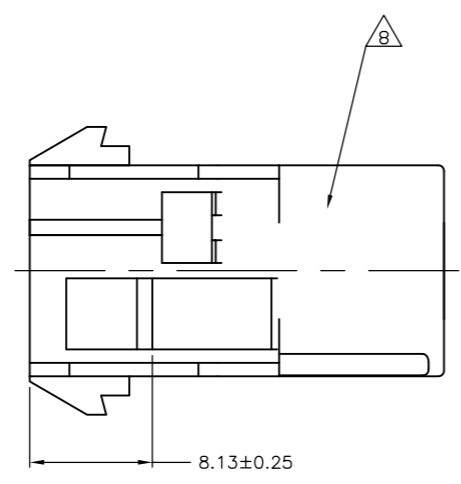
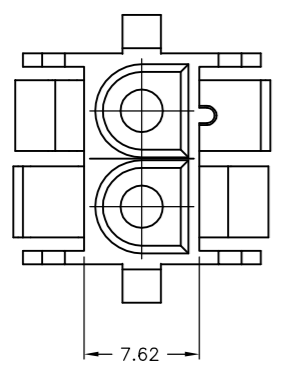
DETAIL A
OPTIONAL CONSTRUCTIONS

- 1 MATES WITH HOUSING 350865.
- 2 DIMENSIONS IN BRACKETS ARE IN INCHES.
- 3 DIMENSIONS SHOWN REPRESENT PRODUCT IN DRY, AS MOLDED, CONDITION. ADDITIONAL 2% GROWTH DUE TO SUBSEQUENT MOISTURE ABSORPTION MAY OCCUR AND SHOULD BE ACCOUNTED FOR.
- 4 FOUR RIBS EQUALLY SPACED, NO SPECIFIC ORIENTATION. NO RIBS OR SIX RIBS EQUALLY SPACED, NO SPECIFIC ORIENTATION, OPTIONAL.
- 5 CSA LOGO LOCATED APPROXIMATELY AS SHOWN
- 6 MATERIAL: PA66, UL94 V-0, GWIT 775°C

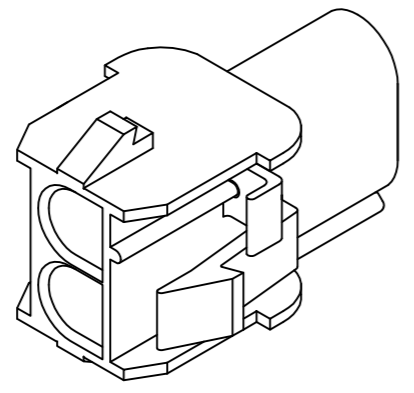
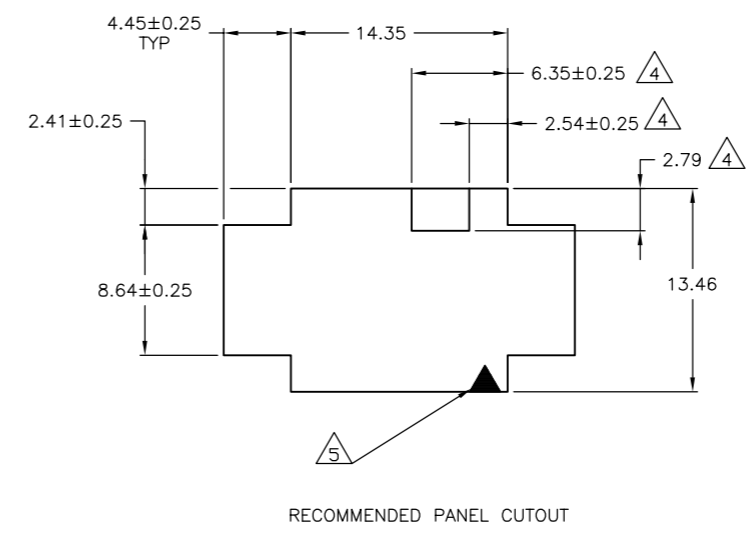
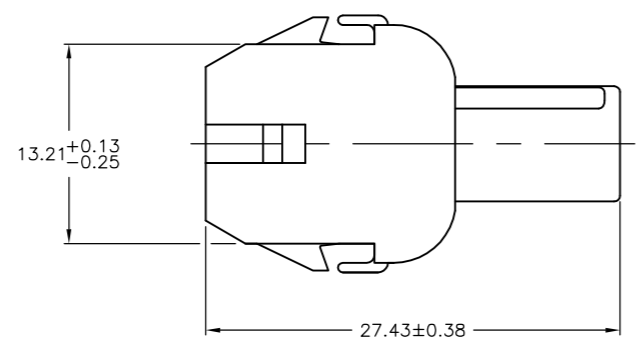
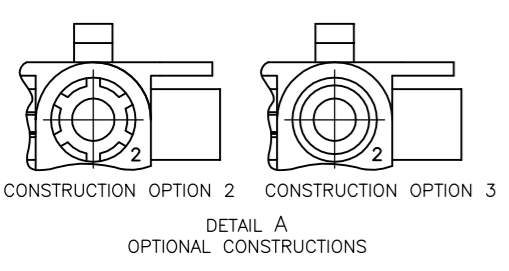
6	NATURAL	1-350866-1
	RED	350866-2
	NATURAL	350866-1
	COLOR	PART NO.

THIS DRAWING IS A CONTROLLED DOCUMENT.		DWN K. WHITAKER 8-12-91		
DIMENSIONS: mm [INCHES]		CHK R. SWING 8-12-91		
TOLERANCES UNLESS OTHERWISE SPECIFIED:		APVD D. SELF 8-12-91	NAME	
0 PLC	± -	PRODUCT SPEC	CAP, SINGLE CIRCUIT, UNIVERSAL MATE-N-LOK TM	
1 PLC	± -	APPLICATION SPEC	SIZE	CAGE CODE
2 PLC	± 0.13 [.005]		A2	00779
3 PLC	± -		DRAWING NO	
4 PLC	± -		C=350866	
ANGLES	± -		RESTRICTED TO	
FINISH	-	WEIGHT	-	
MATERIAL NYLON, UL94 V-0		CUSTOMER DRAWING	SCALE	SHEET
			5:1	1 of 1
			REV	P8

REVISIONS				
P	LTR	DESCRIPTION	DATE	DWN
AG8		REVISED ECR-17-018148	13DEC2017	SC BH



1. MATES WITH APPROPRIATE UNIVERSAL MATE-N-LOK™ PLUG.
2. RECOMMENDED PANEL THICKNESS 0.76 - 2.29.
3. PANEL MUST BE PUNCHED SO THAT THE HOUSING ENTERS THE PANEL IN THE SAME DIRECTION AS THE PUNCH.
4. OPTIONAL FOR KEYING HOUSING IN PANEL.
5. CIRCUIT NUMBER 1 LOCATION.
6. DIMENSIONS SHOWN REPRESENT PRODUCT IN DRY, AS MOLDED, CONDITION. ADDITIONAL 2% GROWTH DUE TO SUBSEQUENT MOISTURE ABSORPTION MAY OCCUR AND SHOULD BE ACCOUNTED FOR.
7. FOUR RIBS EQUALLY SPACED, NO SPECIFIC ORIENTATION. NO RIBS OR SIX RIBS EQUALLY SPACED, NO SPECIFIC ORIENTATION, OPTIONAL.
8. UNDERWRITERS RECOGNIZED COMPONENT LOGO AND CSA CERTIFICATION LOGO TO BE LOCATED ONCE EACH ON SIDE OF HOUSING.
9. OBSOLETE PARTS: OBSOLETE CIS STREAMLINING PER D.RENAUD/D.SINISI
10. CONSTRUCTION OPTION 1 ONLY ALLOWED CONSTRUCTION OPTIONS 2 AND 3 NOT PERMISSIBLE
11. PREPRODUCTION- FASR REQUIRED
12. MATERIAL: PA66, UL94 V-0, GWIT 775°C



MM	IN	MM	IN
4.45	.175	27.43	1.080
2.79	.110	14.35	.565
2.54	.100	13.97	.550
2.41	.095	13.46	.530
2.29	.090	13.21	.520
0.76	.030	8.64	.340
0.38	.015	8.13	.320
0.25	.010	7.62	.300
0.13	.005	6.35	.250
MM	IN	MM	IN

Color	Part No.
NATURAL	3-480699-0
NATURAL	2-480699-0
BLACK	1-480699-9
GREY	1-480699-8
BLUE	1-480699-6
GREEN	1-480699-5
YELLOW	1-480699-4
ORANGE	1-480699-3
RED	1-480699-2
BROWN	1-480699-1
NATURAL	1-480699-0
COLOR	PART NO.

9. SUPERSEDED BY 1-480699-0
 9. OBSOLETE

THIS DRAWING IS A CONTROLLED DOCUMENT.

DW: K. WHITAKER 24JUL92
 CHK: R. SWING 24JUL92
 AP/CD: D. SELF 27JUL92

TE Connectivity

CAP.2 CIRCUIT, UNIVERSAL MATE-N-LOK (TM)

SIZE: A1 CAGE CODE: 00779 DRAWING NO: 480699

SCALE: 4:1 SHEET: 1 OF 1 REV: AG8