



# Product Change Notification

Current Date: 12-Dec-2017

## TE Connectivity

**Product Change Notification:** E-17-016522

**PCN Date:** 05-DEC-17

**Customer:** TTI Inc(0000139702)

**Location:** WORLDWIDE

**Agreement:** Agreement Unknown

TE would like to inform you of the following change(s) to the listed TE Connectivity Product. In case of any further questions about this change(s), please contact your TE Connectivity Sales Engineer. Affected part, drawing and/or specification numbers are listed on the attached sheet(s).

<b>General Product Description:</b>
Universal Mate-N-Lok Housings

<b>Description of Changes</b>
There have been no changes to the existing parts, the drawings have been modified to show a new product offering.
<b>Other attachments:</b>
<a href="#">Markup drawing for 480699</a>
<a href="#">Markup drawing for 350866</a>
<a href="#">Markup drawing for 350777</a>
<a href="#">Markup drawing for 350865</a>

<b>Reason for Changes:</b>
Customer Request. A part meets with GWIT 775 degree C compliant.
<b>Estimated Dates:</b>

<b>Last Order Date</b> (Obsolete Parts Only):	<b>First Date To Ship</b> (Changed Parts Only):
<b>Last Ship Date</b> (Obsolete Parts Only):	<b>Last Date for Mixed Shipments:</b> (Changed Parts Only):
	No Mixed Shipments

The documents listed below are being modified. Related parts that are not explicitly listed on this PCN are not being modified or discontinued as per the PCN. The Last Order Date, Last Ship Date, First Date to Ship Changed Parts and last date for Mixed Shipments apply only to parts explicitly listed on this PCN.

**Note: This PCN contains only document changes, these changes do not affect the form, fit or function of the parts referenced.**

**Customer Drawing(s) Being Modified:**

Drawing Number	Related Part Number	Customer Part Number	Current Revision	New Revision
<a href="#">350777</a>	350777-1		AD	
<a href="#">350865</a>	350865-1		R3	
<a href="#">350866</a>	350866-1		P5	
<a href="#">480699</a>	1-480699-0		AG6	

**Customer:** TTI Inc( 1281288 )

**Location:** Fort Worth

**Agreement Number:** TTI002

The documents listed below are being modified. Related parts that are not explicitly listed on this PCN are not being modified or discontinued as per the PCN. The Last Order Date, Last Ship Date, First Date to Ship Changed Parts and last date for Mixed Shipments apply only to parts explicitly listed on this PCN.

**Customer Drawing(s) Being Modified:**

Drawing Number	Related Part Number	Customer Part Number	Current Revision	New Revision
<a href="#">350777</a>	350777-1		AD	
<a href="#">350865</a>	350865-1		R3	

<a href="#">350866</a>	350866-1		P5	
<a href="#">480699</a>	1-480699-0		AG6	

**Customer:** Shanghai TTI Electronics Co Ltd( 1405773 )

**Location:** Shanghai

**Agreement Number:** Agreement Unknown

The documents listed below are being modified. Related parts that are not explicitly listed on this PCN are not being modified or discontinued as per the PCN. The Last Order Date, Last Ship Date, First Date to Ship Changed Parts and last date for Mixed Shipments apply only to parts explicitly listed on this PCN.

**Customer Drawing(s) Being Modified:**

Drawing Number	Related Part Number	Customer Part Number	Current Revision	New Revision
<a href="#">350777</a>	350777-1		AD	
<a href="#">350866</a>	350866-1		P5	
<a href="#">480699</a>	1-480699-0		AG6	

**Customer:** TTI Electronics Asia Pte Ltd.( 2771300 )

**Location:** Singapore

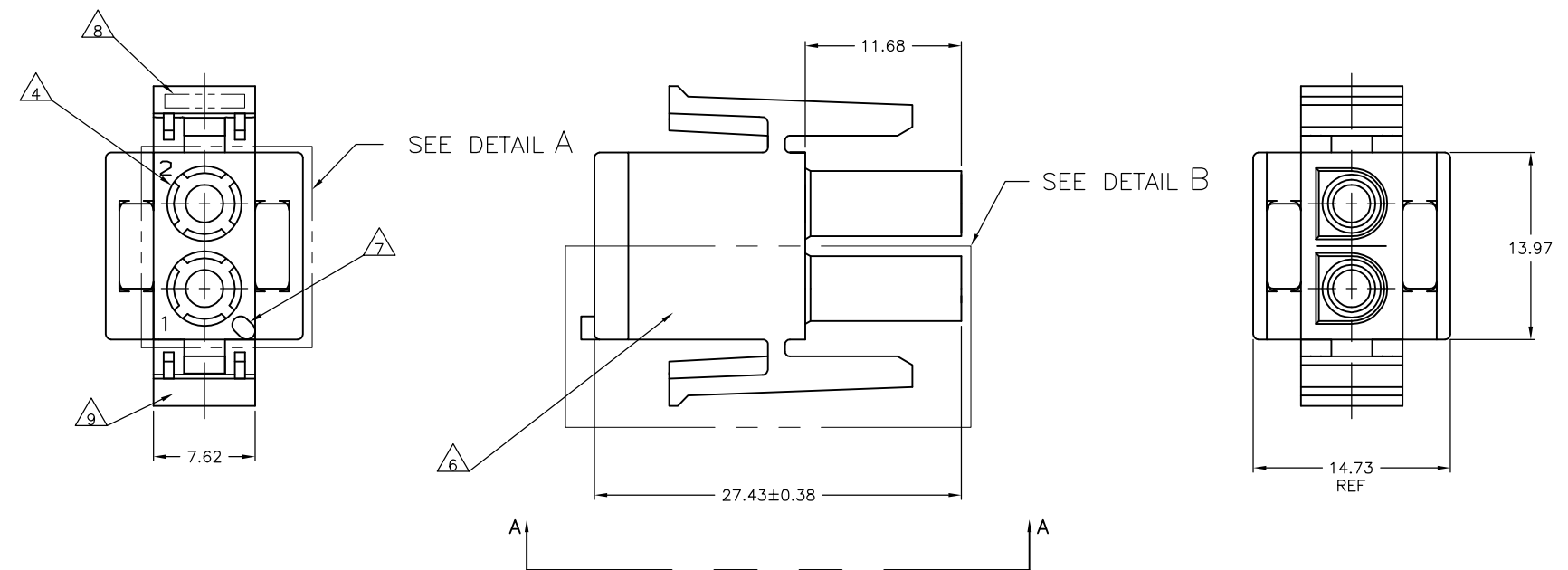
**Agreement Number:** Agreement Unknown

The documents listed below are being modified. Related parts that are not explicitly listed on this PCN are not being modified or discontinued as per the PCN. The Last Order Date, Last Ship Date, First Date to Ship Changed Parts and last date for Mixed Shipments apply only to parts explicitly listed on this PCN.

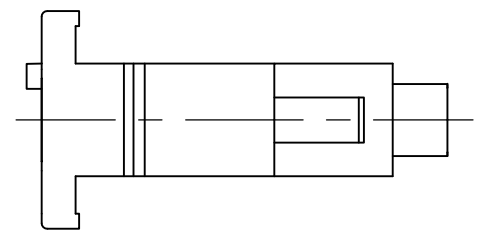
**Customer Drawing(s) Being Modified:**

Drawing Number	Related Part Number	Customer Part Number	Current Revision	New Revision
<a href="#">350777</a>	350777-1		AD	
<a href="#">350866</a>	350866-1		P5	
<a href="#">480699</a>	1-480699-0		AG6	

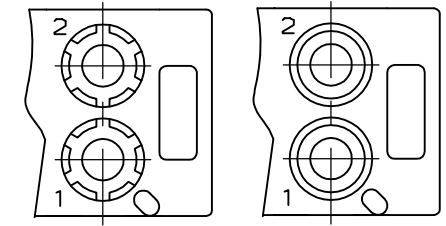
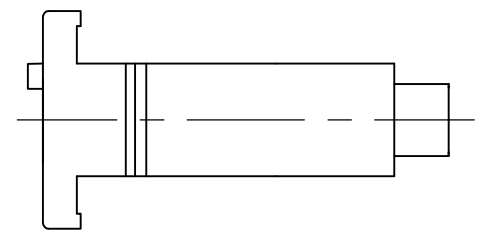
REVISIONS					
#	LTR	DESCRIPTION	DATE	DWN	APP'D
AD1		REVISED PER ECR-17-016522	09NOV2017	SC	BH



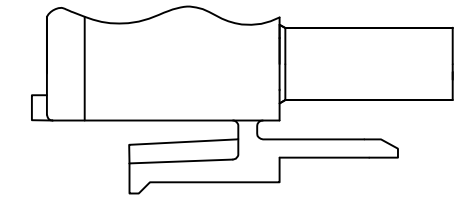
- MATES WITH APPROPRIATE UNIVERSAL MATE-N-LOK™ CAP OR HEADER.
  - SMALL NICKS ARE PERMITTED ON THE CIRCUIT TOWERS WHICH COULD INCREASE THE INITIAL HOUSING MATING FORCE BY UP TO 4.4 NEWTONS [1.0] LBS. NO INDIVIDUAL NICKED TOWER SHALL INCREASE THIS FORCE BY OVER 2.2 NEWTONS [.5] LBS.
  - DIMENSIONS SHOWN REPRESENT PRODUCT IN DRY, AS MOLDED, CONDITION. ADDITIONAL 2% GROWTH DUE TO SUBSEQUENT MOISTURE ABSORPTION MAY OCCUR AND SHOULD BE ACCOUNTED FOR.
- △4 FOUR RIBS EQUALLY SPACED, NO SPECIFIC ORIENTATION, NO RIBS OR SIX RIBS EQUALLY SPACED, NO SPECIFIC ORIENTATION, OPTIONAL.
  - △5 NOT MANUFACTURED IN U.S.
  - △6 UNDERWRITERS RECOGNIZED COMPONENT LOGO AND CSA CERTIFICATION LOGO TO BE LOCATED ONCE ON ANY SIDE OF HOUSING.
  - △7 POSITION #1 LOCATOR FEATURE MAY BE ROUND OR OBLONG (AS DEPICTED).
  - △8 TRADEMARK LOCATION (AMP OR TE CONNECTIVITY) SHOWN FOR CONVENIENCE, LOGO MAY BE ON ANY EXTERNAL SURFACE.
  - △9 MANUFACTURING LOCATION ID (OPTIONAL).
  - △10 MATERIAL: UL94 V-0, GWIT 775°C



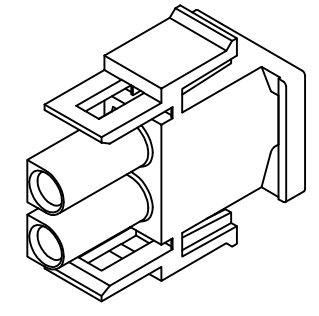
VIEW A-A  
350777-4 ONLY



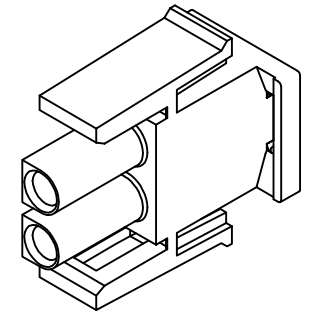
DETAIL A  
OPTIONAL CONSTRUCTION



DETAIL B  
350777-4 ONLY



350777-4 3-DIMENSIONAL MODEL  
NTS



3-DIMENSIONAL MODEL  
NTS

MM	IN
27.43	1.080
14.73	.580
13.97	.550
11.68	.460
7.62	.300
0.38	.015
0.13	.005
MM	IN

CONVERSION TABLE

△	COLOR	PART NUMBER
△	NATURAL	2-350777-1
	BLACK	1-350777-9
	GRAY	1-350777-8
	BLUE	1-350777-6
	GREEN	1-350777-5
	YELLOW	1-350777-4
	ORANGE	1-350777-3
	RED	1-350777-2
	BROWN	1-350777-1
	△	350777-4
	NATURAL	350777-1
	COLOR	PART NUMBER

THIS DRAWING IS A CONTROLLED DOCUMENT.

DIMENSIONS:	TOLERANCES UNLESS OTHERWISE SPECIFIED:	DWN	24JAN95
mm	0 PLC ± -	R. VESTAL	
	1 PLC ± -	CHK	24JAN95
	2 PLC ± 0.13	R. SWING	
	3 PLC ± -	APVD	24JAN95
	4 PLC ± -	D. SELF	
	ANGLES ± 0°30'	NAME	
MATERIAL	FINISH	PRODUCT SPEC	
NYLON	-	APPLICATION SPEC	
		WEIGHT	
		SIZE	A1
		CAGE CODE	00779
		DRAWING NO	350777
		RESTRICTED TO	
		CUSTOMER DRAWING	
		SCALE	4:1
		SHEET	1 of 1
		REV	AD1

STE TE Connectivity

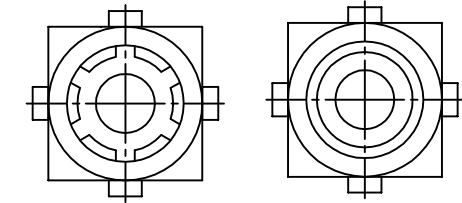
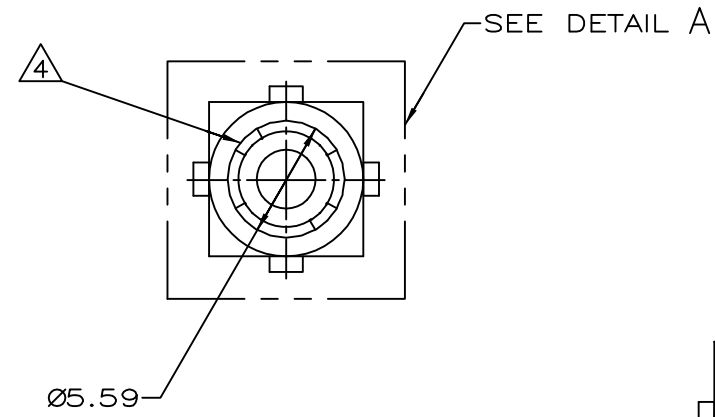
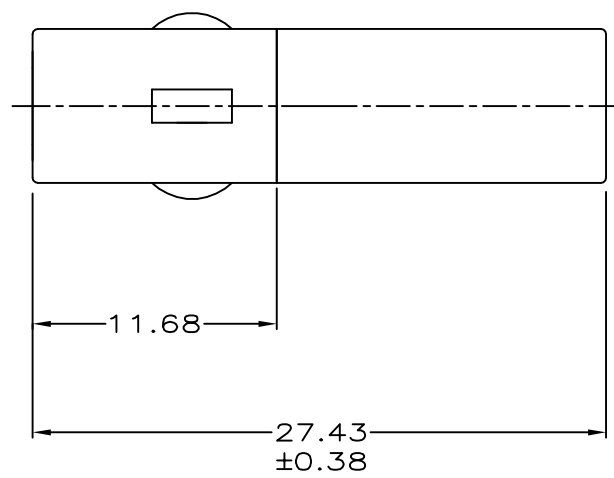
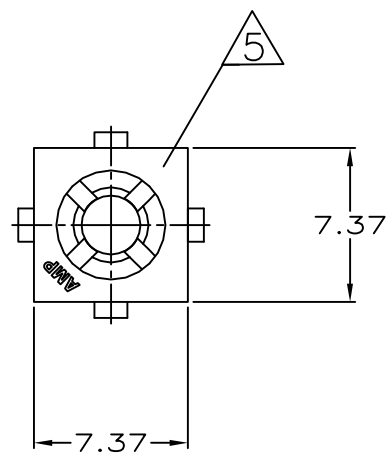
PLUG,  
2 CIRCUIT,  
UNIVERSAL MATE-N-LOK(TM)

THIS DRAWING IS UNPUBLISHED. RELEASED FOR PUBLICATION  
 © COPYRIGHT - By - ALL RIGHTS RESERVED.

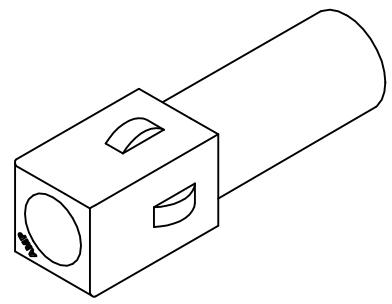
REVISIONS				
P	LTR	DESCRIPTION	DATE	APVD
R4		REVISED PER ECR-17-016522	09NOV2017	SC BH

**6** MATERIAL: GWIT 775°C

- MATES WITH APPROPRIATE UNIVERSAL MATE-N-LOK™ CAP.
  - SMALL NICKS ARE PERMITTED ON THE CIRCUIT TOWER WHICH COULD INCREASE THE INITIAL HOUSING MATING FORCE BY UP TO 2.2 NEWTONS [.5 LBS].
  - DIMENSIONS SHOWN REPRESENT PRODUCT IN DRY, AS MOLDED, CONDITION. ADDITIONAL 2% GROWTH DUE TO SUBSEQUENT MOISTURE ABSORPTION MAY OCCUR AND SHOULD BE ACCOUNTED FOR.
- 4** FOUR RIBS EQUALLY SPACED, NO SPECIFIC ORIENTATION. NO RIBS OR SIX RIBS EQUALLY SPACED, NO SPECIFIC ORIENTATION, OPTIONAL.
- 5** CSA LOGO LOCATED APPROXIMATELY AS SHOWN.



DETAIL A  
OPTIONAL CONSTRUCTION



3-DIMENSIONAL MODEL NTS

MM	IN
27.43	1.080
11.68	.460
7.37	.290
5.59	.220
0.38	.015
0.13	.005

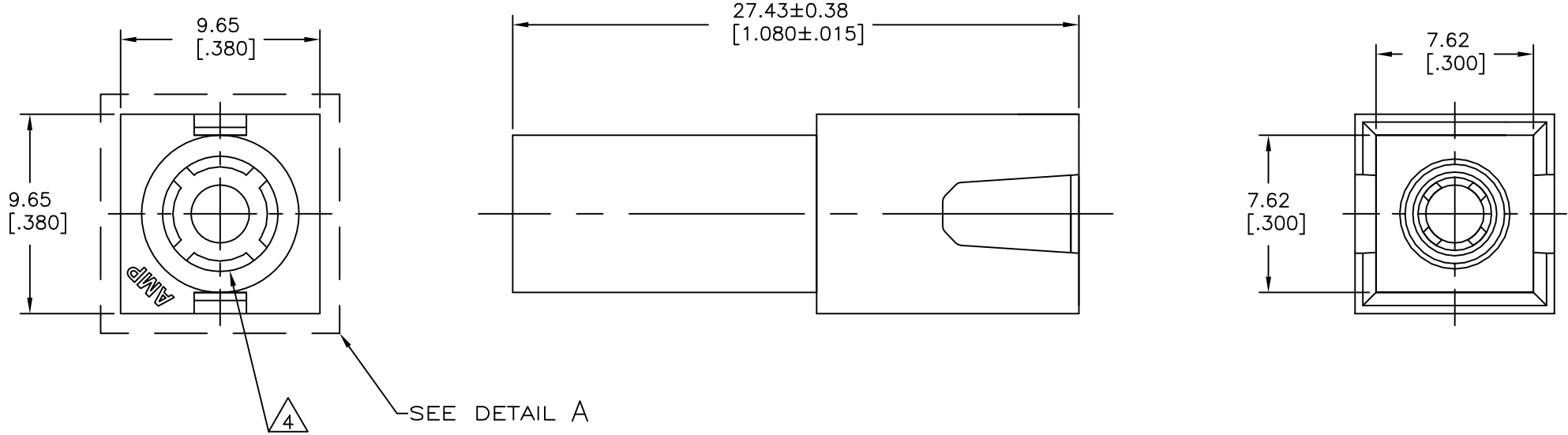
CONVERSION TABLE

<b>6</b>	NATURAL	1-350865-1
	NATURAL	350865-1
	COLOR	PART NO

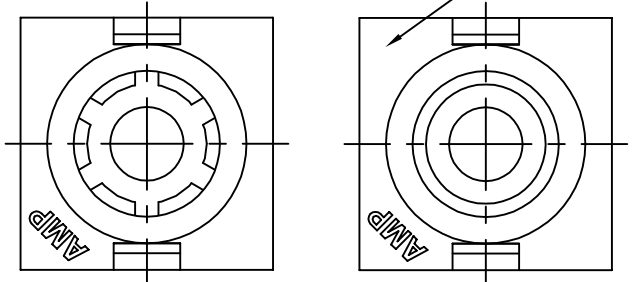
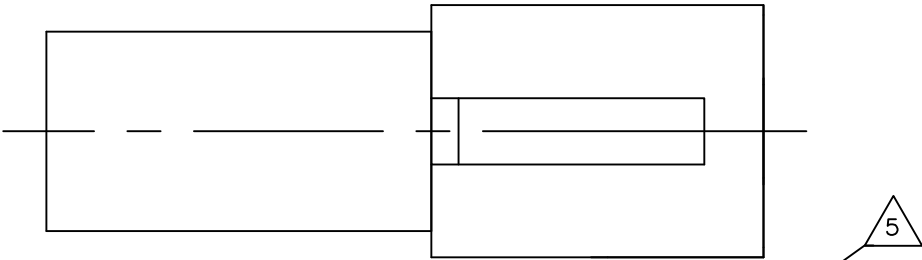
THIS DRAWING IS A CONTROLLED DOCUMENT.		DWN K. WHITAKER 3-9-92	TE Connectivity	
DIMENSIONS: mm[INCHES]		CHK R. SWING 3-9-92		
TOLERANCES UNLESS OTHERWISE SPECIFIED:		APVD D. SELF 3-10-92	NAME	
0 PLC ± - 1 PLC ± - 2 PLC ± 0.13 3 PLC ± - 4 PLC ± - ANGLES ± 0°30' FINISH -		PRODUCT SPEC	PLUG, SINGLE CIRCUIT, UNIVERSAL MATE-N-LOK™	
MATERIAL NYLON,UL 94V-0		APPLICATION SPEC	SIZE A2	RESTRICTED TO
		WEIGHT	CAGE CODE 00779	DRAWING NO C=350865
		CUSTOMER DRAWING	SCALE 4:1	SHEET 1 of 1
			REV R4	

THIS DRAWING IS UNPUBLISHED. RELEASED FOR PUBLICATION  
 © COPYRIGHT - By - ALL RIGHTS RESERVED.

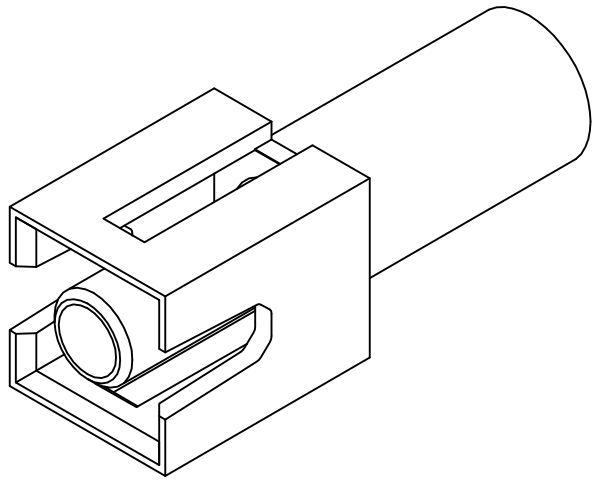
REVISIONS				
P	LTR	DESCRIPTION	DATE	APVD
P7		REVISED PER ECR-17-016522	09NOV2017	SC BH



SEE DETAIL A



DETAIL A  
OPTIONAL CONSTRUCTIONS



3-DIMENSIONAL MODEL  
NTS

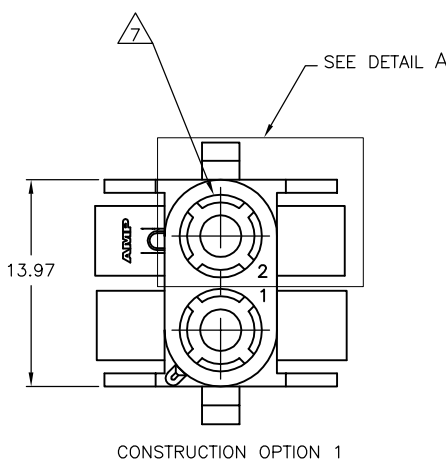
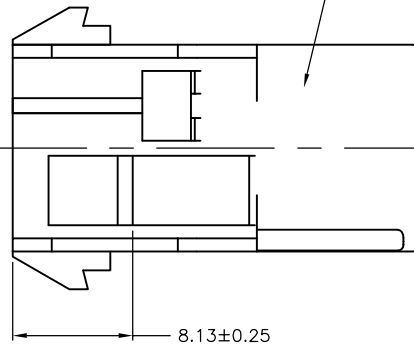
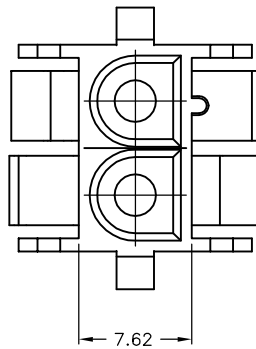
- 1 MATES WITH HOUSING 350865.
- 2 DIMENSIONS IN BRACKETS ARE IN INCHES.
- 3 DIMENSIONS SHOWN REPRESENT PRODUCT IN DRY, AS MOLDED, CONDITION. ADDITIONAL 2% GROWTH DUE TO SUBSEQUENT MOISTURE ABSORPTION MAY OCCUR AND SHOULD BE ACCOUNTED FOR.
- △4 FOUR RIBS EQUALLY SPACED, NO SPECIFIC ORIENTATION. NO RIBS OR SIX RIBS EQUALLY SPACED, NO SPECIFIC ORIENTATION, OPTIONAL.
- △5 CSA LOGO LOCATED APPROXIMATELY AS SHOWN
- △6 MATERIAL: GWIT 775°C

△6	NATURAL	1-350866-1
	RED	350866-2
	NATURAL	350866-1
	COLOR	PART NO.

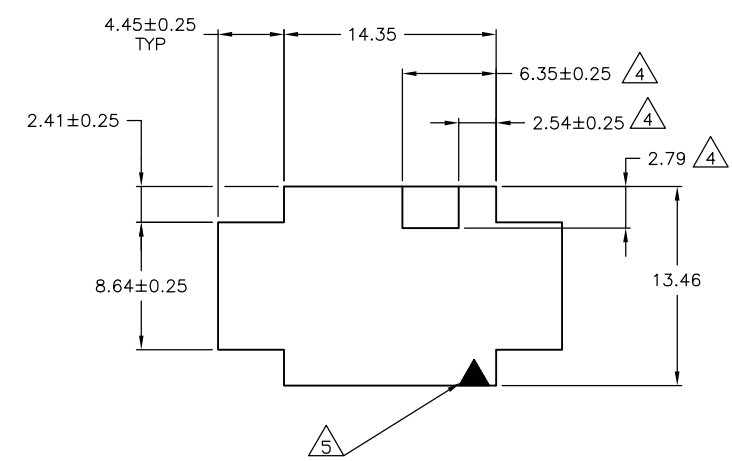
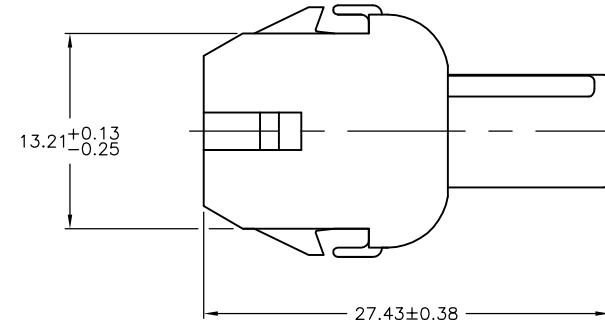
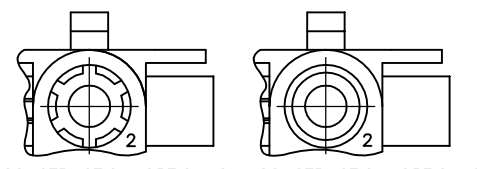
THIS DRAWING IS A CONTROLLED DOCUMENT.		DWN K. WHITAKER 8-12-91		
DIMENSIONS: mm [INCHES]		CHK R. SWING 8-12-91		
TOLERANCES UNLESS OTHERWISE SPECIFIED:		APVD D. SELF 8-12-91	NAME	
0 PLC ± -	1 PLC ± -	PRODUCT SPEC	CAP, SINGLE CIRCUIT, UNIVERSAL MATE-N-LOK TM	
2 PLC ± 0.13 [.005]	3 PLC ± -	APPLICATION SPEC	SIZE	CAGE CODE
4 PLC ± -	ANGLES ± -	WEIGHT	A2	00779
MATERIAL NYLON, UL 94V-0	FINISH -	CUSTOMER DRAWING	DRAWING NO C=350866	RESTRICTED TO -
			SCALE	SHEET
			5:1	1 of 1
			REV	P7

THIS DRAWING IS UNPUBLISHED. RELEASED FOR PUBLICATION. ALL RIGHTS RESERVED.

REVISIONS				
REV	DATE	BY	APP'D	DESCRIPTION
AG7	09NOV2017	SC	BH	REVISED PER ECR-17-016522

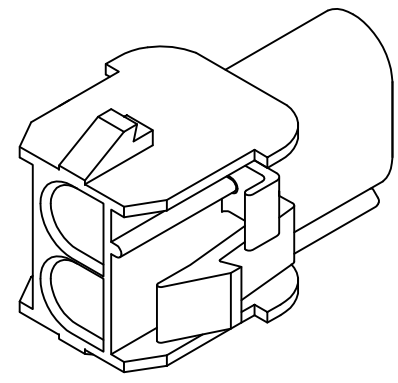


1. MATES WITH APPROPRIATE UNIVERSAL MATE-N-LOK™ PLUG.
2. RECOMMENDED PANEL THICKNESS 0.76 - 2.29.
3. PANEL MUST BE PUNCHED SO THAT THE HOUSING ENTERS THE PANEL IN THE SAME DIRECTION AS THE PUNCH.
4. OPTIONAL FOR KEYING HOUSING IN PANEL.
5. CIRCUIT NUMBER 1 LOCATION.
6. DIMENSIONS SHOWN REPRESENT PRODUCT IN DRY, AS MOLDED, CONDITION. ADDITIONAL 2% GROWTH DUE TO SUBSEQUENT MOISTURE ABSORPTION MAY OCCUR AND SHOULD BE ACCOUNTED FOR.
7. FOUR RIBS EQUALLY SPACED, NO SPECIFIC ORIENTATION. NO RIBS OR SIX RIBS EQUALLY SPACED, NO SPECIFIC ORIENTATION, OPTIONAL.
8. UNDERWRITERS RECOGNIZED COMPONENT LOGO AND CSA CERTIFICATION LOGO TO BE LOCATED ONCE EACH ON SIDE OF HOUSING.
9. OBSOLETE PARTS: OBSOLETE CIS STREAMLINING PER D.RENAUD/D.SINISI
10. CONSTRUCTION OPTION 1 ONLY ALLOWED CONSTRUCTION OPTIONS 2 AND 3 NOT PERMISSIBLE
11. PREPRODUCTION- FASR REQUIRED
12. MATERIAL: UL94 V-0, GWIT 775°C



CONSTRUCTION OPTION 2 CONSTRUCTION OPTION 3  
DETAIL A  
OPTIONAL CONSTRUCTIONS

RECOMMENDED PANEL CUTOUT



3-DIMENSIONAL MODEL NTS

MM	IN	MM	IN
4.45	.175	27.43	1.080
2.79	.110	14.35	.565
2.54	.100	13.97	.550
2.41	.095	13.46	.530
2.29	.090	13.21	.520
0.76	.030	8.64	.340
0.38	.015	8.13	.320
0.25	.010	7.62	.300
0.13	.005	6.35	.250
MM	IN	MM	IN

CONVERSION TABLE

REV	DESCRIPTION	DATE	BY	APP'D
12	NATURAL			3-480699-0
10	NATURAL			2-480699-0
	BLACK			1-480699-9
	GREY			1-480699-8
	BLUE			1-480699-6
	GREEN			1-480699-5
	YELLOW			1-480699-4
	ORANGE			1-480699-3
	RED			1-480699-2
	BROWN			1-480699-1
	NATURAL			1-480699-0
	COLOR			PART NO.

9. SUPERSEDED BY 1-480699-0

10. OBSOLETE

THIS DRAWING IS A CONTROLLED DOCUMENT.

DW	K. WHITAKER	24JUL92
CHK	R. SWING	24JUL92
APVD	D. SELF	27JUL92

TE Connectivity

CAP.2 CIRCUIT, UNIVERSAL MATE-N-LOK (TM)

MATERIAL: NYLON,UL 94V-2

FINISH: -

WEIGHT: -

SIZE: A1

CAGE CODE: 00779

DRAWING NO: 480699

RESTRICTED TO: -

CUSTOMER DRAWING

SCALE: 4:1

SHEET: 1 of 1

REV: AG7