

My products
No Products in your history

My technical documents
No documents in your history

My searches
No Searches in your history

TI Home > Semiconductors > Wireless Connectivity > CC2541 Mini Development Kit

Worldwide (In English)

CC2541 Mini Development Kit

(ACTIVE) CC2541DK-MINI

Description & Features

Technical Documents

Support & Community

Order Now

Description

The CC2541DK-MINI development kit provides a working reference design for software development of single-mode *Bluetooth* low energy (BLE) applications based on the Texas Instruments CC2541. The included "keyfob" board operates as a BLE peripheral device, and contains modifiable software that can be tailored towards different applications. Using BTool (Windows PC application) along with the included CC2540 USB Dongle, the Texas Instruments BLE stack can be tested and verified while developing custom applications.



CC2541 Keyfob, CC2540 USB Dongle and CC Debugger.

Features

The kit contains the following hardware components:

1 x CC2540 USB Dongle: This is the device that will be acting as the BLE Master. It connects to a Windows PC's USB port, and is pre-loaded with the master demo application software.

1 x CC2541 Keyfob: This is the device that will be acting as the BLE Slave. The keyfob can be mounted inside the included plastic enclosure. It operates on a single CR2032 coin cell battery, and contains a two-colored LED, a buzzer, an accelerometer, and two buttons.

1 x CC Debugger with accessories: This is used to flash the software onto both the USB dongle as well as the keyfob. It can also be used for debugging software using IAR Embedded Workbench.

Order Now

Part Number	Buy from Texas Instruments or Third Party	Buy from Authorized Distributor	Status
CC2541DK-MINI: CC2541 Mini Development Kit	\$99.00(USD) In Stock Typically Ships in 1 to 3 Business Days Buy from TI	Pricing may vary. Buy from distributor	ACTIVE
Contact a Distributor	California	Go	

TI's Standard Terms and Conditions for Evaluation Modules apply.

Technical Documents

User Guides (3)

Title	Abstract	Type	Size (KB)	Date	Views
CC2540/41 Bluetooth Low Energy Software Developer's Guide (Rev. F)		PDF	2271	08 Jul 2013	21,415
CC2540 and CC2541 Mini Development Kit User's Guide (Rev. C)		PDF	2299	11 Jan 2013	8,977
CC2541 Mini Development Kit Quick Start Guide (Rev. A)		PDF	776	04 Jan 2013	2,677

White Papers (2)

Title	Abstract	Type	Size (KB)	Date	Views
Wireless Connectivity For The Internet of Things, One Size Does Not Fit All		PDF	393	27 Jun 2014	10,030

Title	Abstract	Type	Size (KB)	Date	Views
Three Flavors of Bluetooth@: Which One to Choose?		PDF	322	25 Mar 2014	3,269

Related Products

Software (1)

Name	Part Number	Software Type
Bluetooth low energy software stack and tools	BLE-STACK	Software Libraries

Development Tools (1)

Name	Part Number	Tool Type
Debugger and Programmer for RF System-on-Chips	CC-DEBUGGER	JTAG Emulators/ Analyzers

Design Kits & Evaluation Modules (3)

Name	Part Number	Tool Type
CC2540 Development Kit	CC2540DK	Development Kits
CC2540 Mini Development Kit	CC2540DK-MINI	Development Kits
CC2541 Evaluation Module Kit	CC2541EMK	Daughter Cards

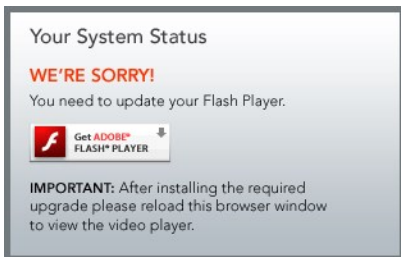
Reference Designs (2)

Name	Part Number	Tool Type
CC2540 USB Dongle Reference Design	CC2540USB-RD	Reference Designs
CC2541 Keyfob Reference Design	CC2541KEYFOB-RD	TI Designs

TI Devices (3)

Part Number	Name	Product Family
CC2540	SimpleLink Bluetooth Smart Wireless MCU with USB	Wireless Connectivity
CC2541	SimpleLink Bluetooth Smart and Proprietary Wireless MCU	Wireless Connectivity
CC2541-Q1	Automotive qualified SimpleLink Bluetooth smart wireless MCU	Wireless Connectivity

Videos



05 In-depth look at Heart Rate Monitor Chest Strap

This video demonstrates a single-lead wireless chest strap heart rate monitor solution using an off-the-shelf heart rate monitor chest strap and TI components.

Posted: 22-Jul-2013

Duration: 04:08

Views: 4942

Tags: wireless, monitor, medical, heart, heart rate, chest strap, Healthhub, Health, demonstration, video, English

[Learn More Here](#)

Related Videos

In-depth look at Heart Rate Monitor Chest Strap

Now Playing

TI SIGNAL INSTRUMENTS

05 In-depth look at Heart Rate Monitor Chest Strap

Getting Started with Bluetooth® | TI's

Play It's

TI SIGNAL INSTRUMENTS

TI Bluetooth Portfolio

Support and Community

Wikis

[Visit the TI Wiki](#)

TI E2E™ community

As a member of [my.TI](#) you can join the [TI E2E™ Community](#) where you can ask questions, share ideas and collaborate with fellow engineers and TI experts

Contents are provided "AS IS" by the respective TI and Community

Engage in the Community

- [Amplifiers](#)
- [Broadband RF/IF & Digital Radio](#)
- [Clocks & Timers](#)
- [Data Converters](#)
- [DLP® & MEMS](#)
- [Interface](#)
- [Logic](#)
- [Power Management](#)
- [Wireless Connectivity](#)

Training & events

Name	Type	Available During
SimpleLink™ Wi-Fi CC3100 and CC3200 Project 0 Series - 5 Part Series Learn about using Software Tools for SimpleLink™ Wi-Fi CC3100 Boosterpack and CC3200 Launchpad	On-Line Training	On Demand
TI-RTOS Update Learn about the latest TI-RTOS features and more in-depth understanding of this TI software tool.	On-Line Training	On Demand
Designing with Ultra Low Power Segmented Displays Learn about designing Ultra-low Power Segmented Displays and MSP430	On-Line Training	On Demand

[See more training & events](#) ▶

Customer Tags ?

Most Popular Tags for CC2541DK-MINI:

- [cc2541](#) (1)

[View All Tags](#) ▶

[Create a Tag](#)

Your History

Products You Recently Viewed

There are no items in your history.