

My products
No Products in your history

My technical documents
No documents in your history

My searches
No Searches in your history

TI Home > Semiconductors > Amplifiers and Linear > PGA450Q1EVM - Automotive Ultrasonic Sensor Signal Conditioner Evaluation Module

Worldwide (In English)

PGA450Q1EVM - Automotive Ultrasonic Sensor Signal Conditioner Evaluation Module

(ACTIVE) PGA450Q1EVM

Description & Features

Technical Documents

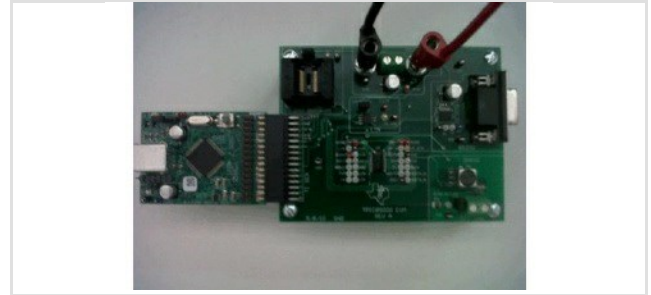
Support & Community

Order Now

Description

This evaluation module features a [PGA450-Q1](#) device which is a system on Chip (SOC) sensor interface IC for automotive ultrasonic sensors. It provides all signal conditioning and processing for the transducer echo signals and for calculating the distance between the transducer and objects. MCU and program memory allow for full configurability for the specific end application.

Application examples are ultrasonic park assist, self parking, blind spot detection and valet parking



Features

- Flexibility in transducer selection (40 kHz – 70 kHz)
- SoC that is highly programmable with integrated 8051 core
- Integrated LIN2.1 master transceiver
- Can be directly connected to car battery, no wide input range LDO required
- Load dump protection
- AEC Q-100

Order Now

Part Number	Buy from Texas Instruments or Third Party	Buy from Authorized Distributor	Status	Lead-Free	RoHS	REACH	WEEE	HI-V (>50VRMS/75 VDC)	CE	CE-EMC	CE-RTTE/LVD	FCC	Batteries	Enclosure	Ext Power Supply
PGA450Q1EVM: PGA450Q1EVM - Automotive Ultrasonic Sensor Signal Conditioner Evaluation Module	\$99.00(USD) In Stock Typically Ships in 1 to 3 Business Days Buy from TI	Pricing may vary. Buy from distributor	ACTIVE	Yes	Yes	NA	NA	No	NA	NA	NA	NA	No	No	No

Contact a Distributor

TI's [Standard Terms and Conditions for Evaluation Modules](#) apply.

Technical Documents

User Guides (1)

Title	Abstract	Type	Size (KB)	Date	Views
PGA450-Q1 EVM User's Guide (Rev. A)		PDF	9198	22 Jan 2013	1,077

Related Products

TI Devices (1)

Part Number	Name	Product Family
PGA450-Q1	Automotive Ultrasonic Sensor Signal Conditioner	Ultrasonic Sensing

Part Number	Name	Product Family
-------------	------	----------------

Support and Community

Wikis

[Visit the TI Wiki](#)

TI E2E™ community



As a member of [my.TI](#) you can join the [TI E2E™ Community](#) where you can ask questions, share ideas and collaborate with fellow engineers and TI experts

Contents are provided "AS IS" by the respective TI and Community contributors and do not constitute TI specifications. See [Terms of use](#).

Engage in the Community

- [Amplifiers](#)
- [Broadband RF/IF & Digital Radio](#)
- [Clocks & Timers](#)
- [Data Converters](#)
- [DLP® & MEMS](#)
- [Interface](#)
- [Logic](#)
- [Power Management](#)
- [Wireless Connectivity](#)

Training & events

Name	Type	Available During
Georgia Tech MOOC: Control of Mobile Robots Learn how to make mobile robots move in effective, safe, predictable, and collaborative ways using modern control theory.	On-Line Training	On Demand
SimpleLink™ Wi-Fi CC3100 and CC3200 Project 0 Series - 5 Part Series Learn about using Software Tools for SimpleLink™ Wi-Fi CC3100 Boosterpack and CC3200 Launchpad	On-Line Training	On Demand
TI-RTOS Update Learn about the latest TI-RTOS features and more in-depth understanding of this TI software tool.	On-Line Training	On Demand
Designing with Ultra Low Power Segmented Displays Learn about designing Ultra-low Power Segmented Displays and MSP430	On-Line Training	On Demand

[See more training & events](#) ▶

Customer Tags ?

Most Popular Tags for PGA450Q1EVM:

- [ultrasound chip](#) (1)

[View All Tags](#) ▶

[Create a Tag](#)

Other Support

- [TI E2E Community](#)
- [Contact Technical Support](#)

Your History

Products You Recently Viewed

There are no items in your history.