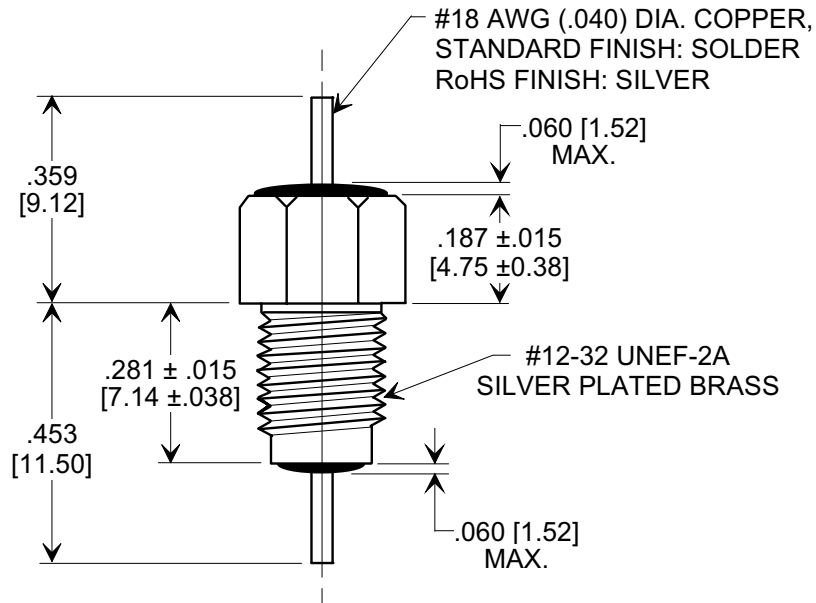
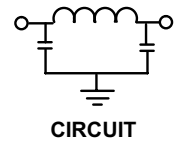
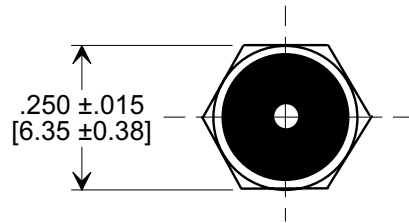
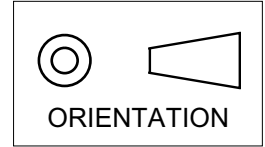


**MARKETING SALES DRAWING**  
**DIMENSIONS IN INCHES - DO NOT SCALE THIS DRAWING**  
**DIMENSIONS IN METRIC - [ ]**

Electrical Testing  
per Tusonix standard  
test plans and Mil-Std-202  
Test Methods.



**NOTES:**

- SUPPLIED WITH SILVER PLATED HEX NUT AND LOCK WASHER.
- TUSONIX STANDARD PART NUMBER: 4202-025.  
TUSONIX RoHS COMPLIANT PART NUMBER: 4202-025 LF.  
CUSTOMER MUST SPECIFY STANDARD OR RoHS PART NUMBER WHEN ORDERING.
- PART MARKING: TRADEMARK AND VARIATION NUMBER ON HEX FLATS.  
STANDARD PART: BLACK INK. RoHS PART: GREEN INK.

CAP. (pF)	TOL.	WORKING VOLTAGE (VDC)		CURRENT (Idc)	I.R. MIN. @ 100 (VDC.)	DWV (VDC)	MINIMUM NO LOAD INSERTION LOSS (dB) AT 25°C PER MIL-STD -220			
		85°C	125°C				50 MHz	100 MHz	1 GHz	10 GHz
100	± 20%	500	350	10 A	10 G	1200	3	10	45	45

<b>X-2015 Rev-0</b> <b>REVISION RECORD</b> Original Release C.O. <b>19980908-1-01</b> ADDED NOTES 2, 3, METRIC, IR & DWV. S.M. 05-19-05 <b>20050503-6-15</b>	<b>0</b>	<b>--TOLERANCES--</b> Unless Otherwise Specified  <b>DECIMAL ± .031[0.79]</b>  <b>ANGLES ±</b>	Title <b>BUSHING STYLE  EMI FILTER</b>	
	<b>TUSONIX</b> TUCSON, ARIZONA		Drawn S.M. 08-09-98	Scale <b>3 X</b>
			Approved J.Mc. 08-09-98	
	<b>A</b>		<b>4202-025</b>	