



SAW Components

Duplexers for Cellular Phones

Series/Type: B7953

The following products presented in this data sheet are being withdrawn.

Ordering Code	Substitute Product	Date of Withdrawal	Deadline Last Orders	Last Shipments
B39941B7953E110	B39941B7934P810	2012-12-21	2013-12-31	2014-02-28

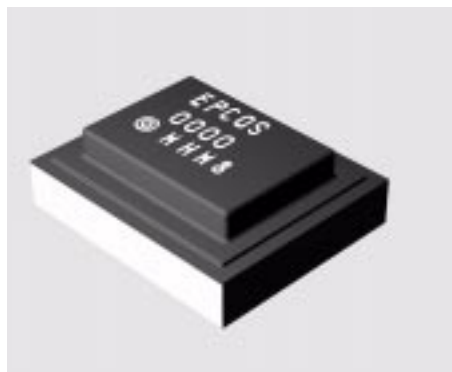
For further information please contact your nearest EPCOS sales office, which will also support you in selecting a suitable substitute. The addresses of our worldwide sales network are presented at www.epcos.com/sales.

© EPCOS AG 2015. Reproduction, publication and dissemination of this publication, enclosures hereto and the information contained therein without EPCOS' prior express consent is prohibited.

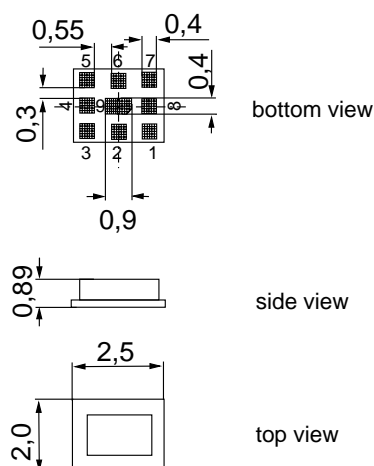
EPCOS AG is a TDK Group Company.

Application

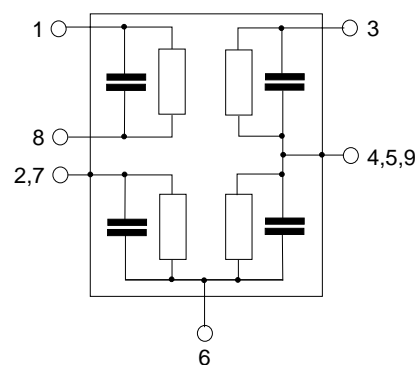
- Low-loss SAW duplexer for mobile telephone WCDMA Band VIII systems
- Low insertion attenuation
- Low amplitude ripple
- Usable passband 35 MHz
- Single ended to balanced transformation in Antenna - Rx path
- Impedance transformation 50Ω to 100Ω in Antenna - Rx path
- Fully matched by integrated passives network


Features

- Package size 2.5 x 2.0 x 0.89 mm³
- RoHS compatible
- Package for **Surface Mount Technology (SMT)**
- Ni, gold-plated terminals
- **Electrostatic Sensitive Device (ESD)**


Pin configuration

- 1,8 RX output, balanced
- 3 TX input, single ended
- 6 Antenna
- 2,4,5,7,9 Ground



SAW Components
B7953
SAW duplexer
897.5 / 942.5 MHz
Data sheet

Characteristics

Temperature range for specification: $T = -20\text{ }^{\circ}\text{C}$ to $+85\text{ }^{\circ}\text{C}$
 ANT terminating impedance: $Z_{\text{ANT}} = 50\text{ }\Omega$
 TX terminating impedance: $Z_{\text{TX}} = 50\text{ }\Omega$
 RX terminating impedance: $Z_{\text{RX}} = 100\text{ }\Omega$ (balanced)

						B7953			
Characteristics Tx - Ant						min.	typ. @ 25 °C	max.	
Center frequency	f_C					—	897.5	—	MHz
Maximum insertion attenuation									
@ f_{Carrier} 882.4 ... 912.6 MHz	$\alpha_{\text{WCDMA}}^{1)}$					—	1.9	2.8	dB
Amplitude ripple (p-p)									
@ f_{Carrier} 882.4 ... 912.6 MHz	$\Delta\alpha_{\text{WCDMA}}^{1)}$					—	0.7	1.6	dB
Error Vector Magnitude									
@ f_{Carrier} 882.4 ... 912.6 MHz	EVM ²⁾					—	2.2	5.5	%
@ f_{Carrier} 882.4 ... 912.6 MHz	EVM ²⁾					—	2.2	4.0 ³⁾	%
VSWR									
TX port 880.0 ... 915.0 MHz						—	1.7	2.0	
ANT port 880.0 ... 915.0 MHz						—	1.7	2.0	
Attenuation	α								
0.3 ... 793.0 MHz						30	33	—	dB
@ f_{Carrier} 927.4 ... 957.6 MHz	$\alpha_{\text{WCDMA}}^{1)}$					38	44	—	dB
1574.0 ... 1577.0 MHz						38	42	—	dB
1760.0 ... 1830.0 MHz						38	49	—	dB
1830.0 ... 1880.0 MHz						27	52	—	dB
2110.0 ... 2170.0 MHz						27	44	—	dB
2400.0 ... 2500.0 MHz						30	36	—	dB
2620.0 ... 2745.0 MHz						30	35	—	dB
3520.0 ... 3660.0 MHz						20	27	—	dB
4400.0 ... 4575.0 MHz						15	23	—	dB
5150.0 ... 5490.0 MHz						2	10	—	dB
5725.0 ... 5850.0 MHz						2	8	—	dB

¹⁾ Attenuation of WCDMA signal ("Powertransferfunction"). Please refer to annotation on page (5).

²⁾ Error Vector Magnitude (EVM) based on definition given in 3GPP TS 25.141.

³⁾ $T = -15\text{ }^{\circ}\text{C}$ to $+55\text{ }^{\circ}\text{C}$

SAW Components
B7953
SAW duplexer
897.5 / 942.5 MHz
Data sheet

Characteristics

Temperature range for specification: $T = -20\text{ }^{\circ}\text{C}$ to $+85\text{ }^{\circ}\text{C}$
 ANT terminating impedance: $Z_{\text{ANT}} = 50\ \Omega$
 TX terminating impedance: $Z_{\text{TX}} = 50\ \Omega$
 RX terminating impedance: $Z_{\text{RX}} = 100\ \Omega$ (balanced)

						B7953			
Charcteristics Rx - Ant						min.	typ. @ 25 °C	max.	
Center frequency		f _C				—	942.5	—	MHz
Maximum insertion attenuation									
@f _{Carrier} 927.4 ... 957.6 MHz		α _{WCDMA} ¹⁾			—	2.3	2.9	dB	
925.0 ... 960.0 MHz					—	3.0	4.0	dB	
Amplitude ripple (p-p)									
@f _{Carrier} 927.4 ... 957.6 MHz		Δα _{WCDMA} ¹⁾			—	0.7	1.4	dB	
Error Vector Magnitude									
@f _{Carrier} 927.4 ... 957.6 MHz		EVM ²⁾			—	2.7	5.5	%	
@f _{Carrier} 927.4 ... 957.6 MHz		EVM ²⁾			—	2.7	4.5 ³⁾	%	
VSWR									
RX port 925.0 ... 960.0 MHz					—	1.9	2.2		
ANT port 925.0 ... 960.0 MHz					—	1.6	2.0		
Common Mode Suppression						α			
925.0 ... 960.0 MHz					25	28	—	dB	
Attenuation						α			
0.3 ... 880.0 MHz					35	57	—	dB	
@f _{Carrier} 882.4 ... 912.6 MHz		α _{WCDMA} ¹⁾			48	58	—	dB	
1045.0 ... 1750.0 MHz					35	54	—	dB	
1750.0 ... 4810.0 MHz					35	54	—	dB	
Characteristics Tx - Rx									
Differential Mode Isolation									
@f _{Carrier} 882.4 ... 912.6 MHz		α _{WCDMA} ¹⁾			55	58	—	dB	
@f _{Carrier} 927.4 ... 957.6 MHz		α _{WCDMA} ¹⁾			42	45	—	dB	
Common Mode Isolation									
@f _{Carrier} 882.4 ... 912.6 MHz		α _{WCDMA} ¹⁾			50	55	—	dB	

¹⁾ Attenuation of WCDMA signal ("Powertransferfunction"). Please refer to annotation on page (5).

²⁾ Error Vector Magnitude (EVM) based on definition given in 3GPP TS 25.141.

³⁾ $T = +5\text{ }^{\circ}\text{C}$ to $+85\text{ }^{\circ}\text{C}$

SAW Components
B7953
SAW duplexer
897.5 / 942.5 MHz
Data sheet

Maximum ratings

Operable temperature range ¹⁾	T	−30/+85	°C	
Storage temperature range	T _{stg}	−40/+85	°C	
DC voltage	V _{DC}	5	V	
ESD voltage	V _{ESD}	100 ²⁾	V	machine model, 10 pulses
Input power at 880.0 ... 915.0 MHz elsewhere	P _{IN}	30 10	dBm dBm	} continuous wave 55 °C, 10000 h

¹⁾ Defines the temperature range in which the SAW device keeps its typical characteristics, however the specification values are not guaranteed.

²⁾ acc. to JESD22-A115A (machine model), 10 negative & 10 positive pulses.

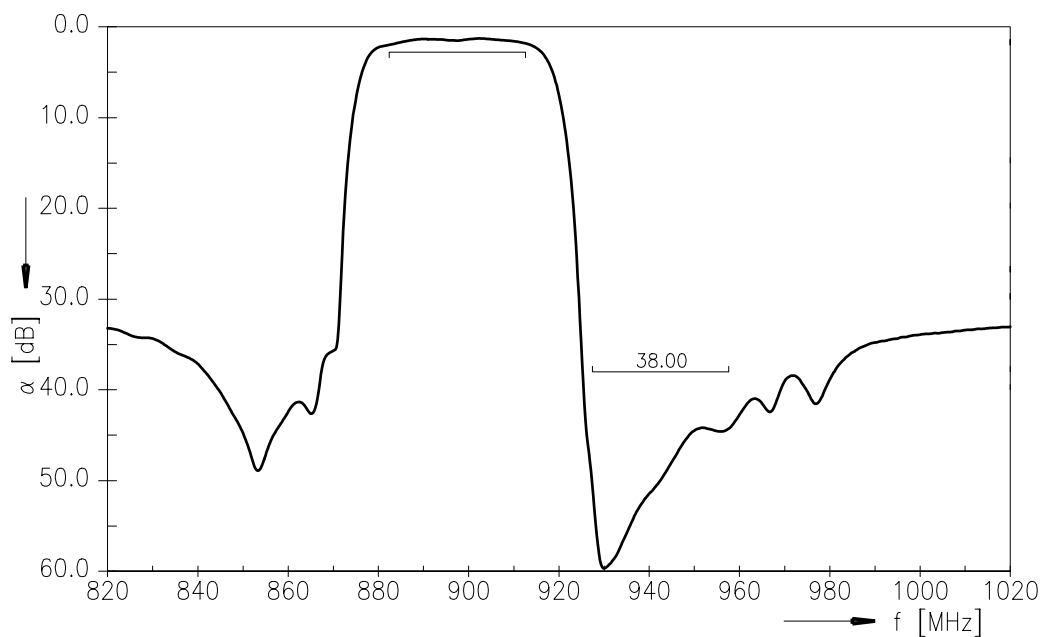
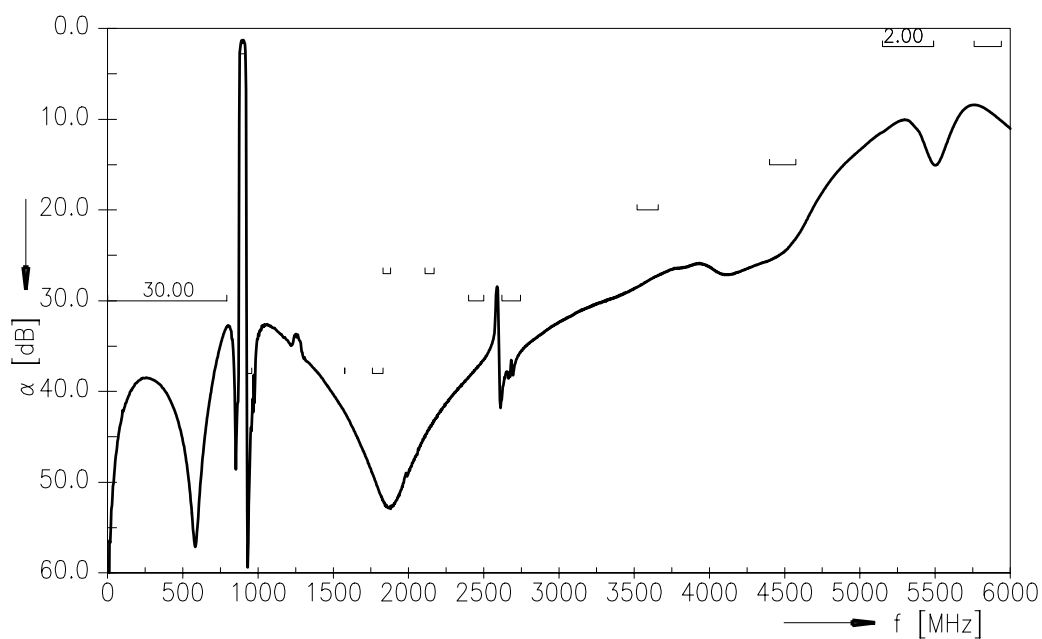
Annotation for characteristics section

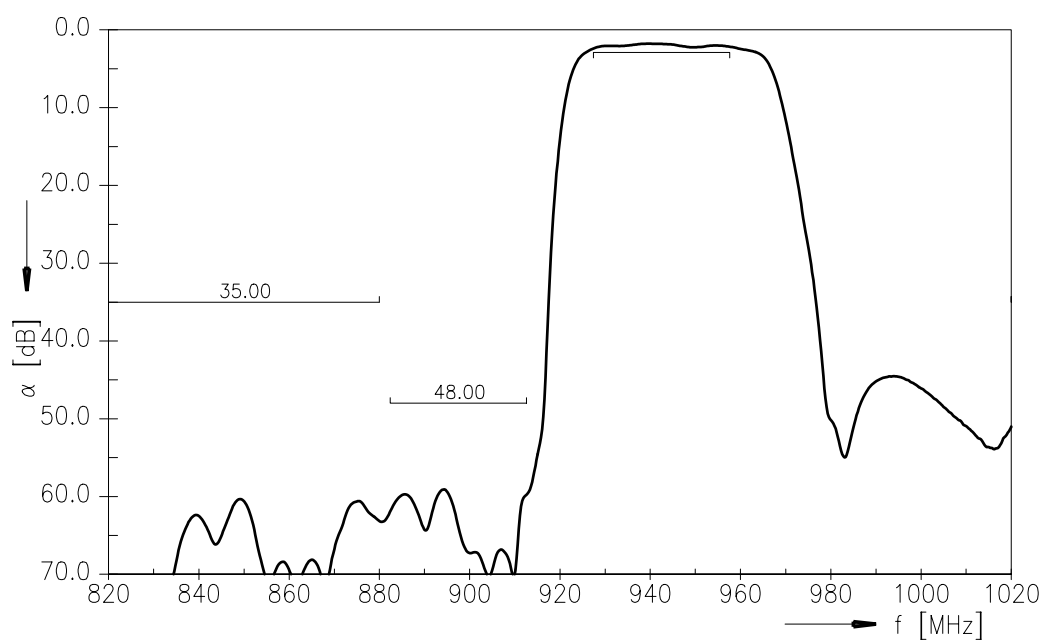
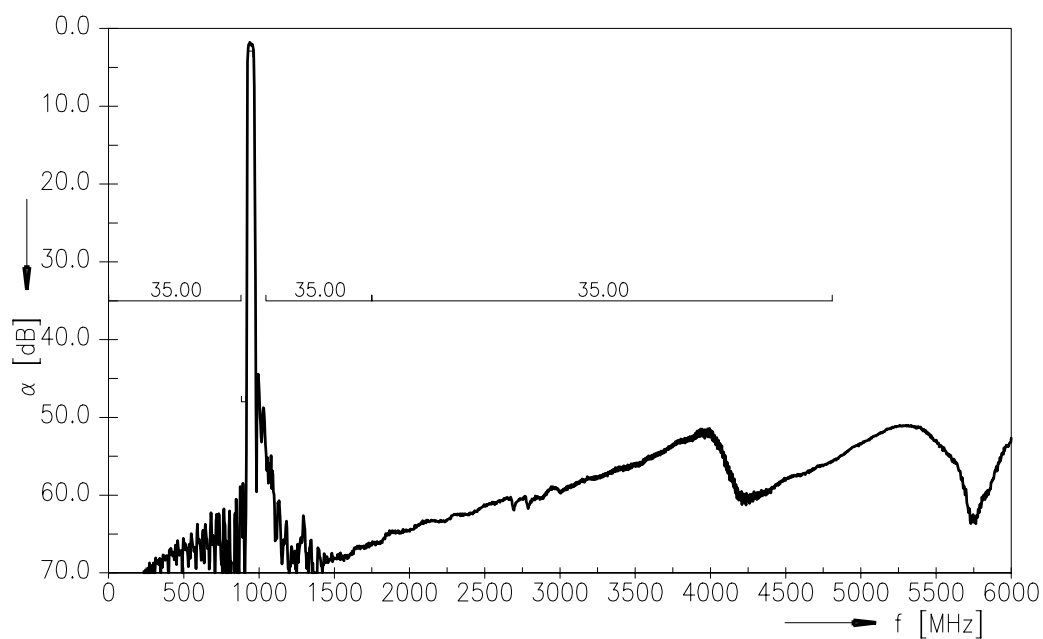
Attenuation of WCDMA signal ("Powertransferfunction", α_{WCDMA}) is determined by

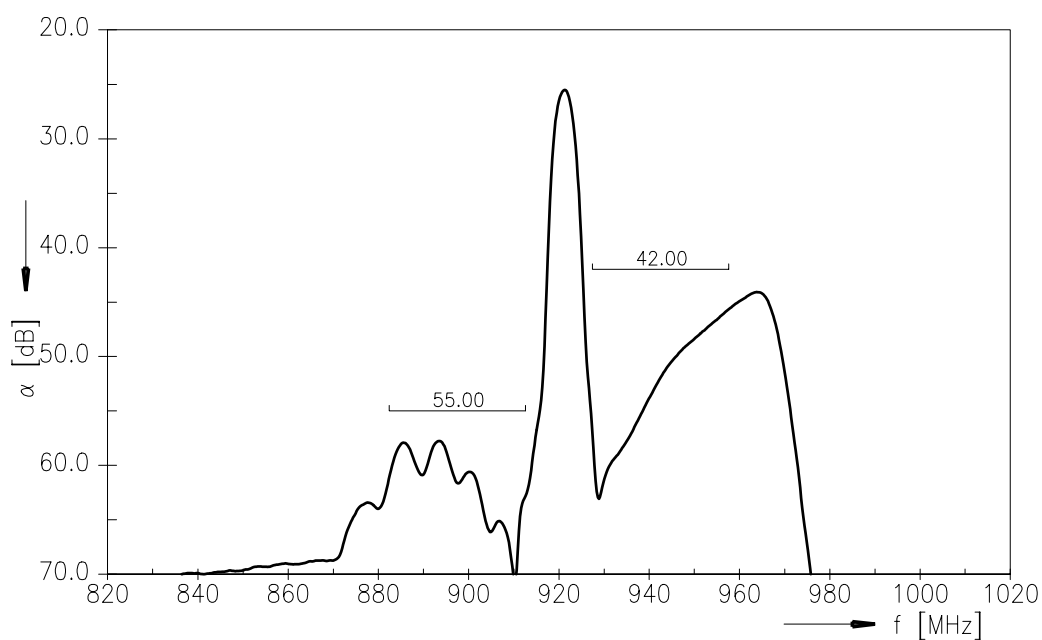
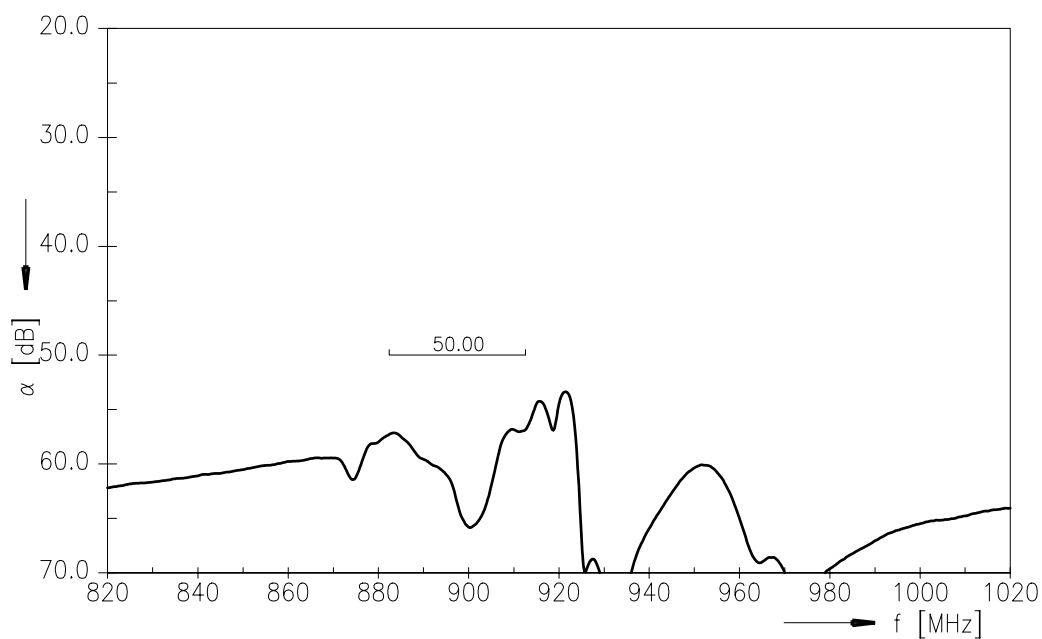
$$\int_{-\infty}^{\infty} |S_{\text{ds21}}(f) H_{\text{RRC}}(f - f_{\text{Carrier}})|^2 df$$

f_{Carrier} according to 3GPP TS 25.101 (e.g. for UMTS-Passband, f_{Carrier} ranges from 2112.4 MHz (lowest Rx channel) to 2167.6 MHz (highest Rx channel)). $H_{\text{RRC}}(f)$ is the transfer function of the root-raised cosine transmit pulse shaping filter according to 3GPP TS 25.101 with the following normalization:

$$\int_{-\infty}^{\infty} |H_{\text{RRC}}(f)|^2 df = 1$$

Frequency Response TX-ANT (Power transfer function)

Frequency Response TX-ANT (wideband)


Frequency Response ANT - RX (Power transfer function)

Frequency Response ANT - RX (wideband)


Frequency Response TX - RX (Power transfer function, differential mode)

Frequency Response TX - RX (Power transfer function, common mode)


SAW Components
B7953
SAW duplexer
897.5 / 942.5 MHz

Data sheet


References

Type	B7953
Ordering code	B39941B7953E110
Marking and package	C61157-Z3-C49
Packaging	F61074-V8153-Z000
Date codes	L_1126
S-parameters	B7953_NB_UN.s4p, B7953_WB_UN.s4p see file header for port/pin assignment table
Soldering profile	S_6001
RoHS compatible	defined as compatible with the following documents: "DIRECTIVE 2002/95/EC OF THE EUROPEAN PARLIAMENT AND OF THE COUNCIL of 27 January 2003 on the restriction of the use of certain hazardous substances in electrical and electronic equipment. 2005/618/EC from April 18th, 2005, amending Directive 2002/95/EC of the European Parliament and of the Council for the purposes of establishing the maximum concentration values for certain hazardous substances in electrical and electronic equipment."
Moldability	Before using in overmolding environment, please contact your EPCOS sales office.

For further information please contact your local EPCOS sales office or visit our webpage at www.epcos.com.

Published by EPCOS AG

Surface Acoustic Wave Components Division

P.O. Box 80 17 09, 81617 Munich, GERMANY

© EPCOS AG 2009. This brochure replaces the previous edition.

For questions on technology, prices and delivery please contact the Sales Offices of EPCOS AG or the international Representatives.

Due to technical requirements components may contain dangerous substances. For information on the type in question please also contact one of our Sales Offices.

Please read *cautions and warnings and important notes* at the end of this document.

Important notes

The following applies to all products named in this publication:

1. Some parts of this publication contain **statements about the suitability of our products for certain areas of application**. These statements are based on our knowledge of typical requirements that are often placed on our products in the areas of application concerned. We nevertheless expressly point out **that such statements cannot be regarded as binding statements about the suitability of our products for a particular customer application**. As a rule, EPCOS is either unfamiliar with individual customer applications or less familiar with them than the customers themselves. For these reasons, it is always ultimately incumbent on the customer to check and decide whether an EPCOS product with the properties described in the product specification is suitable for use in a particular customer application.
2. We also point out that **in individual cases, a malfunction of electronic components or failure before the end of their usual service life cannot be completely ruled out in the current state of the art, even if they are operated as specified**. In customer applications requiring a very high level of operational safety and especially in customer applications in which the malfunction or failure of an electronic component could endanger human life or health (e.g. in accident prevention or life-saving systems), it must therefore be ensured by means of suitable design of the customer application or other action taken by the customer (e.g. installation of protective circuitry or redundancy) that no injury or damage is sustained by third parties in the event of malfunction or failure of an electronic component.
3. **The warnings, cautions and product-specific notes must be observed.**
4. In order to satisfy certain technical requirements, **some of the products described in this publication may contain substances subject to restrictions in certain jurisdictions (e.g. because they are classed as hazardous)**. Useful information on this will be found in our Material Data Sheets on the Internet (www.epcos.com/material). Should you have any more detailed questions, please contact our sales offices.
5. We constantly strive to improve our products. Consequently, **the products described in this publication may change from time to time**. The same is true of the corresponding product specifications. Please check therefore to what extent product descriptions and specifications contained in this publication are still applicable before or when you place an order. We also **reserve the right to discontinue production and delivery of products**. Consequently, we cannot guarantee that all products named in this publication will always be available. The aforementioned does not apply in the case of individual agreements deviating from the foregoing for customer-specific products.
6. Unless otherwise agreed in individual contracts, **all orders are subject to the current version of the "General Terms of Delivery for Products and Services in the Electrical Industry" published by the German Electrical and Electronics Industry Association (ZVEI)**.
7. The trade names EPCOS, BAOKE, Alu-X, CeraDiode, CSMP, CSSP, CTVS, DSSP, MiniBlue, MiniCell, MKK, MLSC, MotorCap, PCC, PhaseCap, PhaseCube, PhaseMod, PhiCap, SIFERRIT, SIFI, SIKOREL, SilverCap, SIMDAD, SIMID, SineFormer, SIOV, SIP5D, SIP5K, ThermoFuse, WindCap are **trademarks registered or pending** in Europe and in other countries. Further information will be found on the Internet at www.epcos.com/trademarks.