



Ordering Information

Part Numbers	Description	Module Speed
SG572568FH8SZKA1	256Mx72 (2GB), DDR3, 244-pin Unbuffered Mini-DIMM, ECC, 256Mx8 Based, DDR3-800-555, 18.75mm, Green Module (RoHS Compliant).	PC3-6400 @ CL 5, 6
SG572568FH8SZ6B1	256Mx72 (2GB), DDR3, 244-pin Unbuffered Mini-DIMM, ECC, 256Mx8 Based, DDR3-800-666, 18.75mm, Green Module (RoHS Compliant).	PC3-6400 @ CL 6
SG572568FH8SZRE1	256Mx72 (2GB), DDR3, 244-pin Unbuffered Mini-DIMM, ECC, 256Mx8 Based, DDR3-1066-666, 18.75mm, Green Module (RoHS Compliant).	PC3-8500 @ CL 6, 7, 8
SG572568FH8SZLC1	256Mx72 (2GB), DDR3, 244-pin Unbuffered Mini-DIMM, ECC, 256Mx8 Based, DDR3-1066-777, 18.75mm, Green Module (RoHS Compliant).	PC3-8500 @ CL 7, 8
SG572568FH8SZMD1	256Mx72 (2GB), DDR3, 244-pin Unbuffered Mini-DIMM, ECC, 256Mx8 Based, DDR3-1066-888, 18.75mm, Green Module (RoHS Compliant).	PC3-8500 @ CL 8
SG572568FH8SZNG1	256Mx72 (2GB), DDR3, 244-pin Unbuffered Mini-DIMM, ECC, 256Mx8 Based, DDR3-1333-888, 18.75mm, Green Module (RoHS Compliant).	PC3-10600 @ CL 8, 9
SG572568FH8SZPH1	256Mx72 (2GB), DDR3, 244-pin Unbuffered Mini-DIMM, ECC, 256Mx8 Based, DDR3-1333-999, 18.75mm, Green Module (RoHS Compliant).	PC3-10600 @ CL 9

(All specifications of this module are subject to change without notice.)



Revision History

- **February 1, 2010**
Corrected the number of module ranks & the number of devices in the Features on page 3.
- **November 13, 2009**
Preliminary datasheet released.

Preliminary



**2GByte (256Mx72) DDR3 SDRAM Module - 256Mx8 Based
244-pin Unbuffered Mini-DIMM, ECC**

Features

- Standard = JEDEC
- Configuration = ECC
- Number of Module Ranks = 1
- Number of Devices = 9
- $V_{DD} = V_{DDQ} = 1.5V$
- $V_{DDSPD} = 1.7V$ to 3.6V
- Cycle Time = 2.5ns (PC3-6400)
1.875 (PC3-8500)
1.5ns (PC3-10600)
- \overline{CAS} Latency = 5, 6, 7, 8, 9
- Additive Latency = 0, CL-1, and CL-2
- \overline{CAS} Write Latency (CWL) = 5, 6, 7
- Burst Length = BC4, BL8, BC4 or BL8 (on the fly)
- Burst Length = Nibble Sequential & Interleave Mode
- Internal Banks per SDRAM = 8
- Refresh = 8K/64ms
- Device Package = FBGA
- Lead Finish = Gold
- Length x Height = 82.00mm x 18.75mm
- No. of sides = Double-sided
- Mating Connector (Examples)
Horizontal = Molex - 87918-0301
Angled = Molex - 87783-0301
- ZQ calibration supported
- On chip DLL align DQ, DQS and \overline{DQS} transition with CK transition
- DM write data-in at both the rising and falling edges of the data strobe
- All addresses and control inputs latched on the rising edges of the clock
- Dynamic On Die Termination supported
- Driver strength selected by EMRS
- Asynchronous RESET pin supported
- Write Levelization supported
- 8-bit pre-fetch

Addressing

Device Configuration	256Mx8
Number of Internal Banks	8
Bank Address	BA0 - BA2
Auto precharge	A10/AP
BC switch on the fly	A12/ \overline{BC}
Row Address	A0 - A14
Column Address	A0 - A9

Pin Description Table

Symbol	Type	Polarity	Function
$\overline{CK0} \sim \overline{CK1}$, $CK0 \sim CK1$	SSTL_15	Differential Crossing	CK and \overline{CK} are differential clock inputs. All the DDR3 SDRAM address/control inputs are sampled on the crossing of the positive edge of CK and the negative edge of \overline{CK} . Output (read) data is referenced to the crossing of CK and \overline{CK} (Both directions of crossing).
CKE0	SSTL_15	Active High	Activates the SDRAM CK signal when high and deactivates the CK signal when low. By deactivating the clocks, CKE low initiates the Power Down mode, or the Self Refresh mode.
$\overline{CS0}$	SSTL_15	Active Low	Enables the associated SDRAM command decoder when low and disables the command decoder when high. When decoder is disabled, new commands are ignored but previous operations continue. This signal provides for external rank selection on systems with multiple ranks.
ODT0	SSTL_15	Active High	When high, termination resistance is enabled for all DQ, DQS, \overline{DQS} and DM pins, assuming this function is enabled on the DRAM.
BA0~BA2	SSTL_15	-	Selects which SDRAM bank of the eight is activated.



Pin Description Table (Contd.)

Symbol	Type	Polarity	Function
A0~A14	SSTL_15	-	During a Bank Activate command cycle, address inputs define the row address (RA0-RA14). During a Read or Write command cycle, address inputs define the column address (CA0-CA9). In addition to the column address, AP is used to invoke auto-precharge operation at the end of the burst read or write cycle. If AP is high, auto-precharge is selected and BA0, BA1, BA2 defines the bank to be precharged. If AP is low, auto-precharge is disabled. During a Precharge command cycle, AP is used in conjunction with BA0, BA1, BA2 to control which bank(s) to precharge. If AP is high, all banks will be precharged regardless of the state of BA0, BA1 or BA2. If AP is low, BA0, BA1 and BA2 are used to define which bank to precharge. A12(BC) is sampled during READ and WRITE commands to determine if burst chop (on-the-fly) will be performed (HIGH, no burst chop; LOW, burst chopped). A14~A15 are only connected to the register for the parity check.
RAS, CAS, WE	SSTL_15	Active Low	RAS, CAS, and WE (along with CS) define the command being entered.
DQ0~DQ63 CB0~CB7	SSTL_15	-	Data and Check Bit Input/Output pins.
DQS0~DQS8 DQS0~DQS8	SSTL_15	Differential Crossing	Data strobe for input and output data.
DM0~DM8	SSTL_15	Active High	DM is an input mask signal for write data. Input data is masked when DM is sampled high coincident with that input data during a write access. DM is sampled on both edges of DQS. Although DM pins are input only, the DM loading matches the DQ and DQS loading.
SA0~SA2		-	These signals are tied at the system to either V _{SS} or V _{DDSPD} to configure the serial SPD EEPROM address range.
SDA		-	This bidirectional pin is used to transfer data into or out of the SPD EEPROM. An external resistor may be connected from the SDA bus line to V _{DDSPD} to act as a pullup on the system board.
SCL		-	This signal is used to clock data into and out of the SPD EEPROM. An external resistor may be connected from the SCL bus tied to V _{DDSPD} to act as a pullup on the system board.
EVENT	Output	Active Low	This signal indicates that a thermal event has been detected in the thermal sensing device. The system should guarantee the electrical level requirement is met for the EVENT pin on TS/SPD part. No pull-up resistor is provided on DIMM.
RESET	CMOS	Active Low	Asynchronous Reset is active when RESET is LOW, and inactive when RESET is HIGH. RESET must be HIGH during normal operation. RESET is CMOS rail to rail signal with DC high and low at 80% and 20% of V _{DD} .
V _{DD} , V _{SS}	Supply	-	Power and ground for the DDR3 SDRAM input buffers, and core logic. V _{DD} and V _{DDQ} pins are tied to V _{DD} /V _{DDQ} planes on these modules. V _{SS} pins are tied to V _{SS} planes on these modules.
V _{DDQ}	Supply	-	Power supply for the DDR3 SDRAM output buffers to provide improved noise immunity. V _{DDQ} shares the same power plane as V _{DD} pins.
V _{REFDQ}	Supply	-	Reference voltage for I/O inputs.
V _{REFCA}	Supply	-	Reference voltage for address/command inputs.
V _{DDSPD}	Supply	-	Power supply for SPD EEPROM. This supply is separate from the V _{DD} /V _{DDQ} power plane. EEPROM supply is operable from 1.7V to 3.6V.
V _{TT}	Supply	-	Termination voltage for address/command/control/clock nets.
NC	-	-	No Connect.

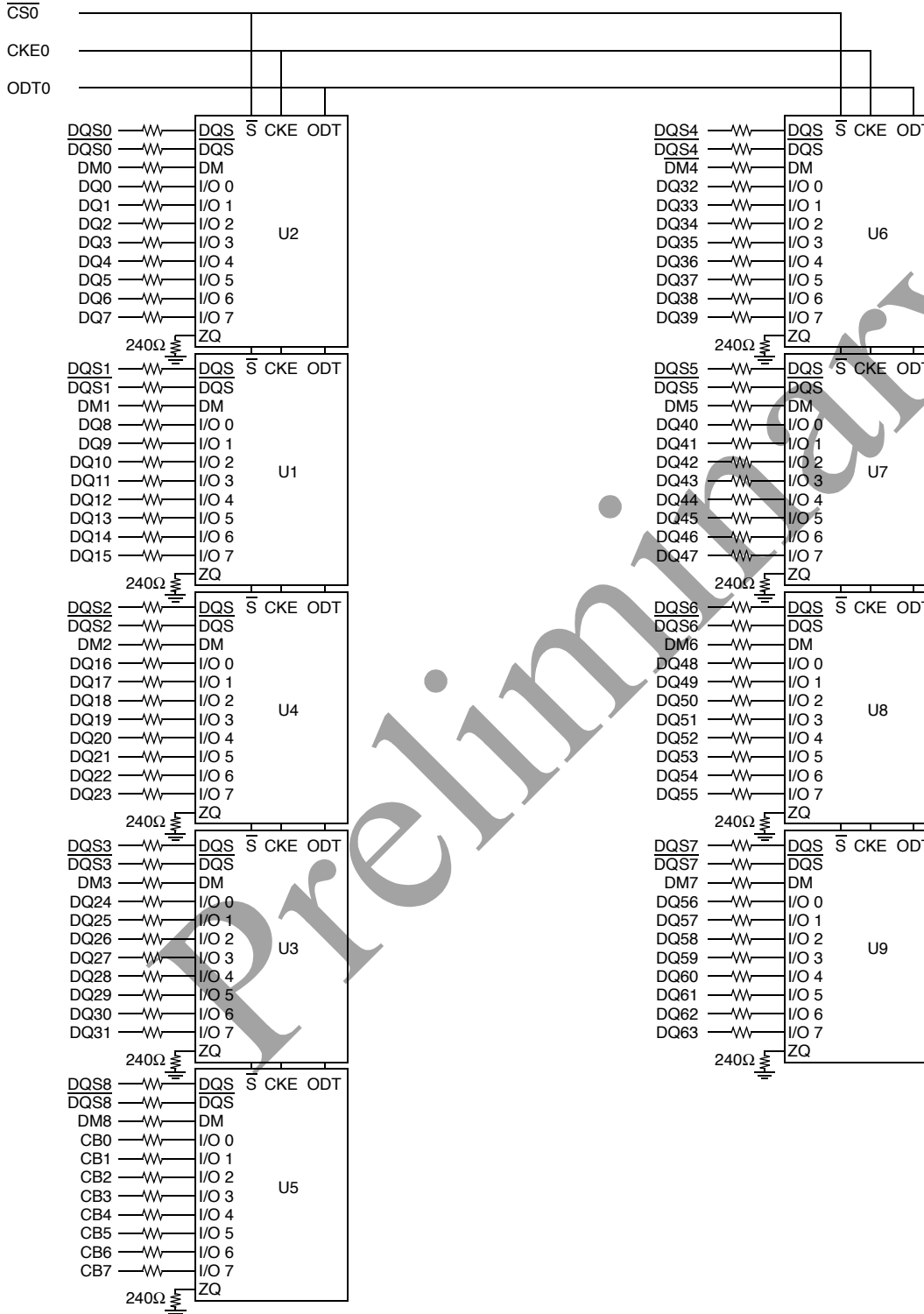


DDR3 244-pin Mini-DIMM Pin List

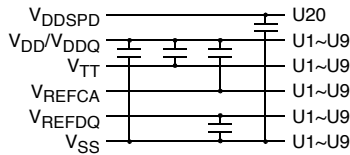
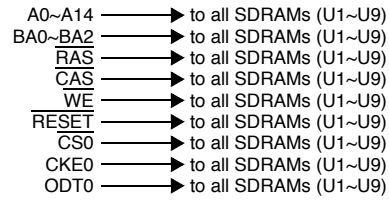
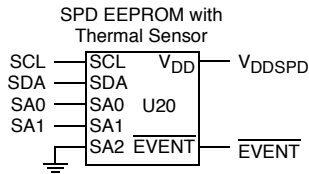
Pin No	Pin Name	Pin No	Pin Name	Pin No	Pin Name	Pin No	Pin Name	Pin No	Pin Name	Pin No	Pin Name	Pin No	Pin Name	Pin No	Pin Name
1	V _{TT}	32	DQ25	63	V _{DD}	93	DQ41	123	V _{TT}	154	V _{SS}	185	V _{DD}	215	V _{SS}
2	V _{REFDQ}	33	V _{SS}	64	CK1	94	V _{SS}	124	V _{SS}	155	DM3	186	CK0	216	DM5
3	V _{SS}	34	$\overline{\text{DQS3}}$	65	$\overline{\text{CK1}}$	95	$\overline{\text{DQS5}}$	125	DQ4	156	NC	187	$\overline{\text{CK0}}$	217	NC
4	DQ0	35	DQS3	66	V _{DD}	96	DQS5	126	DQ5	157	V _{SS}	188	V _{DD}	218	V _{SS}
5	DQ1	36	V _{SS}	67	V _{REFCA}	97	V _{SS}	127	V _{SS}	158	DQ30	189	V _{DD}	219	DQ46
6	V _{SS}	37	DQ26	68	V _{DD}	98	DQ42	128	DM0	159	DQ31	190	$\overline{\text{EVENT}}$	220	DQ47
7	$\overline{\text{DQS0}}$	38	DQ27	69	NC	99	DQ43	129	NC	160	V _{SS}	191	A0	221	V _{SS}
8	DQS0	39	V _{SS}	70	V _{DD}	100	V _{SS}	130	V _{SS}	161	CB4	192	V _{DD}	222	DQ52
9	V _{SS}	40	CB0	71	A10/AP	101	DQ48	131	DQ6	162	CB5	193	BA1	223	DQ53
10	DQ2	41	CB1	72	BA0	102	DQ49	132	DQ7	163	V _{SS}	194	V _{DD}	224	V _{SS}
11	DQ3	42	V _{SS}	73	V _{DD}	103	V _{SS}	133	V _{SS}	164	DM8	195	$\overline{\text{RAS}}$	225	DM6
12	V _{SS}	43	$\overline{\text{DQS8}}$	74	$\overline{\text{WE}}$	104	$\overline{\text{DQS6}}$	134	DQ12	165	NC	196	$\overline{\text{CS0}}$	226	NC
13	DQ8	44	DQS8	75	$\overline{\text{CAS}}$	105	DQS6	135	DQ13	166	V _{SS}	197	V _{DD}	227	V _{SS}
14	DQ9	45	V _{SS}	76	V _{DD}	106	V _{SS}	136	V _{SS}	167	CB6	198	ODT0	228	DQ54
15	V _{SS}	46	CB2	77	$\overline{\text{CS1}}$ (NC)	107	DQ50	137	DM1	168	CB7	199	A13	229	DQ55
16	$\overline{\text{DQS1}}$	47	CB3	78	ODT1 (NC)	108	DQ51	138	NC	169	V _{SS}	200	V _{DD}	230	V _{SS}
17	DQS1	48	V _{SS}	79	V _{DD}	109	V _{SS}	139	V _{SS}	170	RFU	201	CS3# (NC)	231	DQ60
18	V _{SS}	49	RFU	80	$\overline{\text{CS2}}$ (NC)	110	DQ56	140	DQ14	171	NC	202	RFU	232	DQ61
19	DQ10	50	$\overline{\text{RESET}}$	81	RFU	111	DQ57	141	DQ15	172	CKE1 (NC)	203	V _{SS}	233	V _{SS}
20	DQ11	51	CKE0	82	V _{SS}	112	V _{SS}	142	V _{SS}	173	V _{DD}	204	DQ36	234	DM7
21	V _{SS}	52	V _{DD}	83	DQ32	113	$\overline{\text{DQS7}}$	143	DQ20	174	A15 (NC)	205	DQ37	235	NC
22	DQ16	53	BA2	84	DQ33	114	DQS7	144	DQ21	175	A14	206	V _{SS}	236	V _{SS}
23	DQ17	54	NC	85	V _{SS}	115	V _{SS}	145	V _{SS}	176	V _{DD}	207	DM4	237	DQ62
24	V _{SS}	55	V _{DD}	86	$\overline{\text{DQS4}}$	116	DQ58	146	DM2	177	A12/ $\overline{\text{BC}}$	208	NC	238	DQ63
25	$\overline{\text{DQS2}}$	56	A11	87	DQS4	117	DQ59	147	NC	178	A9	209	V _{SS}	239	V _{SS}
26	DQS2	57	A7	88	V _{SS}	118	V _{SS}	148	V _{SS}	179	V _{DD}	210	DQ38	240	V _{DD} SPD
27	V _{SS}	58	V _{DD}	89	DQ34	119	SA0	149	DQ22	180	A8	211	DQ39	241	SA1
28	DQ18	59	A5	90	DQ35	120	SCL	150	DQ23	181	A6	212	V _{SS}	242	SDA
29	DQ19	60	A4	91	V _{SS}	121	SA2	151	V _{SS}	182	V _{DD}	213	DQ44	243	V _{SS}
30	V _{SS}	61	V _{DD}	92	DQ40	122	V _{TT}	152	DQ28	183	A3	214	DQ45	244	V _{TT}
31	DQ24	62	A2					153	DQ29	184	A1				



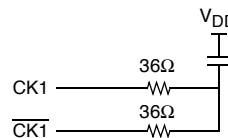
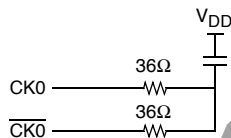
Block Diagram



Note: Unless otherwise noted, data resistor values are 15Ω ± 5%.

Block Diagram (Contd.)


Clock Wiring	
CK0/CK0	5 SDRAMs
CK1/CK1	4 SDRAMs

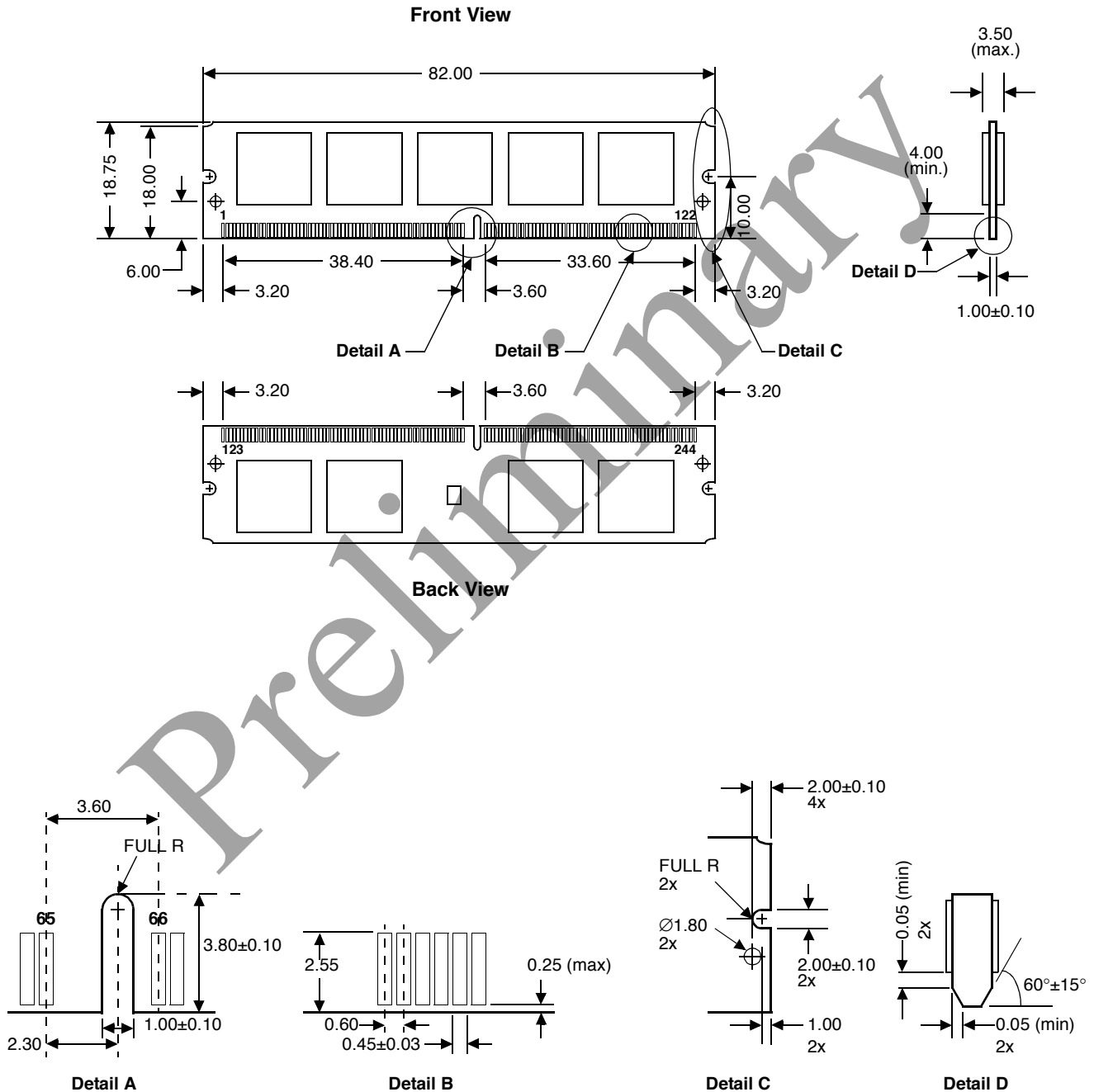

Notes:

1. All address, command and control signal lines are terminated through a 36Ω series resistor to V_{TT}.
2. Data bits may be swapped within a device. However, DQ/DQS/DM relationship must be maintained as shown on page 6.



Physical Dimensions

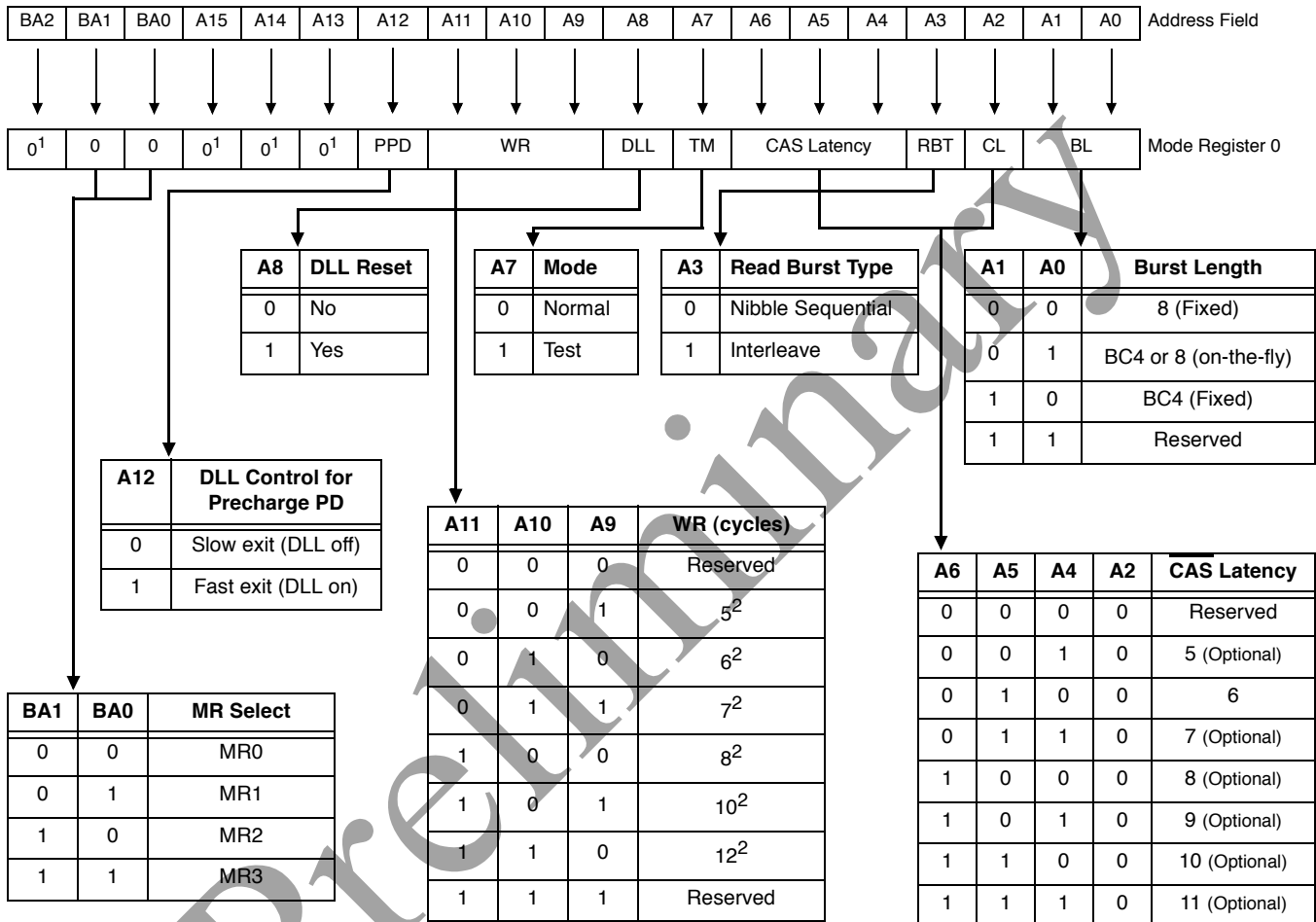
244-pin Mini-DIMM Module



(All dimensions are in millimeters with ±0.15mm tolerance unless specified otherwise.)

Mode Register (MR0) Table Definition

The mode register stores the data for controlling the various operating modes of DDR3 SDRAM. It controls CAS latency, burst length, burst chop, burst sequence, test mode, DLL reset, t_{WR} and various vendor specific options to make DDR3 SDRAM useful for various applications. The mode register is written by asserting low on \overline{CS} , \overline{RAS} , \overline{CAS} , \overline{WE} , BA0, BA1 and BA2 while controlling the state of address pins A0~A15.



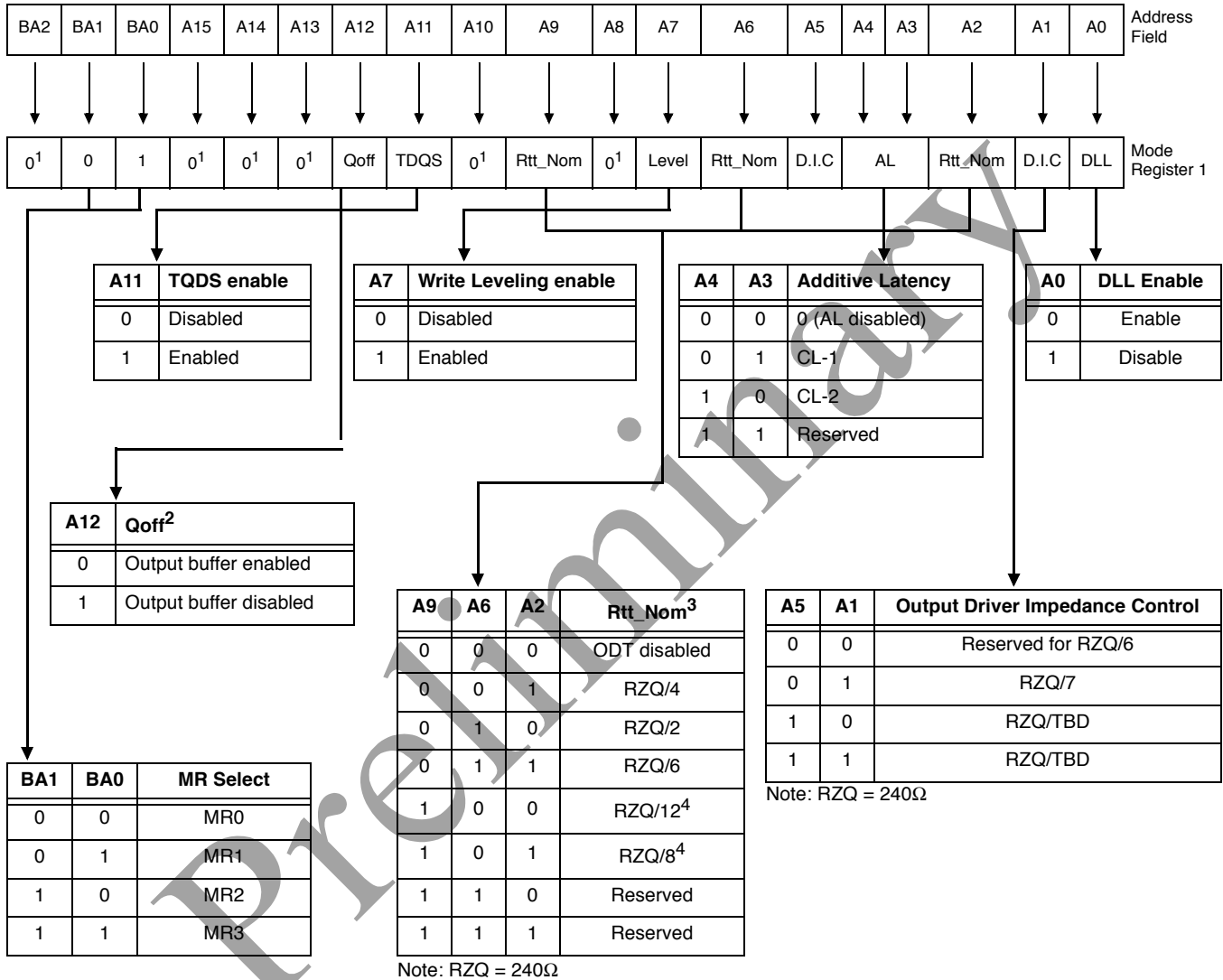
Notes:

- BA2 and A13~A15 are reserved for future use and must be programmed to 0 during MRS.
- WR(write recovery for autoprecharge)min in clock cycles is calculated by dividing t_{WR} (in ns) by t_{CK} (in ns) and rounding up to the next integer: $WR_{min}[\text{cycles}] = \text{Round-up}(t_{WR}[\text{ns}] / t_{CK}[\text{ns}])$. The WR value in the mode register must be programmed to be equal or larger than WR_{min} . The programmed WR value is used with t_{RP} to determine t_{DAL} .



Mode Register (MR1) Table Definition

The Mode Registers MR1 stores the data for enabling or disabling the DLL, output driver strength, Rtt_Nom impedance, additive latency, Write Leveling enable, TDQS enable and Qoff. The Mode Register 1 is written by asserting low on \overline{CS} , \overline{RAS} , \overline{CAS} , \overline{WE} , high on BA0 and low on BA1 and BA2, while controlling the state of address pins A0~A15.



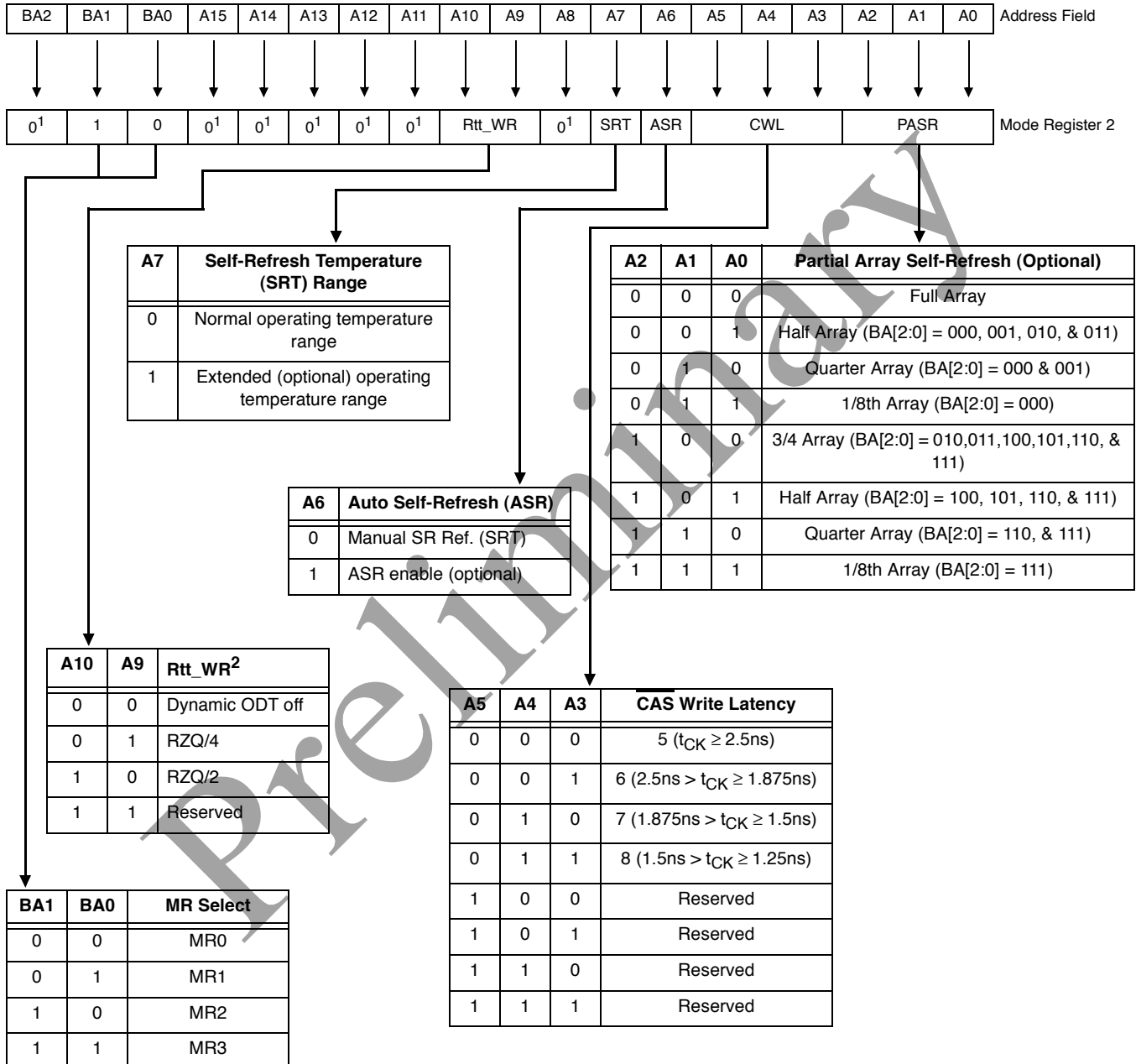
Notes:

1. BA2 and A8, A10, A13~A15 are reserved for future use and must be programmed to 0 during MRS.
2. Outputs disabled - DQs, DQSs, DQSs.
3. In Write Leveling Mode (MR1[bit7] = 1) with MR1[bit12] = 1, all Rtt_Nom settings are allowed; in Write Leveling Mode (MR1[bit7]=1) with MR1[bit12] = 0, only Rtt_Nom settings of RZQ/2, RZQ/4 and RZQ/6 are allowed.
4. If Rtt_Nom is used during Writes, only the values RZQ/2, RZQ/4 and RZQ/6 are allowed.



Mode Register (MR2) Table Definition

The Mode Registers MR2 stores the data for controlling refresh related features, Rtt_WR impedance, and CAS Write Latency. The Mode Register 2 is written by asserting low on \overline{CS} , \overline{RAS} , \overline{CAS} , \overline{WE} , high on BA1 and low on BA0 and BA2 while controlling the state of address pins A0~A15.

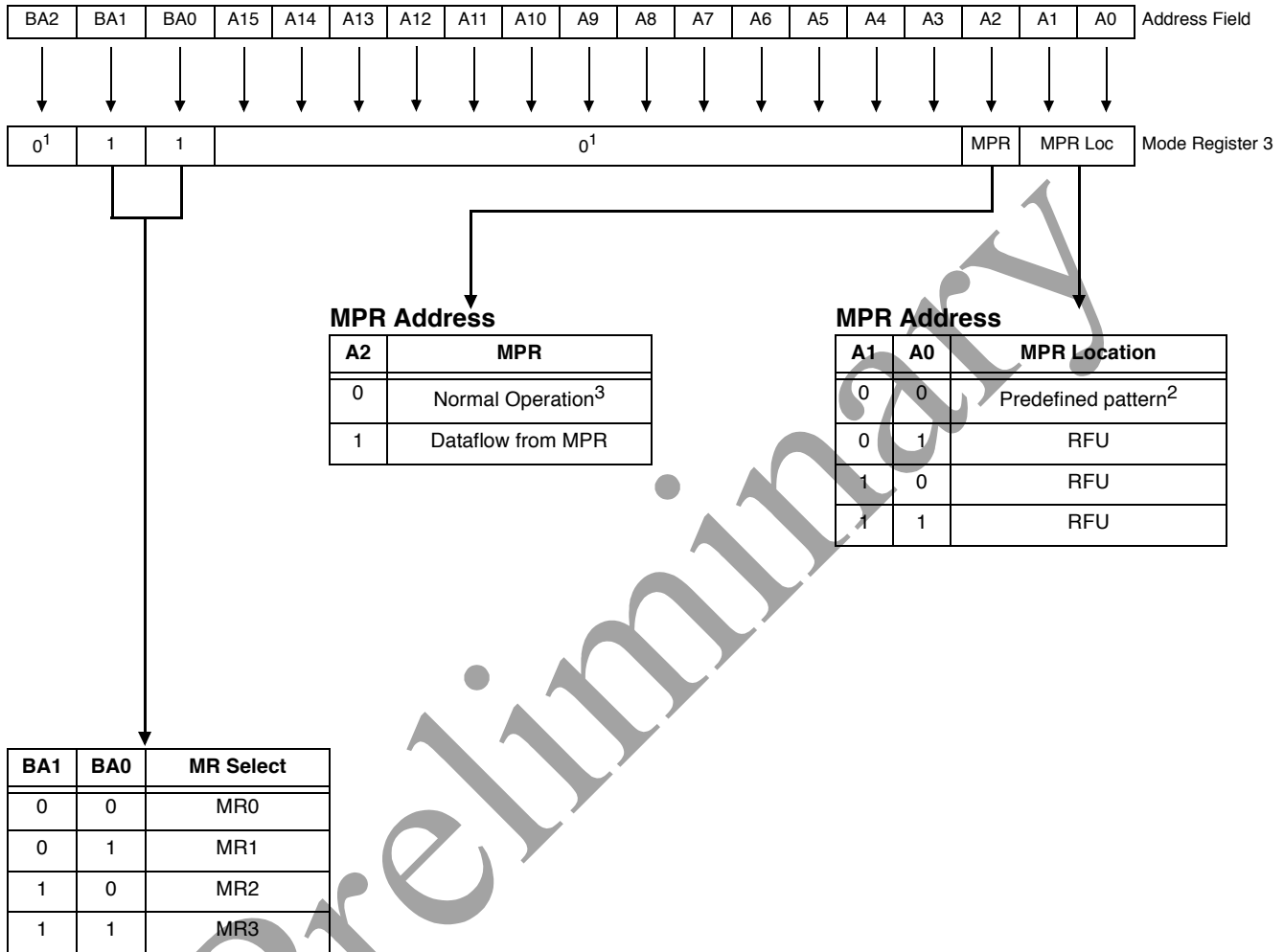


Notes:

- BA2, A8 and A11~A15 are reserved for future use and must be programmed to 0 during MRS.
- If Rtt_WR value can be applied during writes even when Rtt_Nom is disabled. During Write Leveling, Dynamic ODT is not available.

Mode Register (MR3) Table Definition

The Mode Register MR3 controls Multi-purpose registers. The Mode Register 3 is written by asserting low on \overline{CS} , \overline{RAS} , \overline{CAS} , \overline{WE} , high on BA1 and BA0, low on BA2 while controlling the state of address pins A0~A15.



Notes:

1. BA2, A3~A15 are reserved for future use and must be programmed to 0 during MRS.
2. The predefined pattern will be used for read synchronization.
3. When MPR control is set for normal operation (MR3 A[2] = 0), then MR3 A[1:0] will be ignored.

Command Truth Table

The following Truth Tables provide a general reference of available commands. For a more detailed description please refer to the device data sheets.

(a) Notes 1- 4 apply to the entire Command Truth Table.

(b) Note 5 applies to all Read/Write command.

[BA= Bank address, RA= row Address, CA = Column Address, \overline{BC} = Burst chop, X = Don't care, V = Valid]

Function	Abbreviation	CKE		CS	RAS	CAS	WE	BA0~BA2	A13~A15	A12/ \overline{BC}	A10/AP	A0-A9, A11	Notes
		Previous Cycle	Current Cycle										
Mode Register Set	MRS	H	H	L	L	L	L	BA	OP Code				
Refresh	REF	H	H	L	L	L	H	V	V	V	V	V	
Self-Refresh Entry	SRE	H	L	L	L	L	H	V	V	V	V	V	7, 9, 12
Self-Refresh Exit	SRX	L	H	H	V	V	V	V	V	V	V	V	7, 8, 9, 12
				L	H	H	H						
Single Bank Precharge	PRE	H	H	L	L	H	L	BA	V	V	L	V	
Precharge All Banks	PREA	H	H	L	L	H	L	V	V	V	H	V	
Bank Activate	ACT	H	H	L	L	H	H	BA	Row Address				
Write (Fixed BL8 or BC4)	WR	H	H	L	H	L	L	BA	RFU	V	L	CA	
Write (BC4, on the Fly)	WRS4	H	H	L	H	L	L	BA	RFU	L	L	CA	
Write (BL8, on the Fly)	WRS8	H	H	L	H	L	L	BA	RFU	H	L	CA	
Write with Auto-Precharge (Fixed BL8 or BC4)	WRA	H	H	L	H	L	L	BA	RFU	V	H	CA	
Write with Auto-Precharge (BC4, on the Fly)	WRAS4	H	H	L	H	L	L	BA	RFU	L	H	CA	
Write with Auto-Precharge (BL8, on the Fly)	WRAS8	H	H	L	H	L	L	BA	RFU	H	H	CA	
Read (Fixed BL8 or BC4)	RD	H	H	L	H	L	H	BA	RFU	V	L	CA	
Read (BC4, on the Fly)	RDS4	H	H	L	H	L	H	BA	RFU	L	L	CA	
Read (BL8, on the Fly)	RDS8	H	H	L	H	L	H	BA	RFU	H	L	CA	
Read with Auto-Precharge (Fixed BL8 or BC4)	RDA	H	H	L	H	L	H	BA	RFU	V	H	CA	
Read with Auto-Precharge (BC4, on the Fly)	RDAS4	H	H	L	H	L	H	BA	RFU	L	H	CA	
Read with Auto-Precharge (BL8, on the Fly)	RDAS8	H	H	L	H	L	H	BA	RFU	H	H	CA	
No Operation	NOP	H	H	L	H	H	H	V	V	V	V	V	10
Device Deselected	DES	H	H	H	X	X	X	X	X	X	X	X	11
Power-Down Entry	PDE	H	L	L	H	H	H	V	V	V	V	V	6, 12
				H	V	V	V						
Power-Down Exit	PDX	L	H	L	H	H	H	V	V	V	V	V	6, 12
				H	V	V	V						
ZQ Calibration Long	ZQCL	H	H	L	H	H	L	X	X	X	H	X	
ZQ Calibration Short	ZQCS	H	H	L	H	H	L	X	X	X	L	X	



Command Truth Table Notes:

1. All DDR3 SDRAM commands are defined by states of \overline{CS} , \overline{RAS} , \overline{CAS} , \overline{WE} , and CKE at the rising edge of the clock. The MSB of BA, RA and CA are device density and configuration dependant.
2. \overline{RESET} command is enabled when Low, which will be used only for asynchronous reset, so \overline{RESET} must be maintained HIGH during any function.
3. Bank addresses (BA) determine which bank is to be operated upon. For (E)MRS, BA selects an (Extended) Mode Register.
4. "V" means "H or L (but a defined logic level)" and "X" means either "defined or undefined (like floating) logic level".
5. Burst reads or writes cannot be terminated or interrupted and Fixed/on-the-Fly BL will be defined by the MRS.
6. The Power-Down Mode does not perform any refresh operation.
7. The state of ODT does not affect the states described in this table. The ODT function is not available during Self-Refresh.
8. Self-Refresh Exit is asynchronous.
9. V_{REF} (Both V_{REFDQ} and V_{REFCA}) must be maintained during Self-Refresh operation.
10. The No Operation command should be used in cases when the DDR3 SDRAM is in an idle or wait state. The purpose of the No Operation command (NOP) is to prevent the DDR3 SDRAM from registering any unwanted commands between operations. A No Operation command will not terminate a previous operation that is still executing, such as a burst read and write cycle.
11. The Deselect command performs the same function as No Operation command.
12. Refer to the CKE Truth Table for more detail with CKE transition.

Preliminary



CKE Truth Table

- (a) Notes 1-7 apply to the entire CKE Truth Table.
(b) CKE low is allowed only if tMRD and tMOD are satisfied.

Current State	CKE		Command (N) ³ RAS, CAS, WE, CS	Action (N) ³	Notes
	Previous Cycle (N-1)	Current Cycle (N)			
Power-Down	L	L	X	Maintain Power-Down	14, 15
	L	H	Deselect or NOP	Power-Down Exit	11, 14
Self-Refresh	L	L	X	Maintain Self-Refresh	15, 16
	L	H	Deselect or NOP	Self-Refresh Exit	8, 12, 16
Bank Activate	H	L	Deselect or NOP	Active Power-Down Entry	11, 13, 14
Reading	H	L	Deselect or NOP	Power-Down Entry	11, 13, 14, 17
Writing	H	L	Deselect or NOP	Power-Down Entry	11, 13, 14, 17
Precharging	H	L	Deselect or NOP	Power-Down Entry	11, 13, 14, 17
Refreshing	H	L	Deselect or NOP	Precharge Power-Down Entry	11
All Banks Idle	H	L	Deselect or NOP	Precharge Power-Down Entry	11, 13, 14, 18
		L	Refresh	Self-Refresh	9, 13, 18
For more details with all signals, see Command Truth Table on the previous pages.					10

Notes:

- CKE (N) is the logic state of CKE at clock edge N; CKE (N-1) was the state of CKE at the previous clock edge.
- Current state is defined as the state of the DDR3 SDRAM immediately prior to clock edge N.
- COMMAND (N) is the command registered at clock edge N, and ACTION (N) is a result of COMMAND (N), ODT is not included here.
- All states and sequences not shown are illegal or reserved unless explicitly described elsewhere in this document.
- The state of ODT does not affect the states described in this table. The ODT function is not available during Self-Refresh.
- CKE must be registered with the same value on tCKEmin consecutive positive clock edges. CKE must remain at the valid input level the entire time it takes to achieve the tCKEmin clocks of registration. Thus, after any CKE transition, CKE may not transition from its valid level during the time period of tIS + tCKEmin + tIH.
- Deselect and NOP are defined in the Command Truth Table.
- On Self-Refresh Exit, Deselect or NOP commands must be issued on every clock edge occurring during the tXS period. Read or ODT commands may be issued only after tXSDLL is satisfied.
- Self-Refresh mode can only be entered from the All Banks Idle state.
- Must be a legal command as defined in the Command Truth Table.
- Valid commands for Power-Down Entry and Exit are NOP and Deselect only.
- Valid commands for Self-Refresh Exit are NOP and Deselect only.
- Self-Refresh can not be entered during Read or Write operations.
- The Power-Down does not perform any refresh operations.
- “X” means “don’t care” (including floating around VREF) in Self-Refresh and Power-Down. It also applies to Address pins.
- VREF (Both VREFDQ and VREFCA) must be maintained during Self-Refresh operation.
- If all banks are closed at the conclusion of the read, write or precharge command, then Precharge Power-Down is entered, otherwise Active Power-Down is entered.
- “Idle state” is defined as all banks are closed (tRP, tDAL, etc. satisfied), no data bursts are in progress, CKE is high, and all timings from previous operations are satisfied (tMRD, tMOD, tRFC, tZQinit, tZQoper, tZQCS, etc.) as well as all Self-Refresh exit and Power-Down Exit parameters are satisfied (tXS, tXP, tXPDLL, etc.).



Absolute Maximum Ratings

Absolute Maximum DC Ratings

Symbol	Parameter	Rating	Units	Notes
V _{DD}	Voltage on V _{DD} relative to V _{SS}	-0.4 ~ 1.975	V	1, 3
V _{DDQ}	Voltage on V _{DDQ} relative to V _{SS}	-0.4 ~ 1.975	V	1, 3
V _{IN} , V _{OUT}	Voltage on any pin relative to V _{SS}	-0.4 ~ 1.975	V	1
V _{DDSPD}	Voltage on V _{DDSPD} relative to V _{SS}	1.7 ~ 3.6	V	1
T _{STG}	Storage Temperature	-50 to +100	°C	1, 2

Notes:

- Stresses greater than those listed under “Absolute Maximum Ratings” may cause permanent damage to the device. This is a stress rating only and functional operation of the device at these or any other conditions above those indicated in the operational sections of this specification is not implied. Exposure to absolute maximum rating conditions for extended periods may affect reliability.
- Storage Temperature is the case surface temperature on the center/top side of the DRAM.
- V_{DD} and V_{DDQ} must be within 300 mV of each other at all times and V_{REF} must be not greater than 0.6*V_{DDQ}. When V_{DD} and V_{DDQ} are less than 500 mV; V_{REF} may be equal to or less than 300 mV.

Operating Temperature Range

Symbol	Parameter	Range	Units	Notes
T _{OPER}	Normal Operating Temperature Range (Case)	0 to 85	°C	1, 2
	Extended Operating Temperature Range (Optional)	85 to 95	°C	1, 3

Notes:

- Operating Temperature T_{OPER} is the case surface temperature on the center/top side of the DRAM.
- The Normal Temperature Range specifies the temperatures where all DRAM specifications will be supported. During operation, the DRAM case temperature must be maintained between 0°C and 85°C under all operating conditions.
- Some applications require operation of the DRAM in the Extended Temperature Range between 85°C and 95°C case temperature. Full specifications are supported in this range, but the following additional conditions apply:
 - Refresh commands must be doubled in frequency, therefore reducing the Refresh interval t_{REFI} to 3.9µs. It is also possible to specify a component with 1X refresh (t_{REFI} to 7.8µs) in the Extended Temperature Range. Please refer to the SPD for option availability.
 - If Self-Refresh operation is required in the Extended Temperature Range, then it is mandatory to either use the Manual Self-Refresh mode with Extended Temperature Range capability (MR2 A6 = 0b and MR2 A7 = 1b) or enable the optional Auto Self-Refresh mode (MR2 A6 = 1b and MR2 A7 = 0b). Please refer to the SPD for option availability.

Recommended DC Operating Conditions

Symbol	Parameter	Rating			Units	Notes
		Min	Typ	Max		
V _{DD}	Supply Voltage	1.425	1.5	1.575	V	1, 2
V _{DDQ}	Supply Voltage for Output	1.425	1.5	1.575	V	1
V _{DDSPD}	SPD Supply Voltage	3.0	3.3	3.6	V	
V _{TT}	SPD Supply Voltage	0.7125	0.75	0.7875	V	3
V _{SS}	Ground	0	0	0	V	

Notes:

- Under all conditions, V_{DDQ} must be less than or equal to V_{DD}.
- V_{DDQ} tracks with V_{DD}. AC parameters are measured with V_{DD} and V_{DDQ} tied together.
- V_{TT} = V_{DDQ}/2

AC and DC Logic Input Levels for Single-Ended Signals

Symbol	Parameter	DDR3-800, 1066, & 1333		Units	Notes
		Min	Max		
V _{IH(DC)}	DC input logic high	V _{REF} + 0.100	V _{DD}	V	1
V _{IL(DC)}	DC input logic low	V _{SS}	V _{REF} - 0.100	V	1
V _{IH(AC)}	AC input logic high	V _{REF} + 0.175	-	V	1
V _{IL(AC)}	AC input logic low	-	V _{REF} - 0.175	V	1

Notes:

- For DQ and DM, V_{REF} = V_{REFDQ}. For input only pins except RESET#, V_{REF} = V_{REFCA}.
- The ac peak noise on V_{REF} may not allow V_{REF} to deviate from V_{REF(DC)} by more than ±1% V_{DD} (for reference: approx. ±15mV).
- For reference: approx. V_{DD}/2 ± 15mV.



Differential swing requirements for clock ($\overline{CK/CK}$) and strobe ($\overline{DQS/DQS}$)

Symbol	Parameter	DDR3-800, 1066, & 1333		Units	Notes
		Min	Max		
V_{IHDIFF}	Differential input logic high	0.200	Note 3	V	1
V_{ILDIFF}	Differential input logic high	Note 3	-0.200	V	1
$V_{IHDIFF(AC)}$	AC input logic high	$2 * (V_{IH(AC)} - V_{REF})$	Note 3	V	2
$V_{ILDIFF(AC)}$	AC input logic low	Note 3	$2 * (V_{REF} - V_{IL(AC)})$	V	2

Notes:

- Used to define a differential signal slew-rate.
- For $\overline{CK/CK}$, use $V_{IH}/V_{IL(AC)}$ of ADD/CMD and V_{REFCA} ; for $\overline{DQS/DQS}$, use $V_{IH}/V_{IL(AC)}$ of DQs and V_{REFDQ} ; if a reduced AC-high or AC-low level is used for a signal group, then the reduced level applies also here.
- These values are not defined, however the single-ended signals \overline{CK} , \overline{CK} , \overline{DQS} , \overline{DQS} need to be within the respective limits ($V_{IH(DC)max}$, $V_{IL(DC)min}$) for single-ended signals as well as the limitations for overshoot and undershoot.

Single-ended Input Slew Rate Definition

Description	Measured		Defined by	Applicable for
	from	to		
Input slew rate for rising edge	V_{REF}	$V_{IL(AC)min}$	$\frac{V_{IH(AC)min} - V_{REF}}{\Delta TRS}$	Setup (t_{IS} , t_{DS})
Input slew rate for falling edge	V_{REF}	$V_{IL(AC)max}$	$\frac{V_{REF} - V_{IL(AC)max}}{\Delta TFS}$	
Input slew rate for rising edge	$V_{IL(DC)max}$	V_{REF}	$\frac{V_{REF} - V_{IL(DC)max}}{\Delta TFH}$	Hold (t_{IH} , t_{DH})
Input slew rate for falling edge	$V_{IL(DC)min}$	V_{REF}	$\frac{V_{IH(DC)min} - V_{REF}}{\Delta TRH}$	



Input/Output Capacitance

Speed Bin		DDR3-800		DDR3-1066		DDR3-1333		Units	Notes
Parameter	Symbol	min	max	min	max	min	max		
Input/output capacitance (DQ, DM, \overline{DQS} , \overline{DQS} , TDQS, \overline{TDQS})	C_{IO}	1.5	3.0	1.5	2.7	1.5	2.5	pF	1, 2
Input/output capacitance delta, (DQ, DM, \overline{DQS} , \overline{DQS} , TDQS, \overline{TDQS})	C_{DIO}	-0.5	0.3	-0.5	0.3	-0.5	0.3	pF	2, 10
Input/output capacitance delta (DQS and \overline{DQS})	C_{DDQS}	0	0.2	0	0.2	0	0.15	pF	2, 4
Input capacitance, CK and \overline{CK}	C_{CK}	4	8	4	8	4	7	pF	2
Input capacitance delta, CK and \overline{CK}	C_{DCK}	0	0.75	0	0.75	0	0.75	pF	2, 3
Input capacitance, (ADD, CMD, CTRL input-only pins)	C_I	6.75	13.5	6.75	13.5	6.75	11.7	pF	2, 5
Input capacitance delta, (All ADD/CMD input-only pins)	$C_{DI_ADD_CMD}$	-4.5	4.5	-4.5	4.5	-3.6	3.6	pF	2, 8, 9
Input capacitance delta, (All CTRL input-only pins)	C_{DI_CTRL}	-4.5	2.7	-4.5	2.7	-3.6	1.8	pF	2, 6, 7

Notes:

1. Although the DM, TDQS and \overline{TDQS} pins have different functions, the loading matches DQ and DQS.
2. This parameter is not subject to production test. It is verified by design and characterization.
3. Absolute value of $C_{CK} - C_{\overline{CK}}$
4. Absolute value of $C_{IO}(DQS) - C_{IO}(\overline{DQS})$
5. C_I applies to ODT, \overline{CS} , CKE, A0-A15, BA0-BA2, \overline{RAS} , \overline{CAS} , \overline{WE} .
6. C_{DI_CTRL} applies to ODT, \overline{CS} and CKE
7. $C_{DI_CTRL} = C_I(CTRL) - 0.5 * (C_I(CK) + C_I(\overline{CK}))$
8. $C_{DI_ADD_CMD}$ applies to A0-A15, BA0-BA2, \overline{RAS} , \overline{CAS} and \overline{WE}
9. $C_{DI_ADD_CMD} = C_I(ADD_CMD) - 0.5 * (C_I(CK) + C_I(\overline{CK}))$
10. $C_{DIO} = C_{IO}(DQ,DM) - 0.5 * (C_{IO}(DQS) + C_{IO}(\overline{DQS}))$



IDD and IDDQ Measurement-Loop Patterns Timing

Speed Bin	DDR3-800		DDR3-1066			DDR3-1333		Units
	5-5-5	6-6-6	6-6-6	7-7-7	8-8-8	8-8-8	9-9-9	
t _{CKmin} (IDD)	2.5		1.875			1.5		ns
CL(IDD)	5	6	6	7	8	8	9	nCK
nRCD	5	6	6	7	8	8	9	nCK
nRC	20	21	26	27	28	32	33	nCK
nRAS	15		20			24		nCK
nRP	5	6	6	7	8	8	9	nCK
nFAW	16		20			20		nCK
nRRD	4		6			5		nCK
nRFC	64		86			107		nCK

Definitions for IDD Measurement Conditions

- “0” and “LOW” is defined as $V_{IN} \leq V_{ILAC(max)}$.
- “1” and “HIGH” is defined as $V_{IN} \geq V_{IHAC(min)}$.
- “MID-LEVEL” is defined as inputs that are $V_{REF} = V_{DD}/2$.
- Timings used for IDD and IDDQ Measurement-Loop Patterns are provided in IDD and IDDQ Timings on page 20.
- Basic IDD and IDDQ Measurement Conditions are described in IDD Measurement Conditions on pages 21-23.
- Detailed IDD and IDDQ Measurement-Loop Patterns are described in IDD Measurement-Loop Patterns on pages 24-29.
- IDD Measurements are done after properly initializing the DDR3 SDRAM. This includes but is not limited to setting:
 - RON = RZQ/7 (34 Ohm in MR1);
 - Qoff = 0_B (Output Buffer enabled in MR1);
 - RTT_Nom = RZQ/6 (40 Ohm in MR1);
 - RTT_Wr = RZQ/2 (120 Ohm in MR2);
 - TDQS Feature disabled in MR1.
- **Attention:** The IDD and IDDQ Measurement-Loop Patterns need to be executed at least one time before actual IDD or IDDQ measurement is started.
- Define $\underline{D} = \{\overline{CS}, \overline{RAS}, \overline{CAS}, \overline{WE}\} = \{\text{HIGH}, \text{LOW}, \text{LOW}, \text{LOW}\}$
- Define $\overline{D} = \{\overline{CS}, \overline{RAS}, \overline{CAS}, \overline{WE}\} = \{\text{HIGH}, \text{HIGH}, \text{HIGH}, \text{HIGH}\}$



IDD Measurement Conditions

Symbol	Description	Conditions
I _{DD0}	Operating One Bank Active-Precharge Current	CKE: High; External clock: On; tCK, nRC, nRAS, CL: See IDD and IDDQ Timings on page 20; BL: 8 ¹ ; AL: 0; \overline{CS} : High between ACT and PRE; Command, Address, Bank Address Inputs: partially toggling according to IDD0 Measurement-Loop Pattern on page 24; Data I/O: MID-LEVEL; DM: stable at 0; Bank Activity: Cycling with one bank active at a time: 0,0,1,1,2,2,... (See IDD0 Measurement-Loop Pattern on page 24); Output Buffer and RTT: Enabled in Mode Registers ² ; ODT Signal: stable at 0; Pattern Details: See IDD0 Measurement-Loop Pattern on page 24.
I _{DD1}	Operating One Bank Active-Read-Precharge Current	CKE: High; External clock: On; tCK, nRC, nRAS, nRCD, CL: See IDD and IDDQ Timings on page 20; BL: 8 ^{1, 6} ; AL: 0; \overline{CS} : High between ACT, RD and PRE; Command, Address, Bank Address Inputs, Data I/O: partially toggling according to IDD1 Measurement-Loop Pattern on page 25; DM: stable at 0; Bank Activity: Cycling with one bank active at a time: 0,0,1,1,2,2,... (See IDD1 Measurement-Loop Pattern on page 25); Output Buffer and RTT: Enabled in Mode Registers ² ; ODT Signal: stable at 0; Pattern Details: See IDD1 Measurement-Loop Pattern on page 25.
I _{DD2P0}	Precharge Power-Down Current Slow Exit	CKE: Low; External clock: On; tCK, CL: See IDD and IDDQ Timings on page 20; BL: 8 ¹ ; AL: 0; \overline{CS} : stable at 1; Command, Address, Bank Address Inputs: stable at 0; Data I/O: MID-LEVEL; DM: stable at 0; Bank Activity: all banks closed; Output Buffer and RTT: Enabled in Mode Registers ² ; ODT Signal: stable at 0; Precharge Power Down Mode: Slow Exit ³ .
I _{DD2P1}	Precharge Power-Down Current Fast Exit	CKE: Low; External clock: On; tCK, CL: See IDD and IDDQ Timings on page 20; BL: 8 ¹ ; AL: 0; \overline{CS} : stable at 1; Command, Address, Bank Address Inputs: stable at 0; Data I/O: MID-LEVEL; DM: stable at 0; Bank Activity: all banks closed; Output Buffer and RTT: Enabled in Mode Registers ² ; ODT Signal: stable at 0; Precharge Power Down Mode: Fast Exit ³ .
I _{DD2Q}	Precharge Quiet Standby Current	CKE: High; External clock: On; tCK, CL: See IDD and IDDQ Timings on page 20; BL: 8 ¹ ; AL: 0; \overline{CS} : stable at 1; Command, Address, Bank Address Inputs: stable at 0; Data I/O: MID-LEVEL; DM: stable at 0; Bank Activity: all banks closed; Output Buffer and RTT: Enabled in Mode Registers ² ; ODT Signal: stable at 0.
I _{DD2N}	Precharge Standby Current	CKE: High; External clock: On; tCK, CL: See IDD and IDDQ Timings on page 20; BL: 8 ¹ ; AL: 0; \overline{CS} : stable at 1; Command, Address, Bank Address Inputs: partially toggling according to IDD2N and IDD3N Measurement-Loop Pattern on page 26; Data I/O: MID-LEVEL; DM: stable at 0; Bank Activity: all banks closed; Output Buffer and RTT: Enabled in Mode Registers ² ; ODT Signal: stable at 0; Pattern Details: See IDD2N and IDD3N Measurement-Loop Pattern on page 26.



IDD Measurement Conditions (Contd.)

Symbol	Description	Conditions
I _{DD2NT}	Precharge Standby ODT Current	CKE: High; External clock: On; tCK, CL: See IDD and IDDQ Timings on page 20; BL: 8 ¹ ; AL: 0; \overline{CS} : stable at 1; Command, Address, Bank Address Inputs: partially toggling according to IDD2NT Measurement-Loop Pattern on page 26; Data I/O: MID-LEVEL; DM: stable at 0; Bank Activity: all banks closed; Output Buffer and RTT: Enabled in Mode Registers ² ; ODT Signal: toggling according to IDD2NT Measurement-Loop Pattern on page 26; Pattern Details: See IDD2NT Measurement-Loop Pattern on page 26.
I _{DD3P}	Active Power Down Current	CKE: Low; External clock: On; tCK, CL: See IDD and IDDQ Timings on page 20; BL: 8 ¹ ; AL: 0; \overline{CS} : stable at 1; Command, Address, Bank Address Inputs: stable at 0; Data I/O: MID-LEVEL; DM: stable at 0; Bank Activity: all banks open; Output Buffer and RTT: Enabled in Mode Registers ² ; ODT Signal: stable at 0.
I _{DD3N}	Active Standby Current	CKE: High; External clock: On; tCK, CL: See IDD and IDDQ Timings on page 20; BL: 8 ¹ ; AL: 0; \overline{CS} : stable at 1; Command, Address, Bank Address Inputs: partially toggling according to IDD2N and IDD3N Measurement-Loop Pattern on page 26; Data I/O: MID-LEVEL; DM: stable at 0; Bank Activity: all banks open; Output Buffer and RTT: Enabled in Mode Registers ² ; ODT Signal: stable at 0; Pattern Details: See IDD2N and IDD3N Measurement-Loop Pattern on page 26.
I _{DD4R}	Operating Burst Read Current	CKE: High; External clock: On; tCK, CL: See IDD and IDDQ Timings on page 20; BL: 8 ^{1, 6} ; AL: 0; \overline{CS} : High between RD; Command, Address, Bank Address Inputs: partially toggling according to IDD4R Measurement-Loop Pattern on page 27; Data I/O: seamless read data burst with different data between one burst and the next one according to IDD4R Measurement-Loop Pattern on page 27; DM: stable at 0; Bank Activity: all banks open, RD commands cycling through banks: 0,0,1,1,2,2,... (See IDD4R Measurement-Loop Pattern on page 27); Output Buffer and RTT: Enabled in Mode Registers ² ; ODT Signal: stable at 0; Pattern Details: See IDD4R Measurement-Loop Pattern on page 27.
I _{DD4W}	Operating Burst Write Current	CKE: High; External clock: On; tCK, CL: See IDD and IDDQ Timings on page 20; BL: 8 ¹ ; AL: 0; \overline{CS} : High between WR; Command, Address, Bank Address Inputs: partially toggling according to IDD4W Measurement-Loop Pattern on page 27; Data I/O: seamless write data burst with different data between one burst and the next one according to IDD4W Measurement-Loop Pattern on page 27; DM: stable at 0; Bank Activity: all banks open, WR commands cycling through banks: 0,0,1,1,2,2,... (See IDD4W Measurement-Loop Pattern on page 27); Output Buffer and RTT: Enabled in Mode Registers ² ; ODT Signal: stable at HIGH; Pattern Details: See IDD4W Measurement-Loop Pattern on page 27.



IDD Measurement Conditions (Contd.)

Symbol	Description	Conditions
I _{DD5B}	Burst Refresh Current	CKE: High; External clock: On; tCK, CL, nRFC: See IDD and IDDQ Timings on page 20; BL: 8 ¹ ; AL: 0; \overline{CS} : High between REF; Command, Address, Bank Address Inputs: partially toggling according to IDD5B Measurement-Loop Pattern on page 28; Data I/O: MID-LEVEL; DM: stable at 0; Bank Activity: REF command every nRFC (See IDD5B Measurement-Loop Pattern on page 28); Output Buffer and RTT: Enabled in Mode Registers ² ; ODT Signal: stable at 0; Pattern Details: See IDD5B Measurement-Loop Pattern on page 28.
I _{DD6}	Self-Refresh Current: Normal Temperature Range	T _{CASE} : 0 - 85°C; Auto Self-Refresh (ASR): Disabled ⁴ ; Self-Refresh Temperature Range (SRT): Normal ⁵ ; CKE: Low; External clock: Off; CK and CK#: LOW; CL: See IDD and IDDQ Timings on page 20; BL: 8 ¹ ; AL: 0; \overline{CS} , Command, Address, Bank Address, Data I/O: MID-LEVEL; DM: stable at 0; Bank Activity: Self-Refresh operation; Output Buffer and RTT: Enabled in Mode Registers ² ; ODT Signal: MID-LEVEL.
I _{DD6ET}	Self-Refresh Current: Extended Temperature Range	T _{CASE} : 85 - 95°C; Auto Self-Refresh (ASR): Disabled ⁴ ; Self-Refresh Temperature Range (SRT): Extended ⁵ ; CKE: Low; External clock: Off; CK and CK#: LOW; CL: See IDD and IDDQ Timings on page 20; BL: 8 ¹ ; AL: 0; \overline{CS} , Command, Address, Bank Address, Data I/O: MID-LEVEL; DM: stable at 0; Bank Activity: Extended Temperature Self-Refresh operation; Output Buffer and RTT: Enabled in Mode Registers ² ; ODT Signal: MID-LEVEL.
I _{DD7}	All Bank Interleave Read Current	CKE: High; External clock: On; tCK, nRC, nRAS, nRCD, nRRD, nFAW, CL: See IDD and IDDQ Timings on page 20; BL: 8 ^{1, 6} ; AL: CL-1; \overline{CS} : High between ACT and RDA; Command, Address, Bank Address Inputs: partially toggling according to IDD7 Measurement-Loop Pattern on page 28; Data I/O: read data bursts with different data between one burst and the next one according to IDD7 Measurement-Loop Pattern on page 28; DM: stable at 0; Bank Activity: two times interleaved cycling through banks (0, 1,...7) with different addressing, See IDD7 Measurement-Loop Pattern on page 28; Output Buffer and RTT: Enabled in Mode Registers ² ; ODT Signal: stable at 0; Pattern Details: See IDD7 Measurement-Loop Pattern on page 28.

Notes:

1. Burst Length: BL8 fixed by MRS: set MR0 A[1,0]=00B.
2. Output Buffer Enable: set MR1 A[12] = 0B; set MR1 A[5,1] = 01B; RTT_Nom enable: set MR1 A[9,6,2] = 011B; RTT_Wr enable: set MR2 A[10,9] = 10B.
3. Precharge Power Down Mode: set MR0 A[12] = 0B for Slow Exit or MR0 A[12]=1B for Fast Exit.
4. Auto Self-Refresh (ASR): set MR2 A[6] = 0B to disable or 1B to enable feature.
5. Self-Refresh Temperature Range (SRT): set MR2 A[7] = 0B for normal or 1B for extended temperature range.
6. Read Burst Type: Nibble Sequential, set MR0 A[3] = 0B.



IDD Measurement Conditions (Contd.)

IDD0 Measurement-Loop Pattern¹

CK, CK	CKE	Sub-Loop	Cycle Number	Command	CS	RAS	CAS	WE	ODT	BA[2:0]	A[15:11]	A[10]	A[9:7]	A[6:3]	A[2:0]	Data ²		
toggling	Static High	0	0	ACT	0	0	1	1	0	0	00	0	0	0	0	-		
			1, 2	D, D	1	0	0	0	0	0	0	00	0	0	0	0	-	
			3, 4	\bar{D}, \bar{D}	1	1	1	1	0	0	0	00	0	0	0	0	-	
			...	Repeat pattern 1-4 until nRAS - 1. Truncate if necessary														
			nRAS	PRE	0	0	1	0	0	0	0	00	0	0	0	0	-	
			...	Repeat pattern 1-4 until nRC - 1. Truncate if necessary														
			1*nRC + 0	ACT	0	0	1	1	0	0	0	00	0	0	F	0	-	
			1*nRC + 1, 2	D, D	1	0	0	0	0	0	0	0	00	0	0	F	0	-
			1*nRC + 3, 4	\bar{D}, \bar{D}	1	1	1	1	0	0	0	0	00	0	0	F	0	-
			...	Repeat pattern nRC + 1-4 until 1*nRC + nRAS - 1. Truncate if necessary														
			1*nRC + nRAS	PRE	0	0	1	0	0	0	0	00	0	0	F	0	-	
			...	Repeat pattern nRC + 1-4 until 2*nRC - 1. Truncate if necessary														
		1	2*nRC	Repeat Sub-Loop 0, but BA[2:0] = 1														
		2	4*nRC	Repeat Sub-Loop 0, but BA[2:0] = 2														
		3	6*nRC	Repeat Sub-Loop 0, but BA[2:0] = 3														
		4	8*nRC	Repeat Sub-Loop 0, but BA[2:0] = 4														
		5	10*nRC	Repeat Sub-Loop 0, but BA[2:0] = 5														
6	12*nRC	Repeat Sub-Loop 0, but BA[2:0] = 6																
7	14*nRC	Repeat Sub-Loop 0, but BA[2:0] = 7																

Notes:

- DM must be driven LOW all the time. DQS, \bar{DQS} are MID-LEVEL.
- DQ signals are MID-LEVEL.



IDD Measurement Conditions (Contd.)

IDD1 Measurement-Loop Pattern¹

CK, CK	CKE	Sub-Loop	Cycle Number	Command	CS	RAS	CAS	WE	ODT	BA[2:0]	A[15:11]	A[10]	A[9:7]	A[6:3]	A[2:0]	Data ²		
toggling	Static High	0	0	ACT	0	0	1	1	0	0	00	0	0	0	0	-		
			1-2	D, D	1	0	0	0	0	0	0	00	0	0	0	0	-	
			3-4	$\overline{D}, \overline{D}$	1	1	1	1	0	0	0	00	0	0	0	0	-	
			...	Repeat pattern 1-4 until nRCD - 1. Truncate if necessary														
			nRCD	RD	0	1	0	1	0	0	0	00	0	0	0	0	00000000	
			...	Repeat pattern 1-4 until nRAS - 1. Truncate if necessary														
			nRAS	PRE	0	0	1	0	0	0	0	00	0	0	0	0	-	
			...	Repeat pattern 1-4 until nRC - 1. Truncate if necessary														
			1*nRC + 0	ACT	0	0	1	1	0	0	00	0	0	F	0	-		
			1*nRC + 1-2	D, D	1	0	0	0	0	0	00	0	0	F	0	-		
			1*nRC + 3-4	$\overline{D}, \overline{D}$	1	1	1	1	0	0	00	0	0	F	0	-		
			...	Repeat pattern nRC + 1-4 until 1*nRC + nRCD - 1. Truncate if necessary														
			1*nRC + nRCD	RD	0	1	0	1	0	0	00	0	0	F	0	00110011		
			...	Repeat pattern nRC + 1-4 until 1*nRC + nRAS - 1. Truncate if necessary														
		1*nRC + nRAS	PRE	0	0	1	0	0	0	00	0	0	F	0	-			
		...	Repeat pattern nRC + 1-4 until 2*nRC - 1. Truncate if necessary															
		1	2*nRC	Repeat Sub-Loop 0, but BA[2:0] = 1														
		2	4*nRC	Repeat Sub-Loop 0, but BA[2:0] = 2														
		3	6*nRC	Repeat Sub-Loop 0, but BA[2:0] = 3														
		4	8*nRC	Repeat Sub-Loop 0, but BA[2:0] = 4														
		5	10*nRC	Repeat Sub-Loop 0, but BA[2:0] = 5														
6	12*nRC	Repeat Sub-Loop 0, but BA[2:0] = 6																
7	14*nRC	Repeat Sub-Loop 0, but BA[2:0] = 7																

Notes:

- DM must be driven LOW all the time. DQS, \overline{DQS} are used according to RD Commands, otherwise MID-LEVEL.
- Burst Sequence driven on each DQ signal by Read Command. Outside burst operation, DQ signals are MID-LEVEL.



IDD Measurement Conditions (Contd.)

IDD2N and IDD3N Measurement-Loop Pattern¹

CK, CK	CKE	Sub-Loop	Cycle Number	Command	CS	RAS	CAS	WE	ODT	BA[2:0]	A[15:11]	A[10]	A[9:7]	A[6:3]	A[2:0]	Data ²	
toggling	Static High	0	0	D	1	0	0	0	0	0	00	0	0	0	0	-	
			1	D	1	0	0	0	0	0	0	00	0	0	0	0	-
			2	D	1	1	1	1	0	0	0	00	0	0	F	0	-
			3	D	1	1	1	1	0	0	0	00	0	0	F	0	-
		1	4-7	Repeat Sub-Loop 0, but BA[2:0] = 1													
		2	8-11	Repeat Sub-Loop 0, but BA[2:0] = 2													
		3	12-15	Repeat Sub-Loop 0, but BA[2:0] = 3													
		4	16-19	Repeat Sub-Loop 0, but BA[2:0] = 4													
		5	20-23	Repeat Sub-Loop 0, but BA[2:0] = 5													
		6	24-27	Repeat Sub-Loop 0, but BA[2:0] = 6													
7	28-31	Repeat Sub-Loop 0, but BA[2:0] = 7															

Notes:

- DM must be driven LOW all the time. DQS, \overline{DQS} are MID-LEVEL.
- DQ signals are MID-LEVEL.

IDD2NT Measurement-Loop Pattern¹

CK, CK	CKE	Sub-Loop	Cycle Number	Command	CS	RAS	CAS	WE	ODT	BA[2:0]	A[15:11]	A[10]	A[9:7]	A[6:3]	A[2:0]	Data ²	
toggling	Static High	0	0	D	1	0	0	0	0	0	00	0	0	0	0	-	
			1	D	1	0	0	0	0	0	0	00	0	0	0	0	-
			2	D	1	1	1	1	0	0	0	00	0	0	F	0	-
			3	D	1	1	1	1	0	0	0	00	0	0	F	0	-
		1	4-7	Repeat Sub-Loop 0, but ODT = 0 and BA[2:0] = 1													
		2	8-11	Repeat Sub-Loop 0, but ODT = 1 and BA[2:0] = 2													
		3	12-15	Repeat Sub-Loop 0, but ODT = 1 and BA[2:0] = 3													
		4	16-19	Repeat Sub-Loop 0, but ODT = 0 and BA[2:0] = 4													
		5	20-23	Repeat Sub-Loop 0, but ODT = 0 and BA[2:0] = 5													
		6	24-27	Repeat Sub-Loop 0, but ODT = 1 and BA[2:0] = 6													
7	28-31	Repeat Sub-Loop 0, but ODT = 1 and BA[2:0] = 7															

Notes:

- DM must be driven LOW all the time. DQS, \overline{DQS} are MID-LEVEL.
- DQ signals are MID-LEVEL.



IDD Measurement Conditions (Contd.)

IDD4R Measurement-Loop Pattern¹

CK, CK	CKE	Sub-Loop	Cycle Number	Command	CS	RAS	CAS	WE	ODT	BA[2:0]	A[15:11]	A[10]	A[9:7]	A[6:3]	A[2:0]	Data ²	
toggling	Static High	0	0	RD	0	1	0	1	0	0	00	0	0	0	0	00000000	
			1	D	1	0	0	0	0	0	0	00	0	0	0	0	-
			2-3	$\overline{D}, \overline{D}$	1	1	1	1	0	0	0	00	0	0	0	0	-
			4	RD	0	1	0	1	0	0	0	00	0	0	F	0	00110011
			5	D	1	0	0	0	0	0	0	00	0	0	F	0	-
			6-7	$\overline{D}, \overline{D}$	1	1	1	1	0	0	0	00	0	0	F	0	-
		1	8-15	Repeat Sub-Loop 0, but BA[2:0] = 1													
		2	16-23	Repeat Sub-Loop 0, but BA[2:0] = 2													
		3	24-31	Repeat Sub-Loop 0, but BA[2:0] = 3													
		4	32-39	Repeat Sub-Loop 0, but BA[2:0] = 4													
		5	40-47	Repeat Sub-Loop 0, but BA[2:0] = 5													
		6	48-55	Repeat Sub-Loop 0, but BA[2:0] = 6													
		7	56-63	Repeat Sub-Loop 0, but BA[2:0] = 7													

Notes:

- DM must be driven LOW all the time. DQS, \overline{DQS} are MID-LEVEL.
- DQ signals are MID-LEVEL.

IDD4W Measurement-Loop Pattern¹

CK, CK	CKE	Sub-Loop	Cycle Number	Command	CS	RAS	CAS	WE	ODT	BA[2:0]	A[15:11]	A[10]	A[9:7]	A[6:3]	A[2:0]	Data ²	
toggling	Static High	0	0	WR	0	1	0	0	1	0	00	0	0	0	0	00000000	
			1	D	1	0	0	0	1	0	00	0	0	0	0	-	
			2-3	$\overline{D}, \overline{D}$	1	1	1	1	1	0	00	0	0	0	0	-	
			4	WR	0	1	0	0	1	0	00	0	0	F	0	00110011	
			5	D	1	0	0	0	1	0	00	0	0	F	0	-	
			6-7	$\overline{D}, \overline{D}$	1	1	1	1	1	0	00	0	0	F	0	-	
		1	8-15	Repeat Sub-Loop 0, but BA[2:0] = 1													
		2	16-23	Repeat Sub-Loop 0, but BA[2:0] = 2													
		3	24-31	Repeat Sub-Loop 0, but BA[2:0] = 3													
		4	32-39	Repeat Sub-Loop 0, but BA[2:0] = 4													
		5	40-47	Repeat Sub-Loop 0, but BA[2:0] = 5													
		6	48-55	Repeat Sub-Loop 0, but BA[2:0] = 6													
		7	56-63	Repeat Sub-Loop 0, but BA[2:0] = 7													

Notes:



IDD Measurement Conditions (Contd.)

IDD5B Measurement-Loop Pattern¹

CK, CK	CKE	Sub-Loop	Cycle Number	Command	CS	RAS	CAS	WE	ODT	BA[2:0]	A[15:11]	A[10]	A[9:7]	A[6:3]	A[2:0]	Data ²	
toggling	Static High	0	0	REF	0	0	0	1	0	0	00	0	0	0	0	-	
		1	1-2	D	1	0	0	0	0	0	0	00	0	0	0	0	-
			3-4	\overline{D}	1	1	1	1	0	0	0	00	0	0	F	0	-
			5-8	Repeat cycles 1-4, but BA[2:0] = 1													
			9-12	Repeat cycles 1-4, but BA[2:0] = 2													
			13-16	Repeat cycles 1-4, but BA[2:0] = 3													
			17-20	Repeat cycles 1-4, but BA[2:0] = 4													
			21-24	Repeat cycles 1-4, but BA[2:0] = 5													
			25-28	Repeat cycles 1-4, but BA[2:0] = 6													
			29-32	Repeat cycles 1-4, but BA[2:0] = 7													
2	33-nRFC - 1	Repeat Sub-Loop 1 until nRFC - 1. Truncate if necessary															

Notes:

- DM must be driven LOW all the time. DQS, \overline{DQS} are MID-LEVEL.
- DQ signals are MID-LEVEL.

IDD7 Measurement-Loop Pattern¹

ATTENTION: Sub-Loops 10-19 have inverse A[6:3] Pattern and Data Pattern than Sub-Loops 0-9

CK, CK	CKE	Sub-Loop	Cycle Number	Command	CS	RAS	CAS	WE	ODT	BA[2:0]	A[15:11]	A[10]	A[9:7]	A[6:3]	A[2:0]	Data ²	
toggling	Static High	0	0	ACT	0	0	1	1	0	0	00	0	0	0	0	-	
			1	RDA	0	1	0	1	0	0	00	1	0	0	0	00000000	
			2	D	1	0	0	0	0	0	0	00	0	0	0	0	-
			...	Repeat above D Command until nRRD - 1													
		1	nRRD	ACT	0	0	1	1	0	1	00	0	0	F	0	-	
			nRRD + 1	RDA	0	1	0	1	0	1	00	1	0	F	0	00110011	
			nRRD + 2	D	1	0	0	0	0	1	00	0	0	F	0	-	
		...	Repeat above D Command until 2*nRRD - 1														
		2	2*nRRD	Repeat Sub-Loop 0, but BA[2:0] = 2													
		3	3*nRRD	Repeat Sub-Loop 1, but BA[2:0] = 3													
4	4*nRRD	D	1	0	0	0	0	3	00	0	0	F	0	-			
		Assert and repeat above D Command until nFAW - 1, if necessary															



IDD Measurement Conditions (Contd.)

IDD7 Measurement-Loop Pattern (Contd.)¹

ATTENTION: Sub-Loops 10-19 have inverse A[6:3] Pattern and Data Pattern than Sub-Loops 0-9

CK, CK	CKE	Sub-Loop	Cycle Number	Command	CS	RAS	CAS	WE	ODT	BA[2:0]	A[15:11]	A[10]	A[9:7]	A[6:3]	A[2:0]	Data ²
		5	nFAW	Repeat Sub-Loop 0, but BA[2:0] = 4												
		6	nFAW + nRRD	Repeat Sub-Loop 1, but BA[2:0] = 5												
		7	nFAW + 2*nRRD	Repeat Sub-Loop 0, but BA[2:0] = 6												
		8	nFAW + 3*nRRD	Repeat Sub-Loop 1, but BA[2:0] = 7												
toggling	Static High	9	nFAW + 4*nRRD	D	1	0	0	0	0	7	00	0	0	F	0	-
		Assert and repeat above D Command until 2*nFAW - 1, if necessary														
		10	2*nFAW	ACT	0	0	1	1	0	0	00	0	0	F	0	-
			2*nFAW + 1	RDA	0	1	0	1	0	0	00	1	0	F	0	00110011
			2*nFAW + 2	D	1	0	0	0	0	0	00	0	0	F	0	-
		Repeat above D Command until 2*nFAW + nRRD - 1														
		11	2*nFAW + nRRD	ACT	0	0	1	1	0	1	00	0	0	0	0	-
			2*nFAW + nRRD + 1	RDA	0	1	0	1	0	1	00	1	0	0	0	00000000
			2*nFAW + nRRD + 2	D	1	0	0	0	0	1	00	0	0	0	0	-
		Repeat above D Command until 2*nFAW + 2*nRRD - 1														
		12	2*nFAW + 2*nRRD	Repeat Sub-Loop 10, but BA[2:0] = 2												
		13	2*nFAW + 3*nRRD	Repeat Sub-Loop 11, but BA[2:0] = 3												
		14	2*nFAW + 4*nRRD	D	1	0	0	0	0	3	00	0	0	0	0	-
		Assert and repeat above D Command until 3*nFAW - 1, if necessary														
		15	3*nFAW	Repeat Sub-Loop 10, but BA[2:0] = 4												
		16	3*nFAW + nRRD	Repeat Sub-Loop 11, but BA[2:0] = 5												
		17	3*nFAW + 2*nRRD	Repeat Sub-Loop 10, but BA[2:0] = 6												
		18	3*nFAW + 3*nRRD	Repeat Sub-Loop 11, but BA[2:0] = 7												
		19	3*nFAW + 4*nRRD	D	1	0	0	0	0	7	00	0	0	0	0	-
Assert and repeat above D Command until 4*nFAW - 1, if necessary																

Notes:

- DM must be driven LOW all the time. DQS, \overline{DQS} are used according to RD Commands, otherwise MID-LEVEL
- Burst Sequence driven on each DQ signal by Read Command. Outside burst operation, DQ signals are MID-LEVEL.



IDD Specifications

Speed Bin	DDR3-800		DDR3-1066			DDR3-1333		Units	Notes
	5-5-5	6-6-6	6-6-6	7-7-7	8-8-8	8-8-8	9-9-9		
I _{DD0}	630	630	720	720	720	810	810	mA	
I _{DD1}	765	765	900	900	900	1035	1035	mA	
I _{DD2P0}	108	108	108	108	108	108	108	mA	
I _{DD2P1}	270	270	270	270	270	315	315	mA	
I _{DD2Q}	405	405	495	495	495	585	585	mA	
I _{DD2N}	405	405	495	495	495	585	585	mA	
I _{DD2NT}	540	540	675	675	675	765	765	mA	
I _{DD3P}	315	315	360	360	360	405	405	mA	
I _{DD3N}	450	450	540	540	540	675	675	mA	
I _{DD4R}	1125	1125	1440	1440	1440	1800	1800	mA	
I _{DD4W}	1395	1395	1800	1800	1800	2160	2160	mA	
I _{DD5B}	2025	2025	2205	2205	2205	2295	2295	mA	
I _{DD6}	108	108	108	108	108	108	108	mA	
I _{DD6ET}	135	135	135	135	135	135	135	mA	
I _{DD7}	2610	2610	2880	2880	2880	3285	3285	mA	

Pre-release



Refresh Parameters

Parameter	Symbol	2Gb	Units
REF command to ACT or REF command time	t _{RFC}	160	ns
Average periodic refresh interval	t _{REFI}	0 °C ≤ T _{CASE} ≤ 85 °C	7.8
		85 °C ≤ T _{CASE} ≤ 95 °C	3.9
			μs

Device Standard Speed Bins

DDR3-800 Speed Bins

Speed Bin		DDR3-800				Units	Notes	
CL - nRCD - nRP		5-5-5		6-6-6				
Parameter	Symbol	Min	Max	Min	Max			
Internal read command to first data	t _{AA}	12.5	20	15	20	ns		
ACT to internal read or write delay time	t _{RCD}	12.5	-	15	-	ns		
Pre command period	t _{RP}	12.5	-	15	-	ns		
ACT to ACT or REF command period	t _{RC}	50	-	52.5	-	ns		
ACT to PRE command period	t _{RAS}	37.5	9 * t _{REFI}	37.5	9 * t _{REFI}	ns		
CL = 5	CWL = 5	t _{CK(ave)}	2.5	3.3	Reserved		ns	1, 2, 3, 4
CL = 6	CWL = 5	t _{CK(ave)}	2.5	3.3	2.5	3.3	ns	1, 2, 3
Supported CL Settings		5, 6		6		n _{CK}		
Supported CWL Settings		5		5		n _{CK}		

Device Standard Speed Bins (Contd.)
DDR3-1066 Speed Bins

Speed Bin		DDR3-1066						Units	Notes	
CL - nRCD - nRP		6-6-6		7-7-7		8-8-8				
Parameter	Symbol	Min	Max	Min	Max	Min	Max			
Internal read command to first data	t _{AA}	11.25	20	13.125	20	15	20	ns		
ACT to internal read or write delay time	t _{RCD}	11.25	-	13.125	-	15	-	ns		
Pre command period	t _{RP}	11.25	-	13.125	-	15	-	ns		
ACT to ACT or REF command period	t _{RC}	48.75	-	50.625	-	52.5	-	ns		
ACT to PRE command period	t _{RAS}	37.5	9 * t _{REFI}	37.5	9 * t _{REFI}	37.5	9 * t _{REFI}	ns		
CL = 5	CWL = 5	t _{CK(avg)}	2.5	3.3	Reserved		Reserved		ns	1, 2, 3, 4, 5
	CWL = 6	t _{CK(avg)}	Reserved		Reserved		Reserved		ns	4
CL = 6	CWL = 5	t _{CK(avg)}	2.5	3.3	2.5	3.3	2.5	3.3	ns	1, 2, 3, 5
	CWL = 6	t _{CK(avg)}	1.875	< 2.5	Reserved		Reserved		ns	1, 2, 3, 4
CL = 7	CWL = 5	t _{CK(avg)}	Reserved		Reserved		Reserved		ns	4
	CWL = 6	t _{CK(avg)}	1.875	< 2.5	1.875	< 2.5	Reserved		ns	1, 2, 3, 4
CL = 8	CWL = 5	t _{CK(avg)}	Reserved		Reserved		Reserved		ns	1, 2, 3, 4
	CWL = 6	t _{CK(avg)}	1.875	< 2.5	1.875	< 2.5	1.875	< 2.5	ns	1, 2, 3
Supported CL Settings		5, 6, 7, 8		6, 7, 8		6, 8		n _{CK}		
Supported CWL Settings		5, 6		5, 6		5, 6		n _{CK}		



Device Standard Speed Bins (Contd.)

DDR3-1333 Speed Bins

Speed Bin		DDR3-1333				Units	Notes	
CL - nRCD - nRP		8-8-8		9-9-9				
Parameter	Symbol	Min	Max	Min	Max			
Internal read command to first data	t _{AA}	12	20	13.5	20	ns		
ACT to internal read or write delay time	t _{RCD}	12	-	13.5	-	ns		
Pre command period	t _{RP}	12	-	13.5	-	ns		
ACT to ACT or REF command period	t _{RC}	48	-	49.5	-	ns		
ACT to PRE command period	t _{RAS}	36	9 * t _{REFI}	36	9 * t _{REFI}	ns		
CL = 5	CWL = 5	t _{CK(avg)}	2.5	3.3	Reserved		ns	1, 2, 3, 4, 6
	CWL = 6, 7		Reserved		Reserved		ns	4
CL = 6	CWL = 5	t _{CK(avg)}	2.5	3.3	2.5	3.3	ns	1, 2, 3, 6
	CWL = 6, 7		Reserved		Reserved		ns	4
CL = 7	CWL = 5	t _{CK(avg)}	Reserved		Reserved		ns	4
	CWL = 6		1.875	< 2.5	Reserved		ns	1, 2, 3, 4, 6
	CWL = 7		Reserved		Reserved		ns	4
CL = 8	CWL = 5	t _{CK(avg)}	Reserved		Reserved		ns	4
	CWL = 6		1.875	< 2.5	1.875	< 2.5	ns	1, 2, 3, 6
	CWL = 7		1.5	< 1.875	Reserved		ns	1, 2, 3, 4
CL = 9	CWL = 5, 6	t _{CK(avg)}	Reserved		Reserved		ns	4
	CWL = 7		1.5	< 1.875	1.5	< 1.875	ns	1, 2, 3
Supported CL Settings		5, 6, 7, 8, 9		6, 8, 9		n _{CK}		
Supported CWL Settings		5, 6, 7		5, 6, 7		n _{CK}		



Speed Bin Tables Notes

1. The CL setting and CWL setting result in $t_{CK(AVG)min}$ and $t_{CK(AVG)max}$ requirements. When making a selection of $t_{CK(AVG)}$, both need to be fulfilled: Requirements from CL setting as well as requirements from CWL setting.
2. $t_{CK(AVG)min}$ limits: Since \overline{CAS} Latency is not purely analog - data and strobe output are synchronized by the DLL - all possible intermediate frequencies may not be guaranteed. An application should use the next smaller JEDEC standard $t_{CK(AVG)}$ value (2.5, 1.875, or 1.5) when calculating $CL [nCK] = t_{AA} [ns] / t_{CK(AVG)} [ns]$, rounding up to the next 'Supported CL'.
3. $t_{CK(AVG)max}$ limits: Calculate $t_{CK(AVG)} = t_{AAmax} / CL \text{ SELECTED}$ and round the resulting $t_{CK(AVG)}$ down to the next valid speed bin (i.e. 3.3ns, 2.5ns, or 1.875 ns). This result is $t_{CK(AVG)max}$ corresponding to CL SELECTED.
4. 'Reserved' settings are not allowed. User must program a different value.
5. Any DDR3-1066 speed bin also supports functional operation at lower frequencies as shown in the table which are not subject to Production Tests but verified by Design/Characterization.
6. Any DDR3-1333 speed bin also supports functional operation at lower frequencies as shown in the table which are not subject to Production Tests but verified by Design/Characterization.

Preliminary

Device Timing Parameters by Speed Bin

Parameter	Symbol	DDR3-800		DDR3-1066		DDR3-1333		Units	Notes
		Min	Max	Min	Max	Min	Max		
Clock Timing									
Minimum clock cycle time (DLL off mode)	t _{CK(DLL_OFF)}	8	-	8	-	8	-	t _{CK}	6
Average clock period	t _{CK(avg)}	Refer to Speed Bins on pages 31-33.						ps	
Average high pulse width	t _{CH(avg)}	0.47	0.53	0.47	0.53	0.47	0.53	t _{CK(avg)}	
Average low pulse width	t _{CL(avg)}	0.47	0.53	0.47	0.53	0.47	0.53	t _{CK(avg)}	
Absolute clock period	t _{CK(abs)}	t _{CK(avg)} min + t _{JIT(per)} min	t _{CK(avg)} max + t _{JIT(per)} max	t _{CK(avg)} min + t _{JIT(per)} min	t _{CK(avg)} max + t _{JIT(per)} max	t _{CK(avg)} min + t _{JIT(per)} min	t _{CK(avg)} max + t _{JIT(per)} max	ps	
Absolute clock high pulse width	t _{CH(abs)}	0.43	-	0.43	-	0.43	-	t _{CK(avg)}	25
Absolute clock low pulse width	t _{CL(abs)}	0.43	-	0.43	-	0.43	-	t _{CK(avg)}	26
Clock period jitter	t _{JIT(per)}	-100	100	-90	90	-80	80	ps	
Clock period jitter during DLL locking period	t _{JIT(per, lck)}	-90	90	-80	80	-70	70	ps	
Cycle to cycle period jitter	t _{JIT(CC)}	200		180		160		ps	
Cycle to cycle period jitter during DLL locking period	t _{JIT(CC, lck)}	180		160		140		ps	
Duty cycle jitter	t _{JIT(duty)}	-	-	-	-	-	-	ps	
Cumulative error across 2 cycles	t _{ERR(2per)}	-147	147	-132	132	-118	118	ps	
Cumulative error across 3 cycles	t _{ERR(3per)}	-175	175	-157	157	-140	140	ps	
Cumulative error across 4 cycles	t _{ERR(4per)}	-194	194	-175	175	-155	155	ps	
Cumulative error across 5 cycles	t _{ERR(5per)}	-209	209	-188	188	-168	168	ps	
Cumulative error across 6 cycles	t _{ERR(6per)}	-222	222	-200	200	-177	177	ps	
Cumulative error across 7 cycles	t _{ERR(7per)}	-232	232	-209	209	-186	186	ps	
Cumulative error across 8 cycles	t _{ERR(8per)}	-241	241	-217	217	-193	193	ps	
Cumulative error across 9 cycles	t _{ERR(9per)}	-249	249	-224	224	-200	200	ps	
Cumulative error across 10 cycles	t _{ERR(10per)}	-257	257	-231	231	-205	205	ps	
Cumulative error across 11 cycles	t _{ERR(11per)}	-263	263	-237	237	-210	210	ps	
Cumulative error across 12 cycles	t _{ERR(12per)}	-269	269	-242	242	-215	215	ps	
Cumulative error across n = 13-50 cycles	t _{ERR(nper)}	$t_{ERR(nper)min} = (1 + 0.68 \ln(n)) * t_{JIT(per)min}$ $t_{ERR(nper)max} = (1 + 0.68 \ln(n)) * t_{JIT(per)max}$						ps	24



Device Timing Parameters by Speed Bin (Contd.)

Parameter	Symbol	DDR3-800		DDR3-1066		DDR3-1333		Units	Notes
		Min	Max	Min	Max	Min	Max		
Data Timing									
DQS, \overline{DQS} to DQ skew, per group, per access	t_{DQSQ}	-	200	-	150	-	125	ps	13
DQ output hold time from DQS, \overline{DQS}	t_{QH}	0.38	-	0.38	-	0.38	-	$t_{CK(ave)}$	13, b
DQ low-impedance from CK, \overline{CK}	$t_{LZ(DQ)}$	-800	400	-600	300	-500	250	ps	13, 14, a
DQ high-impedance from CK, \overline{CK}	$t_{HZ(DQ)}$	-	400	-	300	-	250	ps	13, 14, a
Data setup time to DQS, \overline{DQS} referenced to $V_{IH(AC)} / V_{IL(AC)}$ levels	$t_{DS(base)}$	75	-	25	-	TBD	-	ps	17, d
Data hold time from DQS, \overline{DQS} referenced to $V_{IH(DC)} / V_{IL(DC)}$ levels	$t_{DH(base)}$	150	-	100	-	TBD	-	ps	17, d
Data Strobe Timing									
DQS, \overline{DQS} differential READ preamble	t_{RPRE}	0.9	Note 19	0.9	Note 19	0.9	Note 19	$t_{CK(ave)}$	13, 19, b
DQS, \overline{DQS} differential READ postamble	t_{RPST}	0.3	Note 11	0.3	Note 11	0.3	Note 11	$t_{CK(ave)}$	11, 13, b
DQS, \overline{DQS} differential output high time	t_{QSH}	0.38	-	0.38	-	0.4	-	$t_{CK(ave)}$	13, b
DQS, \overline{DQS} differential output low time	t_{QSL}	0.38	-	0.38	-	0.4	-	$t_{CK(ave)}$	13, b
DQS, \overline{DQS} differential WRITE preamble	t_{WPRE}	0.9	-	0.9	-	0.9	-	$t_{CK(ave)}$	
DQS, \overline{DQS} differential WRITE postamble	t_{WPST}	0.3	-	0.3	-	0.3	-	$t_{CK(ave)}$	
DQS, \overline{DQS} rising edge output access time from rising CK, \overline{CK}	t_{DQSK}	-400	400	-300	300	-255	255	ps	13, a
DQS and \overline{DQS} low-impedance time (Referenced from RL - 1)	$t_{LZ(DQS)}$	-800	400	-600	300	-500	250	ps	13, 14, a
DQS and \overline{DQS} low-impedance time (Referenced from RL + BL / 2)	$t_{HZ(DQS)}$	-	400	-	300	-	250	ps	13, 14, a
DQS, \overline{DQS} differential input low pulse width	t_{DQSL}	0.4	0.6	0.4	0.6	0.4	0.6	$t_{CK(ave)}$	
DQS, \overline{DQS} differential input high pulse width	t_{DQSH}	0.4	0.6	0.4	0.6	0.4	0.6	$t_{CK(ave)}$	
DQS, \overline{DQS} rising edge to CK, \overline{CK} rising edge	t_{DQSS}	-0.25	0.25	-0.25	0.25	-0.25	0.25	$t_{CK(ave)}$	c
DQS, \overline{DQS} falling edge setup time to CK, \overline{CK} rising edge	t_{DSS}	0.2	-	0.2	-	0.2	-	$t_{CK(ave)}$	c
DQS, \overline{DQS} falling edge hold time from CK, \overline{CK} rising edge	t_{DSH}	0.2	-	0.2	-	0.2	-	$t_{CK(ave)}$	c



Device Timing Parameters by Speed Bin (Contd.)

Parameter	Symbol	DDR3-800		DDR3-1066		DDR3-1333		Units	Notes
		Min	Max	Min	Max	Min	Max		
Command and Address Timing									
DLL locking time	t _{DLLK}	512	-	512	-	512	-	nCK	
Internal READ command to PRECHARGE command delay	t _{RTP}	max (4nCK, 7.5ns)	-	max (4nCK, 7.5ns)	-	max (4nCK, 7.5ns)	-		e
Delay from start of internal write transaction to internal READ command	t _{WTR}	max (4nCK, 7.5ns)	-	max (4nCK, 7.5ns)	-	max (4nCK, 7.5ns)	-		18, e
WRITE recovery time	t _{WR}	15	-	15	-	15	-	ns	e
Mode Register Set command cycle time	t _{MRD}	4	-	4	-	4	-	nCK	
Mode Register Set command update delay	t _{MOD}	max (12nCK, 15ns)	-	max (12nCK, 15ns)	-	max (12nCK, 15ns)	-		
ACT to internal read or write delay time	t _{RCD}	Refer to Speed Bins on pages 31-33.							e
PRECHARGE command period	t _{RP}	Refer to Speed Bins on pages 31-33.							e
ACT to ACT or REF command period	t _{RC}	Refer to Speed Bins on pages 31-33.							e
CAS to $\overline{\text{CAS}}$ command delay	t _{CCD}	4	-	4	-	4	-	nCK	
Auto-precharge write recovery + precharge time	t _{DAL(min)}	WR + roundup (t _{RP} / t _{CK(avg)})							nCK
Multi-purpose register recovery time	t _{MRRR}	1	-	1	-	1	-	nCK	22
ACTIVE to PRECHARGE command period	t _{RAS}	Refer to Speed Bins on pages 31-33.							e
ACTIVE to ACTIVE command period for 1KB page size	t _{RRD}	max (4nCK, 10ns)	-	max (4nCK, 7.5ns)	-	max (4nCK, 6ns)	-		e
Four activate window for 1KB page size	t _{FAW}	40	-	37.5	-	30	-	ns	e
Command and Address setup time to CK, CK referenced to V _{IH(AC)} / V _{IL(AC)} levels	t _{IS(base)}	200	-	125	-	65	-	ps	16, b
Command and Address hold time to CK, CK referenced to V _{IH(DC)} / V _{IL(DC)} levels	t _{IH(base)}	275	-	200	-	140	-	ps	16, b
Command and Address setup time to CK, CK referenced to V _{IH(AC)} / V _{IL(AC)} levels	t _{IS(base) AC150}	-	-	-	-	65 + 125	-	ps	16, 27, b
Calibration Timing									
Power-up and RESET calibration time	t _{ZQinit}	512	-	512	-	512	-	nCK	
Normal operation Full calibration time	t _{ZQoper}	256	-	256	-	256	-	nCK	
Normal operation Short calibration time	t _{ZQCS}	64	-	64	-	64	-	nCK	23



Device Timing Parameters by Speed Bin (Contd.)

Parameter	Symbol	DDR3-800		DDR3-1066		DDR3-1333		Units	Notes
		Min	Max	Min	Max	Min	Max		
Reset Timing									
Exit Reset from CKE HIGH to a valid command	t _{XPR}	max (5nCK, t _{RFC} (min) + 10ns)	-	max (5nCK, t _{RFC} (min) + 10ns)	-	max (5nCK, t _{RFC} (min) + 10ns)	-		
Self Refresh Timing									
Exit Self Refresh from to commands not requiring a locked DLL	t _{XS}	max (5nCK, t _{RFC} (min) + 10ns)	-	max (5nCK, t _{RFC} (min) + 10ns)	-	max (5nCK, t _{RFC} (min) + 10ns)	-		
Exit Self Refresh from to commands requiring a locked DLL	t _{XSDLL}	t _{DLLK} (min)	-	t _{DLLK} (min)	-	t _{DLLK} (min)	-	nCK	
Minimum CKE low width for Self Refresh entry to exit timing	t _{CKESR}	t _{CKE} (min) + 1nCK	-	t _{CKE} (min) + 1nCK	-	t _{CKE} (min) + 1nCK	-		
Valid clock requirement after Self Refresh Entry (SRE) or Power-Down Entry (PDE)	t _{CKSRE}	max (5nCK, 10ns)	-	max (5nCK, 10ns)	-	max (5nCK, 10ns)	-		
Valid clock requirement before Self Refresh Exit (SRX) or Power-Down Exit (PDX) or Reset Exit	t _{CKSRX}	max (5nCK, 10ns)	-	max (5nCK, 10ns)	-	max (5nCK, 10ns)	-		
Power Down Timing									
Exit Power Down with DLL on to any valid command; Exit Precharge Power Down with DLL frozen to commands not requiring a locked DLL	t _{XP}	max (3nCK, 7.5ns)	-	max (3nCK, 7.5ns)	-	max (3nCK, 7.5ns)	-		
Exit Precharge Power Down with DLL frozen to commands requiring a locked DLL	t _{XPDLL}	max (10nCK, 24ns)	-	max (10nCK, 24ns)	-	max (10nCK, 24ns)	-		2
Command pass disable delay	t _{CPDED}	1	-	1	-	1	-	nCK	
Power Down Entry to Exit Timing	t _{PD}	t _{CKE} (min)	9 * t _{REFI}	t _{CKE} (min)	9 * t _{REFI}	t _{CKE} (min)	9 * t _{REFI}		15
Timing of ACT command to Power Down entry	t _{ACTPDEN}	1	-	1	-	1	-	nCK	20
Timing of PRE or PREA command to Power Down entry	t _{PRPDEN}	1	-	1	-	1	-	nCK	20
Timing of RD/RDA command to Power Down entry	t _{RDPDEN}	RL + 4 + 1	-	RL + 4 + 1	-	RL + 4 + 1	-	nCK	
CKE minimum pulse width	t _{CKE}	max (3nCK, 7.5ns)	-	max (3nCK, 5.625ns)	-	max (3nCK, 5.625ns)	-	nCK	



Device Timing Parameters by Speed Bin (Contd.)

Parameter	Symbol	DDR3-800		DDR3-1066		DDR3-1333		Units	Notes
		Min	Max	Min	Max	Min	Max		
Timing of WR command to Power Down entry (BL8OTF, BL8MRS, BC4OTF)	t _{WRPDEN}	WL + 4+ (t _{WR} / t _{CK(avg)})	-	WL + 4+ (t _{WR} / t _{CK(avg)})	-	WL + 4+ (t _{WR} / t _{CK(avg)})	-	nCK	9
Timing of WRA command to Power Down entry (BL8OTF, BL8MRS, BC4OTF)	t _{WRAPDEN}	WL + 4+ WR + 1	-	WL + 4+ WR + 1	-	WL + 4+ WR + 1	-	nCK	10
Timing of WR command to Power Down entry (BC4MRS)	t _{WRPDEN}	WL + 2+ (t _{WR} / t _{CK(avg)})	-	WL + 2+ (t _{WR} / t _{CK(avg)})	-	WL + 2+ (t _{WR} / t _{CK(avg)})	-	nCK	9
Timing of WRA command to Power Down entry (BC4MRS)	t _{WRAPDEN}	WL + 2+ WR + 1	-	WL + 2+ WR + 1	-	WL + 2+ WR + 1	-	nCK	10
Timing of REF command to Power Down entry	t _{REFPDEN}	1	-	1	-	1	-	nCK	20, 21
Timing of MRS command to Power Down entry	t _{MRSPDEN}	t _{MOD} (min)	-	t _{MOD} (min)	-	t _{MOD} (min)	-		
ODT Timing									
ODT high time without Write command or with Write command and BC4	ODTH4	4	-	4	-	4	-	nCK	
ODT high time with Write command and BL8	ODTH8	6	-	6	-	6	-	nCK	
Asynchronous RTT turn-on delay (Power-Down with DLL frozen)	t _{AONPD}	1	9	1	9	1	9	ns	
Asynchronous RTT turn-off delay (Power-Down with DLL frozen)	t _{AOFFPD}	1	9	1	9	1	9	ns	
RTT turn-on	t _{AON}	-400	400	-300	300	-250	250	ps	7, a
RTT_Nom and RTT_WR turn-off time from ODTLoff reference	t _{AOFF}	0.3	0.7	0.3	0.7	0.3	0.7	t _{CK(avg)}	8, a
RTT dynamic change skew	t _{ADC}	0.3	0.7	0.3	0.7	0.3	0.7	t _{CK(avg)}	a
Write Leveling Timing									
First DQS/DQS rising edge after write leveling mode is programmed	t _{WLMRD}	40	-	40	-	40	-	nCK	3
DQS/DQS delay after write leveling mode is programmed	t _{WLDQSEN}	25	-	25	-	25	-	nCK	3
Write leveling setup time from rising CK, CK crossing to rising DQS, DQS crossing	t _{WLS}	325	-	245	-	195	-	ps	
Write leveling hold time from rising DQS, DQS crossing to rising CK, CK crossing	t _{WLH}	325	-	245	-	195	-	ps	
Write leveling output delay	t _{WLO}	0	9	0	9	0	9	ns	
Write leveling output error	t _{WLOE}	0	2	0	2	0	2	ns	



Device Timing Parameters Notes

1. Actual value dependant upon measurement level definitions which are TBD.
2. Commands requiring a locked DLL are: READ (and RAP) and synchronous ODT commands.
3. The max values are system dependent.
4. WR as programmed in the Mode Register.
5. Value must be rounded-up to next higher integer value.
6. There is no maximum cycle time limit besides the need to satisfy the refresh interval, t_{REFI} .
7. Minimum RTT turn-on time (t_{AONmin}) is the point in time when the device leaves high impedance and ODT resistance begins to turn on. Maximum RTT turn on time (t_{AONmax}) is the point in time when the ODT resistance is fully on. Both are measured from ODTL_{on}.
8. Minimum RTT turn-off time (t_{AOFmin}) is the point in time when the device starts to turn off the ODT resistance. Maximum RTT turn off time (t_{AOFmax}) is the point in time when the on-die termination has reached high impedance. Both are measured from ODTL_{off}.
9. t_{WR} is defined in ns, for calculation of t_{WRPDEN} it is necessary to round up t_{WR} / t_{CK} to the next integer.
10. WR is in clock cycles as programmed in MR0.
11. The maximum postamble is bound by $t_{HZDQS(max)}$.
12. Output timing deratings are relative to the SDRAM input clock. When the device is operated with input clock jitter, this parameter needs to be derated by TBD.
13. Value is only valid for RON34.
14. Single ended signal parameter.
15. t_{REFI} depends on T_{OPER} .
16. $t_{IS(base)}$ and $t_{IH(base)}$ values are for 1V/ns CMD/ADD single-ended slew rate and 2V/ns CK, \overline{CK} differential slew rate. Note for DQ and DM signals, $V_{REF(DC)} = V_{REFDQ(DC)}$. For input only pins except \overline{RESET} , $V_{REF(DC)} = V_{REFCA(DC)}$.
17. $t_{DS(base)}$ and $t_{DH(base)}$ values are for 1V/ns DQ single-ended slew rate and 2V/ns DQS, \overline{DQS} differential slew rate. Note for DQ and DM signals, $V_{REF(DC)} = V_{REFDQ(DC)}$. For input only pins except \overline{RESET} , $V_{REF(DC)} = V_{REFCA(DC)}$.
18. Start of internal write transaction is defined as follows:
 For BL8 (fixed by MRS and on- the-fly): Rising clock edge 4 clock cycles after WL.
 For BC4 (on- the- fly): Rising clock edge 4 clock cycles after WL.
 For BC4 (fixed by MRS): Rising clock edge 2 clock cycles after WL.
19. The maximum preamble is bound by $t_{LZDQS(min)}$.
20. CKE is allowed to be registered low while operations such as row activation, precharge, autoprecharge or refresh are in progress, but power-down IDD spec will not be applied until finishing those operations.
21. Although CKE is allowed to be registered LOW after a REFRESH command once $t_{REFPDEN(min)}$ is satisfied, there are cases where additional time such as $t_{XPDLL(min)}$ is also required.
22. Defined between end of MPR read burst and MRS which reloads MPR or disables MPR function.
23. One ZQCS command can effectively correct a minimum of 0.5% (ZQCorrection) of RON and RTT impedance error within 64 nCK for all speed bins assuming the maximum sensitivities specified in the 'Output Driver Voltage and Temperature Sensitivity' and 'ODT Voltage and Temperature Sensitivity' tables. The appropriate interval between ZQCS commands can be determined from these tables and other application-specific parameters.
 One method for calculating the interval between ZQCS commands, given the temperature ($T_{driftrate}$) and voltage ($V_{driftrate}$) drift rates that the SDRAM is subject to in the application, is illustrated. The interval could be defined by the following formula:

$$\frac{ZQCorrection}{(TSens \times Tdriftrate) + (VSens \times Vdriftrate)}$$

where $TSens = \max(dRRTdT, dRONdTM)$ and $VSens = \max(dRTTdV, dRONdVM)$ define the SDRAM temperature and voltage sensitivities.

For example, if $TSens = 1.5\% / ^\circ C$, $VSens = 0.15\% / mV$, $Tdriftrate = 1 ^\circ C / sec$ and $Vdriftrate = 15 mV / sec$, then the interval between ZQCS commands is calculated as:

$$\frac{0.5}{(1.5 \times 1) + (0.15 + 15)} = 0.133 \approx 128ms$$

24. n = from 13 cycles to 50 cycles. This row defines 38 parameters.
25. $t_{CH(abs)}$ is the absolute instantaneous clock high pulse width, as measured from one rising edge to the following falling edge.
26. $t_{CL(abs)}$ is the absolute instantaneous clock low pulse width, as measured from one falling edge to the following rising edge.
27. The $t_{IS(base)}$ AC150 specifications are adjusted from the $t_{IS(base)}$ specification by adding an additional 100 ps of derating to accommodate for the lower alternate threshold of 150 mV and another 25 ps to account for the earlier reference point [(175 mv - 150 mV) / 1 V/ns].



Jitter Notes

- a When the device is operated with input clock jitter, this parameter needs to be derated by the actual $t_{ERR(mper)act}$ of the input clock, where $2 \leq m \leq 12$. (Output deratings are relative to the SDRAM input clock.)

For example, if the measured jitter into a DDR3-800 SDRAM has $t_{ERR(mper)act,min} = -172$ ps and $t_{ERR(mper)act,max} = +193$ ps, then $t_{DQSCkmin(derated)} = t_{DQSCkmin} - t_{ERR(mper)act,max} = -400$ ps - 193 ps = -593 ps and $t_{DQSCkmax(derated)} = t_{DQSCk,max} - t_{ERR(mper)act,min} = 400$ ps + 172 ps = +572 ps. Similarly, $t_{LZ(DQ)}$ for DDR3-800 derates to $t_{LZ(DQ)min(derated)} = -800$ ps - 193 ps = -993 ps and $t_{LZ(DQ)max(derated)} = 400$ ps + 172 ps = +572 ps. (Caution on the min/max usage!)

Note that $t_{ERR(mper)act,min}$ is the minimum measured value of $t_{ERR(nper)}$ where $2 \leq n \leq 12$, and $t_{ERR(mper)act,max}$ is the maximum measured value of $t_{ERR(nper)}$ where $2 \leq n \leq 12$.

- b When the device is operated with input clock jitter, this parameter needs to be derated by the actual $t_{JIT(per)act}$ of the input clock. (Output deratings are relative to the SDRAM input clock.)

For example, if the measured jitter into a DDR3-800 SDRAM has $t_{CK(avg)act} = 2500$ ps, $t_{JIT(per)act,min} = -72$ ps and $t_{JIT(per)act,max} = +93$ ps, then $t_{RPREmin(derated)} = t_{RPREmin} + t_{JIT(per)act,min} = 0.9 \times t_{CK(avg)act} + t_{JIT(per)act,min} = 0.9 \times 2500$ ps - 72 ps = +2178 ps.

Similarly, $t_{QHmin(derated)} = t_{QHmin} + t_{JIT(per)act,min} = 0.38 \times t_{CK(avg)act} + t_{JIT(per)act,min} = 0.38 \times 2500$ ps - 72 ps = +878 ps. (Caution on the min/max usage!)

- c These parameters are measured from a data strobe signal (DQS, \overline{DQS}) crossing to its respective clock signal (CK, \overline{CK}) crossing. The spec values are not affected by the amount of clock jitter applied (i.e. $t_{JIT(per)}$, $t_{JIT(cc)}$, etc.), as these are relative to the clock signal crossing. That is, these parameters should be met whether clock jitter is present or not.
- d These parameters are measured from a data signal ($DM, DQ0, DQ1, \text{etc.}$) transition edge to its respective data strobe signal (DQS, \overline{DQS}) crossing.
- e For these parameters, the DDR3 SDRAM device supports $t_{nPARAM} [nCK] = RU\{t_{PARAM} [ns] / t_{CK(avg)} [ns]\}$, which is in clock cycles, assuming all input clock jitter specifications are satisfied. For example, the device will support $t_{nRP} = RU\{t_{RP} / t_{CK(avg)}\}$, which is in clock cycles, if all input clock jitter specifications are met. This means: For DDR3-800 6-6-6, of which $t_{RP} = 15$ ns, the device will support $t_{nRP} = RU\{t_{RP} / t_{CK(avg)}\} = 6$, as long as the input clock jitter specifications are met, i.e. Precharge command at Tm and Active command at $Tm+6$ is valid even if $(Tm+6 - Tm)$ is less than 15 ns due to input clock jitter.

Preliminary

Part Number Decode

<u>S</u>	<u>G</u>	<u>5</u>	<u>72</u>	<u>56</u>	<u>8</u>	<u>F</u>	<u>H</u>	<u>8</u>	<u>S</u>	<u>Z</u>	<u>U</u>	<u>U</u>	1
1	2	3	4	5	6	7	8	9	10	11	12	13	

- | | |
|---|--|
| <p>1 SMART Modular Technologies</p> <p>2 Module Process Technology
G: Green Module (RoHS Compliant)</p> <p>3 Product Category
5: SDRAM DIMM with Standard Testing</p> <p>4 Module Data Bus Width
72: x72</p> <p>5 Module Address Depth
56: 256M</p> <p>6 Device Data Width
8: x8</p> <p>7 Special Device Feature
F: Standard FBGA (8 Bank SDRAM)</p> <p>8 Technology
H: DDR3 SDRAM</p> <p>9 Refresh/Power
8: 8K Refresh/Standard Power</p> <p>10 Module Configuration
S: 244-pin Mini-DIMM Unbuffered, ECC</p> <p>11 Device Physicals
Z: 2Gbit Device Based</p> <p>12 CAS Latencies Supported
6: 6
K: 5, 6
R: 5, 6, 7, 8
L: 6, 7, 8
M: 6, 8
N: 5, 6, 7, 8, 9
P: 6, 8, 9</p> | <p>13 Cycle Time (Clock Speed)
A: 2.5ns (400MHz, PC3-6400, DDR3-800-555)
B: 2.5ns (400MHz, PC3-6400, DDR3-800-666)
C: 1.875ns (533MHz, PC3-8500, DDR3-1066-777)
D: 1.875ns (533MHz, PC3-8500, DDR3-1066-888)
E: 1.875ns (533MHz, PC3-8500, DDR3-1066-666)
G: 1.5ns (667MHz, PC3-10600, DDR3-1333-888)
H: 1.5ns (667MHz, PC3-10600, DDR3-1333-999)</p> |
|---|--|

Note: "UU" in the part number should be replaced by user specified option.

Disclaimer:

No part of this document may be copied or reproduced in any form or by any means, or transferred to any third party, without the prior written consent of an authorized representative of SMART Modular Technologies, Inc. ("SMART"). The information in this document is subject to change without notice. SMART assumes no responsibility for any errors or omissions that may appear in this document, and disclaims responsibility for any consequences resulting from the use of the information set forth herein. SMART makes no commitments to update or to keep current information contained in this document. The products listed in this document are not suitable for use in applications such as, but not limited to, aircraft control systems, aerospace equipment, submarine cables, nuclear reactor control systems and life support systems. Moreover, SMART does not recommend or approve the use of any of its products in life support devices or systems or in any application where failure could result in injury or death. If a customer wishes to use SMART products in applications not intended by SMART, said customer must contact an authorized SMART representative to determine SMART's willingness to support a given application. The information set forth in this document does not convey any license under the copyrights, patent rights, trademarks or other intellectual property rights claimed and owned by SMART. The information set forth in this document is considered to be "Proprietary" and "Confidential" property owned by SMART.

ALL PRODUCTS SOLD BY SMART ARE COVERED BY THE PROVISIONS APPEARING IN SMART'S TERMS AND CONDITIONS OF SALE ONLY, INCLUDING THE LIMITATIONS OF LIABILITY, WARRANTY AND INFRINGEMENT PROVISIONS. SMART MAKES NO WARRANTIES OF ANY KIND, EXPRESS, STATUTORY, IMPLIED OR OTHERWISE, REGARDING INFORMATION SET FORTH HEREIN OR REGARDING THE FREEDOM OF THE DESCRIBED PRODUCTS FROM INTELLECTUAL PROPERTY INFRINGEMENT, AND EXPRESSLY DISCLAIMS ANY SUCH WARRANTIES INCLUDING WITHOUT LIMITATION ANY EXPRESS, STATUTORY OR IMPLIED WARRANTIES OF MERCHANTABILITY OR FITNESS FOR A PARTICULAR PURPOSE.

©1996 SMART Modular Technologies, Inc. All rights reserved.