



Ordering Information

| Part Numbers | Description | Module Speed |
|------------------|--|-----------------------|
| SG572128CH8YZKA1 | 512Mx72 (4GB), DDR3, 244-pin Registered Mini-DIMM, Parity, ECC, VLP, 512Mx8 Based (Stacked - two 256Mx8), DDR3-800-555, 18.75mm, Green Module (RoHS Compliant). | PC3-6400 @ CL 5, 6 |
| SG572128CH8YZ6B1 | 512Mx72 (4GB), DDR3, 244-pin Registered Mini-DIMM, Parity, ECC, VLP, 512Mx8 Based (Stacked - two 256Mx8), DDR3-800-666, 18.75mm, Green Module (RoHS Compliant). | PC3-6400 @ CL 6 |
| SG572128CH8YZRE1 | 512Mx72 (4GB), DDR3, 244-pin Registered Mini-DIMM, Parity, ECC, VLP, 512Mx8 Based (Stacked - two 256Mx8), DDR3-1066-666, 18.75mm, Green Module (RoHS Compliant). | PC3-8500 @ CL 6, 7, 8 |
| SG572128CH8YZLC1 | 512Mx72 (4GB), DDR3, 244-pin Registered Mini-DIMM, Parity, ECC, VLP, 512Mx8 Based (Stacked - two 256Mx8), DDR3-1066-777, 18.75mm, Green Module (RoHS Compliant). | PC3-8500 @ CL 7, 8 |
| SG572128CH8YZMD1 | 512Mx72 (4GB), DDR3, 244-pin Registered Mini-DIMM, Parity, ECC, VLP, 512Mx8 Based (Stacked - two 256Mx8), DDR3-1066-888, 18.75mm, Green Module (RoHS Compliant). | PC3-8500 @ CL 8 |
| SG572128CH8YZNG1 | 512Mx72 (4GB), DDR3, 244-pin Registered Mini-DIMM, Parity, ECC, VLP, 512Mx8 Based (Stacked - two 256Mx8), DDR3-1333-888, 18.75mm, Green Module (RoHS Compliant). | PC3-10600 @ CL 8, 9 |
| SG572128CH8YZPH1 | 512Mx72 (4GB), DDR3, 244-pin Registered Mini-DIMM, Parity, ECC, VLP, 512Mx8 Based (Stacked - two 256Mx8), DDR3-1333-999, 18.75mm, Green Module (RoHS Compliant). | PC3-10600 @ CL 9 |

(All specifications of this module are subject to change without notice.)



Revision History

- **January 13, 2010**
Preliminary datasheet released.

Preliminary

4GByte (512Mx72) DDR3 SDRAM Module - 512Mx8 Based (Stacked - two 256Mx8) 244-pin Registered Mini-DIMM, Parity, ECC, VLP

Features

- Standard = JEDEC
- Configuration = ECC
- Number of Module Ranks = 2
- Number of Devices = 18
- $V_{DD} = V_{DDQ} = 1.5V$
- $V_{DDSPD} = 1.7V$ to $3.6V$
- Cycle Time = 2.5ns (PC3-6400)
1.875 (PC3-8500)
1.5ns (PC3-10600)
- \overline{CAS} Latency = 5, 6, 7, 8, 9
- Additive Latency = 0, CL-1, and CL-2
- \overline{CAS} Write Latency (CWL) = 5, 6, 7
- Burst Length = BC4, BL8, BC4 or BL8 (on the fly)
- Burst Length = Nibble Sequential & Interleave Mode
- Internal Banks per SDRAM = 8
- Refresh = 8K/64ms
- Device Package = Stacked FBGA
- Lead Finish = Gold
- Length x Height = 82.00mm x 18.75mm
- No. of sides = Double-sided
- Mating Connector (Examples)
Horizontal = Molex - 87918-0301
Angled = Molex - 87783-0301
- ZQ calibration supported
- On chip DLL align DQ, DQS and \overline{DQS} transition with CK transition
- DM write data-in at both the rising and falling edges of the data strobe
- All addresses and control inputs latched on the rising edges of the clock
- Dynamic On Die Termination supported
- Driver strength selected by EMRS
- Asynchronous RESET pin supported
- Write Levelization supported
- 8-bit pre-fetch

Addressing

| Device Configuration | 256Mx8 |
|--------------------------|----------------------|
| Number of Internal Banks | 8 |
| Bank Address | BA0 - BA2 |
| Auto precharge | A10/AP |
| BC switch on the fly | A12/ \overline{BC} |
| Row Address | A0 - A14 |
| Column Address | A0 - A9 |

Pin Description Table

| Symbol | Type | Polarity | Function |
|--|---------|-----------------------|---|
| $\overline{CK0}\sim\overline{CK1}$, $\overline{CK0}\sim\overline{CK1}$ | SSTL_15 | Differential Crossing | CK and \overline{CK} are differential clock inputs. All the DDR3 SDRAM address/control inputs are sampled on the crossing of the positive edge of CK and the negative edge of \overline{CK} . Output (read) data is referenced to the crossing of CK and \overline{CK} (Both directions of crossing). |
| CKE0, CKE1 | SSTL_15 | Active High | Activates the SDRAM CK signal when high and deactivates the CK signal when low. By deactivating the clocks, CKE low initiates the Power Down mode, or the Self Refresh mode. |
| $\overline{CS0}\sim\overline{CS1}$ | SSTL_15 | Active Low | Enables the associated SDRAM command decoder when low and disables the command decoder when high. When decoder is disabled, new commands are ignored but previous operations continue. This signal provides for external rank selection on systems with multiple ranks. |
| ODT0, ODT1 | SSTL_15 | Active High | When high, termination resistance is enabled for all DQ, DQS, \overline{DQS} and DM pins, assuming this function is enabled on the DRAM. |
| BA0~BA2 | SSTL_15 | - | Selects which SDRAM bank of the eight is activated. |



Pin Description Table (Contd.)

| Symbol | Type | Polarity | Function |
|-----------------------------------|---------|-----------------------|--|
| A0~A15 | SSTL_15 | - | During a Bank Activate command cycle, address inputs define the row address (RA0-RA14). During a Read or Write command cycle, address inputs define the column address (CA0-CA9). In addition to the column address, AP is used to invoke auto-precharge operation at the end of the burst read or write cycle. If AP is high, auto-precharge is selected and BA0, BA1, BA2 defines the bank to be precharged. If AP is low, auto-precharge is disabled. During a Precharge command cycle, AP is used in conjunction with BA0, BA1, BA2 to control which bank(s) to precharge. If AP is high, all banks will be precharged regardless of the state of BA0, BA1 or BA2. If AP is low, BA0, BA1 and BA2 are used to define which bank to precharge. A12(BC) is sampled during READ and WRITE commands to determine if burst chop (on-the-fly) will be performed (HIGH, no burst chop; LOW, burst chopped). A15 is only connected to the register for the parity check. |
| RAS, CAS, WE | SSTL_15 | Active Low | RAS, CAS, and WE (along with CS) define the command being entered. |
| DQ0~DQ63 CB0~CB7 | SSTL_15 | - | Data and Check Bit Input/Output pins. |
| DQS0~DQS8 DQS0~DQS8 | SSTL_15 | Differential Crossing | Data strobe for input and output data. |
| DM0~DM8 | SSTL_15 | Active High | DM is an input mask signal for write data. Input data is masked when DM is sampled high coincident with that input data during a write access. DM is sampled on both edges of DQS. Although DM pins are input only, the DM loading matches the DQ and DQS loading. |
| SA0~SA2 | | - | These signals are tied at the system to either V _{SS} or V _{DDSPD} to configure the serial SPD EEPROM address range. |
| SDA | | - | This bidirectional pin is used to transfer data into or out of the SPD EEPROM. An external resistor may be connected from the SDA bus line to V _{DDSPD} to act as a pullup on the system board. |
| SCL | | - | This signal is used to clock data into and out of the SPD EEPROM. An external resistor may be connected from the SCL bus tied to V _{DDSPD} to act as a pullup on the system board. |
| EVENT | Output | Active Low | This signal indicates that a thermal event has been detected in the thermal sensing device. The system should guarantee the electrical level requirement is met for the EVENT pin on TS/SPD part. No pull-up resistor is provided on DIMM. |
| RESET | CMOS | Active Low | Asynchronous Reset is active when RESET is LOW, and inactive when RESET is HIGH. RESET must be HIGH during normal operation. RESET is CMOS rail to rail signal with DC high and low at 80% and 20% of V _{DD} . |
| V _{DD} , V _{SS} | Supply | - | Power and ground for the DDR3 SDRAM input buffers, and core logic. V _{DD} and V _{DDQ} pins are tied to V _{DD} /V _{DDQ} planes on these modules. V _{SS} pins are tied to V _{SS} planes on these modules. |
| V _{DDQ} | Supply | - | Power supply for the DDR3 SDRAM output buffers to provide improved noise immunity. V _{DDQ} shares the same power plane as V _{DD} pins. |
| V _{REFDQ} | Supply | - | Reference voltage for I/O inputs. |
| V _{REFCA} | Supply | - | Reference voltage for address/command inputs. |
| V _{DDSPD} | Supply | - | Power supply for SPD EEPROM. This supply is separate from the V _{DD} /V _{DDQ} power plane. EEPROM supply is operable from 1.7V to 3.6V. |
| V _{TT} | Supply | - | Termination voltage for address/command/control/clock nets. |
| NC | - | - | No Connect. |

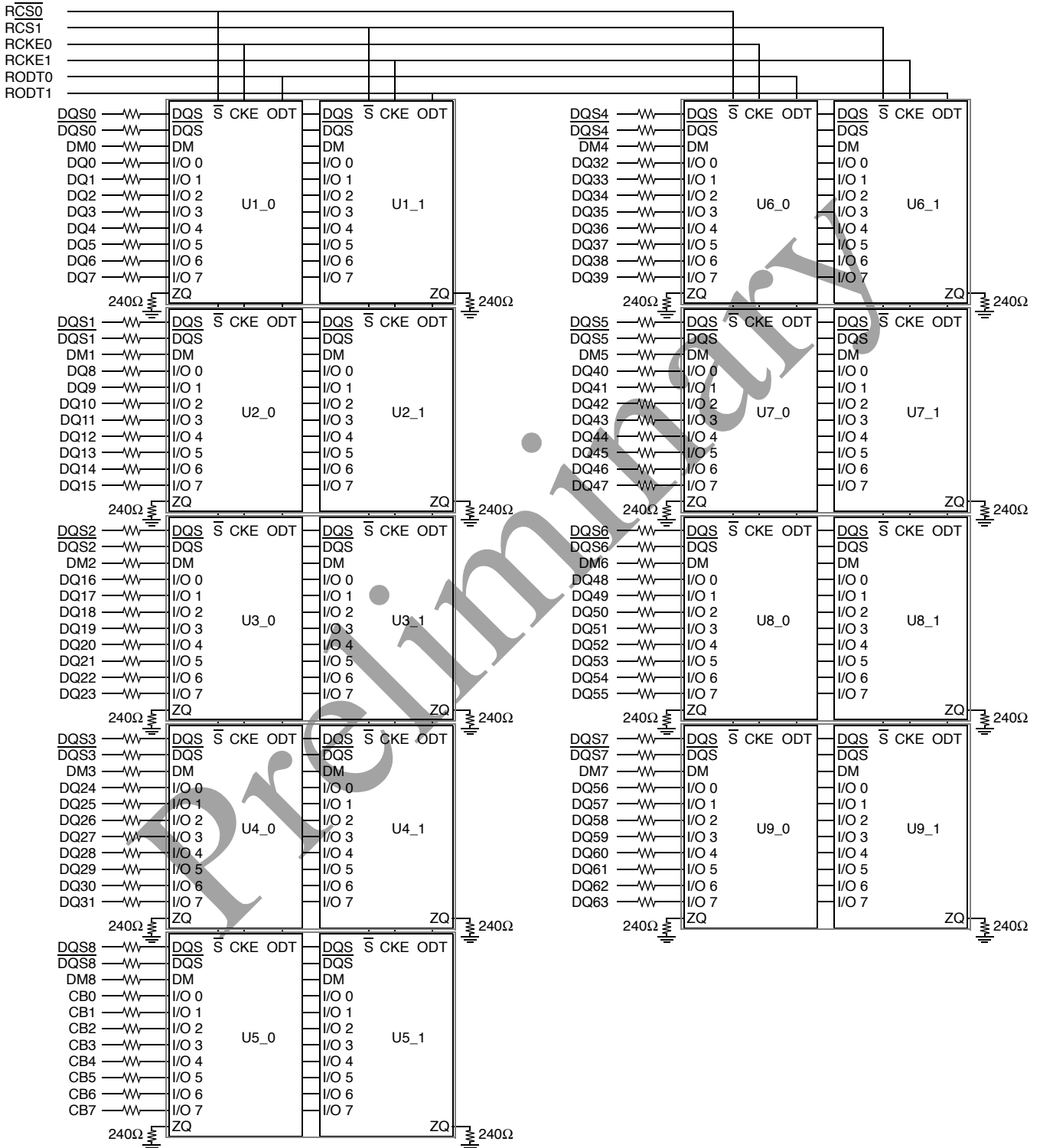


DDR3 244-pin Mini-DIMM Pin List

| Pin No | Pin Name | Pin No | Pin Name | Pin No | Pin Name | Pin No | Pin Name | Pin No | Pin Name | Pin No | Pin Name | Pin No | Pin Name | Pin No | Pin Name |
|--------|--------------------------|--------|-----------------------------|--------|------------------------------|--------|--------------------------|--------|-----------------|--------|-----------------------------|--------|---------------------------|--------|---------------------|
| 1 | V _{TT} | 32 | DQ25 | 63 | V _{DD} | 93 | DQ41 | 123 | V _{TT} | 154 | V _{SS} | 185 | V _{DD} | 215 | V _{SS} |
| 2 | V _{REFDQ} | 33 | V _{SS} | 64 | CK1 | 94 | V _{SS} | 124 | V _{SS} | 155 | DM3 | 186 | CK0 | 216 | DM5 |
| 3 | V _{SS} | 34 | $\overline{\text{DQS3}}$ | 65 | $\overline{\text{CK1}}$ | 95 | $\overline{\text{DQS5}}$ | 125 | DQ4 | 156 | NC | 187 | $\overline{\text{CK0}}$ | 217 | NC |
| 4 | DQ0 | 35 | DQS3 | 66 | V _{DD} | 96 | DQS5 | 126 | DQ5 | 157 | V _{SS} | 188 | V _{DD} | 218 | V _{SS} |
| 5 | DQ1 | 36 | V _{SS} | 67 | V _{REFCA} | 97 | V _{SS} | 127 | V _{SS} | 158 | DQ30 | 189 | V _{DD} | 219 | DQ46 |
| 6 | V _{SS} | 37 | DQ26 | 68 | V _{DD} | 98 | DQ42 | 128 | DM0 | 159 | DQ31 | 190 | $\overline{\text{EVENT}}$ | 220 | DQ47 |
| 7 | $\overline{\text{DQS0}}$ | 38 | DQ27 | 69 | PAR_IN | 99 | DQ43 | 129 | NC | 160 | V _{SS} | 191 | A0 | 221 | V _{SS} |
| 8 | DQS0 | 39 | V _{SS} | 70 | V _{DD} | 100 | V _{SS} | 130 | V _{SS} | 161 | CB4 | 192 | V _{DD} | 222 | DQ52 |
| 9 | V _{SS} | 40 | CB0 | 71 | A10/AP | 101 | DQ48 | 131 | DQ6 | 162 | CB5 | 193 | BA1 | 223 | DQ53 |
| 10 | DQ2 | 41 | CB1 | 72 | BA0 | 102 | DQ49 | 132 | DQ7 | 163 | V _{SS} | 194 | V _{DD} | 224 | V _{SS} |
| 11 | DQ3 | 42 | V _{SS} | 73 | V _{DD} | 103 | V _{SS} | 133 | V _{SS} | 164 | DM8 | 195 | $\overline{\text{RAS}}$ | 225 | DM6 |
| 12 | V _{SS} | 43 | $\overline{\text{DQS8}}$ | 74 | $\overline{\text{WE}}$ | 104 | $\overline{\text{DQS6}}$ | 134 | DQ12 | 165 | NC | 196 | $\overline{\text{CS0}}$ | 226 | NC |
| 13 | DQ8 | 44 | DQS8 | 75 | $\overline{\text{CAS}}$ | 105 | DQS6 | 135 | DQ13 | 166 | V _{SS} | 197 | V _{DD} | 227 | V _{SS} |
| 14 | DQ9 | 45 | V _{SS} | 76 | V _{DD} | 106 | V _{SS} | 136 | V _{SS} | 167 | CB6 | 198 | ODT0 | 228 | DQ54 |
| 15 | V _{SS} | 46 | CB2 | 77 | $\overline{\text{CS1}}$ | 107 | DQ50 | 137 | DM1 | 168 | CB7 | 199 | A13 | 229 | DQ55 |
| 16 | $\overline{\text{DQS1}}$ | 47 | CB3 | 78 | ODT1 | 108 | DQ51 | 138 | NC | 169 | V _{SS} | 200 | V _{DD} | 230 | V _{SS} |
| 17 | DQS1 | 48 | V _{SS} | 79 | V _{DD} | 109 | V _{SS} | 139 | V _{SS} | 170 | RFU | 201 | CS3# (NC) | 231 | DQ60 |
| 18 | V _{SS} | 49 | RFU | 80 | $\overline{\text{CS2}}$ (NC) | 110 | DQ56 | 140 | DQ14 | 171 | NC | 202 | RFU | 232 | DQ61 |
| 19 | DQ10 | 50 | $\overline{\text{RESET}}$ | 81 | RFU | 111 | DQ57 | 141 | DQ15 | 172 | CKE1 | 203 | V _{SS} | 233 | V _{SS} |
| 20 | DQ11 | 51 | CKE0 | 82 | V _{SS} | 112 | V _{SS} | 142 | V _{SS} | 173 | V _{DD} | 204 | DQ36 | 234 | DM7 |
| 21 | V _{SS} | 52 | V _{DD} | 83 | DQ32 | 113 | $\overline{\text{DQS7}}$ | 143 | DQ20 | 174 | A15 | 205 | DQ37 | 235 | NC |
| 22 | DQ16 | 53 | BA2 | 84 | DQ33 | 114 | DQS7 | 144 | DQ21 | 175 | A14 | 206 | V _{SS} | 236 | V _{SS} |
| 23 | DQ17 | 54 | $\overline{\text{ERR_OUT}}$ | 85 | V _{SS} | 115 | V _{SS} | 145 | V _{SS} | 176 | V _{DD} | 207 | DM4 | 237 | DQ62 |
| 24 | V _{SS} | 55 | V _{DD} | 86 | $\overline{\text{DQS4}}$ | 116 | DQ58 | 146 | DM2 | 177 | A12/ $\overline{\text{BC}}$ | 208 | NC | 238 | DQ63 |
| 25 | $\overline{\text{DQS2}}$ | 56 | A11 | 87 | DQS4 | 117 | DQ59 | 147 | NC | 178 | A9 | 209 | V _{SS} | 239 | V _{SS} |
| 26 | DQS2 | 57 | A7 | 88 | V _{SS} | 118 | V _{SS} | 148 | V _{SS} | 179 | V _{DD} | 210 | DQ38 | 240 | V _{DD} SPD |
| 27 | V _{SS} | 58 | V _{DD} | 89 | DQ34 | 119 | SA0 | 149 | DQ22 | 180 | A8 | 211 | DQ39 | 241 | SA1 |
| 28 | DQ18 | 59 | A5 | 90 | DQ35 | 120 | SCL | 150 | DQ23 | 181 | A6 | 212 | V _{SS} | 242 | SDA |
| 29 | DQ19 | 60 | A4 | 91 | V _{SS} | 121 | SA2 | 151 | V _{SS} | 182 | V _{DD} | 213 | DQ44 | 243 | V _{SS} |
| 30 | V _{SS} | 61 | V _{DD} | 92 | DQ40 | 122 | V _{TT} | 152 | DQ28 | 183 | A3 | 214 | DQ45 | 244 | V _{TT} |
| 31 | DQ24 | 62 | A2 | | | | | 153 | DQ29 | 184 | A1 | | | | |

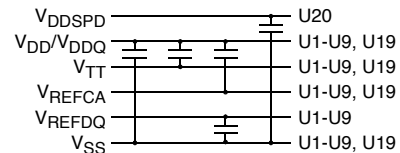
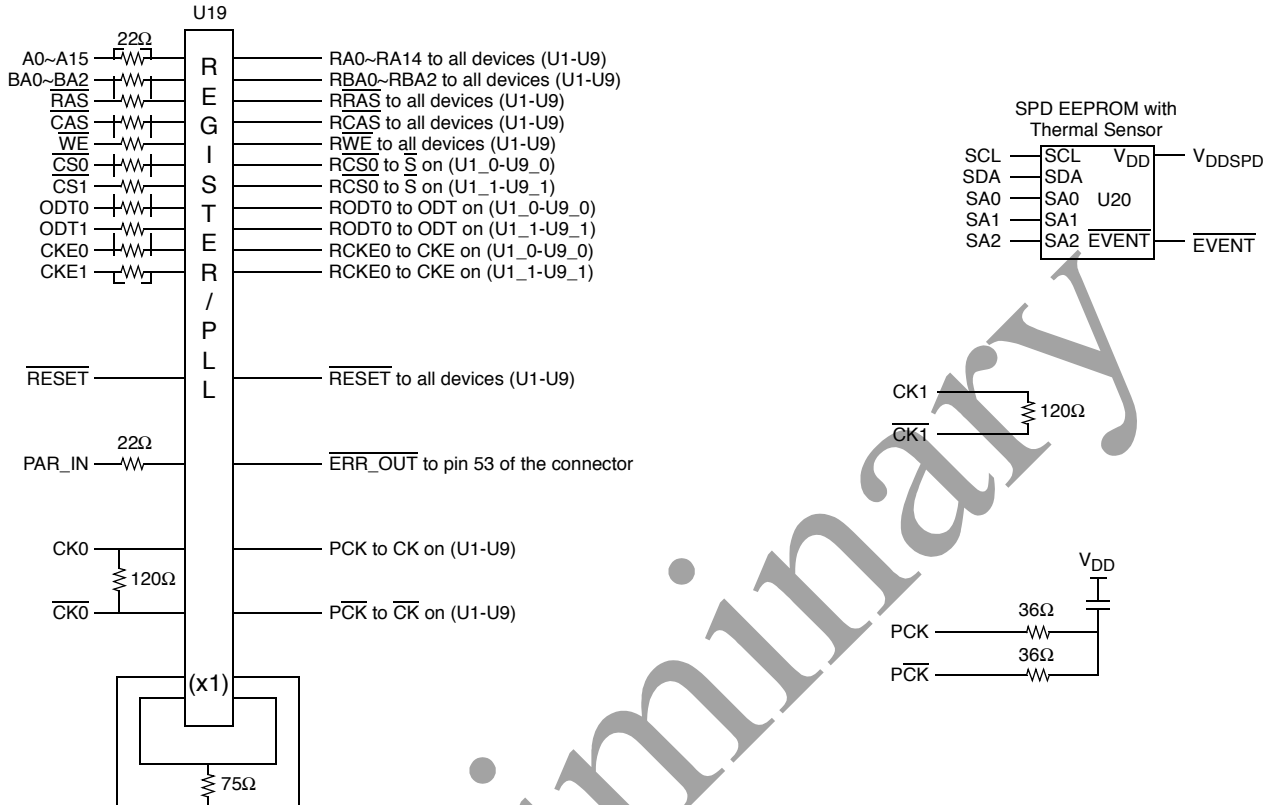


Block Diagram





Block Diagram (Contd.)



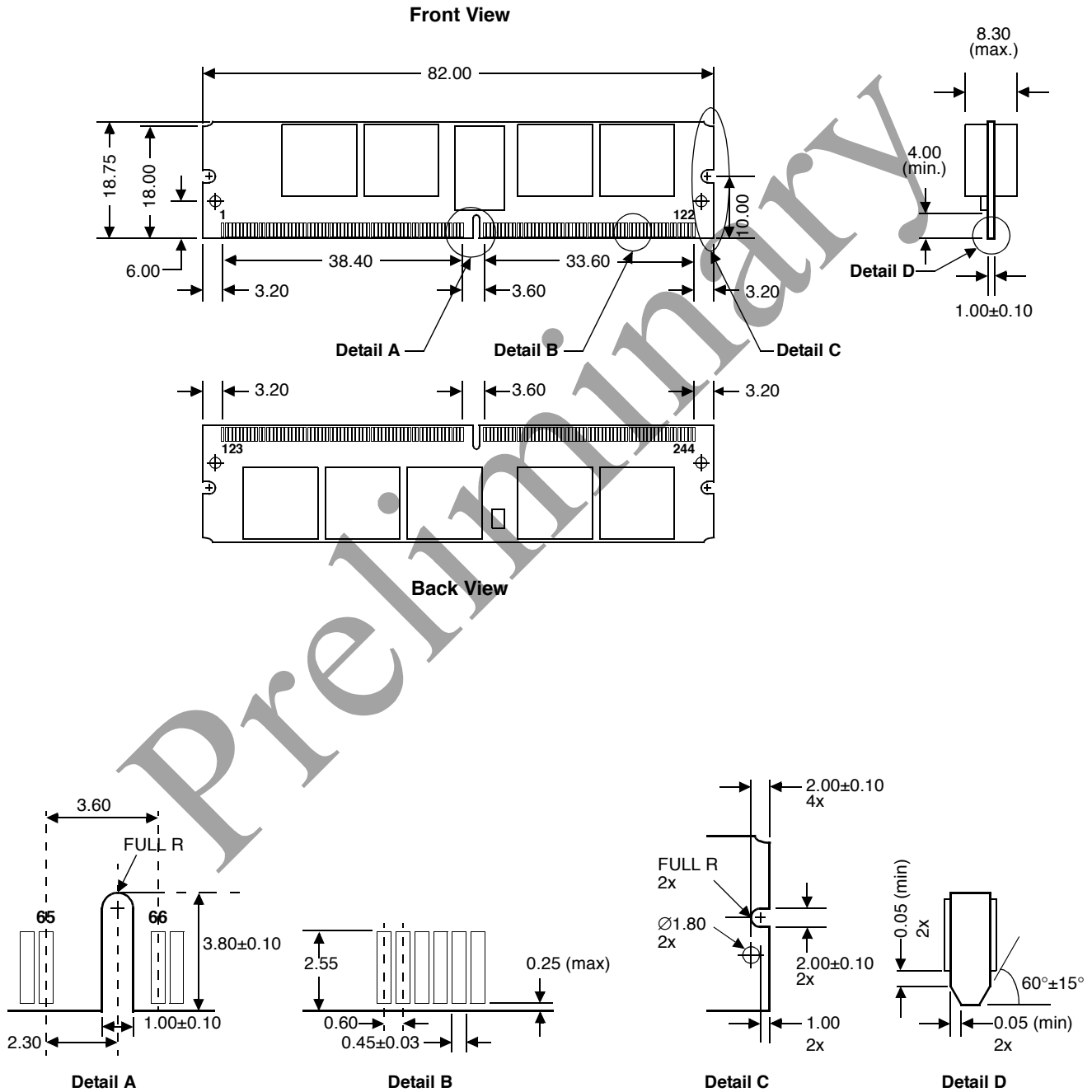
Notes:

1. Each address, clock, command and control signal output line from the register is terminated at the end of the line through a 36Ω series resistor to V_{TT} .
2. Data bits may be swapped within a device. However, DQ/DQS/DM relationship must be maintained as shown on page 6.



Physical Dimensions

244-pin Mini-DIMM Module

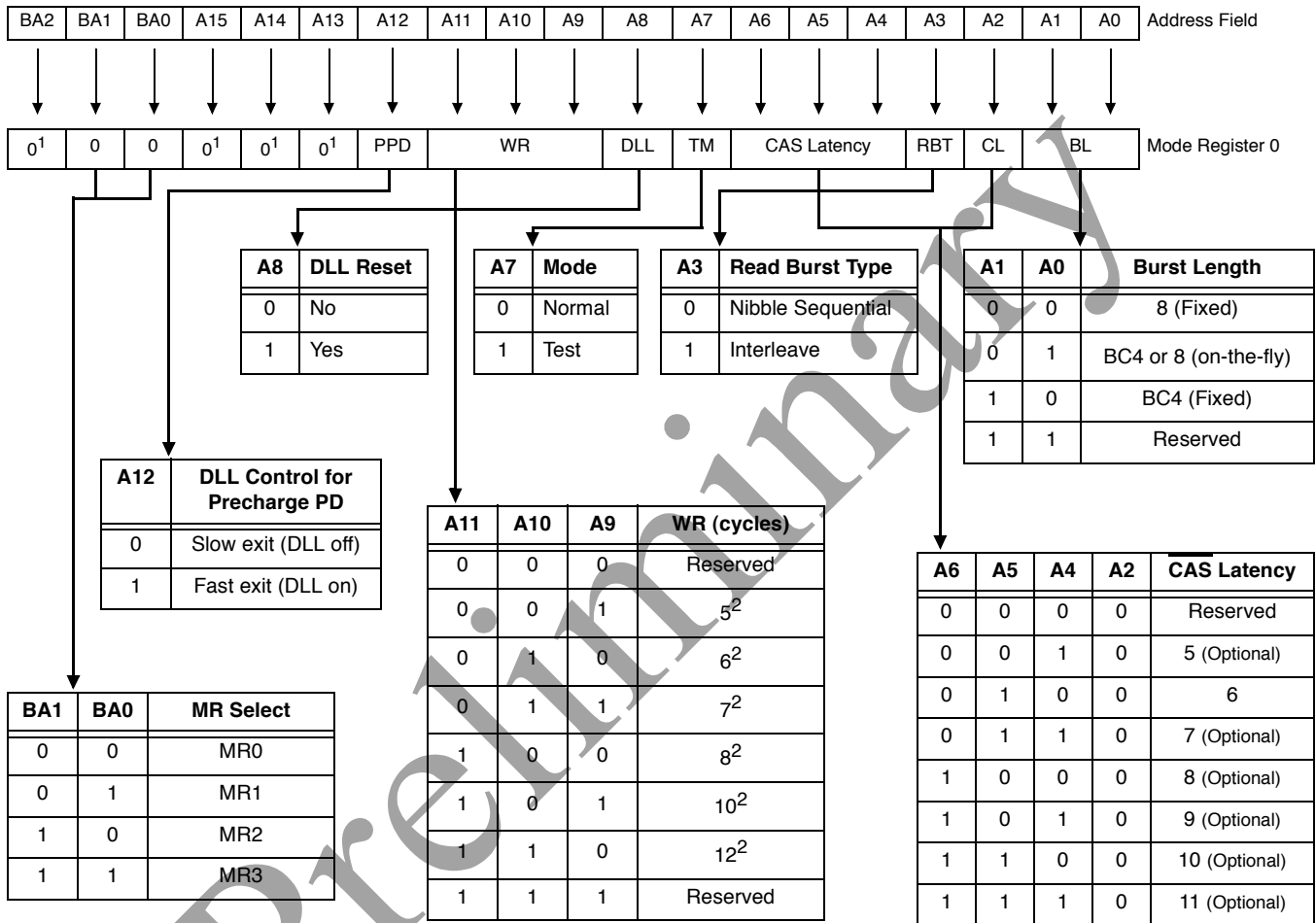


(All dimensions are in millimeters with ±0.15mm tolerance unless specified otherwise.)



Mode Register (MR0) Table Definition

The mode register stores the data for controlling the various operating modes of DDR3 SDRAM. It controls CAS latency, burst length, burst chop, burst sequence, test mode, DLL reset, t_{WR} and various vendor specific options to make DDR3 SDRAM useful for various applications. The mode register is written by asserting low on \overline{CS} , \overline{RAS} , \overline{CAS} , \overline{WE} , BA0, BA1 and BA2 while controlling the state of address pins A0~A15.



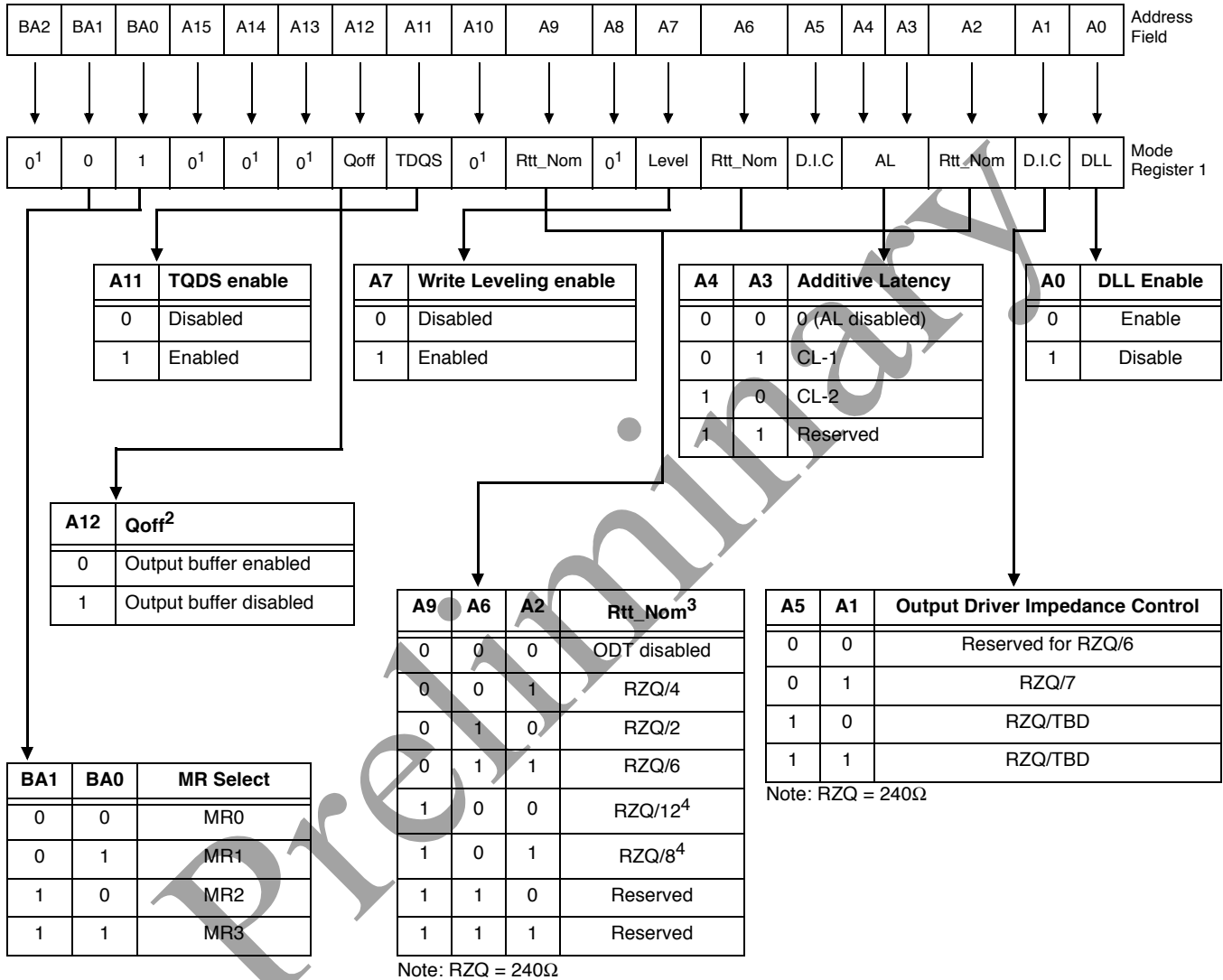
Notes:

- BA2 and A13~A15 are reserved for future use and must be programmed to 0 during MRS.
- WR(write recovery for autoprecharge)min in clock cycles is calculated by dividing t_{WR} (in ns) by t_{CK} (in ns) and rounding up to the next integer: $WR_{min}[\text{cycles}] = \text{Round-up}(t_{WR}[\text{ns}] / t_{CK}[\text{ns}])$. The WR value in the mode register must be programmed to be equal or larger than WR_{min} . The programmed WR value is used with t_{RP} to determine t_{DAL} .



Mode Register (MR1) Table Definition

The Mode Registers MR1 stores the data for enabling or disabling the DLL, output driver strength, Rtt_Nom impedance, additive latency, Write Leveling enable, TDQS enable and Qoff. The Mode Register 1 is written by asserting low on \overline{CS} , \overline{RAS} , \overline{CAS} , \overline{WE} , high on BA0 and low on BA1 and BA2, while controlling the state of address pins A0~A15.



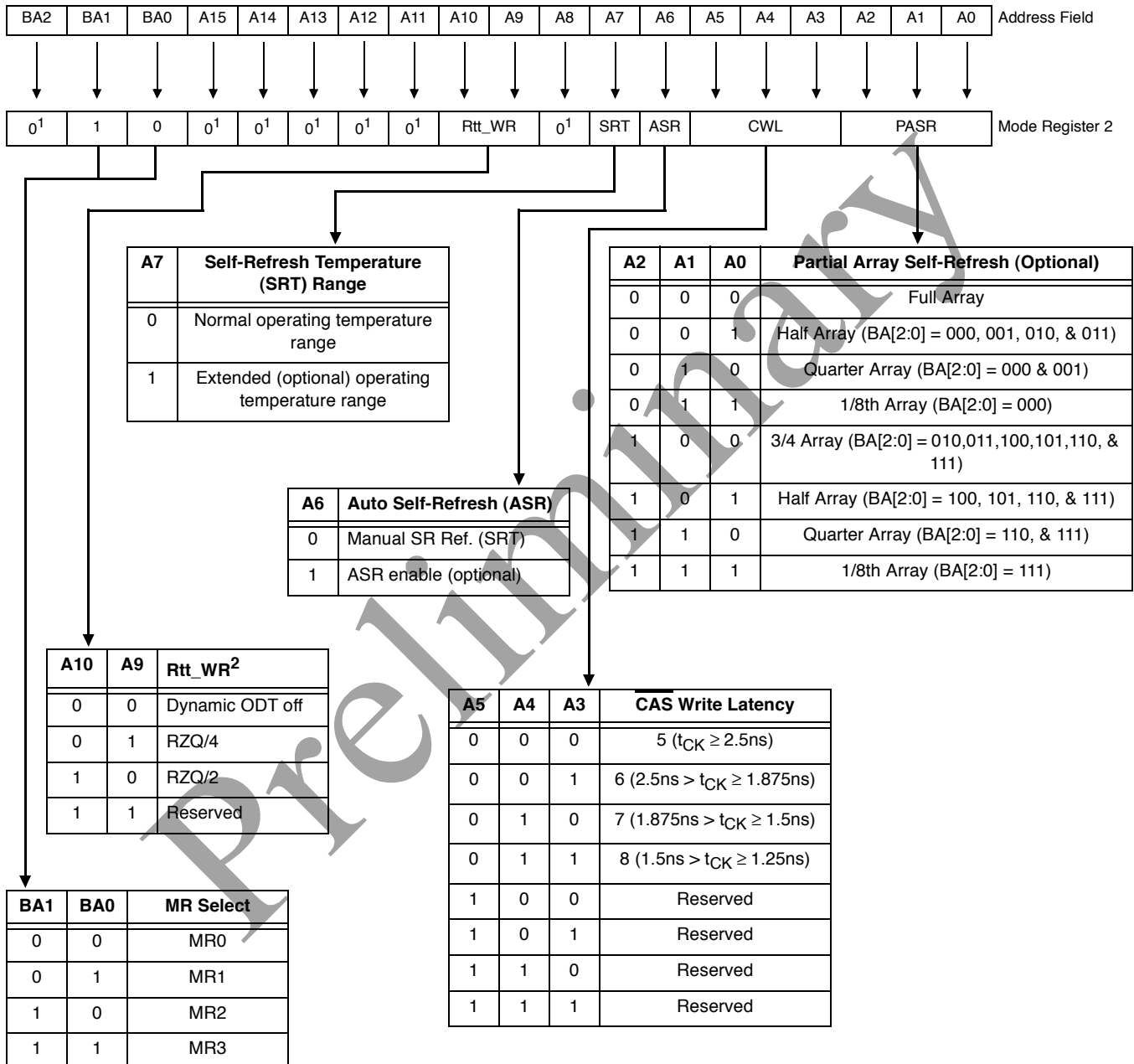
Notes:

1. BA2 and A8, A10, A13~A15 are reserved for future use and must be programmed to 0 during MRS.
2. Outputs disabled - DQs, DQSs, DQSs.
3. In Write Leveling Mode (MR1[bit7] = 1) with MR1[bit12] = 1, all Rtt_Nom settings are allowed; in Write Leveling Mode (MR1[bit7]=1) with MR1[bit12] = 0, only Rtt_Nom settings of RZQ/2, RZQ/4 and RZQ/6 are allowed.
4. If Rtt_Nom is used during Writes, only the values RZQ/2, RZQ/4 and RZQ/6 are allowed.



Mode Register (MR2) Table Definition

The Mode Registers MR2 stores the data for controlling refresh related features, Rtt_WR impedance, and CAS Write Latency. The Mode Register 2 is written by asserting low on \overline{CS} , \overline{RAS} , \overline{CAS} , \overline{WE} , high on BA1 and low on BA0 and BA2 while controlling the state of address pins A0~A15.



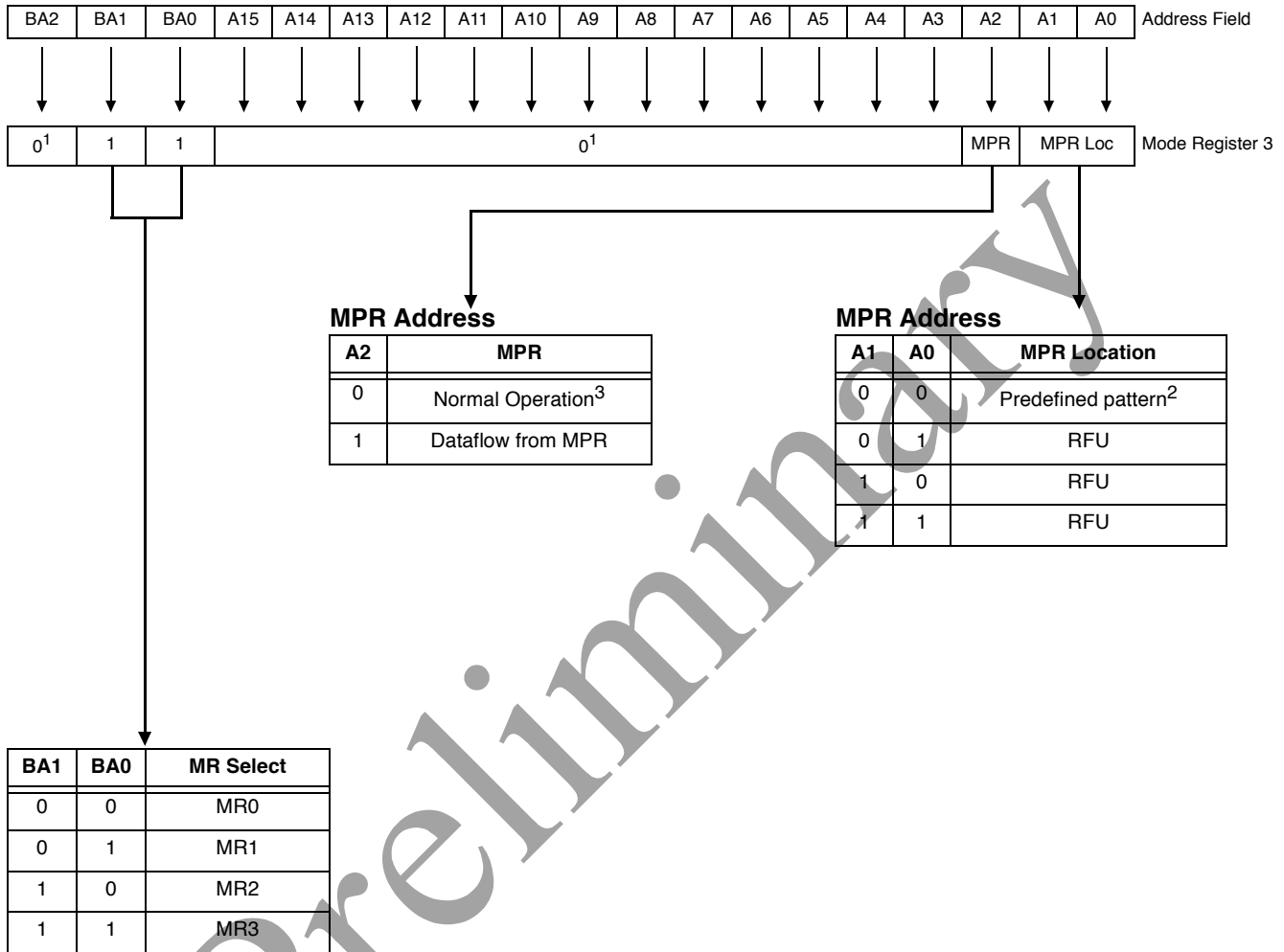
Notes:

- BA2, A8 and A11~A15 are reserved for future use and must be programmed to 0 during MRS.
- If Rtt_WR value can be applied during writes even when Rtt_Nom is disabled. During Write Leveling, Dynamic ODT is not available.



Mode Register (MR3) Table Definition

The Mode Register MR3 controls Multi-purpose registers. The Mode Register 3 is written by asserting low on \overline{CS} , \overline{RAS} , \overline{CAS} , \overline{WE} , high on BA1 and BA0, low on BA2 while controlling the state of address pins A0~A15.



Notes:

1. BA2, A3~A15 are reserved for future use and must be programmed to 0 during MRS.
2. The predefined pattern will be used for read synchronization.
3. When MPR control is set for normal operation (MR3 A[2] = 0), then MR3 A[1:0] will be ignored.



Command Truth Table

The following Truth Tables provide a general reference of available commands. For a more detailed description please refer to the device data sheets.

(a) Notes 1- 4 apply to the entire Command Truth Table.

(b) Note 5 applies to all Read/Write command.

[BA= Bank address, RA= row Address, CA = Column Address, \overline{BC} = Burst chop, X = Don't care, V = Valid]

| Function | Abbreviation | CKE | | CS | RAS | CAS | WE | BA0~BA2 | A13~A15 | A12/ \overline{BC} | A10/AP | A0-A9, A11 | Notes |
|--|--------------|----------------|---------------|----|-----|-----|----|---------|-------------|----------------------|--------|------------|-------------|
| | | Previous Cycle | Current Cycle | | | | | | | | | | |
| Mode Register Set | MRS | H | H | L | L | L | L | BA | OP Code | | | | |
| Refresh | REF | H | H | L | L | L | H | V | V | V | V | V | |
| Self-Refresh Entry | SRE | H | L | L | L | L | H | V | V | V | V | V | 7, 9, 12 |
| Self-Refresh Exit | SRX | L | H | H | V | V | V | V | V | V | V | V | 7, 8, 9, 12 |
| | | | | L | H | H | H | | | | | | |
| Single Bank Precharge | PRE | H | H | L | L | H | L | BA | V | V | L | V | |
| Precharge All Banks | PREA | H | H | L | L | H | L | V | V | V | H | V | |
| Bank Activate | ACT | H | H | L | L | H | H | BA | Row Address | | | | |
| Write (Fixed BL8 or BC4) | WR | H | H | L | H | L | L | BA | RFU | V | L | CA | |
| Write (BC4, on the Fly) | WRS4 | H | H | L | H | L | L | BA | RFU | L | L | CA | |
| Write (BL8, on the Fly) | WRS8 | H | H | L | H | L | L | BA | RFU | H | L | CA | |
| Write with Auto-Precharge (Fixed BL8 or BC4) | WRA | H | H | L | H | L | L | BA | RFU | V | H | CA | |
| Write with Auto-Precharge (BC4, on the Fly) | WRAS4 | H | H | L | H | L | L | BA | RFU | L | H | CA | |
| Write with Auto-Precharge (BL8, on the Fly) | WRAS8 | H | H | L | H | L | L | BA | RFU | H | H | CA | |
| Read (Fixed BL8 or BC4) | RD | H | H | L | H | L | H | BA | RFU | V | L | CA | |
| Read (BC4, on the Fly) | RDS4 | H | H | L | H | L | H | BA | RFU | L | L | CA | |
| Read (BL8, on the Fly) | RDS8 | H | H | L | H | L | H | BA | RFU | H | L | CA | |
| Read with Auto-Precharge (Fixed BL8 or BC4) | RDA | H | H | L | H | L | H | BA | RFU | V | H | CA | |
| Read with Auto-Precharge (BC4, on the Fly) | RDAS4 | H | H | L | H | L | H | BA | RFU | L | H | CA | |
| Read with Auto-Precharge (BL8, on the Fly) | RDAS8 | H | H | L | H | L | H | BA | RFU | H | H | CA | |
| No Operation | NOP | H | H | L | H | H | H | V | V | V | V | V | 10 |
| Device Deselected | DES | H | H | H | X | X | X | X | X | X | X | X | 11 |
| Power-Down Entry | PDE | H | L | L | H | H | H | V | V | V | V | V | 6, 12 |
| | | | | H | V | V | V | | | | | | |
| Power-Down Exit | PDX | L | H | L | H | H | H | V | V | V | V | V | 6, 12 |
| | | | | H | V | V | V | | | | | | |
| ZQ Calibration Long | ZQCL | H | H | L | H | H | L | X | X | X | H | X | |
| ZQ Calibration Short | ZQCS | H | H | L | H | H | L | X | X | X | L | X | |



Command Truth Table Notes:

1. All DDR3 SDRAM commands are defined by states of \overline{CS} , \overline{RAS} , \overline{CAS} , \overline{WE} , and CKE at the rising edge of the clock. The MSB of BA, RA and CA are device density and configuration dependant.
2. \overline{RESET} command is enabled when Low, which will be used only for asynchronous reset, so \overline{RESET} must be maintained HIGH during any function.
3. Bank addresses (BA) determine which bank is to be operated upon. For (E)MRS, BA selects an (Extended) Mode Register.
4. "V" means "H or L (but a defined logic level)" and "X" means either "defined or undefined (like floating) logic level".
5. Burst reads or writes cannot be terminated or interrupted and Fixed/on-the-Fly BL will be defined by the MRS.
6. The Power-Down Mode does not perform any refresh operation.
7. The state of ODT does not affect the states described in this table. The ODT function is not available during Self-Refresh.
8. Self-Refresh Exit is asynchronous.
9. V_{REF} (Both V_{REFDQ} and V_{REFCA}) must be maintained during Self-Refresh operation.
10. The No Operation command should be used in cases when the DDR3 SDRAM is in an idle or wait state. The purpose of the No Operation command (NOP) is to prevent the DDR3 SDRAM from registering any unwanted commands between operations. A No Operation command will not terminate a previous operation that is still executing, such as a burst read and write cycle.
11. The Deselect command performs the same function as No Operation command.
12. Refer to the CKE Truth Table for more detail with CKE transition.

Preliminary

CKE Truth Table

- (a) Notes 1-7 apply to the entire CKE Truth Table.
 (b) CKE low is allowed only if tMRD and tMOD are satisfied.

| Current State | CKE | | Command (N) ³ RAS, CAS, WE, CS | Action (N) ³ | Notes |
|---|----------------------|-------------------|--|----------------------------|----------------|
| | Previous Cycle (N-1) | Current Cycle (N) | | | |
| Power-Down | L | L | X | Maintain Power-Down | 14, 15 |
| | L | H | Deselect or NOP | Power-Down Exit | 11, 14 |
| Self-Refresh | L | L | X | Maintain Self-Refresh | 15, 16 |
| | L | H | Deselect or NOP | Self-Refresh Exit | 8, 12, 16 |
| Bank Activate | H | L | Deselect or NOP | Active Power-Down Entry | 11, 13, 14 |
| Reading | H | L | Deselect or NOP | Power-Down Entry | 11, 13, 14, 17 |
| Writing | H | L | Deselect or NOP | Power-Down Entry | 11, 13, 14, 17 |
| Precharging | H | L | Deselect or NOP | Power-Down Entry | 11, 13, 14, 17 |
| Refreshing | H | L | Deselect or NOP | Precharge Power-Down Entry | 11 |
| All Banks Idle | H | L | Deselect or NOP | Precharge Power-Down Entry | 11, 13, 14, 18 |
| | | L | Refresh | Self-Refresh | 9, 13, 18 |
| For more details with all signals, see Command Truth Table on the previous pages. | | | | | 10 |

Notes:

- CKE (N) is the logic state of CKE at clock edge N; CKE (N-1) was the state of CKE at the previous clock edge.
- Current state is defined as the state of the DDR3 SDRAM immediately prior to clock edge N.
- COMMAND (N) is the command registered at clock edge N, and ACTION (N) is a result of COMMAND (N), ODT is not included here.
- All states and sequences not shown are illegal or reserved unless explicitly described elsewhere in this document.
- The state of ODT does not affect the states described in this table. The ODT function is not available during Self-Refresh.
- CKE must be registered with the same value on tCKEmin consecutive positive clock edges. CKE must remain at the valid input level the entire time it takes to achieve the tCKEmin clocks of registration. Thus, after any CKE transition, CKE may not transition from its valid level during the time period of tIS + tCKEmin + tIH.
- Deselect and NOP are defined in the Command Truth Table.
- On Self-Refresh Exit, Deselect or NOP commands must be issued on every clock edge occurring during the tXS period. Read or ODT commands may be issued only after tXSDLL is satisfied.
- Self-Refresh mode can only be entered from the All Banks Idle state.
- Must be a legal command as defined in the Command Truth Table.
- Valid commands for Power-Down Entry and Exit are NOP and Deselect only.
- Valid commands for Self-Refresh Exit are NOP and Deselect only.
- Self-Refresh can not be entered during Read or Write operations.
- The Power-Down does not perform any refresh operations.
- "X" means "don't care" (including floating around VREF) in Self-Refresh and Power-Down. It also applies to Address pins.
- VREF (Both VREFDQ and VREFCA) must be maintained during Self-Refresh operation.
- If all banks are closed at the conclusion of the read, write or precharge command, then Precharge Power-Down is entered, otherwise Active Power-Down is entered.
- "Idle state" is defined as all banks are closed (tRP, tDAL, etc. satisfied), no data bursts are in progress, CKE is high, and all timings from previous operations are satisfied (tMRD, tMOD, tRFC, tZQinit, tZQoper, tZQCS, etc.) as well as all Self-Refresh exit and Power-Down Exit parameters are satisfied (tXS, tXP, tXPDLL, etc.).



Absolute Maximum Ratings

Absolute Maximum DC Ratings

| Symbol | Parameter | Rating | Units | Notes |
|------------------------------------|---|--------------|-------|-------|
| V _{DD} | Voltage on V _{DD} relative to V _{SS} | -0.4 ~ 1.975 | V | 1, 3 |
| V _{DDQ} | Voltage on V _{DDQ} relative to V _{SS} | -0.4 ~ 1.975 | V | 1, 3 |
| V _{IN} , V _{OUT} | Voltage on any pin relative to V _{SS} | -0.4 ~ 1.975 | V | 1 |
| V _{DDSPD} | Voltage on V _{DDSPD} relative to V _{SS} | 1.7 ~ 3.6 | V | 1 |
| T _{STG} | Storage Temperature | -50 to +100 | °C | 1, 2 |

Notes:

- Stresses greater than those listed under “Absolute Maximum Ratings” may cause permanent damage to the device. This is a stress rating only and functional operation of the device at these or any other conditions above those indicated in the operational sections of this specification is not implied. Exposure to absolute maximum rating conditions for extended periods may affect reliability.
- Storage Temperature is the case surface temperature on the center/top side of the DRAM.
- V_{DD} and V_{DDQ} must be within 300 mV of each other at all times and V_{REF} must be not greater than 0.6*V_{DDQ}. When V_{DD} and V_{DDQ} are less than 500 mV; V_{REF} may be equal to or less than 300 mV.

Operating Temperature Range

| Symbol | Parameter | Range | Units | Notes |
|-------------------|---|----------|-------|-------|
| T _{OPER} | Normal Operating Temperature Range (Case) | 0 to 85 | °C | 1, 2 |
| | Extended Operating Temperature Range (Optional) | 85 to 95 | °C | 1, 3 |

Notes:

- Operating Temperature T_{OPER} is the case surface temperature on the center/top side of the DRAM.
- The Normal Temperature Range specifies the temperatures where all DRAM specifications will be supported. During operation, the DRAM case temperature must be maintained between 0°C and 85°C under all operating conditions.
- Some applications require operation of the DRAM in the Extended Temperature Range between 85°C and 95°C case temperature. Full specifications are supported in this range, but the following additional conditions apply:
 - Refresh commands must be doubled in frequency, therefore reducing the Refresh interval t_{REFI} to 3.9µs. It is also possible to specify a component with 1X refresh (t_{REFI} to 7.8µs) in the Extended Temperature Range. Please refer to the SPD for option availability.
 - If Self-Refresh operation is required in the Extended Temperature Range, then it is mandatory to either use the Manual Self-Refresh mode with Extended Temperature Range capability (MR2 A6 = 0b and MR2 A7 = 1b) or enable the optional Auto Self-Refresh mode (MR2 A6 = 1b and MR2 A7 = 0b). Please refer to the SPD for option availability.



Recommended DC Operating Conditions

| Symbol | Parameter | Rating | | | Units | Notes |
|--------------------|---------------------------|--------|------|--------|-------|-------|
| | | Min | Typ | Max | | |
| V _{DD} | Supply Voltage | 1.425 | 1.5 | 1.575 | V | 1, 2 |
| V _{DDQ} | Supply Voltage for Output | 1.425 | 1.5 | 1.575 | V | 1 |
| V _{DDSPD} | SPD Supply Voltage | 3.0 | 3.3 | 3.6 | V | |
| V _{TT} | SPD Supply Voltage | 0.7125 | 0.75 | 0.7875 | V | 3 |
| V _{SS} | Ground | 0 | 0 | 0 | V | |

Notes:

- Under all conditions, V_{DDQ} must be less than or equal to V_{DD}.
- V_{DDQ} tracks with V_{DD}. AC parameters are measured with V_{DD} and V_{DDQ} tied together.
- V_{TT} = V_{DDQ}/2

AC and DC Logic Input Levels for Single-Ended Signals

| Symbol | Parameter | DDR3-800, 1066, & 1333 | | Units | Notes |
|---------------------|---------------------|--------------------------|--------------------------|-------|-------|
| | | Min | Max | | |
| V _{IH(DC)} | DC input logic high | V _{REF} + 0.100 | V _{DD} | V | 1 |
| V _{IL(DC)} | DC input logic low | V _{SS} | V _{REF} - 0.100 | V | 1 |
| V _{IH(AC)} | AC input logic high | V _{REF} + 0.175 | - | V | 1 |
| V _{IL(AC)} | AC input logic low | - | V _{REF} - 0.175 | V | 1 |

Notes:

- For DQ and DM, V_{REF} = V_{REFDQ}. For input only pins except RESET#, V_{REF} = V_{REFCA}.
- The ac peak noise on V_{REF} may not allow V_{REF} to deviate from V_{REF(DC)} by more than ±1% V_{DD} (for reference: approx. ±15mV).
- For reference: approx. V_{DD}/2 ± 15mV.

Differential swing requirements for clock ($\overline{CK/CK}$) and strobe ($\overline{DQS/DQS}$)

| Symbol | Parameter | DDR3-800, 1066, & 1333 | | Units | Notes |
|------------------|-------------------------------|------------------------------|------------------------------|-------|-------|
| | | Min | Max | | |
| V_{IHDIFF} | Differential input logic high | 0.200 | Note 3 | V | 1 |
| V_{ILDIFF} | Differential input logic high | Note 3 | -0.200 | V | 1 |
| $V_{IHDIFF(AC)}$ | AC input logic high | $2 * (V_{IH(AC)} - V_{REF})$ | Note 3 | V | 2 |
| $V_{ILDIFF(AC)}$ | AC input logic low | Note 3 | $2 * (V_{REF} - V_{IL(AC)})$ | V | 2 |

Notes:

- Used to define a differential signal slew-rate.
- For $\overline{CK/CK}$, use $V_{IH}/V_{IL(AC)}$ of ADD/CMD and V_{REFCA} ; for $\overline{DQS/DQS}$, use $V_{IH}/V_{IL(AC)}$ of DQs and V_{REFDQ} ; if a reduced AC-high or AC-low level is used for a signal group, then the reduced level applies also here.
- These values are not defined, however the single-ended signals \overline{CK} , \overline{CK} , \overline{DQS} , \overline{DQS} need to be within the respective limits ($V_{IH(DC)max}$, $V_{IL(DC)min}$) for single-ended signals as well as the limitations for overshoot and undershoot.

Single-ended Input Slew Rate Definition

| Description | Measured | | Defined by | Applicable for |
|----------------------------------|-----------------|-----------------|--|-------------------------------|
| | from | to | | |
| Input slew rate for rising edge | V_{REF} | $V_{IL(AC)min}$ | $\frac{V_{IH(AC)min} - V_{REF}}{\Delta TRS}$ | Setup (t_{IS} , t_{DS}) |
| Input slew rate for falling edge | V_{REF} | $V_{IL(AC)max}$ | $\frac{V_{REF} - V_{IL(AC)max}}{\Delta TFS}$ | |
| Input slew rate for rising edge | $V_{IL(DC)max}$ | V_{REF} | $\frac{V_{REF} - V_{IL(DC)max}}{\Delta TFH}$ | Hold (t_{IH} , t_{DH}) |
| Input slew rate for falling edge | $V_{IL(DC)min}$ | V_{REF} | $\frac{V_{IH(DC)min} - V_{REF}}{\Delta TRH}$ | |



Input/Output Capacitance

| Speed Bin | | DDR3-800 | | DDR3-1066 | | DDR3-1333 | | Units | Notes |
|--|------------|----------|-----|-----------|-----|-----------|-----|-------|---------|
| Parameter | Symbol | min | max | min | max | min | max | | |
| Input/output capacitance (DQ, DM, \overline{DQS} , \overline{DQS} , TDQS, \overline{TDQS}) | C_{IO} | 3.0 | 6.0 | 3.0 | 5.4 | 3.0 | 5.0 | pF | 1, 2 |
| Input/output capacitance delta, (DQ, DM, \overline{DQS} , \overline{DQS} , TDQS, \overline{TDQS}) | C_{DIO} | -1.0 | 0.6 | -1.0 | 0.6 | -1.0 | 0.6 | pF | 2, 8 |
| Input/output capacitance delta (DQS and \overline{DQS}) | C_{DDQS} | 0 | 0.4 | 0 | 0.4 | 0 | 0.3 | pF | 2, 4 |
| Input capacitance, CK and \overline{CK} | C_{CK} | 2.0 | 3.0 | 2.0 | 3.0 | 2.0 | 3.0 | pF | 2 |
| Input capacitance delta, CK and \overline{CK} | C_{DCK} | - | 0.5 | - | 0.5 | - | 0.5 | pF | 2, 3 |
| Input capacitance, (ADD, CMD, CTRL input-only pins) | C_I | 1.5 | 2.5 | 1.5 | 2.5 | 1.5 | 2.5 | pF | 2, 5 |
| Input capacitance delta, (ADD, CMD, CTRL input-only pins) | C_{DI} | - | 0.5 | - | 0.5 | - | 0.5 | pF | 2, 6, 7 |

Notes:

1. Although the DM, TDQS and \overline{TDQS} pins have different functions, the loading matches DQ and DQS.
2. This parameter is not subject to production test. It is verified by design and characterization.
3. Absolute value of $C_{CK} - C_{\overline{CK}}$
4. Absolute value of $C_{IO}(DQS) - C_{IO}(\overline{DQS})$
5. C_I applies to ODT, \overline{CS} , CKE, A0-A15, BA0-BA2, \overline{RAS} , \overline{CAS} , \overline{WE} .
6. C_{DI} applies to ODT, \overline{CS} and CKE, A0-A15, BA0-BA2, \overline{RAS} , \overline{CAS} and \overline{WE}
7. $C_{DI} = C_I - 0.5 * (C_I(CK) + C_I(\overline{CK}))$
8. $C_{DIO} = C_{IO}(DQ,DM) - 0.5 * (C_{IO}(DQS) + C_{IO}(\overline{DQS}))$



IDD and IDDQ Measurement-Loop Patterns Timing

| Speed Bin | DDR3-800 | | DDR3-1066 | | | DDR3-1333 | | Units |
|--------------------------|----------|-------|-----------|-------|-------|-----------|-------|-------|
| | 5-5-5 | 6-6-6 | 6-6-6 | 7-7-7 | 8-8-8 | 8-8-8 | 9-9-9 | |
| t _{CKmin} (IDD) | 2.5 | | 1.875 | | | 1.5 | | ns |
| CL(IDD) | 5 | 6 | 6 | 7 | 8 | 8 | 9 | nCK |
| nRCD | 5 | 6 | 6 | 7 | 8 | 8 | 9 | nCK |
| nRC | 20 | 21 | 26 | 27 | 28 | 32 | 33 | nCK |
| nRAS | 15 | | 20 | | | 24 | | nCK |
| nRP | 5 | 6 | 6 | 7 | 8 | 8 | 9 | nCK |
| nFAW | 16 | | 20 | | | 20 | | nCK |
| nRRD | 4 | | 6 | | | 5 | | nCK |
| nRFC | 64 | | 86 | | | 107 | | nCK |

Definitions for IDD Measurement Conditions

- “0” and “LOW” is defined as $V_{IN} \leq V_{ILAC(max)}$.
- “1” and “HIGH” is defined as $V_{IN} \geq V_{IHAC(min)}$.
- “MID-LEVEL” is defined as inputs that are $V_{REF} = V_{DD}/2$.
- Timings used for IDD and IDDQ Measurement-Loop Patterns are provided in IDD and IDDQ Timings on page 20.
- Basic IDD and IDDQ Measurement Conditions are described in IDD Measurement Conditions on pages 21-23.
- Detailed IDD and IDDQ Measurement-Loop Patterns are described in IDD Measurement-Loop Patterns on pages 24-29.
- IDD Measurements are done after properly initializing the DDR3 SDRAM. This includes but is not limited to setting:
 - RON = RZQ/7 (34 Ohm in MR1);
 - Qoff = 0_B (Output Buffer enabled in MR1);
 - RTT_Nom = RZQ/6 (40 Ohm in MR1);
 - RTT_Wr = RZQ/2 (120 Ohm in MR2);
 - TDQS Feature disabled in MR1.
- **Attention:** The IDD and IDDQ Measurement-Loop Patterns need to be executed at least one time before actual IDD or IDDQ measurement is started.
- Define $\underline{D} = \{\overline{CS}, \overline{RAS}, \overline{CAS}, \overline{WE}\} = \{\text{HIGH}, \text{LOW}, \text{LOW}, \text{LOW}\}$
- Define $\overline{D} = \{\overline{CS}, \overline{RAS}, \overline{CAS}, \overline{WE}\} = \{\text{HIGH}, \text{HIGH}, \text{HIGH}, \text{HIGH}\}$



IDD Measurement Conditions

| Symbol | Description | Conditions |
|--------------------|--|---|
| I _{DD0} | Operating One Bank Active-Precharge Current | CKE: High; External clock: On; tCK, nRC, nRAS, CL: See IDD and IDDQ Timings on page 20; BL: 8 ¹ ; AL: 0; \overline{CS} : High between ACT and PRE; Command, Address, Bank Address Inputs: partially toggling according to IDD0 Measurement-Loop Pattern on page 24; Data I/O: MID-LEVEL; DM: stable at 0; Bank Activity: Cycling with one bank active at a time: 0,0,1,1,2,2,... (See IDD0 Measurement-Loop Pattern on page 24); Output Buffer and RTT: Enabled in Mode Registers ² ; ODT Signal: stable at 0; Pattern Details: See IDD0 Measurement-Loop Pattern on page 24. |
| I _{DD1} | Operating One Bank Active-Read-Precharge Current | CKE: High; External clock: On; tCK, nRC, nRAS, nRCD, CL: See IDD and IDDQ Timings on page 20; BL: 8 ^{1, 6} ; AL: 0; \overline{CS} : High between ACT, RD and PRE; Command, Address, Bank Address Inputs, Data I/O: partially toggling according to IDD1 Measurement-Loop Pattern on page 25; DM: stable at 0; Bank Activity: Cycling with one bank active at a time: 0,0,1,1,2,2,... (See IDD1 Measurement-Loop Pattern on page 25); Output Buffer and RTT: Enabled in Mode Registers ² ; ODT Signal: stable at 0; Pattern Details: See IDD1 Measurement-Loop Pattern on page 25. |
| I _{DD2P0} | Precharge Power-Down Current Slow Exit | CKE: Low; External clock: On; tCK, CL: See IDD and IDDQ Timings on page 20; BL: 8 ¹ ; AL: 0; \overline{CS} : stable at 1; Command, Address, Bank Address Inputs: stable at 0; Data I/O: MID-LEVEL; DM: stable at 0; Bank Activity: all banks closed; Output Buffer and RTT: Enabled in Mode Registers ² ; ODT Signal: stable at 0; Precharge Power Down Mode: Slow Exit ³ . |
| I _{DD2P1} | Precharge Power-Down Current Fast Exit | CKE: Low; External clock: On; tCK, CL: See IDD and IDDQ Timings on page 20; BL: 8 ¹ ; AL: 0; \overline{CS} : stable at 1; Command, Address, Bank Address Inputs: stable at 0; Data I/O: MID-LEVEL; DM: stable at 0; Bank Activity: all banks closed; Output Buffer and RTT: Enabled in Mode Registers ² ; ODT Signal: stable at 0; Precharge Power Down Mode: Fast Exit ³ . |
| I _{DD2Q} | Precharge Quiet Standby Current | CKE: High; External clock: On; tCK, CL: See IDD and IDDQ Timings on page 20; BL: 8 ¹ ; AL: 0; \overline{CS} : stable at 1; Command, Address, Bank Address Inputs: stable at 0; Data I/O: MID-LEVEL; DM: stable at 0; Bank Activity: all banks closed; Output Buffer and RTT: Enabled in Mode Registers ² ; ODT Signal: stable at 0. |
| I _{DD2N} | Precharge Standby Current | CKE: High; External clock: On; tCK, CL: See IDD and IDDQ Timings on page 20; BL: 8 ¹ ; AL: 0; \overline{CS} : stable at 1; Command, Address, Bank Address Inputs: partially toggling according to IDD2N and IDD3N Measurement-Loop Pattern on page 26; Data I/O: MID-LEVEL; DM: stable at 0; Bank Activity: all banks closed; Output Buffer and RTT: Enabled in Mode Registers ² ; ODT Signal: stable at 0; Pattern Details: See IDD2N and IDD3N Measurement-Loop Pattern on page 26. |



IDD Measurement Conditions (Contd.)

| Symbol | Description | Conditions |
|--------------------|-------------------------------|--|
| I _{DD2NT} | Precharge Standby ODT Current | CKE: High; External clock: On; tCK, CL: See IDD and IDDQ Timings on page 20; BL: 8 ¹ ; AL: 0; \overline{CS} : stable at 1; Command, Address, Bank Address Inputs: partially toggling according to IDD2NT Measurement-Loop Pattern on page 26; Data I/O: MID-LEVEL; DM: stable at 0; Bank Activity: all banks closed; Output Buffer and RTT: Enabled in Mode Registers ² ; ODT Signal: toggling according to IDD2NT Measurement-Loop Pattern on page 26; Pattern Details: See IDD2NT Measurement-Loop Pattern on page 26. |
| I _{DD3P} | Active Power Down Current | CKE: Low; External clock: On; tCK, CL: See IDD and IDDQ Timings on page 20; BL: 8 ¹ ; AL: 0; \overline{CS} : stable at 1; Command, Address, Bank Address Inputs: stable at 0; Data I/O: MID-LEVEL; DM: stable at 0; Bank Activity: all banks open; Output Buffer and RTT: Enabled in Mode Registers ² ; ODT Signal: stable at 0. |
| I _{DD3N} | Active Standby Current | CKE: High; External clock: On; tCK, CL: See IDD and IDDQ Timings on page 20; BL: 8 ¹ ; AL: 0; \overline{CS} : stable at 1; Command, Address, Bank Address Inputs: partially toggling according to IDD2N and IDD3N Measurement-Loop Pattern on page 26; Data I/O: MID-LEVEL; DM: stable at 0; Bank Activity: all banks open; Output Buffer and RTT: Enabled in Mode Registers ² ; ODT Signal: stable at 0; Pattern Details: See IDD2N and IDD3N Measurement-Loop Pattern on page 26. |
| I _{DD4R} | Operating Burst Read Current | CKE: High; External clock: On; tCK, CL: See IDD and IDDQ Timings on page 20; BL: 8 ^{1, 6} ; AL: 0; \overline{CS} : High between RD; Command, Address, Bank Address Inputs: partially toggling according to IDD4R Measurement-Loop Pattern on page 27; Data I/O: seamless read data burst with different data between one burst and the next one according to IDD4R Measurement-Loop Pattern on page 27; DM: stable at 0; Bank Activity: all banks open, RD commands cycling through banks: 0,0,1,1,2,2,... (See IDD4R Measurement-Loop Pattern on page 27); Output Buffer and RTT: Enabled in Mode Registers ² ; ODT Signal: stable at 0; Pattern Details: See IDD4R Measurement-Loop Pattern on page 27. |
| I _{DD4W} | Operating Burst Write Current | CKE: High; External clock: On; tCK, CL: See IDD and IDDQ Timings on page 20; BL: 8 ¹ ; AL: 0; \overline{CS} : High between WR; Command, Address, Bank Address Inputs: partially toggling according to IDD4W Measurement-Loop Pattern on page 27; Data I/O: seamless write data burst with different data between one burst and the next one according to IDD4W Measurement-Loop Pattern on page 27; DM: stable at 0; Bank Activity: all banks open, WR commands cycling through banks: 0,0,1,1,2,2,... (See IDD4W Measurement-Loop Pattern on page 27); Output Buffer and RTT: Enabled in Mode Registers ² ; ODT Signal: stable at HIGH; Pattern Details: See IDD4W Measurement-Loop Pattern on page 27. |



IDD Measurement Conditions (Contd.)

| Symbol | Description | Conditions |
|--------------------|--|--|
| I _{DD5B} | Burst Refresh Current | CKE: High; External clock: On; tCK, CL, nRFC: See IDD and IDDQ Timings on page 20; BL: 8 ¹ ; AL: 0; \overline{CS} : High between REF; Command, Address, Bank Address Inputs: partially toggling according to IDD5B Measurement-Loop Pattern on page 28; Data I/O: MID-LEVEL; DM: stable at 0; Bank Activity: REF command every nRFC (See IDD5B Measurement-Loop Pattern on page 28); Output Buffer and RTT: Enabled in Mode Registers ² ; ODT Signal: stable at 0; Pattern Details: See IDD5B Measurement-Loop Pattern on page 28. |
| I _{DD6} | Self-Refresh Current: Normal Temperature Range | T _{CASE} : 0 - 85°C; Auto Self-Refresh (ASR): Disabled ⁴ ; Self-Refresh Temperature Range (SRT): Normal ⁵ ; CKE: Low; External clock: Off; CK and CK#: LOW; CL: See IDD and IDDQ Timings on page 20; BL: 8 ¹ ; AL: 0; \overline{CS} , Command, Address, Bank Address, Data I/O: MID-LEVEL; DM: stable at 0; Bank Activity: Self-Refresh operation; Output Buffer and RTT: Enabled in Mode Registers ² ; ODT Signal: MID-LEVEL. |
| I _{DD6ET} | Self-Refresh Current: Extended Temperature Range | T _{CASE} : 85 - 95°C; Auto Self-Refresh (ASR): Disabled ⁴ ; Self-Refresh Temperature Range (SRT): Extended ⁵ ; CKE: Low; External clock: Off; CK and CK#: LOW; CL: See IDD and IDDQ Timings on page 20; BL: 8 ¹ ; AL: 0; \overline{CS} , Command, Address, Bank Address, Data I/O: MID-LEVEL; DM: stable at 0; Bank Activity: Extended Temperature Self-Refresh operation; Output Buffer and RTT: Enabled in Mode Registers ² ; ODT Signal: MID-LEVEL. |
| I _{DD7} | All Bank Interleave Read Current | CKE: High; External clock: On; tCK, nRC, nRAS, nRCD, nRRD, nFAW, CL: See IDD and IDDQ Timings on page 20; BL: 8 ^{1, 6} ; AL: CL-1; \overline{CS} : High between ACT and RDA; Command, Address, Bank Address Inputs: partially toggling according to IDD7 Measurement-Loop Pattern on page 28; Data I/O: read data bursts with different data between one burst and the next one according to IDD7 Measurement-Loop Pattern on page 28; DM: stable at 0; Bank Activity: two times interleaved cycling through banks (0, 1,...7) with different addressing, See IDD7 Measurement-Loop Pattern on page 28; Output Buffer and RTT: Enabled in Mode Registers ² ; ODT Signal: stable at 0; Pattern Details: See IDD7 Measurement-Loop Pattern on page 28. |

Notes:

1. Burst Length: BL8 fixed by MRS: set MR0 A[1,0]=00B.
2. Output Buffer Enable: set MR1 A[12] = 0B; set MR1 A[5,1] = 01B; RTT_Nom enable: set MR1 A[9,6,2] = 011B; RTT_Wr enable: set MR2 A[10,9] = 10B.
3. Precharge Power Down Mode: set MR0 A[12] = 0B for Slow Exit or MR0 A[12]=1B for Fast Exit.
4. Auto Self-Refresh (ASR): set MR2 A[6] = 0B to disable or 1B to enable feature.
5. Self-Refresh Temperature Range (SRT): set MR2 A[7] = 0B for normal or 1B for extended temperature range.
6. Read Burst Type: Nibble Sequential, set MR0 A[3] = 0B.



IDD Measurement Conditions (Contd.)

IDD0 Measurement-Loop Pattern¹

| CK, CK | CKE | Sub-Loop | Cycle Number | Command | CS | RAS | CAS | WE | ODT | BA[2:0] | A[15:11] | A[10] | A[9:7] | A[6:3] | A[2:0] | Data ² | | |
|----------|-------------|------------------------------------|--------------|--|----|-----|-----|----|-----|---------|----------|-------|--------|--------|--------|-------------------|---|---|
| toggling | Static High | 0 | 0 | ACT | 0 | 0 | 1 | 1 | 0 | 0 | 00 | 0 | 0 | 0 | 0 | - | | |
| | | | 1, 2 | D, D | 1 | 0 | 0 | 0 | 0 | 0 | 0 | 00 | 0 | 0 | 0 | 0 | - | |
| | | | 3, 4 | \bar{D}, \bar{D} | 1 | 1 | 1 | 1 | 0 | 0 | 0 | 00 | 0 | 0 | 0 | 0 | - | |
| | | | ... | Repeat pattern 1-4 until nRAS - 1. Truncate if necessary | | | | | | | | | | | | | | |
| | | | nRAS | PRE | 0 | 0 | 1 | 0 | 0 | 0 | 0 | 00 | 0 | 0 | 0 | 0 | - | |
| | | | ... | Repeat pattern 1-4 until nRC - 1. Truncate if necessary | | | | | | | | | | | | | | |
| | | | 1*nRC + 0 | ACT | 0 | 0 | 1 | 1 | 0 | 0 | 0 | 00 | 0 | 0 | F | 0 | - | |
| | | | 1*nRC + 1, 2 | D, D | 1 | 0 | 0 | 0 | 0 | 0 | 0 | 0 | 00 | 0 | 0 | F | 0 | - |
| | | | 1*nRC + 3, 4 | \bar{D}, \bar{D} | 1 | 1 | 1 | 1 | 0 | 0 | 0 | 0 | 00 | 0 | 0 | F | 0 | - |
| | | | ... | Repeat pattern nRC + 1-4 until 1*nRC + nRAS - 1. Truncate if necessary | | | | | | | | | | | | | | |
| | | | 1*nRC + nRAS | PRE | 0 | 0 | 1 | 0 | 0 | 0 | 0 | 00 | 0 | 0 | F | 0 | - | |
| | | | ... | Repeat pattern nRC + 1-4 until 2*nRC - 1. Truncate if necessary | | | | | | | | | | | | | | |
| | | 1 | 2*nRC | Repeat Sub-Loop 0, but BA[2:0] = 1 | | | | | | | | | | | | | | |
| | | 2 | 4*nRC | Repeat Sub-Loop 0, but BA[2:0] = 2 | | | | | | | | | | | | | | |
| | | 3 | 6*nRC | Repeat Sub-Loop 0, but BA[2:0] = 3 | | | | | | | | | | | | | | |
| | | 4 | 8*nRC | Repeat Sub-Loop 0, but BA[2:0] = 4 | | | | | | | | | | | | | | |
| | | 5 | 10*nRC | Repeat Sub-Loop 0, but BA[2:0] = 5 | | | | | | | | | | | | | | |
| 6 | 12*nRC | Repeat Sub-Loop 0, but BA[2:0] = 6 | | | | | | | | | | | | | | | | |
| 7 | 14*nRC | Repeat Sub-Loop 0, but BA[2:0] = 7 | | | | | | | | | | | | | | | | |

Notes:

- DM must be driven LOW all the time. DQS, \bar{DQS} are MID-LEVEL.
- DQ signals are MID-LEVEL.



IDD Measurement Conditions (Contd.)

IDD1 Measurement-Loop Pattern¹

| CK, CK | CKE | Sub-Loop | Cycle Number | Command | CS | RAS | CAS | WE | ODT | BA[2:0] | A[15:11] | A[10] | A[9:7] | A[6:3] | A[2:0] | Data ² | | |
|----------|-------------|------------------------------------|---|--|----|-----|-----|----|-----|---------|----------|-------|--------|--------|--------|-------------------|----------|--|
| toggling | Static High | 0 | 0 | ACT | 0 | 0 | 1 | 1 | 0 | 0 | 00 | 0 | 0 | 0 | 0 | - | | |
| | | | 1-2 | D, D | 1 | 0 | 0 | 0 | 0 | 0 | 0 | 00 | 0 | 0 | 0 | 0 | - | |
| | | | 3-4 | $\overline{D}, \overline{D}$ | 1 | 1 | 1 | 1 | 0 | 0 | 0 | 00 | 0 | 0 | 0 | 0 | - | |
| | | | ... | Repeat pattern 1-4 until nRCD - 1. Truncate if necessary | | | | | | | | | | | | | | |
| | | | nRCD | RD | 0 | 1 | 0 | 1 | 0 | 0 | 0 | 00 | 0 | 0 | 0 | 0 | 00000000 | |
| | | | ... | Repeat pattern 1-4 until nRAS - 1. Truncate if necessary | | | | | | | | | | | | | | |
| | | | nRAS | PRE | 0 | 0 | 1 | 0 | 0 | 0 | 0 | 00 | 0 | 0 | 0 | 0 | - | |
| | | | ... | Repeat pattern 1-4 until nRC - 1. Truncate if necessary | | | | | | | | | | | | | | |
| | | | 1*nRC + 0 | ACT | 0 | 0 | 1 | 1 | 0 | 0 | 00 | 0 | 0 | F | 0 | - | | |
| | | | 1*nRC + 1-2 | D, D | 1 | 0 | 0 | 0 | 0 | 0 | 00 | 0 | 0 | F | 0 | - | | |
| | | | 1*nRC + 3-4 | $\overline{D}, \overline{D}$ | 1 | 1 | 1 | 1 | 0 | 0 | 00 | 0 | 0 | F | 0 | - | | |
| | | | ... | Repeat pattern nRC + 1-4 until 1*nRC + nRCD - 1. Truncate if necessary | | | | | | | | | | | | | | |
| | | | 1*nRC + nRCD | RD | 0 | 1 | 0 | 1 | 0 | 0 | 00 | 0 | 0 | F | 0 | 00110011 | | |
| | | | ... | Repeat pattern nRC + 1-4 until 1*nRC + nRAS - 1. Truncate if necessary | | | | | | | | | | | | | | |
| | | 1*nRC + nRAS | PRE | 0 | 0 | 1 | 0 | 0 | 0 | 00 | 0 | 0 | F | 0 | - | | | |
| | | ... | Repeat pattern nRC + 1-4 until 2*nRC - 1. Truncate if necessary | | | | | | | | | | | | | | | |
| | | 1 | 2*nRC | Repeat Sub-Loop 0, but BA[2:0] = 1 | | | | | | | | | | | | | | |
| | | 2 | 4*nRC | Repeat Sub-Loop 0, but BA[2:0] = 2 | | | | | | | | | | | | | | |
| | | 3 | 6*nRC | Repeat Sub-Loop 0, but BA[2:0] = 3 | | | | | | | | | | | | | | |
| | | 4 | 8*nRC | Repeat Sub-Loop 0, but BA[2:0] = 4 | | | | | | | | | | | | | | |
| | | 5 | 10*nRC | Repeat Sub-Loop 0, but BA[2:0] = 5 | | | | | | | | | | | | | | |
| 6 | 12*nRC | Repeat Sub-Loop 0, but BA[2:0] = 6 | | | | | | | | | | | | | | | | |
| 7 | 14*nRC | Repeat Sub-Loop 0, but BA[2:0] = 7 | | | | | | | | | | | | | | | | |

Notes:

- DM must be driven LOW all the time. DQS, \overline{DQS} are used according to RD Commands, otherwise MID-LEVEL.
- Burst Sequence driven on each DQ signal by Read Command. Outside burst operation, DQ signals are MID-LEVEL.



IDD Measurement Conditions (Contd.)

IDD2N and IDD3N Measurement-Loop Pattern¹

| CK, CK | CKE | Sub-Loop | Cycle Number | Command | CS | RAS | CAS | WE | ODT | BA[2:0] | A[15:11] | A[10] | A[9:7] | A[6:3] | A[2:0] | Data ² | |
|----------|-------------|------------------------------------|--------------|------------------------------------|----|-----|-----|----|-----|---------|----------|-------|--------|--------|--------|-------------------|---|
| toggling | Static High | 0 | 0 | D | 1 | 0 | 0 | 0 | 0 | 0 | 00 | 0 | 0 | 0 | 0 | - | |
| | | | 1 | D | 1 | 0 | 0 | 0 | 0 | 0 | 0 | 00 | 0 | 0 | 0 | 0 | - |
| | | | 2 | D | 1 | 1 | 1 | 1 | 0 | 0 | 0 | 00 | 0 | 0 | F | 0 | - |
| | | | 3 | D | 1 | 1 | 1 | 1 | 0 | 0 | 0 | 00 | 0 | 0 | F | 0 | - |
| | | 1 | 4-7 | Repeat Sub-Loop 0, but BA[2:0] = 1 | | | | | | | | | | | | | |
| | | 2 | 8-11 | Repeat Sub-Loop 0, but BA[2:0] = 2 | | | | | | | | | | | | | |
| | | 3 | 12-15 | Repeat Sub-Loop 0, but BA[2:0] = 3 | | | | | | | | | | | | | |
| | | 4 | 16-19 | Repeat Sub-Loop 0, but BA[2:0] = 4 | | | | | | | | | | | | | |
| | | 5 | 20-23 | Repeat Sub-Loop 0, but BA[2:0] = 5 | | | | | | | | | | | | | |
| | | 6 | 24-27 | Repeat Sub-Loop 0, but BA[2:0] = 6 | | | | | | | | | | | | | |
| 7 | 28-31 | Repeat Sub-Loop 0, but BA[2:0] = 7 | | | | | | | | | | | | | | | |

Notes:

- DM must be driven LOW all the time. DQS, \overline{DQS} are MID-LEVEL.
- DQ signals are MID-LEVEL.

IDD2NT Measurement-Loop Pattern¹

| CK, CK | CKE | Sub-Loop | Cycle Number | Command | CS | RAS | CAS | WE | ODT | BA[2:0] | A[15:11] | A[10] | A[9:7] | A[6:3] | A[2:0] | Data ² | |
|----------|-------------|--|--------------|--|----|-----|-----|----|-----|---------|----------|-------|--------|--------|--------|-------------------|---|
| toggling | Static High | 0 | 0 | D | 1 | 0 | 0 | 0 | 0 | 0 | 00 | 0 | 0 | 0 | 0 | - | |
| | | | 1 | D | 1 | 0 | 0 | 0 | 0 | 0 | 0 | 00 | 0 | 0 | 0 | 0 | - |
| | | | 2 | D | 1 | 1 | 1 | 1 | 0 | 0 | 0 | 00 | 0 | 0 | F | 0 | - |
| | | | 3 | D | 1 | 1 | 1 | 1 | 0 | 0 | 0 | 00 | 0 | 0 | F | 0 | - |
| | | 1 | 4-7 | Repeat Sub-Loop 0, but ODT = 0 and BA[2:0] = 1 | | | | | | | | | | | | | |
| | | 2 | 8-11 | Repeat Sub-Loop 0, but ODT = 1 and BA[2:0] = 2 | | | | | | | | | | | | | |
| | | 3 | 12-15 | Repeat Sub-Loop 0, but ODT = 1 and BA[2:0] = 3 | | | | | | | | | | | | | |
| | | 4 | 16-19 | Repeat Sub-Loop 0, but ODT = 0 and BA[2:0] = 4 | | | | | | | | | | | | | |
| | | 5 | 20-23 | Repeat Sub-Loop 0, but ODT = 0 and BA[2:0] = 5 | | | | | | | | | | | | | |
| | | 6 | 24-27 | Repeat Sub-Loop 0, but ODT = 1 and BA[2:0] = 6 | | | | | | | | | | | | | |
| 7 | 28-31 | Repeat Sub-Loop 0, but ODT = 1 and BA[2:0] = 7 | | | | | | | | | | | | | | | |

Notes:

- DM must be driven LOW all the time. DQS, \overline{DQS} are MID-LEVEL.
- DQ signals are MID-LEVEL.



IDD Measurement Conditions (Contd.)

IDD4R Measurement-Loop Pattern¹

| CK, CK | CKE | Sub-Loop | Cycle Number | Command | CS | RAS | CAS | WE | ODT | BA[2:0] | A[15:11] | A[10] | A[9:7] | A[6:3] | A[2:0] | Data ² | |
|----------|-------------|----------|--------------|------------------------------------|----|-----|-----|----|-----|---------|----------|-------|--------|--------|--------|-------------------|----------|
| toggling | Static High | 0 | 0 | RD | 0 | 1 | 0 | 1 | 0 | 0 | 00 | 0 | 0 | 0 | 0 | 00000000 | |
| | | | 1 | D | 1 | 0 | 0 | 0 | 0 | 0 | 0 | 00 | 0 | 0 | 0 | 0 | - |
| | | | 2-3 | $\overline{D}, \overline{D}$ | 1 | 1 | 1 | 1 | 0 | 0 | 0 | 00 | 0 | 0 | 0 | 0 | - |
| | | | 4 | RD | 0 | 1 | 0 | 1 | 0 | 0 | 0 | 00 | 0 | 0 | F | 0 | 00110011 |
| | | | 5 | D | 1 | 0 | 0 | 0 | 0 | 0 | 0 | 00 | 0 | 0 | F | 0 | - |
| | | | 6-7 | $\overline{D}, \overline{D}$ | 1 | 1 | 1 | 1 | 0 | 0 | 0 | 00 | 0 | 0 | F | 0 | - |
| | | 1 | 8-15 | Repeat Sub-Loop 0, but BA[2:0] = 1 | | | | | | | | | | | | | |
| | | 2 | 16-23 | Repeat Sub-Loop 0, but BA[2:0] = 2 | | | | | | | | | | | | | |
| | | 3 | 24-31 | Repeat Sub-Loop 0, but BA[2:0] = 3 | | | | | | | | | | | | | |
| | | 4 | 32-39 | Repeat Sub-Loop 0, but BA[2:0] = 4 | | | | | | | | | | | | | |
| | | 5 | 40-47 | Repeat Sub-Loop 0, but BA[2:0] = 5 | | | | | | | | | | | | | |
| | | 6 | 48-55 | Repeat Sub-Loop 0, but BA[2:0] = 6 | | | | | | | | | | | | | |
| | | 7 | 56-63 | Repeat Sub-Loop 0, but BA[2:0] = 7 | | | | | | | | | | | | | |

Notes:

- DM must be driven LOW all the time. DQS, \overline{DQS} are MID-LEVEL.
- DQ signals are MID-LEVEL.

IDD4W Measurement-Loop Pattern¹

| CK, CK | CKE | Sub-Loop | Cycle Number | Command | CS | RAS | CAS | WE | ODT | BA[2:0] | A[15:11] | A[10] | A[9:7] | A[6:3] | A[2:0] | Data ² | |
|----------|-------------|----------|--------------|------------------------------------|----|-----|-----|----|-----|---------|----------|-------|--------|--------|--------|-------------------|--|
| toggling | Static High | 0 | 0 | WR | 0 | 1 | 0 | 0 | 1 | 0 | 00 | 0 | 0 | 0 | 0 | 00000000 | |
| | | | 1 | D | 1 | 0 | 0 | 0 | 1 | 0 | 00 | 0 | 0 | 0 | 0 | - | |
| | | | 2-3 | $\overline{D}, \overline{D}$ | 1 | 1 | 1 | 1 | 1 | 0 | 00 | 0 | 0 | 0 | 0 | - | |
| | | | 4 | WR | 0 | 1 | 0 | 0 | 1 | 0 | 00 | 0 | 0 | F | 0 | 00110011 | |
| | | | 5 | D | 1 | 0 | 0 | 0 | 1 | 0 | 00 | 0 | 0 | F | 0 | - | |
| | | | 6-7 | $\overline{D}, \overline{D}$ | 1 | 1 | 1 | 1 | 1 | 0 | 00 | 0 | 0 | F | 0 | - | |
| | | 1 | 8-15 | Repeat Sub-Loop 0, but BA[2:0] = 1 | | | | | | | | | | | | | |
| | | 2 | 16-23 | Repeat Sub-Loop 0, but BA[2:0] = 2 | | | | | | | | | | | | | |
| | | 3 | 24-31 | Repeat Sub-Loop 0, but BA[2:0] = 3 | | | | | | | | | | | | | |
| | | 4 | 32-39 | Repeat Sub-Loop 0, but BA[2:0] = 4 | | | | | | | | | | | | | |
| | | 5 | 40-47 | Repeat Sub-Loop 0, but BA[2:0] = 5 | | | | | | | | | | | | | |
| | | 6 | 48-55 | Repeat Sub-Loop 0, but BA[2:0] = 6 | | | | | | | | | | | | | |
| | | 7 | 56-63 | Repeat Sub-Loop 0, but BA[2:0] = 7 | | | | | | | | | | | | | |

Notes:

- DM must be driven LOW all the time. DQS, \overline{DQS} are MID-LEVEL.
- DQ signals are MID-LEVEL.



IDD Measurement Conditions (Contd.)

IDD5B Measurement-Loop Pattern¹

| CK, CK | CKE | Sub-Loop | Cycle Number | Command | CS | RAS | CAS | WE | ODT | BA[2:0] | A[15:11] | A[10] | A[9:7] | A[6:3] | A[2:0] | Data ² | |
|----------|-------------|---|--------------|------------------------------------|----|-----|-----|----|-----|---------|----------|-------|--------|--------|--------|-------------------|---|
| toggling | Static High | 0 | 0 | REF | 0 | 0 | 0 | 1 | 0 | 0 | 00 | 0 | 0 | 0 | 0 | - | |
| | | 1 | 1-2 | D | 1 | 0 | 0 | 0 | 0 | 0 | 0 | 00 | 0 | 0 | 0 | 0 | - |
| | | | 3-4 | \overline{D} | 1 | 1 | 1 | 1 | 1 | 0 | 0 | 00 | 0 | 0 | F | 0 | - |
| | | | 5-8 | Repeat cycles 1-4, but BA[2:0] = 1 | | | | | | | | | | | | | |
| | | | 9-12 | Repeat cycles 1-4, but BA[2:0] = 2 | | | | | | | | | | | | | |
| | | | 13-16 | Repeat cycles 1-4, but BA[2:0] = 3 | | | | | | | | | | | | | |
| | | | 17-20 | Repeat cycles 1-4, but BA[2:0] = 4 | | | | | | | | | | | | | |
| | | | 21-24 | Repeat cycles 1-4, but BA[2:0] = 5 | | | | | | | | | | | | | |
| | | | 25-28 | Repeat cycles 1-4, but BA[2:0] = 6 | | | | | | | | | | | | | |
| | | | 29-32 | Repeat cycles 1-4, but BA[2:0] = 7 | | | | | | | | | | | | | |
| 2 | 33-nRFC - 1 | Repeat Sub-Loop 1 until nRFC - 1. Truncate if necessary | | | | | | | | | | | | | | | |

Notes:

- DM must be driven LOW all the time. DQS, \overline{DQS} are MID-LEVEL.
- DQ signals are MID-LEVEL.

IDD7 Measurement-Loop Pattern¹

ATTENTION: Sub-Loops 10-19 have inverse A[6:3] Pattern and Data Pattern than Sub-Loops 0-9

| CK, CK | CKE | Sub-Loop | Cycle Number | Command | CS | RAS | CAS | WE | ODT | BA[2:0] | A[15:11] | A[10] | A[9:7] | A[6:3] | A[2:0] | Data ² | |
|----------|-------------|--|---|---------------------------------------|----|-----|-----|----|-----|---------|----------|-------|--------|--------|--------|-------------------|---|
| toggling | Static High | 0 | 0 | ACT | 0 | 0 | 1 | 1 | 0 | 0 | 00 | 0 | 0 | 0 | 0 | - | |
| | | | 1 | RDA | 0 | 1 | 0 | 1 | 0 | 0 | 00 | 1 | 0 | 0 | 0 | 00000000 | |
| | | | 2 | D | 1 | 0 | 0 | 0 | 0 | 0 | 0 | 00 | 0 | 0 | 0 | 0 | - |
| | | | ... | Repeat above D Command until nRRD - 1 | | | | | | | | | | | | | |
| | | 1 | nRRD | ACT | 0 | 0 | 1 | 1 | 0 | 1 | 00 | 0 | 0 | F | 0 | - | |
| | | | nRRD + 1 | RDA | 0 | 1 | 0 | 1 | 0 | 1 | 00 | 1 | 0 | F | 0 | 00110011 | |
| | | | nRRD + 2 | D | 1 | 0 | 0 | 0 | 0 | 1 | 00 | 0 | 0 | F | 0 | - | |
| | | ... | Repeat above D Command until 2*nRRD - 1 | | | | | | | | | | | | | | |
| | | 2 | 2*nRRD | Repeat Sub-Loop 0, but BA[2:0] = 2 | | | | | | | | | | | | | |
| | | 3 | 3*nRRD | Repeat Sub-Loop 1, but BA[2:0] = 3 | | | | | | | | | | | | | |
| 4 | 4*nRRD | D | 1 | 0 | 0 | 0 | 0 | 0 | 3 | 00 | 0 | 0 | F | 0 | - | | |
| | | Assert and repeat above D Command until nFAW - 1, if necessary | | | | | | | | | | | | | | | |



IDD Measurement Conditions (Contd.)

IDD7 Measurement-Loop Pattern (Contd.)¹

ATTENTION: Sub-Loops 10-19 have inverse A[6:3] Pattern and Data Pattern than Sub-Loops 0-9

| CK, CK | CKE | Sub-Loop | Cycle Number | Command | CS | RAS | CAS | WE | ODT | BA[2:0] | A[15:11] | A[10] | A[9:7] | A[6:3] | A[2:0] | Data ² |
|--|-------------|--|-------------------|-------------------------------------|----|-----|-----|----|-----|---------|----------|-------|--------|--------|--------|-------------------|
| | | 5 | nFAW | Repeat Sub-Loop 0, but BA[2:0] = 4 | | | | | | | | | | | | |
| | | 6 | nFAW + nRRD | Repeat Sub-Loop 1, but BA[2:0] = 5 | | | | | | | | | | | | |
| | | 7 | nFAW + 2*nRRD | Repeat Sub-Loop 0, but BA[2:0] = 6 | | | | | | | | | | | | |
| | | 8 | nFAW + 3*nRRD | Repeat Sub-Loop 1, but BA[2:0] = 7 | | | | | | | | | | | | |
| toggling | Static High | 9 | nFAW + 4*nRRD | D | 1 | 0 | 0 | 0 | 0 | 7 | 00 | 0 | 0 | F | 0 | - |
| | | Assert and repeat above D Command until 2*nFAW - 1, if necessary | | | | | | | | | | | | | | |
| | | 10 | 2*nFAW | ACT | 0 | 0 | 1 | 1 | 0 | 0 | 00 | 0 | 0 | F | 0 | - |
| | | | 2*nFAW + 1 | RDA | 0 | 1 | 0 | 1 | 0 | 0 | 00 | 1 | 0 | F | 0 | 00110011 |
| | | | 2*nFAW + 2 | D | 1 | 0 | 0 | 0 | 0 | 0 | 00 | 0 | 0 | F | 0 | - |
| | | Repeat above D Command until 2*nFAW + nRRD - 1 | | | | | | | | | | | | | | |
| | | 11 | 2*nFAW + nRRD | ACT | 0 | 0 | 1 | 1 | 0 | 1 | 00 | 0 | 0 | 0 | 0 | - |
| | | | 2*nFAW + nRRD + 1 | RDA | 0 | 1 | 0 | 1 | 0 | 1 | 00 | 1 | 0 | 0 | 0 | 00000000 |
| | | | 2*nFAW + nRRD + 2 | D | 1 | 0 | 0 | 0 | 0 | 1 | 00 | 0 | 0 | 0 | 0 | - |
| | | Repeat above D Command until 2*nFAW + 2*nRRD - 1 | | | | | | | | | | | | | | |
| | | 12 | 2*nFAW + 2*nRRD | Repeat Sub-Loop 10, but BA[2:0] = 2 | | | | | | | | | | | | |
| | | 13 | 2*nFAW + 3*nRRD | Repeat Sub-Loop 11, but BA[2:0] = 3 | | | | | | | | | | | | |
| | | 14 | 2*nFAW + 4*nRRD | D | 1 | 0 | 0 | 0 | 0 | 3 | 00 | 0 | 0 | 0 | 0 | - |
| | | Assert and repeat above D Command until 3*nFAW - 1, if necessary | | | | | | | | | | | | | | |
| | | 15 | 3*nFAW | Repeat Sub-Loop 10, but BA[2:0] = 4 | | | | | | | | | | | | |
| | | 16 | 3*nFAW + nRRD | Repeat Sub-Loop 11, but BA[2:0] = 5 | | | | | | | | | | | | |
| | | 17 | 3*nFAW + 2*nRRD | Repeat Sub-Loop 10, but BA[2:0] = 6 | | | | | | | | | | | | |
| | | 18 | 3*nFAW + 3*nRRD | Repeat Sub-Loop 11, but BA[2:0] = 7 | | | | | | | | | | | | |
| | | 19 | 3*nFAW + 4*nRRD | D | 1 | 0 | 0 | 0 | 0 | 7 | 00 | 0 | 0 | 0 | 0 | - |
| Assert and repeat above D Command until 4*nFAW - 1, if necessary | | | | | | | | | | | | | | | | |

Notes:

- DM must be driven LOW all the time. DQS, \overline{DQS} are used according to RD Commands, otherwise MID-LEVEL
- Burst Sequence driven on each DQ signal by Read Command. Outside burst operation, DQ signals are MID-LEVEL.



IDD Specifications

| Speed Bin | DDR3-800 | | DDR3-1066 | | | DDR3-1333 | | Units | Notes |
|--------------------|----------|-------|-----------|-------|-------|-----------|-------|-------|-------|
| | 5-5-5 | 6-6-6 | 6-6-6 | 7-7-7 | 8-8-8 | 8-8-8 | 9-9-9 | | |
| I _{DD0} | 1730 | 1730 | 1910 | 1910 | 1910 | 2115 | 2115 | mA | |
| I _{DD1} | 1865 | 1865 | 2090 | 2090 | 2090 | 2360 | 2360 | mA | |
| I _{DD2P0} | 866 | 866 | 866 | 866 | 866 | 866 | 866 | mA | |
| I _{DD2P1} | 1190 | 1190 | 1190 | 1190 | 1190 | 1190 | 1190 | mA | |
| I _{DD2Q} | 1460 | 1460 | 1640 | 1640 | 1640 | 1820 | 1820 | mA | |
| I _{DD2N} | 1460 | 1460 | 1640 | 1640 | 1640 | 1820 | 1820 | mA | |
| I _{DD2NT} | 1730 | 1730 | 2000 | 2000 | 2000 | 2180 | 2180 | mA | |
| I _{DD3P} | 1415 | 1415 | 1550 | 1550 | 1550 | 1730 | 1730 | mA | |
| I _{DD3N} | 1550 | 1550 | 1730 | 1730 | 1730 | 2000 | 2000 | mA | |
| I _{DD4R} | 2225 | 2225 | 2630 | 2630 | 2630 | 3125 | 3125 | mA | |
| I _{DD4W} | 2495 | 2495 | 2990 | 2990 | 2990 | 3485 | 3485 | mA | |
| I _{DD5B} | 3125 | 3125 | 3395 | 3395 | 3395 | 3620 | 3620 | mA | |
| I _{DD6} | 216 | 216 | 216 | 216 | 216 | 216 | 216 | mA | |
| I _{DD6ET} | 270 | 270 | 270 | 270 | 270 | 270 | 270 | mA | |
| I _{DD7} | 3710 | 3710 | 3800 | 3800 | 3800 | 4610 | 4610 | mA | |

Pre-release



Refresh Parameters

| Parameter | Symbol | 2Gb | Units |
|--|-------------------|-----------------------------------|-------|
| REF command to ACT or REF command time | t _{RFC} | 160 | ns |
| Average periodic refresh interval | t _{REFI} | 0 °C ≤ T _{CASE} ≤ 85 °C | 7.8 |
| | | 85 °C ≤ T _{CASE} ≤ 95 °C | 3.9 |

Device Standard Speed Bins

DDR3-800 Speed Bins

| Speed Bin | | DDR3-800 | | | | Units | Notes | |
|--|------------------|----------------------|-----------------------|-------|-----------------------|-----------------|-------|------------|
| CL - nRCD - nRP | | 5-5-5 | | 6-6-6 | | | | |
| Parameter | Symbol | Min | Max | Min | Max | | | |
| Internal read command to first data | t _{AA} | 12.5 | 20 | 15 | 20 | ns | | |
| ACT to internal read or write delay time | t _{RCD} | 12.5 | - | 15 | - | ns | | |
| Pre command period | t _{RP} | 12.5 | - | 15 | - | ns | | |
| ACT to ACT or REF command period | t _{RC} | 50 | - | 52.5 | - | ns | | |
| ACT to PRE command period | t _{RAS} | 37.5 | 9 * t _{REFI} | 37.5 | 9 * t _{REFI} | ns | | |
| CL = 5 | CWL = 5 | t _{CK(ave)} | 2.5 | 3.3 | Reserved | | ns | 1, 2, 3, 4 |
| CL = 6 | CWL = 5 | t _{CK(ave)} | 2.5 | 3.3 | 2.5 | 3.3 | ns | 1, 2, 3 |
| Supported CL Settings | | 5, 6 | | 6 | | n _{CK} | | |
| Supported CWL Settings | | 5 | | 5 | | n _{CK} | | |



Device Standard Speed Bins (Contd.)

DDR3-1066 Speed Bins

| Speed Bin | | DDR3-1066 | | | | | | Units | Notes | |
|--|------------------|----------------------|--------------------------|---------|--------------------------|-------|--------------------------|-----------------|-------|---------------|
| CL - nRCD - nRP | | 6-6-6 | | 7-7-7 | | 8-8-8 | | | | |
| Parameter | Symbol | Min | Max | Min | Max | Min | Max | | | |
| Internal read command to first data | t _{AA} | 11.25 | 20 | 13.125 | 20 | 15 | 20 | ns | | |
| ACT to internal read or write delay time | t _{RCD} | 11.25 | - | 13.125 | - | 15 | - | ns | | |
| Pre command period | t _{RP} | 11.25 | - | 13.125 | - | 15 | - | ns | | |
| ACT to ACT or REF command period | t _{RC} | 48.75 | - | 50.625 | - | 52.5 | - | ns | | |
| ACT to PRE command period | t _{RAS} | 37.5 | 9 * t _{REFI} | 37.5 | 9 * t _{REFI} | 37.5 | 9 * t _{REFI} | ns | | |
| CL = 5 | CWL = 5 | t _{CK(avg)} | 2.5 | 3.3 | Reserved | | Reserved | | ns | 1, 2, 3, 4, 5 |
| | CWL = 6 | t _{CK(avg)} | Reserved | | Reserved | | Reserved | | ns | 4 |
| CL = 6 | CWL = 5 | t _{CK(avg)} | 2.5 | 3.3 | 2.5 | 3.3 | 2.5 | 3.3 | ns | 1, 2, 3, 5 |
| | CWL = 6 | t _{CK(avg)} | 1.875 | < 2.5 | Reserved | | Reserved | | ns | 1, 2, 3, 4 |
| CL = 7 | CWL = 5 | t _{CK(avg)} | Reserved | | Reserved | | Reserved | | ns | 4 |
| | CWL = 6 | t _{CK(avg)} | 1.875 | < 2.5 | 1.875 | < 2.5 | Reserved | | ns | 1, 2, 3, 4 |
| CL = 8 | CWL = 5 | t _{CK(avg)} | Reserved | | Reserved | | Reserved | | ns | 1, 2, 3, 4 |
| | CWL = 6 | t _{CK(avg)} | 1.875 | < 2.5 | 1.875 | < 2.5 | 1.875 | < 2.5 | ns | 1, 2, 3 |
| Supported CL Settings | | 5, 6, 7, 8 | | 6, 7, 8 | | 6, 8 | | n _{CK} | | |
| Supported CWL Settings | | 5, 6 | | 5, 6 | | 5, 6 | | n _{CK} | | |

Device Standard Speed Bins (Contd.)
DDR3-1333 Speed Bins

| Speed Bin | | DDR3-1333 | | | | Units | Notes | |
|--|------------------|----------------------|-----------------------|---------|-----------------------|-----------------|-------|---------------|
| CL - nRCD - nRP | | 8-8-8 | | 9-9-9 | | | | |
| Parameter | Symbol | Min | Max | Min | Max | | | |
| Internal read command to first data | t _{AA} | 12 | 20 | 13.5 | 20 | ns | | |
| ACT to internal read or write delay time | t _{RCD} | 12 | - | 13.5 | - | ns | | |
| Pre command period | t _{RP} | 12 | - | 13.5 | - | ns | | |
| ACT to ACT or REF command period | t _{RC} | 48 | - | 49.5 | - | ns | | |
| ACT to PRE command period | t _{RAS} | 36 | 9 * t _{REFI} | 36 | 9 * t _{REFI} | ns | | |
| CL = 5 | CWL = 5 | t _{CK(avg)} | 2.5 | 3.3 | Reserved | | ns | 1, 2, 3, 4, 6 |
| | CWL = 6, 7 | | Reserved | | Reserved | | ns | 4 |
| CL = 6 | CWL = 5 | t _{CK(avg)} | 2.5 | 3.3 | 2.5 | 3.3 | ns | 1, 2, 3, 6 |
| | CWL = 6, 7 | | Reserved | | Reserved | | ns | 4 |
| CL = 7 | CWL = 5 | t _{CK(avg)} | Reserved | | Reserved | | ns | 4 |
| | CWL = 6 | | 1.875 | < 2.5 | Reserved | | ns | 1, 2, 3, 4, 6 |
| | CWL = 7 | | Reserved | | Reserved | | ns | 4 |
| CL = 8 | CWL = 5 | t _{CK(avg)} | Reserved | | Reserved | | ns | 4 |
| | CWL = 6 | | 1.875 | < 2.5 | 1.875 | < 2.5 | ns | 1, 2, 3, 6 |
| | CWL = 7 | | 1.5 | < 1.875 | Reserved | | ns | 1, 2, 3, 4 |
| CL = 9 | CWL = 5, 6 | t _{CK(avg)} | Reserved | | Reserved | | ns | 4 |
| | CWL = 7 | | 1.5 | < 1.875 | 1.5 | < 1.875 | ns | 1, 2, 3 |
| Supported CL Settings | | 5, 6, 7, 8, 9 | | 6, 8, 9 | | n _{CK} | | |
| Supported CWL Settings | | 5, 6, 7 | | 5, 6, 7 | | n _{CK} | | |



Speed Bin Tables Notes

1. The CL setting and CWL setting result in $t_{CK(AVG)min}$ and $t_{CK(AVG)max}$ requirements. When making a selection of $t_{CK(AVG)}$, both need to be fulfilled: Requirements from CL setting as well as requirements from CWL setting.
2. $t_{CK(AVG)min}$ limits: Since \overline{CAS} Latency is not purely analog - data and strobe output are synchronized by the DLL - all possible intermediate frequencies may not be guaranteed. An application should use the next smaller JEDEC standard $t_{CK(AVG)}$ value (2.5, 1.875, or 1.5) when calculating $CL [nCK] = t_{AA} [ns] / t_{CK(AVG)} [ns]$, rounding up to the next 'Supported CL'.
3. $t_{CK(AVG)max}$ limits: Calculate $t_{CK(AVG)} = t_{AAmax} / CL \text{ SELECTED}$ and round the resulting $t_{CK(AVG)}$ down to the next valid speed bin (i.e. 3.3ns, 2.5ns, or 1.875 ns). This result is $t_{CK(AVG)max}$ corresponding to CL SELECTED.
4. 'Reserved' settings are not allowed. User must program a different value.
5. Any DDR3-1066 speed bin also supports functional operation at lower frequencies as shown in the table which are not subject to Production Tests but verified by Design/Characterization.
6. Any DDR3-1333 speed bin also supports functional operation at lower frequencies as shown in the table which are not subject to Production Tests but verified by Design/Characterization.

Preliminary



Device Timing Parameters by Speed Bin

| Parameter | Symbol | DDR3-800 | | DDR3-1066 | | DDR3-1333 | | Units | Notes |
|--|----------------------------|--|--|--|--|--|--|----------------------|-------|
| | | Min | Max | Min | Max | Min | Max | | |
| Clock Timing | | | | | | | | | |
| Minimum clock cycle time (DLL off mode) | t _{CK(DLL_OFF)} | 8 | - | 8 | - | 8 | - | t _{CK} | 6 |
| Average clock period | t _{CK(avg)} | Refer to Speed Bins on pages 31-33. | | | | | | ps | |
| Average high pulse width | t _{CH(avg)} | 0.47 | 0.53 | 0.47 | 0.53 | 0.47 | 0.53 | t _{CK(avg)} | |
| Average low pulse width | t _{CL(avg)} | 0.47 | 0.53 | 0.47 | 0.53 | 0.47 | 0.53 | t _{CK(avg)} | |
| Absolute clock period | t _{CK(abs)} | t _{CK(avg) min} + t _{JIT(per) min} | t _{CK(avg) max} + t _{JIT(per) max} | t _{CK(avg) min} + t _{JIT(per) min} | t _{CK(avg) max} + t _{JIT(per) max} | t _{CK(avg) min} + t _{JIT(per) min} | t _{CK(avg) max} + t _{JIT(per) max} | ps | |
| Absolute clock high pulse width | t _{CH(abs)} | 0.43 | - | 0.43 | - | 0.43 | - | t _{CK(avg)} | 25 |
| Absolute clock low pulse width | t _{CL(abs)} | 0.43 | - | 0.43 | - | 0.43 | - | t _{CK(avg)} | 26 |
| Clock period jitter | t _{JIT(per)} | -100 | 100 | -90 | 90 | -80 | 80 | ps | |
| Clock period jitter during DLL locking period | t _{JIT(per, lck)} | -90 | 90 | -80 | 80 | -70 | 70 | ps | |
| Cycle to cycle period jitter | t _{JIT(CC)} | 200 | | 180 | | 160 | | ps | |
| Cycle to cycle period jitter during DLL locking period | t _{JIT(CC, lck)} | 180 | | 160 | | 140 | | ps | |
| Duty cycle jitter | t _{JIT(duty)} | - | - | - | - | - | - | ps | |
| Cumulative error across 2 cycles | t _{ERR(2per)} | -147 | 147 | -132 | 132 | -118 | 118 | ps | |
| Cumulative error across 3 cycles | t _{ERR(3per)} | -175 | 175 | -157 | 157 | -140 | 140 | ps | |
| Cumulative error across 4 cycles | t _{ERR(4per)} | -194 | 194 | -175 | 175 | -155 | 155 | ps | |
| Cumulative error across 5 cycles | t _{ERR(5per)} | -209 | 209 | -188 | 188 | -168 | 168 | ps | |
| Cumulative error across 6 cycles | t _{ERR(6per)} | -222 | 222 | -200 | 200 | -177 | 177 | ps | |
| Cumulative error across 7 cycles | t _{ERR(7per)} | -232 | 232 | -209 | 209 | -186 | 186 | ps | |
| Cumulative error across 8 cycles | t _{ERR(8per)} | -241 | 241 | -217 | 217 | -193 | 193 | ps | |
| Cumulative error across 9 cycles | t _{ERR(9per)} | -249 | 249 | -224 | 224 | -200 | 200 | ps | |
| Cumulative error across 10 cycles | t _{ERR(10per)} | -257 | 257 | -231 | 231 | -205 | 205 | ps | |
| Cumulative error across 11 cycles | t _{ERR(11per)} | -263 | 263 | -237 | 237 | -210 | 210 | ps | |
| Cumulative error across 12 cycles | t _{ERR(12per)} | -269 | 269 | -242 | 242 | -215 | 215 | ps | |
| Cumulative error across n = 13-50 cycles | t _{ERR(nper)} | $t_{ERR(nper)min} = (1 + 0.68 \ln(n)) * t_{JIT(per)min}$ $t_{ERR(nper)max} = (1 + 0.68 \ln(n)) * t_{JIT(per)max}$ | | | | | | ps | 24 |



Device Timing Parameters by Speed Bin (Contd.)

| Parameter | Symbol | DDR3-800 | | DDR3-1066 | | DDR3-1333 | | Units | Notes |
|--|----------------|----------|---------|-----------|---------|-----------|---------|---------------|-----------|
| | | Min | Max | Min | Max | Min | Max | | |
| Data Timing | | | | | | | | | |
| DQS, \overline{DQS} to DQ skew, per group, per access | t_{DQSQ} | - | 200 | - | 150 | - | 125 | ps | 13 |
| DQ output hold time from DQS, \overline{DQS} | t_{QH} | 0.38 | - | 0.38 | - | 0.38 | - | $t_{CK(ave)}$ | 13, b |
| DQ low-impedance from CK, \overline{CK} | $t_{LZ(DQ)}$ | -800 | 400 | -600 | 300 | -500 | 250 | ps | 13, 14, a |
| DQ high-impedance from CK, \overline{CK} | $t_{HZ(DQ)}$ | - | 400 | - | 300 | - | 250 | ps | 13, 14, a |
| Data setup time to DQS, \overline{DQS} referenced to $V_{IH(AC)} / V_{IL(AC)}$ levels | $t_{DS(base)}$ | 75 | - | 25 | - | TBD | - | ps | 17, d |
| Data hold time from DQS, \overline{DQS} referenced to $V_{IH(DC)} / V_{IL(DC)}$ levels | $t_{DH(base)}$ | 150 | - | 100 | - | TBD | - | ps | 17, d |
| Data Strobe Timing | | | | | | | | | |
| DQS, \overline{DQS} differential READ preamble | t_{RPRE} | 0.9 | Note 19 | 0.9 | Note 19 | 0.9 | Note 19 | $t_{CK(ave)}$ | 13, 19, b |
| DQS, \overline{DQS} differential READ postamble | t_{RPST} | 0.3 | Note 11 | 0.3 | Note 11 | 0.3 | Note 11 | $t_{CK(ave)}$ | 11, 13, b |
| DQS, \overline{DQS} differential output high time | t_{QSH} | 0.38 | - | 0.38 | - | 0.4 | - | $t_{CK(ave)}$ | 13, b |
| DQS, \overline{DQS} differential output low time | t_{QSL} | 0.38 | - | 0.38 | - | 0.4 | - | $t_{CK(ave)}$ | 13, b |
| DQS, \overline{DQS} differential WRITE preamble | t_{WPRE} | 0.9 | - | 0.9 | - | 0.9 | - | $t_{CK(ave)}$ | |
| DQS, \overline{DQS} differential WRITE postamble | t_{WPST} | 0.3 | - | 0.3 | - | 0.3 | - | $t_{CK(ave)}$ | |
| DQS, \overline{DQS} rising edge output access time from rising CK, \overline{CK} | t_{DQSK} | -400 | 400 | -300 | 300 | -255 | 255 | ps | 13, a |
| DQS and \overline{DQS} low-impedance time (Referenced from RL - 1) | $t_{LZ(DQS)}$ | -800 | 400 | -600 | 300 | -500 | 250 | ps | 13, 14, a |
| DQS and \overline{DQS} low-impedance time (Referenced from RL + BL / 2) | $t_{HZ(DQS)}$ | - | 400 | - | 300 | - | 250 | ps | 13, 14, a |
| DQS, \overline{DQS} differential input low pulse width | t_{DQSL} | 0.4 | 0.6 | 0.4 | 0.6 | 0.4 | 0.6 | $t_{CK(ave)}$ | |
| DQS, \overline{DQS} differential input high pulse width | t_{DQSH} | 0.4 | 0.6 | 0.4 | 0.6 | 0.4 | 0.6 | $t_{CK(ave)}$ | |
| DQS, \overline{DQS} rising edge to CK, \overline{CK} rising edge | t_{DQSS} | -0.25 | 0.25 | -0.25 | 0.25 | -0.25 | 0.25 | $t_{CK(ave)}$ | c |
| DQS, \overline{DQS} falling edge setup time to CK, \overline{CK} rising edge | t_{DSS} | 0.2 | - | 0.2 | - | 0.2 | - | $t_{CK(ave)}$ | c |
| DQS, \overline{DQS} falling edge hold time from CK, \overline{CK} rising edge | t_{DSH} | 0.2 | - | 0.2 | - | 0.2 | - | $t_{CK(ave)}$ | c |



Device Timing Parameters by Speed Bin (Contd.)

| Parameter | Symbol | DDR3-800 | | DDR3-1066 | | DDR3-1333 | | Units | Notes |
|---|----------------------------|--|-----|-------------------|-----|-------------------|-----|-------|-----------|
| | | Min | Max | Min | Max | Min | Max | | |
| Command and Address Timing | | | | | | | | | |
| DLL locking time | t _{DLLK} | 512 | - | 512 | - | 512 | - | nCK | |
| Internal READ command to PRECHARGE command delay | t _{RTP} | max (4nCK, 7.5ns) | - | max (4nCK, 7.5ns) | - | max (4nCK, 7.5ns) | - | | e |
| Delay from start of internal write transaction to internal READ command | t _{WTR} | max (4nCK, 7.5ns) | - | max (4nCK, 7.5ns) | - | max (4nCK, 7.5ns) | - | | 18, e |
| WRITE recovery time | t _{WR} | 15 | - | 15 | - | 15 | - | ns | e |
| Mode Register Set command cycle time | t _{MRD} | 4 | - | 4 | - | 4 | - | nCK | |
| Mode Register Set command update delay | t _{MOD} | max (12nCK, 15ns) | - | max (12nCK, 15ns) | - | max (12nCK, 15ns) | - | | |
| ACT to internal read or write delay time | t _{RCD} | Refer to Speed Bins on pages 31-33. | | | | | | | e |
| PRECHARGE command period | t _{RP} | Refer to Speed Bins on pages 31-33. | | | | | | | e |
| ACT to ACT or REF command period | t _{RC} | Refer to Speed Bins on pages 31-33. | | | | | | | e |
| CAS to $\overline{\text{CAS}}$ command delay | t _{CCD} | 4 | - | 4 | - | 4 | - | nCK | |
| Auto-precharge write recovery + precharge time | t _{DAL(min)} | WR + roundup (t _{RP} / t _{CK(avg)}) | | | | | | nCK | |
| Multi-purpose register recovery time | t _{MRR} | 1 | - | 1 | - | 1 | - | nCK | 22 |
| ACTIVE to PRECHARGE command period | t _{RAS} | Refer to Speed Bins on pages 31-33. | | | | | | | e |
| ACTIVE to ACTIVE command period for 1KB page size | t _{RRD} | max (4nCK, 10ns) | - | max (4nCK, 7.5ns) | - | max (4nCK, 6ns) | - | | e |
| Four activate window for 1KB page size | t _{FAW} | 40 | - | 37.5 | - | 30 | - | ns | e |
| Command and Address setup time to CK, CK referenced to V _{IH(AC)} / V _{IL(AC)} levels | t _{S(base)} | 200 | - | 125 | - | 65 | - | ps | 16, b |
| Command and Address hold time to CK, CK referenced to V _{IH(DC)} / V _{IL(DC)} levels | t _{H(base)} | 275 | - | 200 | - | 140 | - | ps | 16, b |
| Command and Address setup time to CK, CK referenced to V _{IH(AC)} / V _{IL(AC)} levels | t _{S(base) AC150} | - | - | - | - | 65 + 125 | - | ps | 16, 27, b |
| Calibration Timing | | | | | | | | | |
| Power-up and RESET calibration time | t _{ZQinit} | 512 | - | 512 | - | 512 | - | nCK | |
| Normal operation Full calibration time | t _{ZQoper} | 256 | - | 256 | - | 256 | - | nCK | |
| Normal operation Short calibration time | t _{ZQCS} | 64 | - | 64 | - | 64 | - | nCK | 23 |



Device Timing Parameters by Speed Bin (Contd.)

| Parameter | Symbol | DDR3-800 | | DDR3-1066 | | DDR3-1333 | | Units | Notes |
|--|---------------|------------------------------------|----------------|------------------------------------|----------------|------------------------------------|----------------|-------|-------|
| | | Min | Max | Min | Max | Min | Max | | |
| Reset Timing | | | | | | | | | |
| Exit Reset from CKE HIGH to a valid command | t_{XPR} | max (5nCK, t_{RFC} (min) + 10ns) | - | max (5nCK, t_{RFC} (min) + 10ns) | - | max (5nCK, t_{RFC} (min) + 10ns) | - | | |
| Self Refresh Timing | | | | | | | | | |
| Exit Self Refresh from to commands not requiring a locked DLL | t_{XS} | max (5nCK, t_{RFC} (min) + 10ns) | - | max (5nCK, t_{RFC} (min) + 10ns) | - | max (5nCK, t_{RFC} (min) + 10ns) | - | | |
| Exit Self Refresh from to commands requiring a locked DLL | t_{XSDLL} | t_{DLLK} (min) | - | t_{DLLK} (min) | - | t_{DLLK} (min) | - | nCK | |
| Minimum CKE low width for Self Refresh entry to exit timing | t_{CKESR} | t_{CKE} (min) + 1nCK | - | t_{CKE} (min) + 1nCK | - | t_{CKE} (min) + 1nCK | - | | |
| Valid clock requirement after Self Refresh Entry (SRE) or Power-Down Entry (PDE) | t_{CKSRE} | max (5nCK, 10ns) | - | max (5nCK, 10ns) | - | max (5nCK, 10ns) | - | | |
| Valid clock requirement before Self Refresh Exit (SRX) or Power-Down Exit (PDX) or Reset Exit | t_{CKSRX} | max (5nCK, 10ns) | - | max (5nCK, 10ns) | - | max (5nCK, 10ns) | - | | |
| Power Down Timing | | | | | | | | | |
| Exit Power Down with DLL on to any valid command; Exit Precharge Power Down with DLL frozen to commands not requiring a locked DLL | t_{XP} | max (3nCK, 7.5ns) | - | max (3nCK, 7.5ns) | - | max (3nCK, 7.5ns) | - | | |
| Exit Precharge Power Down with DLL frozen to commands requiring a locked DLL | t_{XPDLL} | max (10nCK, 24ns) | - | max (10nCK, 24ns) | - | max (10nCK, 24ns) | - | | 2 |
| Command pass disable delay | t_{CPDED} | 1 | - | 1 | - | 1 | - | nCK | |
| Power Down Entry to Exit Timing | t_{PD} | t_{CKE} (min) | 9 * t_{REFI} | t_{CKE} (min) | 9 * t_{REFI} | t_{CKE} (min) | 9 * t_{REFI} | | 15 |
| Timing of ACT command to Power Down entry | $t_{ACTPDEN}$ | 1 | - | 1 | - | 1 | - | nCK | 20 |
| Timing of PRE or PREA command to Power Down entry | t_{PRPDEN} | 1 | - | 1 | - | 1 | - | nCK | 20 |
| Timing of RD/RDA command to Power Down entry | t_{RDPDEN} | RL + 4 + 1 | - | RL + 4 + 1 | - | RL + 4 + 1 | - | nCK | |
| CKE minimum pulse width | t_{CKE} | max (3nCK, 7.5ns) | - | max (3nCK, 5.625ns) | - | max (3nCK, 5.625ns) | - | nCK | |



Device Timing Parameters by Speed Bin (Contd.)

| Parameter | Symbol | DDR3-800 | | DDR3-1066 | | DDR3-1333 | | Units | Notes |
|---|----------------------|--|-----|--|-----|--|-----|----------------------|--------|
| | | Min | Max | Min | Max | Min | Max | | |
| Timing of WR command to Power Down entry (BL8OTF, BL8MRS, BC4OTF) | t _{WRPDEN} | WL + 4 + (t _{WR} / t _{CK(avg)}) | - | WL + 4 + (t _{WR} / t _{CK(avg)}) | - | WL + 4 + (t _{WR} / t _{CK(avg)}) | - | nCK | 9 |
| Timing of WRA command to Power Down entry (BL8OTF, BL8MRS, BC4OTF) | t _{WRAPDEN} | WL + 4 + WR + 1 | - | WL + 4 + WR + 1 | - | WL + 4 + WR + 1 | - | nCK | 10 |
| Timing of WR command to Power Down entry (BC4MRS) | t _{WRPDEN} | WL + 2 + (t _{WR} / t _{CK(avg)}) | - | WL + 2 + (t _{WR} / t _{CK(avg)}) | - | WL + 2 + (t _{WR} / t _{CK(avg)}) | - | nCK | 9 |
| Timing of WRA command to Power Down entry (BC4MRS) | t _{WRAPDEN} | WL + 2 + WR + 1 | - | WL + 2 + WR + 1 | - | WL + 2 + WR + 1 | - | nCK | 10 |
| Timing of REF command to Power Down entry | t _{REFPDEN} | 1 | - | 1 | - | 1 | - | nCK | 20, 21 |
| Timing of MRS command to Power Down entry | t _{MRSPDEN} | t _{MOD} (min) | - | t _{MOD} (min) | - | t _{MOD} (min) | - | | |
| ODT Timing | | | | | | | | | |
| ODT high time without Write command or with Write command and BC4 | ODTH4 | 4 | - | 4 | - | 4 | - | nCK | |
| ODT high time with Write command and BL8 | ODTH8 | 6 | - | 6 | - | 6 | - | nCK | |
| Asynchronous RTT turn-on delay (Power-Down with DLL frozen) | t _{AONPD} | 1 | 9 | 1 | 9 | 1 | 9 | ns | |
| Asynchronous RTT turn-off delay (Power-Down with DLL frozen) | t _{AOFFPD} | 1 | 9 | 1 | 9 | 1 | 9 | ns | |
| RTT turn-on | t _{AON} | -400 | 400 | -300 | 300 | -250 | 250 | ps | 7, a |
| RTT_Nom and RTT_WR turn-off time from ODTLoff reference | t _{AOFF} | 0.3 | 0.7 | 0.3 | 0.7 | 0.3 | 0.7 | t _{CK(avg)} | 8, a |
| RTT dynamic change skew | t _{ADC} | 0.3 | 0.7 | 0.3 | 0.7 | 0.3 | 0.7 | t _{CK(avg)} | a |
| Write Leveling Timing | | | | | | | | | |
| First DQS/DQS rising edge after write leveling mode is programmed | t _{WLMRD} | 40 | - | 40 | - | 40 | - | nCK | 3 |
| DQS/DQS delay after write leveling mode is programmed | t _{WLDQSEN} | 25 | - | 25 | - | 25 | - | nCK | 3 |
| Write leveling setup time from rising CK, CK crossing to rising DQS, DQS crossing | t _{WLS} | 325 | - | 245 | - | 195 | - | ps | |
| Write leveling hold time from rising DQS, DQS crossing to rising CK, CK crossing | t _{WLH} | 325 | - | 245 | - | 195 | - | ps | |
| Write leveling output delay | t _{WLO} | 0 | 9 | 0 | 9 | 0 | 9 | ns | |
| Write leveling output error | t _{WLOE} | 0 | 2 | 0 | 2 | 0 | 2 | ns | |



Device Timing Parameters Notes

1. Actual value dependant upon measurement level definitions which are TBD.
2. Commands requiring a locked DLL are: READ (and RAP) and synchronous ODT commands.
3. The max values are system dependent.
4. WR as programmed in the Mode Register.
5. Value must be rounded-up to next higher integer value.
6. There is no maximum cycle time limit besides the need to satisfy the refresh interval, t_{REFI} .
7. Minimum RTT turn-on time (t_{AONmin}) is the point in time when the device leaves high impedance and ODT resistance begins to turn on. Maximum RTT turn on time (t_{AONmax}) is the point in time when the ODT resistance is fully on. Both are measured from ODTL_{on}.
8. Minimum RTT turn-off time (t_{AOFmin}) is the point in time when the device starts to turn off the ODT resistance. Maximum RTT turn off time (t_{AOFmax}) is the point in time when the on-die termination has reached high impedance. Both are measured from ODTL_{off}.
9. t_{WR} is defined in ns, for calculation of t_{WRPDEN} it is necessary to round up t_{WR} / t_{CK} to the next integer.
10. WR is in clock cycles as programmed in MR0.
11. The maximum postamble is bound by $t_{HZDQS(max)}$.
12. Output timing deratings are relative to the SDRAM input clock. When the device is operated with input clock jitter, this parameter needs to be derated by TBD.
13. Value is only valid for RON34.
14. Single ended signal parameter.
15. t_{REFI} depends on T_{OPER} .
16. $t_{IS(base)}$ and $t_{IH(base)}$ values are for 1V/ns CMD/ADD single-ended slew rate and 2V/ns CK, \overline{CK} differential slew rate. Note for DQ and DM signals, $V_{REF(DC)} = V_{REFDQ(DC)}$. For input only pins except \overline{RESET} , $V_{REF(DC)} = V_{REFCA(DC)}$.
17. $t_{DS(base)}$ and $t_{DH(base)}$ values are for 1V/ns DQ single-ended slew rate and 2V/ns DQS, \overline{DQS} differential slew rate. Note for DQ and DM signals, $V_{REF(DC)} = V_{REFDQ(DC)}$. For input only pins except \overline{RESET} , $V_{REF(DC)} = V_{REFCA(DC)}$.
18. Start of internal write transaction is defined as follows:
 For BL8 (fixed by MRS and on- the-fly): Rising clock edge 4 clock cycles after WL.
 For BC4 (on- the- fly): Rising clock edge 4 clock cycles after WL.
 For BC4 (fixed by MRS): Rising clock edge 2 clock cycles after WL.
19. The maximum preamble is bound by $t_{LZDQS(min)}$.
20. CKE is allowed to be registered low while operations such as row activation, precharge, autoprecharge or refresh are in progress, but power-down IDD spec will not be applied until finishing those operations.
21. Although CKE is allowed to be registered LOW after a REFRESH command once $t_{REFPDEN(min)}$ is satisfied, there are cases where additional time such as $t_{XPDLL(min)}$ is also required.
22. Defined between end of MPR read burst and MRS which reloads MPR or disables MPR function.
23. One ZQCS command can effectively correct a minimum of 0.5% (ZQCorrection) of RON and RTT impedance error within 64 nCK for all speed bins assuming the maximum sensitivities specified in the 'Output Driver Voltage and Temperature Sensitivity' and 'ODT Voltage and Temperature Sensitivity' tables. The appropriate interval between ZQCS commands can be determined from these tables and other application-specific parameters.
 One method for calculating the interval between ZQCS commands, given the temperature ($T_{driftrate}$) and voltage ($V_{driftrate}$) drift rates that the SDRAM is subject to in the application, is illustrated. The interval could be defined by the following formula:

$$\frac{ZQCorrection}{(TSens \times Tdriftrate) + (VSens \times Vdriftrate)}$$

where $TSens = \max(dRRTdT, dRONdTM)$ and $VSens = \max(dRTTdV, dRONdVM)$ define the SDRAM temperature and voltage sensitivities.

For example, if $TSens = 1.5\% / ^\circ C$, $VSens = 0.15\% / mV$, $Tdriftrate = 1 ^\circ C / sec$ and $Vdriftrate = 15 mV / sec$, then the interval between ZQCS commands is calculated as:

$$\frac{0.5}{(1.5 \times 1) + (0.15 + 15)} = 0.133 \approx 128ms$$

24. n = from 13 cycles to 50 cycles. This row defines 38 parameters.
25. $t_{CH(abs)}$ is the absolute instantaneous clock high pulse width, as measured from one rising edge to the following falling edge.
26. $t_{CL(abs)}$ is the absolute instantaneous clock low pulse width, as measured from one falling edge to the following rising edge.
27. The $t_{IS(base)}$ AC150 specifications are adjusted from the $t_{IS(base)}$ specification by adding an additional 100 ps of derating to accommodate for the lower alternate threshold of 150 mV and another 25 ps to account for the earlier reference point [(175 mv - 150 mV) / 1 V/ns].



Jitter Notes

- a When the device is operated with input clock jitter, this parameter needs to be derated by the actual $t_{ERR(mper)act}$ of the input clock, where $2 \leq m \leq 12$. (Output deratings are relative to the SDRAM input clock.)

For example, if the measured jitter into a DDR3-800 SDRAM has $t_{ERR(mper)act,min} = -172$ ps and $t_{ERR(mper)act,max} = +193$ ps, then $t_{DQSCkmin(derated)} = t_{DQSCkmin} - t_{ERR(mper)act,max} = -400$ ps - 193 ps = -593 ps and $t_{DQSCkmax(derated)} = t_{DQSCk,max} - t_{ERR(mper)act,min} = 400$ ps + 172 ps = +572 ps. Similarly, $t_{LZ(DQ)}$ for DDR3-800 derates to $t_{LZ(DQ)min(derated)} = -800$ ps - 193 ps = -993 ps and $t_{LZ(DQ)max(derated)} = 400$ ps + 172 ps = +572 ps. (Caution on the min/max usage!)

Note that $t_{ERR(mper)act,min}$ is the minimum measured value of $t_{ERR(nper)}$ where $2 \leq n \leq 12$, and $t_{ERR(mper)act,max}$ is the maximum measured value of $t_{ERR(nper)}$ where $2 \leq n \leq 12$.

- b When the device is operated with input clock jitter, this parameter needs to be derated by the actual $t_{JIT(per)act}$ of the input clock. (Output deratings are relative to the SDRAM input clock.)

For example, if the measured jitter into a DDR3-800 SDRAM has $t_{CK(avg)act} = 2500$ ps, $t_{JIT(per)act,min} = -72$ ps and $t_{JIT(per)act,max} = +93$ ps, then $t_{RPREmin(derated)} = t_{RPREmin} + t_{JIT(per)act,min} = 0.9 \times t_{CK(avg)act} + t_{JIT(per)act,min} = 0.9 \times 2500$ ps - 72 ps = +2178 ps.

Similarly, $t_{QHmin(derated)} = t_{QHmin} + t_{JIT(per)act,min} = 0.38 \times t_{CK(avg)act} + t_{JIT(per)act,min} = 0.38 \times 2500$ ps - 72 ps = +878 ps. (Caution on the min/max usage!)

- c These parameters are measured from a data strobe signal (DQS, \overline{DQS}) crossing to its respective clock signal (CK, \overline{CK}) crossing. The spec values are not affected by the amount of clock jitter applied (i.e. $t_{JIT(per)}$, $t_{JIT(cc)}$, etc.), as these are relative to the clock signal crossing. That is, these parameters should be met whether clock jitter is present or not.
- d These parameters are measured from a data signal ($DM, DQ0, DQ1, \text{etc.}$) transition edge to its respective data strobe signal (DQS, \overline{DQS}) crossing.
- e For these parameters, the DDR3 SDRAM device supports $t_{nPARAM} [nCK] = RU\{t_{PARAM} [ns] / t_{CK(avg)} [ns]\}$, which is in clock cycles, assuming all input clock jitter specifications are satisfied. For example, the device will support $t_{nRP} = RU\{t_{RP} / t_{CK(avg)}\}$, which is in clock cycles, if all input clock jitter specifications are met. This means: For DDR3-800 6-6-6, of which $t_{RP} = 15$ ns, the device will support $t_{nRP} = RU\{t_{RP} / t_{CK(avg)}\} = 6$, as long as the input clock jitter specifications are met, i.e. Precharge command at Tm and Active command at $Tm+6$ is valid even if $(Tm+6 - Tm)$ is less than 15 ns due to input clock jitter.

Pre-release



Part Number Decode

S G 5 72 12 8 C H 8 Y Z U U 1
 1 2 3 4 5 6 7 8 9 10 11 12 13

- | | |
|---|--|
| <p>1 SMART Modular Technologies</p> <p>2 Module Process Technology G: Green Module (RoHS Compliant)</p> <p>3 Product Category 5: SDRAM DIMM with Standard Testing</p> <p>4 Module Data Bus Width 72: x72</p> <p>5 Module Address Depth 12: 512M</p> <p>6 Device Data Width 8: x8</p> <p>7 Special Device Feature C: RC Stakpak Stack (8 Bank SDRAM)</p> <p>8 Technology H: DDR3 SDRAM</p> <p>9 Refresh/Power 8: 8K Refresh/Standard Power</p> <p>10 Module Configuration Y: 244-pin Mini-DIMM Registered, Parity</p> <p>11 Device Physicals Z: 2Gbit Device Based</p> <p>12 CAS Latencies Supported 6: 6 K: 5, 6 R: 5, 6, 7, 8 L: 6, 7, 8 M: 6, 8 N: 5, 6, 7, 8, 9 P: 6, 8, 9</p> | <p>13 Cycle Time (Clock Speed) A: 2.5ns (400MHz, PC3-6400, DDR3-800-555) B: 2.5ns (400MHz, PC3-6400, DDR3-800-666) C: 1.875ns (533MHz, PC3-8500, DDR3-1066-777) D: 1.875ns (533MHz, PC3-8500, DDR3-1066-888) E: 1.875ns (533MHz, PC3-8500, DDR3-1066-666) G: 1.5ns (667MHz, PC3-10600, DDR3-1333-888) H: 1.5ns (667MHz, PC3-10600, DDR3-1333-999)</p> |
|---|--|

Note: "UU" in the part number should be replaced by user specified option.



Disclaimer:

No part of this document may be copied or reproduced in any form or by any means, or transferred to any third party, without the prior written consent of an authorized representative of SMART Modular Technologies, Inc. ("SMART"). The information in this document is subject to change without notice. SMART assumes no responsibility for any errors or omissions that may appear in this document, and disclaims responsibility for any consequences resulting from the use of the information set forth herein. SMART makes no commitments to update or to keep current information contained in this document. The products listed in this document are not suitable for use in applications such as, but not limited to, aircraft control systems, aerospace equipment, submarine cables, nuclear reactor control systems and life support systems. Moreover, SMART does not recommend or approve the use of any of its products in life support devices or systems or in any application where failure could result in injury or death. If a customer wishes to use SMART products in applications not intended by SMART, said customer must contact an authorized SMART representative to determine SMART's willingness to support a given application. The information set forth in this document does not convey any license under the copyrights, patent rights, trademarks or other intellectual property rights claimed and owned by SMART. The information set forth in this document is considered to be "Proprietary" and "Confidential" property owned by SMART.

ALL PRODUCTS SOLD BY SMART ARE COVERED BY THE PROVISIONS APPEARING IN SMART'S TERMS AND CONDITIONS OF SALE ONLY, INCLUDING THE LIMITATIONS OF LIABILITY, WARRANTY AND INFRINGEMENT PROVISIONS. SMART MAKES NO WARRANTIES OF ANY KIND, EXPRESS, STATUTORY, IMPLIED OR OTHERWISE, REGARDING INFORMATION SET FORTH HEREIN OR REGARDING THE FREEDOM OF THE DESCRIBED PRODUCTS FROM INTELLECTUAL PROPERTY INFRINGEMENT, AND EXPRESSLY DISCLAIMS ANY SUCH WARRANTIES INCLUDING WITHOUT LIMITATION ANY EXPRESS, STATUTORY OR IMPLIED WARRANTIES OF MERCHANTABILITY OR FITNESS FOR A PARTICULAR PURPOSE.

©1996 SMART Modular Technologies, Inc. All rights reserved.