

Features:

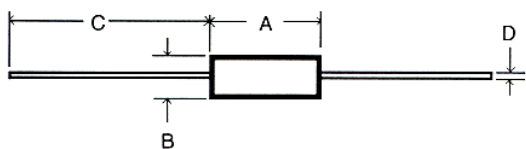
- Metal element resistors
- Excellent load life stability
- Tinned copper leads
- Low temperature coefficient
- RoHS compliant
- Molded bodies
- TMR – Kelvin Bridge Test
- MRS high stability version
- Cut and formed product is available on selected sizes - contact factory for details
- Values of 0.150 ohms and below are non-magnetic and non-inductive



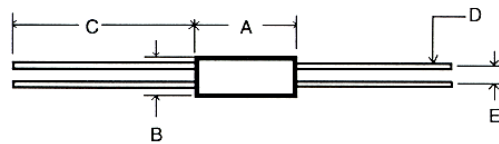
Electrical Specifications

Type / Code	Power Rating (Watts) @ 70°C	Short Time Overload	Dielectric Strength	Resistance Temperature Coefficient	Ohmic Range (Ω) and Tolerance
					1%, 5%
MR1	1W	5 sec. at 5x rated power	500 VAC	±50 to ±400 ppm/°C (1)	0.01 - 0.1
MR3	3W	5 sec. at 5x rated power	500 VAC	±50 to ±400 ppm/°C (1)	0.005 - 0.2
MR5	5W	5 sec. at 5x rated power	500 VAC	±50 to ±400 ppm/°C (1)	0.005 - 0.3
MR10	10W	5 sec. at 5x rated power	500 VAC	±50 to ±400 ppm/°C (1)	0.01 - 0.5
TMR3	3W	5 sec. at 5x rated power	500 VAC	±40 ppm/°C	0.005 - 0.2
TMR5	5W	5 sec. at 5x rated power	500 VAC	±40 ppm/°C	0.005 - 0.3

(1) TCR is value dependent. Contact factory for specific data.



MR



TMR

Mechanical Specifications

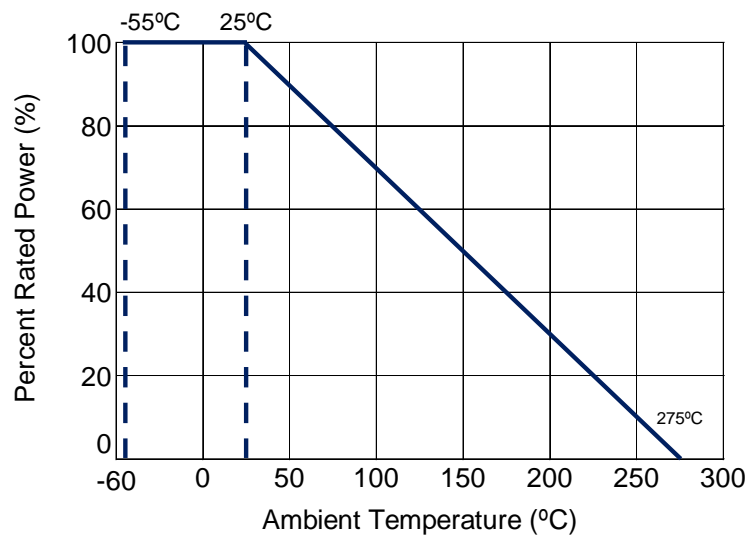
Type / Code	A Body Length	B Body Diameter	C Lead Length (Bulk)(1)	D Lead Diameter	E Lead Spacing (Ref.)	Unit
MR1	0.385 ± 0.015	0.135 ± 0.015	1.375 ± 0.125	0.032 ± 0.002	-	inches
	9.78 ± 0.38	3.43 ± 0.38	34.93 ± 3.18	0.81 ± 0.05	-	mm
MR3	0.560 ± 0.015	0.205 ± 0.015	1.375 ± 0.125	0.032 ± 0.002	-	inches
	14.22 ± 0.38	5.21 ± 0.38	34.93 ± 3.18	0.81 ± 0.05	-	mm
MR5	0.925 ± 0.015	0.330 ± 0.015	1.375 ± 0.125	0.036 ± 0.002	-	inches
	23.50 ± 0.38	8.38 ± 0.38	34.93 ± 3.18	0.91 ± 0.05	-	mm
MR10	1.925 ± 0.015	0.475 ± 0.015	1.375 ± 0.125	0.036 ± 0.002	-	inches
	48.90 ± 0.38	12.07 ± 0.38	34.93 ± 3.18	0.91 ± 0.05	-	mm
TMR3	0.625 ± 0.015	0.205 ± 0.015	1.375 ± 0.125	0.032 ± 0.002	0.125	inches
	15.88 ± 0.38	5.21 ± 0.38	34.93 ± 3.18	0.81 ± 0.05	3.18	mm
TMR5	0.940 ± 0.015	0.330 ± 0.015	1.375 ± 0.125	0.036 ± 0.002	0.200	inches
	23.88 ± 0.38	8.38 ± 0.38	34.93 ± 3.18	0.91 ± 0.05	5.08	mm

(1) See "Resistor Packaging Specification Document" for lead length dimension for tape and reel packaged product

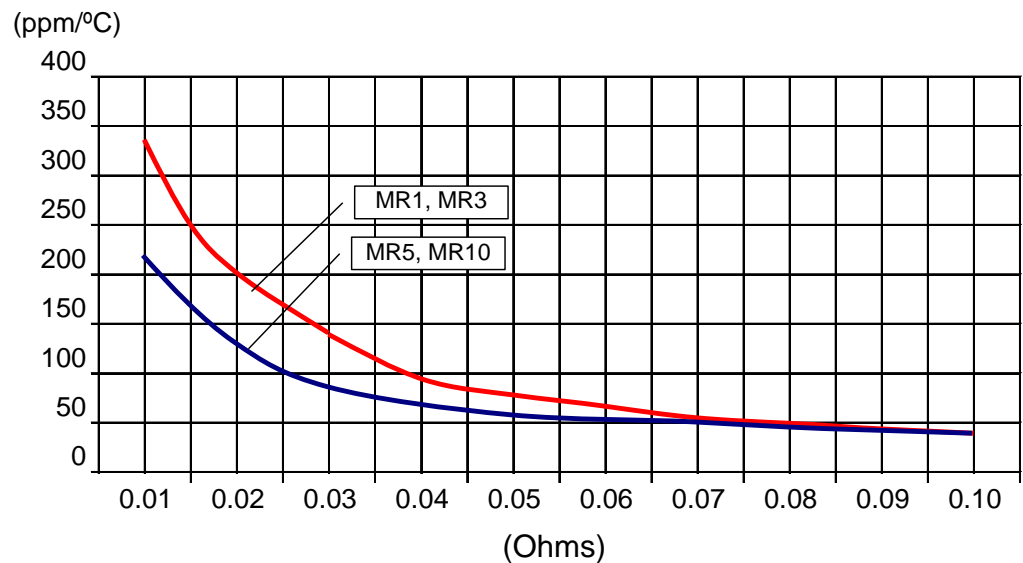
Performance Characteristics	
Test	Test Results
Moisture Resistance	±5%
Thermal Shock	±2%
Load Life @ 70°C - 1,000 hrs.	±5%
Resistance to Soldering Heat	±2%
Short Time Overload	±2%
Dielectric Withstanding Voltage	±2%

Operating Temperature Range: -55°C to +275°C

Power Derating Curve:



TCR x Resistance:



How to Order

