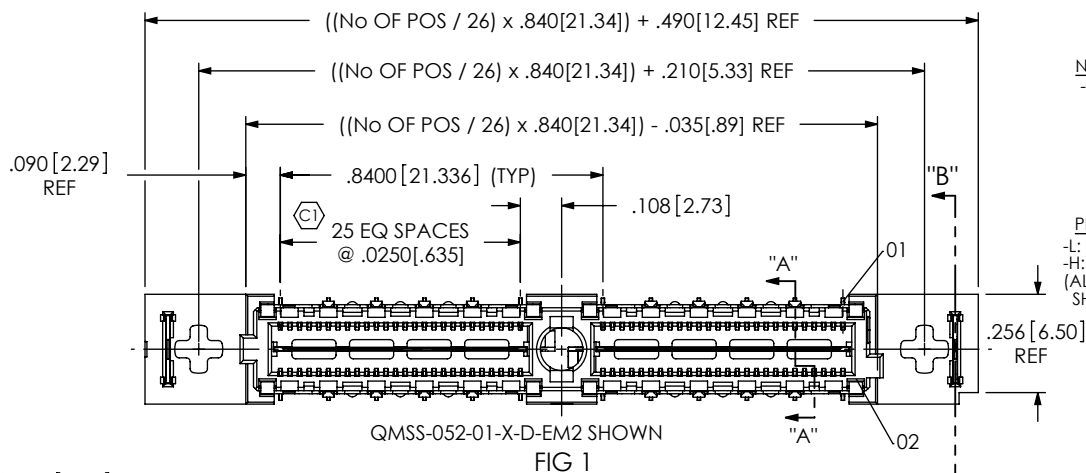


DO NOT
SCALE FROM
THIS PRINT



QMSS-XXX-XX-X-D-EM2-XXX-XX

No OF POSITIONS
-026, -052, -078,
-104, * -130
(PER ROW)

LEAD STYLE
-01

PLATING SPECIFICATION
-L: LIGHT GOLD (USE T-1M25-01-L)
-H: HEAVY GOLD (USE T-1M25-01-H)
(ALL PLATING STYLES USE
SH1-E2-L, T-1G22-01-G & WT-17-01-GF)

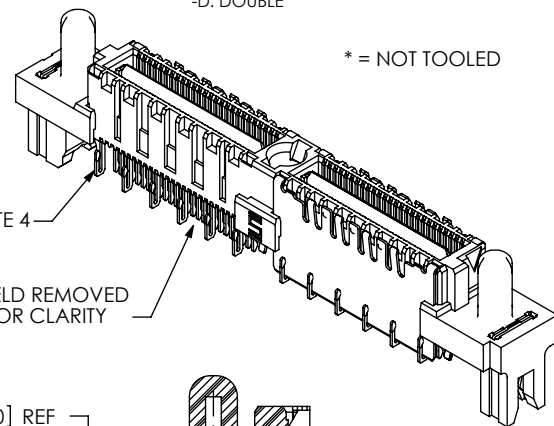
OPTIONS
-TR: TAPE & REEL PACKAGING
(-026 & -052 WITH NO OPTIONS)
(-026 & -052 WITH -PC4)
(-026 WITH -PC8)

POWER COMBO OPTION
(USE T-1S13-13-S-2)
-PC4: 4 POWER POS PER END
-PC8: 8 POWER POS PER END
(SEE FIG 2, SHEET 3)
[-PCX AVAILABLE ON POSITIONS
-026, -052 & -078 ONLY]

-EM2: EDGE MOUNT

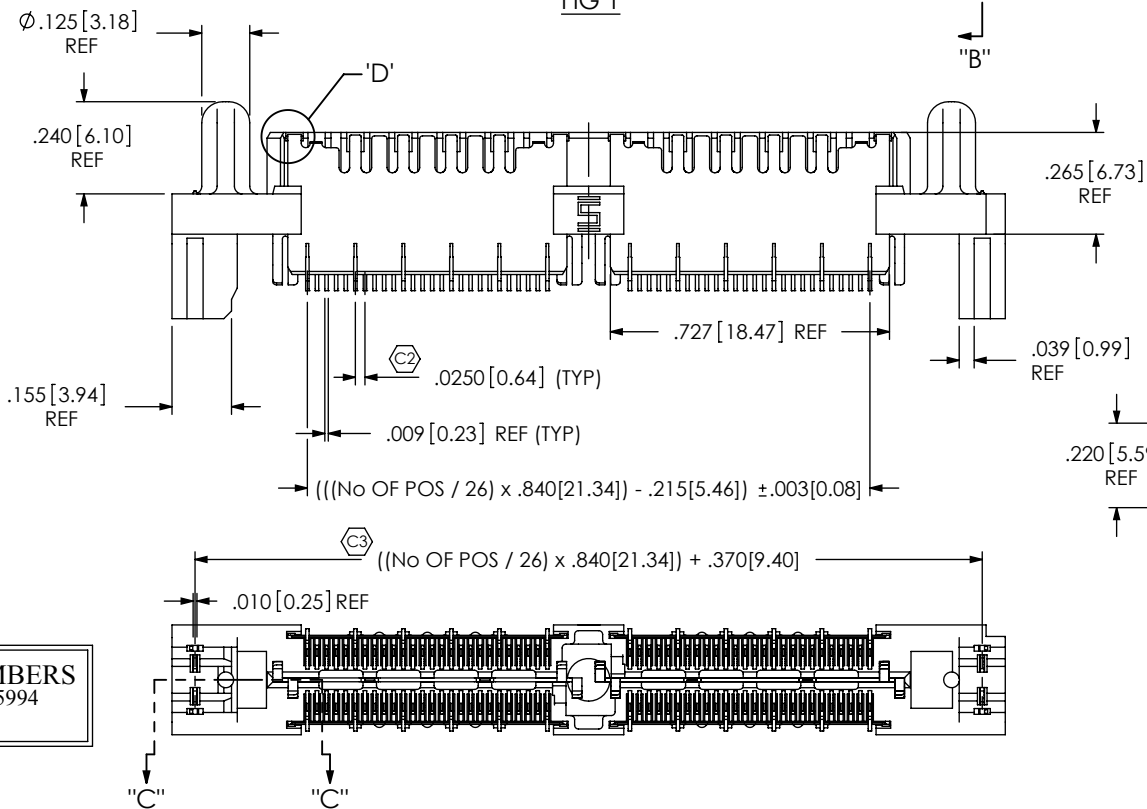
ROW SPECIFICATION
-D: DOUBLE

* = NOT TOOLED



SEE NOTE 4

SHIELD REMOVED
FOR CLARITY

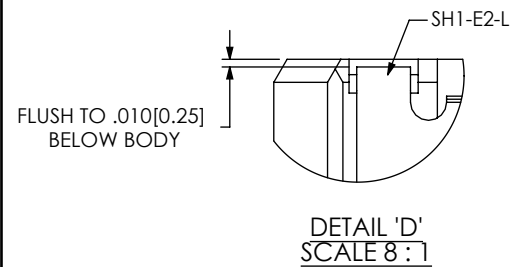


SECTION "C"-"C"

PATENT NUMBERS
6739884 / 7165994
7121849

NOTES:

1. \odot REPRESENTS A CRITICAL DIMENSION.
2. MAXIMUM BURR ALLOWANCE: .0015 [0.038]
3. MINIMUM PUSHOUT FORCE: SIGNAL: .5 LB, SHIELD/GROUND & WELD TAB: 1 LB.
4. TERMINALS IN THE FIRST POSITION OF EACH BANK AND EVERY FIFTH POSITION AFTER THAT WILL NOT BE SHEARED.
5. MAXIMUM VARIANCE: .002[0.05].
6. NOTE DELETED.
7. PARTS TO BE PACKAGED IN TRAYS AS STANDARD.



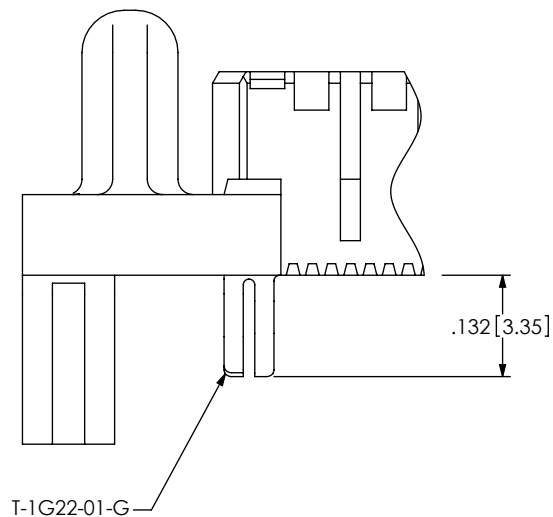
UNLESS OTHERWISE SPECIFIED,
DIMENSIONS ARE IN INCHES.
TOLERANCES ARE:
DECIMALS ANGLES
.XX: $\pm .01$ [.3] 2°
.XXX: $\pm .005$ [.13]
.XXXX: $\pm .0020$ [.051]

PROPRIETARY NOTE
THIS DOCUMENT CONTAINS INFORMATION
CONFIDENTIAL AND PROPRIETARY TO
SAMTEC, INC. AND SHALL NOT BE REPRODUCED
OR TRANSFERRED TO OTHER DOCUMENTS OR
DISCLOSED TO OTHERS OR USED FOR ANY
PURPOSE OTHER THAN THAT WHICH IT WAS
OBTAINED WITHOUT THE EXPRESSED WRITTEN
CONSENT OF SAMTEC, INC.

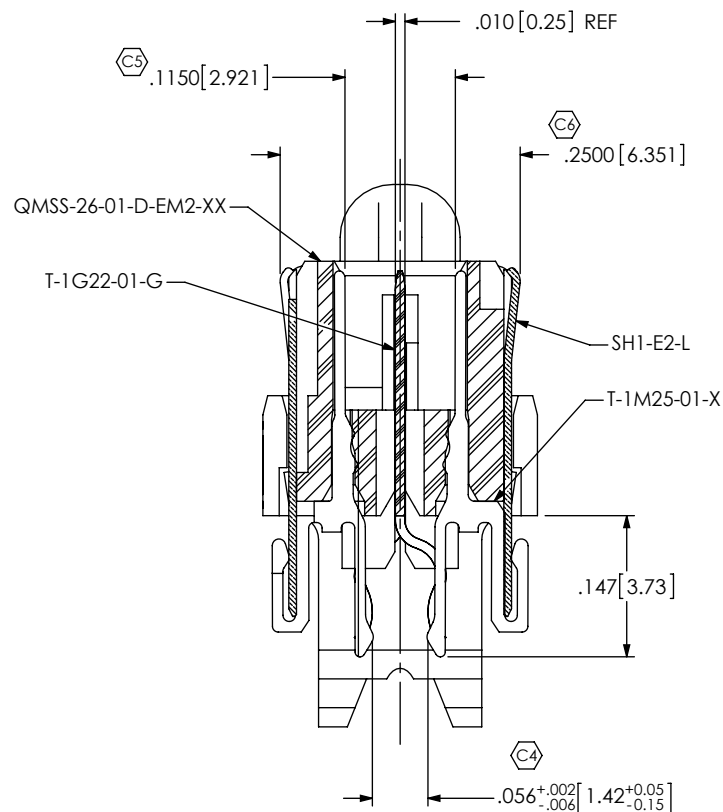
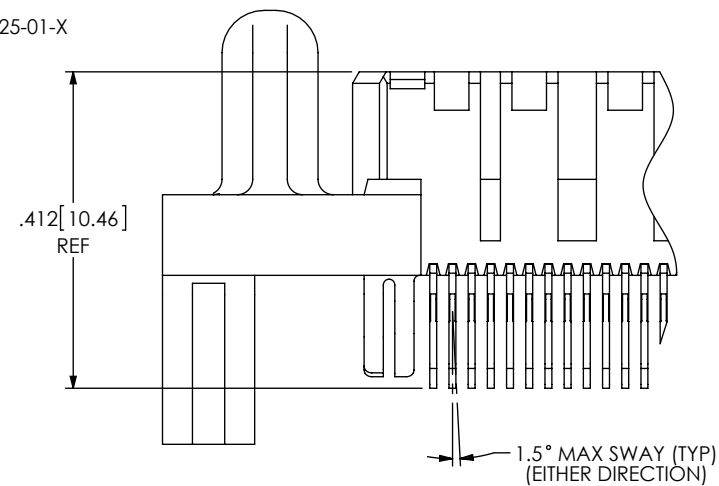
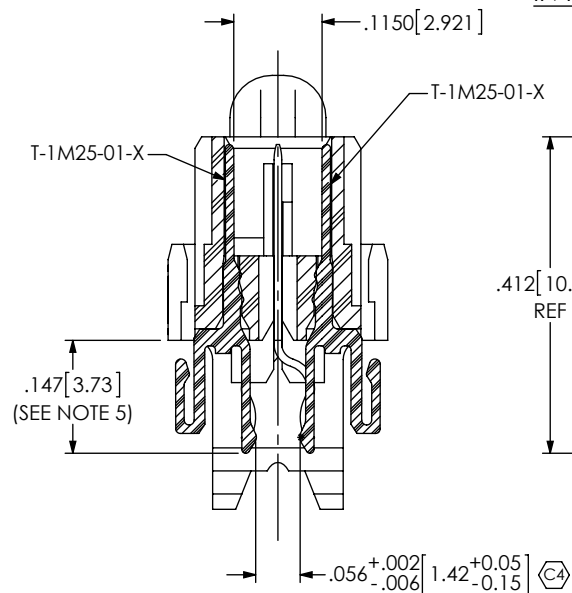
<p>520 PARK EAST BLVD, NEW ALBANY, IN 47150 PHONE: 812-944-6733 FAX: 812-948-5047 e-Mail: info@SAMTEC.com code: 55322</p>	
<p>DESCRIPTION: .635mm DOUBLE ROW SHIELDED EDGE MOUNT TERMINAL STRIP</p>	
<p>DWG. NO. QMSS-XXX-XX-X-D-EM2-XXX-XX</p>	
<p>BY: BRATCHER 11/22/2002</p>	<p>SHEET 1 OF 3</p>

REVISION M

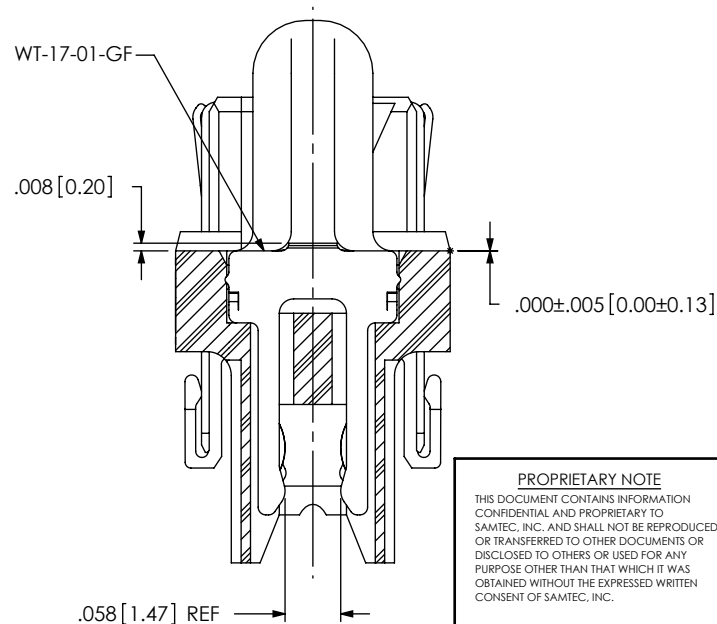
IN-PROCESS 1



IN-PROCESS 2

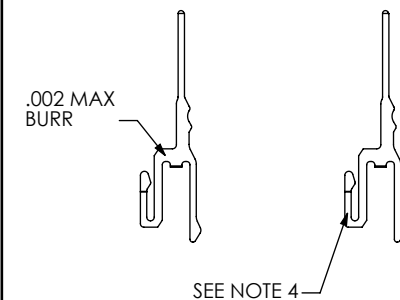


SECTION "A"-"A"
SCALE 5:1



SECTION "B"-"B"
SCALE 5:1

TERMINAL DETAILS



PROPRIETARY NOTE

THIS DOCUMENT CONTAINS INFORMATION
CONFIDENTIAL AND PROPRIETARY TO
SAMTEC, INC. AND SHALL NOT BE REPRODUCED
OR TRANSFERRED TO OTHER DOCUMENTS OR
DISCLOSED TO OTHERS OR USED FOR ANY
PURPOSE OTHER THAN THAT WHICH IT WAS
OBTAINED WITHOUT THE EXPRESSED WRITTEN
CONSENT OF SAMTEC, INC.

DO NOT SCALE DRAWING

SHEET SCALE: 1:0.4

samtec

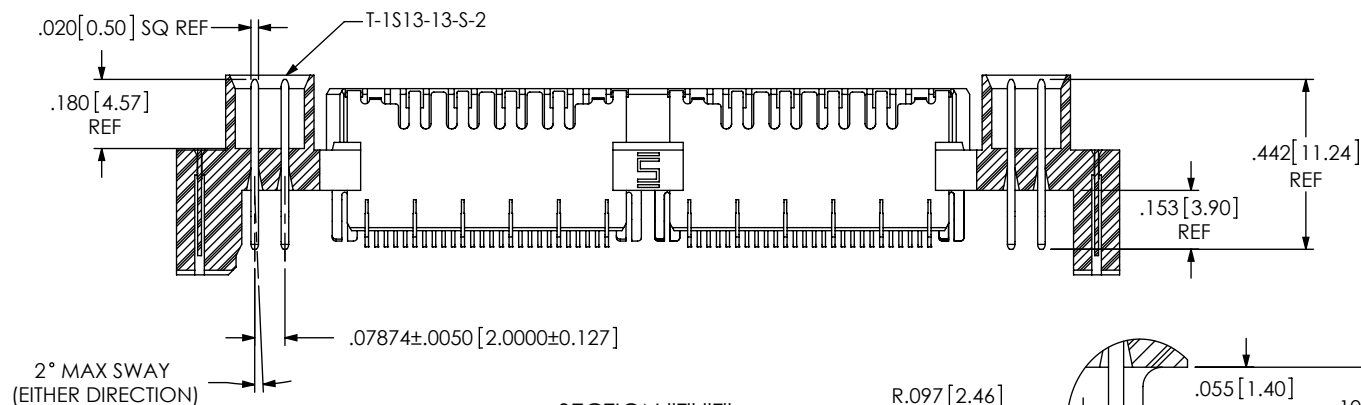
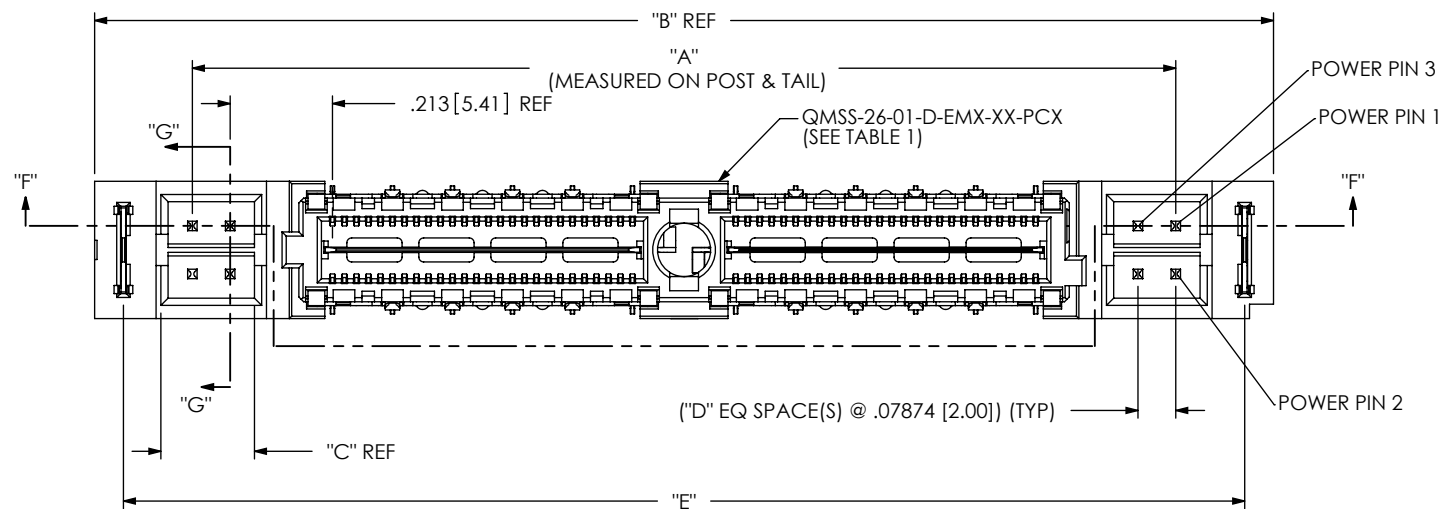
520 PARK EAST BLVD, NEW ALBANY, IN 47150
PHONE: 812-944-6733 FAX: 812-948-5047
e-Mail: info@SAMTEC.com code: 55322

DESCRIPTION:
.635mm DOUBLE ROW SHIELDED EDGE MOUNT TERMINAL STRIP

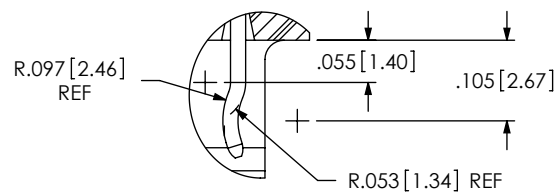
DWG. NO.
QMSS-XXX-XX-X-D-EM2-XXX-XX

BY: BRATCHER 11/22/2002 SHEET 2 OF 3

FIG 2 -PCX OPTION
 QMSS-052-01-X-D-EM2-PC4 SHOWN
 [DIFFERENT AS SHOWN, OTHERWISE SAME AS FIG 1]
 [AVAILABLE ON -026, -052 & -078 POSITIONS ONLY]

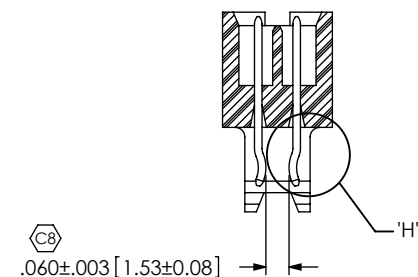
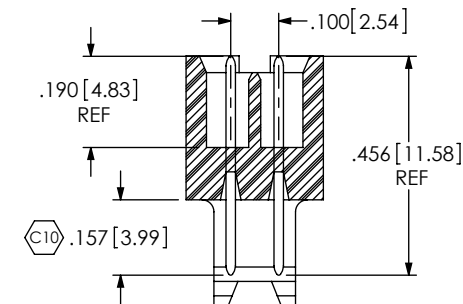


SECTION "F"-"F"
 SCALE 2 : 1



DETAIL 'H'
 SCALE 4 : 1

IN-PROCESS



SECTION "G"-"G"
 SCALE 2 : 1

TABLE 1

ASSEMBLY	USE BODY	"A"	"B"	"C"	"D"	"E"
QMSS-026-01-X-D-EM2-PC4	QMSS-26-01-D-EM2-01-PC4	1.209 [30.70]	1.616 [41.05]	.180[4.57]	1	1.496[38.00]
QMSS-026-01-X-D-EM2-PC8	QMSS-26-01-D-EM2-01-PC8	1.524 [38.70]	1.931 [49.05]	.337[8.57]	3	1.811[46.00]
QMSS-052-01-X-D-EM2-PC4	QMSS-26-01-D-EM2-02-PC4	2.049 [52.04]	2.456 [62.38]	.180[4.57]	1	2.336[59.34]
QMSS-052-01-X-D-EM2-PC8	QMSS-26-01-D-EM2-02-PC8	2.364 [60.04]	2.771 [70.38]	.337[8.57]	3	2.651[67.34]
QMSS-078-01-X-D-EM2-PC4	QMSS-26-01-D-EM2-03-PC4	2.889 [73.37]	3.296 [83.72]	.180[4.57]	1	3.176[80.67]
QMSS-078-01-X-D-EM2-PC8	QMSS-26-01-D-EM2-03-PC8	3.204 [81.37]	3.611 [91.72]	.337[8.57]	3	3.491[88.67]

PROPRIETARY NOTE

THIS DOCUMENT CONTAINS INFORMATION CONFIDENTIAL AND PROPRIETARY TO SAMTEC, INC. AND SHALL NOT BE REPRODUCED OR TRANSFERRED TO OTHER DOCUMENTS OR DISCLOSED TO OTHERS OR USED FOR ANY PURPOSE OTHER THAN THAT WHICH IT WAS OBTAINED WITHOUT THE EXPRESSED WRITTEN CONSENT OF SAMTEC, INC.

DO NOT SCALE DRAWING

SHEET SCALE: 1:0.4

samtec

520 PARK EAST BLVD, NEW ALBANY, IN 47150
 PHONE: 812-944-6733 FAX: 812-948-5047
 e-Mail: info@SAMTEC.com code: 55322

DESCRIPTION:

.635mm DOUBLE ROW SHIELDED EDGE MOUNT TERMINAL STRIP

DWG. NO.

QMSS-XXX-XX-X-D-EM2-XXX-XX

BY: BRATCHER 11/22/2002 SHEET 3 OF 3