

DO NOT SCALE  
FROM THIS PRINT

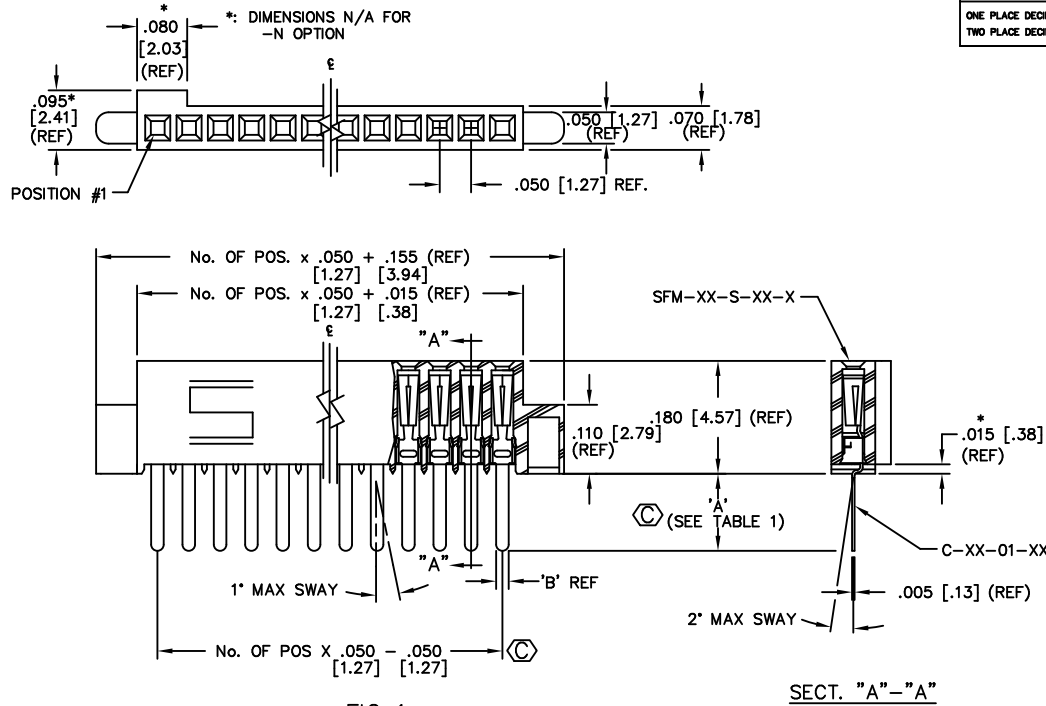


FIG 1  
THROUGH HOLE/STRAIGHT MODIFIED

DIFFERENT AS SHOWN OTHERWISE SAME AS FIG. 1

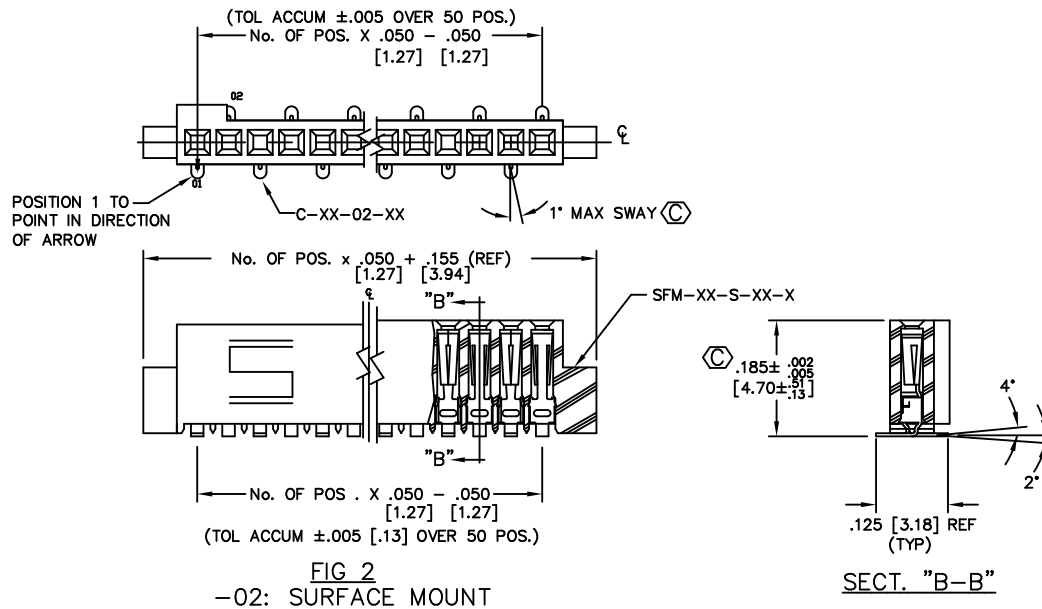


FIG 2  
-02: SURFACE MOUNT

SFM-1XX-XX-XX-S-XX

- NO. OF POSITIONS  
ALL POSITIONS AVAILABLE  
-2 THRU -50  
USE BODY: (SFM-XX-S-XX-X)
- LEAD STYLE
- 01: THROUGH HOLE  
USE CONTACT: (C-44-01-XX) (SEE FIG. 1)
  - 02: SURFACE MOUNT  
USE CONTACT: (C-44-02-XX) (SEE FIG. 2)
  - 03: STRAIGHT MODIFIED  
USE CONTACT: (C-44-03-XX) (SEE FIG. 1)
  - L1: THROUGH HOLE (LOW INSERTION)  
USE CONTACT: (C-61-01-XXX) (SEE FIG. 1)
  - L2: SURFACE MOUNT (LOW INSERTION)  
USE CONTACT: (C-61-02-XXX) (SEE FIG. 2)
  - L3: STRAIGHT MODIFIED (LOW INSERTION)  
USE CONTACT: (C-61-03-XXX) (SEE FIG. 1)
  - T1: THROUGH HOLE (PHOS BRONZE)  
USE CONTACT: (C-119-01-XXX) (SEE FIG. 1)
  - T2: SURFACE MOUNT (PHOS BRONZE)  
USE CONTACT: (C-119-02-XXX) (SEE FIG. 1)
- OPTIONS  
(LEAVE BLANK FOR STANDARD AND USE SFM-XX-S-LC-X)  
-N: NO POLARIZATION NOTCH (USE SFM-XX-S-XX-N)  
-A: ALIGNMENT PIN (USE SFM-XX-S-A-X) (SEE FIGURE 3)  
-LC: LOCKING CLIP (SEE FIGURE 5) (SEE NOTE 5) (USE (2) LC-05-TM & SFM-XX-S-LC-X)  
-P: PICK AND PLACE PAD (SEE FIGURE 4) (USE PPP-14)  
-K: POLYAMIDE FILM (SEE FIG. 6, SHT. 2)  
-TR: TAPE AND REEL (-X2 LEAD STYLE ONLY)  
\* -SN: SOLDER NAIL (SEE SHT. 3, FIG. 7)
- BODY SPECIFICATION  
-S: SINGLE ROW
- PLATING SPECIFICATION  
-S: 30μ SELECTIVE GOLD IN CONTACT AREA, MATTE TIN ON TAIL  
-F: 3μ SELECTIVE GOLD IN CONTACT AREA, MATTE TIN ON TAIL  
-L: 10μ SELECTIVE GOLD IN CONTACT AREA, MATTE TIN ON TAIL  
-SM: 30μ SELECTIVE GOLD IN CONTACT AREA, MATTE TIN ON TAIL  
-FM: 3μ SELECTIVE GOLD IN CONTACT AREA, MATTE TIN ON TAIL  
-LM: 10μ SELECTIVE GOLD IN CONTACT AREA, MATTE TIN ON TAIL
- \* = NOT TOOLED

- LM: SELECTIVE LIGHT GOLD
- SPECIFY -L IN PLATING SUFFIX -X/ MATTE TIN TAILS (USE C-XX-XX-L)

TABLE 1

SUFFIX	TAIL LENGTH "A"	TAIL WIDTH "B"
-01, -L1	.120 [3.05]	.020 [.51]
-03, -L3	.075 [1.91]	.016 [.41]

NOTES:

1. MIN. PUSHOUT FORCE: .5 lb.
2. COPLANARITY TO BE WITHIN .004 [.10].
3. (C) REPRESENTS CRITICAL DIMENSION FOR STATISTICAL PROCESS CONTROL.
4. TUBE ALL POSITIONS.
5. DUE TO THE HIGH AMOUNT OF INSERTION FORCE NEEDED, THE -LC OPTION IS NOT COMPATIBLE WITH AUTO PLACEMENT. SAMTEC RECOMMENDS MANUAL PLACEMENT FOR ALL ASSEMBLIES WITH THE -LC OPTION.

**PROPRIETARY NOTE**  
THIS DOCUMENT CONTAINS INFORMATION CONFIDENTIAL AND PROPRIETARY TO SAMTEC INC. AND SHALL NOT BE REPRODUCED OR TRANSMITTED IN ANY FORM OR BY ANY MEANS, ELECTRONIC OR MECHANICAL, INCLUDING PHOTOCOPYING, RECORDING, OR BY ANY INFORMATION STORAGE AND RETRIEVAL SYSTEM, WITHOUT THE EXPRESS WRITTEN CONSENT OF SAMTEC INC.

MATERIAL:  
INSULATOR:  
LCP, UL 94 VO  
CONTACT:  
BeCu

**samtec**

EXISPROD\ASSEMBLY\050 SFMASMS1  
520 PARK EAST BLVD. NEW ALBANY, INDIANA 47150  
PHONE (812) 944-6733 P.O. BOX 1147  
CODE 55322

MADE BY: REIDINGER 9-8-92  
CHECKED BY: McCARTIN  
ENG. APPROVAL: DEM  
SFM-1XX-XX-XX-S-XX  
SHEET 1 OF 3