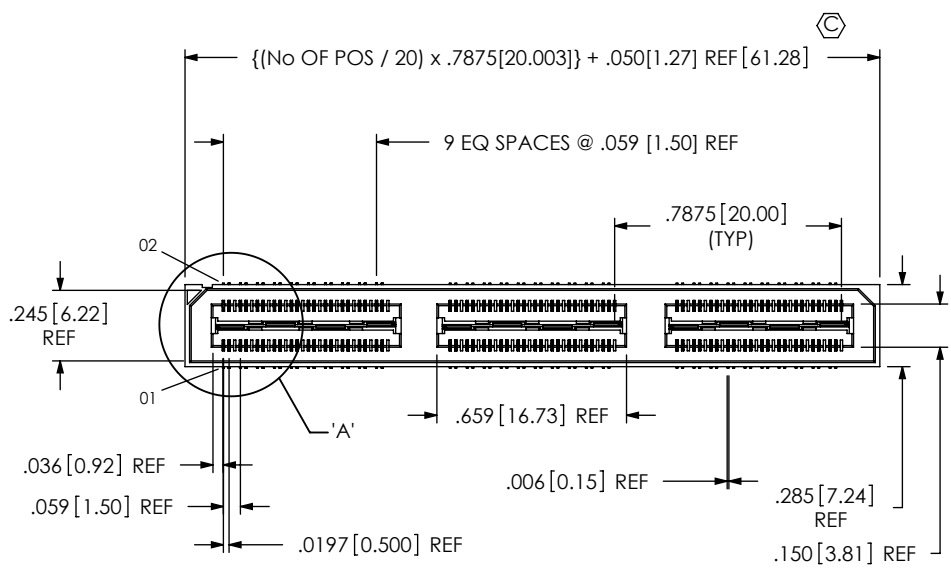


DO NOT SCALE FROM THIS PRINT



QSH-XXX-XX-X-D-DP-XXX

- No OF POSITIONS
  - 020, -040, -060, \*\*080, \*\*100 (PER ROW)
- LEAD STYLE
  - 01: .1280 [3.251]
- PLATING SPECIFICATION (SEE NOTE 11)
  - F: 3u" FLASH SELECTIVE IN CONTACT AREA, MATTE TIN ON TAIL (USE T-1G2-01-F) (SEE NOTE 9)
  - L: 10u" LIGHT SELECTIVE GOLD IN CONTACT AREA, MATTE TIN ON TAIL (USE T-1G2-01-L) (SEE NOTE 9)
  - H: 30u" HEAVY GOLD IN CONTACT AREA, 3u" GOLD ON TAIL (USE T-1G2-01-G)
  - C: 50u" ELECTRO-POLISHED SELECTIVE GOLD IN CONTACT AREA, MATTE TIN ON TAIL (USE T-1G2-01-L) (SEE NOTE 9)
- OPTION
  - A: ALIGNMENT PINS (USE QSH-30-01-D-XX-A, SEE FIG 2)
  - GP: GUIDE POSTS (USE QSH-30-01-D-XX-GP, SEE FIG 4)
  - LC: LOCKING CLIPS (SEE NOTE 12) (USE LC-08-TM-01, SEE FIG 1)
  - K: POLYIMIDE FILM PAD (USE K-DOT-.325-.450-.005, SEE FIG. 3)
  - TR: TAPE & REEL (60 POS MAX)
  - TY: TRAY PACKAGING (NOT AVAILABLE WITH -TR)
  - FL: FRICTION LOCKS (SEE FIG 5, SHEET 3) (NOT AVAILABLE WITH -GP)
  - RT1: RETENTION (MUST USE -A OPTION) (USE QSH-30-01-D-XX-A-RT1 & SUB-SC-05-01-FF) (SEE FIG 6, SHEET 3) (NOT AVAILABLE WITH -LC, -GP, OR -FL) (NOT AVAILABLE WITH -080 & -100 POS)
  - L: LATCHING (SEE FIG 7, SHEET 4) (USE QSH-30-01-D-XX-A-L) (NOT AVAILABLE WITH -LC, -GP, -FL, OR -RT1)
- DIFFERENTIAL PAIRS
  - ROW SPECIFICATION
    - D: DOUBLE (USE QSH-30-01-D-XX)
- No OF BANKS

C-126-01-X CAN BE SUBBED FOR C-126-21-X  
\*\* = SEE NOTE 10

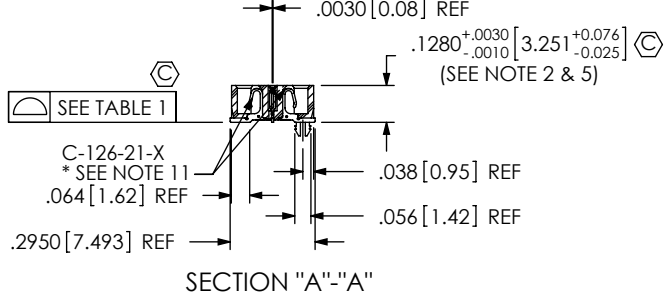
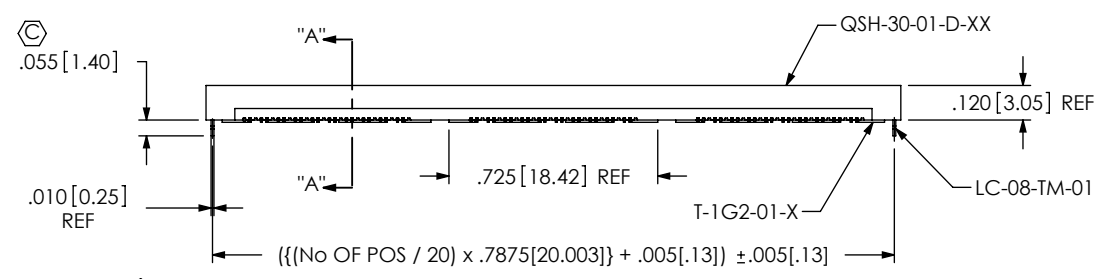


FIG 1  
-LC: LOCKING CLIP OPTION SHOWN

TABLE 1	
No OF POS	COPLANARITY (INCLUDES GROUND PLANE)
-020 THRU -060	.0040[.102]
-080 THRU -100	.0060[.152]

- NOTES:
1.  $\text{\textcircled{C}}$  REPRESENTS A CRITICAL DIMENSION.
  2. MAX VARIANCE: .002 [0.05]
  3. MAX BURR ALLOWANCE: .0015 [0.038]
  4. MINIMUM PUSHOUT FORCE: 4 OZ
  5. DIM APPLIES TO GROUND PLANE AND CONTACT.
  6. MINIMUM GROUND PLANE RETENTION: 8 OZ
  7. -L PLATING CAN BE SUBSTITUTED FOR -F PLATING.
  8. SUB-SC-05-01-XX RETENTION TO BE 1.0 LBF IN BODY.
  9. MAY SUB C-126-01-X for C-126-21-X.
  10. FOR NEW APPLICATIONS REQUIRING THESE POSITIONS PLEASE CONTACT SAMTEC INTERCONNECT PROCESSING GROUP.
  11. FOR -80, -100 POSITIONS USE C-269-11-X. DO NOT SUB C-126.
  12. DUE TO THE HIGH AMOUNT OF INSERTION FORCE NEEDED, THE -LC OPTION IS NOT COMPATIBLE WITH AUTO PLACEMENT. SAMTEC RECOMMENDS MANUAL PLACEMENT FOR ALL ASSEMBLIES WITH THE -LC OPTION."

UNLESS OTHERWISE SPECIFIED, DIMENSIONS ARE IN INCHES.  
TOLERANCES ARE:  
DECIMALS ANGLES  
.XX:  $\pm .01 [3]$  2°  
.XXX:  $\pm .005 [13]$   
.XXXX:  $\pm .0020 [051]$

PROPRIETARY NOTE  
THIS DOCUMENT CONTAINS INFORMATION CONFIDENTIAL AND PROPRIETARY TO SAMTEC, INC. AND SHALL NOT BE REPRODUCED OR TRANSFERRED TO OTHER DOCUMENTS OR DISCLOSED TO OTHERS OR USED FOR ANY PURPOSE OTHER THAN THAT WHICH IT WAS OBTAINED WITHOUT THE EXPRESSED WRITTEN CONSENT OF SAMTEC, INC.



520 PARK EAST BLVD, NEW ALBANY, IN 47150  
PHONE: 812-944-6733 FAX: 812-948-5047  
e-Mail info@SAMTEC.com code 53322

MATERIAL: DO NOT SCALE DRAWING SHEET SCALE: 3:2  
INSULATOR: BLACK, LCP  
FLAMMABILITY RATING: UL94V0  
TERMINAL: PHOS BRONZE  
GROUND PLANE: PHOS BRONZE

DESCRIPTION: .5mm DIFFERENTIAL PAIRS HS SOCKET ASSEMBLY  
DWG. NO. QSH-XXX-XX-X-D-DP-XXX  
BY: KEVIN B 06/13/00 SHEET 1 OF 4

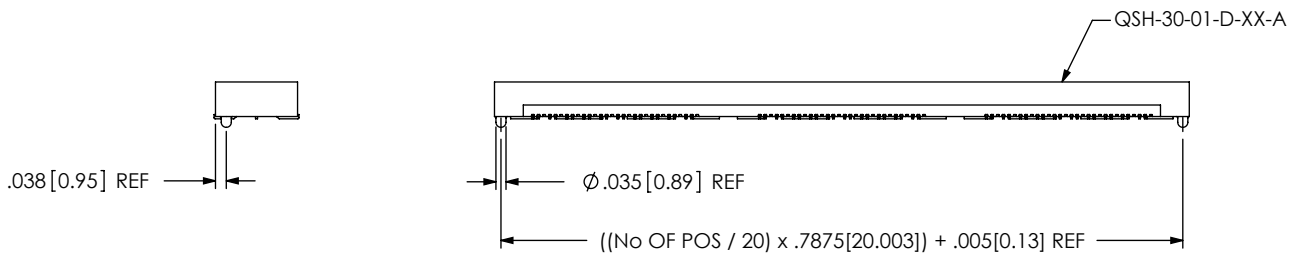


FIG 2  
-A: ALIGNMENT PIN OPTION SHOWN

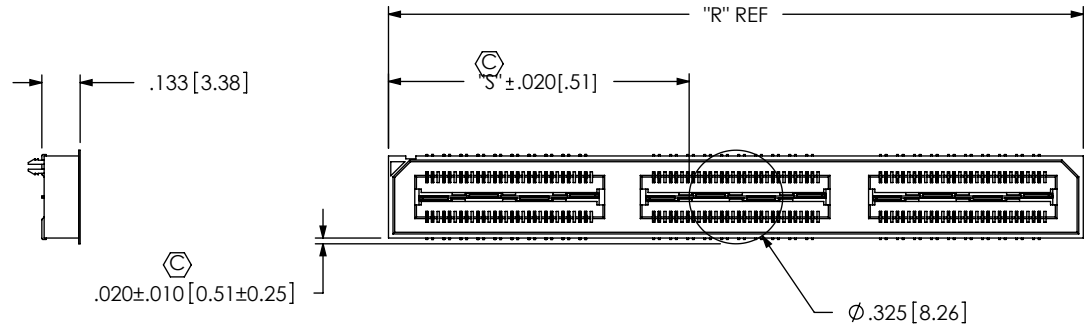
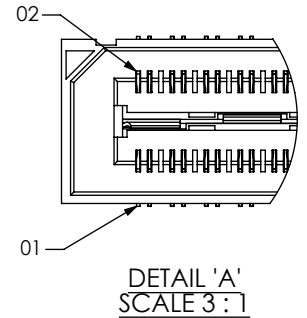



FIG 3  
-K: POLYIMIDE FILM PAD

NOTE: "R" = ((No OF POSITIONS / 20) x .7875[20.003]) + .050[1.27]  
 "S" = (("R" - .325[8.26]) / 2) ±.020[.51]

<p>PROPRIETARY NOTE                  THIS DOCUMENT CONTAINS INFORMATION CONFIDENTIAL AND PROPRIETARY TO SAMTEC, INC. AND SHALL NOT BE REPRODUCED OR TRANSFERRED TO OTHER DOCUMENTS OR DISCLOSED TO OTHERS OR USED FOR ANY PURPOSE OTHER THAN THAT WHICH IT WAS OBTAINED WITHOUT THE EXPRESSED WRITTEN CONSENT OF SAMTEC, INC.</p> <p>DO NOT SCALE DRAWING</p> <p>SHEET SCALE: 1.5:1</p>		
	<p>520 PARK EAST BLVD, NEW ALBANY, IN 47150                  PHONE: 812-944-6733 FAX: 812-948-5047                  e-Mail info@SAMTEC.com code 55322</p>	
	<p>DESCRIPTION:                  .5mm DIFFERENTIAL PAIRS HS SOCKET ASSEMBLY</p>	
	<p>DWG. NO.                  QSH-XXX-XX-X-D-DP-XXX</p>	
<p>BY: KEVIN B</p>	<p>06/13/00</p>	<p>SHEET 2 OF 4</p>

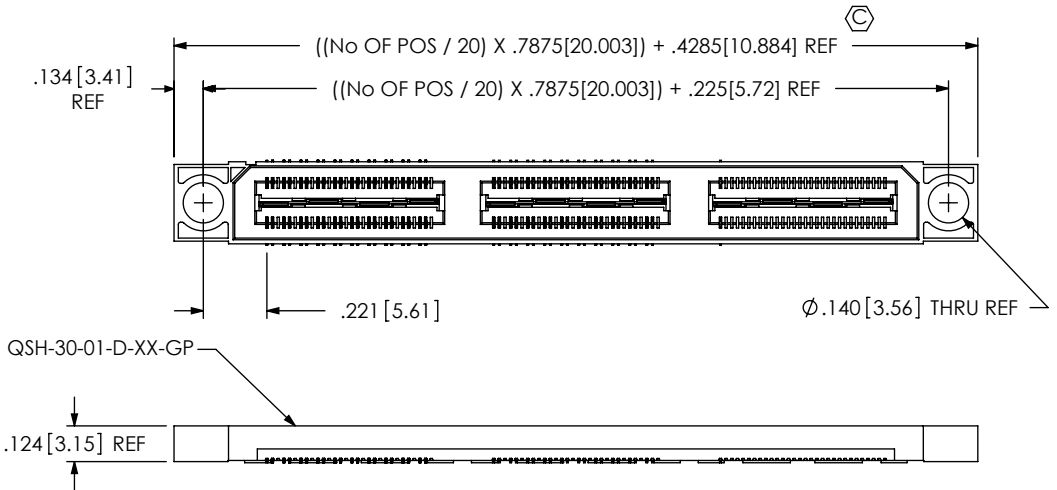
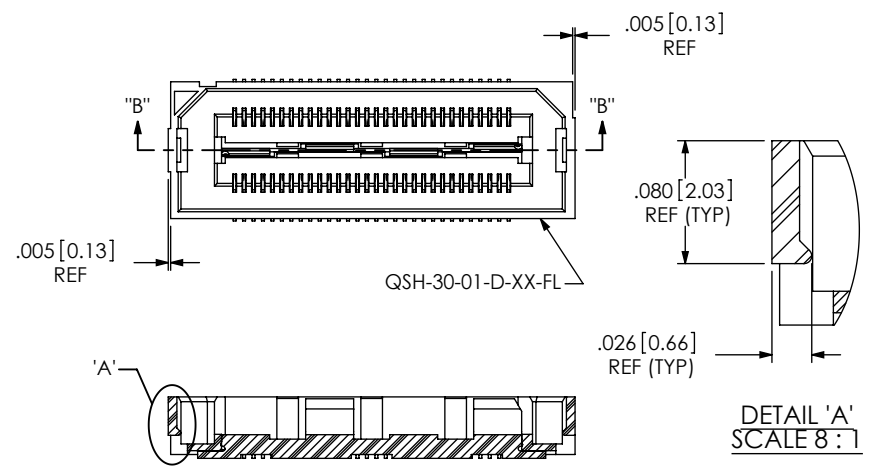
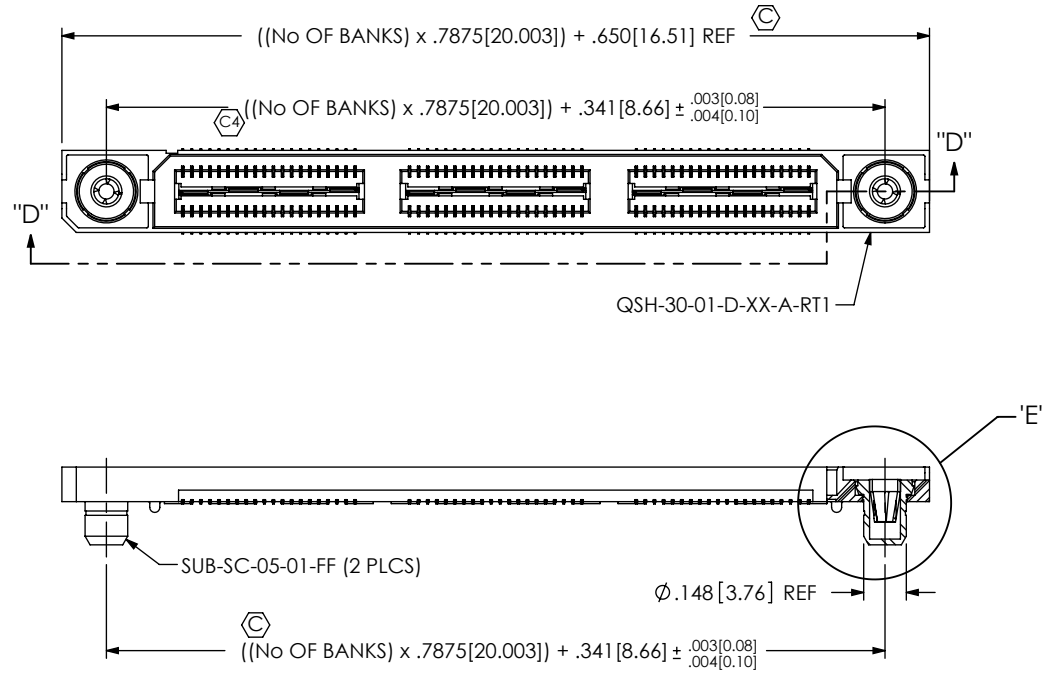


FIG 4  
-GP: GUIDE POST OPTION SHOWN

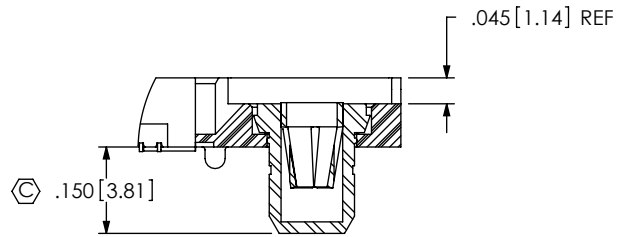


SECTION "B"-"B"  
FIG 5  
-FL: FRICTION LOCKS  
(NOT AVAILABLE WITH -GP OPTION)  
(SAME AS FIG 1, UNLESS OTHERWISE STATED)



SECTION "D"-"D"  
SCALE 1.5 : 1

FIG 6  
-RT1: RETENTION OPTION  
(MUST USE -A OPTION)  
(NOT AVAILABLE WITH -LC, -GP, OR -FL OPTIONS)  
(NOT AVAILABLE WITH -080 & -100 POS)  
(SAME AS FIG 1, UNLESS OTHERWISE STATED)



DETAIL 'E'  
SCALE 3 : 1

PROPRIETARY NOTE  
THIS DOCUMENT CONTAINS INFORMATION  
CONFIDENTIAL AND PROPRIETARY TO  
SAMTEC, INC. AND SHALL NOT BE REPRODUCED  
OR TRANSFERRED TO OTHER DOCUMENTS OR  
DISCLOSED TO OTHERS OR USED FOR ANY  
PURPOSE OTHER THAN THAT WHICH IT WAS  
OBTAINED WITHOUT THE EXPRESSED WRITTEN  
CONSENT OF SAMTEC, INC.

DO NOT SCALE DRAWING  
SHEET SCALE: 1.25:1



520 PARK EAST BLVD, NEW ALBANY, IN 47150  
PHONE: 812-944-6733 FAX: 812-948-5047  
e-Mail: info@SAMTEC.com code 55322

DESCRIPTION:  
.5mm DIFFERENTIAL PAIRS HS SOCKET ASSEMBLY

DWG. NO.  
QSH-XXX-XX-X-D-DP-XXX

BY: KEVIN B 06/13/00 SHEET 3 OF 4

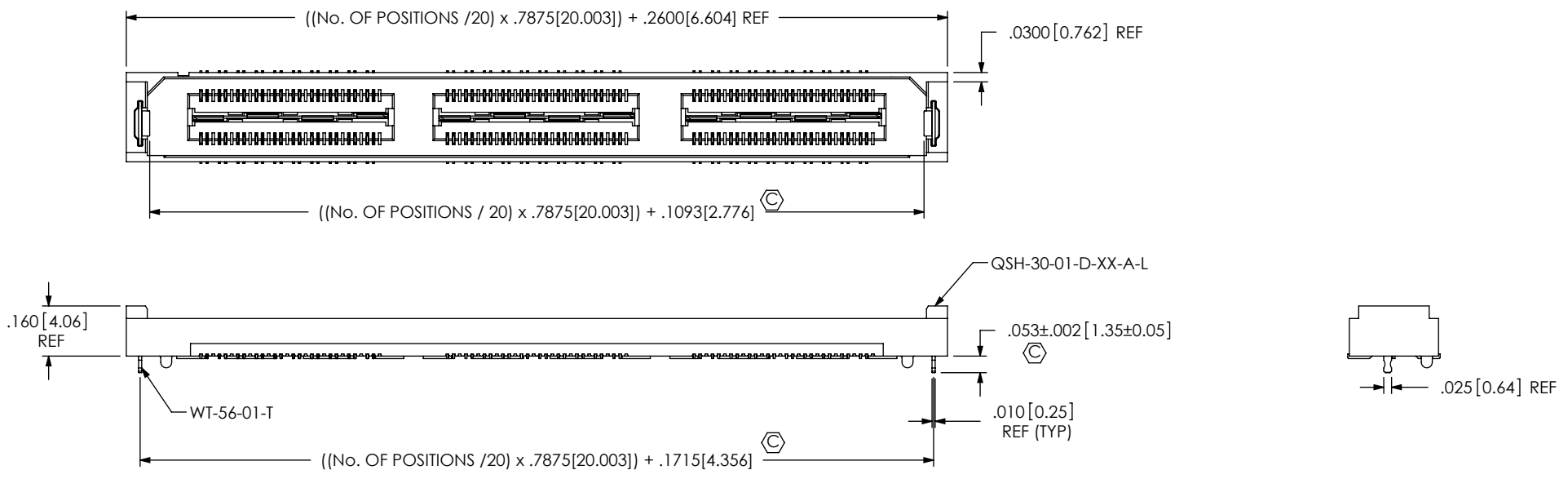



FIG 7  
 -L: RETENTION OPTION  
 (NOT AVAILABLE WITH -LC, -GP, -FL, OR -RT1 OPTIONS)  
 (SAME AS FIG 1, UNLESS OTHERWISE STATED)

<p>PROPRIETARY NOTE</p> <p>THIS DOCUMENT CONTAINS INFORMATION CONFIDENTIAL AND PROPRIETARY TO SAMTEC, INC. AND SHALL NOT BE REPRODUCED OR TRANSFERRED TO OTHER DOCUMENTS OR DISCLOSED TO OTHERS OR USED FOR ANY PURPOSE OTHER THAN THAT WHICH IT WAS OBTAINED WITHOUT THE EXPRESSED WRITTEN CONSENT OF SAMTEC, INC.</p> <p>DO NOT SCALE DRAWING</p> <p>SHEET SCALE: 2:1</p>		
	<p>520 PARK EAST BLVD, NEW ALBANY, IN 47150                  PHONE: 812-944-6733 FAX: 812-948-5047                  e-Mail info@SAMTEC.com code 55322</p>	
	<p>DESCRIPTION:                  .5mm DIFFERENTIAL PAIRS HS SOCKET ASSEMBLY</p>	
	<p>DWG. NO.                  QSH-XXX-XX-X-D-DP-XXX</p>	
<p>BY: KEVIN B</p>	<p>06/13/00</p>	<p>SHEET 4 OF 4</p>