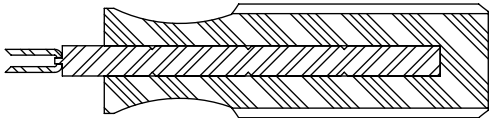
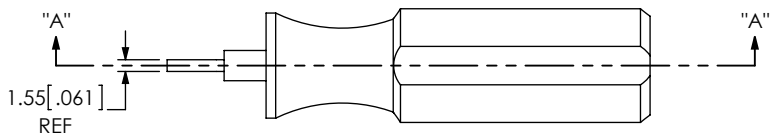
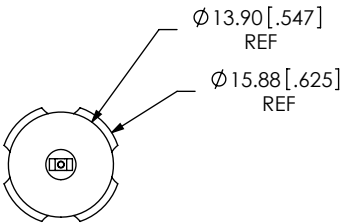
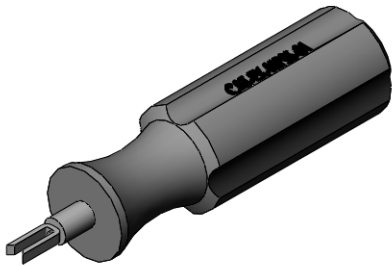
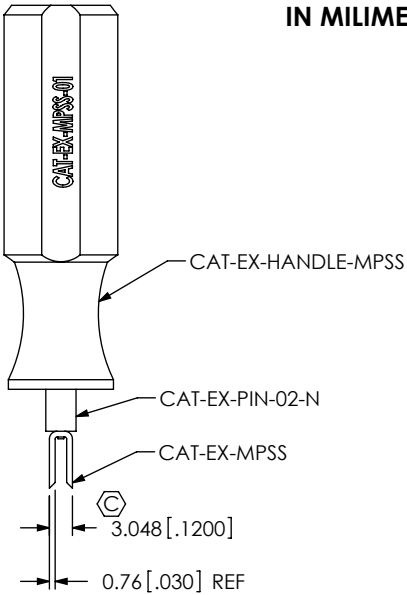


DO NOT
SCALE FROM
THIS PRINT


DESIGNED AND DIMENSIONED
IN MILLIMETERS[INCHES]



SECTION "A"-"A"

NOTES:

1. BURR ALLOWANCE: .0020[0.051] MAX.
2. PARTS TO BE RECEIVED FROM VENDOR IN TRAY PACKAGING.
3. CAT-EX-PIN-02-N TO BE INSERT MOLDED IN CAT-EX-HANDLE-MPSS
4. MINIMUM SHAFT PULLOUT: 22.24 N [5.00 LBS]
5. MINIMUM SHAFT SPINOUT: .15 N/M [.034 LBS/IN]

UNLESS OTHERWISE SPECIFIED, DIMENSIONS ARE IN MILLIMETERS. TOLERANCES ARE: DECIMALS ANGLES X.XX: ±0.3 [.01] 2° X.XXX: ±0.05 [.002] X.XXXX: ±0.025 [.0010]		PROPRIETARY NOTE THIS DOCUMENT CONTAINS INFORMATION CONFIDENTIAL AND PROPRIETARY TO SAMTEC, INC. AND SHALL NOT BE REPRODUCED OR TRANSFERRED TO OTHER DOCUMENTS OR DISCLOSED TO OTHERS OR USED FOR ANY PURPOSE OTHER THAN THAT WHICH IT WAS OBTAINED WITHOUT THE EXPRESSED WRITTEN CONSENT OF SAMTEC, INC.		 520 PARK EAST BLVD, NEW ALBANY, IN 47150 PHONE: 812-944-6733 FAX: 812-948-5047 e-Mail: info@SAMTEC.com code: 55322	
MATERIAL: DO NOT SCALE DRAWING SHEET SCALE: 1:1		DESCRIPTION: MPSS CONTACT EXTRACTION TOOL			
HANDLE: PVC TOOL HEAD: SPRING STEEL PIN: STEEL-1215		DWG. NO. CAT-EX-MPSS-01			
c:\enterprise\ault\DWG\MISC\MKTG\CAT-EX-MPSS-01-MKT.SLDDRW		BY: B RAY 05/08/2008		SHEET 1 OF 1	