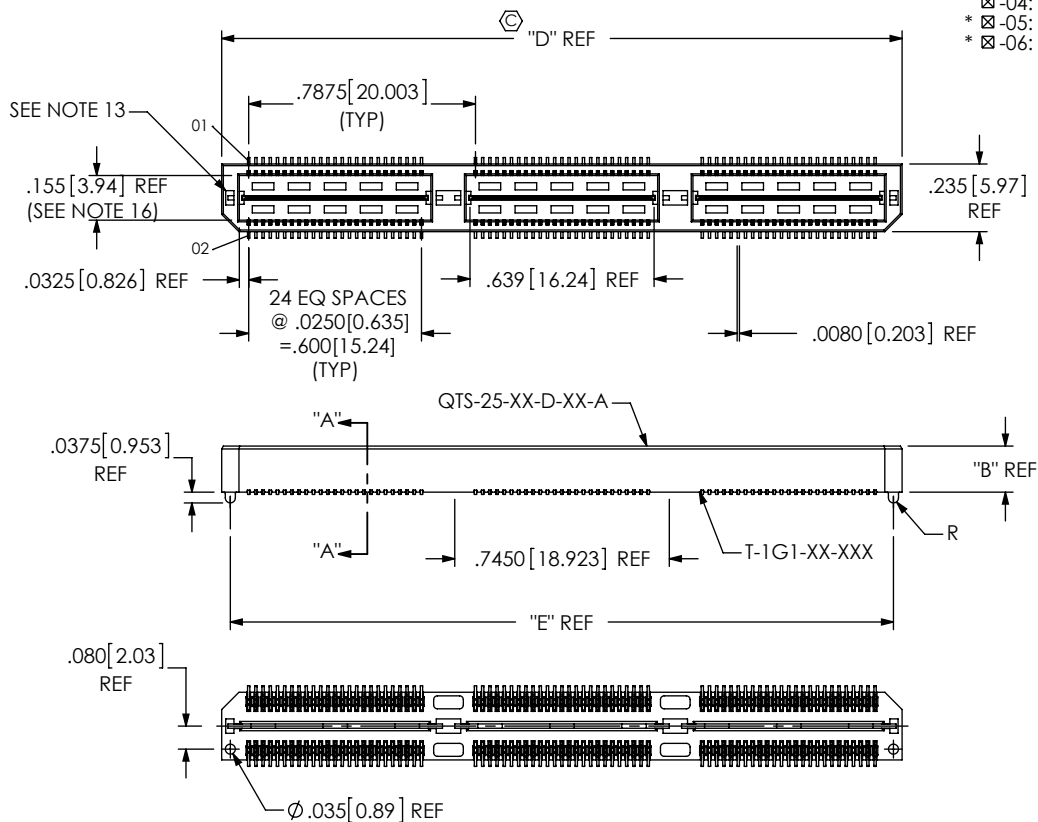


DO NOT  
SCALE FROM  
THIS PRINT

TABLE 1						MATED HEIGHT WITH QSS-01
STYLE	"A"	"B"	BODY	GROUND PLANE	TERMINAL	
-01	.1680[4.267]	.1600[4.064]	QTS-25-01-D-XX	T-1G1-01-XXX	T-1S56-01-XXX	.197[5.00] REF
-02	.2861[7.267]	.2781[7.064]	QTS-25-02-D-XX	T-1G1-02-XXX	T-1S56-22-XXX	.315[8.00] REF

TABLE 6		
No. OF POS	"D"	"E"
-025	.788 [20.00]	.728 [18.48]
-050	1.575 [40.01]	1.515 [38.48]
-075	2.363 [60.01]	2.303 [58.48]
-100	3.150 [80.01]	3.090 [78.49]
-125	3.938 [100.01]	3.878 [98.49]

TABLE 2	
No OF POSITIONS	COPLANARITY (INCLUDES GND PLANE)
-025 THRU -075	.004[.10]
-100 THRU -125	.006[.15]



## NOTES:

1.  $\odot$  REPRESENTS A CRITICAL DIMENSION.
2. DELETED.
3. DELETED.
4. MINIMUM TERMINAL RETENTION: 6 OZ.
5. MINIMUM GROUND PLANE RETENTION: 1 LB.
6. DELETED.
7. PARTS TO BE MOLDED TO POSITION.
8. MAXIMUM VARIANCE OF .002[0.05].
9. DIMENSION APPLIES TO TERMINALS AND GROUND PLANES INDEPENDENT OF THE GROUND PLANE OR TERMINAL RESPECTIVELY.
10. LEAD STYLES -03 AND -05: TOP BODY (QTS) CANNOT HAVE -A OPTION AND -04 AND -06 CAN USE EITHER -A OR -LC BODY.
11. T-1SXX-XX-L CAN BE SUBSTITUTED FOR T-1SXX-XX-F.
12. GROUND PLANE PRESS HEIGHT MUST BE .003[.08] LESS THAN THE MAX HEIGHT OR .001[0.03] GREATER THAN THE MINIMUM HEIGHT OF THE TERMINALS.
13. WINDOW NOT PRESENT ON LEAD STYLES -02 THRU -06 HEIGHT PER REV. E OF THE QTS-25-XX-D-XX-X-XX.
14. FOR NEW APPLICATIONS REQUIRING THESE POSITIONS, PLEASE CONTACT SAMTEC INTERCONNECT PROCESSING GROUP.
15. DUE TO THE HIGH AMOUNT OF INSERTION FORCE NEEDED, THE -LC OPTION IS NOT COMPATIBLE WITH AUTO PLACEMENT. SAMTEC RECOMMENDS MANUAL PLACEMENT FOR ALL ASSEMBLIES WITH THE -LC OPTION.
16. PIN CAN EXTEND PAST WALL .003[0.08] MAX.

FIG 1

-A: ALIGNMENT PIN OPTION  
(QTS-075-01-XXX-D-A SHOWN)

## QTS-XXX-XX-XXX-D-XXX

## No OF POSITIONS

-025, -050, -075,  
\*\*-100, \*\*-125  
(PER ROW)  
\*\* (SEE NOTE 14)

## LEAD STYLE

-01: .1680[4.267]  
-02: .2861[7.264]  
☒ -03: .4043[10.269]  
☒ -04: .6001[15.246]  
\* ☒ -05: .7181[18.240]  
\* ☒ -06: .8361[21.237]

## OPTION

-LC: LOCKING CLIPS (SEE NOTE 10 AND NOTE 15)  
(USE LC-08-TM-01)  
-A: ALIGNMENT PINS (SEE NOTE 10)  
(USE QTS-25-XX-D-XX-A)  
-K: POLYIMIDE FILM PAD  
(USE K-DOT-.276-.375-.005, SEE FIG 3, SHT 2)  
-GP: GUIDE POST, (SEE FIG 4, SHT 2)  
(AVAILABLE ON STYLE -01 ONLY)  
-TR: TAPE & REEL (75 POS MAX)  
(N/A ON STYLE -05 & -06)

## ROW SPECIFICATION

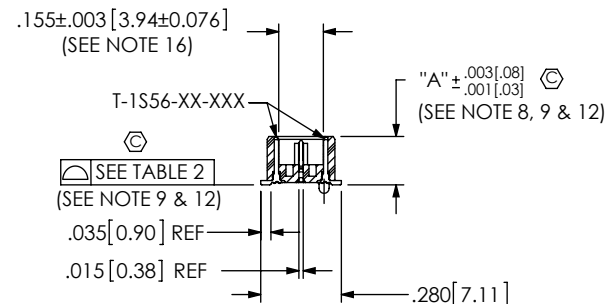
-D: DOUBLE (USE QTS-25-XX-D-XX  
& QTSH-25-XX-D-XX)

## No OF BANKS

## PLATING SPECIFICATION

-F: 3μ" FLASH SELECTIVE GOLD IN  
CONTACT AREA, MATTE TIN ON TAIL  
(USE T-1SXX-XX-F & T-1G1-XX-F) (SEE NOTE 11)  
-L: 10μ" LIGHT SELECTIVE GOLD IN  
CONTACT AREA, MATTE TIN ON TAIL  
(USE T-1SXX-XX-L & T-1G1-XX-L)  
-H: 30μ" HEAVY GOLD IN CONTACT AREA,  
3μ" GOLD ON TAIL  
(USE T-1SXX-XX-H & T-1G1-XX-G)  
-C: 50μ" HEAVY GOLD IN CONTACT AREA,  
MATTE TIN ON TAIL  
(USE T-1SXX-XX-C & T-1G1-XX-L)  
-STL: 30μ" HEAVY SELECTIVE GOLD IN  
CONTACT AREA, TIN LEAD ON TAIL  
(USE T-1SXX-XX-STL & T-1G1-XX-STL)  
-FTL: 3μ" FLASH SELECTIVE GOLD IN  
CONTACT AREA, TIN LEAD ON TAIL  
(USE T-1SXX-XX-FTL & T-1G1-XX-FTL)

☒ = SEE SHEET 3  
\* = NOT TOOLED



## SECTION "A"-"A"

UNLESS OTHERWISE SPECIFIED,  
DIMENSIONS ARE IN INCHES.

TOLERANCES ARE:

DECIMALS ANGLES  
.XX: ±.01[.3]  
.XXX: ±.005[.13]  
.XXXX: ±.0020[.051]

## PROPRIETARY NOTE

THIS DOCUMENT CONTAINS INFORMATION  
CONFIDENTIAL AND PROPRIETARY TO  
SAMTEC, INC. AND SHALL NOT BE REPRODUCED  
OR TRANSFERRED TO OTHER DOCUMENTS OR  
DISCLOSED TO OTHERS OR USED FOR ANY  
PURPOSE OTHER THAN THAT WHICH IT WAS  
OBTAINED WITHOUT THE EXPRESSED WRITTEN  
CONSENT OF SAMTEC, INC.

MATERIAL: DO NOT SCALE DRAWING SHEET SCALE: 1.5:1

INSULATOR: LCP, UL94V-0; COLOR: BLACK  
TERMINAL: PHOS BRONZE  
GROUND PLANE: PHOS BRONZE

DESCRIPTION:

H.635mm DOUBLE ROW HS TERMINAL ASSEMBLY

DWG. NO.

QTS-XXX-XX-XXX-D-XXX

BY: DEAN P

09-14-2010

SHEET 1 OF 3

F:\DWG\MISC\MKTG\QTS-XXX-XX-XXX-D-XXX-MKT.SLDDRW

# samtec

520 PARK EAST BLVD, NEW ALBANY, IN 47150  
PHONE: 812-944-6733 FAX: 812-948-5047  
e-Mail: info@SAMTEC.com code: 55322

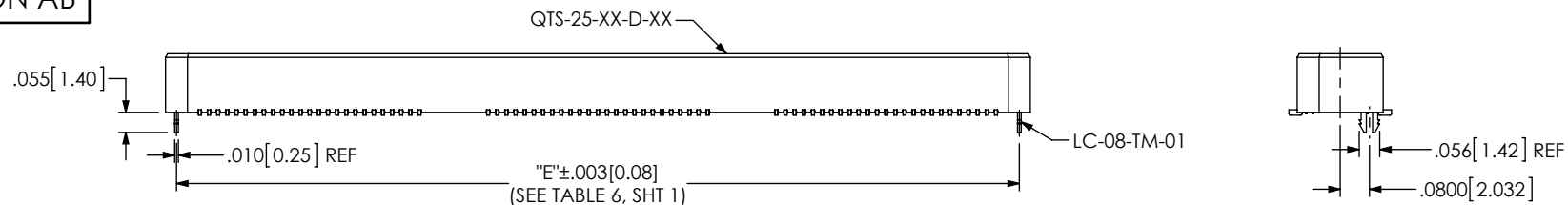


FIG 2  
-LC: LOCKING CLIP OPTION  
(QTS-075-01-XXX-D-LC SHOWN)  
(DIFFERENT AS SHOWN, OTHERWISE SAME AS FIG 1)

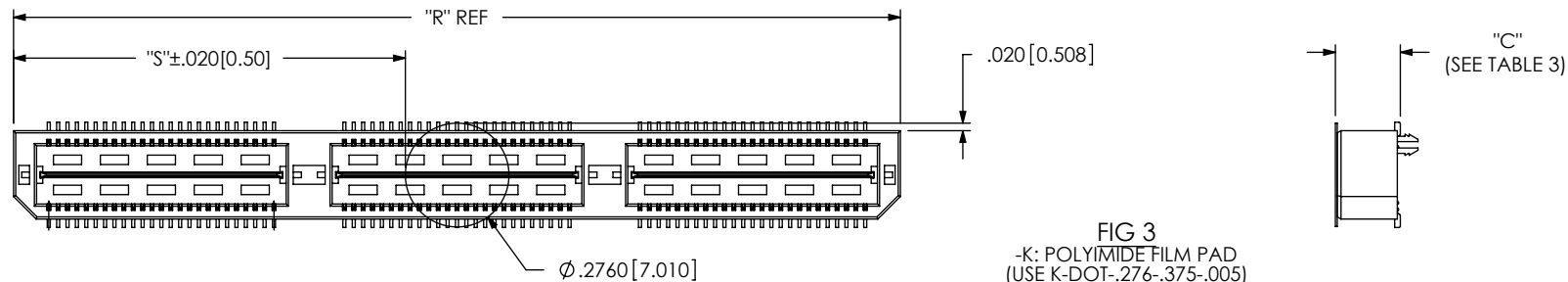


FIG 3  
-K: POLYIMIDE FILM PAD  
(USE K-DOT-.276-.375-.005)

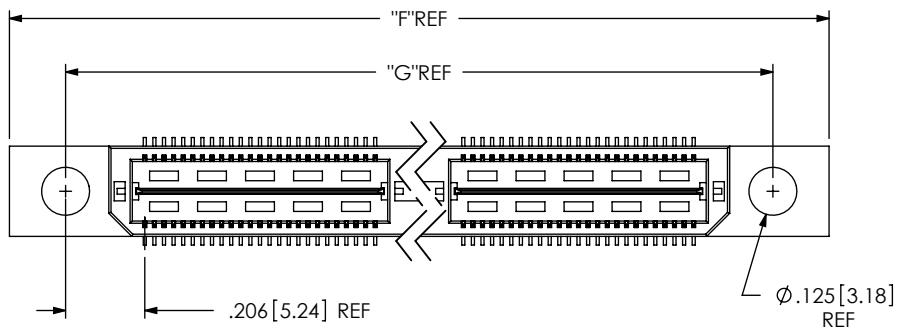


FIG 4  
-GP: GUIDE POST OPTION  
(QTS-075-01-XXX-D-GP SHOWN)  
(DIFFERENT AS SHOWN, OTHERWISE SAME AS FIG 1)  
(AVAILABLE ON STYLE -01 ONLY)

TABLE 7				
No OF POS	"R"		"S"	
	-LC, -A	-GP	-LC, -A	-GP
-025	.788 [20.00]	1.305 [33.15]	.256 [6.50]	.515 [13.07]
-050	1.575 [40.01]	2.093 [53.15]	.650 [16.50]	.908 [23.07]
-075	2.363 [60.01]	2.880 [73.15]	1.043 [26.50]	1.302 [33.07]
-100	3.150 [80.01]	3.668 [93.15]	1.437 [36.50]	1.696 [43.07]
-125	3.938 [100.01]	4.455 [113.16]	1.831 [46.50]	2.090 [53.07]

TABLE 8		
POS	"F"	"G"
-025	1.305 [33.15]	1.013 [25.72]
-050	2.093 [53.15]	1.800 [45.72]
-075	2.880 [73.15]	2.588 [65.72]
-100	3.668 [93.15]	3.375 [85.73]
-125	4.455 [113.16]	4.163 [105.73]

TABLE 3	
STYLE	"C"
-01	.173 [4.39]
-02	.291 [7.39]
-03	.409 [10.39]
-04	.605 [15.37]
-05	.723 [18.36]
-06	.841 [21.36]

PROPRIETARY NOTE  
THIS DOCUMENT CONTAINS INFORMATION  
CONFIDENTIAL AND PROPRIETARY TO  
SAMTEC, INC. AND SHALL NOT BE REPRODUCED  
OR TRANSFERRED TO OTHER DOCUMENTS OR  
DISCLOSED TO OTHERS OR USED FOR ANY  
PURPOSE OTHER THAN THAT WHICH IT WAS  
OBTAINED WITHOUT THE EXPRESSED WRITTEN  
CONSENT OF SAMTEC, INC.

DO NOT SCALE DRAWING

SHEET SCALE: 2:1

**samtec**

520 PARK EAST BLVD, NEW ALBANY, IN 47150  
PHONE: 812-944-6733 FAX: 812-948-5047  
e-Mail: info@SAMTEC.com code: 55322

DESCRIPTION:  
H.635mm DOUBLE ROW HS TERMINAL ASSEMBLY

DWG. NO. QTS-XXX-XX-XXX-D-XXX

BY: DEAN P 09-14-2010 SHEET 2 OF 3

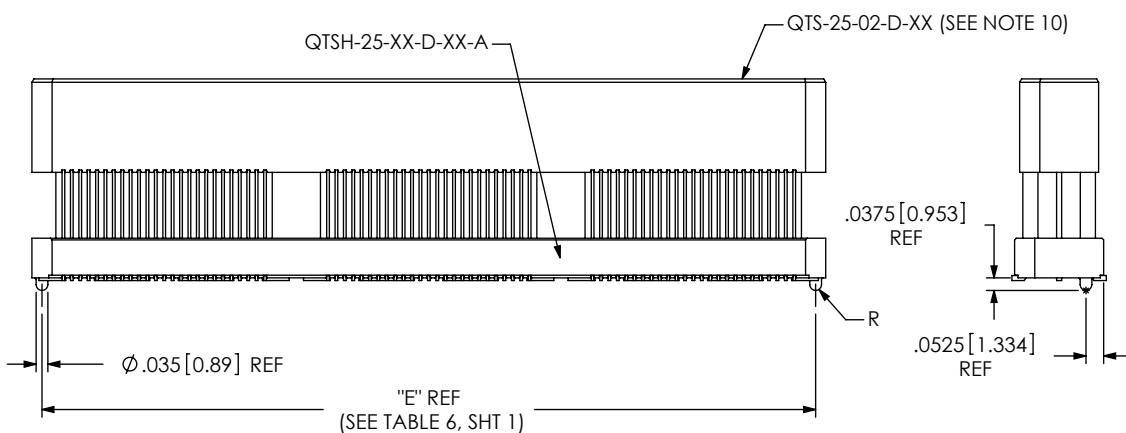
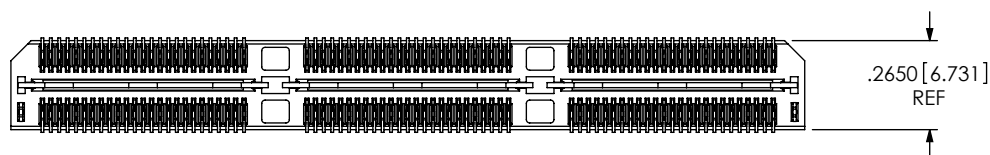
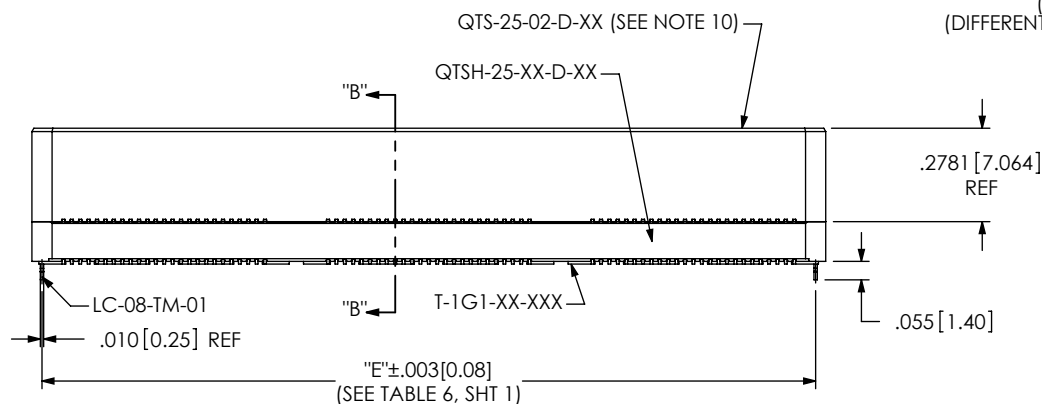
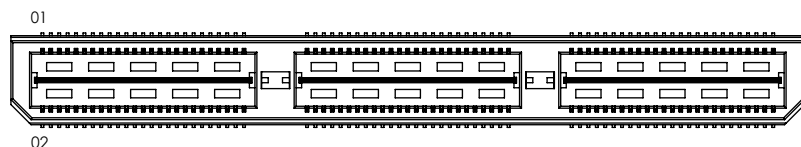
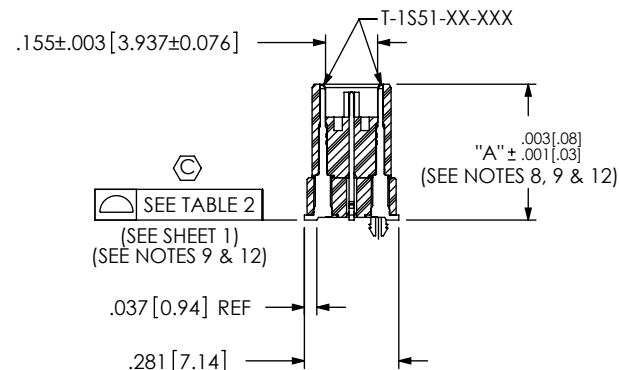


FIG 6  
(QTS-075-04-XXX-D-A SHOWN)  
(DIFFERENT AS SHOWN, OTHERWISE SAME AS FIG 1)  
(STYLE -03, -04, -05 & -06)

TABLE 4					
STYLE	"A"	GROUND PLANE	TERMINAL	BOTTOM SPACER BODY	MATED HEIGHT WITH QSS-01
-03	.4043 [10.269]	T-1G1-03-XXX	T-1S51-03-XXX	QTSH-25-01-D-XX-X	.433 [11.00] REF
-04	.6001 [15.246]	T-1G1-04-XXX	T-1S51-04-XXX	QTSH-25-01-D-XX-X	.630 [16.00] REF
* -05	.7181 [18.240]	T-1G1-05-XXX	T-1S51-05-XXX	QTSH-25-02-D-XX-X	.748 [19.00] REF
* -06	.8361 [21.237]	T-1G1-06-XXX	T-1S51-06-XXX	QTSH-25-02-D-XX-X	.866 [22.00] REF

(\* = NOT TOOLED)

FIG 5  
(QTS-075-03-XXX-D-LC SHOWN)  
(DIFFERENT AS SHOWN, OTHERWISE SAME AS FIG 1)



SECTION "B"-"B"

F:\DWG\MISC\MKTG\QTS-XXX-XX-XXX-D-XXX-MKT.SLDDRW

#### PROPRIETARY NOTE

THIS DOCUMENT CONTAINS INFORMATION CONFIDENTIAL AND PROPRIETARY TO SAMTEC, INC. AND SHALL NOT BE REPRODUCED OR TRANSFERRED TO OTHER DOCUMENTS OR DISCLOSED TO OTHERS OR USED FOR ANY PURPOSE OTHER THAN THAT WHICH IT WAS OBTAINED WITHOUT THE EXPRESSED WRITTEN CONSENT OF SAMTEC, INC.

DO NOT SCALE DRAWING

SHEET SCALE: 1.75:1

**samtec**

520 PARK EAST BLVD, NEW ALBANY, IN 47150  
PHONE: 812-944-6733 FAX: 812-948-5047  
e-Mail: info@SAMTEC.com code: 55322

DESCRIPTION:  
H.635mm DOUBLE ROW HS TERMINAL ASSEMBLY

DWG. NO. QTS-XXX-XX-XXX-D-XXX

BY: DEAN P 09-14-2010 SHEET 3 OF 3