

TABLE 5				
NO OF POS	"L"	"M"	"N"	"P"
-16	1.330[33.78]	1.050[26.67]	.575[14.61]	1.080[27.43]
-32	2.170[55.12]	1.890[48.01]	1.415[35.94]	1.920[48.77]
-48	3.010[76.45]	2.730[69.34]	2.255[57.28]	2.760[70.10]
-64	3.850[97.79]	3.570[90.68]	3.095[78.61]	3.600[91.44]

DO NOT SCALE FROM THIS PRINT

QMS-XXX-XX-XX-D-DP-RA-XX-XXX-XX

- No OF POSITIONS
-016, -032, -048, -064 (PER ROW)
- LEAD STYLE
-01: .062[1.57] BOARD
-02: .093[2.36] BOARD
- PACKAGING OPTION
-TR: TAPE & REEL PACKAGING (-016 & -032 WITH NO OPTIONS) (-016 & -032 WITH -PC4) (-016 WITH -PC8)
- OPTION
-K: KAPTON PAD (USE K-850-650)
-PC4: (NOT AVAILABLE WITH -064 POSITION)(SEE FIG 2, SHT 5)
-PC8: (NOT AVAILABLE WITH -064 POSITION) (SEE FIG 3, SHT 5)
- GUIDE POST
-MG: METAL GUIDE POST (LEAVE BLANK FOR PLASTIC OR PCX.) (PLASTIC AVAILABLE AS ASO ONLY)
- RA: RIGHT ANGLE
- DP: DIFFERENTIAL PAIRS
- ROW SPECIFICATION
-D: DOUBLE (USE QMS-026-01-D-XX-RA)
- PLATING SPECIFICATION (SEE TABLE 6, SHEET 4)
-SL: 10µ" GOLD IN CONTACT AREA, MATTE TIN ON TAIL
-S: 30µ" GOLD IN CONTACT AREA, MATTE TIN ON TAIL
-L: 10µ" GOLD IN CONTACT AREA, 3µ" GOLD ON TAIL
-H: 30µ" GOLD IN CONTACT AREA, 3µ" GOLD ON TAIL

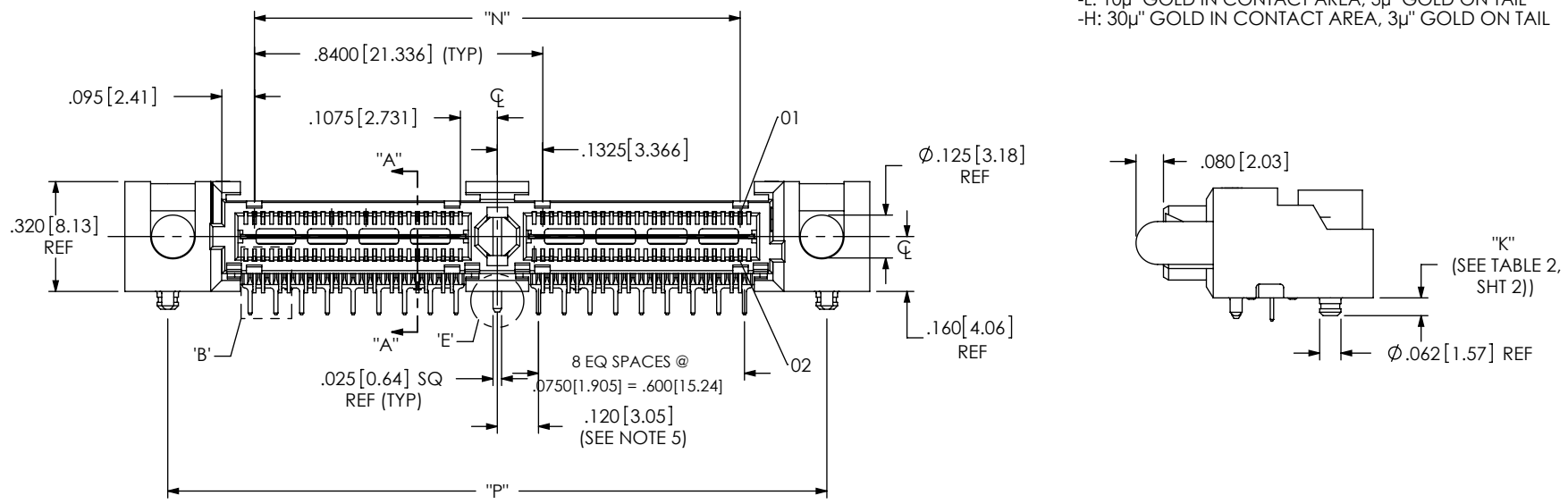
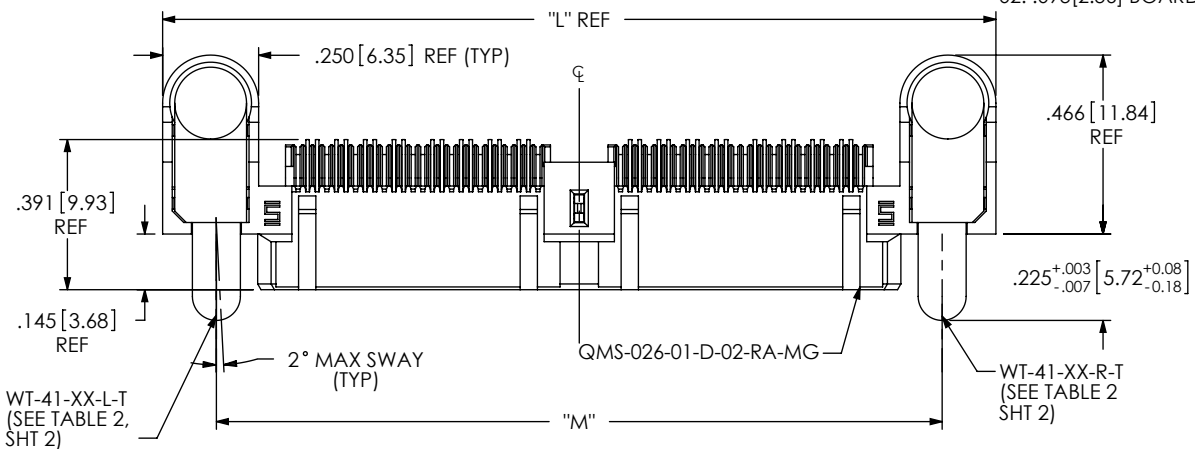
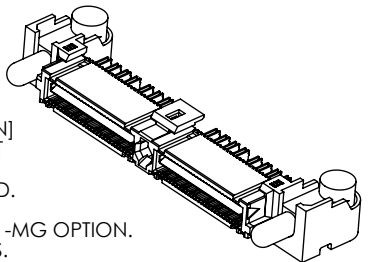


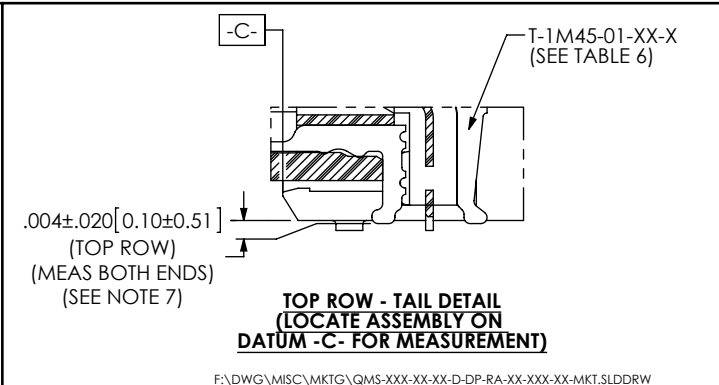
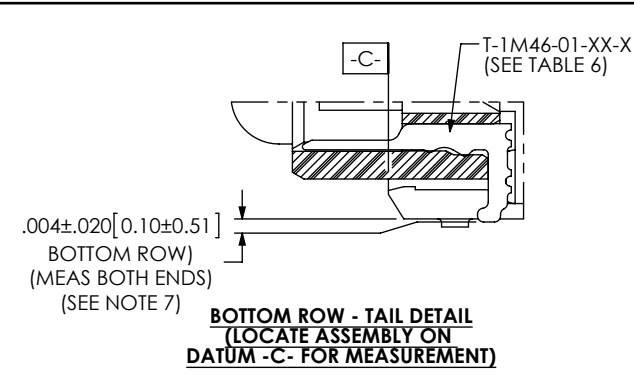
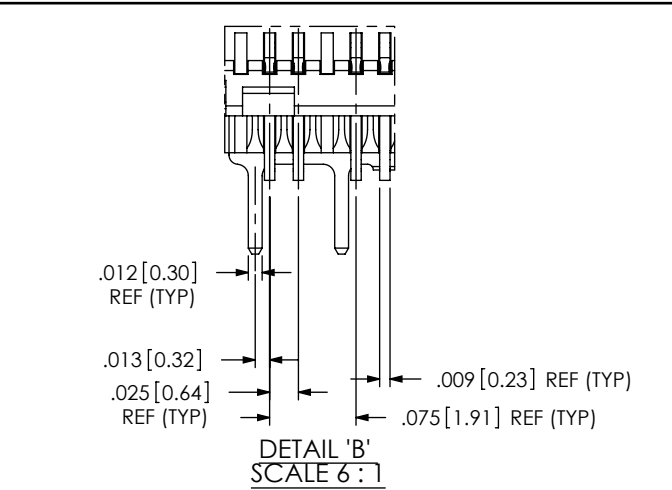
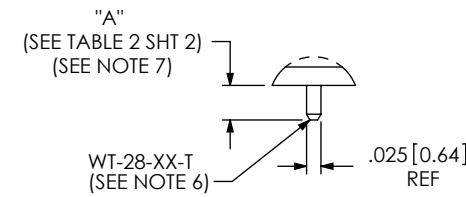
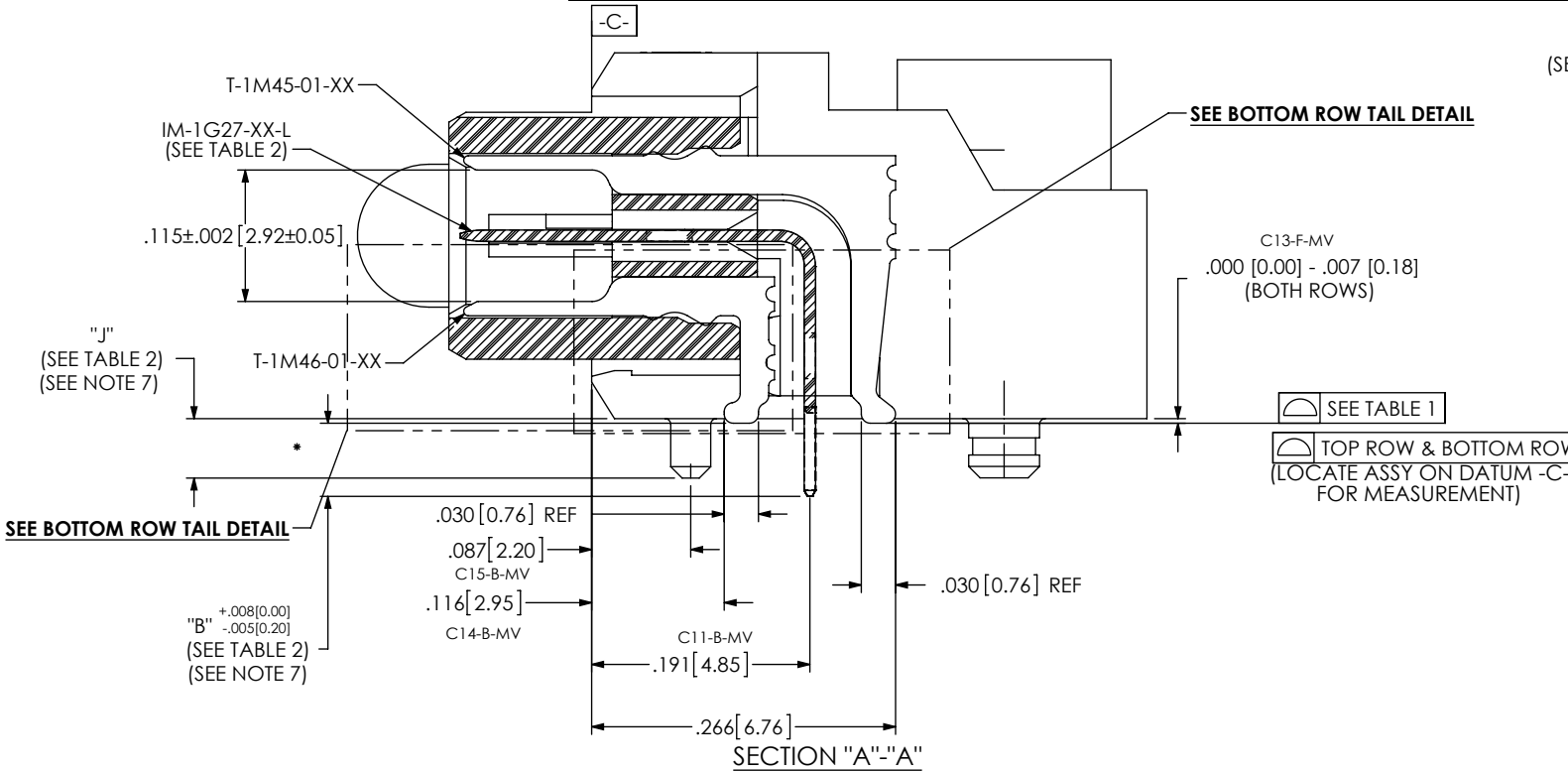
FIG 1 (QMS-032-01-XX-D-DP-RA-MG SHOWN)

- NOTES:
- REPRESENTS A CRITICAL DIMENSION.
 - MAXIMUM BURR ALLOWANCE: .0010 [0.02].
 - MINIMUM PUSHOUT FORCE: SIGNAL: .5 LB, [2.22N] SHIELD/GROUND, POWER PIN, COUNTERWEIGHT AND METAL GUIDE POST: 1 LB, [4.45N]
 - PARTS TO BE PACKAGED IN TRAYS AS STANDARD.
 - DOES NOT APPLY TO 1 BANK.
 - WT-28-XX-T NOT PRESENT ON SINGLE BANK WITH -MG OPTION.
 - USE -Z- DATUM ZONE ONLY FOR MEASUREMENTS.



CPC FREQUENCY THIS SHEET	A	C1, C29, C32	UNLESS OTHERWISE SPECIFIED, DIMENSIONS ARE IN INCHES. TOLERANCES ARE: DECIMALS ANGLES .XX: ±.01 [.3] .XXX: ±.005 [.13] .XXXX: ±.0020 [.051]	PROPRIETARY NOTE THIS DOCUMENT CONTAINS INFORMATION CONFIDENTIAL AND PROPRIETARY TO SAMTEC, INC. AND SHALL NOT BE REPRODUCED OR TRANSFERRED TO OTHER DOCUMENTS OR DISCLOSED TO OTHERS OR USED FOR ANY PURPOSE OTHER THAN THAT WHICH IT WAS OBTAINED WITHOUT THE EXPRESSED WRITTEN CONSENT OF SAMTEC, INC.	 520 PARK EAST BLVD, NEW ALBANY, IN 47150 PHONE: 812-944-6733 FAX: 812-948-5047 e-Mail: info@SAMTEC.com code: 55322
	B	C41, C42			
	C				
	D				
MATERIAL: DO NOT SCALE DRAWING SHEET SCALE: 2:1 INSULATOR: LCP, COLOR BLACK			DESCRIPTION: .635mm RA DIFFERENTIAL PAIRS PLUG ASSEMBLY		
CONTACT, POWER PIN, & GROUND PLANE: PHOS BRONZE COUNTERWEIGHT: BRASS METAL GUIDE POST: ZINC			DWG. NO. QMS-XXX-XX-XX-D-DP-RA-XX-XXX-XX		
F:\DWG\VMKTG\QMS-XXX-XX-XX-D-DP-RA-XX-XXX-XX-MKT.SLDDRW			BY: BRATCHER 01/04/2007 SHEET 1 OF 6		

TABLE 2									
LEAD STYLE	"A"	"B"	"C"	"J"	"K"	WT-28-XX-T	IM-1G27-XX-L	T-1R37-XX-T	WT-41-XX-XX
-01	.060[1.52]	.064[1.63]	.055[1.40]	.052[1.32]	.052[1.32]	WT-28-01-T	IM-1G27-01-L	T-1R37-01-T	WT-41-01-XX
-02	.091[2.31]	.095[2.41]	.086[2.18]	.083[2.11]	.083[2.11]	WT-28-02-T	IM-1G27-02-L	T-1R37-02-T	WT-41-02-XX



F:\DWG\MISC\MKTG\QMS-XXX-XX-XX-D-DP-RA-XX-XXX-XX-MKT.SLDDRW

TABLE 1			
No OF POSITIONS	COPLANARITY	STRAIGHTNESS ROW 1	STRAIGHTNESS ROW 2
-016 THRU -032	.004[.10]	.004[.10]	.004[.10]
-048 THRU -064	.006[.15]	.006[.15]	.006[.15]

CPC FREQUENCY THIS SHEET	
A	C7, C8, C9, C28
B	
C	
D	

PROPRIETARY NOTE
THIS DOCUMENT CONTAINS INFORMATION CONFIDENTIAL AND PROPRIETARY TO SAMTEC, INC. AND SHALL NOT BE REPRODUCED OR TRANSFERRED TO OTHER DOCUMENTS OR DISCLOSED TO OTHERS OR USED FOR ANY PURPOSE OTHER THAN THAT WHICH IT WAS OBTAINED WITHOUT THE EXPRESSED WRITTEN CONSENT OF SAMTEC, INC.

DO NOT SCALE DRAWING

SHEET SCALE: 1:0.166667

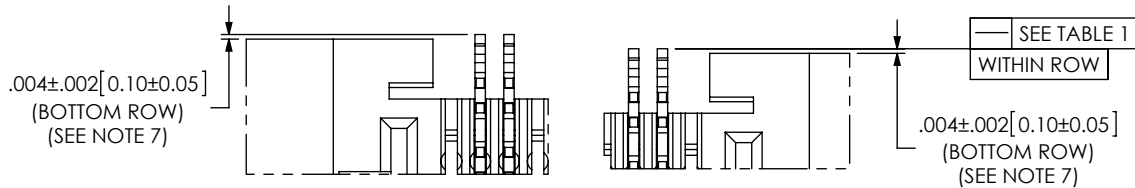
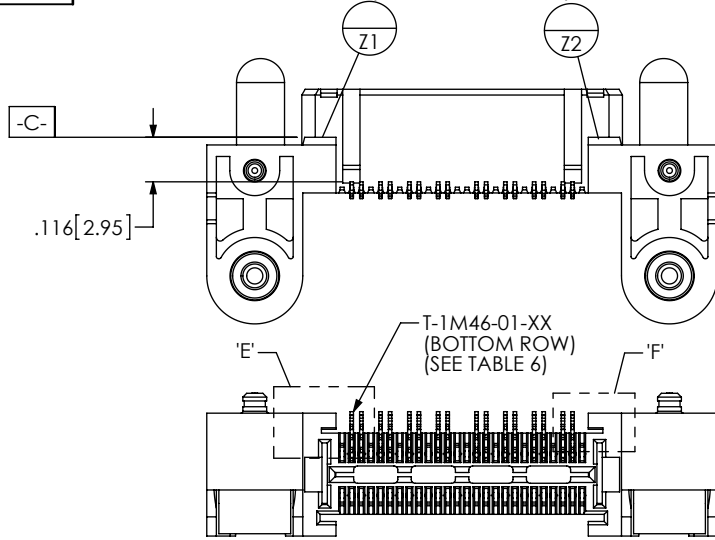
520 PARK EAST BLVD, NEW ALBANY, IN 47150
PHONE: 812-944-6733 FAX: 812-948-5047
e-Mail: info@SAMTEC.com code: 55322

DESCRIPTION:
.635mm RA DIFFERENTIAL PAIRS PLUG ASSEMBLY

DWG. NO.
QMS-XXX-XX-XX-D-DP-RA-XX-XXX-XX

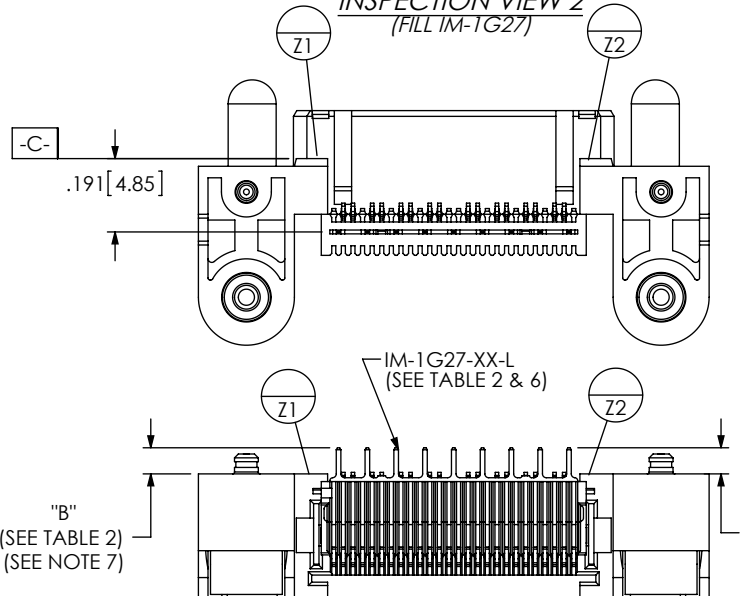
BY: BRATCHER 01/04/2007 SHEET 2 OF 6

INSPECTION VIEW 1
(FILL BOTTOM ROW)



DETAIL 'E'
SCALE 6 : 1

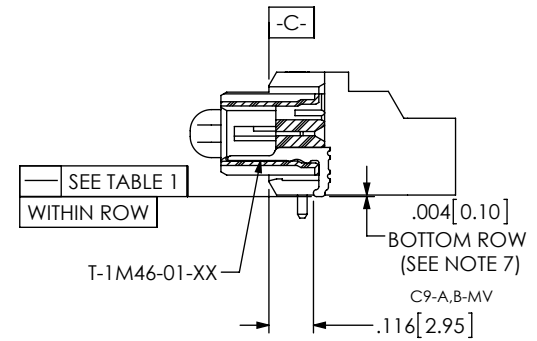
INSPECTION VIEW 2
(FILL IM-TG27)



"B"
(SEE TABLE 2)
(SEE NOTE 7)

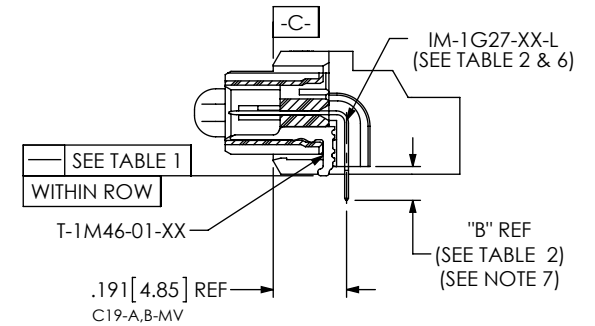
.068 [1.73]
(SEE TABLE 2)
(SEE NOTE 7)

F:\DWG\MISC\MKTG\QMS-XXX-XX-XX-D-DP-RA-XX-XXX-XX-MKT.SLDDRW



IN-PROCESS 1
(FILL BOTTOM ROW)
(SEE INSPECTION VIEW 1 FOR ORIENTATION AND CPC'S)

DETAIL 'F'
SCALE 6 : 1




IN-PROCESS 2
(FILL IM-TG27)
(SEE INSPECTION VIEW 2 FOR ORIENTATION AND CPC'S)

CPC FREQUENCY THIS SHEET	
A	C9, C19
B	C9, C19, C21, C32, C34, C35, C36
C	
D	

PROPRIETARY NOTE
THIS DOCUMENT CONTAINS INFORMATION CONFIDENTIAL AND PROPRIETARY TO SAMTEC, INC. AND SHALL NOT BE REPRODUCED OR TRANSFERRED TO OTHER DOCUMENTS OR DISCLOSED TO OTHERS OR USED FOR ANY PURPOSE OTHER THAN THAT WHICH IT WAS OBTAINED WITHOUT THE EXPRESSED WRITTEN CONSENT OF SAMTEC, INC.

DO NOT SCALE DRAWING

SHEET SCALE: 2:1



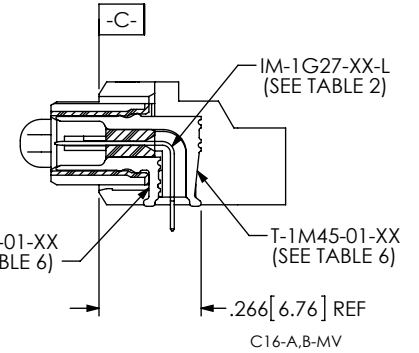
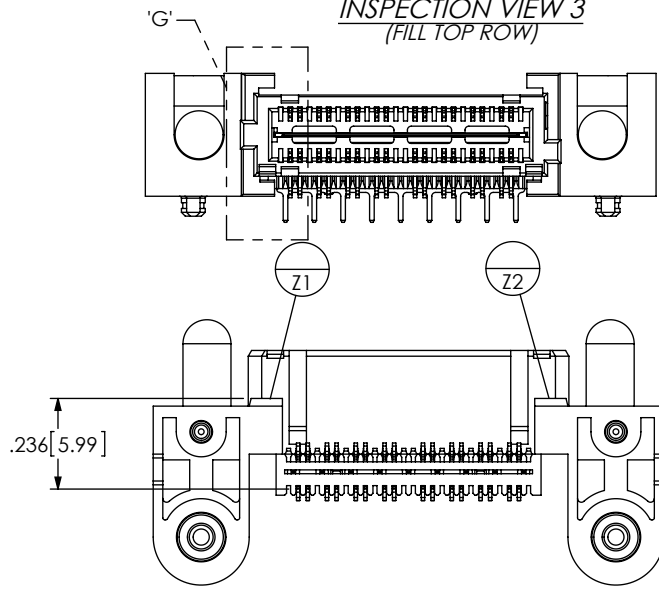
520 PARK EAST BLVD, NEW ALBANY, IN 47150
PHONE: 812-944-6733 FAX: 812-948-5047
e-Mail: info@SAMTEC.com code: 55322

DESCRIPTION:
.635mm RA DIFFERENTIAL PAIRS PLUG ASSEMBLY

DWG. NO.
QMS-XXX-XX-XX-D-DP-RA-XX-XXX-XX

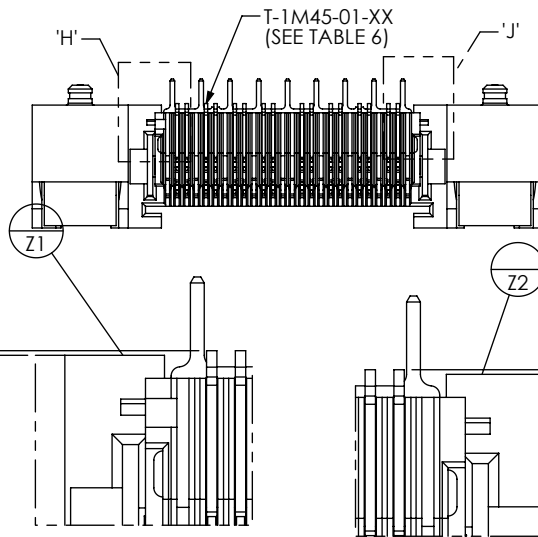
BY: BRATCHER 01/04/2007 SHEET 3 OF 6

INSPECTION VIEW 3
(FILL TOP ROW)



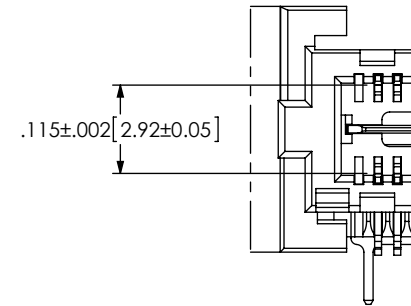
IN-PROCESS 3
(FILL TOP ROW)

(SEE INSPECTION VIEW 3 FOR ORIENTATION AND CPC'S)



DETAIL 'H'
SCALE 6 : 1

DETAIL 'J'
SCALE 6 : 1



DETAIL 'G'
SCALE 4 : 1

TABLE 6: PLATING SPECIFICATIONS

	CONTACT	CONTACT	GROUND PLANE	PCX CONTACTS
-SL	T-1M45-01-SL: 10µ" GOLD CONTACT, MATTE TIN TAIL	T-1M46-01-SL: 10µ" GOLD CONTACT, MATTE TIN TAIL	IM-1G27-XX-L: 10µ" GOLD CONTACT, MATTE TIN TAIL	T-1S69-XX-SL: 10µ" GOLD CONTACT, MATTE TIN TAIL
-S	T-1M45-01-S: 30µ" GOLD CONTACT, MATTE TIN TAIL	T-1M46-01-S: 30µ" GOLD CONTACT, MATTE TIN TAIL	IM-1G27-XX-L: 10µ" GOLD CONTACT, MATTE TIN TAIL	T-1S69-XX-S: 30µ" GOLD CONTACT, MATTE TIN TAIL
-L	T-1M45-01-L: 10µ" GOLD CONTACT, 3µ" GOLD TAIL	T-1M46-01-L: 10µ" GOLD CONTACT, 3µ" GOLD TAIL	IM-1G27-XX-L: 10µ" GOLD CONTACT, MATTE TIN TAIL	T-1S69-XX-SL: 10µ" GOLD CONTACT, MATTE TIN TAIL
-H	T-1M45-01-H: 30µ" GOLD CONTACT, 3µ" GOLD TAIL	T-1M46-01-H: 30µ" GOLD CONTACT, 3µ" GOLD TAIL	IM-1G27-XX-L: 10µ" GOLD CONTACT, MATTE TIN TAIL	T-1S69-XX-S: 30µ" GOLD CONTACT, MATTE TIN TAIL

CPC FREQUENCY THIS SHEET

A	C16
B	C16, C38, C39, C40
C	
D	

PROPRIETARY NOTE
THIS DOCUMENT CONTAINS INFORMATION CONFIDENTIAL AND PROPRIETARY TO SAMTEC, INC. AND SHALL NOT BE REPRODUCED OR TRANSFERRED TO OTHER DOCUMENTS OR DISCLOSED TO OTHERS OR USED FOR ANY PURPOSE OTHER THAN THAT WHICH IT WAS OBTAINED WITHOUT THE EXPRESSED WRITTEN CONSENT OF SAMTEC, INC.

DO NOT SCALE DRAWING

SHEET SCALE: 2:1

F:\DWG\MISC\MKTG\QMS-XXX-XX-XX-D-DP-RA-XX-XXX-XX-MKT.SLDDRW



520 PARK EAST BLVD, NEW ALBANY, IN 47150
PHONE: 812-944-6733 FAX: 812-948-5047
e-Mail: info@SAMTEC.com code: 55322

DESCRIPTION:
.635mm RA DIFFERENTIAL PAIRS PLUG ASSEMBLY

DWG. NO.
QMS-XXX-XX-XX-D-DP-RA-XX-XXX-XX

BY: BRATCHER 01/04/2007 SHEET 4 OF 6

FIG 2
(QMS-032-01-XX-D-DP-RA-PC4 SHOWN)
(SAME AS FIG 1, DIFFERENT AS SHOWN)

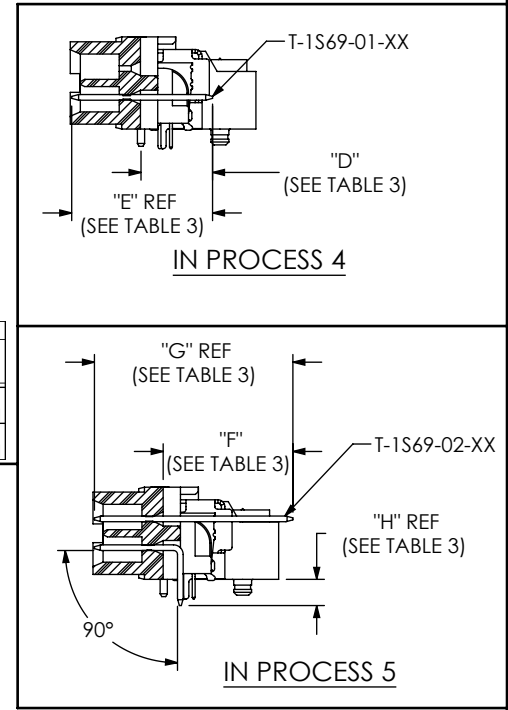
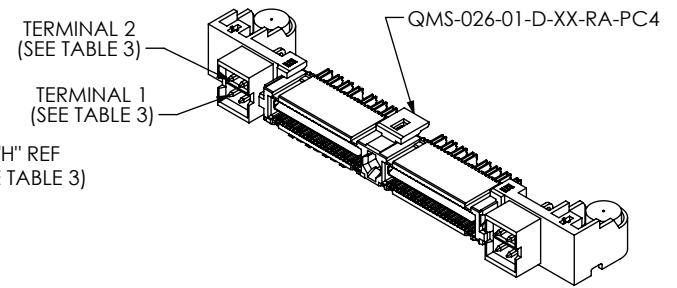
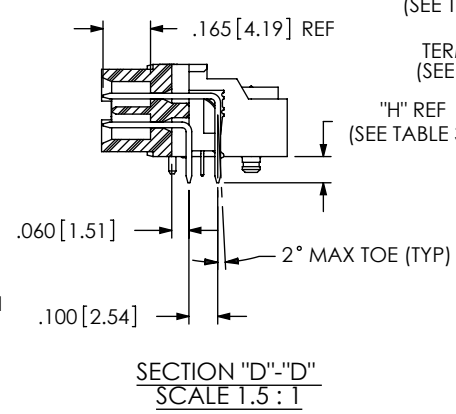
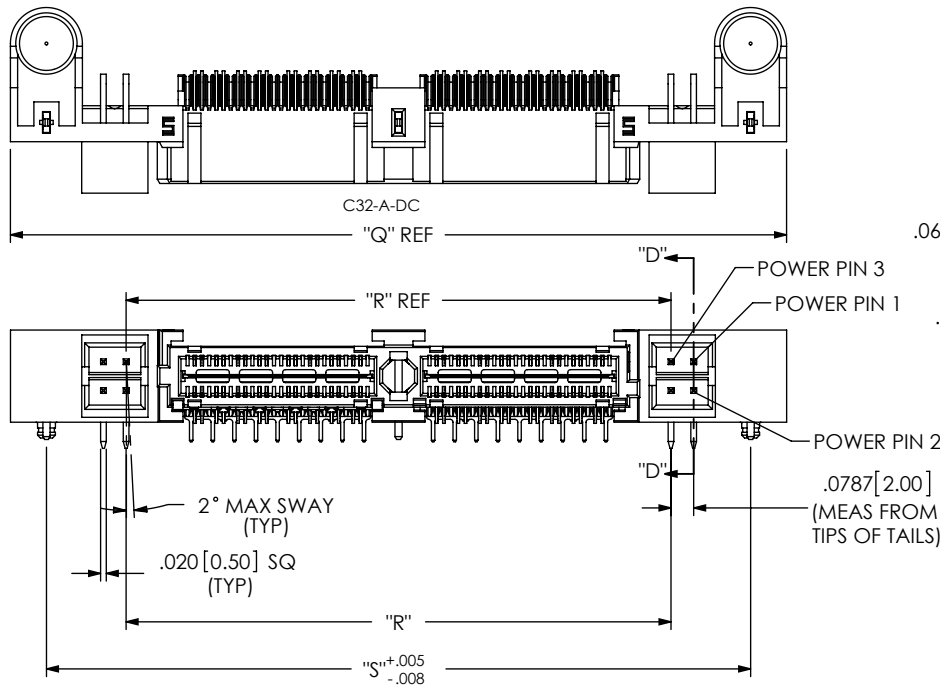


TABLE 3

LEAD STYLE	TERMINAL 1	TERMINAL 2	"D"	"E"	"F"	"G"	"H"
-01	T-1S69-01-XX	T-1S69-02-XX	.248 [6.30]	.489 [12.42]	.450 [11.43]	.689 [17.50]	.091 [2.31]
-02	T-1S69-03-XX	T-1S69-04-XX	.279 [7.09]	.520 [13.21]	.481 [12.22]	.720 [18.29]	.122 [3.10]

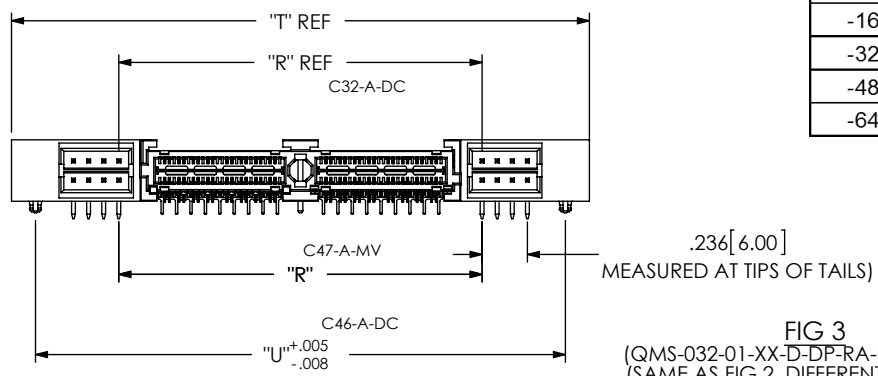
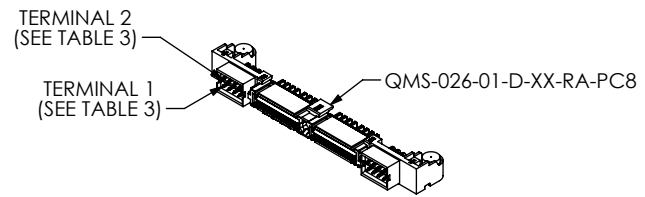
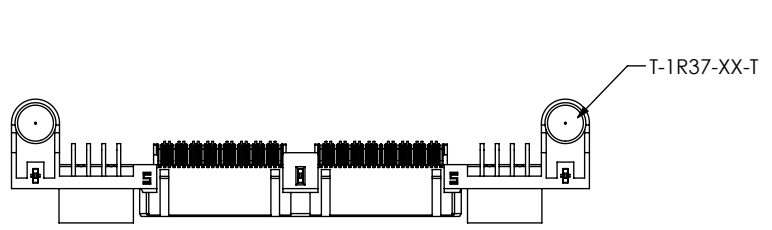


FIG 3
(QMS-032-01-XX-D-DP-RA-PC8 SHOWN)
(SAME AS FIG 2, DIFFERENT AS SHOWN)

TABLE 7

POSITION	"Q"	"R"	"S"	"T"	"U"	"V"	"W"
-16	1.855 [47.12]	1.052 [26.72]	1.605 [40.77]	2.170 [55.12]	1.920 [48.77]	1.050 [26.67]	1.080 [27.43]
-32	2.695 [68.45]	1.892 [48.06]	2.445 [62.10]	3.010 [76.45]	2.760 [70.10]	1.890 [48.01]	1.920 [48.77]
-48	3.535 [89.79]	2.732 [69.39]	3.285 [83.44]	3.850 [97.79]	3.600 [91.44]	2.730 [69.34]	2.760 [70.10]
-64	4.375 [111.13]	3.572 [90.73]	4.125 [104.78]	4.690 [119.13]	4.440 [112.78]	3.570 [90.68]	3.600 [91.44]

CPC FREQUENCY THIS SHEET	
A	C17, C32, C45, C46, C47
B	C23, C25, C43, C44
C	
D	

PROPRIETARY NOTE
THIS DOCUMENT CONTAINS INFORMATION CONFIDENTIAL AND PROPRIETARY TO SAMTEC, INC. AND SHALL NOT BE REPRODUCED OR TRANSFERRED TO OTHER DOCUMENTS OR DISCLOSED TO OTHERS OR USED FOR ANY PURPOSE OTHER THAN THAT WHICH IT WAS OBTAINED WITHOUT THE EXPRESSED WRITTEN CONSENT OF SAMTEC, INC.

DO NOT SCALE DRAWING
SHEET SCALE: 2:1

samtec
520 PARK EAST BLVD, NEW ALBANY, IN 47150
PHONE: 812-944-6733 FAX: 812-948-5047
e-Mail: info@SAMTEC.com code: 55322

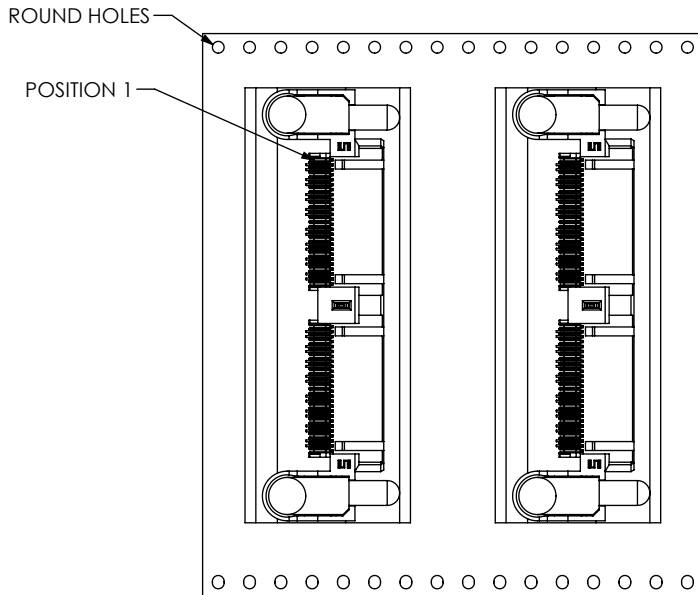
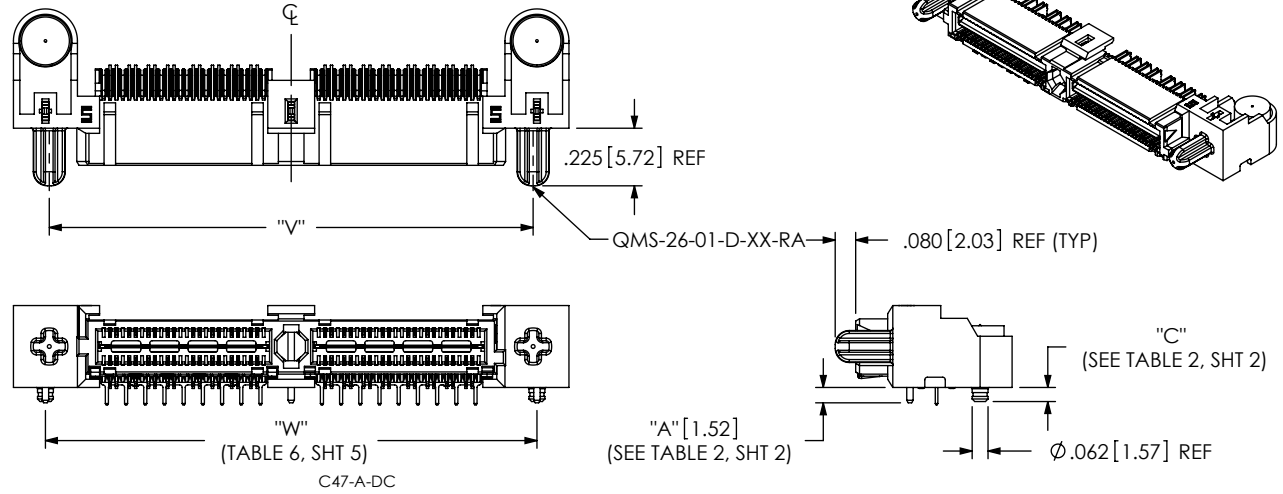
DESCRIPTION:
.635mm RA DIFFERENTIAL PAIRS PLUG ASSEMBLY
DWG. NO.
QMS-XXX-XX-XX-D-DP-RA-XX-XXX-XX
BY: BRATCHER 01/04/2007 SHEET 5 OF 6

REVISION T

CRITICAL DIMENSION INSPECTION TABLE

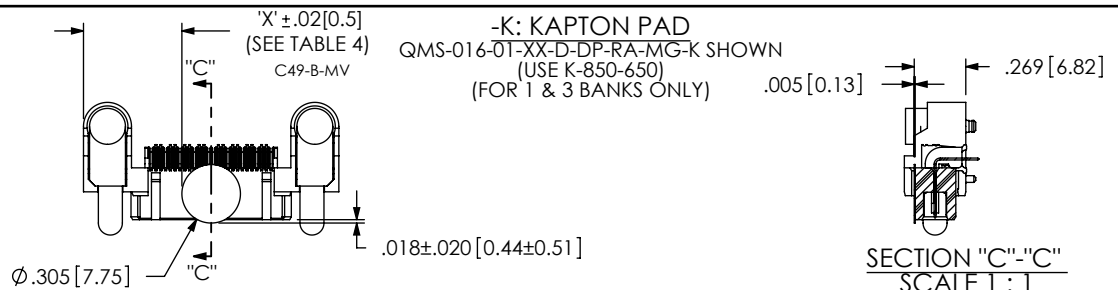
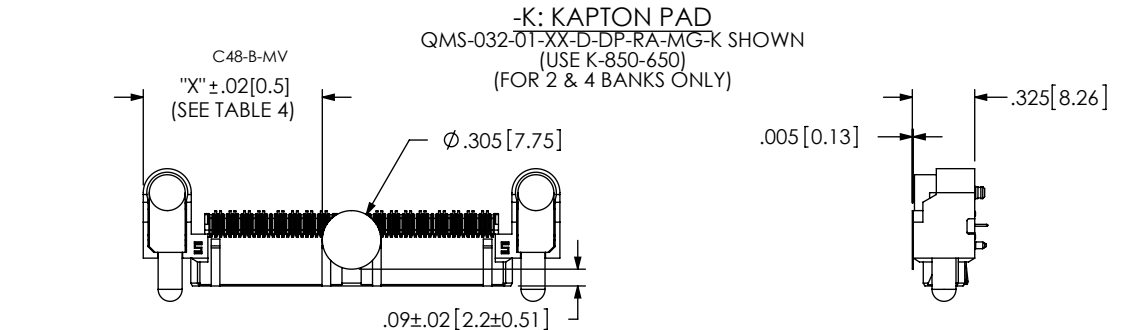
LEAD STYLE	ASSEMBLY OPERATION	IN-PROCESS
-01, -02	FILL T-1M46	C9, C32, C50
-01, -02	FILL IM-1G27	C8, C9, C10, C19, C32
-01, -02	FILL T-1M45	C8, C9, C16, C19, C32
-01, -02	FILL WT-28	C8, C7, C9, C19, C16, C32
-01, -02	FILL WT-41	C1, C8, C9, C19, C16, C7, C28, C32, C43, C44, C45, C46, C47
-01, -02	-PC4	C10, C20, C21, C23, C25, C32
-01, -02	-PC8	C10, C22, C23, C21, C25, C32
-01, -02	T-1R37	C12
-01, -02	-K	C31, C32, C48, C49

FIG4
(QMS-032-01-XX-D-DP-RA SHOWN)
(SAME AS FIG1, DIFFERENT AS SHOWN)
AVAILABLE AS ASO ONLY



USER DIRECTION OF UN-REELING →
POCKET NOT DETAILED

PACKAGING VIEW
-TR: TAPE & REEL OPTION
(QMS-032-01-XX-D-DP-RA-MG-TR SHOWN)



F:\DWG\MISC\MKTG\QMS-XXX-XX-XX-D-DP-RA-XX-XXX-XX-MKT.SLDDRW

POS.	"X"		
	STANDARD & -MG	-PC4	-PC8
-016	0.513 [13.03]	0.776 [19.71]	0.934 [23.71]
-032	0.933 [23.70]	1.196 [30.38]	1.354 [34.38]
-048	1.353 [34.37]	1.616 [41.05]	1.774 [45.05]
-064	1.773 [45.03]	2.036 [51.71]	2.194 [55.71]

CPC FREQUENCY THIS SHEET	
A	C7, C47
B	C12
C	
D	

PROPRIETARY NOTE
THIS DOCUMENT CONTAINS INFORMATION CONFIDENTIAL AND PROPRIETARY TO SAMTEC, INC. AND SHALL NOT BE REPRODUCED OR TRANSFERRED TO OTHER DOCUMENTS OR DISCLOSED TO OTHERS OR USED FOR ANY PURPOSE OTHER THAN THAT WHICH IT WAS OBTAINED WITHOUT THE EXPRESSED WRITTEN CONSENT OF SAMTEC, INC.

DO NOT SCALE DRAWING
SHEET SCALE: 2:1



520 PARK EAST BLVD, NEW ALBANY, IN 47150
PHONE: 812-944-6733 FAX: 812-948-5047
e-Mail: info@SAMTEC.com code: 55322

DESCRIPTION:
.635mm RA DIFFERENTIAL PAIRS PLUG ASSEMBLY

DWG. NO.
QMS-XXX-XX-XX-D-DP-RA-XX-XXX-XX

BY: BRATCHER 01/04/2007 SHEET 6 OF 6