

ALL DIMENSIONS ARE REFERENCE
(SEE T-M82-XXXX-XX FOR CONTROLLING PRINT)

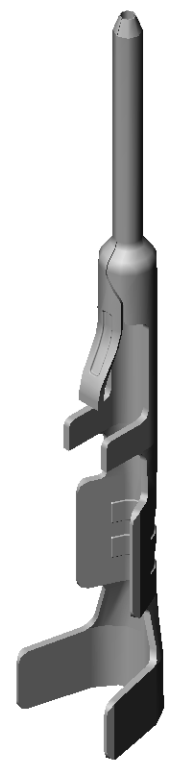
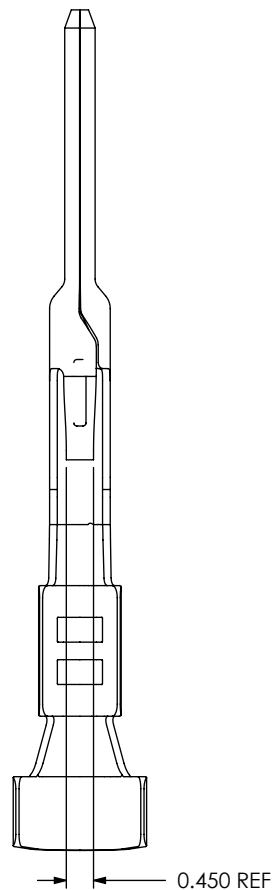
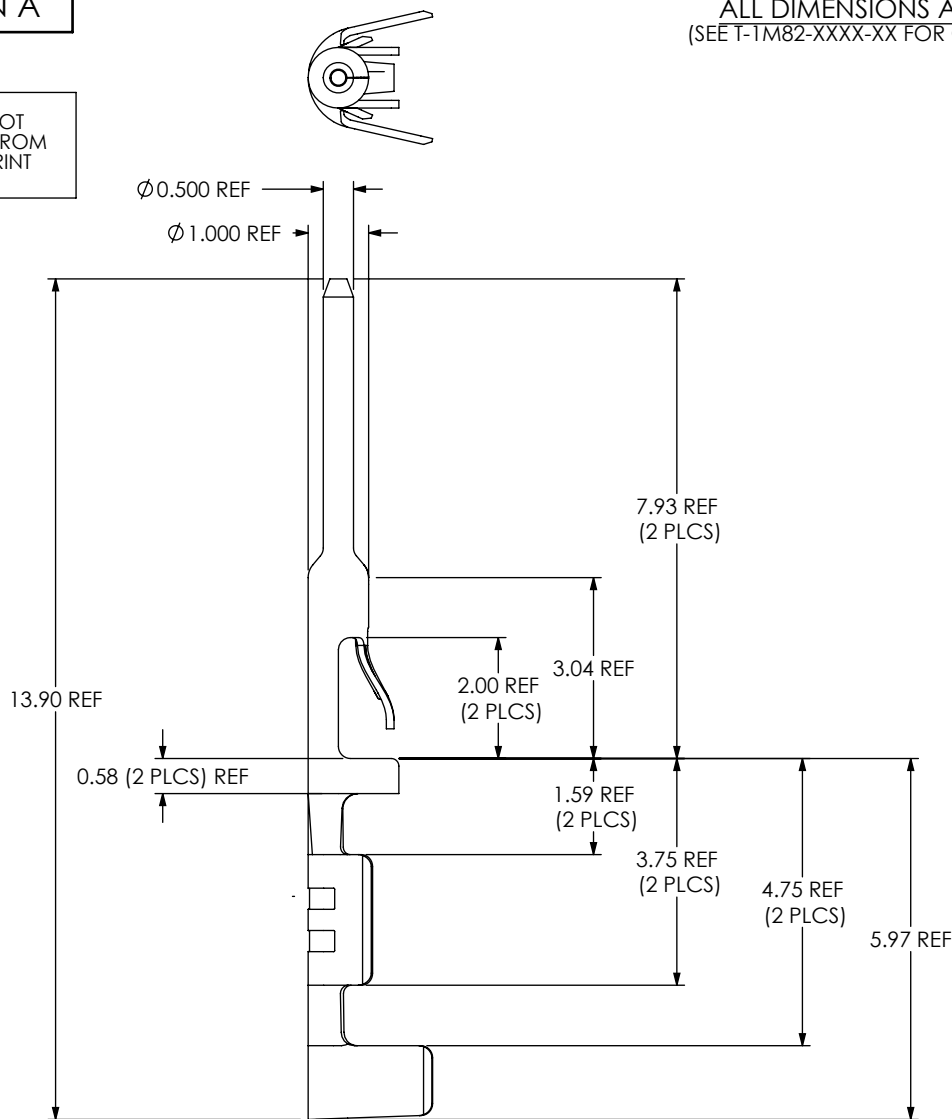
T1M82-X-XXXX-01-XX

SUPPLIED
-L: LOOSE
-R: REEL

PLATING SPECIFICATION
-L: LIGHT SELECTIVE
-S: SELECTIVE
-F: FLASH SELECTIVE

LEAD STYLE
-2426: 24-26 AWG
-2830: 28-30 AWG

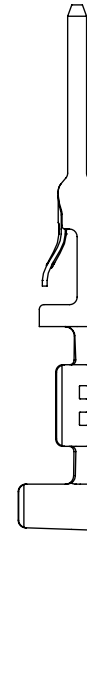
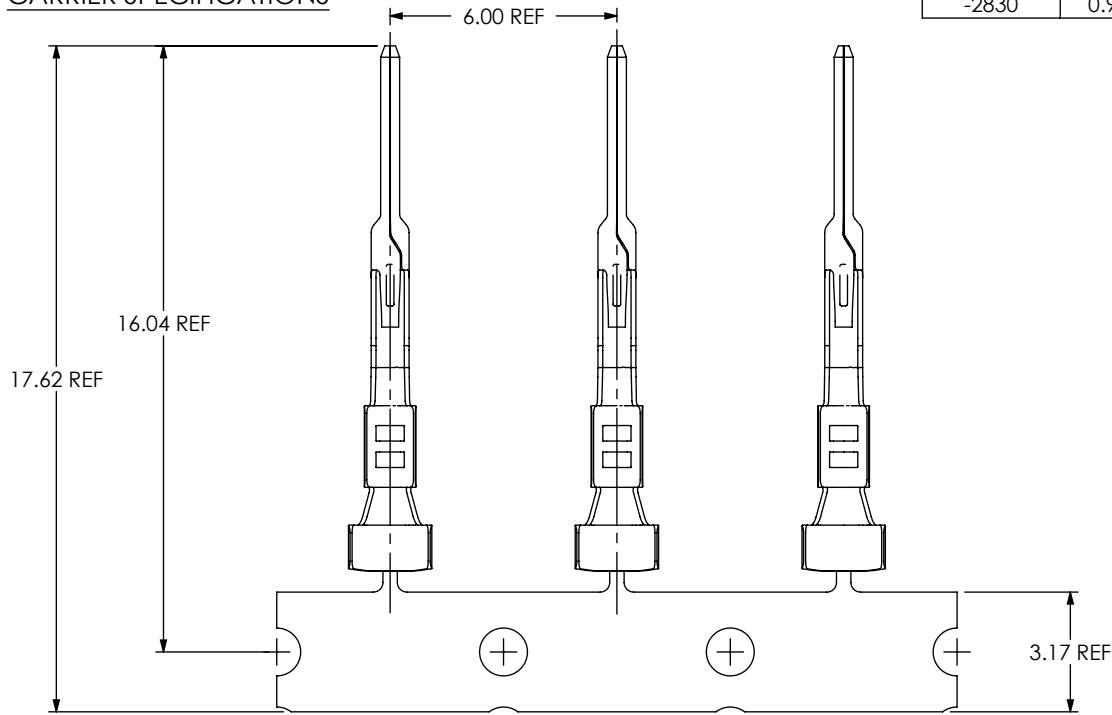
DO NOT
SCALE FROM
THIS PRINT



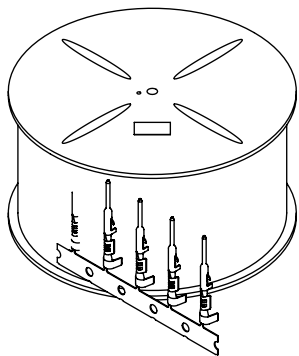
| | | |
|---|--|---|
| <p>UNLESS OTHERWISE SPECIFIED, DIMENSIONS ARE IN MILLIMETERS.</p> | <p>PROPRIETARY NOTE THIS DOCUMENT CONTAINS INFORMATION CONFIDENTIAL AND PROPRIETARY TO SAMTEC, INC. AND SHALL NOT BE REPRODUCED OR TRANSFERRED TO OTHER DOCUMENTS OR DISCLOSED TO OTHERS OR USED FOR ANY PURPOSE OTHER THAN THAT WHICH IT WAS OBTAINED WITHOUT THE EXPRESSED WRITTEN CONSENT OF SAMTEC, INC.</p> | <p>samtec 520 PARK EAST BLVD, NEW ALBANY, IN 47150 PHONE: 812-944-6733 FAX: 812-948-5047 e-Mail: info@SAMTEC.com code: 55322</p> |
| <p>DO NOT SCALE DRAWING</p> | <p>SHEET SCALE: 8:1</p> | <p>DESCRIPTION: 2mm C.L. DISCRETE WIRE TERMINAL DWG. NO. T1M82-X-XXXX-01-XX</p> |
| <p>F:\DWG\MISC\MKTG\T1M82-X-XXXX-01-XX-MKT.SLDDRW</p> | | <p>BY: J. BORGELT 08-09-2010 SHEET 1 OF 2</p> |

| TABLE 1 | | | | | | |
|------------|------|------|------|------|------|------|
| LEAD STYLE | "A" | "B" | "C" | "D" | "E" | "F" |
| -2426 | 1.36 | 1.04 | 2.21 | 2.06 | 2.54 | 4.92 |
| -2830 | 0.96 | 0.87 | 1.37 | 1.45 | 1.98 | 3.28 |

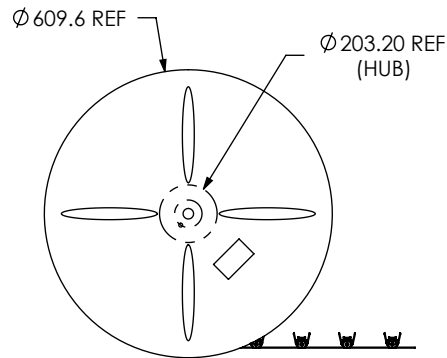
CARRIER SPECIFICATIONS



REEL SPECIFICATIONS



UNWINDING DIRECTION



PROPRIETARY NOTE
 THIS DOCUMENT CONTAINS INFORMATION CONFIDENTIAL AND PROPRIETARY TO SAMTEC, INC. AND SHALL NOT BE REPRODUCED OR TRANSFERRED TO OTHER DOCUMENTS OR DISCLOSED TO OTHERS OR USED FOR ANY PURPOSE OTHER THAN THAT WHICH IT WAS OBTAINED WITHOUT THE EXPRESSED WRITTEN CONSENT OF SAMTEC, INC.

DO NOT SCALE DRAWING

SHEET SCALE: 8:1



520 PARK EAST BLVD, NEW ALBANY, IN 47150
 PHONE: 812-944-6733 FAX: 812-948-5047
 e-Mail: info@SAMTEC.com code: 55322

DESCRIPTION: 2mm C.L. DISCRETE WIRE TERMINAL

DWG. NO. T1M82-X-XXXX-01-XX

BY: J. BORGELT 08-09-2010 SHEET 2 OF 2