


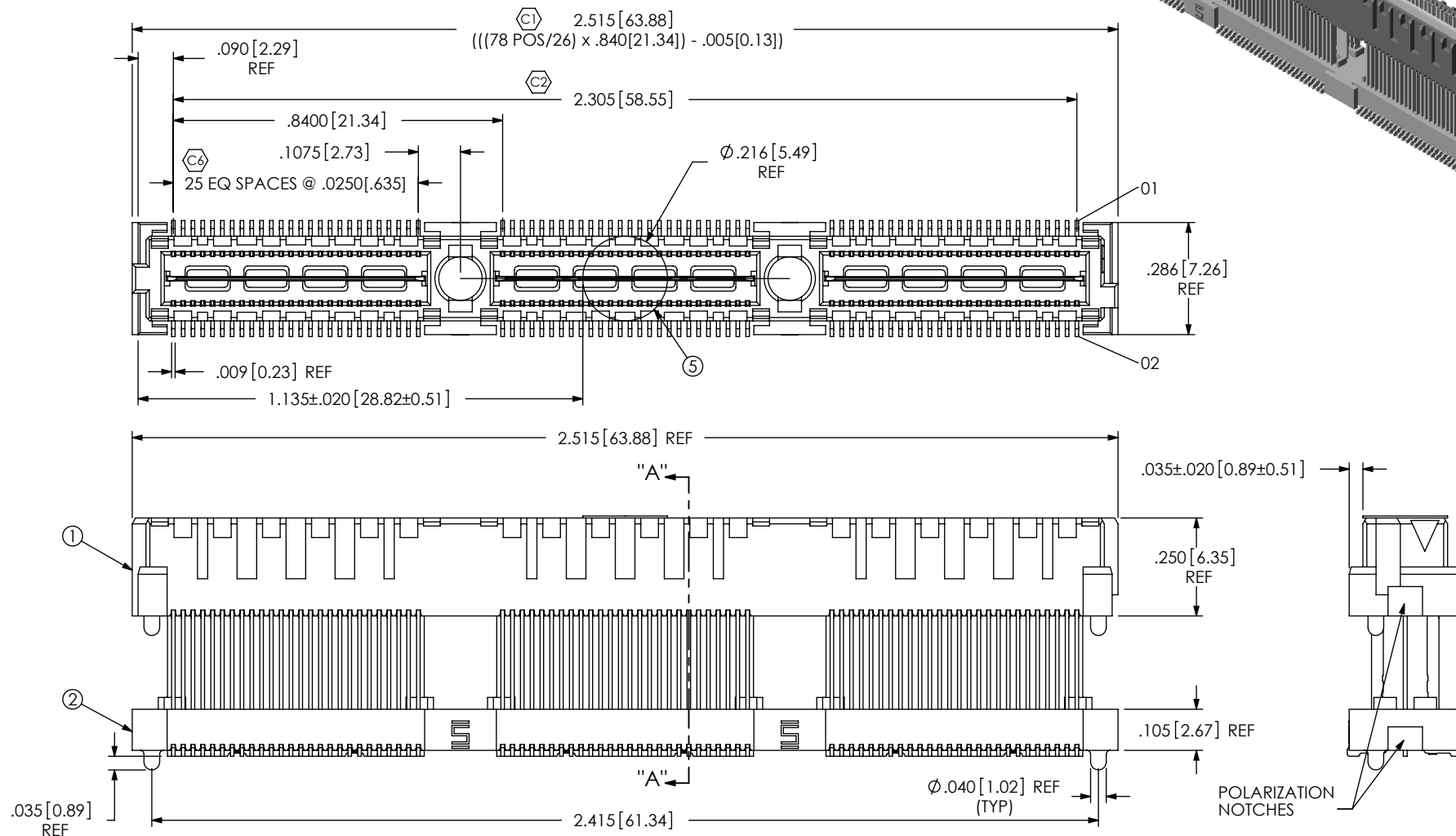
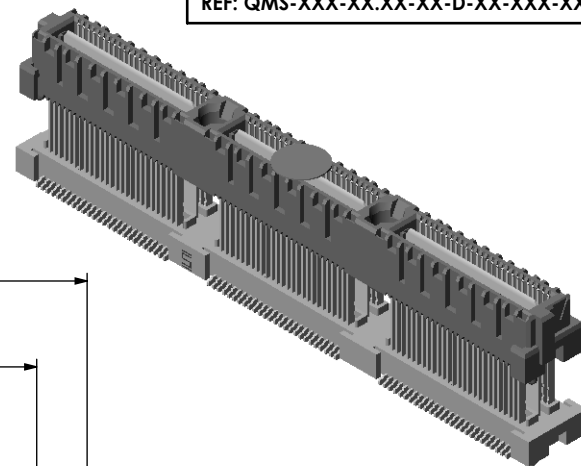
REVISION B

DO NOT
SCALE FROM
THIS PRINT

REF: QMS-XXX-XX.XX-XX-D-XX-XXX-XX

NOTES:

1. **.608 STACKER HEIGHT NOT AVAILABLE AS STANDARD.**
2.  REPRESENTS A CRITICAL DIMENSION.
3. BURR ALLOWANCE: .0015[0.038] MAX.
4. MINIMUM PUSHOUT FORCE: SIGNAL: .5 LB, GROUND: 1 LB.
5. MAX VARIANCE OF .002[0.05].
6. DIMENSION APPLIES TO CONTACTS & GROUND PLANES.
7. GROUND PLANE PRESS HEIGHT MUST BE .003[0.08] LESS THAN THE MAX HEIGHT OR .001[0.03] GREATER THAN THE MINIMUM HEIGHT OF THE TERMINAL.
8. PARTS TO BE PACKAGED IN TAPE & REEL.
9. FOR QUANTITIES UP TO 49 PIECES, NO LEADER, TRAILER, OR EIA-481-D REEL WILL BE SUPPLIED. FOR QUANTITIES OF 50-100 PIECES, NO LEADER, TRAILER WILL BE SUPPLIED.



ITEM NO.	PART NUMBER	QUANTITY	MATERIAL
1	QMSS-26-06.75-D-03-A	1.0000	VECTRA E130i, COLOR: BLACK
2	QTSH-26-01-D-03-A	1.0000	VECTRA E130i, COLOR: BLACK
3	T-1M72-15.75-S	156.0000	PHOS BRONZE, 521 EXTRA SPRING TEMPER
4	T-1G19-15.75-L	3.0000	PHOS BRONZE, 510 FULL HARD TEMPER
5	K-500-300	1.0000	POLYAMIDE FILM
6	CT-ASP2675MS	1.0000	ANTI-STATIC BLACK HIPS

UNLESS OTHERWISE SPECIFIED,
DIMENSIONS ARE IN INCHES.
TOLERANCES ARE:

DECIMALS

.XX: $\pm .01$ [.3]
.XXX: $\pm .005$ [.13]
.XXXX: $\pm .0020$ [.051]

PROPRIETARY NOTE

THIS DOCUMENT CONTAINS INFORMATION
CONFIDENTIAL AND PROPRIETARY TO
SAMTEC, INC. AND SHALL NOT BE REPRODUCED
OR TRANSFERRED TO OTHER DOCUMENTS OR
DISCLOSED TO OTHERS OR USED FOR ANY
PURPOSE OTHER THAN THAT WHICH IT WAS
OBTAINED WITHOUT THE EXPRESSED WRITTEN
CONSENT OF SAMTEC, INC.

PLATING:
CONTACT AREA: .000030 GOLD OVER .000050 NICKEL
REMAINDER: .000200 REF TIN OVER .000050 NICKEL

DO NOT SCALE DRAWING SHEET SCALE: 1:0.4

c:\enterprisevault\DWG\MISC\MKTG\ASP-142781-03-MKT.SLDDRW



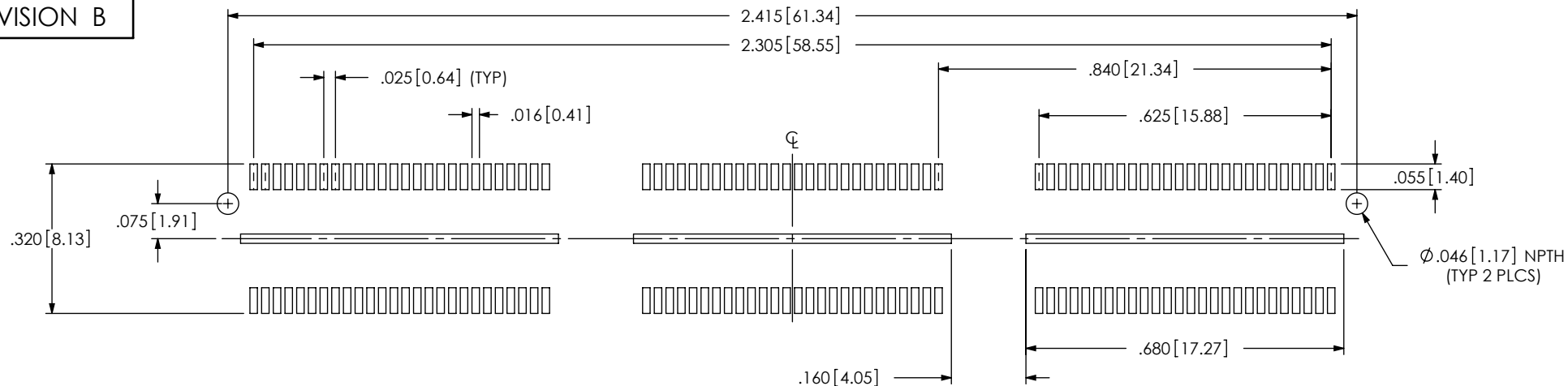
520 PARK EAST BLVD, NEW ALBANY, IN 47150
PHONE: 812-944-6733 FAX: 812-948-5047
e-Mail: info@SAMTEC.com code: 55322

DESCRIPTION:	ELEVATED QMS ASSM (22MM STACK)
--------------	--------------------------------

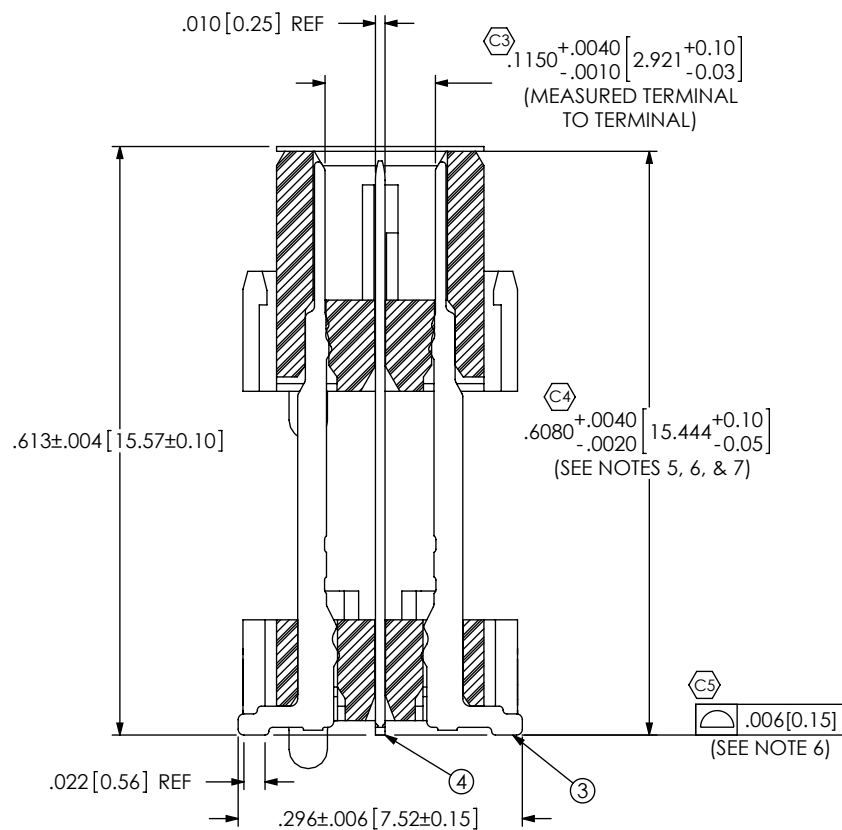
DWG. NO. ASP-142781-03

BY: C. RYAN	10/17/2008	SHEET 1 OF 3
-------------	------------	--------------

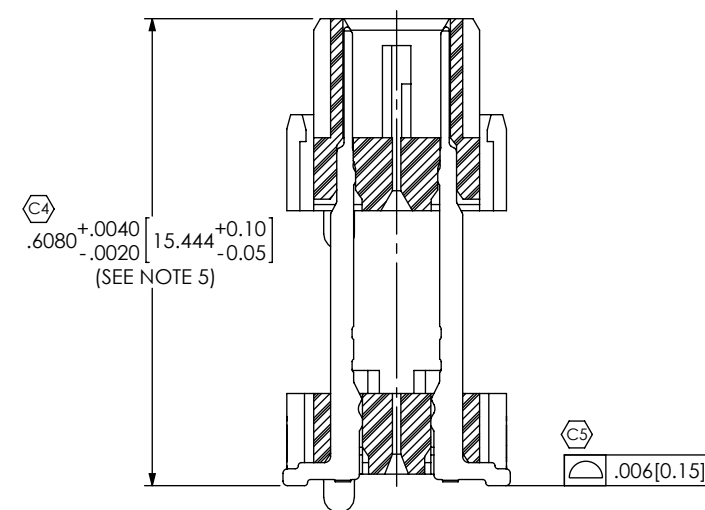
RECOMMENDED PCB LAYOUT



(ALL DIMENSIONS ARE SYMMETRIC ABOUT THE CENTERLINE)

SECTION "A"- "A"
SCALE 5 : 1

IN-PROCESS



PROPRIETARY NOTE

THIS DOCUMENT CONTAINS INFORMATION
CONFIDENTIAL AND PROPRIETARY TO
SAMTEC, INC. AND SHALL NOT BE REPRODUCED
OR TRANSFERRED TO OTHER DOCUMENTS OR
DISCLOSED TO OTHERS OR USED FOR ANY
PURPOSE OTHER THAN THAT WHICH IT WAS
OBTAINED WITHOUT THE EXPRESSED WRITTEN
CONSENT OF SAMTEC, INC.

SHEET SCALE: 2.5:1

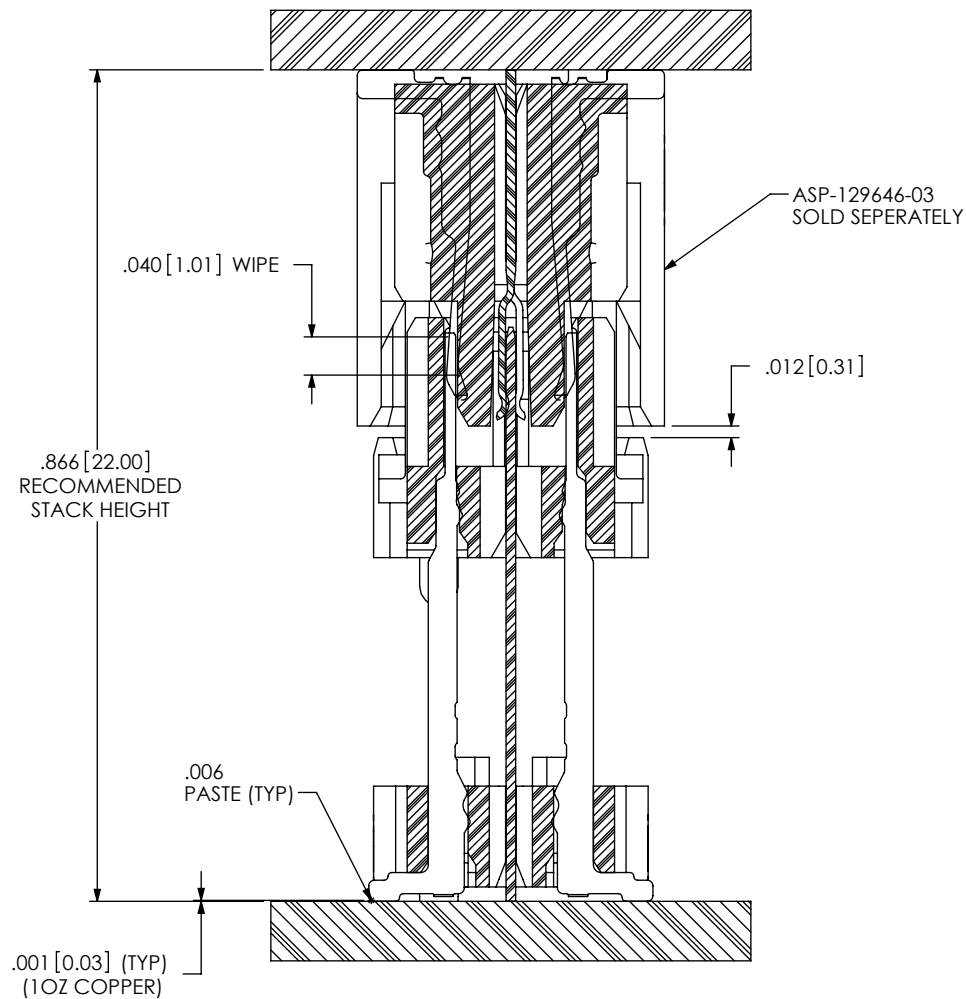
samtec

520 PARK EAST BLVD, NEW ALBANY, IN 47150
PHONE: 812-944-6733 FAX: 812-948-5047
e-Mail: info@SAMTEC.com code: 55322

DESCRIPTION:
ELEVATED QMS ASSM (22MM STACK)

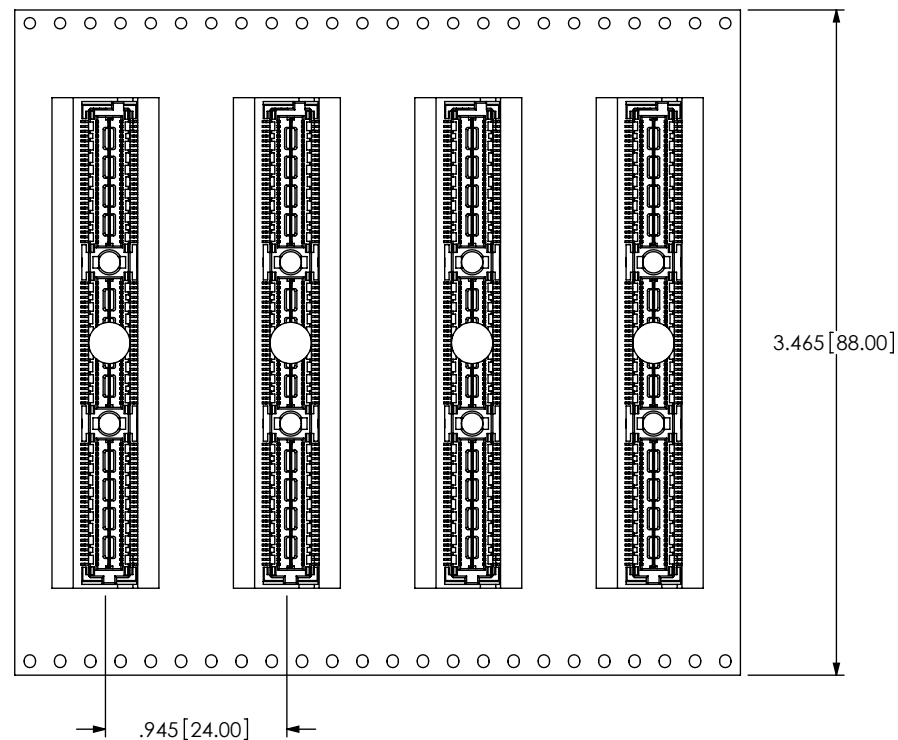
DWG. NO.
ASP-142781-03

BY: C. RYAN 10/17/2008 SHEET 2 OF 3

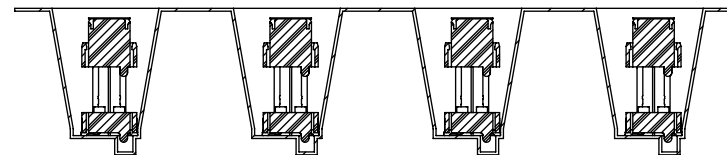


MATED VIEW
USE STANDOFF SO-2200-03-01-02-L-N WHEN MATING

PACKAGING VIEW
(SEE NOTE 9)



USER DIRECTION OF UN-REELING →
POCKET NOT DETAILED



PROPRIETARY NOTE

THIS DOCUMENT CONTAINS INFORMATION
CONFIDENTIAL AND PROPRIETARY TO:
SAMTEC, INC. AND SHALL NOT BE REPRODUCED
OR TRANSFERRED TO OTHER DOCUMENTS OR
DISCLOSED TO OTHERS OR USED FOR ANY
PURPOSE OTHER THAN THAT WHICH IT WAS
OBTAINED WITHOUT THE EXPRESSED WRITTEN
CONSENT OF SAMTEC, INC.

SHEET SCALE: 5:1

samtec

520 PARK EAST BLVD, NEW ALBANY, IN 47150
PHONE: 812-944-6733 FAX: 812-948-5047
e-Mail: info@SAMTEC.com code: 55322

DESCRIPTION:
ELEVATED QMS ASSM (22MM STACK)

DWG. NO.
ASP-142781-03

BY: C. RYAN 10/17/2008 SHEET 3 OF 3