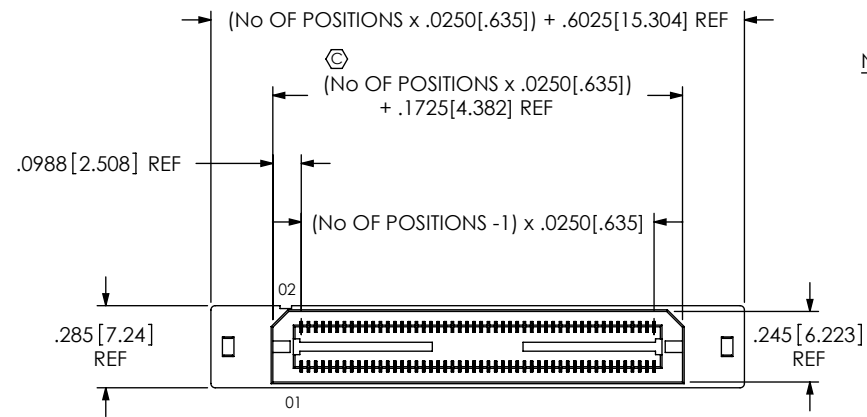


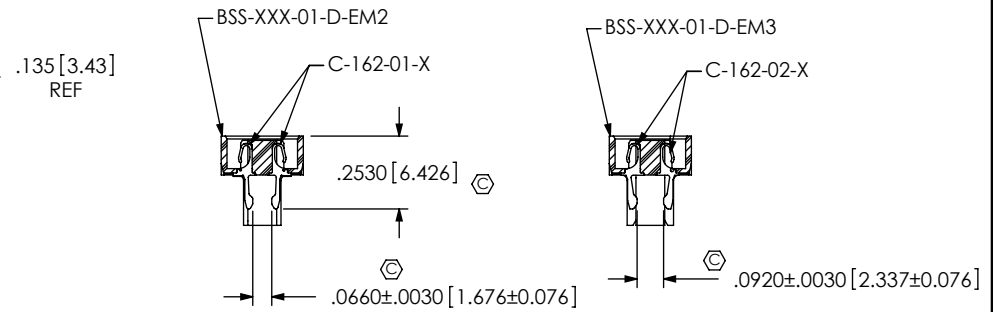
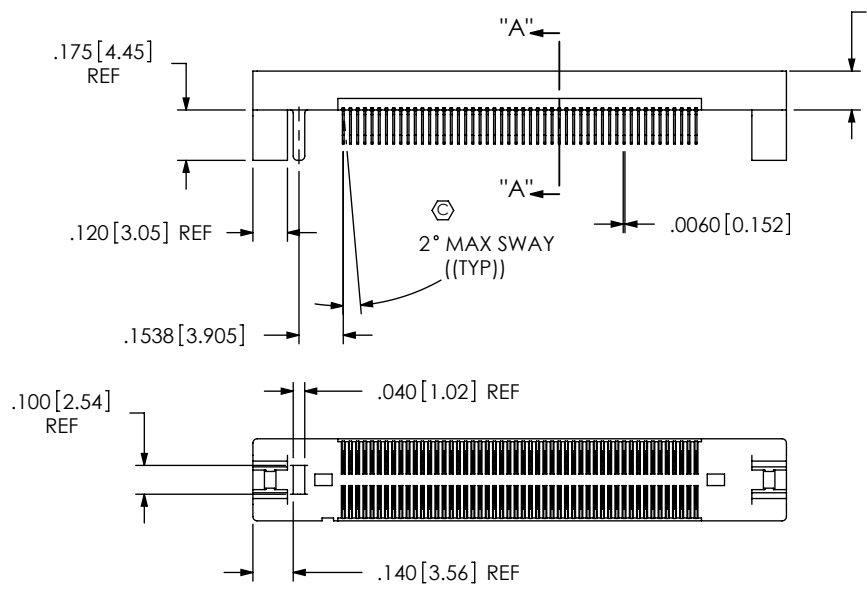
REVISION J

DO NOT SCALE FROM THIS PRINT



BSS-XXX-01-X-D-EMX

- No OF POSITIONS (PER ROW)
- 025, -050, -075, *
 - *-100, *125, *-150
 - * SEE NOTE 7
- LEAD STYLE
- 01
- EDGE MOUNT THICKNESS
- EM2: .064 [1.63] ± .004 PCB (USE BSS-XXX-01-D-EM2 & C-162-01-X-2)
 - EM3: (USE BSS-XXX-01-D-EM3 & C-162-02-X-2)
- SEE NOTE 6**
- ROW SPECIFICATION
- D: DOUBLE (USE BSS-XXX-01-D-EMX)
- PLATING SPECIFICATION
- L: 10µ" SELECTIVE GOLD IN CONTACT AREA, MATTE TIN ON TAILS
 - F: 3µ" SELECTIVE GOLD IN CONTACT AREA, MATTE TIN ON TAILS
 - H: 30µ" GOLD IN CONTACT AREA, 3µ" GOLD ON TAIL

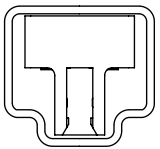


SECTION "A-A"
EDGE MOUNT THICKNESS
-EM2: .064 [1.63] ± .004 PCB

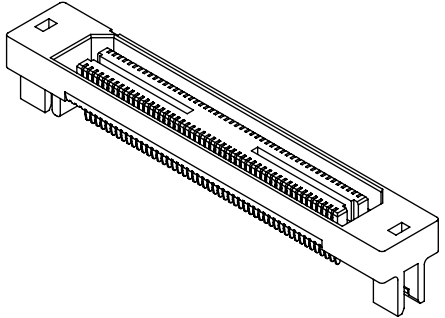
SECTION "A-A"
EDGE MOUNT THICKNESS
-EM3:
SEE NOTE 6
(DIFFERENT AS SHOWN, OTHERWISE SAME AS -EM2 PCB THICKNESS)

- NOTES:
1. Ⓢ REPRESENTS A CRITICAL DIMENSION.
 2. CONTACT RETENTION: 4 OZ MIN.
 3. DELETED.
 4. PARTS ARE "MOLD TO POSITION".
 5. MAX VARIANCE OF .002.
 6. -EM3 IS NOT A STANDARD OFFERING; AVAILABLE AS AN ASP ONLY. PLEASE CONTACT SAMTEC INTERCONNECT PROCESSING GROUP WITH ORDER INQUIRIES.
 7. FOR NEW APPLICATIONS REQUIRING THESE POSITIONS. PLEASE CONTACT SAMTEC INTERCONNECT GROUP.

PACKAGING VIEW



TUBE: PT-1-24-02-38
PLUG: TP-03



<p>UNLESS OTHERWISE SPECIFIED, DIMENSIONS ARE IN INCHES. TOLERANCES ARE:</p> <p>DECIMALS ANGLES</p> <p>.XX: ±.01 [.3] 2°</p> <p>.XXX: ±.005 [.13]</p> <p>.XXXX: ±.0020 [.051]</p>	<p>PROPRIETARY NOTE</p> <p>THIS DOCUMENT CONTAINS INFORMATION CONFIDENTIAL AND PROPRIETARY TO SAMTEC, INC. AND SHALL NOT BE REPRODUCED OR TRANSFERRED TO OTHER DOCUMENTS OR DISCLOSED TO OTHERS OR USED FOR ANY PURPOSE OTHER THAN THAT WHICH IT WAS OBTAINED WITHOUT THE EXPRESSED WRITTEN CONSENT OF SAMTEC, INC.</p>	<p>DESCRIPTION:</p> <p>.635mm EDGE MOUNT MI SOCKET ASSEMBLY</p>	
		<p>DWG. NO. BSS-XXX-01-X-D-EMX</p>	
<p>MATERIAL: DO NOT SCALE DRAWING SHEET SCALE: 1.5:1</p> <p>INSULATOR: VECTRA E130; COLOR: BLACK</p> <p>CONTACT: PHOS BRONZE, 510 SPRING TEMPER THICKNESS: .0060</p>		<p>BY: DEAN P 5/26/2000 SHEET 1 OF 1</p>	