

DO NOT  
SCALE FROM  
THIS PRINT

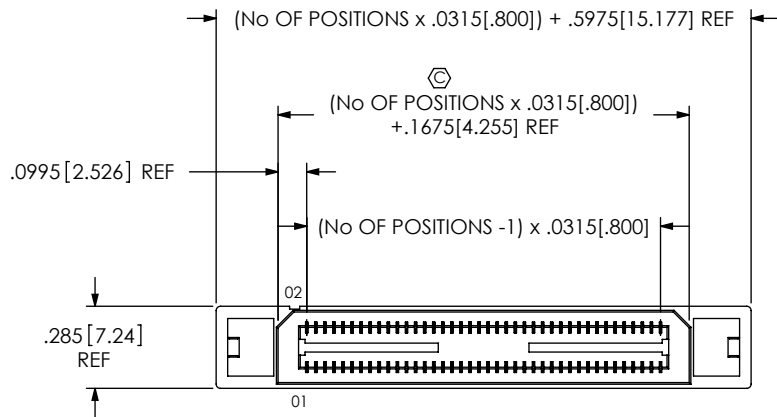
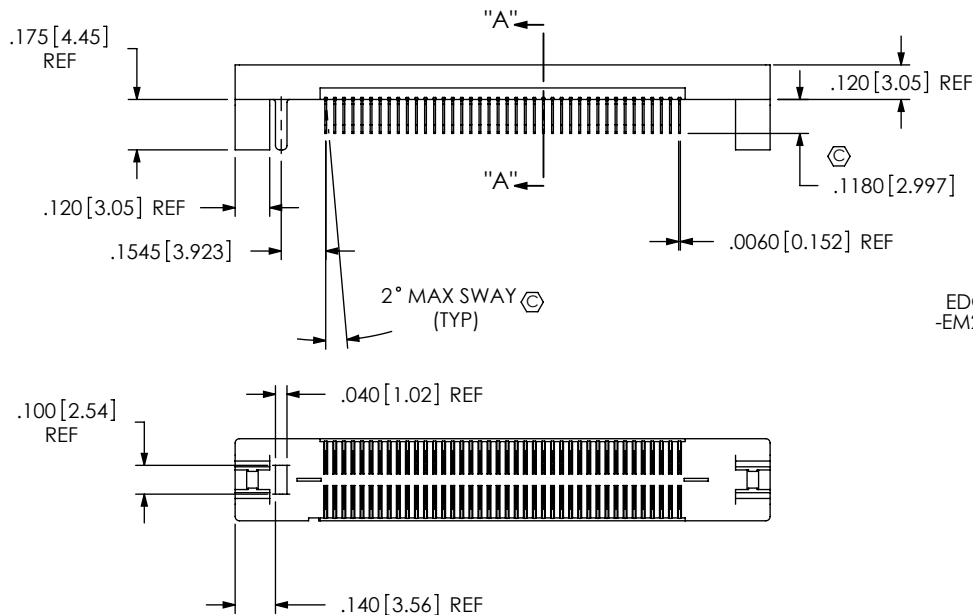


FIG. 1  
BSE-040-01-X-D-EM2 SHOWN



BSE-XXX-01-X-D-EMX-XX

No OF POSITIONS (PER ROW)

-020, -040, -060  
\*\*-080, \*\*-100, \*\*-120

LEAD STYLE  
-01

PLATING SPECIFICATION

-L: LIGHT SELECTIVE GOLD WITH  
MATTE TIN TAILS  
(USE C-162-XX-L)  
-F: FLASH SELECTIVE GOLD WITH  
MATTE TIN TAILS  
(USE C-162-XX-F)  
-H: HEAVY GOLD  
(USE C-162-XX-H)

OPTION

-GP: GUIDE POST (60 POS MAX)  
(USE BSE-XXX-01-EM2-GP)  
[SEE SHEET 2, FIG. 2 -  
AVAILABLE ONLY ON -EM2]

EDGE MOUNT THICKNESS

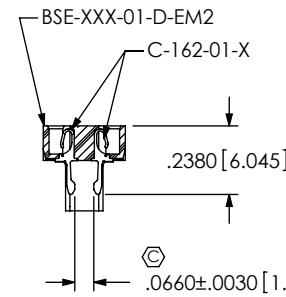
-EM2: .064[1.63] ±.004 PCB  
(USE BSE-XXX-01-D-EM2 & C-162-01-X)  
-EM3: (USE BSE-XXX-01-D-EM3  
& C-162-02-X)

SEE NOTE 6

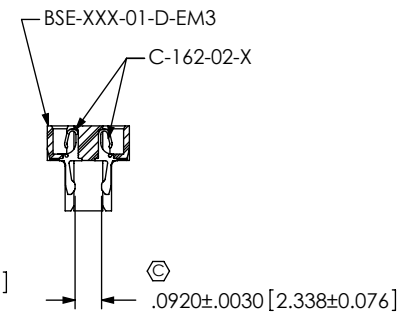
ROW SPECIFICATION

-D: DOUBLE (USE BSE-XXX-01-D-EMX)

\*\*SEE NOTE 7



SECTION "A-A"  
EDGE MOUNT THICKNESS  
-EM2: .064[1.63] ±.004 PCB

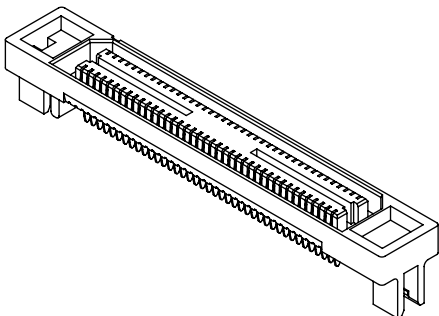


SECTION "A-A"  
EDGE MOUNT THICKNESS  
-EM3:  
SEE NOTE 6

(DIFFERENT AS SHOWN, OTHERWISE  
SAME AS -EM2 PCB THICKNESS)

NOTES:

1. Ⓢ REPRESENTS A CRITICAL DIMENSION.
2. CONTACT RETENTION: 4 OZ MIN.
3. DELETED.
4. PARTS ARE "MOLD TO POSITION".
5. MAX VARIANCE OF .002.
6. -EM3 IS NOT A STANDARD OFFERING;  
AVAILABLE AS AN ASP ONLY. PLEASE CONTACT  
SAMTEC INTERCONNECT PROCESSING GROUP  
WITH ORDER INQUIRIES.
7. FOR NEWAPPLICATIONS REQUIRING THESE POSITIONS  
PLEASE CONTACT SAMTEC INTERCONNECT PROCESSING  
GROUP.



UNLESS OTHERWISE SPECIFIED,  
DIMENSIONS ARE IN INCHES.

TOLERANCES ARE:

DECIMALS ANGLES  
.XX: ±.01[.3] 2°  
.XXX: ±.005[.13]  
.XXXX: ±.0020[.051]

PROPRIETARY NOTE

THIS DOCUMENT CONTAINS INFORMATION  
CONFIDENTIAL AND PROPRIETARY TO  
SAMTEC, INC. AND SHALL NOT BE REPRODUCED  
OR TRANSFERRED TO OTHER DOCUMENTS OR  
DISCLOSED TO OTHERS OR USED FOR ANY  
PURPOSE OTHER THAN THAT WHICH IT WAS  
OBTAINED WITHOUT THE EXPRESSED WRITTEN  
CONSENT OF SAMTEC, INC.

MATERIAL: DO NOT SCALE DRAWING

INSULATOR: VECTRA E130i; COLOR: BLACK  
CONTACT: PHOS BRONZE, 510 SPRING TEMPER  
THICKNESS: .0060

SHEET SCALE: 1.5:1

F:\DWG\MISC\MKTG\BSE-XXX-01-X-D-EMX-XX-MKT.SLDDRW

**samtec**

520 PARK EAST BLVD, NEW ALBANY, IN 47150  
PHONE: 812-944-6733 FAX: 812-948-5047  
e-Mail: info@SAMTEC.com code: 55322

DESCRIPTION:

.8mm EDGE MOUNT MI SOCKET ASSEMBLY

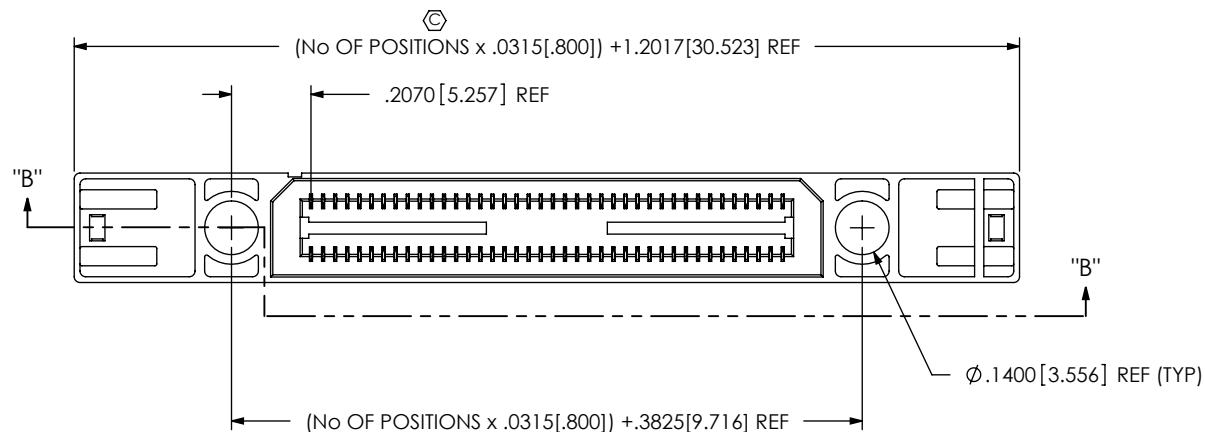
DWG. NO.

BSE-XXX-01-X-D-EMX-XX

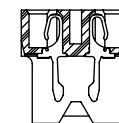
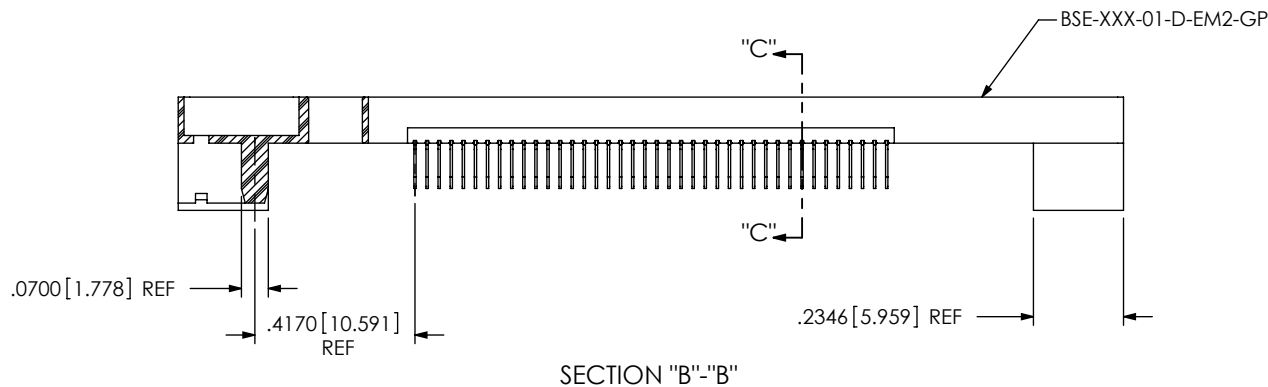
BY: DEAN P

5/25/2000

SHEET 1 OF 2

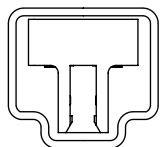


**FIG. 2**  
 -GP: GUIDE POST  
 BSE-040-01-X-D-EM2-GP SHOWN  
 (60 POSITION MAX)  
 [DIFFERENT AS SHOWN, OTHERWISE  
 SAME AS FIG. 1]



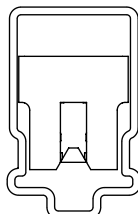
SECTION "C"-"C"

PACKAGING VIEW



-EMX

TUBE: PT-1-24-02-38  
 PLUG: TP-03



-EMX-GP

TUBE: PT-1-24-01-86  
 PLUG: TP-07

**PROPRIETARY NOTE**

THIS DOCUMENT CONTAINS INFORMATION  
 CONFIDENTIAL AND PROPRIETARY TO  
 SAMTEC, INC. AND SHALL NOT BE REPRODUCED  
 OR TRANSFERRED TO OTHER DOCUMENTS OR  
 DISCLOSED TO OTHERS OR USED FOR ANY  
 PURPOSE OTHER THAN THAT WHICH IT WAS  
 OBTAINED WITHOUT THE EXPRESSED WRITTEN  
 CONSENT OF SAMTEC, INC.

DO NOT SCALE DRAWING

SHEET SCALE: 2:1

**samtec**

520 PARK EAST BLVD, NEW ALBANY, IN 47150  
 PHONE: 812-944-6733 FAX: 812-948-5047  
 e-Mail: info@SAMTEC.com code: 55322

DESCRIPTION:  
 .8mm EDGE MOUNT MI SOCKET ASSEMBLY

DWG. NO.  
**BSE-XXX-01-X-D-EMX-XX**

BY: DEAN P 5/25/2000 SHEET 2 OF 2