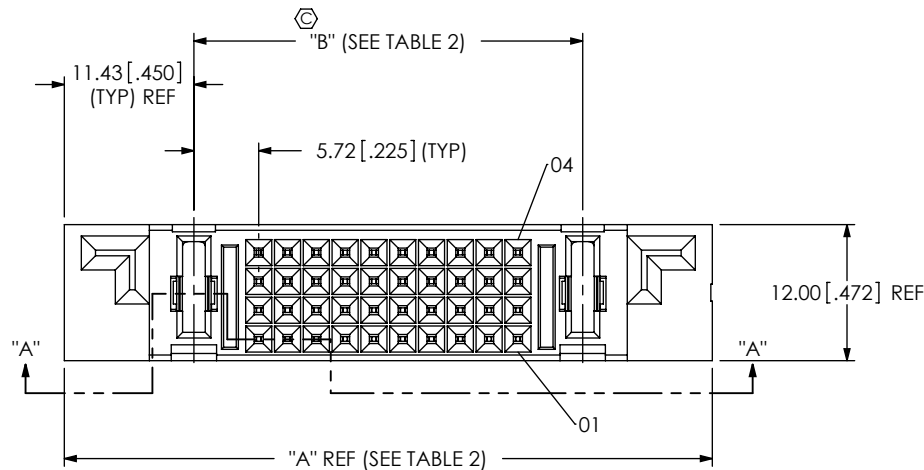


DO NOT  
SCALE FROM  
THIS PRINT



PESC-XX-XX-XX-01-X-VT-XX

POWER PINS (PER END)  
-01, -02, -04  
(SEE TABLE 1 FOR AVAILABLE COMBINATIONS)

SIGNAL PINS  
-12  
-40 (SEE TABLE 1 FOR AVAILABLE COMBINATIONS)

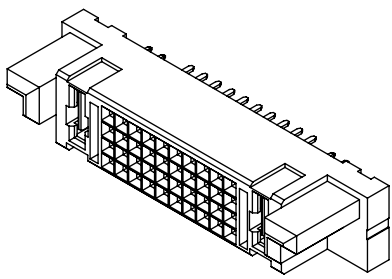
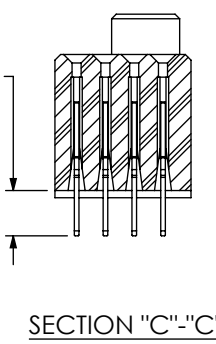
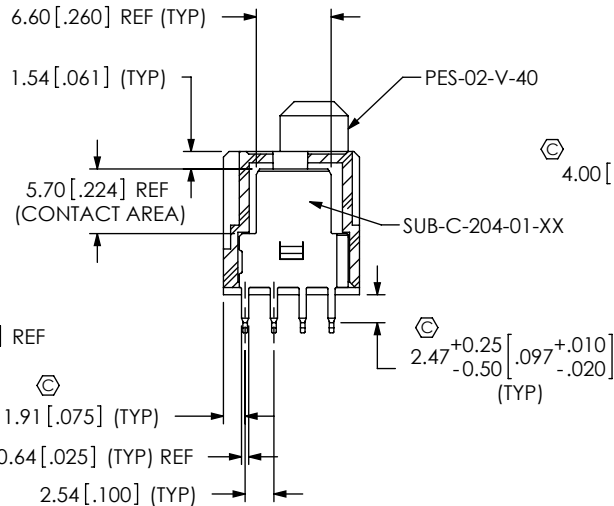
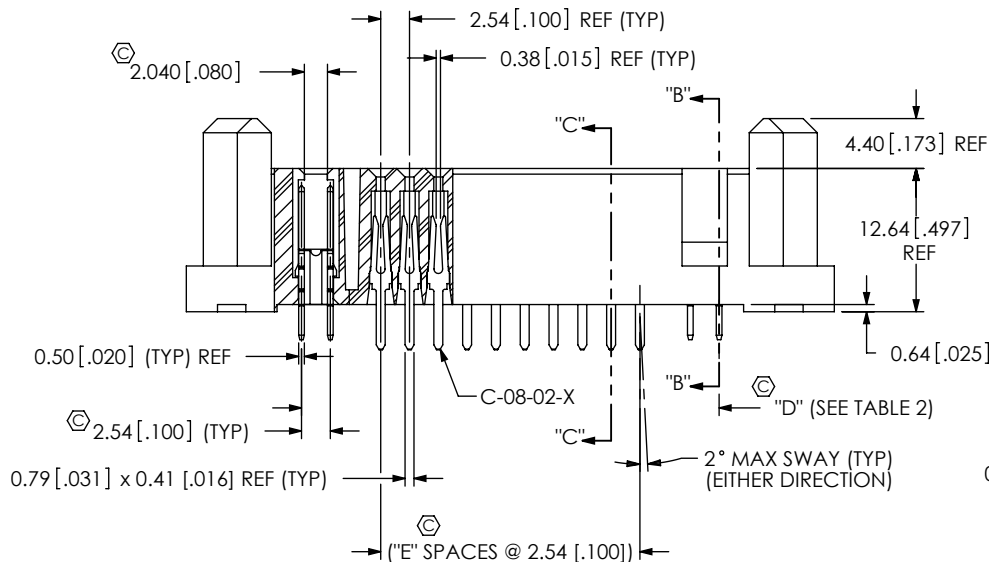
POWER PINS (PER END)  
-01, -02, -04 (SEE TABLE 1 FOR AVAILABLE COMBINATIONS)

LEAD STYLE  
-01

OPTION  
-LC: LOCKING CLIP  
(USE LC-11-TM)  
(SEE FIG 2, SHT 2)

VERTICAL

PLATING SPECIFICATION  
-S: SELECTIVE GOLD ON CONTACT /MATTE TIN ON TAIL  
-T: MATTE TIN ALL OVER  
-L: LIGHT SELECTIVE GOLD ON CONTACT/MATTE TIN ON TAIL



SECTION "A"- "A"

FIG 1

PESC-01-40-01-01-X-VT SHOWN

SECTION "B"- "B"

SECTION "C"- "C"

TABLE 1		
PART NUMBER	MAX	"E"
PESC-01-12-01-01-X-VT-XX	0.15 [.006]	2
PESC-02-12-02-01-X-VT-XX	0.20 [.008]	2
PESC-04-12-04-01-X-VT-XX	0.20 [.008]	2
PESC-01-40-01-01-X-VT-XX	0.15 [.006]	9
PESC-02-40-02-01-X-VT-XX	0.20 [.008]	9
PESC-04-40-04-01-X-VT-XX	0.20 [.008]	9

- NOTES:
- ⊗ REPRESENTS A CRITICAL DIMENSION.
  - BURR ALLOWANCE: 0.13[.005] MAX.
  - MINIMUM PUSHOUT FORCE: 2.22N [.5 LB].
  - PARTS TO BE PACKAGED IN TRAYS.

CPC FREQUENCY THIS SHEET		UNLESS OTHERWISE SPECIFIED, DIMENSIONS ARE IN MILLIMETERS. TOLERANCES ARE:		PROPRIETARY NOTE THIS DOCUMENT CONTAINS INFORMATION CONFIDENTIAL AND PROPRIETARY TO SAMTEC, INC. AND SHALL NOT BE REPRODUCED OR TRANSFERRED TO OTHER DOCUMENTS OR DISCLOSED TO OTHERS OR USED FOR ANY PURPOSE OTHER THAN THAT WHICH IT WAS OBTAINED WITHOUT THE EXPRESSED WRITTEN CONSENT OF SAMTEC, INC.	
A	C1, C4, C5, C7, C11, C13	DECIMALS	ANGLES		
		.X: ±0.3 [.01]	2 °		
		.XX: ±0.13 [.005]			
B	C6, C8	.XXX: ±0.051 [.0020]			
		MATERIAL: DO NOT SCALE DRAWING		SHEET SCALE: 1:0.666667	
		INSULATOR: LCP, COLOR: BLACK			
C		CONTACT: COPPER ALLOY			
D					
		F:\DWG\MISC\MKTG\PESC-XX-XX-XX-01-X-VT-XX-MKT.SLDDRW			

520 PARK EAST BLVD, NEW ALBANY, IN 47150 PHONE: 812-944-6733 FAX: 812-948-5047 e-Mail: info@SAMTEC.com code: 55322	
DESCRIPTION: VERTICAL POWER SOCKET	
DWG. NO. PESC-XX-XX-XX-01-X-VT-XX	
BY: CLAY W	1/10/2006
SHEET 1 OF 2	

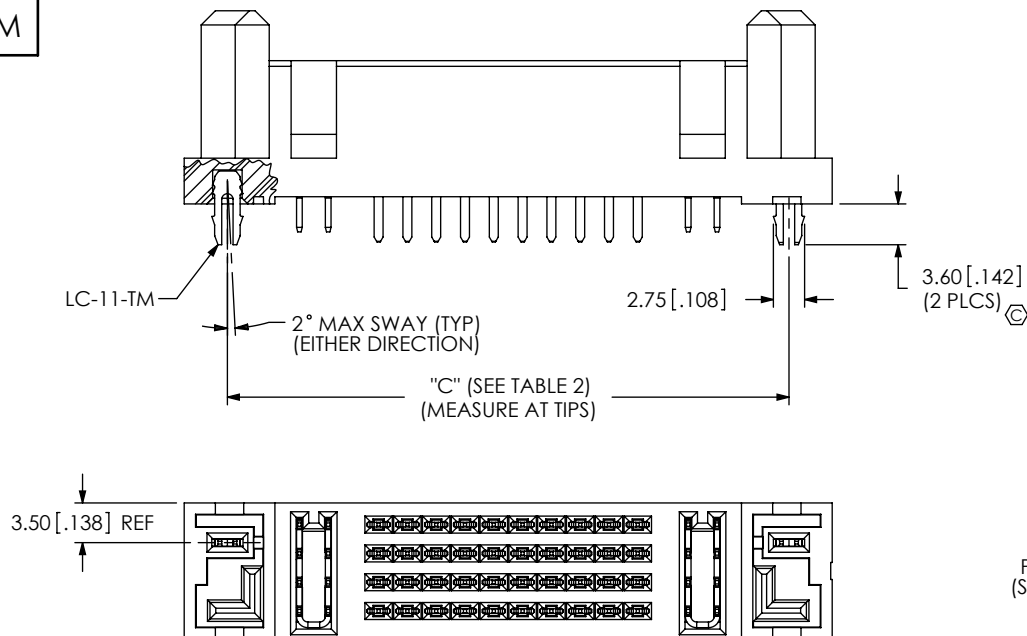


FIG 2  
PESC-01-40-01-01-X-VT-LC SHOWN  
(SAME AS FIG 1, EXCEPT AS SHOWN)

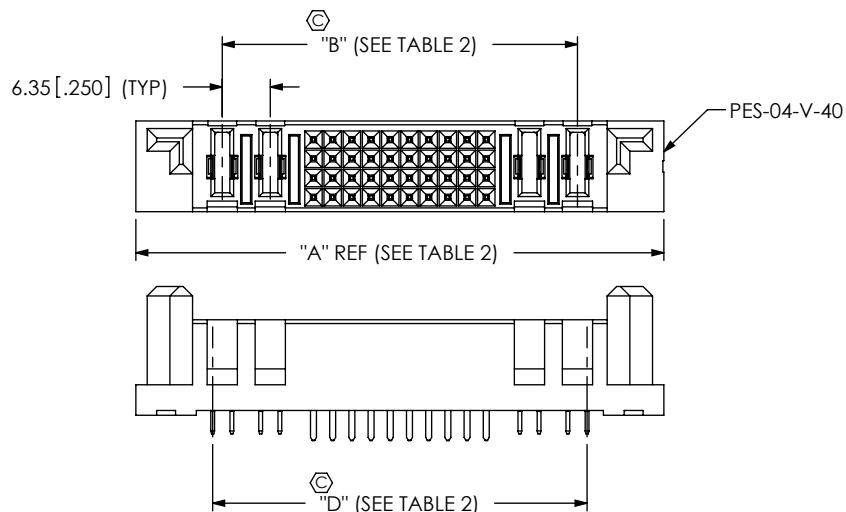
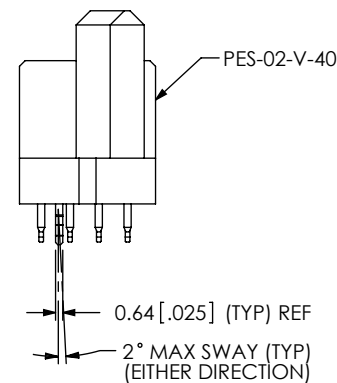


FIG 3  
PESC-02-40-02-01-X-VT SHOWN  
(SAME AS FIG 1 EXCEPT AS SHOWN)

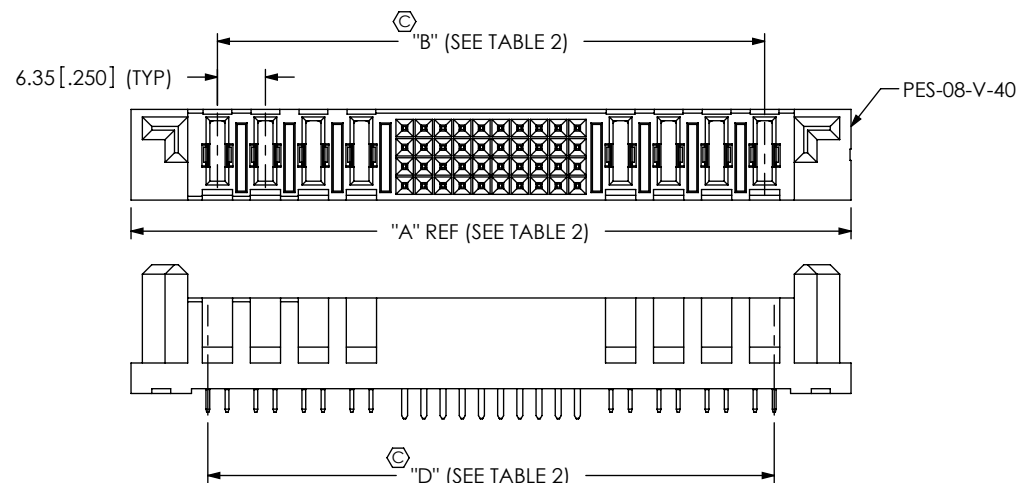


FIG 4  
PESC-04-40-04-01-X-VT SHOWN  
(SAME AS FIG 1 EXCEPT AS SHOWN)

TABLE 2				
PART NUMBER	"A"	"B"	"C"	"D"
PESC-01-12-01-01-X-VT-XX	39.37 [1.550]	16.51 [.650]	31.75 [1.250]	19.05 [.750]
PESC-02-12-02-01-X-VT-XX	52.07 [2.050]	29.21 [1.150]	44.45 [1.750]	31.75 [1.250]
PESC-04-12-04-01-X-VT-XX	77.47 [3.050]	54.61 [2.150]	69.85 [2.750]	57.13 [2.250]
PESC-01-40-01-01-X-VT-XX	57.15 [2.250]	34.29 [1.350]	49.53 [1.950]	36.83 [1.450]
PESC-02-40-02-01-X-VT-XX	69.85 [2.750]	46.99 [1.850]	62.23 [2.450]	49.53 [1.950]
PESC-04-40-04-01-X-VT-XX	95.25 [3.750]	72.39 [2.850]	87.63 [3.450]	74.93 [2.950]

F:\DWG\MISC\MKTG\PESC-XX-XX-XX-01-X-VT-XX-MKT.SLDDRW

CPC FREQUENCY THIS SHEET	
A	C1, C11
B	C9
C	
D	

PROPRIETARY NOTE  
THIS DOCUMENT CONTAINS INFORMATION  
CONFIDENTIAL AND PROPRIETARY TO  
SAMTEC, INC. AND SHALL NOT BE REPRODUCED  
OR TRANSFERRED TO OTHER DOCUMENTS OR  
DISCLOSED TO OTHERS OR USED FOR ANY  
PURPOSE OTHER THAN THAT WHICH IT WAS  
OBTAINED WITHOUT THE EXPRESSED WRITTEN  
CONSENT OF SAMTEC, INC.

DO NOT SCALE DRAWING

SHEET SCALE: 1:0.666667

**samtec**

520 PARK EAST BLVD, NEW ALBANY, IN 47150  
PHONE: 812-944-6733 FAX: 812-948-5047  
e-Mail: info@SAMTEC.com code: 55322

DESCRIPTION:  
VERTICAL POWER SOCKET

DWG. NO.  
**PESC-XX-XX-XX-01-X-VT-XX**

BY: CLAY W 1/10/2006 SHEET 2 OF 2