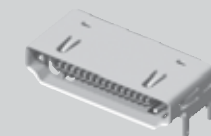




HDMR-19-01-F-SM-PF



HDMR-19-02-S-SM



HDMR-29-01-S-SM

HDMR SERIES

HIGH SPEED I/O RECEPTACLES

SPECIFICATIONS

For complete specifications and recommended PCB layouts see www.samtec.com?HDMR

Insulator Material:

High Temperature

Thermoplastic

Contact Material:

Copper Alloy

Shell Material:

Steel

Operating Temp Range:

-25°C to +85°C

Plating:

Gold on Contacts, Nickel on Shell and Tin on Tails

Current Rating:

1.2 A per contact

Voltage Rating:

40 VAC

Contact Resistance:

30 mΩ

Minimum Cycles:

100

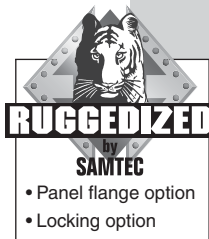
Lead-Free Solderable:

Yes

RoHS Compliant:

Yes

Mates with:
HPDPI



Meets Digital Display
Working Group Single
Monitor Interface
Specifications

Hot
Pluggable

Selectively
Plated

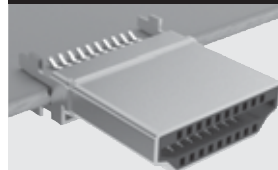
19 or 29
Positions

Surface Mount
or Through-hole
Signal Leads

Optional Panel Flange
(19 position only)

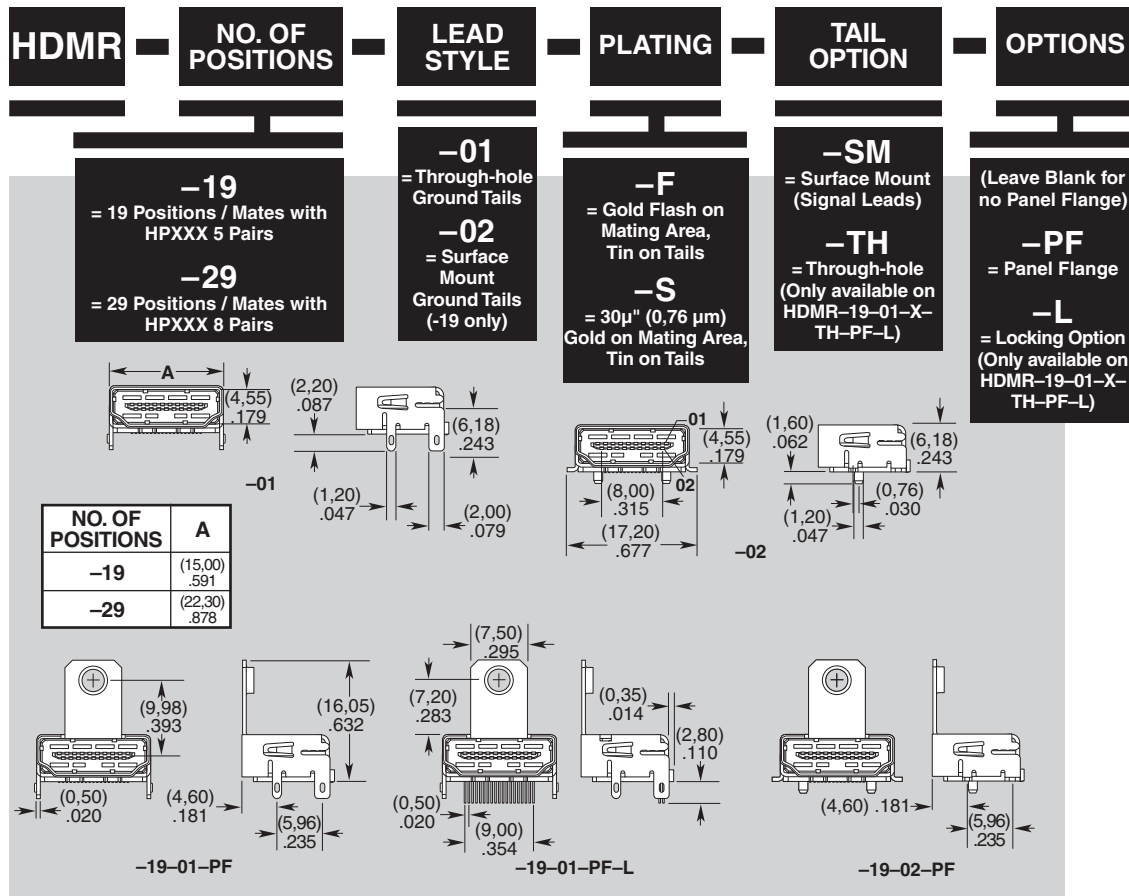
Through-hole
or Surface Mount
(19 only)
Ground tails

ALSO AVAILABLE



HDMP is an Edge Mount plug that mates to HDMR receptacles.

Call Samtec for HDMP Series specifications.



Note: Some lengths, styles and options are non-standard, non-returnable.

Due to technical progress, all designs, specifications and components are subject to change without notice.

WWW.SAMTEC.COM

SAMTEC USA • Tel: 1-800-SAMTEC-9 or 812-944-6733 SAMTEC NORTHERN CALIFORNIA • Tel: 408-395-5900 SAMTEC SOUTHERN CALIFORNIA • Tel: 1-800-726-8329
 SAMTEC AMERICA LATINA COMERCIO EXTERIOR LTDA • Tel: (+55 31) 3786 3227 SAMTEC UNITED KINGDOM • Tel: 44 01236 739292 SAMTEC GERMANY • Tel: +49 (0) 89 / 89460-0
 SAMTEC FRANCE • Tel: 33 01 60 95 06 60 SAMTEC ITALY • Tel: 39 039 6890337 SAMTEC NORDIC/BALTIC • Tel: +46-84477280 SAMTEC BENELUX • Tel: 44 01236 739292
 SAMTEC ISRAEL • Tel: 972-3-7526600 SAMTEC INDIA • Tel: +91-80-3272 1612 SAMTEC ASIA PACIFIC • Tel: 65 6745-5955 SAMTEC JAPAN • Tel: 045-475-1385 SAMTEC CHINA • Tel: 86-21-6083 3766
 SAMTEC TAIWAN • Tel: 886-2-2735-6109 SAMTEC HONG KONG • Tel: 852-26904858 SAMTEC KOREA • Tel: 82-31-717-5685 SAMTEC ANZ • Tel: 613 9580 0683