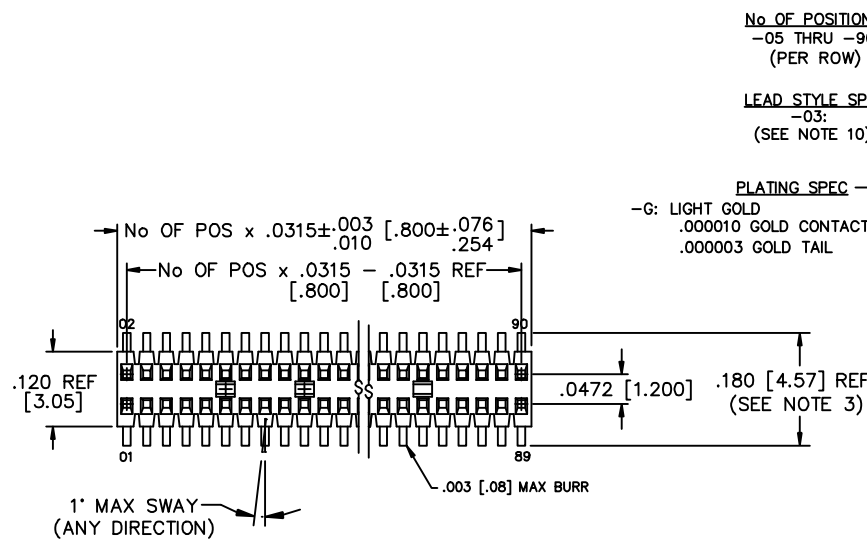


AW-XX-03-X-D-XXX-XXX-XX



- PLATING SPEC**
-G: LIGHT GOLD
.000010 GOLD CONTACT AREA,
.000003 GOLD TAIL
- LEAD STYLE SPEC**
-03:
(SEE NOTE 10)
- No OF POSITIONS**
-05 THRU -90
(PER ROW)
- OPTIONS**
-P: PICK & PLACE PAD (8 POS MIN, SEE FIG. 2, SHEET 2)
-ES: END SHROUD
(SEE FIG. 4 SHEET 2 FOR SNAPPED-ON)
(USE FTE-ES, 11 POS MIN)
(SEE NOTE 5)
(SEE FIG. 7 SHEET 3 FOR MOLDED)
(5 POS MIN)
-EP: END SHROUD GUIDE POST (SEE FIG. 4 SHEET 2)
(USE FTE-EP, 11 POS MIN)
(SEE NOTE 5)
-A: ALIGNMENT PIN OPTION
MOLDED (04-90 POSITIONS) (SEE FIG 5 SHEET 2)
(MOLDED NOT AVAILABLE ON ALL POS)
STAKED (08-90 POSITIONS) (SEE FIG 6 SHEET 2)
(SEE NOTE 6)
-TR: TAPE & REEL OPTION
(84 POSITIONS MAX)
- POST HEIGHT**
.075 [1.91] MINIMUM
POST + SPACE = .305 [7.75] MAX
- SPACE OPTION**
"A": .230 [5.84] MAX w/ .075 [1.91] POST
.122 [3.09] MIN
- ROW SPEC**
-D: DOUBLE ROW VERTICAL
(SEE NOTE 4)

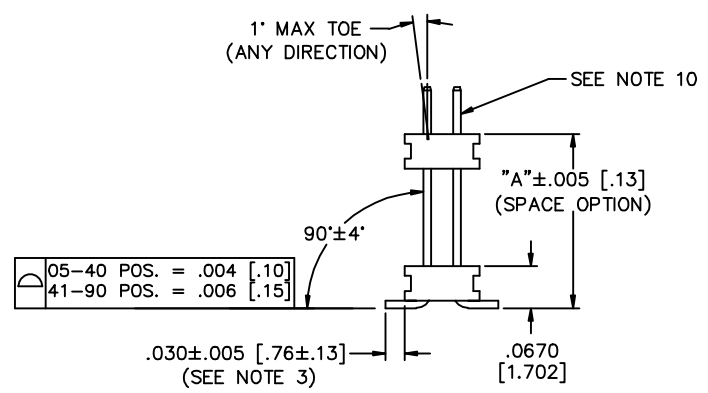
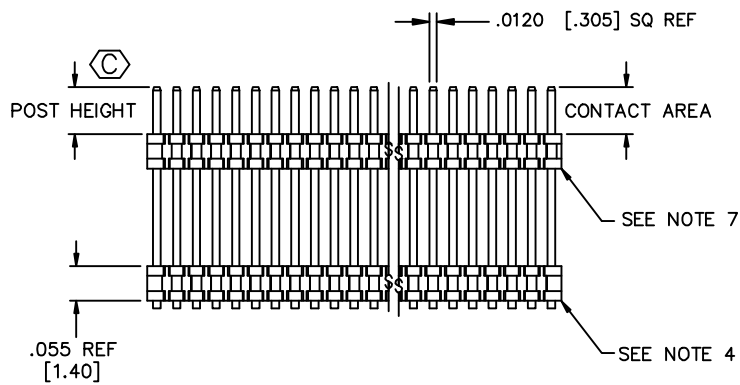


FIG. 1

- NOTES:**
- NOTE DELETED
 - MINIMUM PUSHOUT FORCE: .5 LBF.
 - TAILS TO BE SHEARED TO DIMENSION SHOWN.
 - BOTTOM BODY USE FTE-90-D FOR HANDFILL, USE AW-90-D-A FOR AUTOMATION.
 - FOR USE WITH .075 [1.91] POST HEIGHT ONLY
 - FOR USE WITH BOARD STACKS BETWEEN .160 [4.06] AND .230 [5.84] ONLY.
 - USE FTE-90-D-A FOR TOP BODY (PLACE BODY SO THAT ALIGNMENT PIN CORES ARE NOT VISIBLE).
 - .010 [.25] MAX CUT FLASH
 - ⊕ REPRESENTS A CRITICAL DIMENSION.
 - USE T-1S29-02-X FOR MACHINE FILLED.
USE T-1S29-04-X FOR HAND FILLED.

PROPRIETARY NOTE
THIS DOCUMENT CONTAINS INFORMATION CONFIDENTIAL AND PROPRIETARY TO SAMTEC INC AND SHALL NOT BE REPRODUCED OR TRANSMITTED TO OTHER DOCUMENTS OR DISCLOSED TO OTHERS OR USED FOR ANY PURPOSE OTHER THAN THAT FOR WHICH IT WAS OBTAINED WITHOUT THE EXPRESS WRITTEN CONSENT OF SAMTEC INC.

MATERIAL: BODY: VECTRA E130I COLOR: BLACK (TOP) NATURAL (BOTTOM)	EXISPROD\ASSEMBLY\POINTBMM AW-ASM	
TERMINAL: PHOS BRONZE	520 PARK EAST BLVD. NEW ALBANY, INDIANA 47150 PHONE (812) 944-6733 P.O. BOX 1147 CODE 55322	
	MADE BY: PURVIS 12-14-95	AW-XX-03-X-D-XXX-XXX-XX SHEET 1 OF 3

DIMENSIONS ARE IN INCHES		UNLESS OTHERWISE NOTED	TOLERANCES ARE:
ONE PLACE DECIMALS ±.1[2.5]	THREE PLACE DECIMALS ±.005[.13]	ANGLES	± 2°
TWO PLACE DECIMALS ±.01[.3]	FOUR PLACE DECIMALS ±.0020[.051]		

TITLE:
.8MM x 1.2MM C.L.
TERMINAL STRIP ASSM

DWG NO:
AW-XX-03-X-D-XXX-XXX-XX
SHEET 2 OF 3

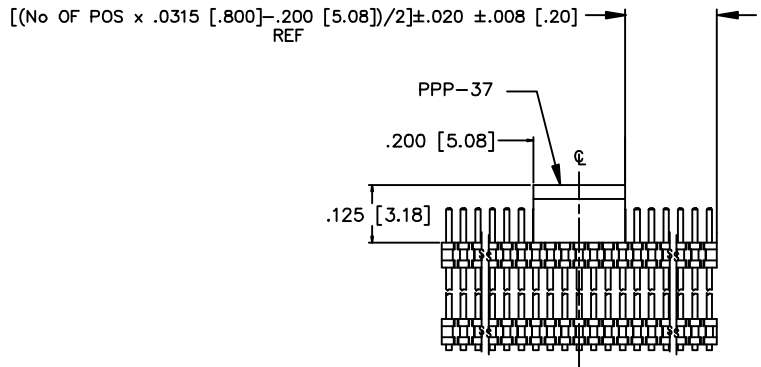


FIG. 1
SCALE: .75x
(8 POSITIONS MINIMUM)

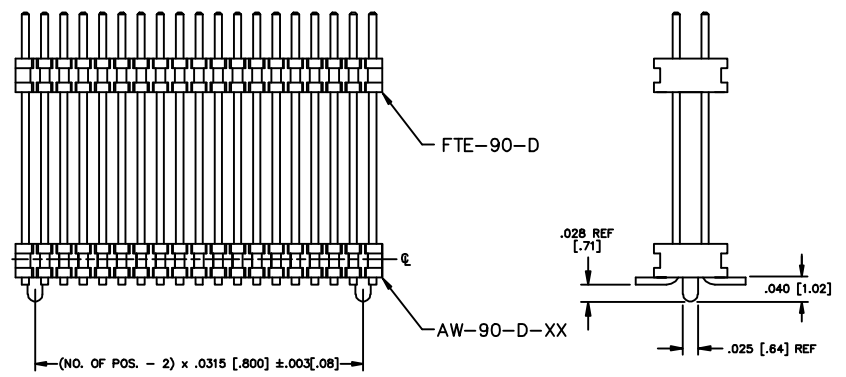


FIG. 2
(DIFFERENT AS SHOWN, OTHERWISE SAME AS FIG. 1)
-A OPTION
MOLDED
(4 POS MIN)

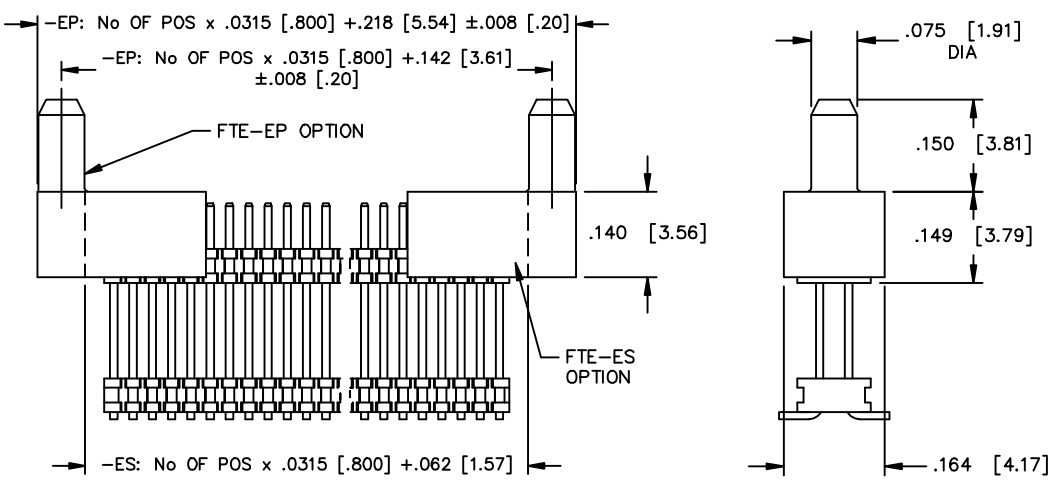
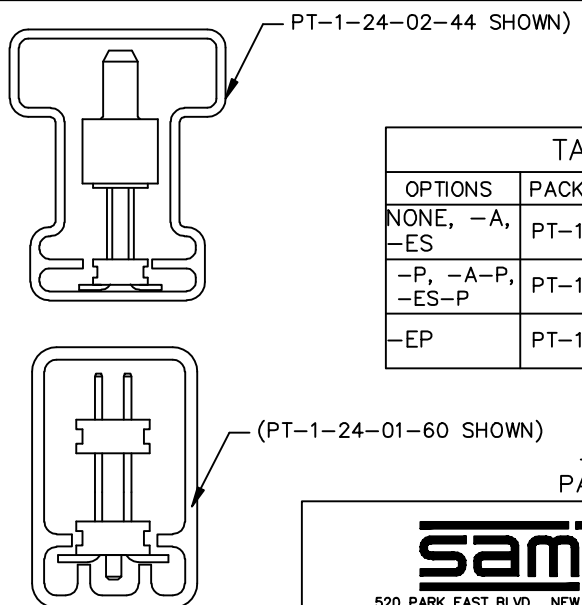


FIG. 3
POST HEIGHT MUST BE .075 [1.91]
(DIFFERENT AS SHOWN, OTHERWISE SAME AS FIG. 1)



OPTIONS	PACKAGING TUBE	PLUG
NONE, -A, -ES	PT-1-24-01-60	TP-09
-P, -A-P, -ES-P	PT-1-24-02-60	TP-03
-EP	PT-1-24-02-44	TP-03

FIG. 4
PACKAGING

PROPRIETARY NOTE
THIS DOCUMENT CONTAINS INFORMATION CONFIDENTIAL AND PROPRIETARY TO SAMTEC INC. AND SHALL NOT BE REPRODUCED OR TRANSMITTED TO OTHER DOCUMENTS OR DISCLOSED TO OTHERS OR USED FOR ANY PURPOSE OTHER THAN THAT FOR WHICH IT WAS OBTAINED WITHOUT THE EXPRESS WRITTEN CONSENT OF SAMTEC INC.

EXISPROD\ASSEMBLY\POINTBMM
AW-ASM2

samtec

520 PARK EAST BLVD. NEW ALBANY, INDIANA 47150
PHONE (812) 944-6733 P.O. BOX 1147
CODE 55322

MADE BY: PURVIS 12-14-95 AW-XX-03-X-D-XXX-XXX-XX
SHEET 2 OF 3

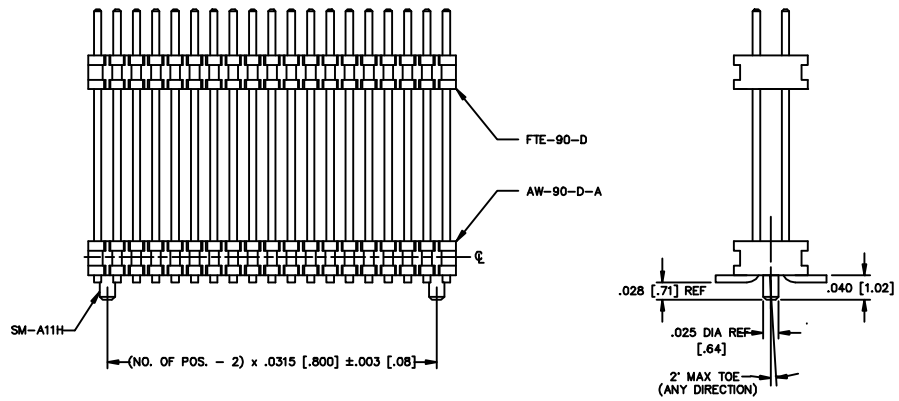


FIG. 6
 (DIFFERENT AS SHOWN, OTHERWISE SAME AS FIG. 1)
 -A OPTION
 (STAKED)
 (7 POS MIN)

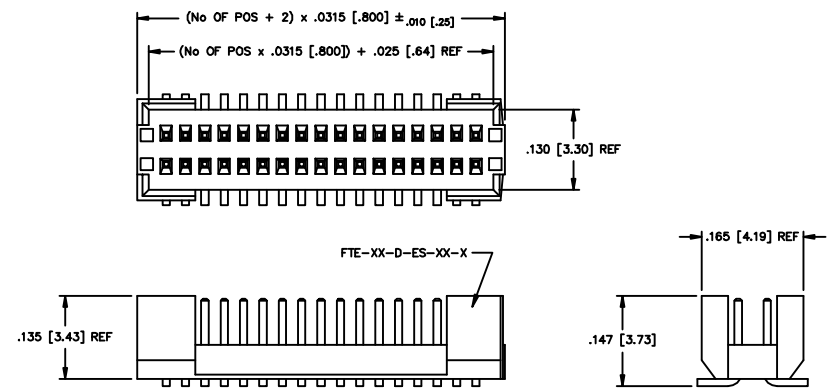


FIG. 7
 (DIFFERENT AS SHOWN, OTHERWISE SAME AS FIG. 1)
 -ES OPTION
 (MOLDED)
 (5 POS MIN)

PROPRIETARY NOTE
 THIS DOCUMENT CONTAINS INFORMATION CONFIDENTIAL AND PROPRIETARY TO SAMTEC INC. AND SHALL NOT BE REPRODUCED OR TRANSMITTED IN ANY FORM OR BY ANY MEANS, ELECTRONIC OR MECHANICAL, INCLUDING PHOTOCOPYING, RECORDING, OR BY ANY INFORMATION STORAGE AND RETRIEVAL SYSTEM, WITHOUT THE EXPRESS WRITTEN CONSENT OF SAMTEC INC.

EXISPROD\ASSEMBLY\POINT8MM
 AW-ASM2

samtec

520 PARK EAST BLVD. NEW ALBANY, INDIANA 47150
 PHONE (812) 944-6733 P.O. BOX 1147
 CODE 55322

MADE BY: PURVIS 12-14-95 AW-XX-03-X-D-XXX-XXX-XX
 SHEET 3 OF 3