

1mm (.039") BOARD SPACERS MW SERIES

Specifications: MW

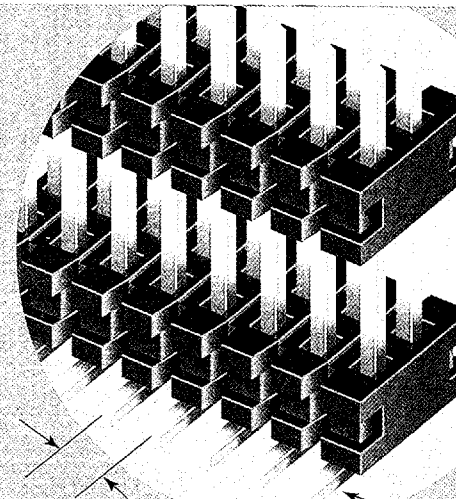
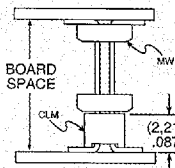
HI-TEMP

Insulator Material: Black Liquid Crystal Polymer
 Terminal Material: Phosphor Bronze
 Current Rating: 1.5A @ 80°C ambient
 Operating Temp Range: -65°C to +125°C
 Max Processing Temp: 230°C for 60 seconds
 Plating: Sn or Au over 50µ" (1.27µm) Ni
 SMT Lead Coplanarity: .004" (0,10mm) max

Plates with: CLM, MLE, QCLM

APPLICATIONS

EXAMPLES		
Lead Style	BOARD SPACE	
MW	CLM	(6,35) .250
-163-055	-02	(8,13) .320
-233-055		

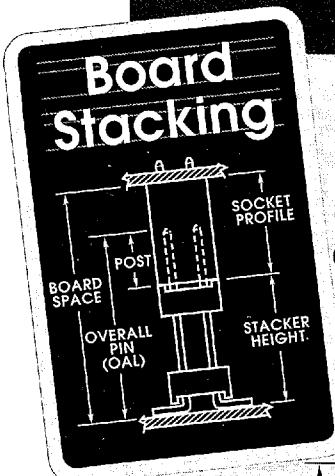


Available with optional end shrouds and pick-and-place pads

APPLICATION SPECIFIC OPTION

Alignment pins, end shrouds, and end shrouds with guide posts available. Call Samtec.

Note: This Series is non-standard, non-returnable.



02 thru 50

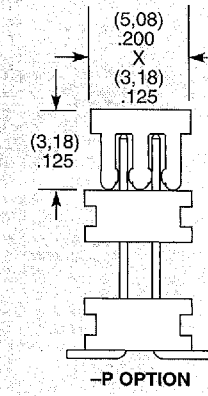
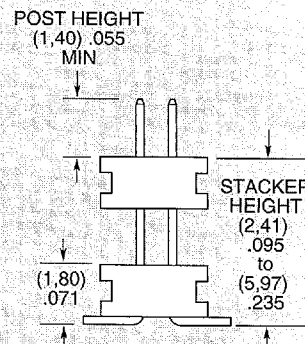
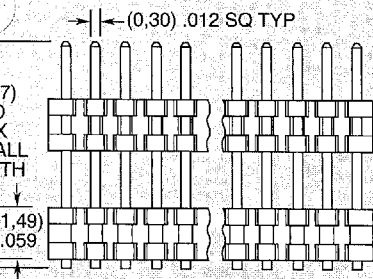
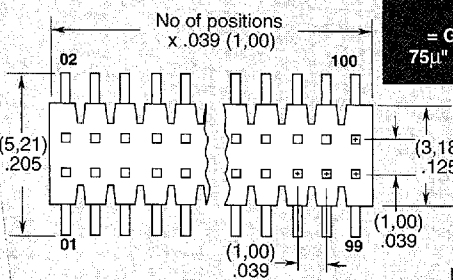
-L
= 10µ" (0,25µm) Gold on post
75µ" (1,91µm) Tin on tail

-F
= Gold flash on post
75µ" (1,91µm) Tin on tail

-'XXX'
= Stacker Height (in inches)
(2,41) .095 to (6,48) .255
Example: -255 = (6,48mm) .255"

-'XXX'
= Post Height (in inches)
(1,40) .055 Minimum
Example: -055 = (1,40) .055"

-P
= Pick & Place Pad



D 12F 7964149 0002054 41T

Note: Due to technical progress, all designs, specifications and components are subject to change without notice.