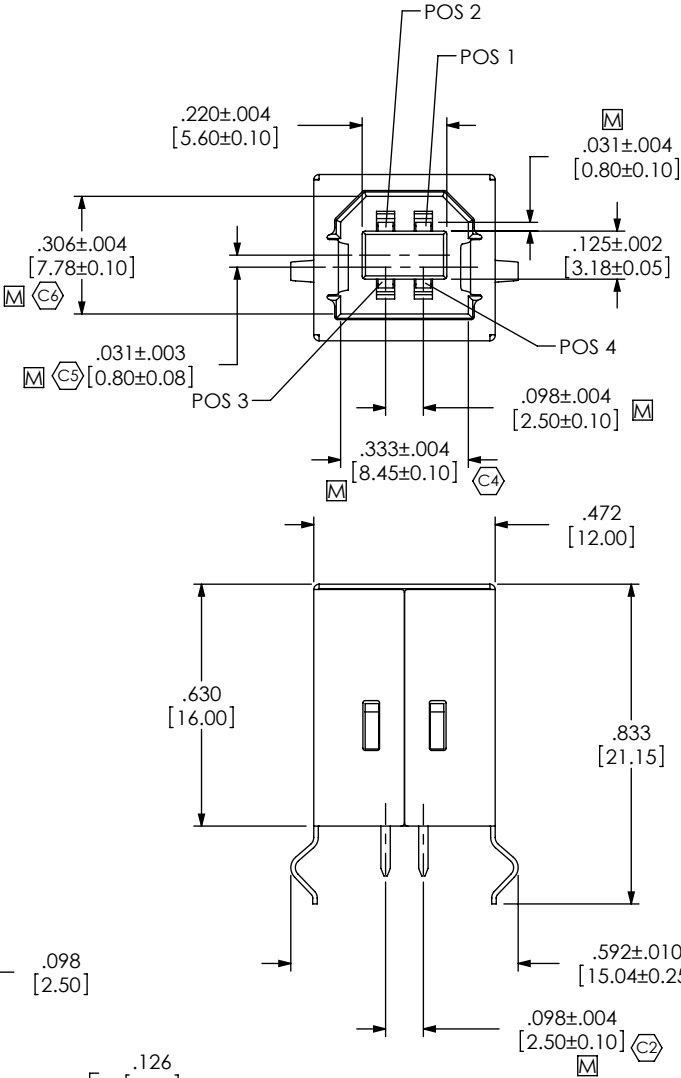


DO NOT  
SCALE FROM  
THIS PRINT

- NOTES:
- 1. Ⓢ REPRESENTS A CRITICAL DIMENSION.
  - 2. VERIFY -S PLATING, VISUALLY CHECK -F ONLY.
  - 3. RoHS PARTS HAVE MATTE TIN ON TAILS.



PLATING  
-F: GOLD FLASH ON MATING AREA,  
MATTE TIN ON TAIL.  
W/ NICKEL UNDERPLATE (SEE NOTE 3 FOR -R)  
-S: .000030" GOLD ON , MATING AREA,  
MATTE TIN ON TAIL.  
W/ NICKEL UNDERPLATE (SEE NOTE 3 FOR -R)

CONFIGURATION  
-S: SINGLE

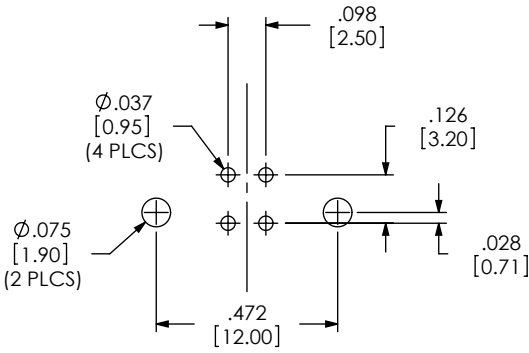
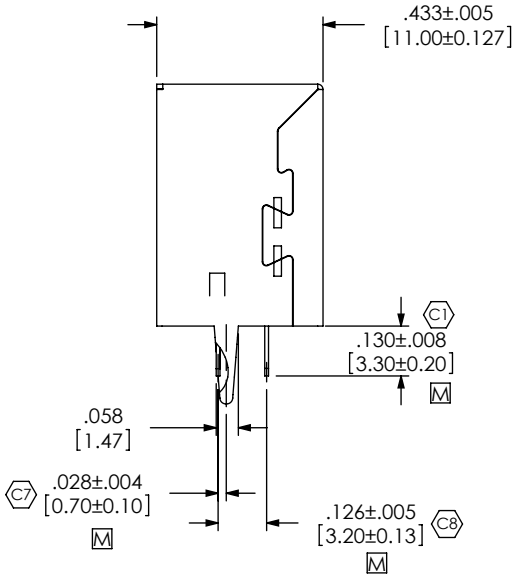
USB-B-S-X-X-VT-X

TYPE  
-B

EI OPTION  
-R: RoHS COMPLIANT -  
LEAD FREE WITH HIGH TEMP INSULATOR

RA TERMINATION  
-VT: VERTICAL THRU HOLE

COLOR  
-B: BLACK  
-W: WHITE



RECOMMENDED PCB LAYOUT

UNLESS OTHERWISE SPECIFIED,  
DIMENSIONS ARE IN INCHES.  
TOLERANCES ARE:  
DECIMALS ANGLES  
.X: ±.01 [.3]  
.XX: ±.005 [.13]  
.XXX: ±.005 [.13]

PROPRIETARY NOTE  
THIS DOCUMENT CONTAINS INFORMATION  
CONFIDENTIAL AND PROPRIETARY TO  
SAMTEC, INC. AND SHALL NOT BE REPRODUCED  
OR TRANSFERRED TO OTHER DOCUMENTS OR  
DISCLOSED TO OTHERS OR USED FOR ANY  
PURPOSE OTHER THAN THAT WHICH IT WAS  
OBTAINED WITHOUT THE EXPRESSED WRITTEN  
CONSENT OF SAMTEC, INC.



520 PARK EAST BLVD, NEW ALBANY, IN 47150  
PHONE: 812-944-6733 FAX: 812-948-5047  
e-Mail: info@SAMTEC.com code: 55322

MATERIAL: DO NOT SCALE DRAWING  
INSULATOR: PBT (RATED UL 94V-0)  
CONTACT OR TERMINAL: PHOS BRONZE  
BACK SHIELD: NICKEL PLATED PHOS BRONZE  
FRONT SHIELD: TIN PLATED PHOS BRONZE  
MAX FLASH ALLOWED: .051  
MAX GATE VESTIGE: .051

SHEET SCALE: 2:1

DESCRIPTION:  
USB B, SINGLE, VERTICAL THOUGH HOLE

DWG. NO. USB-B-S-X-X-VT-X