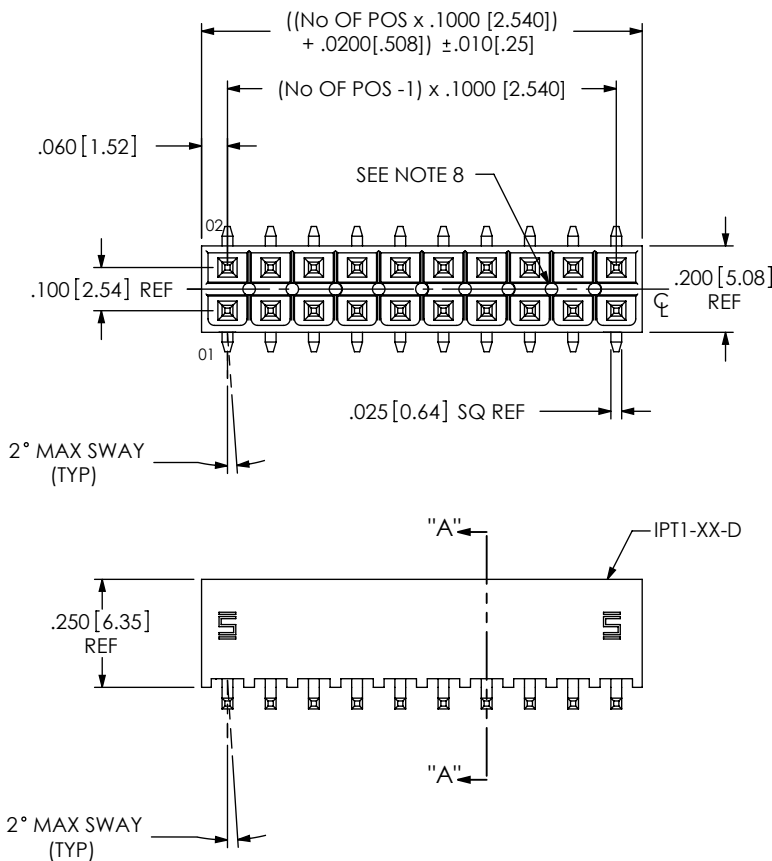
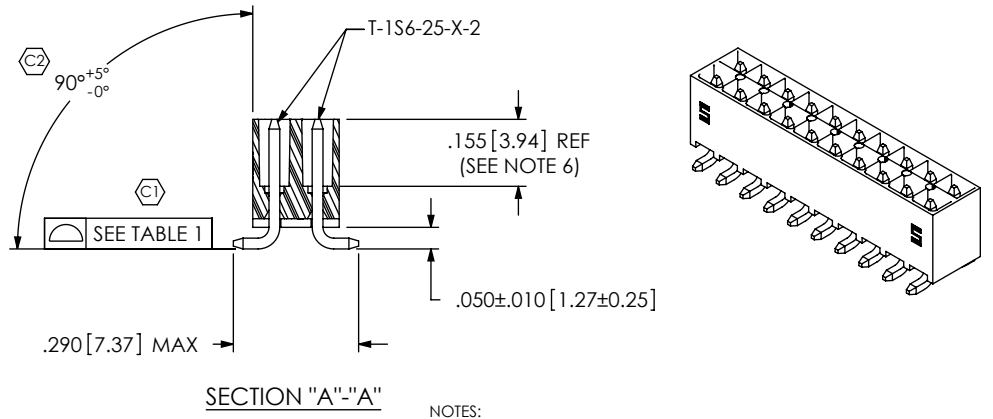


DO NOT SCALE FROM THIS PRINT



IPT1-1XX-XX-XX-D-VS-XX-XX **W**

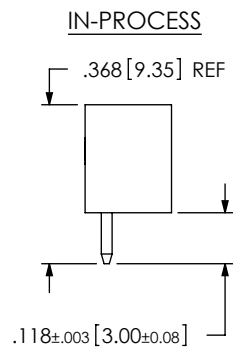
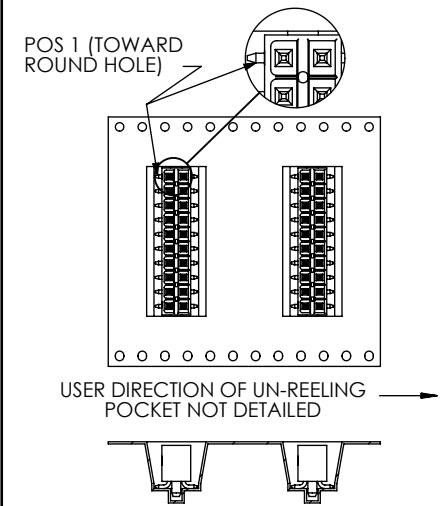
- No OF POS PER ROW
-02 THRU -25
- LEAD STYLE
-01
- PLATING SPECIFICATION
-S: SELECTIVE, 30 Au / 50 Ni MIN ON CONTACT, MATTE TIN TAIL
-SM: SELECTIVE, 30 Au / 50 Ni MIN ON CONTACT, MATTE TIN TAIL
-L: LIGHT SELECTIVE, 10 Au / 50 Ni MIN ON CONTACT, MATTE TIN TAIL
- OPTION
-K: POLYIMIDE FILM PAD [AVAILABLE ON POSITIONS -03 THRU -25 ONLY]
-TR: TAPE AND REEL
- OPTION
-A: ALIGNMENT PIN (USE SM-A11) [4 POS MIN]
-LC: LOCKING CLIP (USE LC-07-TM) [4 POS MIN] (SEE NOTE 10)
-FL: FRICTION LOCK [POS -05 THRU -25] (USE IPT1-XX-D-FL-X & T-1S64-05-X)
W -PL: POSITION #1 REMOVED (USE IPT1-XX-D-P) (SEE NOTE 12)
- TAIL OPTION
-VS: VERTICAL SURFACE MOUNT
- ROW SPECIFICATION
-D: DOUBLE (USE IPT1-XX-D) (SEE NOTE 11)



- NOTES:
- ⊕ REPRESENTS A CRITICAL DIMENSION.
 - MAXIMUM ALLOWABLE CUT FLASH: .010[.25].
 - MINIMUM TERMINAL PUSH OUT FORCE: 2 lbs.
 - MAXIMUM VARIATION BETWEEN PIN ROWS: .005[.13].
 - "END WALLS" AFTER CUTTING SHOULD BE .010+/- .003[.25+/- .08].
 - PINS TO BE FLUSH TO .008 [.20] MAXIMUM RECESSED IN BODY.
 - ALL DIMENSIONS TO BE ABOUT CENTERLINE WITHIN +/- .005[.13].
 - PRESENCE OF VOIDS IS OPTIONAL AND PATTERN TO WHICH THEY OCCUR IS VARIABLE.
 - NOTE DELETED.
 - DUE TO THE HIGH AMOUNT OF INSERTION FORCE NEEDED, THE -LC OPTION IS NOT COMPATIBLE WITH AUTO PLACEMENT. SAMTEC RECOMMENDS MANUAL PLACEMENT FOR ALL ASSEMBLIES WITH THE -LC OPTION.
 - STANDARD BODIES CAN BE CUT TO POSITION. FOR -LC, -FL & -PL OPTIONS, BODIES MUST BE MOLDED TO POSITION.
 - FOR EXISTING CUSTOMERS ONLY, -POL CAN BE SUBSTITUTED FOR -PL.

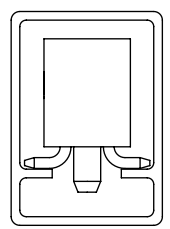
POSITION	COPLANARITY
-02 THRU -10	.005[.13]
-11 THRU -25	.006[.15]

-TR: TAPE & REEL PACKAGING OPTION



PACKAGING VIEW

[-02 POSITION TO BE BULK PACKAGED]



TUBE: PT-1-24-01-103
PLUG: TP-09

UNLESS OTHERWISE SPECIFIED, DIMENSIONS ARE IN INCHES. TOLERANCES ARE:
DECIMALS ANGLES
.XX: ±.01[.3] ± 2°
.XXX: ±.005[.13]
.XXX: ±.0020[.051]

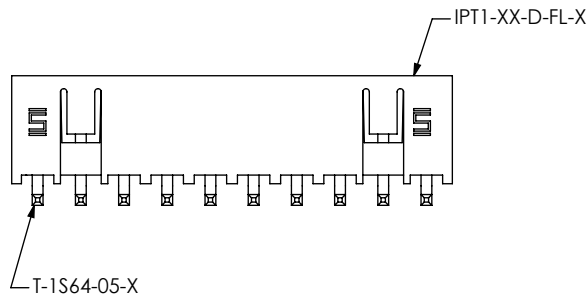
PROPRIETARY NOTE
THIS DOCUMENT CONTAINS INFORMATION CONFIDENTIAL AND PROPRIETARY TO SAMTEC, INC. AND SHALL NOT BE REPRODUCED OR TRANSFERRED TO OTHER DOCUMENTS OR DISCLOSED TO OTHERS OR USED FOR ANY PURPOSE OTHER THAN THAT WHICH IT WAS OBTAINED WITHOUT THE EXPRESSED WRITTEN CONSENT OF SAMTEC, INC.

520 PARK EAST BLVD, NEW ALBANY, IN 47150
PHONE: 812-944-6733 FAX: 812-948-5047
e-Mail info@SAMTEC.com code 55322

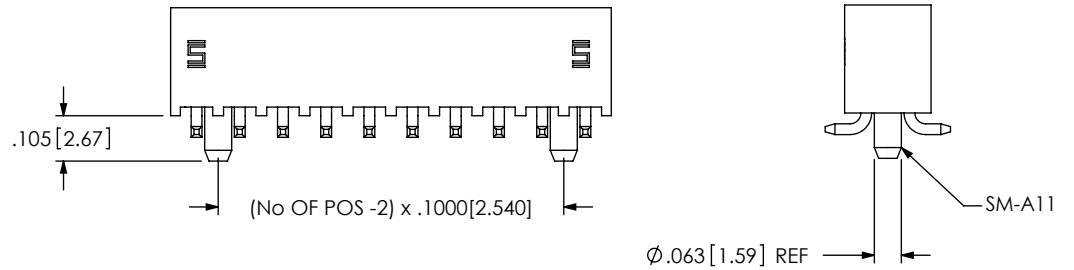
MATERIAL: DO NOT SCALE DRAWING SHEET SCALE: 2.25:1
INSULATOR: LCP, UL 94 VO, COLOR: BLACK
CONTACT: PHOS BRONZE, 510, 3/4 HARD

DESCRIPTION:
.100 DOUBLE ROW SHROUDED TERMINAL ASSEMBLY
DWG. NO.
IPT1-1XX-XX-XX-D-VS-XX-XX

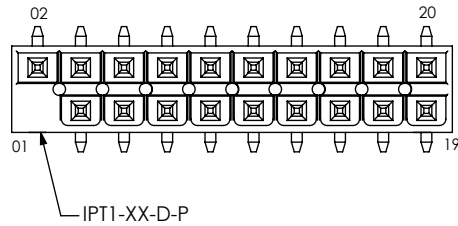
-FL: FRICTION LOCK OPTION
IPT1-110-01-X-D-VS-FL SHOWN



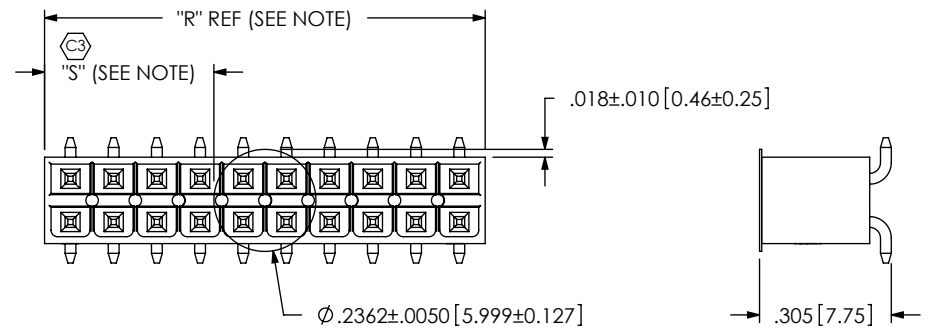
-A: ALIGNMENT PIN OPTION
IPT1-110-01-X-D-VS-A SHOWN



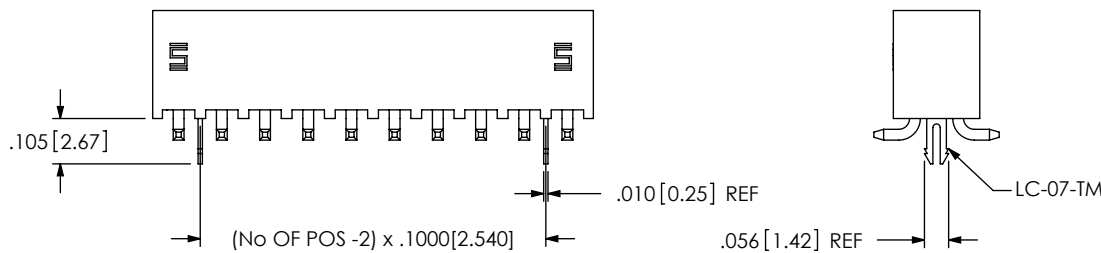
-PL: POLARIZED OPTION
IPT1-110-01-X-D-VS-PL SHOWN



-K: POLYIMIDE FILM PAD OPTION
[AVAILABLE ON POSITIONS -03 THRU -25 ONLY]



-LC: LOCKING CLIP OPTION
IPT1-110-01-X-D-VS-LC-FL SHOWN



NOTE: "R" = USE MEASURED DIMENSION
"S" = $(("R" - .2362[6.000]) / 2) \pm .020[.51]$

PROPRIETARY NOTE
THIS DOCUMENT CONTAINS INFORMATION CONFIDENTIAL AND PROPRIETARY TO SAMTEC, INC. AND SHALL NOT BE REPRODUCED OR TRANSFERRED TO OTHER DOCUMENTS OR DISCLOSED TO OTHERS OR USED FOR ANY PURPOSE OTHER THAN THAT WHICH IT WAS OBTAINED WITHOUT THE EXPRESSED WRITTEN CONSENT OF SAMTEC, INC.

DO NOT SCALE DRAWING

SHEET SCALE: 2.25:1

samtec

520 PARK EAST BLVD, NEW ALBANY, IN 47150
PHONE: 812-944-6733 FAX: 812-948-5047
e-Mail: info@SAMTEC.com code 55322

DESCRIPTION:
.100 DOUBLE ROW SHROUDED TERMINAL ASSEMBLY

DWG. NO.
IPT1-1XX-XX-XX-D-VS-XX-XX

BY: DEAN P 11-06-2002 SHEET 2 OF 2