

DO NOT
SCALE FROM
THIS PRINT

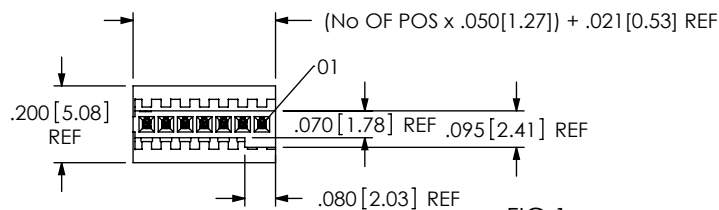
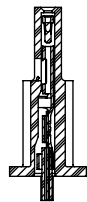
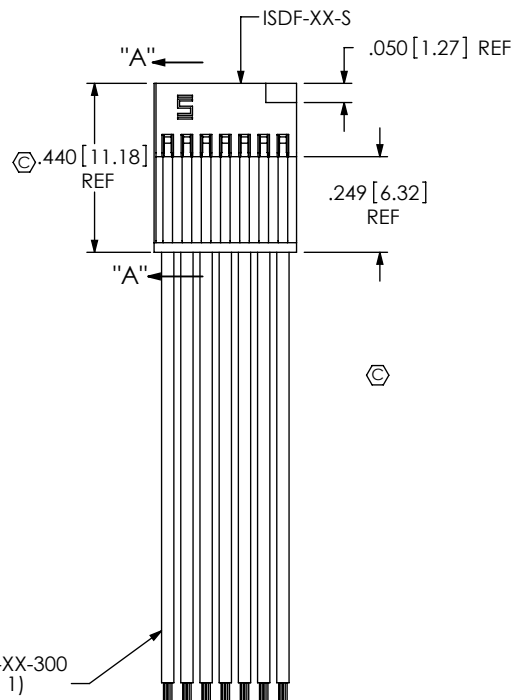


FIG 1
-S: SINGLE END
(SFSSX-07-28-X-XX.XX-S SHOWN)



SECTION "A"-"A"

TABLE 1

SERIES	WIRE GAUGE	DWCX-XX-XX-300
SFSS-XX-XXX-XX-XX-XX-XXX	28 AWG	DWC-28-XX-300
SFSS-XX-XXX-XX-XX-XX-XXX	30 AWG	DWC-30-XX-300
SFSST-XX-XXX-XX-XX-XX-XXX	28 AWG	DWCT-28-XX
SFSST-XX-XXX-XX-XX-XX-XXX	30 AWG	DWCT-30-XX

NOTES:

1. © REPRESENTS A CRITICAL DIMENSION.
2. MINIMUM PULLOUT FORCE: 3.0 LBS [13.3 N].
3. CONTACT MUST BE INSERTED UNTIL RETENTION FEATURE LOCKS INTO PLACE.
4. ALL FINISHED GOODS ARE TO BE ELECTRICAL TESTED INCLUDING HI-POT TEST AT 1000 VOLTS DC. AFTER FINAL ELECTRICAL TEST, LABEL EACH ASSEMBLY WITH 1 LABEL-ET.
5. TINNED COPPER WIRE IS ROHS COMPLIANT.
6. PARTS TO BE LAYER PACKAGED.
7. END OF DISCRETE WIRE MUST BE IN THE RANGE AFTER CRIMP.
8. FOR LENGTHS LESS THAN 12 IN, TOLERANCE SHALL BE +/- .125.
9. REFER TO CRIMP SPECIFICATIONS PRINT FOR CRIMP AND STRIP DIMENSIONS, TOLERANCES, TOOLING, AND ITS REQUIREMENTS.
10. COLOR CODED CABLE NOT AVAILABLE WITH SFSST (FEP).

SFSSX-XX-XXX-XX-XX.XX-XX-XXX			
FEP CABLE OPTION	-T: FEP INSULATION	-NXX OPTION (END 2)	(ONLY AVAILABLE WITH -D, -DR)
LEAVE BLANK FOR STANDARD PVC INSULATION		-NUS: NOTCH UP, STRAIGHT (PIN 1 TO PIN 7)	
No OF POSITIONS	-02 THRU -50	-NDS: NOTCH DOWN, STRAIGHT (PIN 1 TO PIN 1)	
WIRE GAUGE (AWG)	-28 -30	END OPTION	(END OPTION COMBINATIONS NOT AVAILABLE)
COLOR CODE:		-S: SINGLE END	
LEAVE BLANK FOR ALL BLACK WIRE		-D: DOUBLE END	
C: COLOR CODED WIRE, SEE COLOR SEQUENCE TABLE, SHEET 3 (SEE NOTE 10)		(MUST CHOOSE FROM -NXX OPTIONS)	
PLATING SPECIFICATION (VALUES GIVEN ARE IN MICRO INCHES)		-SR: SINGLE ENDED WITH RETENTION LATCH (SEE SHEET 3, FIG 3)(USE SUB-IM-LTC-07-01-N) (ONLY AVAILABLE ON -02 THRU -50 POS)	
-H: HEAVY GOLD, 30 Au / 50 Ni MIN ON CONTACT, 3 Au / 50 Ni MIN ON TAIL		-DR: DOUBLE ENDED WITH RETENTION LATCH (SEE SHEET 3, FIG 4)(USE SUB-IM-LTC-07-01-N) (ONLY AVAILABLE ON -02 THRU -50 POS)	
-G: GOLD, 10 Au / 50 Ni MIN ON CONTACT, 3 Au / 50 Ni MIN ON TAIL		(MUST CHOOSE FROM -NXX OPTIONS)	
-F: FLASH SELECTIVE, 3 Au / 50 Ni MIN ON CONTACT, 3 Au / 50 Ni MIN ON TAIL		ASSEMBLED LENGTH SPECIFY IN INCHES	
** -GF: FLASH SELECTIVE, 3 Au / 50 Ni MIN ON CONTACT, 3 Au / 50 Ni MIN ON TAIL (SEE TABLE 2, SHEET 3)		(SINGLE END: 03.00 INCH [76.2mm] MINIMUM, DOUBLE END: 03.25 INCH [82.6mm] MINIMUM)	

** -GF ONLY AVAILABLE TO EXISTING CUSTOMERS SEE -F PLATING

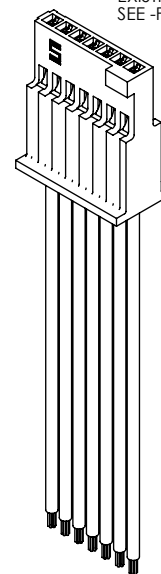
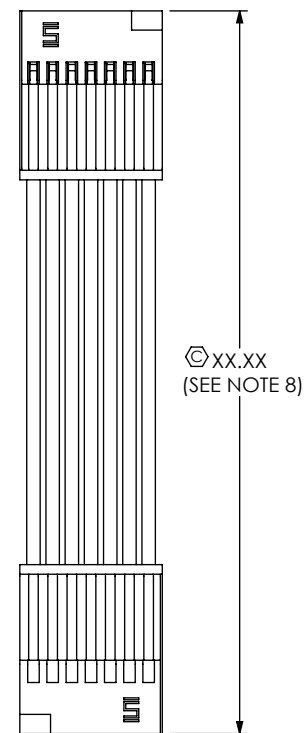


FIG 2
-D: DOUBLE END
(SFSSX-07-28-X-XX.XX-D-NUS SHOWN)
(SAME AS FIG 1, UNLESS OTHERWISE STATED)



© XX.XX
(SEE NOTE 8)

UNLESS OTHERWISE SPECIFIED, DIMENSIONS ARE IN INCHES. TOLERANCES ARE:

DECIMALS ANGLES
.XX: ±.01 [.3]
.XXX: ±.005 [.13]
.XXXX: ±.0020 [.051]

PROPRIETARY NOTE

THIS DOCUMENT CONTAINS INFORMATION CONFIDENTIAL AND PROPRIETARY TO SAMTEC, INC. AND SHALL NOT BE REPRODUCED OR TRANSFERRED TO OTHER DOCUMENTS OR DISCLOSED TO OTHERS OR USED FOR ANY PURPOSE OTHER THAN THAT WHICH IT WAS OBTAINED WITHOUT THE EXPRESSED WRITTEN CONSENT OF SAMTEC, INC.

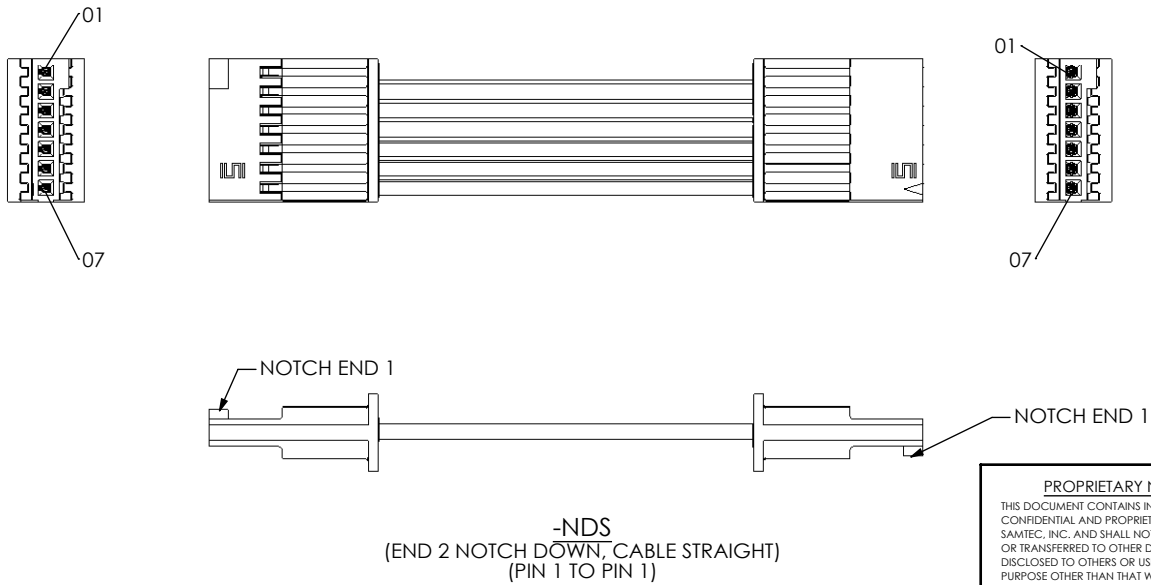
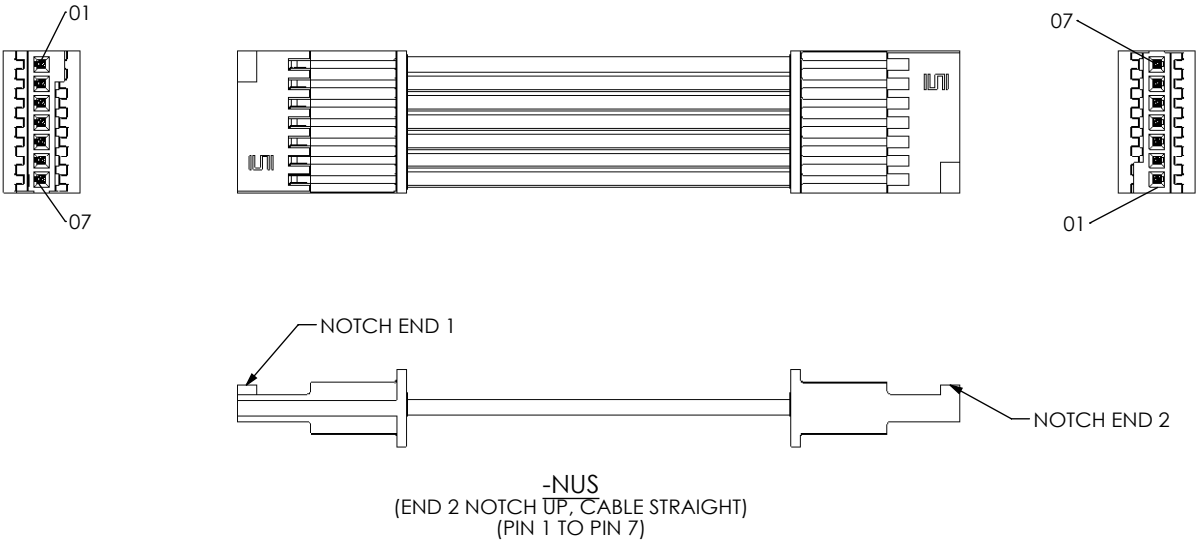
MATERIAL: DO NOT SCALE DRAWING SHEET SCALE: 2:1
INSULATOR: LCP, COLOR: BLACK
CONTACT: BeCu
CABLE INSULATION: PVC OR FEP
WIRE: DWC: TINNED COPPER, DWCT: SILVER PLATED SPOPPER (SEE TABLE 1)

F:\DWG\MISC\MKTG\SFSSX-XX-XXX-XX-XX-XX-XXX-MKT-SLTDRAW

DESCRIPTION:
.050[1.27] SOCKET DISCRETE CABLE ASSEMBLY
DWG. NO.
SFSSX-XX-XXX-XX-XX.XX-XX-XXX
BY: GAYNOR 6/12/2008 SHEET 1 OF 3

samtec

520 PARK EAST BLVD, NEW ALBANY, IN 47150
PHONE: 812-944-6733 FAX: 812-948-5047
e-Mail: info@SAMTEC.com code 55322



<p>PROPRIETARY NOTE THIS DOCUMENT CONTAINS INFORMATION CONFIDENTIAL AND PROPRIETARY TO SAMTEC, INC. AND SHALL NOT BE REPRODUCED OR TRANSFERRED TO OTHER DOCUMENTS OR DISCLOSED TO OTHERS OR USED FOR ANY PURPOSE OTHER THAN THAT WHICH IT WAS OBTAINED WITHOUT THE EXPRESSED WRITTEN CONSENT OF SAMTEC, INC.</p> <p>DO NOT SCALE DRAWING</p> <p>SHEET SCALE: 1:0.571429</p>		<p>samtec</p> <p>520 PARK EAST BLVD, NEW ALBANY, IN 47150 PHONE: 812-944-6733 FAX: 812-948-5047 e-Mail info@SAMTEC.com code 55322</p>	
<p>DESCRIPTION: .050[1.27] SOCKET DISCRETE CABLE ASSEMBLY</p>		<p>DWG. NO. SFSSX-XX-XXX-XX-XX.XX-XX-XXX</p>	
<p>BY: GAYNOR 6/12/2008</p>		<p>SHEET 2 OF 3</p>	

FIG 3
 -SR: SINGLE END WITH RETENTION LATCH
 (SFSSX-05-28-X-XX.XX-SR SHOWN)
 (ONLY AVAILABLE ON -02 THRU -50 POS)
 (SAME AS FIG 1, UNLESS OTHERWISE STATED)

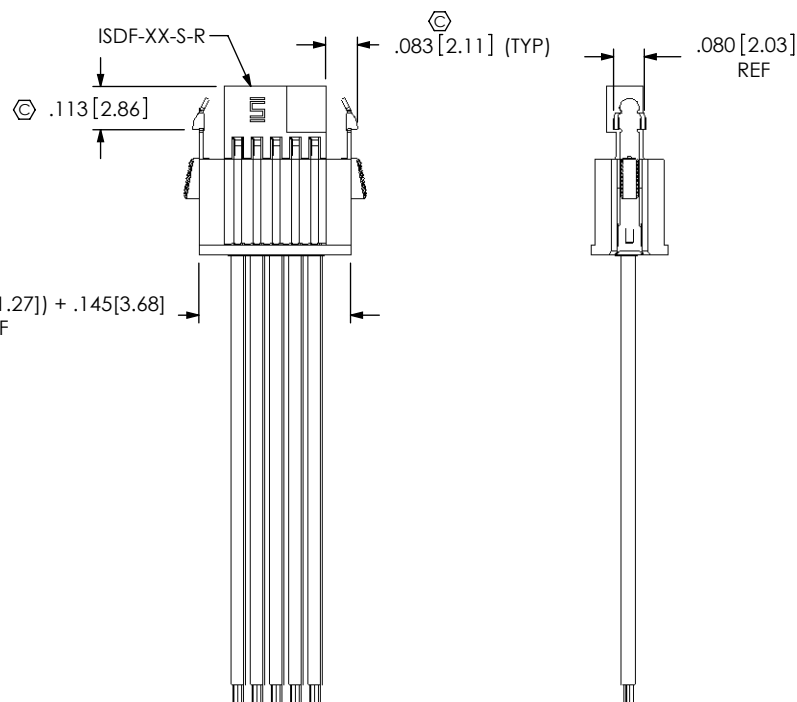


FIG 4
 -DR: DOUBLE END WITH RETENTION LATCH
 (SFSSX-05-28-X-XX.XX-DR SHOWN)
 (ONLY AVAILABLE ON -02 THRU -50 POS)
 (SAME AS FIG 1, UNLESS OTHERWISE STATED)

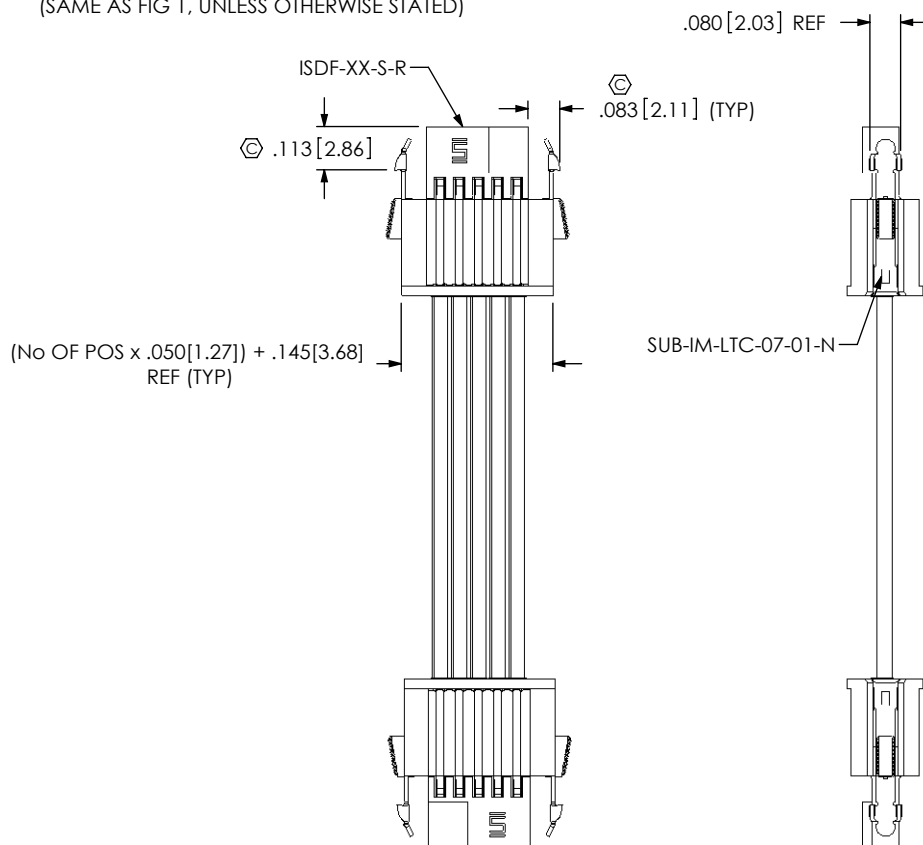


TABLE 2: PLATING

PLATING	CONTACT
-H	C-203-2830-H or CC03X-2830-01-H
-GF	C-203-2830-GF or CC03X-2830-01-GF
-G	C-203-2830-G or CC03X-2830-01-G
-F	C-203-2830-GF or CC03X-2830-01-GF

SFSS color coded wire sequence (SEE NOTE 10)

	COLOR									
	brown	red	orange	yellow	dk green	violet	gray	white	black	dk blue
pin #	1	2	3	4	5	6	7	8	9	10
	11	12	13	14	15	16	17	18	19	20
	21	22	23	24	25	26	27	28	29	30

F:\DWG\MISC\MKTG\SFSSX-XX-XXX-XX-XX-XX-XXX-MKT.SLDDRW

PROPRIETARY NOTE

THIS DOCUMENT CONTAINS INFORMATION
 CONFIDENTIAL AND PROPRIETARY TO
 SAMTEC, INC. AND SHALL NOT BE REPRODUCED
 OR TRANSFERRED TO OTHER DOCUMENTS OR
 DISCLOSED TO OTHERS OR USED FOR ANY
 PURPOSE OTHER THAN THAT WHICH IT WAS
 OBTAINED WITHOUT THE EXPRESSED WRITTEN
 CONSENT OF SAMTEC, INC.

DO NOT SCALE DRAWING

SHEET SCALE: 4:1



520 PARK EAST BLVD, NEW ALBANY, IN 47150
 PHONE: 812-944-6733 FAX: 812-948-5047
 e-Mail: info@SAMTEC.com code 55322

DESCRIPTION:
 .050 [1.27] SOCKET DISCRETE CABLE ASSEMBLY

DWG. NO.
SFSSX-XX-XXX-XX-XX.XX-XX-XXX

BY: GAYNOR 6/12/2008 SHEET 3 OF 3