

T-1R7-02-G

T-1R1-G

T, S SERIES

MACHINED TERMINALS & SOCKETS

Mates with:
SC, SK, SP

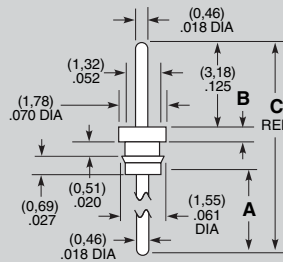
**Specifications:
T, S**

All T and S Series are available with a choice of Gold or Tin plating. Add -G or -T as a suffix to the part number shown.

- G Plating:**
Au over 50µ" (1,27µm) Ni
- T Plating:**
Sn over 50µ" (1,27µm) Ni or 100µ" (2,54µm) Cu
- Current Rating:**
1 A except T-1S6 is 5 A

RECOMMENDED PC HOLE SIZE:	
LEAD SIZE	HOLE SIZE
(0,46) .018 DIA	(0,61) .024 DIA
(0,51) .020 DIA	(0,66) .026 DIA
(0,64) .025 DIA	(0,79) .031 DIA
(0,76) .030 DIA	(0,91) .036 DIA
(0,89) .035 DIA	(1,04) .041 DIA
(1,14) .045 DIA	(1,30) .051 DIA
(1,32) .052 DIA	(1,47) .058 DIA
(0,46) .018 SQ	(0,76) .030 DIA
(0,64) .025 SQ	(1,02) .040 DIA
(1,14) .045 SQ	(1,75) .069 DIA
(0,20) .008 x (0,71) .028	(0,89) .035 DIA
(0,25) .010 x (0,51) .020	(0,71) .028 DIA
(0,41) .016 x (0,51) .020	(0,79) .031 DIA
(0,41) .016 x (0,61) .024	(0,89) .035 DIA
(0,41) .016 x (0,79) .031	(1,04) .041 DIA

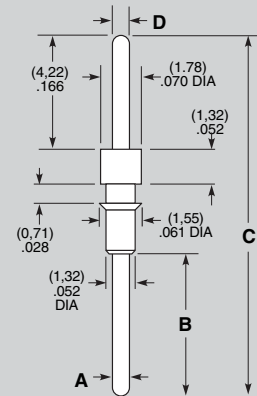
T-1R6-, T-3R6-



Part No.	A TAIL	B HEAD	C OAL
T-1R6-	(2,74) .108	(0,51) .020	(7,62) .300
T-3R6-	(0,89) .035	(0,76) .030	(5,97) .235

Material: Brass
-G = 20µ" (0,51µm) Gold
-T = 200µ" (5,08µm) Tin

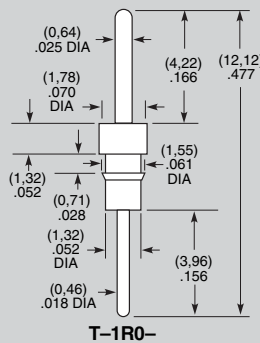
T-1R7-



Part No.	A DIA	B TAIL	C OAL	D DIA
T-1R7-01	(0,64) .025			
T-1R7-02	(0,89) .035	(5,33) .210	(13,46) .530	(0,64) .025
T-1R7-03	(1,14) .045			

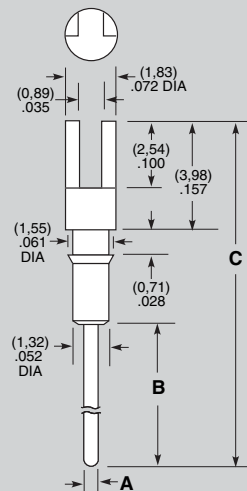
Material: Brass
-G = 10µ" (0,25µm) Gold
-T = 200µ" (5,08µm) Tin

T-1R0-



Material: Brass
-G = 20µ" (0,51µm) Gold
-T = 200µ" (5,08µm) Tin

T-1R2-, T-1R9-

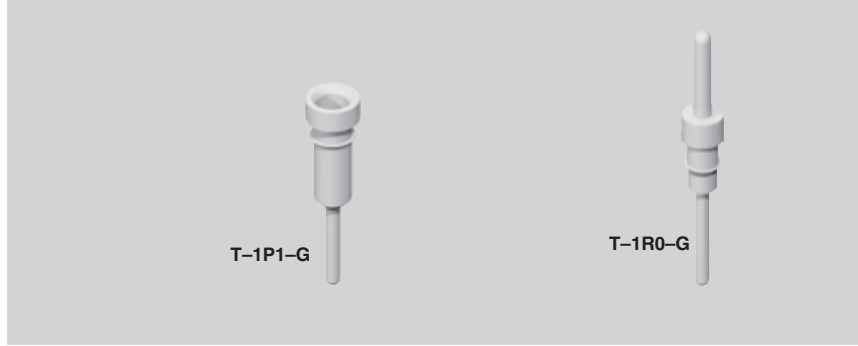


Part No.	A DIA	B TAIL	C OAL
T-1R2-	(0,46) .018	(3,96) .156	(10,57) .416
T-1R9-1-	(0,64) .025	(5,33) .210	(11,94) .470
T-1R9-2-	(0,89) .035		

Material: Brass
-G = 10µ" (0,25µm) Gold (T-1R9-)
-G = 20µ" (0,51µm) Gold (T-1R2-)
-T = 200µ" (5,08µm) Tin

Note:
Some sizes, styles and options are non-standard, non-returnable.

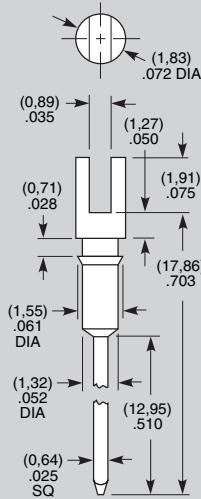
Due to technical progress, all designs, specifications and components are subject to change without notice.



T, S SERIES

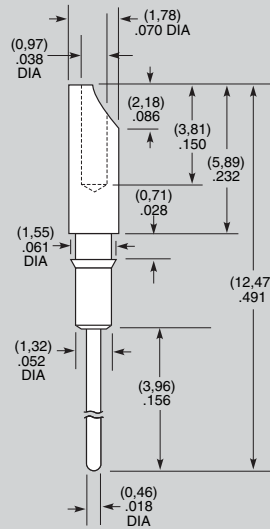
MACHINED TERMINALS & SOCKETS

T-1S5-



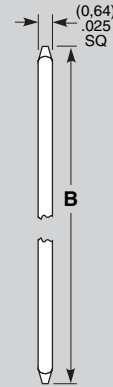
Material: Brass
 -G = 20µ (0.51µm) Gold
 -T = 200µ (5.08µm) Tin

T-1R1-



Material: Brass
 -G = 20µ (0.51µm) Gold
 -T = 200µ (5.08µm) Tin

T-1S6-

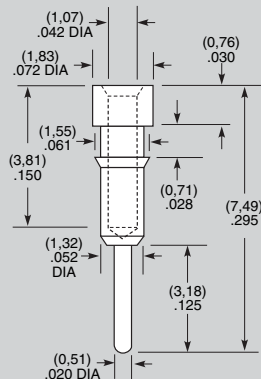


PART NO.	B
T-1S6-07-X-2	(10.92) .430
T-1S6-08-X-2	(13.46) .530
T-1S6-09-X-2	(18.54) .730
T-1S6-10-X-2	(21.08) .830
T-1S6-11-X-2	(23.62) .930
T-1S6-12-X-2	(26.16) 1.030
T-1S6-13-X-2	(31.24) 1.230
T-1S6-14-X-2	(36.32) 1.430
T-1S6-15-X-2	(41.40) 1.630
T-1S6-16-X-2	(46.48) 1.830
T-1S6-17-X-2	(51.56) 2.030
T-1S6-18-X-2	(56.64) 2.230
T-1S6-19-X-2	(61.72) 2.430
T-1S6-20-X-2	(66.80) 2.630
T-1S6-21-X-2	(71.88) 2.830

Pins are supplied on a bandolier.

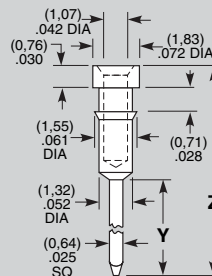
Material: Phosphor Bronze
 X = Plating option (specify G or T)
 -G = 10µ (0.25µm) Gold on .165" (4.19mm) contact area. Gold flash on balance
 -T = 200µ (5.08µm) Tin

S-1P1-



Material: Brass
 -G = 10µ (0.25µm) Gold
 -T = 200µ (5.08µm) Tin

S-1W1-



Material: Brass
 -G = 10µ (0.25µm) Gold
 -T = 200µ (5.08µm) Tin

Part No.	Y ±.010	Z ±.015
S-1W1-1-	(12.95) .510	(17.86) .703
S-1W1-2-	(9.14) .360	(14.05) .553
S-1W1-3-	(6.60) .260	(11.51) .453

Due to technical progress, all designs, specifications and components are subject to change without notice.

WWW.SAMTEC.COM