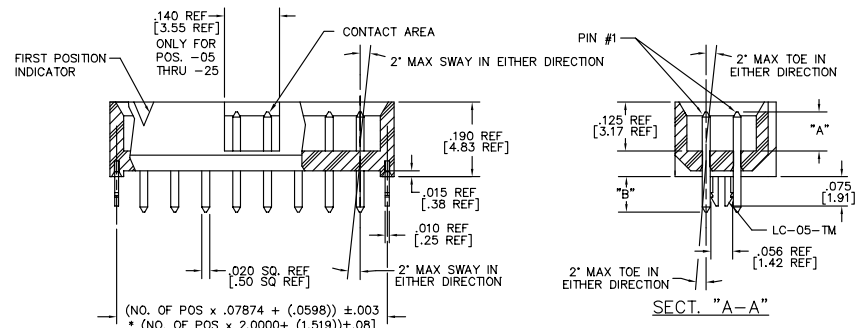


THROUGH HOLE FIG. 1

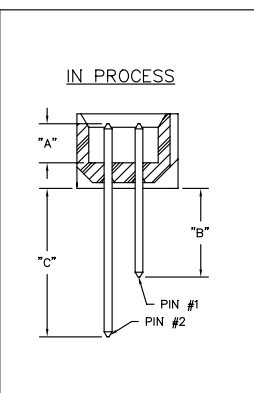
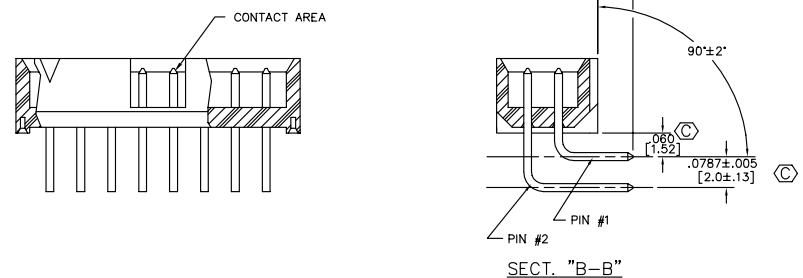
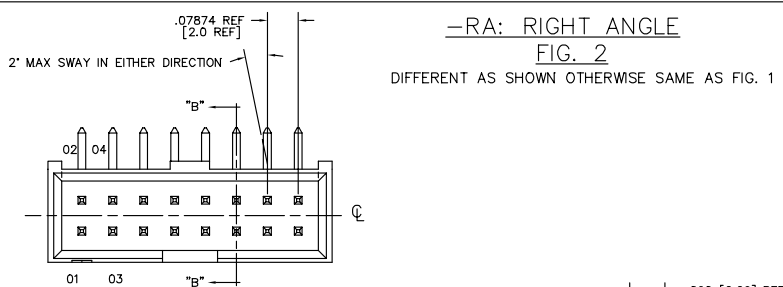


LTMM-108-XX-XX-D-LC SHOWN

- LTMM-1XX-XX-XX-D-XX-XX
- NO. OF POSITIONS -02 THRU -25
- TERMINAL STYLE
- 01: .100[2.54] POST HEIGHT (STANDARD)
 - 02: .120[3.05] POST HEIGHT (SEE TABLE 1)
- POLARIZED OPTION XX INDICATES POS. TO BE OMITTED
- OPTION
- RA: RIGHT ANGLE (SEE FIG 2 -RA & TABLE 1)
 - SM: SURFACE MOUNT (SEE FIG 3 -SM & TABLE 1)
 - LC: LOCKING CLIP (USE LC-05-TM FOR THROUGH HOLE STYLE, SEE FIG 1) (USE LC-07-TM FOR -SM STYLE, SEE FIG 3)
 - L: LIGHT SELECTIVE (USE T-1S13-XX-L-2)
 - F: FLASH GOLD SELECTIVE (USE T-1S13-XX-F-2)
 - H: HEAVY GOLD (USE T-1S13-XX-H-2)
 - SM: HEAVY GOLD SELECTIVE, MATTE TIN TAIL (USE T-1S13-XX-S-2)
 - TM: MATTE TIN (USE T-1S13-XX-T-2)
 - LM: LIGHT GOLD SELECTIVE, MATTE TIN TAIL (USE T-1S13-XX-L-2)
 - FM: FLASH GOLD SELECTIVE, MATTE TIN TAIL (USE T-1S13-XX-F-2)
- PLATING SPECIFICATIONS
- G: GOLD (USE T-1S13-XX-G-2)
 - T: TIN (USE T-1S13-XX-T-2)
 - S: SELECTIVE (USE T-1S13-XX-S-2)
 - L: LIGHT SELECTIVE (USE T-1S13-XX-L-2)
 - F: FLASH GOLD SELECTIVE (USE T-1S13-XX-F-2)
 - H: HEAVY GOLD (USE T-1S13-XX-H-2)
 - SM: HEAVY GOLD SELECTIVE, MATTE TIN TAIL (USE T-1S13-XX-S-2)
 - TM: MATTE TIN (USE T-1S13-XX-T-2)
 - LM: LIGHT GOLD SELECTIVE, MATTE TIN TAIL (USE T-1S13-XX-L-2)
 - FM: FLASH GOLD SELECTIVE, MATTE TIN TAIL (USE T-1S13-XX-F-2)
- ROW SPECIFICATION
- D: DOUBLE (USE LTMM-XX-D-LC)

TABLE 1

	LEAD STYLE	"A"	"B" REF	"C" REF	PIN #1	PIN #2
THROUGH HOLE (SEE FIG. 1)	-01	.100 [2.54]	.090 [2.3]	N/A	T-1S13-04-X-2	N/A
	-02	.120 [3.05]	.117 [3.0]	N/A	T-1S13-07-X-2	N/A
RIGHT ANGLE (SEE FIG. 2)	-01	.100 [2.5]	.232 [5.9]	.390 [9.9]	T-1S13-05-X-2	T-1S13-06-X-2
	-02	.120 [3.0]	.228 [5.8]	.386 [9.8]	T-1S13-19-X-2	T-1S13-22-X-2
SURFACE MOUNT (SEE FIG. 3)	-01	.100 [2.54]	.172 [4.4]	N/A	T-1S13-07-X-2	N/A
	-02	.120 [3.05]	.173 [4.4]	N/A	T-1S13-20-X-2	N/A



T-1S13-XX-X-2	LEAD LENGTH		
-14	.614	15.6 mm	
-15	.714	18.1 mm	
-02	.377	9.6 mm	
-03	.535	13.6 mm	
-04	.255	6.5 mm	
-05	.397	10.1 mm	
-06	.555	14.1 mm	
-07	.302	7.7 mm	
-08	.476	12.1 mm	
-09	.594	15.1 mm	
-10	.673	17.1 mm	
-11	.751	19.1 mm	
-12	.830	21.1 mm	
-13	.456	11.6 mm	
-16	.614	15.6 mm	
-17	.693	17.6 mm	
-18	.851	21.6 mm	
-19	.413	10.5 mm	
-20	.323	8.2 mm	
-21	.323	8.2 mm	
-22	.571	14.5 mm	
-23	.771	19.6 mm	
-24	.928	23.6 mm	
-25	.643	16.3 mm	

- NOTES:
- MAX PIN ROTATION IN BODY TO BE 2'.
 - PUSHOUT FORCE TO BE 1 lb. MIN.
 - ⊙ REPRESENTS CRITICAL DIMS.
 - DIMENSIONS IN [] ARE IN MILLIMETERS.
 - FOR LOCKING CLIPS: 12 OZ. MIN. RETENTION
 - MUST BE MEASURED AT BEND.

INSULATOR: DUPONT ZYTEL HTNFR52G30NH
 COLOR: BLACK
 TERMINAL: PHOSPHER BRONZE



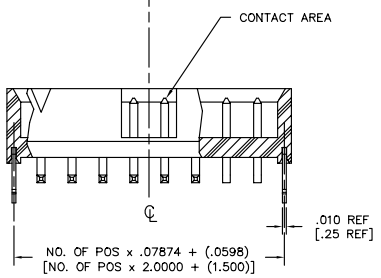
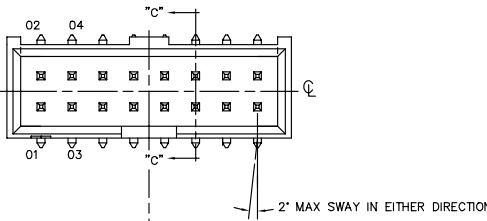
520 PARK EAST BLVD. NEW ALBANY, INDIANA 47150
 PHONE (812) 944-6733 P.O. BOX 1147
 CODE 55322

PROPRIETARY NOTE
 THIS DOCUMENT CONTAINS INFORMATION CONFIDENTIAL AND PROPRIETARY TO SAMTEC INC. AND SHALL NOT BE REPRODUCED OR TRANSFERRED TO OTHER DOCUMENTS OR DISCLOSED TO OTHERS OR USED FOR ANY PURPOSE OTHER THAN THAT FOR WHICH IT WAS OBTAINED WITHOUT THE EXPRESSED WRITTEN CONSENT OF SAMTEC INC.

DIMENSIONS ARE IN INCHES		UNLESS OTHERWISE NOTED	TOLERANCES ARE:
ONE PLACE DECIMALS ±.1[2.5]	THREE PLACE DECIMALS ±.005[.13]	ANGLES	± 1°
TWO PLACE DECIMALS ±.01[.25]	FOUR PLACE DECIMALS ±.0010[.051]		

TITLE: LTMM ASSEMBLY

DWG NO: LTMM-1XX-XX-XX-D-XX-XX
SHEET 2 OF 3



-SM: SURFACE MOUNT
FIG. 3

DIFFERENT AS SHOWN OTHERWISE SAME AS FIG. 1
LTMM-108-XX-XX-D-SM-LC SHOWN

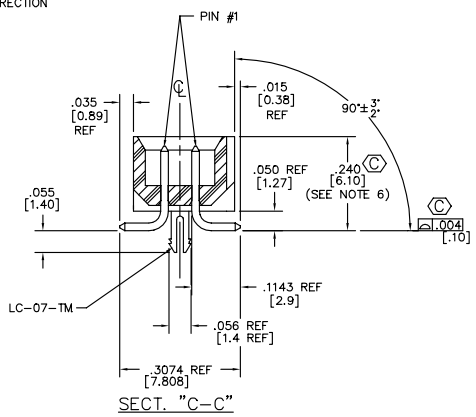
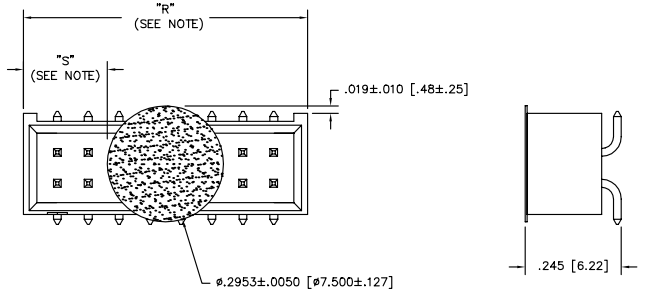
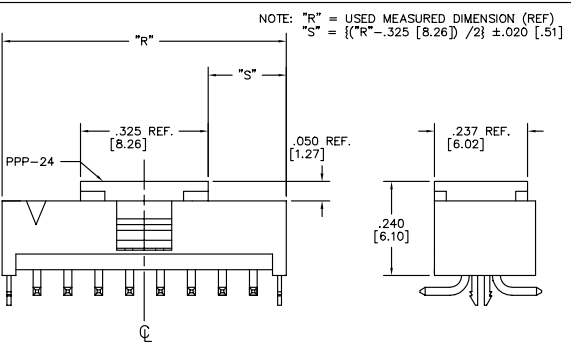


FIG. 6
-K OPTION (POLYAMIDE FILM)
FOR SURFACE MOUNT OPTIONS ONLY



NOTE: "R" = USED MEASURED DIMENSION (REF)
"S" = {("R" - .2953 [7.500]) / 2} ± .020 [0.51]



-P: PICK AND PLACE PAD
FIG. 4

DIFFERENT AS SHOWN OTHERWISE SAME AS FIG. 1
LTMM-108-XX-XX-D-SM-LC SHOWN
FOR SURFACE MOUNT OPTIONS ONLY

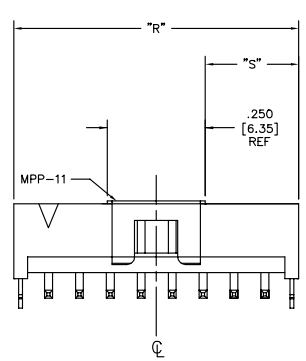
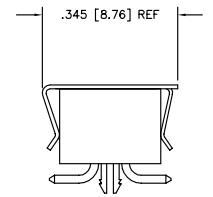


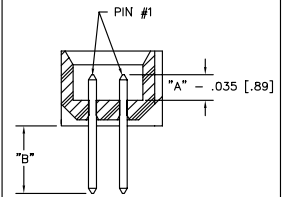
FIG. 5

-M: METAL PICK AND PLACE PAD
-SM OPTION ONLY
DIFFERENT AS SHOWN OTHERWISE SAME AS FIG. 1
LTMM-108-XX-XX-D-SM-LC SHOWN

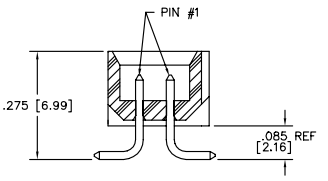
NOTE: "R" = USED MEASURED DIMENSION (REF)
"S" = {("R" - .250 [6.35]) / 2} ± .020 [0.51]



IN PROCESS 1



IN PROCESS 2



PROPRIETARY NOTE
THIS DOCUMENT CONTAINS INFORMATION CONFIDENTIAL AND PROPRIETARY TO SAMTEC INC. AND SHALL NOT BE REPRODUCED OR TRANSMITTED TO OTHER DOCUMENTS OR DISCLOSED TO OTHERS OR USED FOR ANY PURPOSE OTHER THAN THAT FOR WHICH IT WAS OBTAINED WITHOUT THE EXPRESSED WRITTEN CONSENT OF SAMTEC INC.

EXISPROD\ASSEMBLY\2MM
LTMMASM2

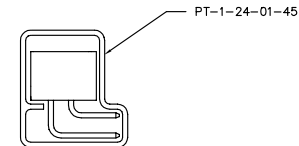
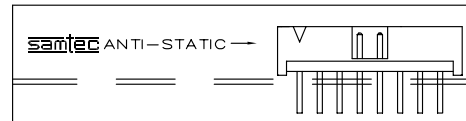
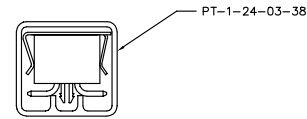
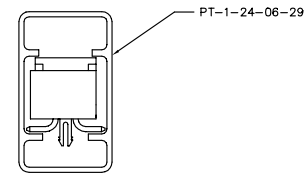
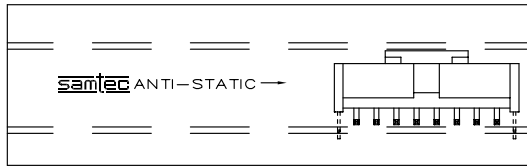
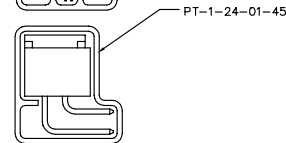
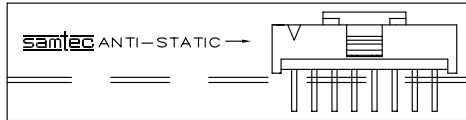
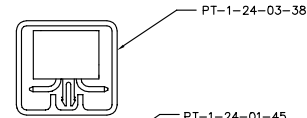
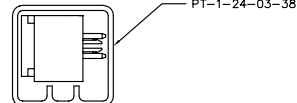
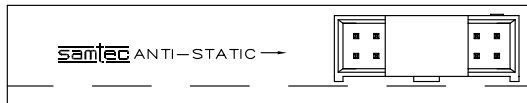
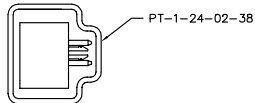
520 PARK EAST BLVD. NEW ALBANY, INDIANA 47150
PHONE (812) 944-6733 P.O. BOX 1147
CODE 55322

MADE BY: BRATCHER 2-11-94

LTMM-1XX-XX-XX-D-XX-XX
SHEET 2 OF 3

REV. AG

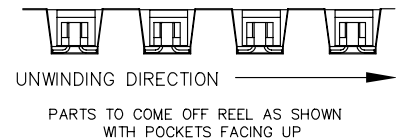
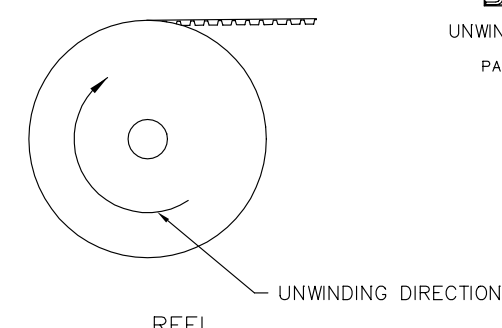
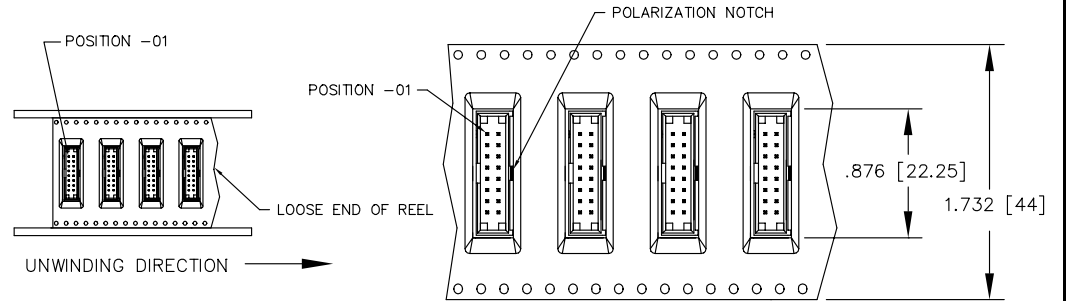
PACKAGING



UNLESS OTHERWISE NOTED
 DIMENSIONS ARE IN INCHES TOLERANCES ARE:
 ONE PLACE DECIMALS ±.1[2.5] THREE PLACE DECIMALS ±.005[.13]
 TWO PLACE DECIMALS ±.01[.25] FOUR PLACE DECIMALS ±.0010[.051]
 ANGLES ± 1°

TITLE: LTMM ASSEMBLY

DWG NO: LTMM-1XX-XX-XX-D-XX-XX
 SHEET 3 OF 3



TAPE & REEL
 FIG. 7
 SCALE: .375x

TABLE 2		
OPTIONS	PACKAGING TUBE	PLUG
-, -LC	PT-1-24-02-38	TP-03
-P, -LC-P	PT-1-24-03-38	TP-03
-SM, -SM-LC -SM-M	PT-1-24-03-38	TP-03
-SM-P	PT-1-24-03-38	TP-09
-SM-LC-P	PT-1-24-06-29	TP-07
-RA	PT-1-24-01-45	TP-03
-RA-P	PT-1-24-01-45	TP-03

PROPRIETARY NOTE
 THIS DOCUMENT CONTAINS INFORMATION CONFIDENTIAL AND PROPRIETARY TO SAMTEC INC. AND SHALL NOT BE REPRODUCED OR TRANSFERRED TO OTHER DOCUMENTS OR DISCLOSED TO OTHERS OR USED FOR ANY PURPOSE OTHER THAN THAT FOR WHICH IT WAS OBTAINED WITHOUT THE EXPRESSED WRITTEN CONSENT OF SAMTEC INC.

EXISPROD\ASSEMBLY\2MM
 LTMMAS3

520 PARK EAST BLVD. NEW ALBANY, INDIANA 47150
 PHONE (812) 944-6733 P.O. BOX 1147
 CODE 55322

MADE BY: BRATCHER 2-11-94

LTMM-1XX-XX-XX-D-XX-XX
 SHEET 3 OF 3