

-----Original Message-----

From: Richard Cornell [<mailto:Richard.Cornell@samtec.com>]

Sent: Friday, November 07, 2008 1:12 PM

To: CustEN

Subject: Samtec Engineering Change Notification - Drawings Attached

<<Cad.zip>>

ECN Number: 99781

Part #: QSH-XXX-XX-X-D-DP-XXX

Date of Change: 11/03/08

ECN Changes:

END VIEW, UNDER C-126-21-X AND LEADER, ADD \*SEE NOTE 11. ADD NOTE 11:

FOR

-080, -100 POSITIONS USE C-269-01-X. DO NOT SUB C-126. PLATING OPTIONS,

CHG

C-126-21-X TO C-126-21-X \* SEE NOTE 11.

PROPRIETARY NOTE:

The enclosed documents contain information confidential and proprietary to

Samtec, Inc. and shall not be reproduced or transferred to other documents

or disclosed to others without the expressed written consent of Samtec, Inc.

- <SAMTEC\_PCN\_PARTS\_AFFECTED>  
<PART NAME="QSH-020-01-F-D-DP" />  
<PART NAME="QSH-020-01-F-D-DP-A" />  
<PART NAME="QSH-020-01-F-D-DP-A-K" />  
<PART NAME="QSH-020-01-F-D-DP-A-K-TR" />  
<PART NAME="QSH-020-01-F-D-DP-A-K-TR-.H" />  
<PART NAME="QSH-020-01-F-D-DP-A-RT1" />  
<PART NAME="QSH-020-01-F-D-DP-A-RT1-.F/H" />  
<PART NAME="QSH-020-01-F-D-DP-A-TR" />  
<PART NAME="QSH-020-01-F-D-DP-LC" />  
<PART NAME="QSH-020-01-H-D-DP-A" />  
<PART NAME="QSH-020-01-H-D-DP-A-.F/H" />  
<PART NAME="QSH-020-01-H-D-DP-A-K" />  
<PART NAME="QSH-020-01-H-D-DP-A-K-.F/H" />  
<PART NAME="QSH-020-01-H-D-DP-A-K-TR" />  
<PART NAME="QSH-020-01-H-D-DP-A-RT1" />  
<PART NAME="QSH-020-01-H-D-DP-A-RT1-.F/H" />  
<PART NAME="QSH-020-01-H-D-DP-A-RT1-K" />  
<PART NAME="QSH-020-01-H-D-DP-A-TR" />  
<PART NAME="QSH-020-01-H-D-DP-EM2-.F/H" />  
<PART NAME="QSH-020-01-L-D-DP" />  
<PART NAME="QSH-020-01-L-D-DP-A" />  
<PART NAME="QSH-020-01-L-D-DP-A-.F/H" />  
<PART NAME="QSH-020-01-L-D-DP-A-FL" />  
<PART NAME="QSH-020-01-L-D-DP-A-FL-.F/H" />  
<PART NAME="QSH-020-01-L-D-DP-A-FL-K" />  
<PART NAME="QSH-020-01-L-D-DP-A-FL-K-TR" />  
<PART NAME="QSH-020-01-L-D-DP-A-K" />  
<PART NAME="QSH-020-01-L-D-DP-A-K-TR" />  
<PART NAME="QSH-020-01-L-D-DP-A-RT1-K" />  
<PART NAME="QSH-020-01-L-D-DP-A-TR" />  
<PART NAME="QSH-020-01-L-D-DP-A-TY" />  
<PART NAME="QSH-020-01-L-D-DP-EM2" />  
<PART NAME="QSH-020-01-L-D-DP-GP" />  
<PART NAME="QSH-020-01-L-D-DP-K" />  
<PART NAME="QSH-020-01-L-D-DP-TR" />  
<PART NAME="QSH-030-01-C-D-A" />  
<PART NAME="QSH-030-01-D-03-A" />  
<PART NAME="QSH-030-01-F-D" />  
<PART NAME="QSH-030-01-F-D-A" />  
<PART NAME="QSH-030-01-F-D-A-FL" />  
<PART NAME="QSH-030-01-F-D-A-GP-K" />  
<PART NAME="QSH-030-01-F-D-A-K" />  
<PART NAME="QSH-030-01-F-D-A-K-.K" />  
<PART NAME="QSH-030-01-F-D-A-K-TR" />  
<PART NAME="QSH-030-01-F-D-A-K-TY" />  
<PART NAME="QSH-030-01-F-D-A-RT1" />  
<PART NAME="QSH-030-01-F-D-A-RT1-.F/H" />  
<PART NAME="QSH-030-01-F-D-A-TR" />  
<PART NAME="QSH-030-01-F-D-EM2" />  
<PART NAME="QSH-030-01-F-D-K" />  
<PART NAME="QSH-030-01-F-D-LC" />

<PART NAME="QSH-030-01-F-D-TR" />  
<PART NAME="QSH-030-01-F-D-TY" />  
<PART NAME="QSH-030-01-H-D-A" />  
<PART NAME="QSH-030-01-H-D-A-.F/H" />  
<PART NAME="QSH-030-01-H-D-A-.R" />  
<PART NAME="QSH-030-01-H-D-A-FL-.F/H" />  
<PART NAME="QSH-030-01-H-D-A-FL-K" />  
<PART NAME="QSH-030-01-H-D-A-FL-K-TR" />  
<PART NAME="QSH-030-01-H-D-A-K" />  
<PART NAME="QSH-030-01-H-D-A-K-TR" />  
<PART NAME="QSH-030-01-H-D-A-K-TR-.R" />  
<PART NAME="QSH-030-01-H-D-A-RT1" />  
<PART NAME="QSH-030-01-H-D-A-RT1-.F/H" />  
<PART NAME="QSH-030-01-H-D-A-RT1-K" />  
<PART NAME="QSH-030-01-H-D-A-TR" />  
<PART NAME="QSH-030-01-H-D-A-TY" />  
<PART NAME="QSH-030-01-H-D-EM2" />  
<PART NAME="QSH-030-01-H-D-EM2-.F/H" />  
<PART NAME="QSH-030-01-L-D" />  
<PART NAME="QSH-030-01-L-D-A" />  
<PART NAME="QSH-030-01-L-D-A-.F/H" />  
<PART NAME="QSH-030-01-L-D-A-FL" />  
<PART NAME="QSH-030-01-L-D-A-FL-.F/H" />  
<PART NAME="QSH-030-01-L-D-A-FL-K" />  
<PART NAME="QSH-030-01-L-D-A-FL-K-TR" />  
<PART NAME="QSH-030-01-L-D-A-GP" />  
<PART NAME="QSH-030-01-L-D-A-K" />  
<PART NAME="QSH-030-01-L-D-A-K-TR" />  
<PART NAME="QSH-030-01-L-D-A-K-TR-.BP" />  
<PART NAME="QSH-030-01-L-D-A-K-TR-.JAB" />  
<PART NAME="QSH-030-01-L-D-A-K-TR-.JBL" />  
<PART NAME="QSH-030-01-L-D-A-K-TY" />  
<PART NAME="QSH-030-01-L-D-A-LC" />  
<PART NAME="QSH-030-01-L-D-A-RT1" />  
<PART NAME="QSH-030-01-L-D-A-TR" />  
<PART NAME="QSH-030-01-L-D-EM2" />  
<PART NAME="QSH-030-01-L-D-FL-K-TR" />  
<PART NAME="QSH-030-01-L-D-GP" />  
<PART NAME="QSH-030-01-L-D-K" />  
<PART NAME="QSH-030-01-L-D-K-TR" />  
<PART NAME="QSH-030-01-L-D-LC" />  
<PART NAME="QSH-030-01-L-D-LC-K-GP" />  
<PART NAME="QSH-030-01-L-D-TR" />  
<PART NAME="QSH-040-01-F-D-DP" />  
<PART NAME="QSH-040-01-F-D-DP-A" />  
<PART NAME="QSH-040-01-F-D-DP-A-K" />  
<PART NAME="QSH-040-01-F-D-DP-A-K-TR" />  
<PART NAME="QSH-040-01-F-D-DP-A-RT1" />  
<PART NAME="QSH-040-01-F-D-DP-A-RT1-.F/H" />  
<PART NAME="QSH-040-01-F-D-DP-A-TR" />  
<PART NAME="QSH-040-01-F-D-DP-LC" />  
<PART NAME="QSH-040-01-H-D-DP-A" />

<PART NAME="QSH-040-01-H-D-DP-A-.F/H" />  
<PART NAME="QSH-040-01-H-D-DP-A-K" />  
<PART NAME="QSH-040-01-H-D-DP-A-K-TR" />  
<PART NAME="QSH-040-01-H-D-DP-A-RT1" />  
<PART NAME="QSH-040-01-H-D-DP-A-RT1-.F/H" />  
<PART NAME="QSH-040-01-H-D-DP-A-RT1-K-TR" />  
<PART NAME="QSH-040-01-H-D-DP-EM2" />  
<PART NAME="QSH-040-01-H-D-DP-EM2-.F/H" />  
<PART NAME="QSH-040-01-L-D-DP-A" />  
<PART NAME="QSH-040-01-L-D-DP-A-.F/H" />  
<PART NAME="QSH-040-01-L-D-DP-A-K" />  
<PART NAME="QSH-040-01-L-D-DP-A-K-TR" />  
<PART NAME="QSH-040-01-L-D-DP-A-K-TR-.JBL" />  
<PART NAME="QSH-040-01-L-D-DP-A-RT1" />  
<PART NAME="QSH-040-01-L-D-DP-A-TR" />  
<PART NAME="QSH-040-01-L-D-DP-GP" />  
<PART NAME="QSH-060-01-C-D-A-K" />  
<PART NAME="QSH-060-01-F-D" />  
<PART NAME="QSH-060-01-F-D-A" />  
<PART NAME="QSH-060-01-F-D-A-.DOTHILL" />  
<PART NAME="QSH-060-01-F-D-A-.F/H" />  
<PART NAME="QSH-060-01-F-D-A-GP" />  
<PART NAME="QSH-060-01-F-D-A-K" />  
<PART NAME="QSH-060-01-F-D-A-K-TR" />  
<PART NAME="QSH-060-01-F-D-A-K-TR-.H" />  
<PART NAME="QSH-060-01-F-D-A-K-TR-.MIC" />  
<PART NAME="QSH-060-01-F-D-A-K-TY" />  
<PART NAME="QSH-060-01-F-D-A-RT1-.F/H" />  
<PART NAME="QSH-060-01-F-D-A-TR" />  
<PART NAME="QSH-060-01-F-D-A-TR-.DOTHIL" />  
<PART NAME="QSH-060-01-F-D-A-TY" />  
<PART NAME="QSH-060-01-F-D-DP-A" />  
<PART NAME="QSH-060-01-F-D-DP-A-K" />  
<PART NAME="QSH-060-01-F-D-DP-A-RT1" />  
<PART NAME="QSH-060-01-F-D-DP-A-RT1-.F/H" />  
<PART NAME="QSH-060-01-F-D-DP-A-TR" />  
<PART NAME="QSH-060-01-F-D-DP-EM2" />  
<PART NAME="QSH-060-01-F-D-DP-K" />  
<PART NAME="QSH-060-01-F-D-EM2" />  
<PART NAME="QSH-060-01-F-D-GP" />  
<PART NAME="QSH-060-01-F-D-LC" />  
<PART NAME="QSH-060-01-F-D-LC-K" />  
<PART NAME="QSH-060-01-H-D-A" />  
<PART NAME="QSH-060-01-H-D-A-.F/H" />  
<PART NAME="QSH-060-01-H-D-A-FL-K" />  
<PART NAME="QSH-060-01-H-D-A-FL-TR" />  
<PART NAME="QSH-060-01-H-D-A-K" />  
<PART NAME="QSH-060-01-H-D-A-K-TR" />  
<PART NAME="QSH-060-01-H-D-A-RT1" />  
<PART NAME="QSH-060-01-H-D-A-RT1-.F/H" />  
<PART NAME="QSH-060-01-H-D-A-TR" />  
<PART NAME="QSH-060-01-H-D-A-TY" />

<PART NAME="QSH-060-01-H-D-DP-A" />  
<PART NAME="QSH-060-01-H-D-DP-A-.F/H" />  
<PART NAME="QSH-060-01-H-D-DP-A-GP-K" />  
<PART NAME="QSH-060-01-H-D-DP-A-K" />  
<PART NAME="QSH-060-01-H-D-DP-A-RT1" />  
<PART NAME="QSH-060-01-H-D-DP-A-RT1-.F/H" />  
<PART NAME="QSH-060-01-H-D-DP-EM2" />  
<PART NAME="QSH-060-01-H-D-DP-EM2-.F/H" />  
<PART NAME="QSH-060-01-H-D-EM2" />  
<PART NAME="QSH-060-01-H-D-EM2-.F/H" />  
<PART NAME="QSH-060-01-H-D-K-TR" />  
<PART NAME="QSH-060-01-H-D-LC" />  
<PART NAME="QSH-060-01-L-D" />  
<PART NAME="QSH-060-01-L-D-A" />  
<PART NAME="QSH-060-01-L-D-A-.F/H" />  
<PART NAME="QSH-060-01-L-D-A-.HARDI" />  
<PART NAME="QSH-060-01-L-D-A-FL" />  
<PART NAME="QSH-060-01-L-D-A-FL-K" />  
<PART NAME="QSH-060-01-L-D-A-GP" />  
<PART NAME="QSH-060-01-L-D-A-K" />  
<PART NAME="QSH-060-01-L-D-A-K-TR" />  
<PART NAME="QSH-060-01-L-D-A-K-TR-.CLS" />  
<PART NAME="QSH-060-01-L-D-A-K-TR-.JAB" />  
<PART NAME="QSH-060-01-L-D-A-K-TR-.JBL" />  
<PART NAME="QSH-060-01-L-D-A-K-TR-.XYR" />  
<PART NAME="QSH-060-01-L-D-A-K-TY" />  
<PART NAME="QSH-060-01-L-D-A-LC" />  
<PART NAME="QSH-060-01-L-D-A-RT1" />  
<PART NAME="QSH-060-01-L-D-A-TR" />  
<PART NAME="QSH-060-01-L-D-DP" />  
<PART NAME="QSH-060-01-L-D-DP-A" />  
<PART NAME="QSH-060-01-L-D-DP-A-.F/H" />  
<PART NAME="QSH-060-01-L-D-DP-A-GP-K-TR" />  
<PART NAME="QSH-060-01-L-D-DP-A-K" />  
<PART NAME="QSH-060-01-L-D-DP-A-K-TR" />  
<PART NAME="QSH-060-01-L-D-DP-A-RT1" />  
<PART NAME="QSH-060-01-L-D-DP-A-TR" />  
<PART NAME="QSH-060-01-L-D-DP-EM2" />  
<PART NAME="QSH-060-01-L-D-DP-LC" />  
<PART NAME="QSH-060-01-L-D-EM2" />  
<PART NAME="QSH-060-01-L-D-K" />  
<PART NAME="QSH-060-01-L-D-K-TR" />  
<PART NAME="QSH-060-01-L-D-K-TY" />  
<PART NAME="QSH-060-01-L-D-LC" />  
<PART NAME="QSH-060-01-L-D-LC-K-TR" />  
<PART NAME="QSH-080-01-F-D-DP-A" />  
<PART NAME="QSH-080-01-F-D-DP-A-K" />  
<PART NAME="QSH-080-01-F-D-DP-LC" />  
<PART NAME="QSH-080-01-H-D-DP-A" />  
<PART NAME="QSH-080-01-H-D-DP-A-.F/H" />  
<PART NAME="QSH-080-01-H-D-DP-A-K" />  
<PART NAME="QSH-080-01-H-D-DP-EM2" />

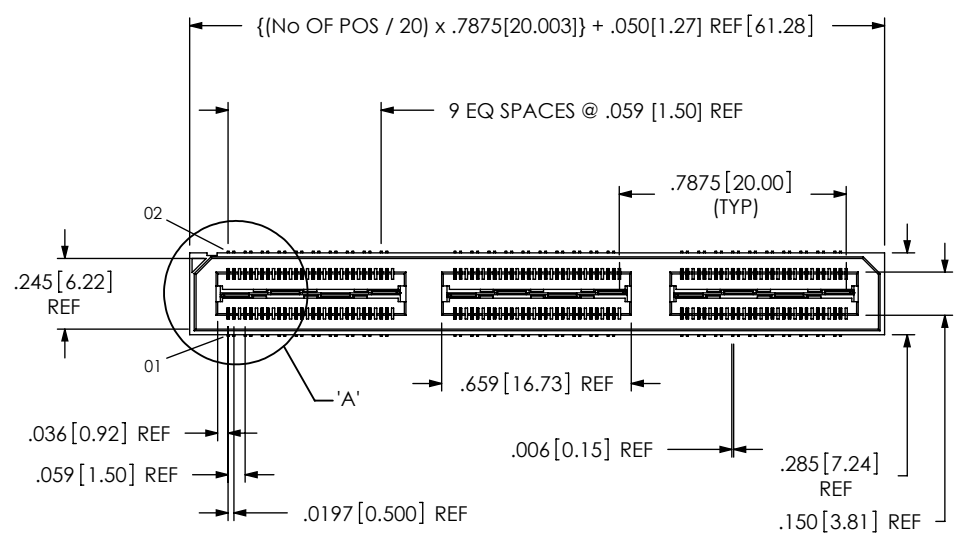
<PART NAME="QSH-080-01-H-D-DP-EM2-.F/H" />  
<PART NAME="QSH-080-01-L-D-DP-A" />  
<PART NAME="QSH-080-01-L-D-DP-A-K" />  
<PART NAME="QSH-080-01-L-D-DP-A-TY" />  
<PART NAME="QSH-080-01-L-D-DP-LC-K" />  
<PART NAME="QSH-090-01-C-D-A-K" />  
<PART NAME="QSH-090-01-F-D" />  
<PART NAME="QSH-090-01-F-D-A" />  
<PART NAME="QSH-090-01-F-D-A-.DOTHILL" />  
<PART NAME="QSH-090-01-F-D-A-GP" />  
<PART NAME="QSH-090-01-F-D-A-K" />  
<PART NAME="QSH-090-01-F-D-A-K-.CLS" />  
<PART NAME="QSH-090-01-F-D-A-K-TR" />  
<PART NAME="QSH-090-01-F-D-A-K-TR-.H" />  
<PART NAME="QSH-090-01-F-D-A-K-TR-.JABIL" />  
<PART NAME="QSH-090-01-F-D-A-K-TR-.MIC" />  
<PART NAME="QSH-090-01-F-D-A-K-TY" />  
<PART NAME="QSH-090-01-F-D-A-RT1" />  
<PART NAME="QSH-090-01-F-D-A-RT1-.F/H" />  
<PART NAME="QSH-090-01-F-D-A-TR" />  
<PART NAME="QSH-090-01-F-D-A-TR-.DOTHIL" />  
<PART NAME="QSH-090-01-F-D-A-TY" />  
<PART NAME="QSH-090-01-F-D-EM2" />  
<PART NAME="QSH-090-01-F-D-K" />  
<PART NAME="QSH-090-01-F-D-LC" />  
<PART NAME="QSH-090-01-F-D-LC-K" />  
<PART NAME="QSH-090-01-H-D-A" />  
<PART NAME="QSH-090-01-H-D-A-.F/H" />  
<PART NAME="QSH-090-01-H-D-A-K" />  
<PART NAME="QSH-090-01-H-D-A-K-.JBL" />  
<PART NAME="QSH-090-01-H-D-A-K-TR" />  
<PART NAME="QSH-090-01-H-D-A-TY" />  
<PART NAME="QSH-090-01-H-D-EM2" />  
<PART NAME="QSH-090-01-H-D-EM2-.F/H" />  
<PART NAME="QSH-090-01-L-D" />  
<PART NAME="QSH-090-01-L-D-A" />  
<PART NAME="QSH-090-01-L-D-A-.F/H" />  
<PART NAME="QSH-090-01-L-D-A-.K" />  
<PART NAME="QSH-090-01-L-D-A-GP" />  
<PART NAME="QSH-090-01-L-D-A-K" />  
<PART NAME="QSH-090-01-L-D-A-K-TR" />  
<PART NAME="QSH-090-01-L-D-A-K-TR-.SLR" />  
<PART NAME="QSH-090-01-L-D-A-LC" />  
<PART NAME="QSH-090-01-L-D-A-TR" />  
<PART NAME="QSH-090-01-L-D-A-TY" />  
<PART NAME="QSH-090-01-L-D-EM2" />  
<PART NAME="QSH-090-01-L-D-K" />  
<PART NAME="QSH-090-01-L-D-LC" />  
<PART NAME="QSH-100-01-F-D-DP-A" />  
<PART NAME="QSH-100-01-F-D-DP-A-K" />  
<PART NAME="QSH-100-01-F-D-DP-A-K-.SPI4" />  
<PART NAME="QSH-100-01-H-D-DP-A" />

<PART NAME="QSH-100-01-H-D-DP-A-GP-K" />  
<PART NAME="QSH-100-01-H-D-DP-A-K" />  
<PART NAME="QSH-100-01-L-D-DP-A" />  
<PART NAME="QSH-100-01-L-D-DP-A-K" />  
<PART NAME="QSH-120-01-F-D" />  
<PART NAME="QSH-120-01-F-D-A" />  
<PART NAME="QSH-120-01-F-D-A-.F/H" />  
<PART NAME="QSH-120-01-F-D-A-K" />  
<PART NAME="QSH-120-01-F-D-A-K-TY" />  
<PART NAME="QSH-120-01-F-D-A-TY" />  
<PART NAME="QSH-120-01-F-D-LC" />  
<PART NAME="QSH-120-01-H-D-A" />  
<PART NAME="QSH-120-01-H-D-A-.F/H" />  
<PART NAME="QSH-120-01-H-D-A-GP" />  
<PART NAME="QSH-120-01-H-D-A-K" />  
<PART NAME="QSH-120-01-H-D-EM2" />  
<PART NAME="QSH-120-01-H-D-EM2-.F/H" />  
<PART NAME="QSH-120-01-L-D" />  
<PART NAME="QSH-120-01-L-D-A" />  
<PART NAME="QSH-120-01-L-D-A-.F/H" />  
<PART NAME="QSH-120-01-L-D-A-GP" />  
<PART NAME="QSH-120-01-L-D-A-K" />  
<PART NAME="QSH-120-01-L-D-A-K-TY" />  
<PART NAME="QSH-120-01-L-D-A-K-TY-.CLS" />  
<PART NAME="QSH-120-01-L-D-A-TY" />  
<PART NAME="QSH-120-01-L-D-EM2" />  
<PART NAME="QSH-120-01-L-D-GP" />  
<PART NAME="QSH-120-01-L-D-LC" />  
<PART NAME="QSH-120-01-L-D-LC-K" />  
<PART NAME="QSH-150-01-F-D-A" />  
<PART NAME="QSH-150-01-F-D-A-K" />  
<PART NAME="QSH-150-01-F-D-EM2" />  
<PART NAME="QSH-150-01-F-D-LC" />  
<PART NAME="QSH-150-01-H-D-A" />  
<PART NAME="QSH-150-01-H-D-A-K" />  
<PART NAME="QSH-150-01-H-D-K" />  
<PART NAME="QSH-150-01-L-D" />  
<PART NAME="QSH-150-01-L-D-A" />  
<PART NAME="QSH-150-01-L-D-A-.F/H" />  
<PART NAME="QSH-150-01-L-D-A-.H" />  
<PART NAME="QSH-150-01-L-D-A-FL" />  
<PART NAME="QSH-150-01-L-D-A-GP" />  
<PART NAME="QSH-150-01-L-D-A-K" />  
<PART NAME="QSH-150-01-L-D-A-K-TY" />  
<PART NAME="QSH-150-01-L-D-EM2" />  
<PART NAME="QSH-150-01-L-D-K" />  
<PART NAME="QSH-20-01-D-DP-01-A" />  
<PART NAME="QSH-20-01-D-DP-02-A" />  
<PART NAME="QSH-20-01-D-DP-03-A" />  
<PART NAME="QSH-20-01-D-DP-04-A" />  
<PART NAME="QSH-20-01-D-DP-05-A" />  
<PART NAME="QSH-30-01-D-01" />

<PART NAME="QSH-30-01-D-01-.CR" />  
<PART NAME="QSH-30-01-D-01-A" />  
<PART NAME="QSH-30-01-D-01-A-.CR" />  
<PART NAME="QSH-30-01-D-01-A-FL" />  
<PART NAME="QSH-30-01-D-01-A-FL-.CR" />  
<PART NAME="QSH-30-01-D-01-A-GP" />  
<PART NAME="QSH-30-01-D-01-A-RT1" />  
<PART NAME="QSH-30-01-D-01-FL" />  
<PART NAME="QSH-30-01-D-01-FL-.CR" />  
<PART NAME="QSH-30-01-D-01-GP" />  
<PART NAME="QSH-30-01-D-02" />  
<PART NAME="QSH-30-01-D-02-.CR" />  
<PART NAME="QSH-30-01-D-02-A" />  
<PART NAME="QSH-30-01-D-02-A-.CR" />  
<PART NAME="QSH-30-01-D-02-A-FL" />  
<PART NAME="QSH-30-01-D-02-A-FL-.CR" />  
<PART NAME="QSH-30-01-D-02-A-GP" />  
<PART NAME="QSH-30-01-D-02-A-RT1" />  
<PART NAME="QSH-30-01-D-02-GP" />  
<PART NAME="QSH-30-01-D-03" />  
<PART NAME="QSH-30-01-D-03-.CR" />  
<PART NAME="QSH-30-01-D-03-A" />  
<PART NAME="QSH-30-01-D-03-A-.CR" />  
<PART NAME="QSH-30-01-D-03-A-FL" />  
<PART NAME="QSH-30-01-D-03-A-GP" />  
<PART NAME="QSH-30-01-D-03-A-RT1" />  
<PART NAME="QSH-30-01-D-03-GP" />  
<PART NAME="QSH-30-01-D-04" />  
<PART NAME="QSH-30-01-D-04-.CR" />  
<PART NAME="QSH-30-01-D-04-A" />  
<PART NAME="QSH-30-01-D-04-A-.CR" />  
<PART NAME="QSH-30-01-D-04-A-FL" />  
<PART NAME="QSH-30-01-D-04-A-GP" />  
<PART NAME="QSH-30-01-D-04-GP" />  
<PART NAME="QSH-30-01-D-05" />  
<PART NAME="QSH-30-01-D-05-.CR" />  
<PART NAME="QSH-30-01-D-05-A" />  
<PART NAME="QSH-30-01-D-05-A-.CR" />  
<PART NAME="QSH-30-01-D-05-A-FL" />  
<PART NAME="QSH-30-01-D-05-A-GP" />  
<PART NAME="QSH-30-01-D-05-GP" />  
<PART NAME="QSH-30-01-D-EM2-01" />  
<PART NAME="QSH-30-01-D-EM2-02" />  
<PART NAME="QSH-30-01-D-EM2-03" />  
<PART NAME="QSH-30-01-D-EM2-04" />  
<PART NAME="QSH-30-01-D-EM2-05" />  
<PART NAME="QSH-30-01-D-EM3-01" />  
<PART NAME="QSH-30-01-D-EM3-03" />  
<PART NAME="QSH-30-01-D-EM3-05" />  
<PART NAME="QSH-SAMPLE-BOARD" />  
</SAMTEC\_PCN\_PARTS\_AFFECTED>



DO NOT SCALE FROM THIS PRINT



QSH-XXX-XX-X-D-DP-XXX

- No OF POSITIONS  
-020, -040, -060, \*\*080, \*\*100 (PER ROW)
- LEAD STYLE  
-01: .1280 [3.251]
- PLATING SPECIFICATION  
-F: FLASH SELECTIVE GOLD WITH MATTE TIN TAILS (USE C-126-21-F / T-1G2-01-F) (SEE NOTE 9)  
-L: LIGHT SELECTIVE GOLD WITH MATTE TIN TAILS (USE C-126-21-L / T-1G2-01-L) (SEE NOTE 9)  
-H: HEAVY GOLD (USE C-126-21-H / T-1G2-01-G)
- C-126-01-X CAN BE SUBBED FOR C-126-21-X
- \* = NOT RELEASED FOR PRODUCTION  
\*\* = SEE NOTE 10
- OPTION  
-A: ALIGNMENT PINS (USE QSH-30-01-D-XX-A, SEE FIG. 2)  
-GP: GUIDE POSTS (USE QSH-30-01-D-XX-GP, SEE FIG. 4)  
-LC: LOCKING CLIPS (USE LC-08-TM-01, SEE FIG. 1)  
-K: POLYIMIDE FILM PAD (USE K-DOT-.325-.450-.005, SEE FIG. 3)  
-TR: TAPE & REEL (60 POS MAX)  
-TY: TRAY PACKAGING (NOT AVAILABLE WITH -TR)  
-FL: FRICTION LOCKS (SEE FIG. 5, SHEET 3) (NOT AVAILABLE WITH -GP)  
-RT1: RETENTION (MUST USE -A OPTION) (USE QSH-30-01-D-XX-A-RT1 & SUB-SC-05-01-FF) (SEE FIG. 6, SHEET 3) (NOT AVAILABLE WITH -LC, -GP, OR -FL) (NOT AVAILABLE WITH -080 & -100 POS)
- DIFFERENTIAL PAIRS  
-D: DOUBLE (USE QSH-30-01-D-XX)
- ROW SPECIFICATION  
No OF BANKS

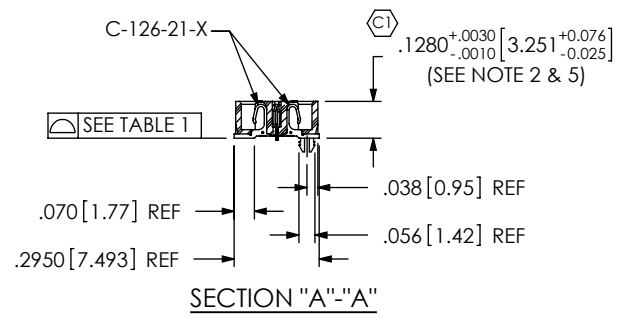
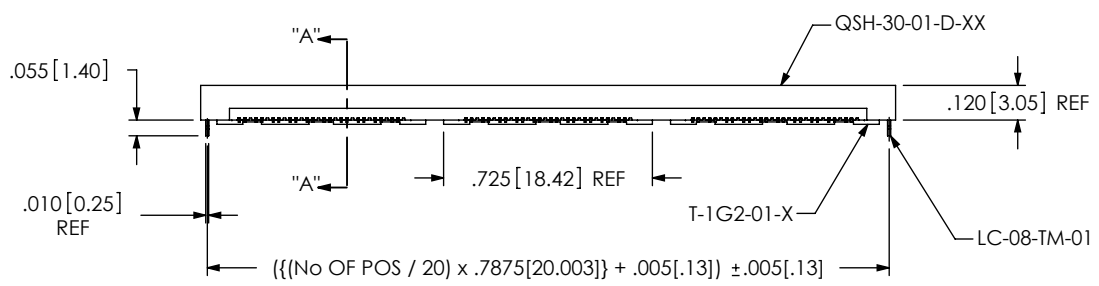
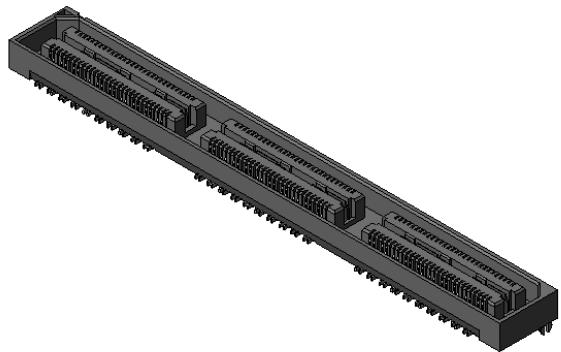


FIG. 1  
-LC: LOCKING CLIP OPTION SHOWN

TABLE 1	
No OF POS	COPLANARITY (INCLUDES GROUND PLANE)
-020 THRU -060	.0040 [0.102]
-080 THRU -100	.0060 [0.152]

- NOTES:
- Ⓢ REPRESENTS A CRITICAL DIMENSION.
  - MAX VARIANCE TO BE .002 [0.05].
  - BURR ALLOWANCE: .0015 [0.38] MAX.
  - MINIMUM PUSHOUT FORCE: 4 OZ.
  - DIM APPLIES TO GROUND PLANE AND CONTACT.
  - MINIMUM GROUND PLANE RETENTION: 8 OZ.
  - L PLATING CAN BE SUBSTITUTED FOR -F PLATING.
  - SUB-SC-05-01-XX RETENTION TO BE 1.0 LBF IN BODY.
  - MAY SUB C-126-01-X for C-126-21-X.
  - FOR NEW APPLICATIONS REQUIRING THESE POSITIONS PLEASE CONTACT SAMTEC INTERCONNECT PROCESSING GROUP.



UNLESS OTHERWISE SPECIFIED, DIMENSIONS ARE IN INCHES. TOLERANCES ARE:  
DECIMALS ANGLES  
.XX: ±.01 [3] 2°  
.XXX: ±.005 [13]  
.XXXX: ±.0020 [051]

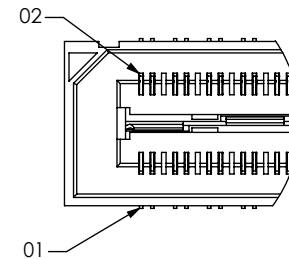
PROPRIETARY NOTE  
THIS DOCUMENT CONTAINS INFORMATION CONFIDENTIAL AND PROPRIETARY TO SAMTEC, INC. AND SHALL NOT BE REPRODUCED OR TRANSFERRED TO OTHER DOCUMENTS OR DISCLOSED TO OTHERS OR USED FOR ANY PURPOSE OTHER THAN THAT WHICH IT WAS OBTAINED WITHOUT THE EXPRESSED WRITTEN CONSENT OF SAMTEC, INC.

**samtec**  
520 PARK EAST BLVD, NEW ALBANY, IN 47150  
PHONE: 812-944-6733 FAX: 812-948-5047  
e-Mail: info@SAMTEC.com code: 55322

MATERIAL: DO NOT SCALE DRAWING SHEET SCALE: 1.5:1	DESCRIPTION: .5mm DIFFERENTIAL PAIRS HS SOCKET ASSEMBLY
INSULATOR: BLACK, LCP TERMINAL: PHOS BRONZE GROUND PLANE: PHOS BRONZE	DWG. NO. QSH-XXX-XX-X-D-DP-XXX
F:\DWG\MISC\mktg\QSH-XXX-XX-X-D-DP-XXX-MKT.SLDDRW	BY: KEVIN B 06/13/00 SHEET 1 OF 3

FIG. 2

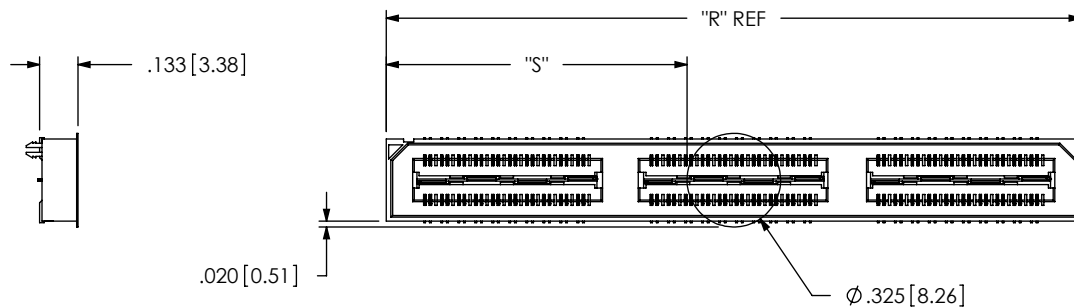
-A: ALIGNMENT PIN OPTION SHOWN



DETAIL 'A'  
SCALE 3:1

FIG. 3

-K: POLYIMIDE FILM PAD



NOTE: "R" = ((No OF POSITIONS / 20) x .7875[20.003]) + .050[1.27]  
 "S" = ("R" - .325[8.26]) / 2) ±.020[.51]

PROPRIETARY NOTE

THIS DOCUMENT CONTAINS INFORMATION CONFIDENTIAL AND PROPRIETARY TO SAMTEC, INC. AND SHALL NOT BE REPRODUCED OR TRANSFERRED TO OTHER DOCUMENTS OR DISCLOSED TO OTHERS OR USED FOR ANY PURPOSE OTHER THAN THAT WHICH IT WAS OBTAINED WITHOUT THE EXPRESSED WRITTEN CONSENT OF SAMTEC, INC.

DO NOT SCALE DRAWING

SHEET SCALE: 1.5:1

**samtec**

520 PARK EAST BLVD, NEW ALBANY, IN 47150  
 PHONE: 812-944-6733 FAX: 812-948-5047  
 e-Mail: info@SAMTEC.com code: 55322

DESCRIPTION:  
 .5mm DIFFERENTIAL PAIRS HS SOCKET ASSEMBLY

DWG. NO.  
**QSH-XXX-XX-X-D-DP-XXX**

BY: KEVIN B 06/13/00 SHEET 2 OF 3

FIG. 4

-GP: GUIDE POST OPTION SHOWN

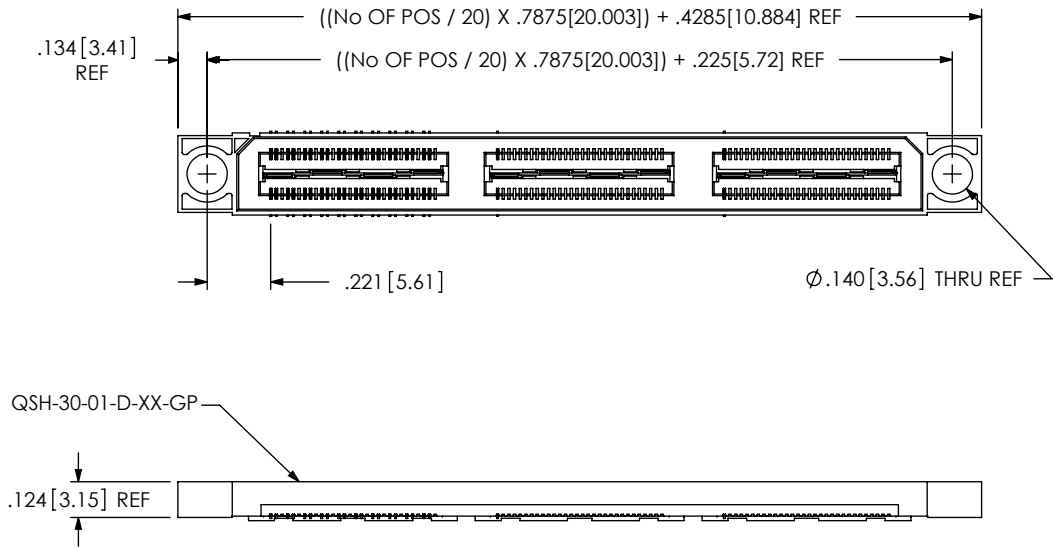


FIG. 5

-FL: FRICTION LOCKS  
(NOT AVAILABLE WITH -GP OPTION)  
(SAME AS FIG. 1, UNLESS OTHERWISE STATED)

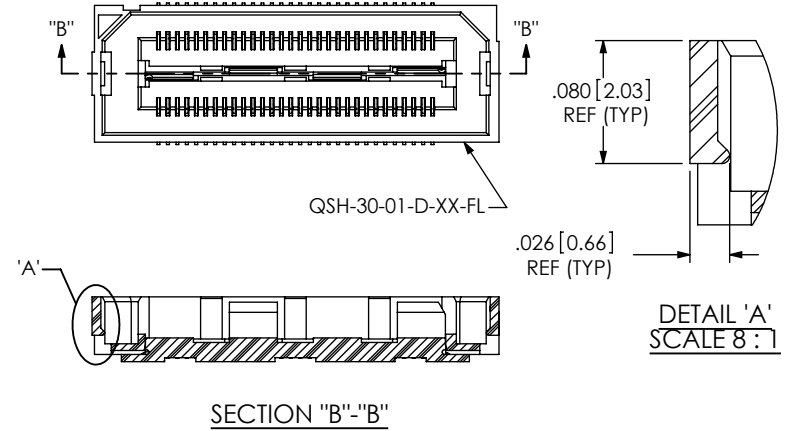
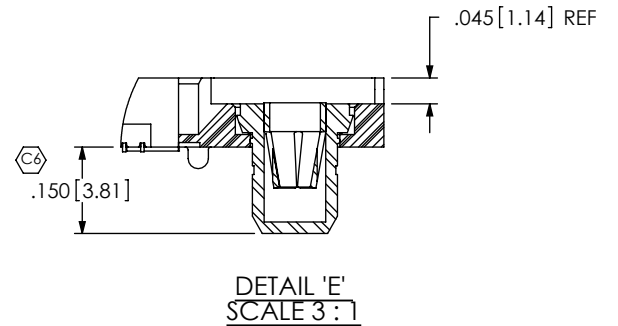
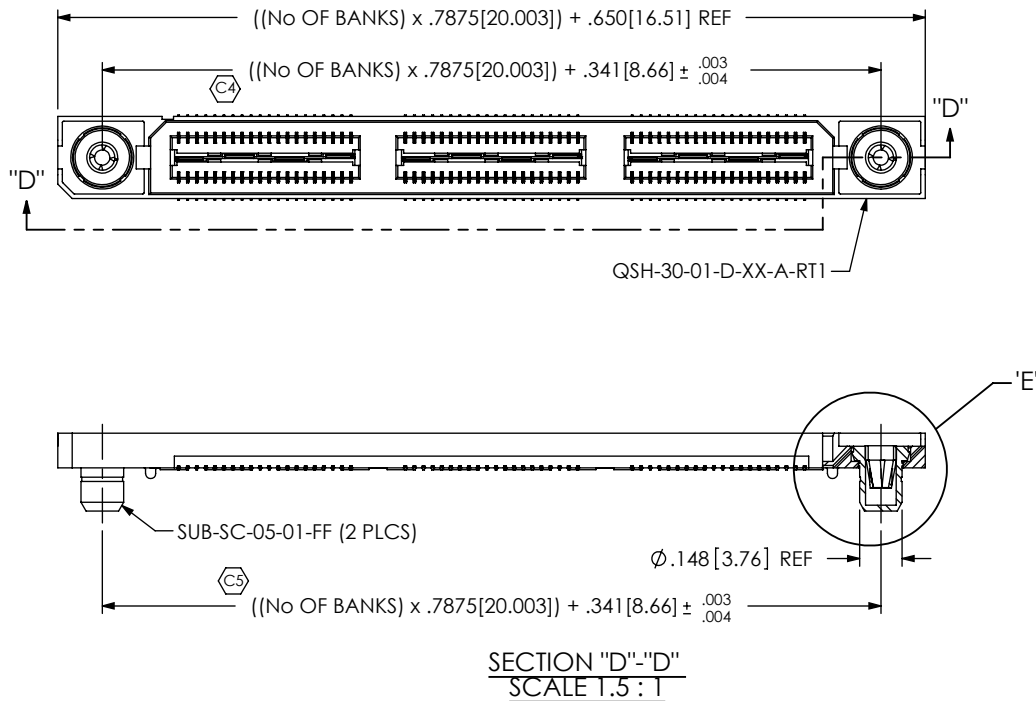


FIG. 6

-RT1: RETENTION OPTION  
(MUST USE -A OPTION)  
(NOT AVAILABLE WITH -LC, -GP, OR -FL OPTIONS)  
(NOT AVAILABLE WITH -080 & -100 POS)  
(SAME AS FIG. 1, UNLESS OTHERWISE STATED)



PROPRIETARY NOTE

THIS DOCUMENT CONTAINS INFORMATION CONFIDENTIAL AND PROPRIETARY TO SAMTEC, INC. AND SHALL NOT BE REPRODUCED OR TRANSFERRED TO OTHER DOCUMENTS OR DISCLOSED TO OTHERS OR USED FOR ANY PURPOSE OTHER THAN THAT WHICH IT WAS OBTAINED WITHOUT THE EXPRESSED WRITTEN CONSENT OF SAMTEC, INC.

DO NOT SCALE DRAWING

SHEET SCALE: 1.25:1

**samtec**

520 PARK EAST BLVD, NEW ALBANY, IN 47150  
PHONE: 812-944-6733 FAX: 812-948-5047  
e-Mail: info@SAMTEC.com code: 55322

DESCRIPTION:  
.5mm DIFFERENTIAL PAIRS HS SOCKET ASSEMBLY

DWG. NO.  
**QSH-XXX-XX-X-D-DP-XXX**

BY: KEVIN B 06/13/00 SHEET 3 OF 3