

-----Original Message-----

From: Richard Cornell [<mailto:Richard.Cornell@samtec.com>]

Sent: Wednesday, November 12, 2008 12:14 PM

To: CustEN

Subject: Samtec Engineering Change Notification - Drawings Attached

<<Cad.zip>>

ECN Number: 99685

Part #: QSE-XXX-01-X-D-XXX

Date of Change: 11/10/08

ECN Changes:

SECTION "A"- "A": **SEE NOTE 13; ADD NOTE 13;-C PLATING OPTION, CHGE
GROUND

PLANE FROM -L TO -G.

PROPRIETARY NOTE:

The enclosed documents contain information confidential and proprietary to Samtec, Inc. and shall not be reproduced or transferred to other documents or disclosed to others without the expressed written consent of Samtec, Inc.

- <SAMTEC_PCN_PARTS_AFFECTED>
<PART NAME="QSE-014-01-F-D-DP" />
<PART NAME="QSE-014-01-F-D-DP-A" />
<PART NAME="QSE-014-01-F-D-DP-A-K" />
<PART NAME="QSE-014-01-F-D-DP-A-K-TR" />
<PART NAME="QSE-014-01-F-D-DP-A-RT1" />
<PART NAME="QSE-014-01-F-D-DP-A-RT1-.F/H" />
<PART NAME="QSE-014-01-F-D-DP-A-TR" />
<PART NAME="QSE-014-01-F-D-DP-EM2" />
<PART NAME="QSE-014-01-F-D-DP-LC" />
<PART NAME="QSE-014-01-H-D-DP-.F/H" />
<PART NAME="QSE-014-01-H-D-DP-A" />
<PART NAME="QSE-014-01-H-D-DP-A-.F/H" />
<PART NAME="QSE-014-01-H-D-DP-A-K" />
<PART NAME="QSE-014-01-H-D-DP-A-K-TR" />
<PART NAME="QSE-014-01-H-D-DP-A-RT1-.F/H" />
<PART NAME="QSE-014-01-H-D-DP-A-RT1-K" />
<PART NAME="QSE-014-01-H-D-DP-A-TR" />
<PART NAME="QSE-014-01-H-D-DP-EM2" />
<PART NAME="QSE-014-01-H-D-DP-EM2-.F/H" />
<PART NAME="QSE-014-01-L-D-DP" />
<PART NAME="QSE-014-01-L-D-DP-A" />
<PART NAME="QSE-014-01-L-D-DP-A-.F/H" />
<PART NAME="QSE-014-01-L-D-DP-A-GP" />
<PART NAME="QSE-014-01-L-D-DP-A-K" />
<PART NAME="QSE-014-01-L-D-DP-A-K-TR" />
<PART NAME="QSE-014-01-L-D-DP-A-K-TY" />
<PART NAME="QSE-014-01-L-D-DP-A-TR" />
<PART NAME="QSE-014-01-L-D-DP-EM2" />
<PART NAME="QSE-014-01-L-D-DP-EM2-GP" />
<PART NAME="QSE-014-01-L-D-DP-LC" />
<PART NAME="QSE-020-01-C-D-A" />
<PART NAME="QSE-020-01-F-D" />
<PART NAME="QSE-020-01-F-D-A" />
<PART NAME="QSE-020-01-F-D-A-.CLS" />
<PART NAME="QSE-020-01-F-D-A-FL" />
<PART NAME="QSE-020-01-F-D-A-GP" />
<PART NAME="QSE-020-01-F-D-A-GP-K" />
<PART NAME="QSE-020-01-F-D-A-GP-K-TR" />
<PART NAME="QSE-020-01-F-D-A-K" />
<PART NAME="QSE-020-01-F-D-A-K-TR" />
<PART NAME="QSE-020-01-F-D-A-K-TR-.CLS" />
<PART NAME="QSE-020-01-F-D-A-K-TR-.H" />
<PART NAME="QSE-020-01-F-D-A-K-TR-.R" />
<PART NAME="QSE-020-01-F-D-A-RT1" />
<PART NAME="QSE-020-01-F-D-A-RT1-.F/H" />
<PART NAME="QSE-020-01-F-D-A-TR" />
<PART NAME="QSE-020-01-F-D-A-TR-.MIR" />
<PART NAME="QSE-020-01-F-D-EM2" />
<PART NAME="QSE-020-01-F-D-EM2-GP" />
<PART NAME="QSE-020-01-F-D-FL" />
<PART NAME="QSE-020-01-F-D-GP" />

<PART NAME="QSE-020-01-F-D-K" />
<PART NAME="QSE-020-01-F-D-K-TR" />
<PART NAME="QSE-020-01-F-D-K-TR-.SLR" />
<PART NAME="QSE-020-01-F-D-LC" />
<PART NAME="QSE-020-01-F-D-LC-K" />
<PART NAME="QSE-020-01-F-D-LC-K-TR" />
<PART NAME="QSE-020-01-F-D-LC-TR" />
<PART NAME="QSE-020-01-F-D-TR" />
<PART NAME="QSE-020-01-H-D-A" />
<PART NAME="QSE-020-01-H-D-A-.F/H" />
<PART NAME="QSE-020-01-H-D-A-GP" />
<PART NAME="QSE-020-01-H-D-A-K" />
<PART NAME="QSE-020-01-H-D-A-K-TR" />
<PART NAME="QSE-020-01-H-D-A-K-TR-.F/H" />
<PART NAME="QSE-020-01-H-D-A-K-TR-.SLR" />
<PART NAME="QSE-020-01-H-D-A-RT1-.F/H" />
<PART NAME="QSE-020-01-H-D-A-TR" />
<PART NAME="QSE-020-01-H-D-A-TY" />
<PART NAME="QSE-020-01-H-D-EM2" />
<PART NAME="QSE-020-01-H-D-EM2-.F/H" />
<PART NAME="QSE-020-01-H-D-K-TR" />
<PART NAME="QSE-020-01-H-D-LC" />
<PART NAME="QSE-020-01-L-D" />
<PART NAME="QSE-020-01-L-D-A" />
<PART NAME="QSE-020-01-L-D-A-.F/H" />
<PART NAME="QSE-020-01-L-D-A-FL" />
<PART NAME="QSE-020-01-L-D-A-FL-.CR" />
<PART NAME="QSE-020-01-L-D-A-GP" />
<PART NAME="QSE-020-01-L-D-A-GP-K" />
<PART NAME="QSE-020-01-L-D-A-GP-K-TR" />
<PART NAME="QSE-020-01-L-D-A-GP-TR" />
<PART NAME="QSE-020-01-L-D-A-K" />
<PART NAME="QSE-020-01-L-D-A-K-GP" />
<PART NAME="QSE-020-01-L-D-A-K-TR" />
<PART NAME="QSE-020-01-L-D-A-K-TR-.A" />
<PART NAME="QSE-020-01-L-D-A-K-TR-.CLS" />
<PART NAME="QSE-020-01-L-D-A-K-TR-.F" />
<PART NAME="QSE-020-01-L-D-A-K-TR-.JAB" />
<PART NAME="QSE-020-01-L-D-A-K-TR-.JABFL" />
<PART NAME="QSE-020-01-L-D-A-K-TR-.JBL" />
<PART NAME="QSE-020-01-L-D-A-K-TR-.SOL" />
<PART NAME="QSE-020-01-L-D-A-K-TR-.SOLTX" />
<PART NAME="QSE-020-01-L-D-A-K-TY" />
<PART NAME="QSE-020-01-L-D-A-TR" />
<PART NAME="QSE-020-01-L-D-A-TR-.JABFL" />
<PART NAME="QSE-020-01-L-D-EM2" />
<PART NAME="QSE-020-01-L-D-EM2-GP" />
<PART NAME="QSE-020-01-L-D-EM3-.PARATE" />
<PART NAME="QSE-020-01-L-D-GP" />
<PART NAME="QSE-020-01-L-D-K" />
<PART NAME="QSE-020-01-L-D-K-TR" />
<PART NAME="QSE-020-01-L-D-K-TY" />

<PART NAME="QSE-020-01-L-D-LC" />
<PART NAME="QSE-020-01-L-D-TR" />
<PART NAME="QSE-028-01-F-D-DP" />
<PART NAME="QSE-028-01-F-D-DP-A" />
<PART NAME="QSE-028-01-F-D-DP-A-K" />
<PART NAME="QSE-028-01-F-D-DP-A-K-TR" />
<PART NAME="QSE-028-01-F-D-DP-A-RT1-.F/H" />
<PART NAME="QSE-028-01-F-D-DP-EM2" />
<PART NAME="QSE-028-01-F-D-DP-GP" />
<PART NAME="QSE-028-01-F-D-DP-LC" />
<PART NAME="QSE-028-01-H-D-DP-A" />
<PART NAME="QSE-028-01-H-D-DP-A-.F/H" />
<PART NAME="QSE-028-01-H-D-DP-A-K" />
<PART NAME="QSE-028-01-H-D-DP-A-K-TR" />
<PART NAME="QSE-028-01-H-D-DP-A-RT1" />
<PART NAME="QSE-028-01-H-D-DP-A-RT1-.F/H" />
<PART NAME="QSE-028-01-H-D-DP-A-TR" />
<PART NAME="QSE-028-01-H-D-DP-EM2" />
<PART NAME="QSE-028-01-H-D-DP-EM2-.F/H" />
<PART NAME="QSE-028-01-H-D-DP-K-TR" />
<PART NAME="QSE-028-01-L-D-DP" />
<PART NAME="QSE-028-01-L-D-DP-.F/H" />
<PART NAME="QSE-028-01-L-D-DP-A" />
<PART NAME="QSE-028-01-L-D-DP-A-.F/H" />
<PART NAME="QSE-028-01-L-D-DP-A-.H" />
<PART NAME="QSE-028-01-L-D-DP-A-GP" />
<PART NAME="QSE-028-01-L-D-DP-A-GP-.F/H" />
<PART NAME="QSE-028-01-L-D-DP-A-K" />
<PART NAME="QSE-028-01-L-D-DP-A-K-TR" />
<PART NAME="QSE-028-01-L-D-DP-A-RT1" />
<PART NAME="QSE-028-01-L-D-DP-A-TR" />
<PART NAME="QSE-028-01-L-D-DP-A-TR-.NARA" />
<PART NAME="QSE-028-01-L-D-DP-EM2" />
<PART NAME="QSE-028-01-L-D-DP-GP" />
<PART NAME="QSE-028-01-L-D-DP-LC" />
<PART NAME="QSE-040-01-C-D-A" />
<PART NAME="QSE-040-01-F-D" />
<PART NAME="QSE-040-01-F-D-A" />
<PART NAME="QSE-040-01-F-D-A-.F/H" />
<PART NAME="QSE-040-01-F-D-A-.MIR" />
<PART NAME="QSE-040-01-F-D-A-FL" />
<PART NAME="QSE-040-01-F-D-A-GP" />
<PART NAME="QSE-040-01-F-D-A-GP-K" />
<PART NAME="QSE-040-01-F-D-A-GP-K-TR" />
<PART NAME="QSE-040-01-F-D-A-GP-TR" />
<PART NAME="QSE-040-01-F-D-A-K" />
<PART NAME="QSE-040-01-F-D-A-K-TR" />
<PART NAME="QSE-040-01-F-D-A-K-TR-.CLS" />
<PART NAME="QSE-040-01-F-D-A-K-TR-.FUJIT" />
<PART NAME="QSE-040-01-F-D-A-K-TR-.H" />
<PART NAME="QSE-040-01-F-D-A-K-TR-.R" />
<PART NAME="QSE-040-01-F-D-A-K-TR-.XYRAT" />

<PART NAME="QSE-040-01-F-D-A-RT1" />
<PART NAME="QSE-040-01-F-D-A-RT1-.F/H" />
<PART NAME="QSE-040-01-F-D-A-TR" />
<PART NAME="QSE-040-01-F-D-EM2" />
<PART NAME="QSE-040-01-F-D-EM2-GP" />
<PART NAME="QSE-040-01-F-D-K" />
<PART NAME="QSE-040-01-F-D-K-TR" />
<PART NAME="QSE-040-01-F-D-LC" />
<PART NAME="QSE-040-01-F-D-LC-K" />
<PART NAME="QSE-040-01-F-D-LC-TR" />
<PART NAME="QSE-040-01-F-D-TR" />
<PART NAME="QSE-040-01-H-D-A" />
<PART NAME="QSE-040-01-H-D-A-.F/H" />
<PART NAME="QSE-040-01-H-D-A-GP" />
<PART NAME="QSE-040-01-H-D-A-K" />
<PART NAME="QSE-040-01-H-D-A-K-TR" />
<PART NAME="QSE-040-01-H-D-A-TR" />
<PART NAME="QSE-040-01-H-D-A-TY" />
<PART NAME="QSE-040-01-H-D-EM2" />
<PART NAME="QSE-040-01-H-D-EM2-.F/H" />
<PART NAME="QSE-040-01-H-D-K-TR" />
<PART NAME="QSE-040-01-H-D-LC" />
<PART NAME="QSE-040-01-L-D" />
<PART NAME="QSE-040-01-L-D-A" />
<PART NAME="QSE-040-01-L-D-A-.F/H" />
<PART NAME="QSE-040-01-L-D-A-.JBL" />
<PART NAME="QSE-040-01-L-D-A-.K" />
<PART NAME="QSE-040-01-L-D-A-GP" />
<PART NAME="QSE-040-01-L-D-A-GP-.F/H" />
<PART NAME="QSE-040-01-L-D-A-GP-K" />
<PART NAME="QSE-040-01-L-D-A-GP-K-TR" />
<PART NAME="QSE-040-01-L-D-A-GP-TR" />
<PART NAME="QSE-040-01-L-D-A-K" />
<PART NAME="QSE-040-01-L-D-A-K-.H" />
<PART NAME="QSE-040-01-L-D-A-K-TR" />
<PART NAME="QSE-040-01-L-D-A-K-TR-.JAB" />
<PART NAME="QSE-040-01-L-D-A-K-TR-.JABSC" />
<PART NAME="QSE-040-01-L-D-A-K-TR-.JBL" />
<PART NAME="QSE-040-01-L-D-A-K-TY" />
<PART NAME="QSE-040-01-L-D-A-RT1" />
<PART NAME="QSE-040-01-L-D-A-RT1-K-TR" />
<PART NAME="QSE-040-01-L-D-A-TR" />
<PART NAME="QSE-040-01-L-D-A-TY" />
<PART NAME="QSE-040-01-L-D-EM2" />
<PART NAME="QSE-040-01-L-D-EM2-GP" />
<PART NAME="QSE-040-01-L-D-EM2-GP-.F/H" />
<PART NAME="QSE-040-01-L-D-EM3-.C-DOT" />
<PART NAME="QSE-040-01-L-D-GP" />
<PART NAME="QSE-040-01-L-D-K" />
<PART NAME="QSE-040-01-L-D-K-TR" />
<PART NAME="QSE-040-01-L-D-K-TY" />
<PART NAME="QSE-040-01-L-D-LC" />

<PART NAME="QSE-040-01-L-D-LC-.F/H" />
<PART NAME="QSE-040-01-L-D-LC-K-TR" />
<PART NAME="QSE-040-01-L-D-LC-TR" />
<PART NAME="QSE-040-01-L-D-TR" />
<PART NAME="QSE-042-01-F-D-DP" />
<PART NAME="QSE-042-01-F-D-DP-A" />
<PART NAME="QSE-042-01-F-D-DP-A-K" />
<PART NAME="QSE-042-01-F-D-DP-A-K-TR" />
<PART NAME="QSE-042-01-F-D-DP-A-K-TR-.JAB" />
<PART NAME="QSE-042-01-F-D-DP-A-RT1" />
<PART NAME="QSE-042-01-F-D-DP-A-RT1-.F/H" />
<PART NAME="QSE-042-01-F-D-DP-A-TR" />
<PART NAME="QSE-042-01-F-D-DP-EM2" />
<PART NAME="QSE-042-01-H-D-DP" />
<PART NAME="QSE-042-01-H-D-DP-A" />
<PART NAME="QSE-042-01-H-D-DP-A-.F/H" />
<PART NAME="QSE-042-01-H-D-DP-A-TR" />
<PART NAME="QSE-042-01-H-D-DP-EM2" />
<PART NAME="QSE-042-01-H-D-DP-EM2-.F/H" />
<PART NAME="QSE-042-01-L-D-DP" />
<PART NAME="QSE-042-01-L-D-DP-A" />
<PART NAME="QSE-042-01-L-D-DP-A-.F/H" />
<PART NAME="QSE-042-01-L-D-DP-A-GP" />
<PART NAME="QSE-042-01-L-D-DP-A-K" />
<PART NAME="QSE-042-01-L-D-DP-A-K-TR" />
<PART NAME="QSE-042-01-L-D-DP-A-TR" />
<PART NAME="QSE-042-01-L-D-DP-EM2" />
<PART NAME="QSE-042-01-L-D-DP-EM2-GP" />
<PART NAME="QSE-042-01-L-D-DP-GP" />
<PART NAME="QSE-056-01-F-D-DP-A" />
<PART NAME="QSE-056-01-F-D-DP-A-K" />
<PART NAME="QSE-056-01-H-D-DP-A" />
<PART NAME="QSE-056-01-H-D-DP-A-.F/H" />
<PART NAME="QSE-056-01-H-D-DP-EM2" />
<PART NAME="QSE-056-01-H-D-DP-EM2-.F/H" />
<PART NAME="QSE-056-01-L-D-DP" />
<PART NAME="QSE-056-01-L-D-DP-A" />
<PART NAME="QSE-056-01-L-D-DP-A-GP" />
<PART NAME="QSE-056-01-L-D-DP-A-K" />
<PART NAME="QSE-056-01-L-D-DP-EM2" />
<PART NAME="QSE-056-01-L-D-DP-GP" />
<PART NAME="QSE-056-01-L-D-DP-K" />
<PART NAME="QSE-056-01-L-D-DP-LC" />
<PART NAME="QSE-060-01-F-D" />
<PART NAME="QSE-060-01-F-D-A" />
<PART NAME="QSE-060-01-F-D-A-.F/H" />
<PART NAME="QSE-060-01-F-D-A-GP" />
<PART NAME="QSE-060-01-F-D-A-GP-K" />
<PART NAME="QSE-060-01-F-D-A-GP-K-.SLR" />
<PART NAME="QSE-060-01-F-D-A-K" />
<PART NAME="QSE-060-01-F-D-A-K-.R" />
<PART NAME="QSE-060-01-F-D-A-K-TR" />

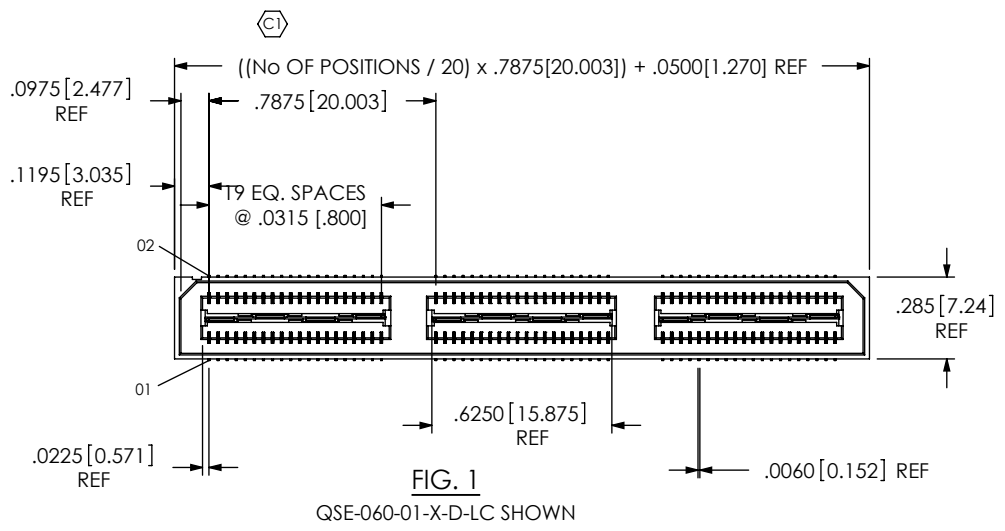
<PART NAME="QSE-060-01-F-D-A-K-TR-.R" />
<PART NAME="QSE-060-01-F-D-A-RT1" />
<PART NAME="QSE-060-01-F-D-A-RT1-.F/H" />
<PART NAME="QSE-060-01-F-D-A-TR" />
<PART NAME="QSE-060-01-F-D-EM2" />
<PART NAME="QSE-060-01-F-D-EM2-GP" />
<PART NAME="QSE-060-01-F-D-GP" />
<PART NAME="QSE-060-01-F-D-K-TR" />
<PART NAME="QSE-060-01-F-D-LC" />
<PART NAME="QSE-060-01-F-D-LC-K" />
<PART NAME="QSE-060-01-F-D-LC-K-TR" />
<PART NAME="QSE-060-01-H-D-A" />
<PART NAME="QSE-060-01-H-D-A-.F/H" />
<PART NAME="QSE-060-01-H-D-A-GP" />
<PART NAME="QSE-060-01-H-D-A-K" />
<PART NAME="QSE-060-01-H-D-A-K-TR" />
<PART NAME="QSE-060-01-H-D-A-RT1" />
<PART NAME="QSE-060-01-H-D-A-RT1-.F/H" />
<PART NAME="QSE-060-01-H-D-A-TR" />
<PART NAME="QSE-060-01-H-D-A-TY" />
<PART NAME="QSE-060-01-H-D-EM2" />
<PART NAME="QSE-060-01-H-D-EM2-.F/H" />
<PART NAME="QSE-060-01-H-D-EM2-GP" />
<PART NAME="QSE-060-01-H-D-EM2-TY" />
<PART NAME="QSE-060-01-H-D-GP-LC" />
<PART NAME="QSE-060-01-H-D-K-TR" />
<PART NAME="QSE-060-01-L-D" />
<PART NAME="QSE-060-01-L-D-A" />
<PART NAME="QSE-060-01-L-D-A-.F/H" />
<PART NAME="QSE-060-01-L-D-A-GP" />
<PART NAME="QSE-060-01-L-D-A-GP-K" />
<PART NAME="QSE-060-01-L-D-A-K" />
<PART NAME="QSE-060-01-L-D-A-K-.H" />
<PART NAME="QSE-060-01-L-D-A-K-TR" />
<PART NAME="QSE-060-01-L-D-A-K-TR-.JABMX" />
<PART NAME="QSE-060-01-L-D-A-K-TR-.MIR" />
<PART NAME="QSE-060-01-L-D-A-K-TY" />
<PART NAME="QSE-060-01-L-D-A-TR" />
<PART NAME="QSE-060-01-L-D-EM2" />
<PART NAME="QSE-060-01-L-D-EM2-GP" />
<PART NAME="QSE-060-01-L-D-FL" />
<PART NAME="QSE-060-01-L-D-FL-K-TR" />
<PART NAME="QSE-060-01-L-D-GP" />
<PART NAME="QSE-060-01-L-D-K" />
<PART NAME="QSE-060-01-L-D-K-TR" />
<PART NAME="QSE-060-01-L-D-K-TY" />
<PART NAME="QSE-060-01-L-D-LC" />
<PART NAME="QSE-060-01-L-D-LC-K" />
<PART NAME="QSE-060-01-L-D-LC-TR" />
<PART NAME="QSE-060-01-L-D-TR" />
<PART NAME="QSE-070-01-F-D-DP-A" />
<PART NAME="QSE-070-01-F-D-DP-DDSDD" />

<PART NAME="QSE-070-01-F-D-DP-EM2" />
<PART NAME="QSE-070-01-F-D-DP-SDDSS" />
<PART NAME="QSE-070-01-F-D-DP-SSDSD" />
<PART NAME="QSE-070-01-H-D-DP-A" />
<PART NAME="QSE-070-01-H-D-DP-A-.F/H" />
<PART NAME="QSE-070-01-L-D-DP" />
<PART NAME="QSE-070-01-L-D-DP-A" />
<PART NAME="QSE-070-01-L-D-DP-A-.F/H" />
<PART NAME="QSE-070-01-L-D-DP-A-GP" />
<PART NAME="QSE-070-01-L-D-DP-A-K" />
<PART NAME="QSE-070-01-L-D-DP-EM2" />
<PART NAME="QSE-080-01-F-D" />
<PART NAME="QSE-080-01-F-D-A" />
<PART NAME="QSE-080-01-F-D-A-GP" />
<PART NAME="QSE-080-01-F-D-A-GP-K" />
<PART NAME="QSE-080-01-F-D-A-K" />
<PART NAME="QSE-080-01-F-D-A-K-.R" />
<PART NAME="QSE-080-01-F-D-EM2" />
<PART NAME="QSE-080-01-F-D-EM2-.XYRAT" />
<PART NAME="QSE-080-01-F-D-LC" />
<PART NAME="QSE-080-01-H-D-A" />
<PART NAME="QSE-080-01-H-D-A-.F/H" />
<PART NAME="QSE-080-01-H-D-A-GP" />
<PART NAME="QSE-080-01-H-D-A-K" />
<PART NAME="QSE-080-01-H-D-A-TY" />
<PART NAME="QSE-080-01-H-D-EM2" />
<PART NAME="QSE-080-01-H-D-EM2-.F/H" />
<PART NAME="QSE-080-01-H-D-EM2-TY" />
<PART NAME="QSE-080-01-L-D" />
<PART NAME="QSE-080-01-L-D-A" />
<PART NAME="QSE-080-01-L-D-A-GP" />
<PART NAME="QSE-080-01-L-D-A-GP-K" />
<PART NAME="QSE-080-01-L-D-A-K" />
<PART NAME="QSE-080-01-L-D-A-K-.H" />
<PART NAME="QSE-080-01-L-D-A-TY" />
<PART NAME="QSE-080-01-L-D-EM2" />
<PART NAME="QSE-080-01-L-D-EM3-.NORTEL" />
<PART NAME="QSE-080-01-L-D-GP" />
<PART NAME="QSE-080-01-L-D-K" />
<PART NAME="QSE-080-01-L-D-LC" />
<PART NAME="QSE-100-01-F-D" />
<PART NAME="QSE-100-01-F-D-A" />
<PART NAME="QSE-100-01-F-D-A-GP" />
<PART NAME="QSE-100-01-F-D-A-GP-K" />
<PART NAME="QSE-100-01-F-D-A-K" />
<PART NAME="QSE-100-01-F-D-A-K-.R" />
<PART NAME="QSE-100-01-F-D-A-K-GP" />
<PART NAME="QSE-100-01-F-D-A-TY" />
<PART NAME="QSE-100-01-F-D-EM2" />
<PART NAME="QSE-100-01-F-D-EM3-.CEDAR" />
<PART NAME="QSE-100-01-H-D" />
<PART NAME="QSE-100-01-H-D-.F/H" />

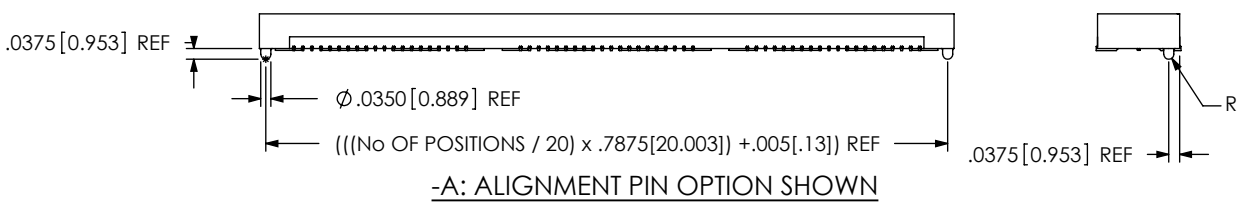
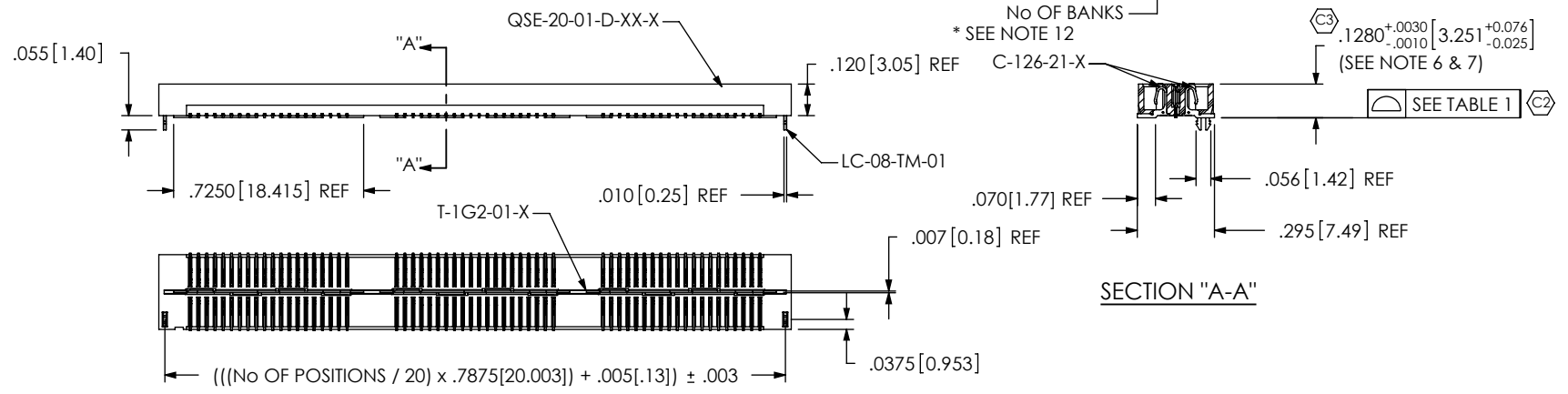
<PART NAME="QSE-100-01-H-D-A" />
<PART NAME="QSE-100-01-H-D-A-.F/H" />
<PART NAME="QSE-100-01-L-D" />
<PART NAME="QSE-100-01-L-D-A" />
<PART NAME="QSE-100-01-L-D-A-.F/H" />
<PART NAME="QSE-100-01-L-D-A-FL" />
<PART NAME="QSE-100-01-L-D-A-GP" />
<PART NAME="QSE-100-01-L-D-A-K" />
<PART NAME="QSE-100-01-L-D-A-K-TY" />
<PART NAME="QSE-100-01-L-D-EM2" />
<PART NAME="QSE-100-01-L-D-EM3-.CEDAR" />
<PART NAME="QSE-100-01-L-D-EM3-.PLEXUS" />
<PART NAME="QSE-100-01-L-D-GP" />
<PART NAME="QSE-100-01-L-D-LC" />
<PART NAME="QSE-14-01-D-DP-01-A" />
<PART NAME="QSE-14-01-D-DP-02-A" />
<PART NAME="QSE-14-01-D-DP-03-A" />
<PART NAME="QSE-14-01-D-DP-05" />
<PART NAME="QSE-20-01-D-01" />
<PART NAME="QSE-20-01-D-01-.CR" />
<PART NAME="QSE-20-01-D-01-A" />
<PART NAME="QSE-20-01-D-01-A-.CR" />
<PART NAME="QSE-20-01-D-01-A-FL" />
<PART NAME="QSE-20-01-D-01-A-FL-.CR" />
<PART NAME="QSE-20-01-D-01-A-GP" />
<PART NAME="QSE-20-01-D-01-A-RT1" />
<PART NAME="QSE-20-01-D-01-FL" />
<PART NAME="QSE-20-01-D-01-GP" />
<PART NAME="QSE-20-01-D-02" />
<PART NAME="QSE-20-01-D-02-.CR" />
<PART NAME="QSE-20-01-D-02-A" />
<PART NAME="QSE-20-01-D-02-A-.CR" />
<PART NAME="QSE-20-01-D-02-A-FL" />
<PART NAME="QSE-20-01-D-02-A-FL-.CR" />
<PART NAME="QSE-20-01-D-02-A-GP" />
<PART NAME="QSE-20-01-D-02-A-RT1" />
<PART NAME="QSE-20-01-D-02-GP" />
<PART NAME="QSE-20-01-D-03" />
<PART NAME="QSE-20-01-D-03-.CR" />
<PART NAME="QSE-20-01-D-03-A" />
<PART NAME="QSE-20-01-D-03-A-.CR" />
<PART NAME="QSE-20-01-D-03-A-GP" />
<PART NAME="QSE-20-01-D-03-A-RT1" />
<PART NAME="QSE-20-01-D-03-FL" />
<PART NAME="QSE-20-01-D-03-FL-.CR" />
<PART NAME="QSE-20-01-D-03-GP" />
<PART NAME="QSE-20-01-D-04" />
<PART NAME="QSE-20-01-D-04-.CR" />
<PART NAME="QSE-20-01-D-04-A" />
<PART NAME="QSE-20-01-D-04-A-.CR" />
<PART NAME="QSE-20-01-D-04-A-GP" />
<PART NAME="QSE-20-01-D-04-GP" />

<PART NAME="QSE-20-01-D-05" />
<PART NAME="QSE-20-01-D-05-.CR" />
<PART NAME="QSE-20-01-D-05-A" />
<PART NAME="QSE-20-01-D-05-A-FL" />
<PART NAME="QSE-20-01-D-05-A-GP" />
<PART NAME="QSE-20-01-D-05-GP" />
<PART NAME="QSE-20-01-D-EM2-01" />
<PART NAME="QSE-20-01-D-EM2-01-GP" />
<PART NAME="QSE-20-01-D-EM2-02" />
<PART NAME="QSE-20-01-D-EM2-02-GP" />
<PART NAME="QSE-20-01-D-EM2-03" />
<PART NAME="QSE-20-01-D-EM2-03-GP" />
<PART NAME="QSE-20-01-D-EM2-04" />
<PART NAME="QSE-20-01-D-EM2-04-GP" />
<PART NAME="QSE-20-01-D-EM2-05" />
<PART NAME="QSE-20-01-D-EM2-05-GP" />
<PART NAME="QSE-20-01-D-EM3-01" />
<PART NAME="QSE-20-01-D-EM3-02" />
<PART NAME="QSE-20-01-D-EM3-02-GP" />
<PART NAME="QSE-20-01-D-EM3-03" />
<PART NAME="QSE-20-01-D-EM3-04" />
<PART NAME="QSE-20-01-D-EM3-05" />
<PART NAME="QSE-DP-SAMPLE-BOARD" />
<PART NAME="QSE-EM2-GP-SAMPLE-BOARD" />
</SAMTEC_PCN_PARTS_AFFECTED>

DO NOT SCALE FROM THIS PRINT



- No OF POSITIONS**
 -020, -040, -060
 *-080, *-100 (PER ROW)
- LEAD STYLE**
 -01 .1280[3.251]
- PLATING SPECIFICATION**
 -F: FLASH SELECTIVE GOLD WITH MATTE TIN TAILS (USE C-126-21-F, T-1G2-XX-F) (SEE NOTE 8)
 -L: LIGHT SELECTIVE GOLD WITH MATTE TIN TAILS (SEE NOTE 11) (USE C-126-21-L, T-1G2-XX-L)
 -H: HEAVY GOLD (SEE NOTE 11) (USE C-126-21-H, T-1G2-XX-G)
 -C: ELECTRO-POLISHED SELECTIVE (SEE NOTE 11) (USE C-126-21-C, T-1G2-XX-L)
- ROW SPECIFICATION**
 -D: DOUBLE (USE QSE-20-XX-D-XX)
 No OF BANKS
 * SEE NOTE 12
- OPTION**
 -A: ALIGNMENT PINS (USE QSE-20-XX-D-XX-A) NA WITH -LC OPTION
 -LC: LOCKING CLIPS (USE LC-08-TM-01) NA WITH -A OPTION
 -GP: GUIDE POSTS (SEE FIG. 3) (USE QSE-20-01-D-XX-X-GP) (T & R PACKAGING: 40 POS. MAX.)
 -K: POLYIMIDE FILM (USE K-DOT-.325-.450-.005, SEE FIG. 2)
 -TR: TAPE & REEL (60 POS. MAX) (40 POS MAX -GP OPTION)
 -FL: FRICTION LOCKS (SEE FIG. 4, SHEET 2) (NOT AVAILABLE WITH -GP)
 -RT1: RETENTION OPTION (MUST USE -A OPTION) (USE QSE-20-01-D-XX-A-RT1 & SUB-SC-05-01-FF) (SEE FIG. 5, SHEET 2) (NOT AVAILABLE WITH -LC, -GP, OR -FL) (NOT AVAILABLE WITH -080 & -100 POS)



| No OF POS | COPLANARITY INCLUDING GP |
|----------------|--------------------------|
| -020 THRU -040 | .0040[.102] |
| -060 THRU -100 | .0060[.152] |

- NOTES:
- CONTACT RETENTION: 8 OZ MIN.
 - GROUND PLANE RETENTION: 8 OZ MIN.
 - © REPRESENTS A CRITICAL DIMENSION.
 - PARTS ARE MOLDED TO POSITION.
 - DELETED.
 - MAX VARIANCE OF .002[.51].
 - DIMENSION APPLIES TO CONTACTS & GROUND PLANE.
 - L PLATING CAN BE SUBSTITUTED FOR -F PLATING, -G PLATED GROUND PLANE CAN BE SUBSTITUTED FOR -F PLATED GROUND PLANE.
 - GROUND PLANE PRESS HEIGHT MUST BE .003 [.08] LESS THAN THE MAX HEIGHT OR .001 [.03] GREATER THAN THE MINIMUM HEIGHT OF THE SOCKETS.
 - S-103 RETENTION: 1 LB MIN IN BODY.
 - MAY SUB C-126-01-X FOR C-126-21-X.
 - FOR NEW APPLICATIONS REQUIRING THESE POSITIONS, PLEASE CONTACT SAMTEC INTERCONNECT PROCESSING GROUP.

UNLESS OTHERWISE SPECIFIED, DIMENSIONS ARE IN INCHES. TOLERANCES ARE:

| | |
|---------------------|--------|
| DECIMALS | ANGLES |
| .XX: ±.01[.3] | 2° |
| .XXX: ±.005[.13] | |
| .XXXX: ±.0020[.051] | |

MATERIAL: DO NOT SCALE DRAWING
 INSULATOR: BLACK LCP
 CONTACT: PHOS BRONZE
 GROUND PLANE: PHOS BRONZE

PROPRIETARY NOTE
 THIS DOCUMENT CONTAINS INFORMATION CONFIDENTIAL AND PROPRIETARY TO SAMTEC, INC. AND SHALL NOT BE REPRODUCED OR TRANSFERRED TO OTHER DOCUMENTS OR DISCLOSED TO OTHERS OR USED FOR ANY PURPOSE OTHER THAN THAT WHICH IT WAS OBTAINED WITHOUT THE EXPRESSED WRITTEN CONSENT OF SAMTEC, INC.

520 PARK EAST BLVD, NEW ALBANY, IN 47150
 PHONE: 812-944-6733 FAX: 812-948-5047
 e-Mail: info@SAMTEC.com code: 5332

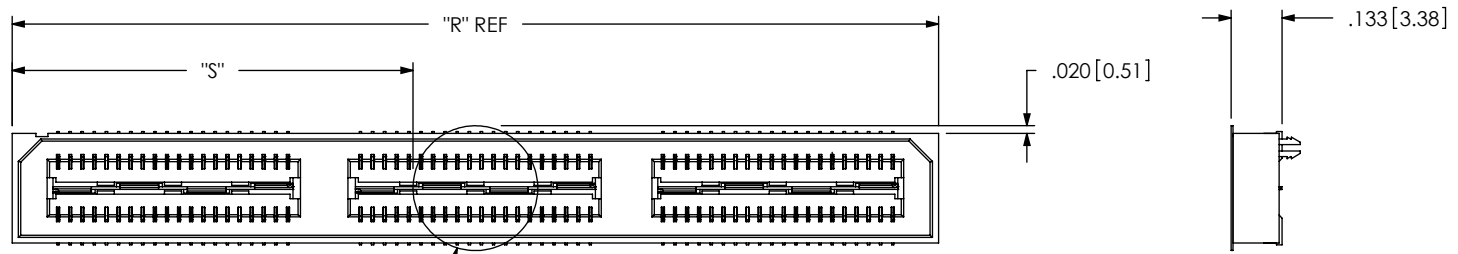


FIG. 2
 -K: POLYIMIDE FILM PAD
 [K-DOT-.325-.450-.005]
 $\phi .325 [8.26]$

NOTE: "R" = ((No OF POSITIONS / 20) x .7875[20.003]) + .050[1.27]
 WITH -GP OPTION: "R" = ((No OF POSITIONS / 20) x .7875[20.003]) + .429[10.90] REF
 "S" = (("R" - .325[8.26]) / 2) ± .020[.51]

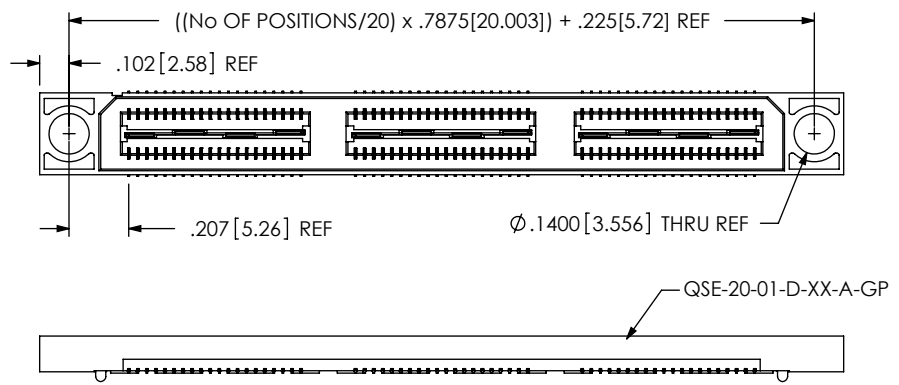


FIG. 3
 -GP OPTION
 (SAME AS FIG. 1, UNLESS OTHERWISE STATED)
 [AVAILABLE ON LEAD STYLE -01 & -01-A ONLY]
 (40 POS. MAX WITH T & R PACKAGING)

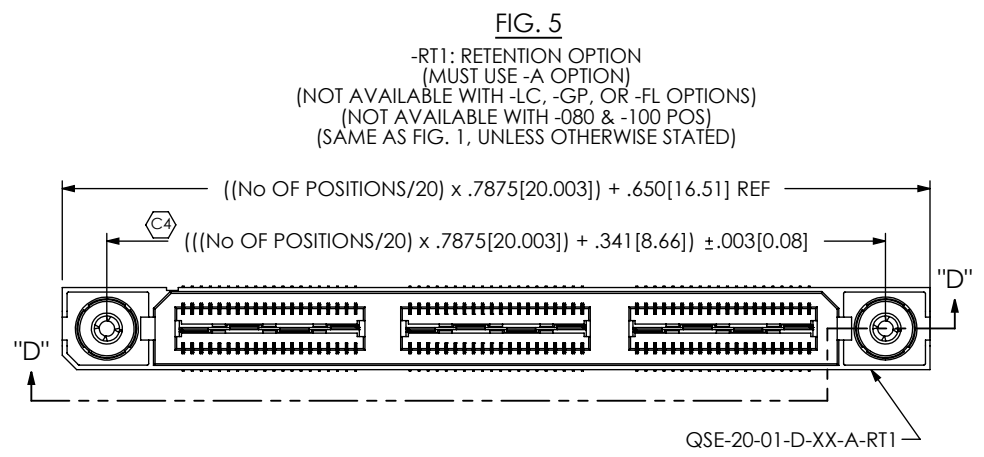


FIG. 5
 -RT1: RETENTION OPTION
 (MUST USE -A OPTION)
 (NOT AVAILABLE WITH -LC, -GP, OR -FL OPTIONS)
 (NOT AVAILABLE WITH -080 & -100 POS)
 (SAME AS FIG. 1, UNLESS OTHERWISE STATED)

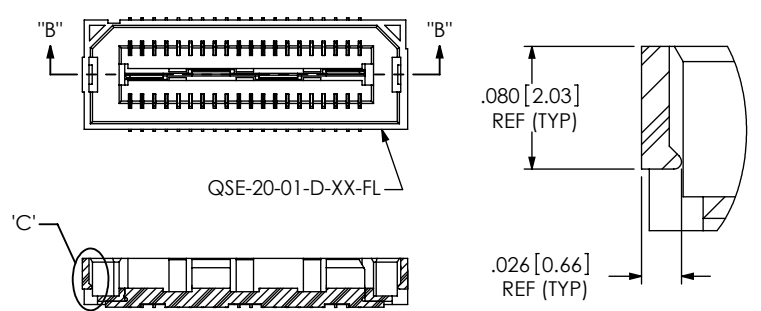
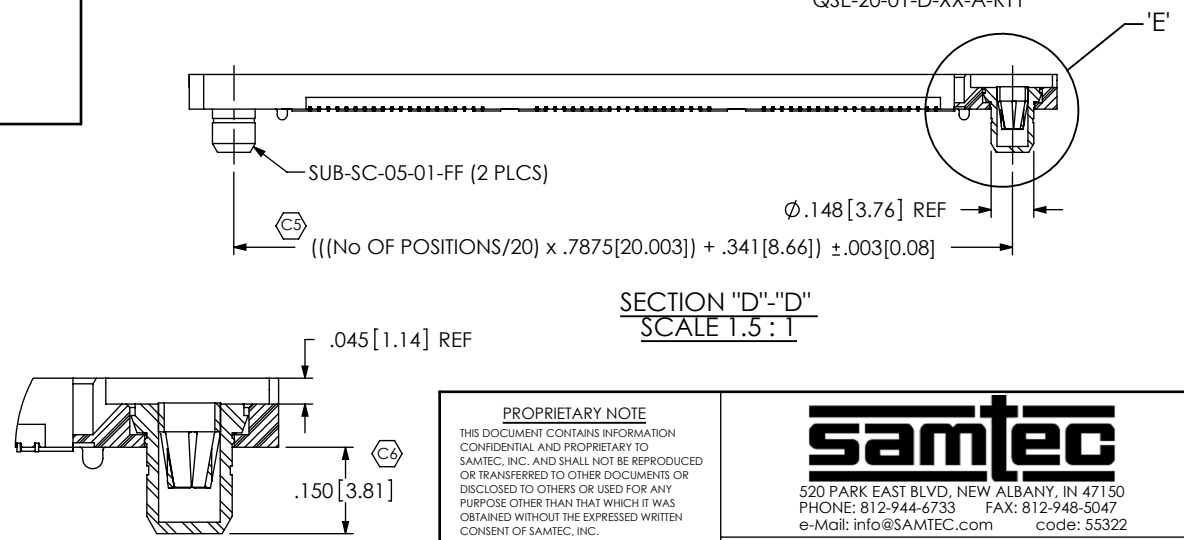


FIG. 4
 -FL: FRICTION LOCKS
 (NOT AVAILABLE WITH -GP OPTION)
 (SAME AS FIG. 1, UNLESS OTHERWISE STATED)



DETAIL 'E'
 SCALE 3 : 1

PROPRIETARY NOTE
 THIS DOCUMENT CONTAINS INFORMATION
 CONFIDENTIAL AND PROPRIETARY TO
 SAMTEC, INC. AND SHALL NOT BE REPRODUCED
 OR TRANSFERRED TO OTHER DOCUMENTS OR
 DISCLOSED TO OTHERS OR USED FOR ANY
 PURPOSE OTHER THAN THAT WHICH IT WAS
 OBTAINED WITHOUT THE EXPRESSED WRITTEN
 CONSENT OF SAMTEC, INC.

DO NOT SCALE DRAWING

SHEET SCALE: 2:1

| | |
|--|------------|
| samtec | |
| 520 PARK EAST BLVD. NEW ALBANY, IN 47150 PHONE: 812-944-6733 FAX: 812-948-5047 e-Mail: info@SAMTEC.com code: 55322 | |
| DESCRIPTION: .8mm DOUBLE ROW HS SOCKET ASSEMBLY | |
| DWG. NO. QSE-XXX-01-X-D-XXX | |
| BY: ERIC M | 05/20/1999 |
| SHEET 2 OF 2 | |