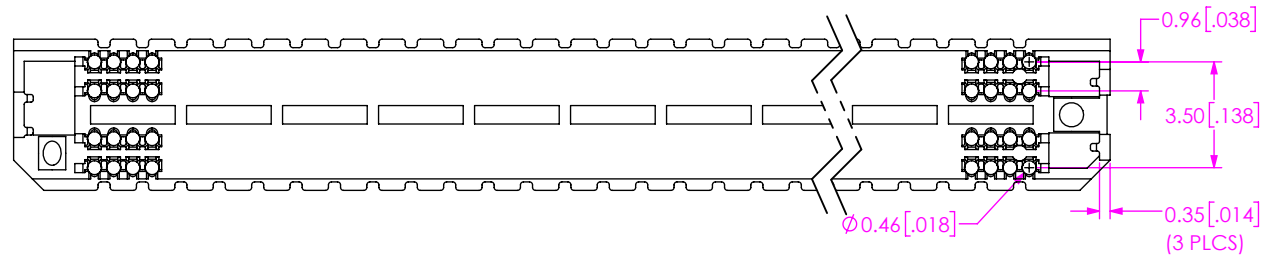
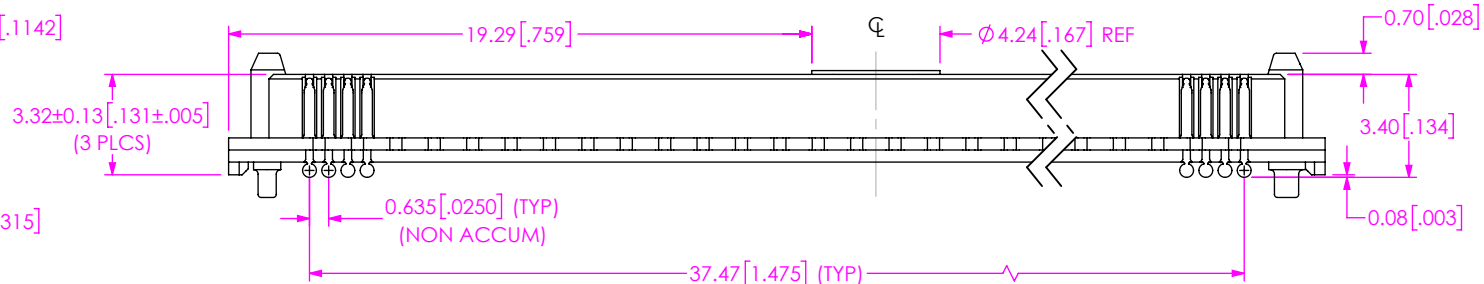
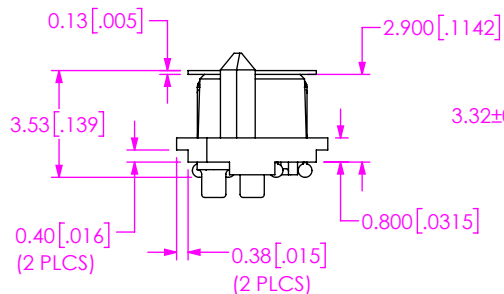
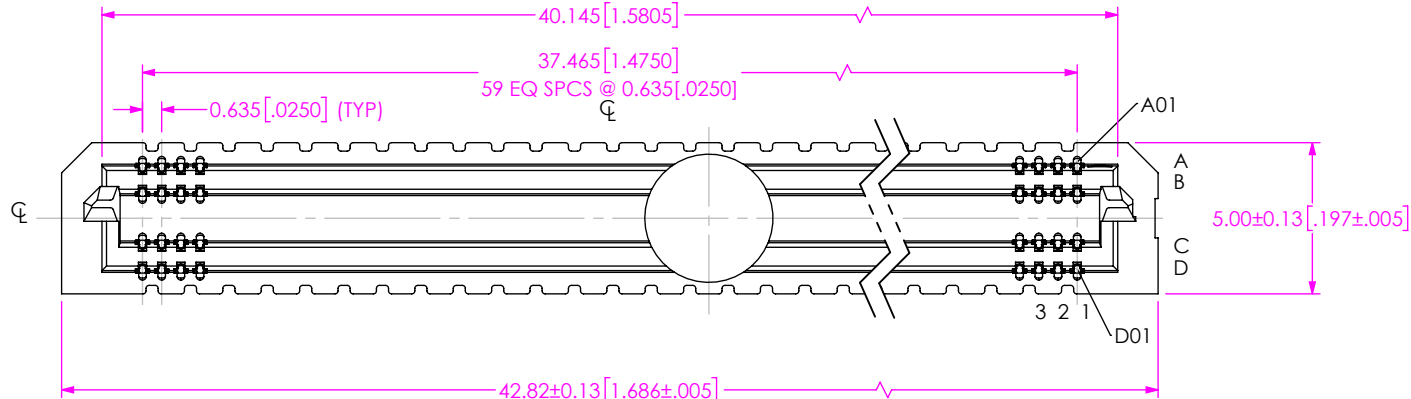
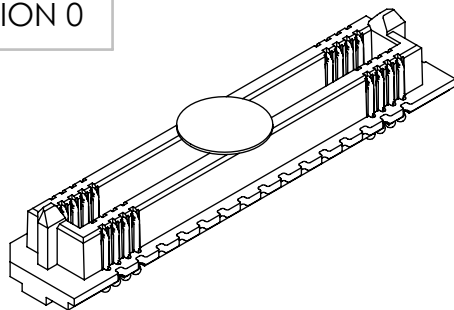


SOME CENTER FEATURES  
OMITTED FOR CLARITY



1. K-DOT PROVIDED AS STANDARD.
2. PARTS TO BE PACKAGED IN TAPE & REEL
3. ORDERS WILL BE PACKAGED ACCORDING TO THE SAMTEC PACKAGING EFFICIENCY STANDARDS (SPES) FOUND ON WWW.SAMTEC.COM
4. ATTACH LABEL-4X2 TO EACH REEL.

PROPRIETARY NOTE

THIS DOCUMENT CONTAINS CONFIDENTIAL AND PROPRIETARY INFORMATION AND ALL DESIGN, MANUFACTURING, REPRODUCTION, USE, PATENT RIGHTS AND SALES RIGHTS ARE EXPRESSLY RESERVED BY SAMTEC, INC. THIS DOCUMENT SHALL NOT BE DISCLOSED, IN WHOLE OR PART, TO ANY UNAUTHORIZED PERSON OR ENTITY NOR REPRODUCED, TRANSFERRED OR INCORPORATED IN ANY OTHER PROJECT IN ANY MANNER WITHOUT THE EXPRESS WRITTEN CONSENT OF SAMTEC, INC.

DO NOT SCALE DRAWING  
SHEET SCALE: 4:1  
MATERIAL:  
INSULATOR: LCP, COLOR BLACK  
CONTACT: COPPER ALLOY  
PLATING:  
CONTACT AREA: 10µ" SELECTIVE GOLD  
REMAINDER: MATTE TIN  
F:\DWG\SW\Ref\226000\REF-226081-01.slddrw

**samtec**

520 PARK EAST BLVD, NEW ALBANY, IN 47150  
PHONE: 812-944-6733 FAX: 812-948-5047  
e-Mail info@SAMTEC.com code 55322

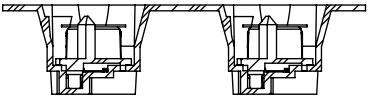
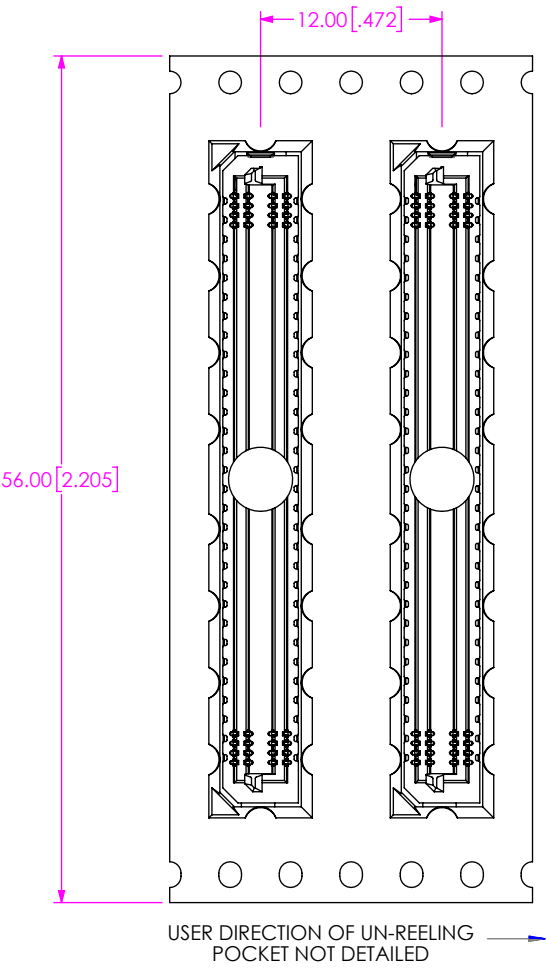
DESCRIPTION:

ADM6 ASSEMBLY


DWG. NO.

REF-226081-01

BY: J. BROWNING 01/26/2022 SHEET 1 OF 2



PACKAGING VIEW

|  |  |              |
|--|--|--------------|
| <p>• PROPRIETARY NOTE •</p> <p>THIS DOCUMENT CONTAINS CONFIDENTIAL AND PROPRIETARY INFORMATION AND ALL DESIGN, MANUFACTURING, REPRODUCTION, USE, PATENT RIGHTS AND SALES RIGHTS ARE EXPRESSLY RESERVED BY SAMTEC, INC. THIS DOCUMENT SHALL NOT BE DISCLOSED, IN WHOLE OR PART, TO ANY UNAUTHORIZED PERSON OR ENTITY NOR REPRODUCED, TRANSFERRED OR INCORPORATED IN ANY OTHER PROJECT IN ANY MANNER WITHOUT THE EXPRESS WRITTEN CONSENT OF SAMTEC, INC.</p> |  <p>520 PARK EAST BLVD, NEW ALBANY, IN 47150<br/>PHONE: 812-944-6733 FAX: 812-948-5047<br/>e-Mail: info@SAMTEC.com code 55322</p> |              |
|  | DESCRIPTION: ADM6 ASSEMBLY   |              |
|  | DWG. NO. REF-226081-01   |              |
|  | BY: J. BROWNING 01/26/2022   | SHEET 2 OF 2 |

DO NOT SCALE DRAWING

SHEET SCALE: 2:1