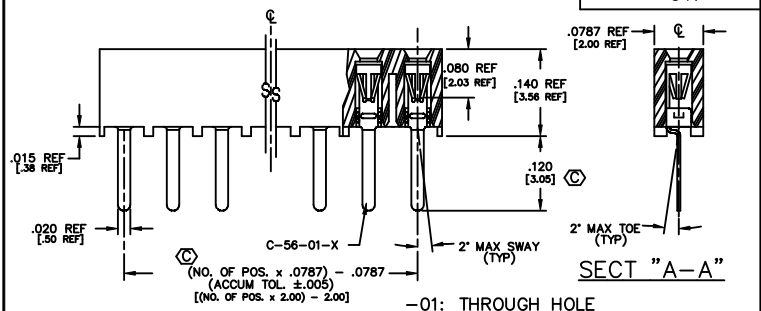
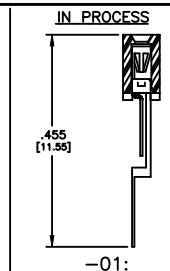
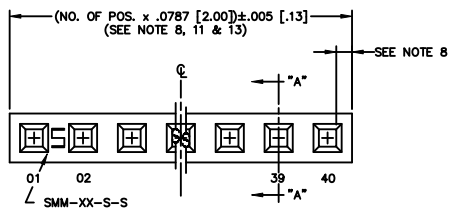
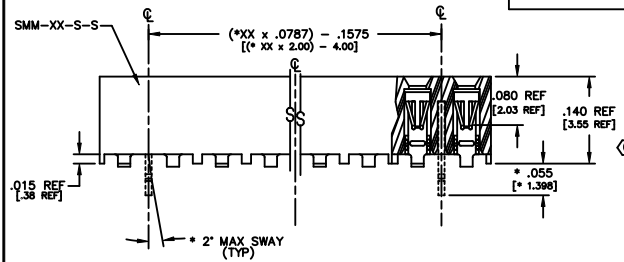
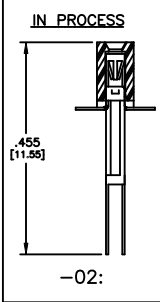
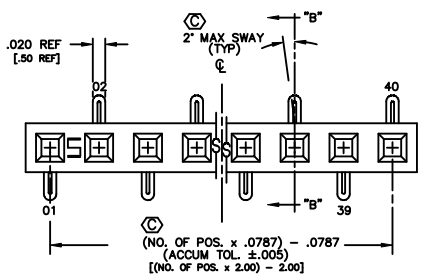


REVISION BM

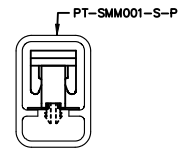
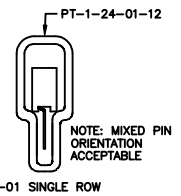


\* PINS INTERLEAVED AND ORIENTED SAME DIRECTION FOR -01 ONLY

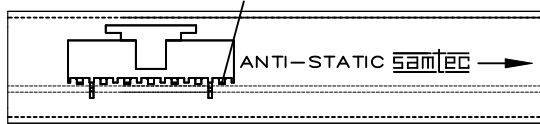


-02: SURFACE MOUNT

PACKAGE PARTS IN TUBE AS SHOWN  
(POSITION PARTS WITH POS. -01 TOWARD ARROW AS SHOWN)



-01 SINGLE ROW



NOTES:

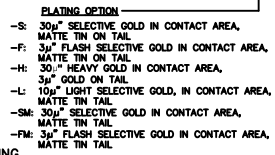
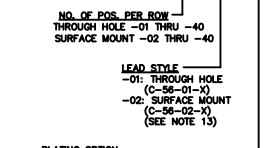
1. RETENTION FORCE IN BODY TO BE: 1 lbs. MIN
2. INSERTION FORCE TO BE: 3.0 oz. MAX.
3. WITHDRAWAL FORCE TO BE: 0.4 oz. MIN.
4.  $\varnothing$  REPRESENTS CRITICAL DIMS. FOR STATISTICAL PROCESS CONTROL.
5. [ ] DIMS ARE IN METRIC AND ARE NOT CONTROLLING DIMS.
- 6.) SMM-105-01-X THRU SMM-140-01-X MUST USE PT-1-24-01-12.
- 7.) "-LC" OPTION FOR A 02 POSITION WILL HAVE ONLY ONE LOCKING CLIP (LC-05-T).
- 8.) "END WALLS" AFTER CUTTING SHOULD BE .025±.005.
- 9.) ALL OPTIONS: PACKAGE POSITIONS -02 THRU -40 IN TUBES. LAYER PACKAGE POSITIONS -02 & -03 WITH NO OPTIONS.
- 10.) -02 THRU -05 POSITION WITH -K, -P, OR -LC TO BE PACKAGED IN -TR ONLY. -06 THRU -40 POSITION AVAILABLE IN TUBE OR -TR PACKAGING.
- 11.) MAX CUT FLASH: .010[.25]
- 12.) DUE TO THE HIGH AMOUNT OF INSERTION FORCE NEEDED, THE -LC OPTION IS NOT COMPATIBLE WITH AUTO PLACEMENT. SAMTEC RECOMMENDS MANUAL PLACEMENT FOR ALL ASSEMBLIES WITH THE -LC OPTION.
- 13.) FOR -02 LEAD STYLE: EVEN CUTS: LOSE 2 POSITIONS PER CUT; ODD CUTS: LOSE 1 POSITION PER CUT.
- 14.) INSULATOR MATERIAL: BLACK, LCP, UL 94 V0
- 15.) MAXIMUM PIN HEIGHT VARIATION: .003[.08] FROM ROW TO ROW AND PIN TO PIN, MUST BE MEASURED BETWEEN ADJACENT PINS.
- 16.) ORDERS WILL BE PACKAGED ACCORDING TO THE SAMTEC PACKAGING EFFICIENCY STANDARDS (SPES) FOUND ON WWW.SAMTEC.COM.
- 17.) ATTACH LABEL TO EACH REEL.

DIMENSIONS ARE IN INCHES UNLESS OTHERWISE NOTED TOLERANCES ARE:

ONE PLACE DECIMALS: ±.1	THREE PLACE DECIMALS: ±.005	ANGLES: ±1°
TWO PLACE DECIMALS: ±.01	FOUR PLACE DECIMALS: ±.0020	

TITLE: 2 mm SOCKET STRIP (SINGLE ROW) DWG NO: SMM-1XX-XX-XX-S-XX-XX-X-XX SHEET 1 OF 11

SMM-1XX-XX-XX-S-XX-XX-X-XX



PACKAGING: BLANK TUBES (SEE NOTE 9), -TR: TUBE & REEL (SEE NOTES 18 & 17), -FR: FULL REEL CITY TAPE & REEL (SEE NOTES 16 & 17), (-XR MAX POSITIONS AVAILABLE: 27 VERTICAL / 28 HORIZONTAL)

OPTION: -P: PICK & PLACE PAD (USE PPP-09), -K: POLYIMIDE FILM PAD (.005 [0.13] THICKNESS) [2 POS MIN, SEE NOTE 10] (USE K-DOT-.118-.219-.005)

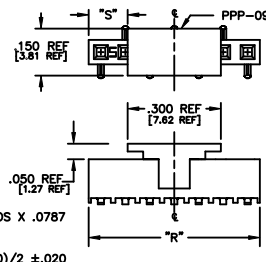
POLARIZING OPTION: INDICATE POSITION (USE PK-07-N), -LC: LOCKING CLIP (USE 2 LC-05-TM (AVAILABLE ONLY WITH LEAD STYLE -02. SEE DIMS) (SEE NOTES 7 & 12)

ROW OPTION: -S: SINGLE ROW (USE SMM-XX-S-S)

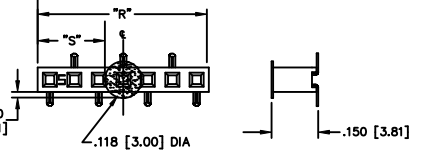
TUBE PACKAGING TABLE

LEAD STYLE	TUBE	PLUG
-01	PT-1-24-01-12	TP-12
-01-P	PT-1-24-02-29	TP-24
-02		
-02-K, -02-LC, -02-LC-K	PT-SMM002-S-K	TP-24-02
-02-P	PT-SMM001-S-P	TP-24

-K: POLYIMIDE FILM PAD [2 POSITION MINIMUM, SEE NOTE 10]



NOTE: "R" = USED MEASURED DIMENSION (REF), "S" = ("R" - .118 [3.0]) / 2 ±.020 [0.51]



-P: PICK AND PLACE PAD (PLACE PPP-09 ABOUT C.L. AS SHOWN)

1/2 SCALE

DISPROVING ASSEMBLY ONLY SMM-1XX-XX-XX-S-XX-XX-X-XX

**samtec**

520 PARK EAST BLVD. NEW ALBANY, INDIANA 47150  
PHONE (812) 944-6733 P.O. BOX 1147  
CODE 55322

MADE BY: WATT KOLB S-22-01  
DESIGNED BY: MCCARTIN

DATE: 11/11/01

SHEET 1 OF 11