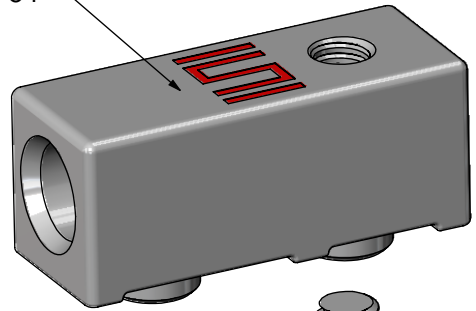
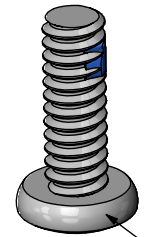


GP-S-01-01

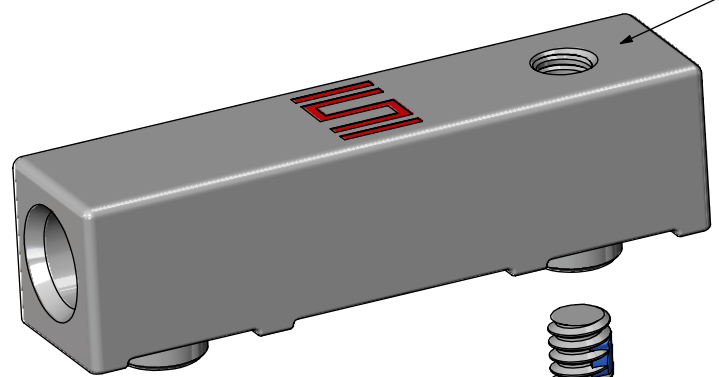


DESIGNED & DIMENSIONED
IN INCHES[MILLIMETERS]

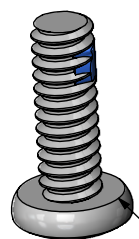
GPSK-01-01 SHOWN



MS-05-02-L



GP-S-02-01



MS-05-02-L



MS-XX-02-L

GPSK-02-01-X SHOWN

GPSK-XX-XX-X

SOCKET

LEAD STYLE
-01: 4 THRU 10 ROW SEAF-RA
-02: 4 THRU 10 ROW SEAF-RA

SCREW OPTION
(-02 LEAD STYLE ONLY)
(SEE NOTE 2)
-1: USE WITH .062 THICK PCB
-2: USE WITH .093 & .125 THICK PCB
THREADING
-01: M3 x 0.5

TABLE 1		
	"A"	"B"
MS-03-02-L	.193	.118
MS-04-02-L	.232	.157
MS-05-02-L	.389	.315

TABLE 2		
	"C"	"D"
GP-S-01-01	0.75	.375
GP-S-02-01	1.20	.800

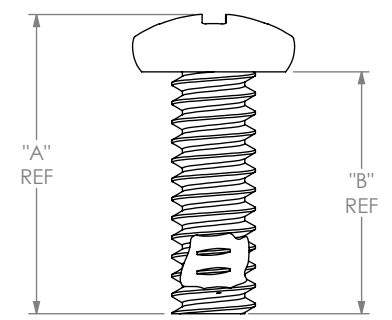


FIG 1
MS-XX-02-L

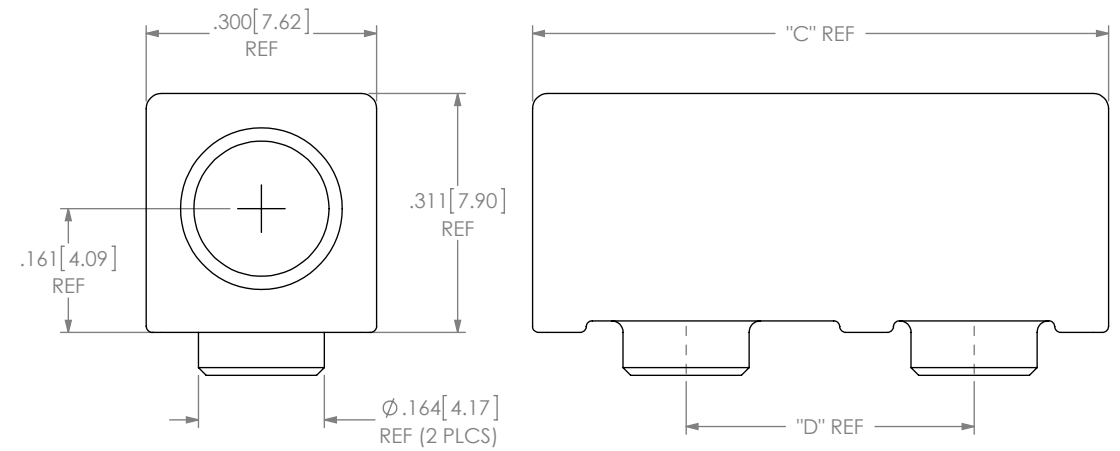


FIG 2
GP-S-XX-01

NOTES:

- PARTS TO BE PACKAGED IN BAGS AS A KIT.
- GPSK-01-01 KIT TO INCLUDE ONE GPSK-S-01-01 AND ONE MS-05-02-L.
GPSK-02-01-1 KIT TO INCLUDE ONE GP-S-02-01, ONE MS-05-02-L AND ONE MS-03-02-L.
GPSK-02-01-2 KIT TO INCLUDE ONE GP-S-02-01, ONE MS-05-02-L AND ONE MS-04-02-L.
- PARTS TO BE USED WITH PCB THICKNESSES OF .062 TO .125.

UNLESS OTHERWISE SPECIFIED,
DIMENSIONS ARE IN INCHES.
TOLERANCES ARE:
DECIMALS ANGLES
.XX: ±.01 [.3] 2°
.XXX: ±.005 [.13]
.XXXX: ±.0020 [.051]

PROPRIETARY NOTE
THIS DOCUMENT CONTAINS CONFIDENTIAL AND
PROPRIETARY INFORMATION AND ALL DESIGN,
MANUFACTURING, REPRODUCTION, USE, PATENT RIGHTS
AND SALES RIGHTS ARE EXPRESSLY RESERVED BY SAMTEC,
INC. THIS DOCUMENT SHALL NOT BE DISCLOSED, IN WHOLE
OR PART, TO ANY UNAUTHORIZED PERSON OR ENTITY NOR
REPRODUCED, TRANSFERRED OR INCORPORATED IN ANY
OTHER PROJECT IN ANY MANNER WITHOUT THE EXPRESS
WRITTEN CONSENT OF SAMTEC, INC.

MATERIAL: DO NOT SCALE DRAWING
SOCKET: ZAMAK 3
SCREW: 303 STAINLESS STEEL

SHEET SCALE: 3:1



520 PARK EAST BLVD, NEW ALBANY, IN 47150
PHONE: 812-944-6733 FAX: 812-948-5047
e-Mail: info@SAMTEC.com code 55322

DESCRIPTION:
SEAF - RA GPK OPTION KIT

DWG. NO.
GPSK-XX-XX-X

BY: VICKY Z 12/23/2010 SHEET 1 OF 1