

**DESIGNED & DIMENSIONED
IN MILLIMETERS [INCHES]**

DO NOT
SCALE FROM
THIS PRINT

MEC5-XXX-XX-X-RA-XX-TR

No OF POSITIONS (PER ROW)

-030, -040, -050,
-060, -070, -080

TAPE & REEL

**OPTION
(REQUIRED)**

-W1: WELD TAB THROUGH HOLE
(SEE FIG 2, SHT 3)
-W2: WELD TAB SURFACE MOUNT
(SEE FIG 1)

CARD THICKNESS

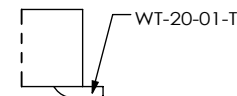
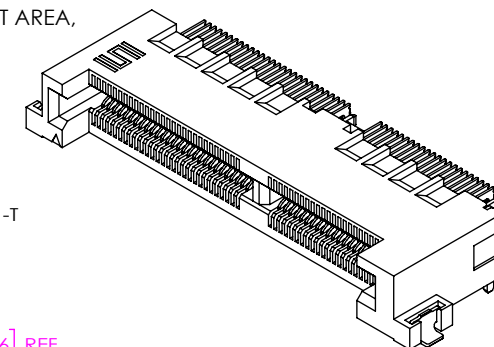
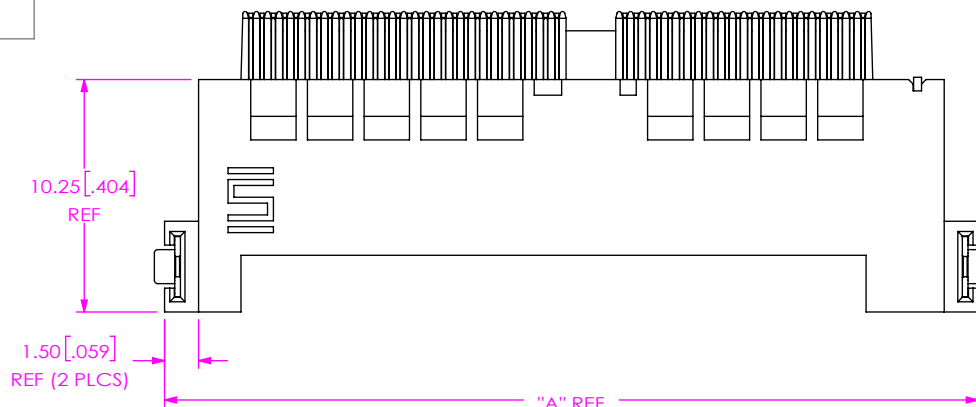
-01: FOR .062" THICK BOARD

PLATING SPECIFICATION

-L: 10µ" GOLD IN CONTACT AREA,
MATTE TIN TAIL
-S: 30µ" GOLD IN CONTACT AREA,
MATTE TIN TAIL

ROW SPECIFICATION

-RA: RIGHT ANGLE



**DETAIL 'A'
SCALE 6:1**

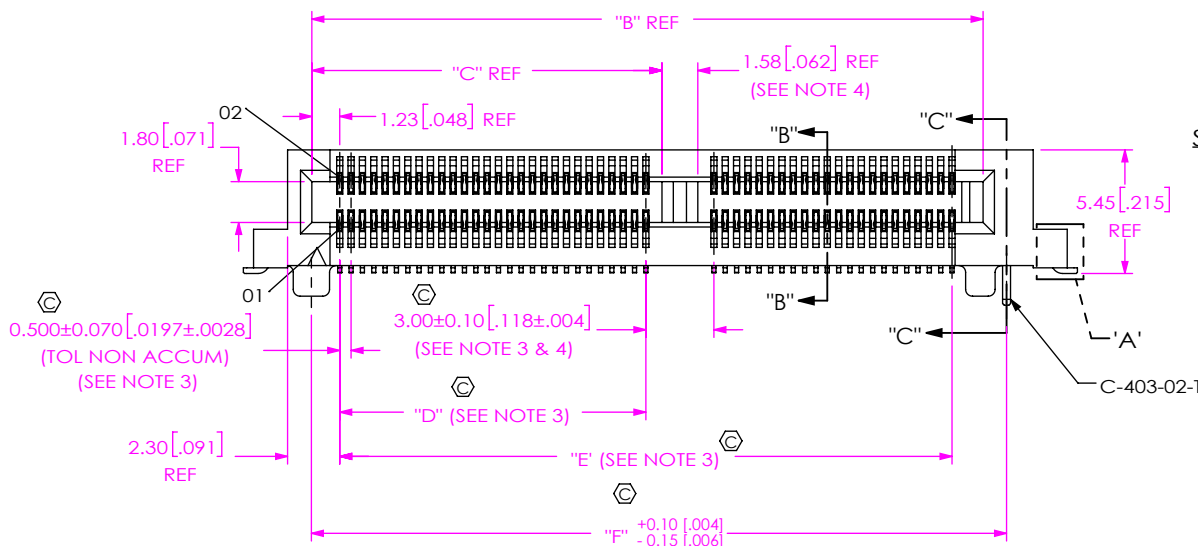


TABLE 1

| NO OF POS | "A" | "B" | "C" |
|-----------|---------------|---------------|---------------|
| -030 | 23.38 [0.920] | 17.10 [0.673] | N/A |
| -040 | 28.38 [1.117] | 22.10 [0.870] | N/A |
| -050 | 35.88 [1.413] | 29.60 [1.165] | 15.44 [0.608] |
| -060 | 40.88 [1.609] | 34.60 [1.362] | 17.94 [0.706] |
| -070 | 45.88 [1.806] | 39.60 [1.559] | 20.44 [0.805] |
| -080 | 50.88 [2.003] | 44.60 [1.756] | 22.94 [0.903] |

| NO OF POS | "D" | "E" | "F" |
|-----------|---------------|---------------|---------------|
| -030 | N/A | 14.50 [0.571] | 18.16 [0.715] |
| -040 | N/A | 19.50 [0.768] | 23.16 [0.912] |
| -050 | 13.50 [0.531] | 27.00 [1.063] | 30.66 [1.207] |
| -060 | 16.00 [0.630] | 32.00 [1.260] | 35.66 [1.404] |
| -070 | 18.50 [0.728] | 37.00 [1.457] | 40.66 [1.601] |
| -080 | 21.00 [0.827] | 42.00 [1.654] | 45.66 [1.798] |

**FIG 1
MEC5-050-01-X-D-RA-W2-TR SHOWN**

NOTES:

- ⊗ REPRESENTS A CRITICAL DIMENSION.
- MINIMUM PUSHOUT FORCE: 0.5 LBS FOR C-401, WT-20, WT-51; 1.0 LBS FOR C-403.
- MEASURE BOTH TOP AND BOTTOM ROWS.
- POLARIZATION RIB IS NOT PRESENT ON -030 & -040 POSITIONS.
- FOR QUANTITIES UP TO 49 PCS., NO LEADER, TRAILER OR REEL WILL BE SUPPLIED.
FOR QUANTITIES OF 50-124 PCS., NO LEADER OR TRAILER WILL BE SUPPLIED,
SPICES MAY BE PRESENT.

**UNLESS OTHERWISE SPECIFIED,
DIMENSIONS ARE IN MILLIMETERS.**

TOLERANCES ARE:

DECIMALS ANGLES
X.X: ±0.3 [.01] 2°
X.XX: ±0.10 [.004]
X.XXX: ±0.051 [.0020]

PROPRIETARY NOTE

THIS DOCUMENT CONTAINS CONFIDENTIAL AND PROPRIETARY INFORMATION AND ALL DESIGN, MANUFACTURING, REPRODUCTION, USE, PATENT RIGHTS AND SALES RIGHTS ARE EXPRESSLY RESERVED BY SAMTEC, INC. THIS DOCUMENT SHALL NOT BE DISCLOSED, IN WHOLE OR PART, TO ANY UNAUTHORIZED PERSON OR ENTITY NOR REPRODUCED, TRANSFERRED OR INCORPORATED IN ANY OTHER PROJECT IN ANY MANNER WITHOUT THE EXPRESS WRITTEN CONSENT OF SAMTEC, INC.

MATERIAL: DO NOT SCALE DRAWING SHEET SCALE: 3:1
INSULATOR: LCP, UL 94 V0, COLOR: BLACK
CONTACT: CU ALLOY
WELD TAB: BRASS ALLOY

F:\DWG\MISC\MKTG\MECS-XXX-XX-X-RA-XX-TR-MKT.SLDDRW

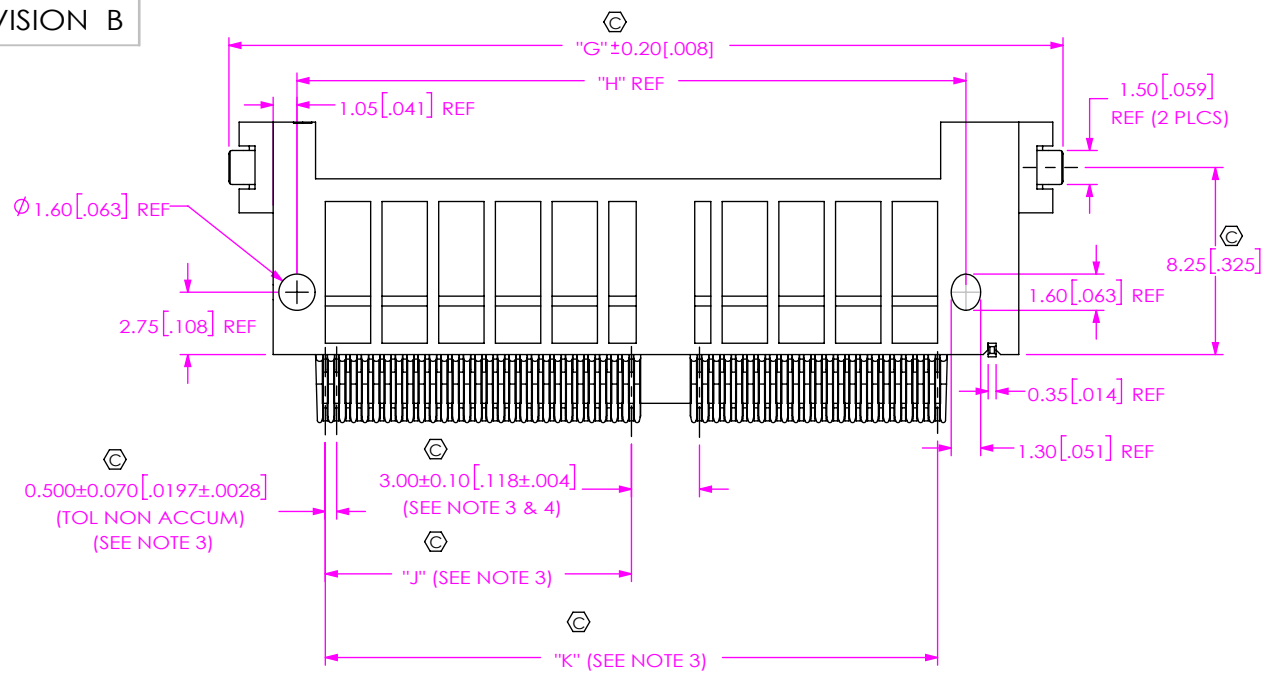


520 PARK EAST BLVD. NEW ALBANY, IN 47150
PHONE: 812-944-6733 FAX: 812-948-5047
e-Mail: info@SAMTEC.com code 55322

DESCRIPTION:
0.5mm HIGH SPEED EDGE CARD ASSEMBLY

DWG. NO.
MEC5-XXX-XX-X-RA-XX-TR

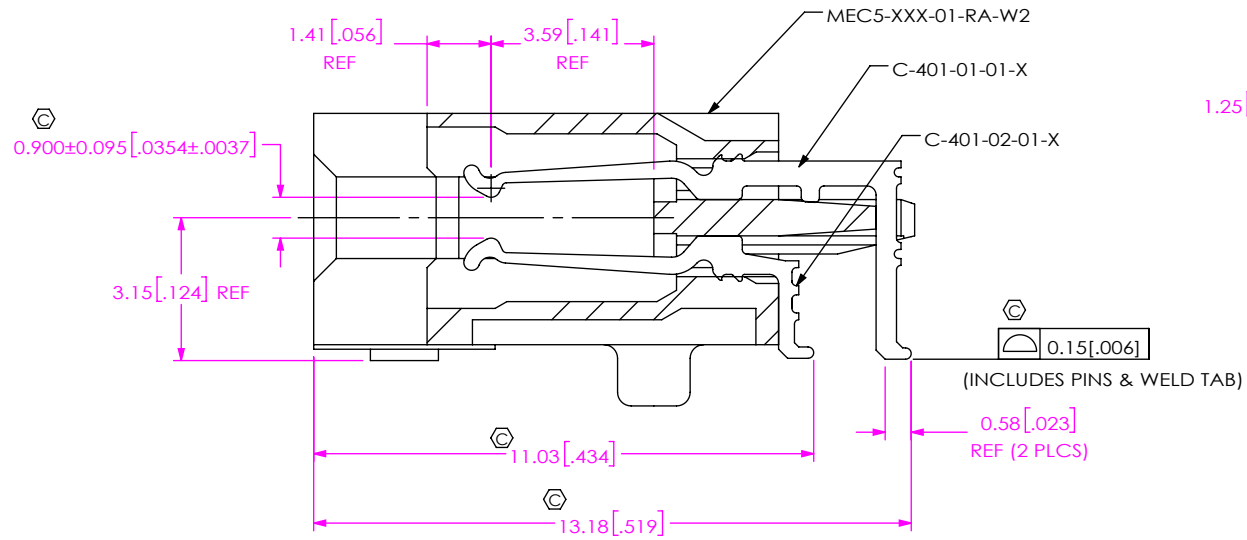
BY: JESSIE W 6/3/2015 SHEET 1 OF 4



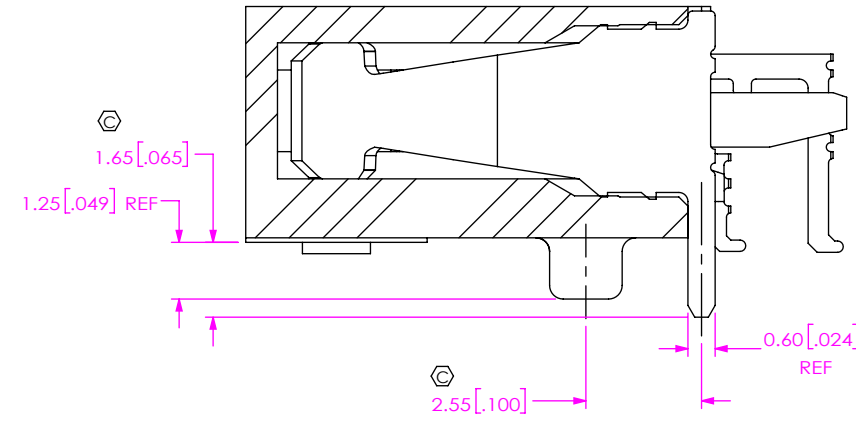
BOTTOM VIEW

| TABLE 2 | | |
|-----------|---------------|---------------|
| NO OF POS | "G" | "H" |
| -030 | 24.28 [0.956] | 17.00 [0.669] |
| -040 | 29.28 [1.153] | 22.00 [0.866] |
| -050 | 36.78 [1.448] | 29.50 [1.161] |
| -060 | 41.78 [1.645] | 34.50 [1.358] |
| -070 | 46.78 [1.842] | 39.50 [1.555] |
| -080 | 51.78 [2.039] | 44.50 [1.752] |

| NO OF POS | "J" | "K" |
|-----------|---------------|---------------|
| -030 | N/A | 14.50 [0.571] |
| -040 | N/A | 19.50 [0.768] |
| -050 | 13.50 [0.531] | 27.00 [1.063] |
| -060 | 16.00 [0.630] | 32.00 [1.260] |
| -070 | 18.50 [0.728] | 37.00 [1.457] |
| -080 | 21.00 [0.827] | 42.00 [1.654] |



SECTION "B"- "B"
SCALE 6 : 1



SECTION "C"- "C"
SCALE 6 : 1

PROPRIETARY NOTE
 THIS DOCUMENT CONTAINS CONFIDENTIAL AND PROPRIETARY INFORMATION AND ALL DESIGN, MANUFACTURING, REPRODUCTION, USE, PATENT RIGHTS AND SALES RIGHTS ARE EXPRESSLY RESERVED BY SAMTEC, INC. THIS DOCUMENT SHALL NOT BE DISCLOSED, IN WHOLE OR IN PART, TO ANY UNAUTHORIZED PERSON OR ENTITY NOR REPRODUCED, TRANSFERRED OR INCORPORATED IN ANY OTHER PROJECT IN ANY MANNER WITHOUT THE EXPRESS WRITTEN CONSENT OF SAMTEC, INC.

DO NOT SCALE DRAWING
 SHEET SCALE: 3:1



520 PARK EAST BLVD, NEW ALBANY, IN 47150
 PHONE: 812-944-6733 FAX: 812-948-5047
 e-Mail info@SAMTEC.com code 55322

DESCRIPTION:
 0.5mm HIGH SPEED EDGE CARD ASSEMBLY
 DWG. NO.

MEC5-XXX-XX-X-RA-XX-TR

BY: JESSIE W 6/3/2015 SHEET 2 OF 4

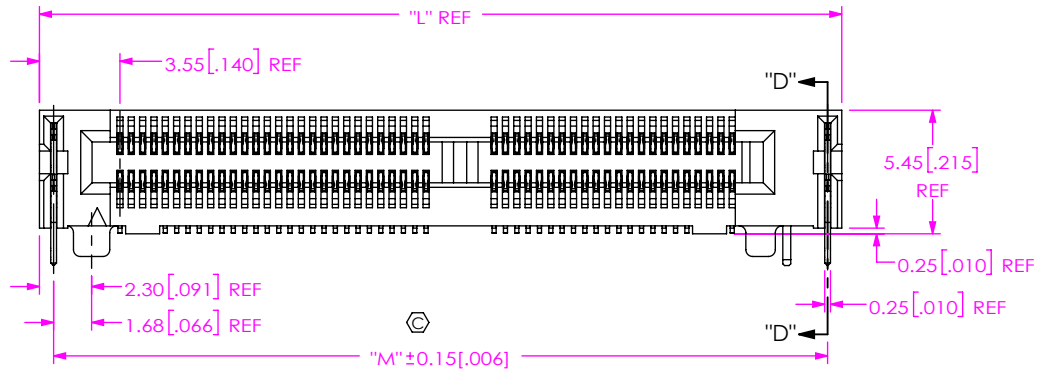
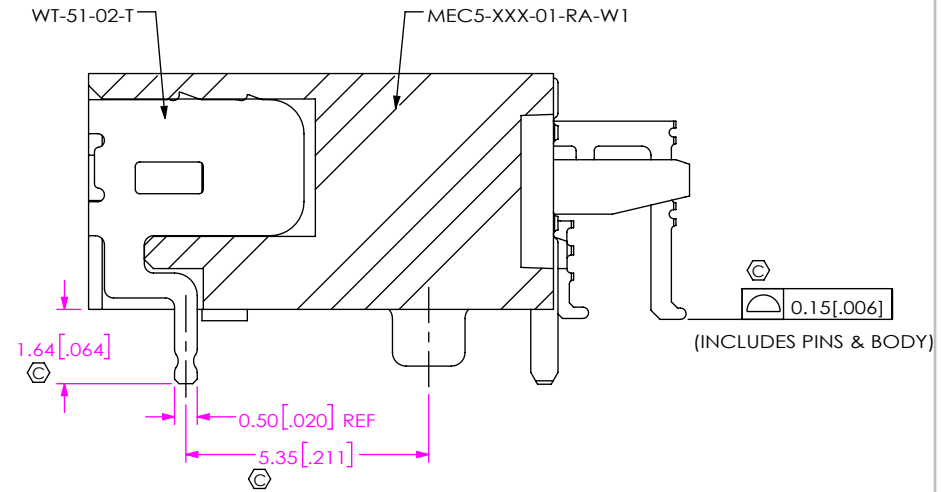
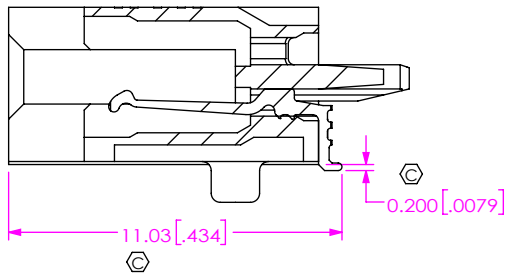


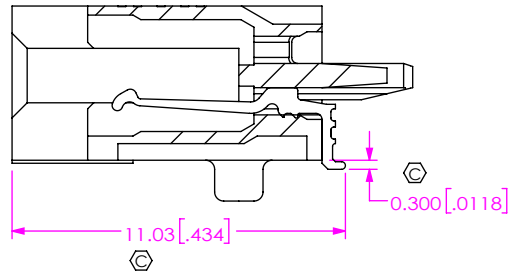
FIG 2
MEC5-050-01-X-D-RA-W1-TR SHOWN
(DIFFERENT AS SHOWN, OTHERWISE SAME AS FIG 1)



SECTION "D"-"D"
SCALE 6 : 1



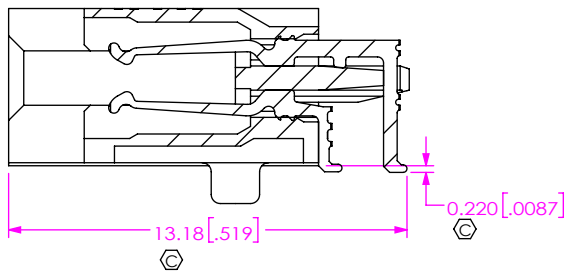
IN-PROCESS 1 FOR W1
FILL C-401-02-01-X



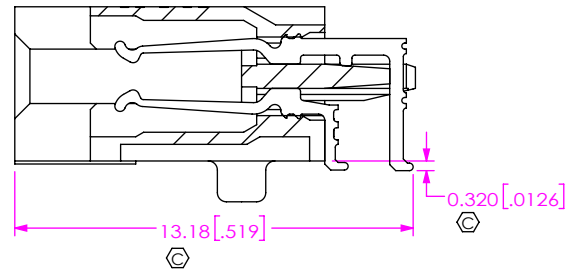
IN-PROCESS 1 FOR W2
FILL C-401-02-01-X

TABLE 3

| NO OF POS | "L" | "M" |
|-----------|---------------|---------------|
| -030 | 22.88 [0.901] | 21.63 [0.852] |
| -040 | 27.88 [1.098] | 26.63 [1.048] |
| -050 | 35.38 [1.393] | 34.13 [1.344] |
| -060 | 40.38 [1.590] | 39.13 [1.541] |
| -070 | 45.38 [1.787] | 44.13 [1.737] |
| -080 | 50.38 [1.983] | 49.13 [1.934] |



IN-PROCESS 2 FOR W1
FILL C-401-01-01-X



IN-PROCESS 2 FOR W2
FILL C-401-01-01-X

PROPRIETARY NOTE
THIS DOCUMENT CONTAINS CONFIDENTIAL AND PROPRIETARY INFORMATION AND ALL DESIGN, MANUFACTURING, REPRODUCTION, USE, PATENT RIGHTS AND SALES RIGHTS ARE EXPRESSLY RESERVED BY SAMTEC, INC. THIS DOCUMENT SHALL NOT BE DISCLOSED, IN WHOLE OR PART, TO ANY UNAUTHORIZED PERSON OR ENTITY NOR REPRODUCED, TRANSFERRED OR INCORPORATED IN ANY OTHER PROJECT IN ANY MANNER WITHOUT THE EXPRESS WRITTEN CONSENT OF SAMTEC, INC.

DO NOT SCALE DRAWING

SHEET SCALE: 3:1

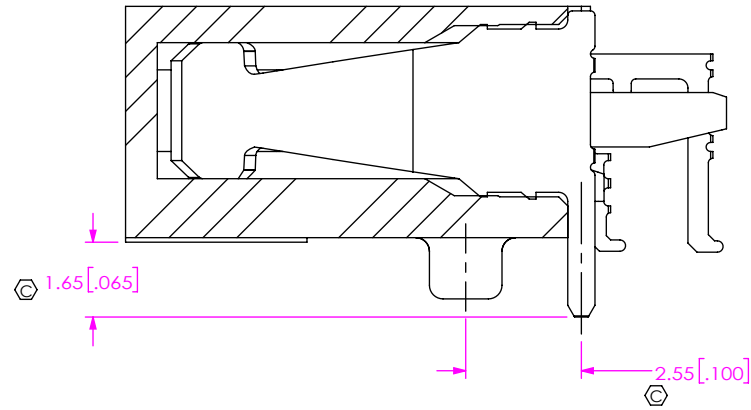


520 PARK EAST BLVD, NEW ALBANY, IN 47150
PHONE: 812-944-6733 FAX: 812-948-5047
e-Mail info@SAMTEC.com code 55322

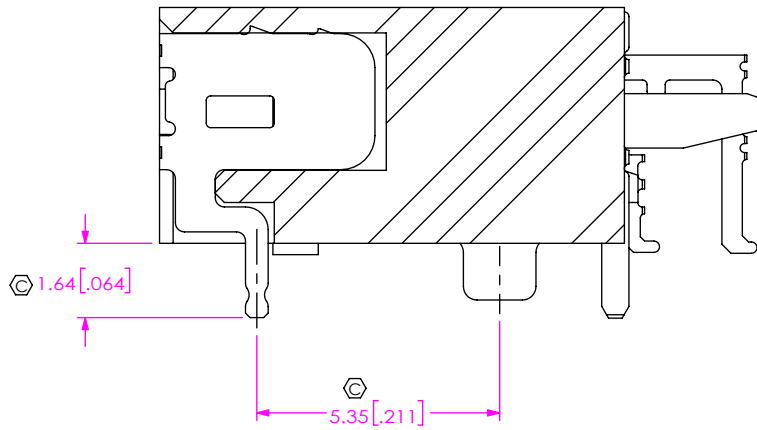
DESCRIPTION:
0.5mm HIGH SPEED EDGE CARD ASSEMBLY

DWG. NO.
MEC5-XXX-XX-X-RA-XX-TR

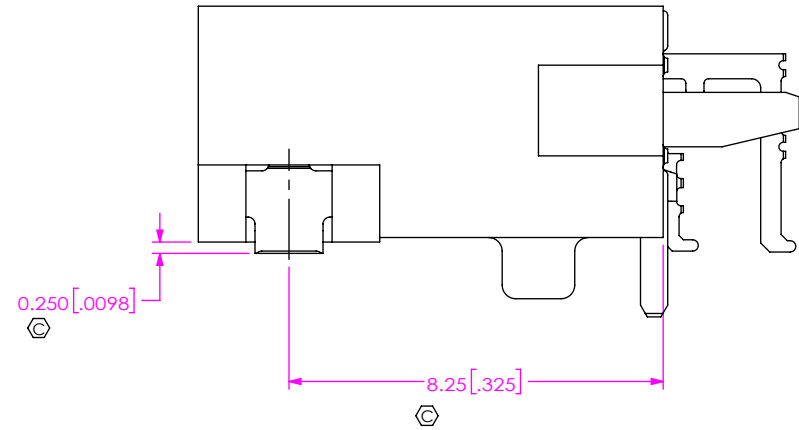
BY: JESSIE W 6/3/2015 SHEET 3 OF 4




IN-PROCESS 3
FILL C-403-02-T



IN-PROCESS 4 FOR W1
FILL WT-51-02-T



IN-PROCESS 4 FOR W2
FILL WT-20-01-T

| | |
|---|--|
| <p>PROPRIETARY NOTE</p> <p>THIS DOCUMENT CONTAINS CONFIDENTIAL AND PROPRIETARY INFORMATION AND ALL DESIGN, MANUFACTURING, REPRODUCTION, USE, PATENT RIGHTS AND SALES RIGHTS ARE EXPRESSLY RESERVED BY SAMTEC, INC. THIS DOCUMENT SHALL NOT BE DISCLOSED, IN WHOLE OR PART, TO ANY UNAUTHORIZED PERSON OR ENTITY NOR REPRODUCED, TRANSFERRED OR INCORPORATED IN ANY OTHER PROJECT IN ANY MANNER WITHOUT THE EXPRESS WRITTEN CONSENT OF SAMTEC, INC.</p> |  <p>520 PARK EAST BLVD, NEW ALBANY, IN 47150 PHONE: 812-944-6733 FAX: 812-948-5047 e-Mail: info@SAMTEC.com code 55322</p> |
| <p>SHEET SCALE: 3:1</p> | <p>DESCRIPTION: 0.5mm HIGH SPEED EDGE CARD ASSEMBLY DWG. NO. MEC5-XXX-XX-X-RA-XX-TR BY: JESSIE W 6/3/2015 SHEET 4 OF 4</p> |