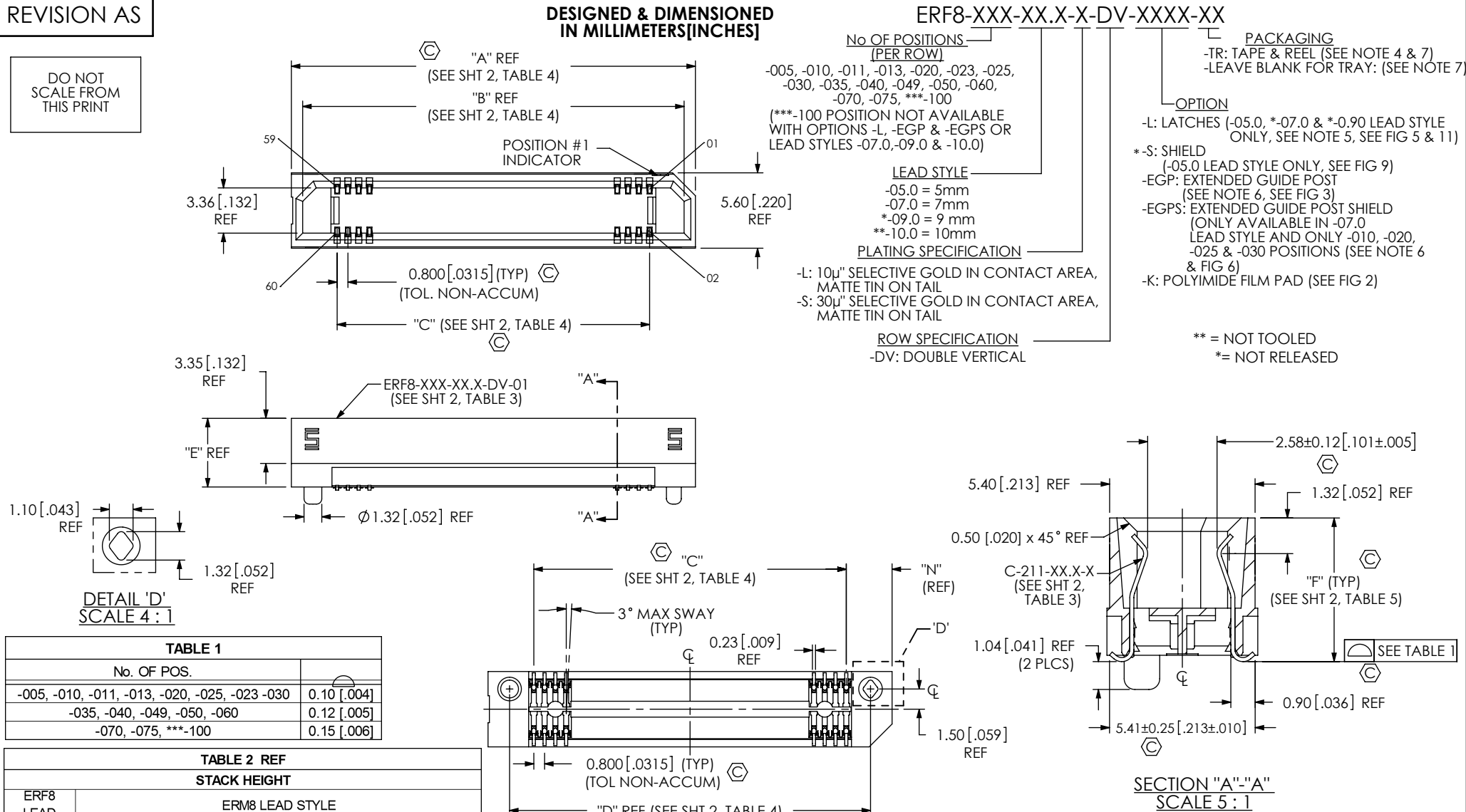


DO NOT
SCALE FROM
THIS PRINT



(** = NOT TOOLED) (* = NOT RELEASED)

- NOTES:
1. © REPRESENTS A CRITICAL DIMENSION.
 2. BURR ALLOWANCE: 0.038[.0015] MAX.
 3. MINIMUM PUSHOUT FORCE: 2.22 N [5 LB.]
 4. FOR QUANTITIES UP TO 49 PIECES, NO LEADER, TRAILER, OR EIA-481-D REEL WILL BE SUPPLIED. FOR QUANTITIES OF 50-124 PIECES, NO LEADER, TRAILER WILL BE SUPPLIED.
 5. NOT AVAILABLE WITH -EGP OR -EGPS OPTIONS.
 6. OPTION ONLY AVAILABLE ON -07.0 LEAD STYLE; NOT AVAILABLE WITH -L OPTION.
 7. TRAY PACKAGING AVAILABLE ON ***100 POSITION ONLY. ***100 POSITION NOT AVAILABLE IN -TR.
 8. NOTE DELETED.
 9. NOT AVAILABLE WITH -EGP OR -EGPS OPTIONS.

UNLESS OTHERWISE SPECIFIED,
DIMENSIONS ARE IN
MILLIMETERS [INCHES].
TOLERANCES ARE:
DECIMALS ANGLES
X.X: ±0.3 [.01]
X.XX: ±0.13 [.005]
X.XXX: ±0.050 [.0020]

PROPRIETARY NOTE
THIS DOCUMENT CONTAINS CONFIDENTIAL AND
PROPRIETARY INFORMATION AND ALL DESIGN,
MANUFACTURING, REPRODUCTION, USE, PATENT RIGHTS
AND SALES RIGHTS ARE EXPRESSLY RESERVED BY SAMTEC,
INC. THIS DOCUMENT SHALL NOT BE DISCLOSED, IN WHOLE
OR PART, TO ANY UNAUTHORIZED PERSON OR ENTITY NOR
REPRODUCED, TRANSFERRED OR INCORPORATED IN ANY
OTHER PROJECT IN ANY MANNER WITHOUT THE EXPRESS
WRITTEN CONSENT OF SAMTEC, INC.

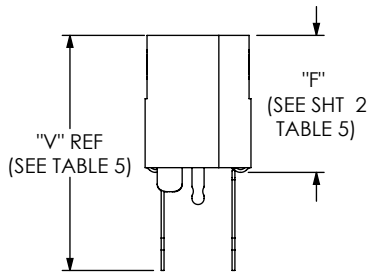
MATERIAL: DO NOT SCALE DRAWING
INSULATOR: LCP, COLOR: BLACK
CONTACT & LATCHES: BeCu
SHIELD: PHOS BRONZE

SHEET SCALE: 2:1

DESCRIPTION:
0.8MM EDGE RATE SOCKET ASSEMBLY
DWG. NO.
ERF8-XXX-XX.X-X-DV-XXXX-XX
BY: KNOWLDEN 9/26/2005 **SHEET 1 OF 7**

samtec
520 PARK EAST BLVD, NEW ALBANY, IN 47150
PHONE: 812-944-6733 FAX: 812-948-5047
e-Mail: info@SAMTEC.com code 55322

REVISION AS



IN-PROCESS

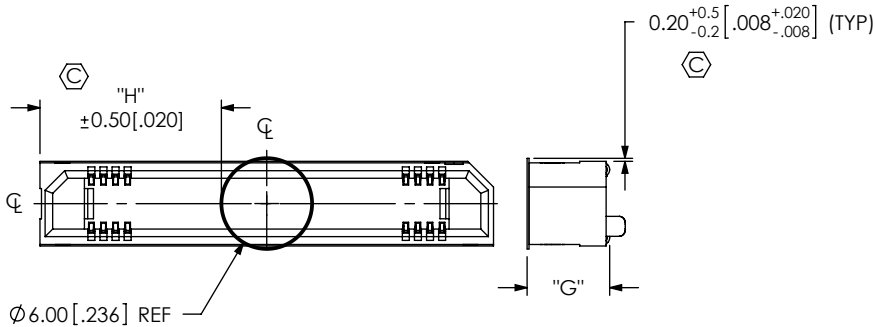
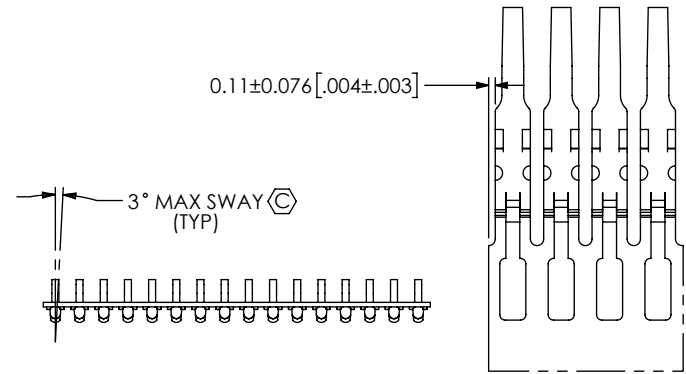


FIG 2
-K OPTION
(USE K-DOT-.236-.343-.005)
(ERF8-030-XX.X-X-DV-K SHOWN)



C-211-XX.X-X IN-PROCESS VIEW

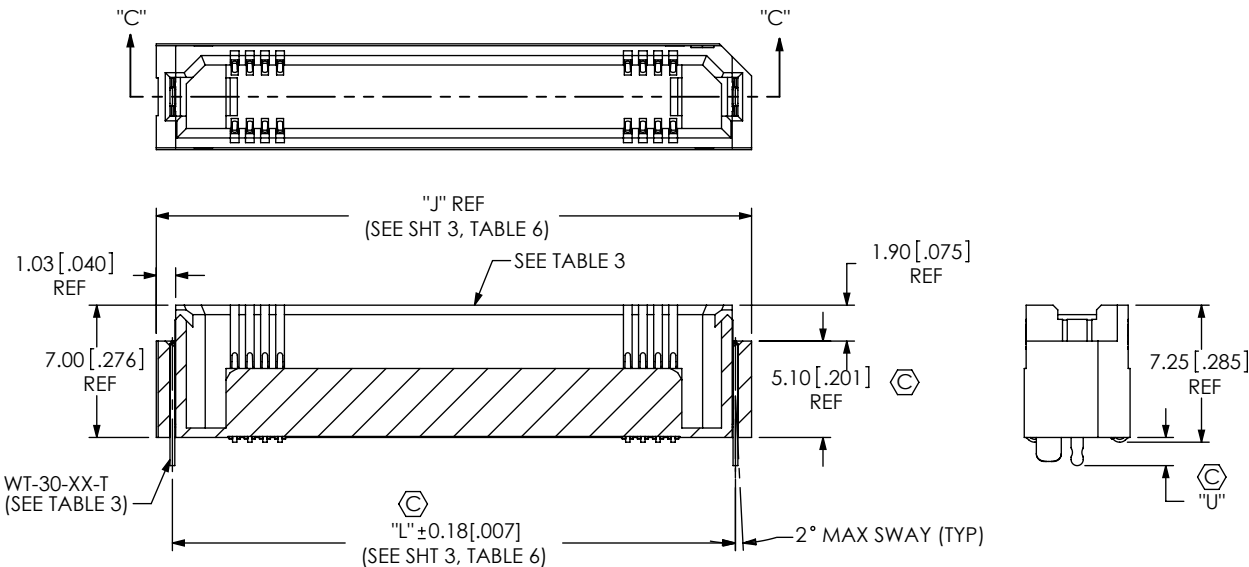


FIG 3
SECTION "C"-K OPTION
(SAME AS FIG 2, EXCEPT AS SHOWN)
(AVAILABLE ON -.07.0 LEAD STYLE ONLY)
(CENTER FEATURES REMOVED FOR CLARITY)

| TABLE 3 | | | | | |
|---------|----------|---|--------------|--------------|-------------|
| OPTION | STYLE | ERF8-XXX-XX.X-DV-XX | C-211-XX.X-X | WT-30-01-F | "U" |
| NONE | -05.0 | ERF8-XXX-05.0-DV-01 | C-211-05.0-X | N.A. | N.A. |
| | -07.0 | ERF8-XXX-07.0-DV-01 | C-211-07.0-X | | |
| | *-09.0 | ERF8-XXX-05.0-DV-S1/ ERF8H-XXX-04.0-DV | C-211-09.0-X | WT-30-08-F | 1.64 [.065] |
| | **-.10.0 | ERF8-XXX-05.0-DV-S1/ ERF8H-XXX-05.0-DV | C-211-01.0-X | WT-30-11-F | 1.64 [.065] |
| -L | -05.0 | ERF8-XXX-05.0-DV-L | C-211-05.0-X | WT-30-01-F | 1.17 [.046] |
| | *-07.0 | ERF8-XXX-07.0-DV-L | C-211-07.0-X | WT-30-09-F | 1.65 [.065] |
| | *-09.0 | ERF8-XXX-05.0-DV-S1/ ERF8H-XXX-04.0-DV | C-211-09.0-X | WT-30-10-F | 1.64 [.065] |
| | *-S | ERF8-XXX-05.0-DV-S | C-211-05.0-X | SH29-XX-07-X | 1.63 [.064] |
| -EGP | -07.0 | ERF8-XXX-07.0-DV-EGP | C-211-07.0-X | WT-30-02-F | 1.17 [.046] |
| -EGPS | -07.0 | ERF8-XXX-07.0-DV-EGPS | C-211-07.0-X | SH29-XX-01-X | 1.17 [.046] |

(** = NOT TOOLED) (* = NOT RELEASED)

| TABLE 4 | | | | | |
|----------|---------------|---------------|-----------------|---------------|---------------|
| POSITION | "A" | "B" | "C" | "D" | "H" |
| -005 | 10.00 [.394] | 8.32 [.328] | 3.200 [.1260] | 6.80 [.268] | 2.00 [.079] |
| -010 | 14.00 [.551] | 12.32 [.485] | 7.200 [.2835] | 10.80 [.425] | 4.00 [.157] |
| -011 | 14.80 [.583] | 13.12 [.517] | 8.000 [.3150] | 11.60 [.457] | 4.40 [.173] |
| -013 | 16.40 [.646] | 14.72 [.580] | 9.600 [.3780] | 13.20 [.520] | 5.20 [.205] |
| -020 | 22.00 [.866] | 20.32 [.800] | 15.200 [.5984] | 18.80 [.740] | 8.00 [.315] |
| -023 | 24.40 [.961] | 22.72 [.894] | 17.600 [.6929] | 21.20 [.835] | 10.40 [.409] |
| -025 | 26.00 [1.024] | 24.32 [.957] | 19.200 [.7559] | 22.80 [.898] | 10.00 [.394] |
| -030 | 30.00 [1.181] | 28.32 [1.115] | 23.200 [.9134] | 26.80 [1.055] | 12.00 [.472] |
| -035 | 34.00 [1.339] | 32.32 [1.272] | 27.200 [1.0708] | 30.80 [1.213] | 14.00 [.551] |
| -040 | 38.00 [1.496] | 36.32 [1.423] | 31.200 [1.2283] | 34.80 [1.370] | 16.00 [.630] |
| -049 | 45.20 [1.780] | 43.52 [1.713] | 38.400 [1.5118] | 42.00 [1.654] | 19.60 [.772] |
| -050 | 46.00 [1.811] | 44.32 [1.745] | 39.200 [1.5433] | 42.80 [1.685] | 20.00 [.787] |
| -060 | 54.00 [2.126] | 52.32 [2.060] | 47.200 [1.8583] | 50.80 [2.000] | 24.00 [.945] |
| -070 | 62.00 [2.441] | 60.32 [2.375] | 55.200 [2.1732] | 58.80 [2.315] | 28.00 [1.102] |
| -075 | 66.00 [2.598] | 64.32 [2.532] | 59.200 [2.3307] | 62.80 [2.472] | 30.00 [1.181] |
| ***-100 | 86.00 [3.386] | 84.32 [3.320] | 79.200 [3.1181] | 82.80 [3.260] | 40.00 [1.575] |

| TABLE 5 | | | | |
|--------------------------------------|--------------|----------------|--------------|----------------|
| HEIGHT | "E" | "F" | "G" | "V" |
| -05.0 | 5.10 [.201] | 5.335 [.2100] | 5.52 [.217] | 10.525 [.4144] |
| -07.0 | 7.00 [.276] | 7.250 [.2854] | 7.37 [.290] | 12.440 [.4898] |
| *-07.0-L | | | | |
| *-09.0 | 9.10 [.358] | 9.335 [.3675] | 9.52 [.375] | 14.525 [.5719] |
| **-.10.0 | 10.10 [.398] | 10.335 [.4069] | 10.52 [.414] | 15.525 [.6112] |
| (** = NOT TOOLED) (* = NOT RELEASED) | | | | |

* PROPRIETARY NOTE *

THIS DOCUMENT CONTAINS CONFIDENTIAL AND PROPRIETARY INFORMATION AND ALL DESIGN, MANUFACTURING, REPRODUCTION, USE, PATENT RIGHTS AND SALES RIGHTS ARE EXPRESSLY RESERVED BY SAMTEC, INC. THIS DOCUMENT SHALL NOT BE DISCLOSED, IN WHOLE OR PART, TO ANY UNAUTHORIZED PERSON OR ENTITY NOR REPRODUCED, TRANSFERRED OR INCORPORATED IN ANY OTHER PROJECT IN ANY MANNER WITHOUT THE EXPRESS WRITTEN CONSENT OF SAMTEC, INC.

DO NOT SCALE DRAWING

SHEET SCALE: 2:1

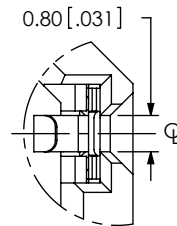
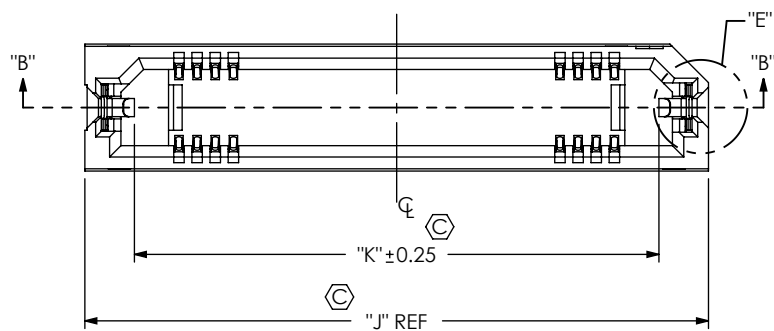
samtec

520 PARK EAST BLVD, NEW ALBANY, IN 47150
PHONE: 812-944-6733 FAX: 812-948-5047
e-Mail info@SAMTEC.com code 55322

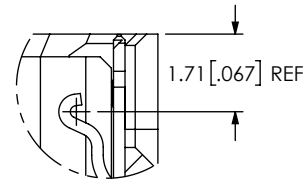
DESCRIPTION:
0.8MM EDGE RATE SOCKET ASSEMBLY

DWG. NO.
ERF8-XXX-XX.X-X-DV-XXXX-XX

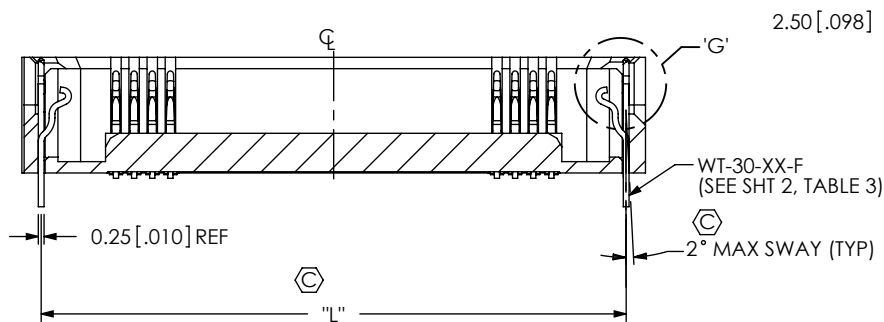
BY:KNOWLDEN 9/26/2005 SHEET 2 OF 7



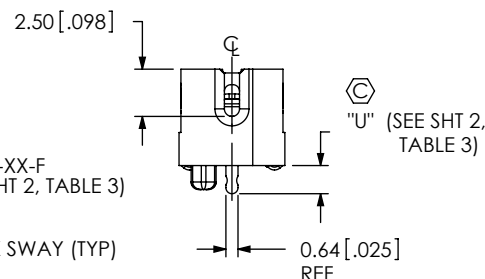
DETAIL "E"
SCALE 6 : 1



DETAIL "G"
SCALE 6 : 1



SECTION "B"-"B"
SCALE 3 : 1



RIGHT SIDE VIEW

| POSITION | "J" | "K" | "L" | "M" |
|----------|---------------|---------------|---------------|---------------|
| -005 | 11.50 [.453] | 7.13 [.281] | 9.80 [.386] | 2.75 [.108] |
| -010 | 15.50 [.610] | 11.13 [.438] | 13.79 [.543] | 4.75 [.187] |
| -011 | 16.30 [.642] | 11.93 [.470] | 14.61 [.575] | 5.15 [.203] |
| -013 | 17.90 [.705] | 13.53 [.533] | 16.20 [.638] | 5.95 [.234] |
| -020 | 23.50 [.925] | 19.13 [.753] | 21.79 [.858] | 8.75 [.344] |
| -023 | 25.90 [1.020] | 21.53 [.848] | 24.21 [.953] | 9.95 [.391] |
| -025 | 27.50 [1.083] | 23.13 [.911] | 25.81 [1.016] | 10.75 [.423] |
| -030 | 31.50 [1.240] | 27.13 [1.068] | 29.79 [1.173] | 12.75 [.502] |
| -035 | 35.50 [1.398] | 31.13 [1.226] | 33.78 [1.330] | 14.75 [.581] |
| -040 | 39.50 [1.555] | 35.13 [1.383] | 37.80 [1.488] | 16.75 [.659] |
| -049 | 46.70 [1.839] | 42.33 [1.667] | 45.00 [1.772] | 20.35 [.801] |
| -050 | 47.50 [1.870] | 43.13 [1.698] | 45.80 [1.803] | 20.75 [.817] |
| -060 | 55.50 [2.185] | 51.13 [2.013] | 53.80 [2.118] | 24.75 [.974] |
| -070 | 63.50 [2.500] | 59.13 [2.328] | 61.80 [2.433] | 28.75 [1.132] |
| -075 | 67.50 [2.657] | 63.13 [2.485] | 65.81 [2.591] | 30.75 [1.211] |

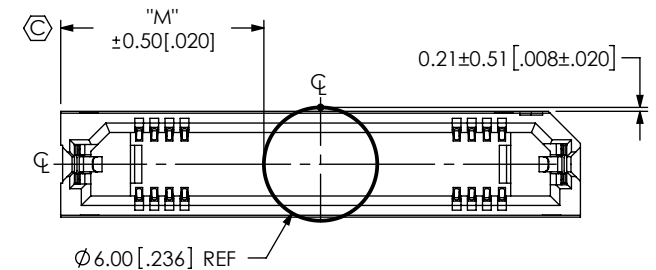


FIG 5
(ERF8-025-05.0-X-DV-L-K SHOWN)
(SAME AS FIG 1 & 2, EXCEPT AS SHOWN)
(AVAILABLE ON -05.0 & -07.0 LEAD STYLE ONLY)
(CENTER FEATURES REMOVED FOR CLARITY)

PROPRIETARY NOTE
THIS DOCUMENT CONTAINS CONFIDENTIAL AND PROPRIETARY INFORMATION AND ALL DESIGN, MANUFACTURING, REPRODUCTION, USE, PATENT RIGHTS AND SALES RIGHTS ARE EXPRESSLY RESERVED BY SAMTEC, INC. THIS DOCUMENT SHALL NOT BE DISCLOSED, IN WHOLE OR PART, TO ANY UNAUTHORIZED PERSON OR ENTITY NOR REPRODUCED, TRANSFERRED OR INCORPORATED IN ANY OTHER PROJECT IN ANY MANNER WITHOUT THE EXPRESS WRITTEN CONSENT OF SAMTEC, INC.

DO NOT SCALE DRAWING

SHEET SCALE: 2:1

samtec

520 PARK EAST BLVD, NEW ALBANY, IN 47150
PHONE: 812-944-6733 FAX: 812-948-5047
e-Mail info@SAMTEC.com code 55322

DESCRIPTION:
0.8MM EDGE RATE SOCKET ASSEMBLY

DWG. NO.
ERF8-XXX-XX.X-X-DV-XXXX-XX

BY: KNOWLDEN 9/26/2005 SHEET 3 OF 7

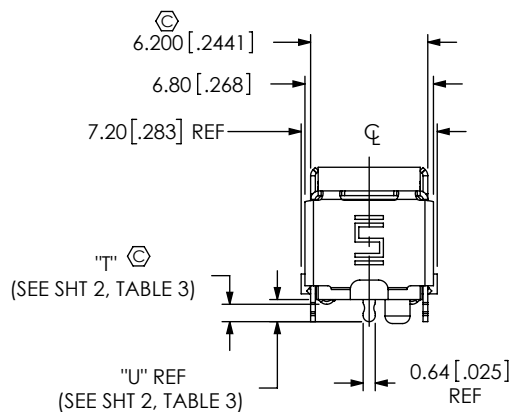
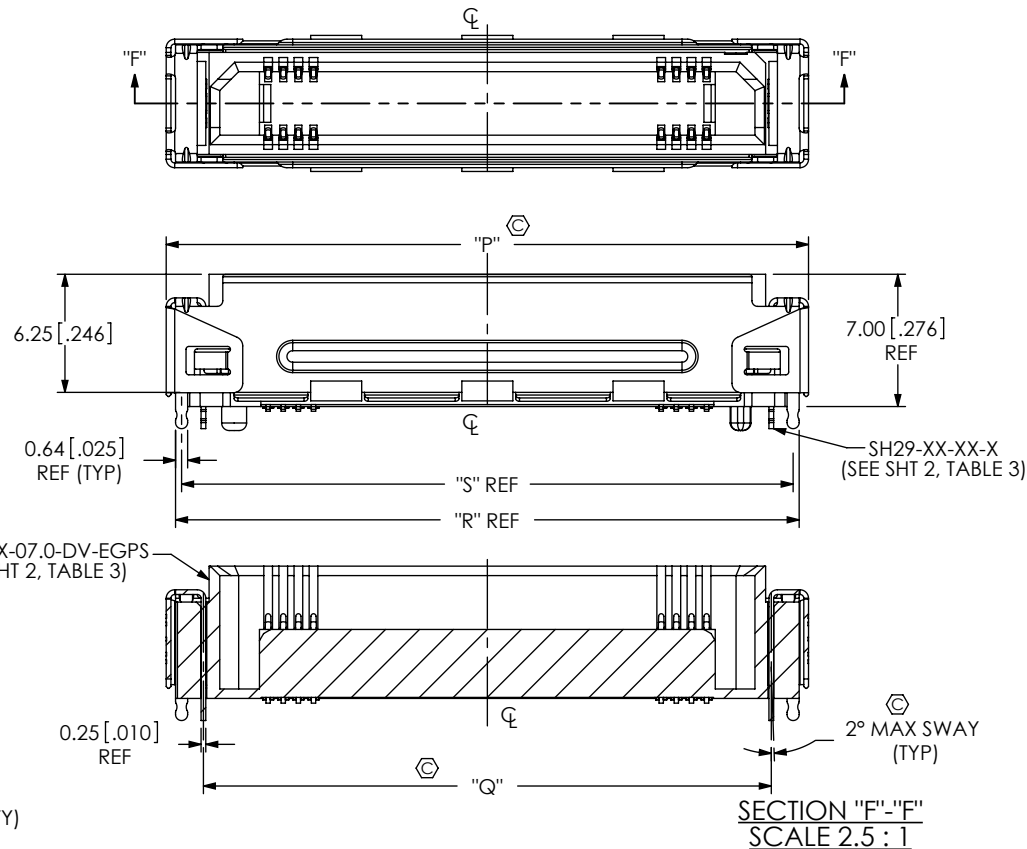
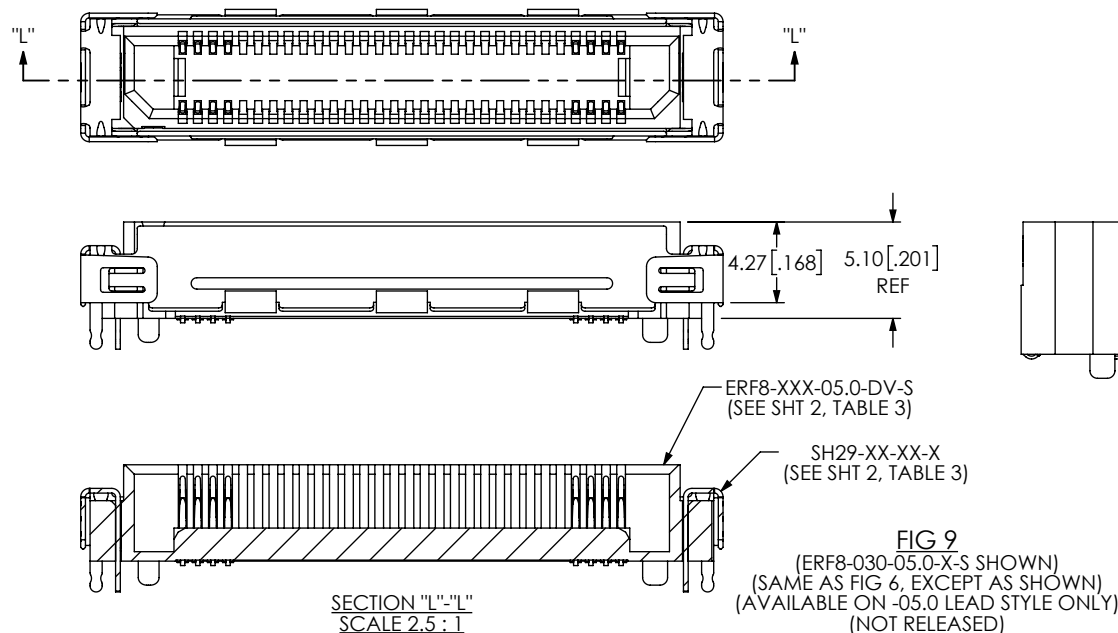


FIG 6
(ERF8-030-07.0-X-EGPS SHOWN)
(SAME AS FIG 3, EXCEPT AS SHOWN)
(AVAILABLE ON -07.0 LEAD STYLE ONLY)
(CENTER FEATURES REMOVED FOR CLARITY)



SECTION "F"-F"
SCALE 2.5 : 1



SECTION "L"-L"
SCALE 2.5 : 1

| TABLE 8 | | | | |
|-------------|-------------|---------------|---------------|---------------|
| No. OF POS. | "P" | "Q" | "R" | "S" |
| -10 | 18.0 [.71] | 14.00 [.551] | 17.00 [.669] | 16.36 [.644] |
| -20 | 26.0 [1.02] | 22.00 [.866] | 25.00 [.984] | 24.36 [.959] |
| -25 | 30.0 [1.18] | 26.00 [1.024] | 29.00 [1.142] | 28.36 [1.117] |
| -30 | 34.0 [1.34] | 30.00 [1.181] | 33.00 [1.299] | 32.36 [1.274] |

PROPRIETARY NOTE
THIS DOCUMENT CONTAINS CONFIDENTIAL AND PROPRIETARY INFORMATION AND ALL DESIGN, MANUFACTURING, REPRODUCTION, USE, PATENT RIGHTS AND SALES RIGHTS ARE EXPRESSLY RESERVED BY SAMTEC, INC. THIS DOCUMENT SHALL NOT BE DISCLOSED, IN WHOLE OR PART, TO ANY UNAUTHORIZED PERSON OR ENTITY NOR REPRODUCED, TRANSFERRED OR INCORPORATED IN ANY OTHER PROJECT IN ANY MANNER WITHOUT THE EXPRESS WRITTEN CONSENT OF SAMTEC, INC.

DO NOT SCALE DRAWING

SHEET SCALE: 3:1

samtec

520 PARK EAST BLVD, NEW ALBANY, IN 47150
PHONE: 812-944-6733 FAX: 812-948-5047
e-Mail: info@SAMTEC.com code 55322

DESCRIPTION:
0.8MM EDGE RATE SOCKET ASSEMBLY

DWG. NO.
ERF8-XXX-XX.X-X-DV-XXXX-XX

BY: KNOWLDEN 9/26/2005 SHEET 4 OF 7

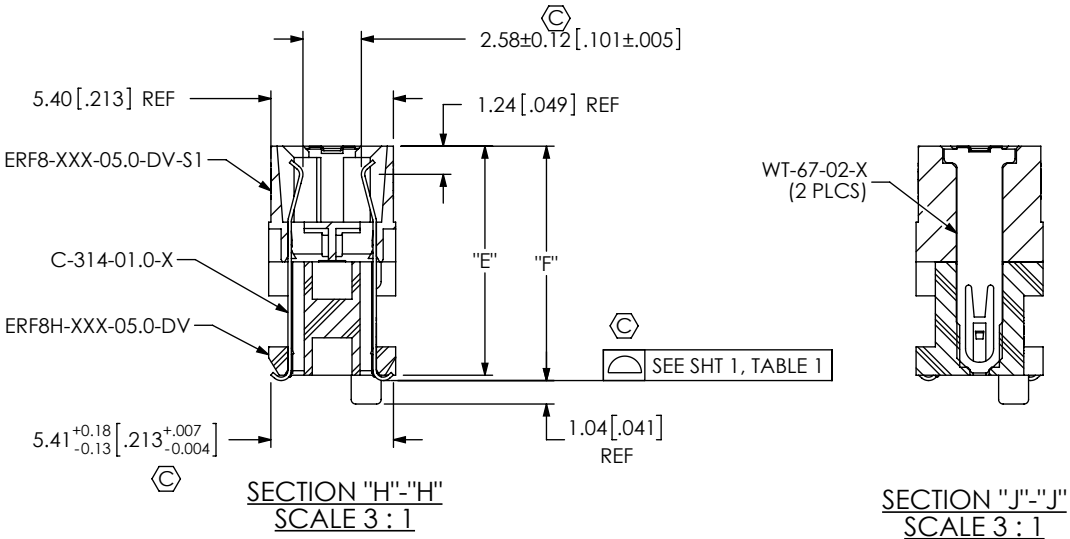
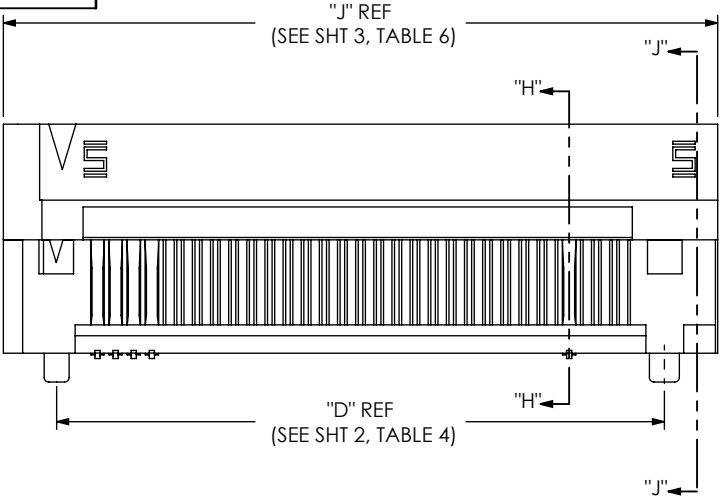


FIG 7
(ERF8-030-10.0-X-DV SHOWN)
(CENTER FEATURES REMOVED FOR CLARITY)
(NOT TOOLED)

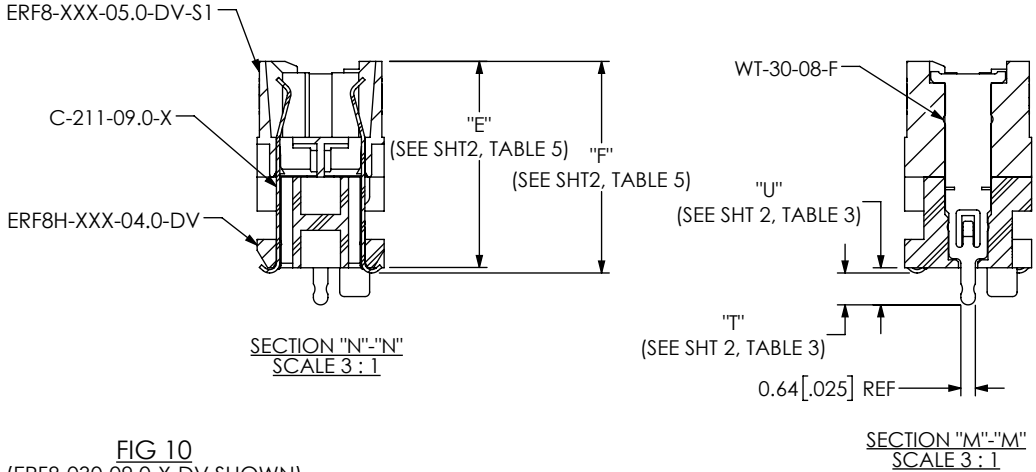
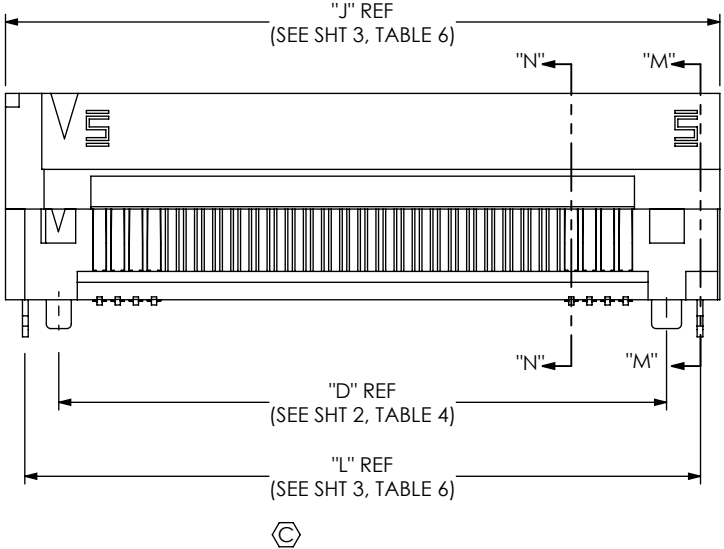
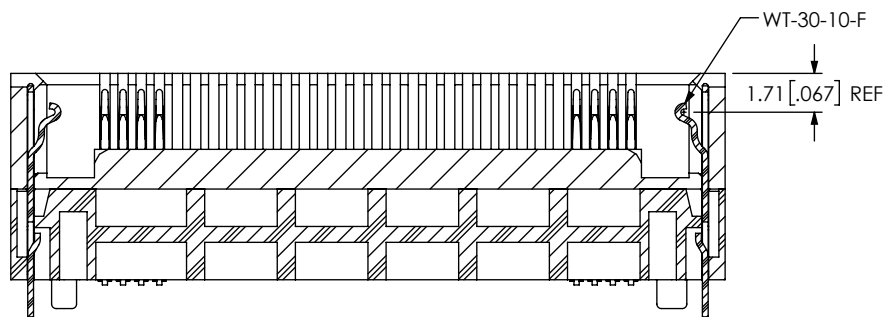
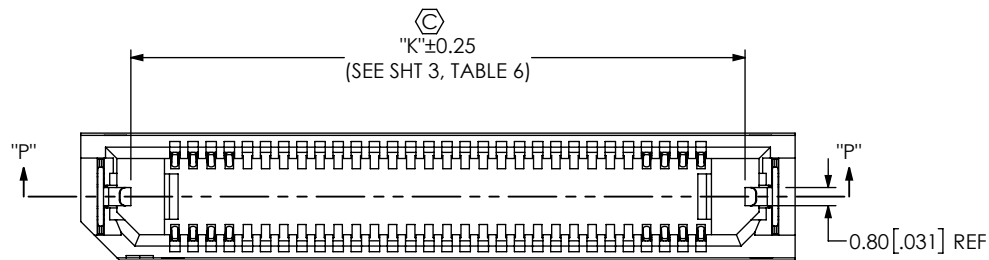


FIG 10
(ERF8-030-09.0-X-DV SHOWN)
(DIFFERENT AS SHOWN, OTHERWISE SAME AS FIG 7)
(NOT RELEASED)

| | | |
|---|--|--------------|
| <p>PROPRIETARY NOTE</p> <p>THIS DOCUMENT CONTAINS CONFIDENTIAL AND PROPRIETARY INFORMATION AND ALL DESIGN, MANUFACTURING, REPRODUCTION, USE, PATENT RIGHTS AND SALES RIGHTS ARE EXPRESSLY RESERVED BY SAMTEC, INC. THIS DOCUMENT SHALL NOT BE DISCLOSED, IN WHOLE OR PART, TO ANY UNAUTHORIZED PERSON OR ENTITY NOR REPRODUCED, TRANSFERRED OR INCORPORATED IN ANY OTHER PROJECT IN ANY MANNER WITHOUT THE EXPRESS WRITTEN CONSENT OF SAMTEC, INC.</p> <p>DO NOT SCALE DRAWING</p> <p>SHEET SCALE: 2:1</p> | | |
| | 520 PARK EAST BLVD, NEW ALBANY, IN 47150 | |
| | PHONE: 812-944-6733 FAX: 812-948-5047 | |
| | e-Mail info@SAMTEC.com code 55322 | |
| DESCRIPTION: 0.8MM EDGE RATE SOCKET ASSEMBLY | | |
| DWG. NO. ERF8-XXX-XX.X-X-DV-XXXX-XX | | |
| BY:KNOWLDEN 9/26/2005 | | SHEET 5 OF 7 |



SECTION "P"-"P"
SCALE 3 : 1

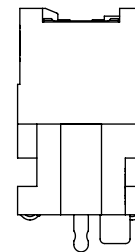


FIG 11
(ERF8-030-09.0-X-DV-L SHOWN)
(DIFFERENT AS SHOWN, OTHERWISE SAME AS FIG 10)
(NOT RELEASED)

* PROPRIETARY NOTE *

THIS DOCUMENT CONTAINS CONFIDENTIAL AND PROPRIETARY INFORMATION AND ALL DESIGN, MANUFACTURING, REPRODUCTION, USE, PATENT RIGHTS AND SALES RIGHTS ARE EXPRESSLY RESERVED BY SAMTEC, INC. THIS DOCUMENT SHALL NOT BE DISCLOSED, IN WHOLE OR PART, TO ANY UNAUTHORIZED PERSON OR ENTITY NOR REPRODUCED, TRANSFERRED OR INCORPORATED IN ANY OTHER PROJECT IN ANY MANNER WITHOUT THE EXPRESS WRITTEN CONSENT OF SAMTEC, INC.

samtec

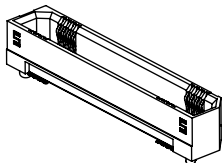
520 PARK EAST BLVD, NEW ALBANY, IN 47150
PHONE: 812-944-6733 FAX: 812-948-5047
e-Mail: info@SAMTEC.com code 55322

SHEET SCALE: 2:1

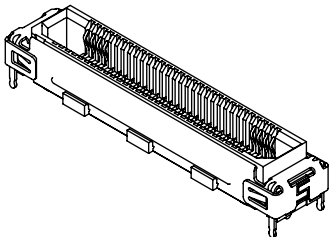
DESCRIPTION:
0.8MM EDGE RATE SOCKET ASSEMBLY

DWG. NO.
ERF8-XXX-XX.X-X-DV-XXXX-XX

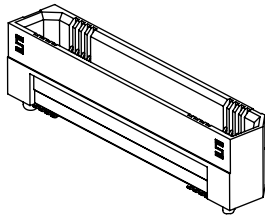
BY: KNOWLDEN 9/26/2005 SHEET 6 OF 7



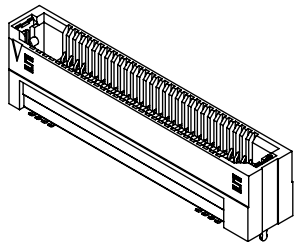
-05.0 SHOWN



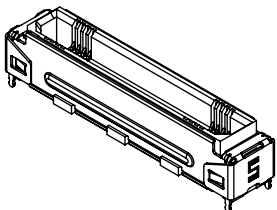
*-05.0 WITH -S SHOWN



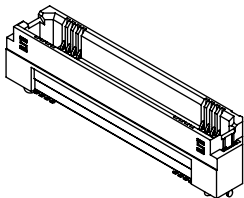
-07.0 SHOWN



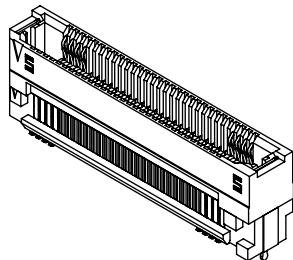
*-07.0 WITH -L SHOWN



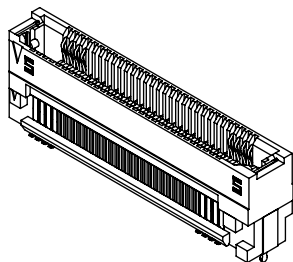
-07.0 WITH EGPS SHOWN



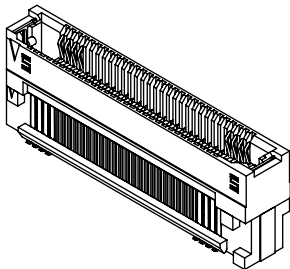
-07.0 WITH -EGP SHOWN



*-09.0 OPTION




*-09.0 WITH -L SHOWN



** -10.0 SHOWN

(*=NOT RELEASED)
(**=NOT TOOLED)

| | | | |
|---|--|---|--------------|
| <p>* <u>PROPRIETARY NOTE</u> *</p> <p>THIS DOCUMENT CONTAINS CONFIDENTIAL AND PROPRIETARY INFORMATION AND ALL DESIGN, MANUFACTURING, REPRODUCTION, USE, PATENT RIGHTS AND SALES RIGHTS ARE EXPRESSLY RESERVED BY SAMTEC, INC. THIS DOCUMENT SHALL NOT BE DISCLOSED, IN WHOLE OR PART, TO ANY UNAUTHORIZED PERSON OR ENTITY NOR REPRODUCED, TRANSFERRED OR INCORPORATED IN ANY OTHER PROJECT IN ANY MANNER WITHOUT THE EXPRESS WRITTEN CONSENT OF SAMTEC, INC.</p> <p>DO NOT SCALE DRAWING</p> <p>SHEET SCALE: 2:1</p> | |  <p>520 PARK EAST BLVD, NEW ALBANY, IN 47150 PHONE: 812-944-6733 FAX: 812-948-5047 e-Mail info@SAMTEC.com code 55322</p> | |
| | | DESCRIPTION: 0.8MM EDGE RATE SOCKET ASSEMBLY | |
| | | DWG. NO. ERF8-XXX-XX.X-X-DV-XXXX-XX | |
| BY: KNOWLDEN | | 9/26/2005 | SHEET 7 OF 7 |