



(2.00 mm) .0787"

S2SD, S2SDT SERIES

TIGER EYE™ CABLE ASSEMBLY

SPECIFICATIONS

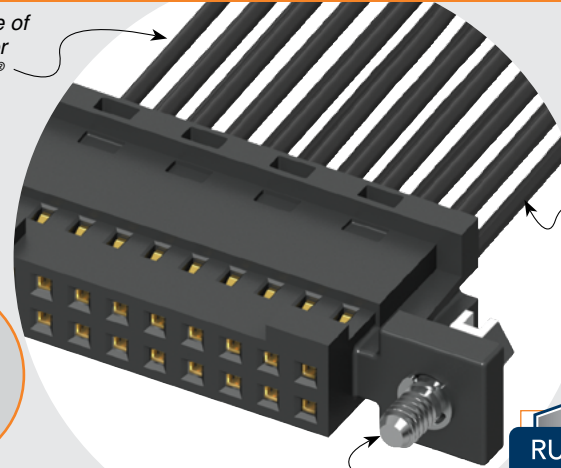
For complete specifications see www.samtec.com?S2SD or www.samtec.com?S2SDT

- Insulator Material:**
Black LCP
- Contact Material:**
BeCu
- Plating:**
Au over 50 μ" (1.27 μm) Ni
- Wire:**
24, 26, 28 or 30 AWG
- Operating Temp Range:**
-10 °C to +105 °C (PVC)
-40 °C to +125 °C (*Teflon®)
- Current Rating (S2SD-24/T2M):**
3.8 A per pin
(1 pin powered per row)
- Voltage Rating:**
250 VAC
- RoHS Compliant:**
Yes

*DuPont™ Teflon® is a registered trademark of the E.I. du Pont de Nemours and Company or its affiliates.

Mates with:
T2M

Choice of PVC or Teflon® cable



24, 26, 28 or 30 Wire gauge

RUGGEDIZED BY SAMTEC

- Tiger Eye™ contacts
- Retention latches

ALSO AVAILABLE (MOQ Required)

- Other sizes
- Contact Samtec.

APPLICATION

| -24C CABLE COLOR CODING | |
|-------------------------|--------|
| PIN | COLOR |
| 1 | BROWN |
| 2 | RED |
| 3 | ORANGE |
| 4 | YELLOW |
| 5 | GREEN |
| 6 | VIOLET |
| 7 | GRAY |
| 8 | WHITE |
| 9 | BLACK |
| 10 | BLUE |
| ETC | REPEAT |

Notes:
For wiring option information refer to drawing on web.

Teflon® cable is intended for crimp only. Contact Samtec for solderable cable applications.

Some lengths, styles and options are non-standard, non-returnable.

| TYPE | PINS PER ROW | WIRE GAUGE | PLATING OPTION | ASSEMBLED LENGTH | END OPTION | END 2 OPTION |
|---------------------------------------|---|--|---|---|--|---|
| S2SD = Double Row PVC Cable | -05, -07, -10, -15, -20, -25, -30 (Standard sizes) | -24 -24C = Color Coded Cable (S2SD only) | -L = 10 μ" (0.25 μm) Gold on contact | - "XX.XX" = Wire Length in Inches (69.85 mm) 02.75" min. | -S = Single End -D = Double End | (Only available with -D, -DR & -DS) -NUS = Notch up, straight (Pin 1 to Pin N-1) -NDS = Notch down, straight (Pin 1 to Pin 2) -NUX = Notch up, crossed (Pin 1 to Pin N) -NDX = Notch down, crossed (Pin 1 to Pin 1) |

Specify "S" for single ended and "D" for double ended.

- (XR) = Retention Latch (-SR mates with T2M-WT)

- (XS) = Screw Down (10 positions minimum) (mates with T2M-DS)