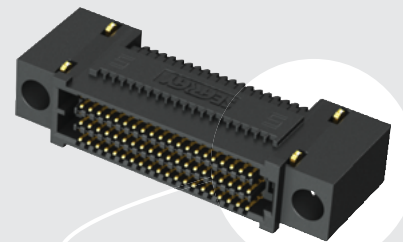


SEAF-20-01-L-04-2-RA-GP-TR



SEAF-20-01-L-06-2-RA-GP-TR

SEAF-RA SERIES

(1,27 mm) .050"

HI-DENSITY RIGHT ANGLE OPEN PIN FIELD

SPECIFICATIONS

For complete specifications and recommended PCB layouts see www.samtec.com?SEAF-RA

- Insulator Material:** Black LCP
- Contact Material:** Copper Alloy
- Current Rating:** 2.1 A per pin (4 adjacent pins powered)
- Operating Temp Range:** -55°C to +125°C
- Plating:** Au or Sn over 50 μm (1,27 μm) Ni
- Contact Resistance:** 17.1 mΩ max
- Working Voltage:** 280 VAC
- Mated Cycles:** 100
- RoHS Compliant:** Yes
- Lead-Free Solderable:** Yes

RECOGNITIONS

For complete scope of recognitions see www.samtec.com/quality



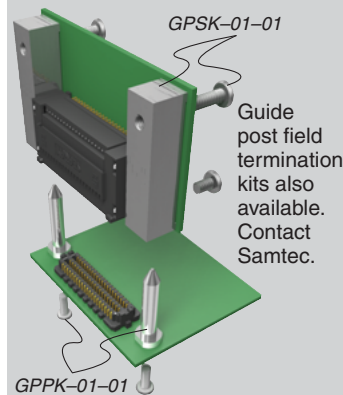
FILE NO. E111594

ALSO AVAILABLE (MOQ Required)

- Other platings
- Contact Samtec.

Mates with:
SEAM, SEAMP, SEAC

OTHER SOLUTIONS



Up to 500 pins



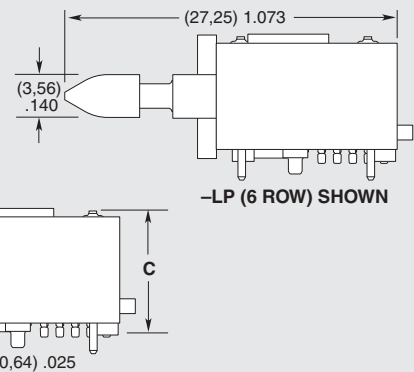
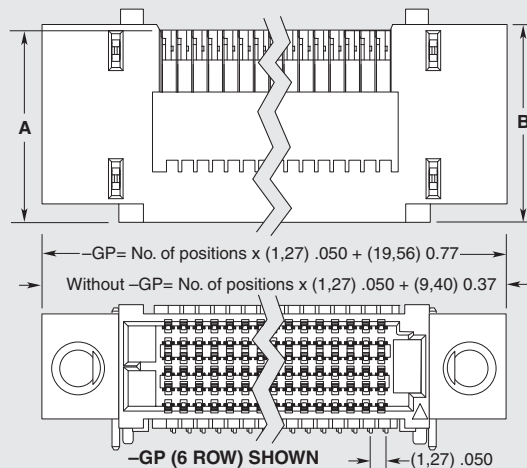
SEAF	NO. PINS PER ROW	01	PLATING OPTION	NO. OF ROWS	SOLDER TYPE	RA	OPTION	TR
	-20, -30, -40, -50		-L = 10 μm (0,25 μm) Gold on contact area, Matte Tin on solder tail -S = 30 μm (0,76 μm) Gold on contact area, Matte Tin on solder tail	-04 = Four Rows -06 = Six Rows -08* = Eight Rows -10* = Ten Rows	-1 = Tin/Lead Alloy Solder Charge -2 = Lead-Free Solder Charge		-GP = Guide Post Hole -LP = Latch Post (06 row 30 positions only) (Mates to SEAC Series) -K = Polyimide film Pick & Place Pad	-TR = Tape & Reel

* Note: Fixturing required to process eight and ten row options, see www.samtec.com/searayfixture

NO. OF ROWS	A	B	C
-04	(13,26) .522	(13,77) .542	(7,91) .311
-06	(15,80) .622	(16,31) .642	(10,45) .411
-08	(18,34) .722	(18,85) .742	(12,99) .511
-10	(20,88) .822	(21,39) .842	(15,53) .611

TEST DATA*	SEAF-RA/SEAM-02	SEAF-RA/SEAM-RA
Single-Ended	25 Gbps	24 Gbps
Differential Pair	26 Gbps	22 Gbps

* @ 3dB insertion loss. Test board losses deembedded from performance data.
Complete test data available at www.samtec.com?SEAF-RA or contact sig@samtec.com



Note: Some sizes, styles and options are non-standard, non-returnable.